

SGX NIFTY : 7849 (25 Pt Up)

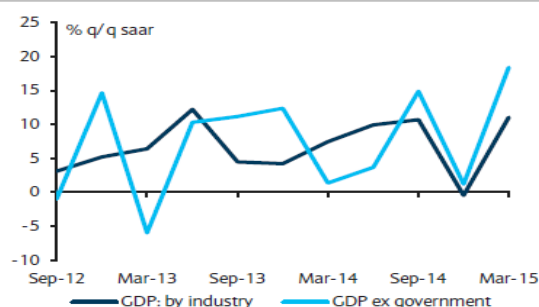
Quote of the Day

"The primary test of managerial economic performance is the achievement of a high earnings rate on equity capital employed (without undue leverage, accounting gimmickry, etc.) and not the achievement of consistent gains in earnings per share."

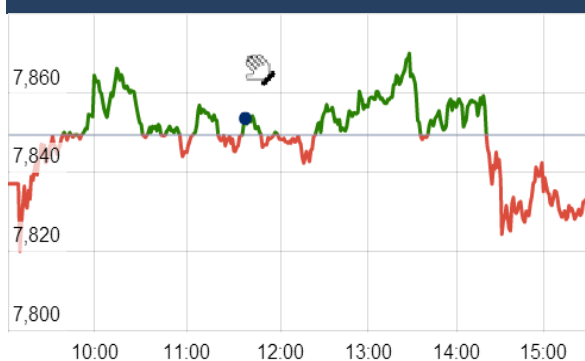
Warren Buffett

Chart of the Day

GDP Trend



Index Action Nifty (24th Nov 15)



Index

Contents	Page	Coverage
News	2	Update
Economic Calendar	3	Update

Market

Name	Value	Change
Sensex	25,775.74	(43.60)
Nifty	7831.60	(17.65)
DOW	17,813.53	1.34
NASDAQ	5,116.24	13.66
CAC	4,892.99	72.21
DAX	11,169.54	235.55
FTSE	6,337.64	60.41
NIKKEI	19,959.26	111.68
HANG SENG	22,730.59	232.59
EW ALL SHARE	13676.29	(20.00)

Instituional Turnover

FII

Investor	Buy(Cr.)	Sale(Cr.)	Net(Cr.)
24-Nov-15	3252.52	3792.64	(540.12)
Nov,15	13877.17	15558.39	(1681.22)
2015	988252.93	994153.37	23177.15

DII

Investor	Buy(Cr.)	Sale(Cr.)	Net(Cr.)
24-Nov-15	1866.12	1333.99	532.13
Nov,15	5999.38	4942.44	(446.80)
2015	399587.89	349062.80	25255.74

Commodity Price

Commodity/Currencies	Value	
GOLD	25238.00	↓
SILVER	33839.00	↓
CRUDEOIL	43.18	↓
COPPER	300.10	↓
NATURALGAS	154.80	↑
DOLLAR/RS.	66.32	↑
EURO/RS.	70.49	↓
POUND/RS.	100.34	↓

Market Snapshot

Top Price Performers

Top Performers 1D	% Change	Top Performers 1W	% Change	Top Performers 1M	% Change
BIRLACOT	20.00	SURYACHAKRA	50.73	MUDRA	80.59
GAMMONIND	19.98	JCTEL	50.00	MANUGRAPH	73.94
DOLPHINOFF	19.94	COMMEXTECH	45.22	SHIVTEX	70.20
GLOBUSSPR	19.94	MODILUFT	43.85	ALLSEC	65.97
ESL	19.93	EON	43.82	MOREPENLAB	62.97

Worst Performers 1D	% Change	Worst Performers 1W	% Change	Worst Performers 1M	% Change
RESTILE	(9.94)	JSL	(24.31)	SARLAPOLY	(89.48)
ABGSHIP	(7.61)	PLETHICO	(22.14)	HELIOSMATH	(50.96)
KINETICENG	(6.51)	KGNIND	(20.92)	SHILPAMED	(48.51)
JAIBALAJI	(6.30)	CMAHENDRA	(20.13)	PLETHICO	(46.56)
SELMCL	(5.90)	CMAHENDRA	(20.13)	EROSMEDIA	(46.19)

Top News

- **Dr. Reddy's Laboratories (DRL)**, a warning letter has been uploaded on the US Food and Drug Administration website with regards to DRL's plants it had inspected recently. The administrator has identified significant deviations from current good manufacturing practices (CGMP) at three of DRL's plants. The three plants that were inspected earlier by US FDA were Unit VI of Srikakulam Plant, Unit V at Telangana's Miryalaguda Taluk Plant and Unit VII at the Duvvada Plant in Visakhapatnam.

• HDFC Bank

- Banks will bring down interest rates one way or another
- Interest rate cycle is trending downward with inflation under control
- RBI, government must be given credit for bringing inflation under control
- A lot has been done on the reform front already
- Not likely that inflation will perk up in a hurry
- Global uncertainty still persists

• Automatic FDI in defence will be subject to conditions: Government sources

Government had allowed 49 percent FDI in defence through automatic route

- In certain cases, Foreign Investment Promotion Board (FIPB) nod will be needed for 49 percent defence FDI
- FIPB nod needed for fresh defence foreign direct investment (FDI) in companies with existing industrial licence
- Auto nod for 49 percent defence FDI only if cleared by industrial licence panel
- Any defence FDI proposal having security clearance issues to need FIPB

- **DLF 's promoters** have bought 23 lakh shares of the company through open market transactions for nearly Rs 25 crore, raising their stakes to 74.99 percent. The 23 lakh shares were purchased between November 23-24 from open market. Post this transactions, the stake of promoters, KP Singh and family, has increased to 74.99 percent from 74.86 percent it held earlier in the firm.

- **National Aluminium Company (Nalco)** has received USD 8.05 million towards an out of court settlement from an US Firm in connection with a case pending in the US Court.

- **Maruti Suzuki India** said it will offer dual airbags and anti-lock braking system (ABS) as an option in all variants of Swift and Dzire, including the base variant. The company has launched Swift hatchback with optional package priced between Rs 4.9 lakh and Rs 6.43 lakh while Dzire with added safety features would be retailed between Rs 5.4 lakh and Rs 7.06 lakh

- **U.S. Crude Oil Inventories** rose to a seasonally adjusted annual rate of 0.961M, from 0.252M in the preceding month. Analysts had expected U.S. Crude Oil Inventories to rise 1.200M last month.

- **U.S. Gasoline Inventories** rose to a seasonally adjusted annual rate of 2.478M, from 1.009M in the preceding quarter. Analysts had expected U.S. Gasoline Inventories to rise 0.938M in the last quarter.

- **U.S. Commerce Department said that total durable goods orders**, which include transportation items, jumped by a seasonally adjusted 3.0% last month, easily surpassing forecasts for 1.5%. Orders for durable goods in September were revised to a drop of 0.8% from a previously reported decline of 1.2%.

- **U.S. Personal Income** rose to a seasonally adjusted 0.4%, from 0.2% in the preceding month whose figure was revised up from 0.1%. Analysts had expected U.S. Personal Income to rise 0.4% last month.

- **Malaysian Unemployment Rate** remained unchanged at a seasonally adjusted 3.2%, from 3.2% in the preceding month. Analysts had expected Malaysian Unemployment Rate to remain unchanged at 3.2% last month.

Economic Calendar

Country	Monday 20th Nov 15	Tuesday 21th Nov 15	Wednesday 22th Nov 15	Thursday 23th Nov 15	Friday 24th Nov 15
US	Fed Announcement ,Existing Home Sales .	CB Consumer Confidence ,Richmond Manufacturing Index .	Core Durable Goods Orders m/m , Unemployment Claims ,Core PCE Price Index m/m , Durable Goods Orders m/m .		
UK/EURO ZONE	French Flash Manufacturing PMI ,French Flash Services PMI , German Flash Manufacturing PMI , German Flash Services PMI ,	German Ifo Business Climate , Belgian NBB Business Climate , German Final GDP q/q .	Italian Retail Sales m/m ,German 10-y Bond Auction ,	M3 Money Supply y/y , Private Loans y/y .	Spanish Flash CPI y/y , Second Estimate GDP q/q , Prelim Business Investment q/q .
INDIA					

Narnolia Securities Ltd.

Narnolia Research Lab
Stellar IT Park | 5th Floor | Office Space No. 6 | Tower-IInd Plot No. C-25 | Sector-62 |
Noida | Ph : 0120-4215110

Central Strategy Desk - Kolkata
124 | 1st Floor | 7/1 Lords Sinha Road | Kolkata - 71
Ph : 033-22821500 | M : 93347 14418, 98302 69810