

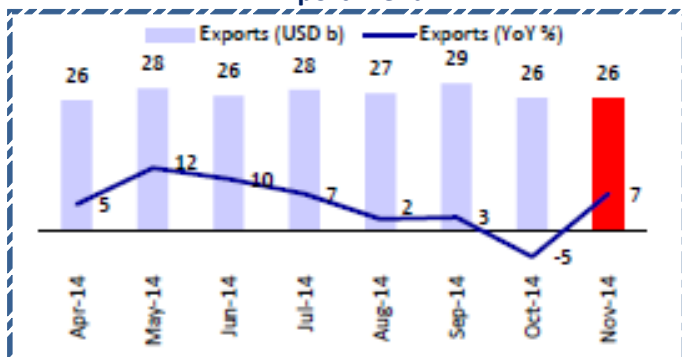
**Quote of the Day**

"We've long felt that the only value of stock forecasters is to make fortune tellers look good. Even now, Charlie (Munger) and I continue to believe that short-term market forecasts are poison and should be kept locked up in a safe place, away from children and also from grown-ups who behave in the market like children."

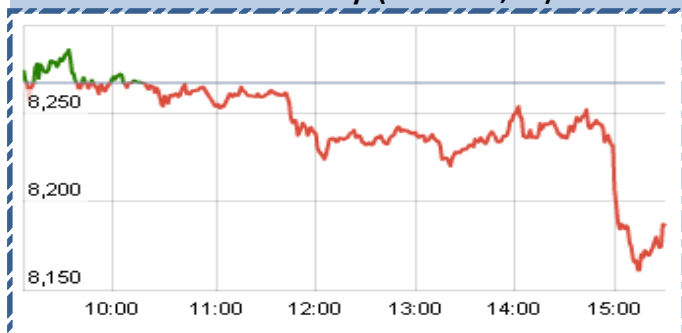
**SGX NIFTY : 8300**  
**( 10.50 pts Up)**

**Chart of the Day**

**Export Trend**



**Index Action-Nifty ( 24th Dec, 14)**



**Index**

Contents	Page	Coverage
News	3	UPDATE
Economic calendar	4	UPDATE

MARKET		
Name	Value	Change
Sensex	27,209	(297.85)
Nifty	8,174.10	(92.90)
DOW		Closed
NASDAQ		Closed
CAC		Closed
DAX		Closed
FTSE	6609.93	11.75
NIKKEI	17779.18	(29.57)
HANG SENG	23349.34	15.65
EW ALL SHARE	13730.22	(86.16)

**INSTITUTIONAL TURNOVER**

FII			
Investor	Buy(Cr.)	Sale(Cr.)	Net(Cr.)
24th Dec	5112.98	7,921.25	(2808.27)
Dec,14	50624.85	48,382.49	2242.36
2014	949865.82	8,76,782.00	73083.82
DII			
Investor	Buy(Cr.)	Sale(Cr.)	Net(Cr.)
24th Dec	2910.17	2,401.08	509.09
Dec,14	20978.91	20,559.48	419.43
2014	342400.89	3,76,382.83	(33981.94)

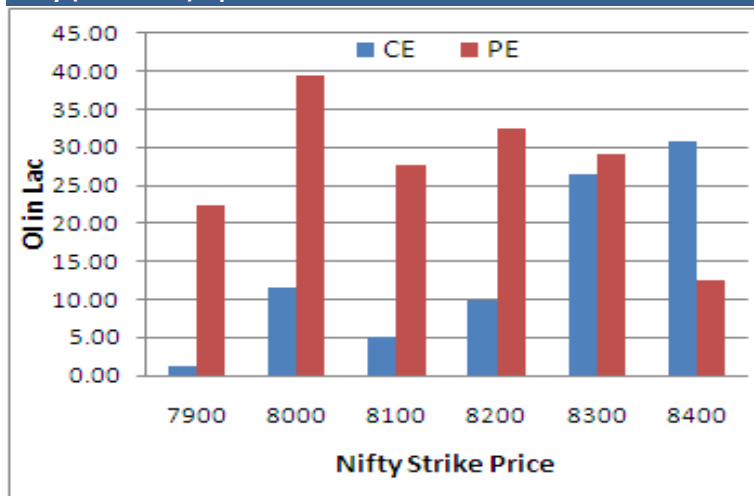
**COMMODITY PRICE**

COMMODITY/CURRENCIES	Value	
GOLD	26584.00	↓
SILVER	36445.00	↑
CRUDEOIL	70.79	↓
COPPER	404.20	↓
NATURALGAS	196.40	↓
DOLLAR/RS.	63.52	↑
EURO/RS.	77.60	↓
POUND/RS.	98.82	↑

**Narnolia Securities Ltd.**

NIFTY SNAPSHOT	
Nifty Spot	8174.10(-92.90)
Nifty Dec 2014 Future	8173
Nifty Jan 2014 Future	8275
Nifty Dec 2014 Open Interest	10949100
Nifty Jan 2014 Open Interest	20862425
7 DMA of Spot Nifty	8178
21 DMA of Spot Nifty	8352
50 DMA of Spot Nifty	8258
VOLATILITY INDEX (VIX)	15.07(-0.23)
PUT CALL RATIO	0.89

**Nifty (Jan Series) Option OI Distribution:**



**Activity of Nifty (Jan Series) Strike**

Strike	CALL		PUT	
	OI	% Chng	OI	% Chng
7900	112500	45.29	2232150	35.14
8000	1155200	50.98	3934575	28.59
8100	494250	3.75	2771200	12.70
8200	997475	15.80	3255275	14.03
8300	2655075	38.19	2906825	18.55
8400	3089075	55.95	1239675	13.05



**FII Activity (Fig in Cr)**

Segment	Buy	Sell	Net
INDEX FUTURE	3,462	4,766	(1,303)
INDEX OPTION	22,868	21,831	1,036
STOCK FUTURE	13,967	15,614	(1,646)
STOCK OPTION	438	383	55
<b>TOTAL</b>	<b>40,735</b>	<b>42,594</b>	<b>(1,858)</b>

**Fresh Long Seen In (Rising OI -Rising Price)**

Scrip	OI	OI ch%	CMP	Ch%
PTC	158,92,000	31.8	91.6	0.1
JINDALSTEL	266,77,000	21.2	145.9	0.1
ORIENTBANK	46,74,000	18.6	329.9	4.8
IGL	7,11,000	18.2	460.8	1.5
IFCI	634,16,000	12.7	35.9	1.4

**Fresh Shorts Seen In: (Rising OI -Falling Price)**

Scrip	OI	OI ch%	CMP	Ch%
VOLTAS	82,72,000	20.6	235.4	-1.8
BIOCON	73,58,500	16.0	413.2	-2.6
SAIL	489,28,000	15.8	81.9	-0.3
DRREDDY	15,52,875	14.6	3139.2	-2.1
POWERGRID	341,52,000	12.8	136.2	-2.3

**PCR (OI)**

STOCK	T1	T2
BAJAJ-AUTO	0.59	0.33
JUBLFOOD	0.34	0.28
LUPIN	0.56	0.46
HEROMOTOCO	0.58	0.49
JSWENERGY	0.36	0.31

**PCR (OI)**

STOCK	T1	T2
IBREALEST	0.23	0.35
HCLTECH	0.45	0.60
TATAMTRDVR	0.68	0.81
YESBANK	0.75	0.87
TECHM	0.41	0.47

## Markets Snapshot

### Top Price Performers

Top Performers 1D	% Change	Top Performers 1W	% Change	Top Performers 1M	% Change
DECNGOLD	19.36	ABGHEAVY	57.79	HINDDORROL	82.90
CRANESSOFT	17.66	GUJRATGAS	40.34	AFTEK	63.02
OPTOCIRCUI	15.40	MAXWELL	39.02	MIC	62.69
RESTILE	14.75	BFUTILITIE	36.38	ABGHEAVY	61.16
BPL	13.40	NUTEK	36.36	CENTRUM	60.64

### Worst Price Performers

Worst Performers 1D	% Change	Worst Performers 1W	% Change	Worst Performers 1M	% Change
INFODRIVE	(89.57)	INFODRIVE	(88.03)	INFODRIVE	(83.69)
INDINFO	(17.39)	KSERASERA	(33.96)	KSERASERA	(59.31)
KANANIIND	(12.26)	INDINFO	(24.50)	MANAKSIA	(57.12)
GNRL	(10.56)	PRITHVI	(24.00)	PRITI	(53.97)
PRITI	(9.78)	RASOYPR	(21.61)	WINSOMEDJ	(47.76)

### Top News :

- **Health Canada** said that the importers have decided to stop the importation and distribution of products manufactured by Dr Reddy's Labs and IPCA Labs at Srikakulam and Pithampur facilities respectively. Canadian importers have agreed to quarantine health products from the two India-based sites at Health Canada's request.
- **Reliance Industries** will relinquish its Krishna Godavari basin gas discovery block, KG-D3, mainly because of operational restrictions placed by the Defence Ministry. RIL, which had made four consecutive gas discoveries with close to 500 billion cubic feet of in-place reserves in block, proposed immediate relinquishment, its minority partner Hardy Oil and Gas plc of UK said .
- **3i Infotech** has sold its Western European subsidiary to Italy-based Objectway Financial Software for an undisclosed amount. This sale is in line with the group's strategy to sell its non-core assets/investments and use the additional cash generated from such sale to deleverage its balance sheet and for business purpose .
- **Coal India, GAIL** are signed agreement to invest Rs 9000 cr in Talcher plant . Coal india , Gail , RCF , FCIL will set up the integrate coal gasification cum fertiliser and ammonium nitrate complex at Talcher in Odisha by 2019
- **Edelweiss Asset Reconstruction** Company is looking to raise up to USD 100 million (Rs 634 crore) for Bharati Shipyard from foreign investors by April in an effort to infuse liquidity into the cash-strapped shipbuilder
- **DBCORP Management:** India is now a big market for Russian newsprint companies, following the restrictions in Europe. Newsprint prices have declined by USD 40/tonne and are now quoting at USD 540-560/tonne.
- **Panacea Biotec Ltd** has entered into collaboration with a leading International Pharmaceutical Company for the development and supply of an immunosuppressant generic product in USA.
- **Government** approved promulgation of an Ordinance to hike Foreign Direct Investment (FDI) cap in the insurance sector to 49 percent from 26 percent .
- **The government** approved 100 percent foreign direct investment (FDI) in medical devices via the automatic route.
- **U.S. home mortgages** rose last week as activity picked up and rates fell. Fixed 30-year mortgage rates averaged 4.02 percent in the week, down 4 basis points from 4.06 percent the week before. The 4.02-percent rate is the lowest since May 2013, MBA said.
- **Dutch GDP** fell to 1.0%, from 1.1% in the preceding month. Analysts had expected Dutch GDP to remain unchanged at 1.1% last month.
- **Trade and Industry** said that industrial production fell to a seasonally adjusted -0.6%, from 0.4% in the preceding month. Analysts had expected industrial production to rise 1.0% last month.
- **Japanese Household Spending** rose to a seasonally adjusted -2.5%, from -4.0% in the preceding month. Analysts had expected Japanese Household Spending to rise to -3.8% last month.

## Economic Calendar

	Monday 22-Dec-14	Tuesday 23-Dec-14	Wednesday 24-Dec-14	Thursday 25-Dec-14	Friday 26-Dec-14
US	Existing Home Sales .	Core Durable Goods Orders m/m , Final GDP q/q , Core PCE Price Index m/m , Durable Goods Orders m/m , Personal Spending m/m , Final GDP Price Index q/q , Personal Income m/m , Flash Manufacturing PMI , New Home Sales .	Unemployment Claims , Crude Oil Inventories , Natural Gas Storage .	Holiday	Revised UoM Consumer Sentiment
UK/EURO ZONE	German Unemployment Change , GfK Consumer Confidence .	BBA Mortgage Approvals , Current Account , German Retail Sales m/m , Final GDP q/q ,		Holiday	
INDIA					



## Narnolia Securities Ltd

124, 1st floor 7/ 1, Lords Sinha Road Kolkata 700071, Ph 033-22821251 Toll Free no : 1-800-345-4000

email: [research@narnolia.com](mailto:research@narnolia.com),

website : [www.narnolia.com](http://www.narnolia.com)

**Risk Disclosure & Disclaimer:** This report/message is for the personal information of the authorized recipient and does not construe to be any investment, legal or taxation advice to you. Narnolia Securities Ltd. (Hereinafter referred as NSL) is not soliciting any action based upon it. This report/message is not for public distribution and has been furnished to you solely for your information and should not be reproduced or redistributed to any other person in any form. The report/message is based upon publicly available information, findings of our research wing "East wind" & information that we consider reliable, but we do not represent that it is accurate or complete and we do not provide any express or implied warranty of any kind, and also these are subject to change without notice. The recipients of this report should rely on their own investigations, should use their own judgment for taking any investment decisions keeping in mind that past performance is not necessarily a guide to future performance & that the the value of any investment or income are subject to market and other risks. Further it will be safe to assume that NSL and /or its Group or associate Companies, their Directors, affiliates and/or employees may have interests/ positions, financial or otherwise, individually or otherwise in the recommended/mentioned securities/mutual funds/ model funds and other investment products which may be added or disposed including & other mentioned in this report/message.