

Quote of the Day

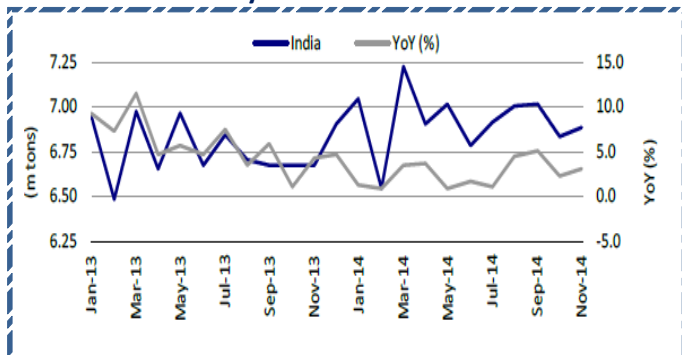
" Once we realize that imperfect understanding is the human condition there is no shame in being wrong, only in failing to correct our mistakes."

George Soros

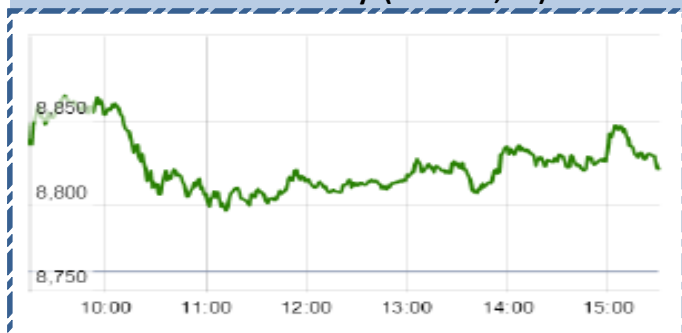
SGX NIFTY : 8855
(39 pts Up)

Chart of the Day

Indian Monthly Crude Steel Production Trend



Index Action-Nifty (23th Jan, 15)



Index

Contents	Page	Coverage
News	3	UPDATE
Result Calendar Q3FY15	4 to 12	UPDATE
Result Q3FY15	13 to 14	UPDATE
Economic Calendar	15	UPDATE

MARKET

Name	Value	Change
Sensex	29278.84	272.28
Nifty	8835.6	74.20
DOW	17678.7	6.10
NASDAQ	4771.76	13.88
CAC	4675.78	34.44
DAX	10798.33	148.75
FTSE	6852.4	19.51
NIKKIE	17697.32	228.80
HANG SENG	24807.27	(102.69)
EW ALL SHARE	14580.25	39.53

INSTITUTIONAL TURNOVER

FII			
Investor	Buy(Cr.)	Sale(Cr.)	Net(Cr.)
23th Jan	7171.82	5,151.84	2019.98
Jan,15	75199.50	68,222.15	6977.35
2015	75199.50	68,222.15	6977.35
DII			
Investor	Buy(Cr.)	Sale(Cr.)	Net(Cr.)
23th Jan	1320.15	2,620.11	(1299.96)
Jan,15	28023.28	32,111.32	(4088.04)
2015	28023.28	32,111.32	(4088.04)

COMMODITY PRICE

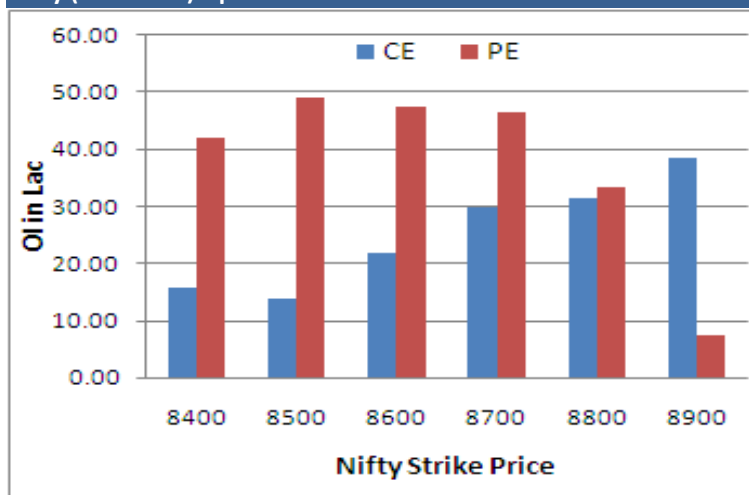
COMMODITY/CURRENCIES	Value	
GOLD	27864.00	↓
SILVER	39965.00	↓
CRUDEOIL	45.20	↓
COPPER	341.35	↓
NATURALGAS	182.50	↑
DOLLAR/RS.	61.42	↓
EURO/RS.	69.17	↑
POUND/RS.	92.80	↑

Narnolia Securities Ltd.

NIFTY SNAPSHOT

Nifty Spot	8835.60(+74.20)
Nifty Jan 2014 Future	8834
Nifty Feb 2014 Future	8890
Nifty Jan 2014 Open Interest	22753350
Nifty Feb 2014 Open Interest	3264600
7 DMA of Spot Nifty	8654
21 DMA of Spot Nifty	8393
50 DMA of Spot Nifty	8383
VOLATILITY INDEX (VIX)	18.56(-0.68)
PUT CALL RATIO	1.34

Nifty (Jan Series) Option OI Distribution:



Activity of Nifty (Jan Series) Strike

Strike	CALL		PUT	
	OI	% Chng	OI	% Chng
8400	1572750	-12.91	4198300	-3.24
8500	1389850	-37.87	4909000	-4.95
8600	2190300	-32.72	4754475	-10.50
8700	2970350	-7.74	4652275	3.04
8800	3129600	-16.41	3342500	59.76
8900	3862825	9.97	748700	74.60



FII Activity (Fig in Cr)

Segment	Buy	Sell	Net
INDEX FUTURE	3,597	2,225	1,372
INDEX OPTION	23,165	23,824	(659)
STOCK FUTURE	6,976	7,196	(220)
STOCK OPTION	3,324	3,433	(109)
TOTAL	37,062	36,678	384

Fresh Long Seen In (Rising OI -Rising Price)

Scrip	OI	OI ch%	CMP	Ch%
TATAPOWER	302,60,000	12.4	88.8	6.9
ADANIPOWER	619,92,000	6.4	50.8	7.1
IBREALEST	361,52,000	6.1	75.9	5.6
ADANIPOWER	619,92,000	6.4	50.8	7.1
ADANIPOWER	619,92,000	6.4	50.8	7.1
ADANIPOWER	619,92,000	6.4	50.8	7.1
ADANIPOWER	619,92,000	6.4	50.8	7.1
ADANIPOWER	619,92,000	6.4	50.8	7.1
ADANIPOWER	619,92,000	6.4	50.8	7.1
ADANIPOWER	619,92,000	6.4	50.8	7.1

Fresh Shorts Seen In: (Rising OI -Falling Price)

Scrip	OI	OI ch%	CMP	Ch%
ACC	12,86,500	6.8	1541.4	-1.2
ACC	12,86,500	6.8	1541.4	-1.2
ACC	12,86,500	6.8	1541.4	-1.2
ACC	12,86,500	6.8	1541.4	-1.2
ACC	12,86,500	6.8	1541.4	-1.2
ACC	12,86,500	6.8	1541.4	-1.2
ACC	12,86,500	6.8	1541.4	-1.2
ACC	12,86,500	6.8	1541.4	-1.2
ACC	12,86,500	6.8	1541.4	-1.2
ACC	12,86,500	6.8	1541.4	-1.2

PCR (OI)

STOCK	T1	T2
EXIDEIND	0.85	0.54
CIPLA	0.77	0.50
DIVISLAB	0.41	0.27
ADANIPOWER	0.83	0.54
DISH TV	0.73	0.48

PCR (OI)

STOCK	T1	T2
COLPAL	0.17	0.22
GAIL	0.43	0.52
ITC	0.36	0.43
HCLTECH	0.58	0.66
BHARATFORG	0.36	0.41

Markets Snapshot

Top Price Performers

Top Performers 1D	% Change	Top Performers 1W	% Change	Top Performers 1M	% Change
SPARC	19.66	SPARC	68.36	NTCIND	221.22
IBIPL	15.97	CCCL	52.27	INDOSOLAR	126.78
WALCHANNAG	15.37	RICHAIND	45.69	KGNIND	113.25
SOFTSOL	12.85	ORIENTCARB	35.12	ERAINFRA	104.63
KGNENT	11.33	ALCHEM	29.84	WEBELSOLAR	102.22

Worst Price Performers

Worst Performers 1D	% Change	Worst Performers 1W	% Change	Worst Performers 1M	% Change
HCL-INSYS	(10.49)	HELIOSMATH	(22.53)	OUTCTYTRVL	(73.21)
CALSREF	(10.00)	STRAUSIND	(21.94)	JMDTELEFILM	(61.12)
HELIOSMATH	(9.72)	SHRENTH	(21.64)	PRITI	(50.50)
JMTAUTOLD	(9.62)	DECNGOLD	(18.65)	AADHAARVEN	(48.65)
DONEAR	(9.61)	MBSWITCH	(18.39)	RASOYPR	(47.18)

Top News :

- **Prestige Estates Mgt Guideline** : Company is confident of maintaining its EBITDA margins at 35 percent. Prestige Estates says the company has a strong launch pipeline for Q4. The company has two large projects in Hyderabad that will be launched in February. Company expect revenues to be better than 40 percent in the next two quarters and expect realizations to rise beyond Rs 6500 per square feet . Company is confident of surpassing its former sales guidance of Rs 5000 crore for FY15.

- **Ashok Leyland Mgt Guideline** : Mgt believed that The commercial vehicle (CV) industry is on a path of recovery although not to the extent expected . CV market is up only 10 percent but expects it to ramp up to 20 percent in the next couple of years. In India, for 1.2 million population, the total industry volume (TIV) should be 1.2 million, but we are at 200,000. So just imagine the long- term potential that exists in the CV segment. We were at 350,000 two years ago and it came down to 200,000. There might be little noise in the system but I am very bullish for the long term . Company is betting big on is the defence sector. Mgt expects the business to rise from Rs 600 crore to Rs 6000 crore over the next 5-6 years.

- **JPassociate** has approved the implementation agreement and scheme of arrangement for transfer of two of its cement plants with an aggregate grinding capacity of 4.9 MnTPA & 180 MW captive thermal plants at Bela & sidhi in Madhya Pradesh to ultra tech . Ultratech shall issue to JPassociate non convertible debenture worths Rs 4537.30 Crore & non convertible cumulative redeemable preference shares Rs 787 Crore .

- **Ashoka Buildcon Ltd** has informed that one of its Project SPVs viz. Ashoka Highways (Bhandara) Ltd. Which executes the Project viz. to carry on the business of construction, operation, maintenance of Chattisgarh/Maharashtra Border Wainganga Bridge Section from KM 405.000 to KM 485.000 of NH -6 in the State of Maharashtra under NHDP Phase IIIA on Build, Operate and Transfer (BOT) basis, has completed refinancing of its debt of Rs. 324 Crore with ICICI Bank Ltd.

- **CRISIL Limited** has upgraded the rating of Excel Crop to 'CRISIL A1+' from the existing rating 'CRISIL A1' for the Company's Short-term bank facilities. CRISIL has reaffirmed 'CRISIL A+/ Stable' rating for the Company's Long-term bank facilities.

- **The U.S. Food and Drug Administration (FDA)** has banned imports from Indian generic drugmaker Ipca Laboratories Ltd's plant at Ratlam in Madhya Pradesh due to violations of standard production practices.

- **Reliance Capital** has approved Preferential Allotment of 70,00,000 equity shares of Rs. 10 each at a premium of Rs. 520 per share aggregating to Rs. 371 crore to Sumitomo Mitsui Trust Bank, Limited of Japan.

- **Greek left-wing leader Alexis Tsipras** was sworn in on Monday as the prime minister of a new hardline, anti-bailout government determined to face down international lenders and end nearly five years of tough economic measures.

- **Russian Industrial Production** rose to a seasonally adjusted annual rate of 3.9%, from -0.4% in the preceding month. Analysts had expected Russian Industrial Production to rise to 0.2% last month.

- **Instituto Nacional de Estadistica** said that Spanish PPI fell to a seasonally adjusted -3.7%, from -1.5% in the preceding month. Analysts had expected Spanish PPI to rise to -1.2% last month.

- **Singaporean Industrial Production** rose to an annual rate of -1.9%, from -2.1% in the preceding month whose figure was revised up from -2.8%. Analysts had expected Singaporean Industrial Production to fall to -3.9% last month.

Result Calendar Q3FY15

Bse Coade	Company Name	Date	Bse Coade	Company Name	Date
505216	ALFREDHE	27-Jan-15	504356	ZMULTIPU	27-Jan-15
500008	AMARAJABAT	27-Jan-15	523204	ABAN	28-Jan-15
513729	AROGRANITE-\$	27-Jan-15	532268	ACCELYA	28-Jan-15
522004	BATLIBOI-\$	27-Jan-15	532921	ADANIPTS	28-Jan-15
509440	BELLGRP	27-Jan-15	533096	ADANIPOWER	28-Jan-15
512313	BIJLTEX	27-Jan-15	532331	AJANTPHARM	28-Jan-15
511505	CAPITALT	27-Jan-15	506767	ALKYLAMINE	28-Jan-15
500110	CHENNPETRO	27-Jan-15	522275	ALSTOMT&D	28-Jan-15
511243	CHOLAFIN	27-Jan-15	532830	ASTRAL	28-Jan-15
512445	DEVITRD	27-Jan-15	531310	AVAILFC	28-Jan-15
533208	EMAMIPAP	27-Jan-15	519105	AVTNPL	28-Jan-15
531508	EVEREADY	27-Jan-15	505688	BHARATGEAR	28-Jan-15
523113	FUTURSEC	27-Jan-15	532974	BIRLAMONEY-\$	28-Jan-15
512493	GARNETINT	27-Jan-15	533108	BTTL	28-Jan-15
500171	GHCL	27-Jan-15	511672	CLARUS	28-Jan-15
533150	GODREJPROP	27-Jan-15	512018	CNIRESLTD	28-Jan-15
500690	GSFC	27-Jan-15	531556	CORALFINAC	28-Jan-15
505982	HINDUJAFO-\$	27-Jan-15	526821	DAICHI-\$	28-Jan-15
532822	IDEA	27-Jan-15	500840	EIHOTEL	28-Jan-15
533181	ISFT	27-Jan-15	531162	EMAMILTD	28-Jan-15
524622	ISTRNETWK	27-Jan-15	500246	ENVAIREL	28-Jan-15
512329	JARITEX	27-Jan-15	523696	FORTISMLR	28-Jan-15
524731	JENBURPH	27-Jan-15	500150	FOSECOIND	28-Jan-15
507981	JINDHOT	27-Jan-15	532312	GEOMETRIC	28-Jan-15
532652	KTKBANK	27-Jan-15	531600	GOGIACAP	28-Jan-15
524103	LINEARPO	27-Jan-15	532482	GRANULES	28-Jan-15
505320	LYNMC	27-Jan-15	509546	GRAVISSHO	28-Jan-15
532500	MARUTI	27-Jan-15	517354	HAVELLS	28-Jan-15
531209	NUCLEUS	27-Jan-15	523844	INVICTA	28-Jan-15
502165	OCL	27-Jan-15	523405	JMFINANCIL	28-Jan-15
517536	ONWARDTEC	27-Jan-15	535648	JUSTDIAL	28-Jan-15
512626	ORBTEXP	27-Jan-15	532926	JYOTHLAB	28-Jan-15
512115	ROSEMER	27-Jan-15	513509	KALYANIFRG	28-Jan-15
512309	ROSETEX	27-Jan-15	517518	LLOYDELENG	28-Jan-15
532841	SAHYADRI	27-Jan-15	526179	LUDLOWJUT	28-Jan-15
532143	SKMEGGPROD	27-Jan-15	532796	LUMAXTECH	28-Jan-15
516108	STHINPA	27-Jan-15	521018	MARALOVER	28-Jan-15
530953	SUNILAGR-\$	27-Jan-15	531319	MARUTISE	28-Jan-15
532812	TFL	27-Jan-15	523544	MONEL	28-Jan-15
500114	TITAN	27-Jan-15	504882	NATIONSTD	28-Jan-15
532477	UNIONBANK	27-Jan-15	523558	NETWORK	28-Jan-15
504673	UNIVPRIM	27-Jan-15	500730	NOCIL	28-Jan-15
524200	VINATIORGA	27-Jan-15	532481	NOIDATOLL	28-Jan-15
524129	VINYLINDIA	27-Jan-15	500331	PIDILITIND	28-Jan-15
531668	VISIONCO	27-Jan-15	513519	PITTILAM-\$	28-Jan-15
532553	WELPROJ	27-Jan-15	590055	POLYSPIN	28-Jan-15
538538	WELSPUNENT	27-Jan-15	512481	POLYTEX	28-Jan-15
505412	WENDT	27-Jan-15	512461	PUNCTRD	28-Jan-15
512297	WHELTEX	27-Jan-15	500359	RANBAXY	28-Jan-15
501270	ZCHANAIN	27-Jan-15	532923	RJL	28-Jan-15

501154	ROSEI	28-Jan-15	523592	JENSONICOL	29-Jan-15
501061	SBBJ	28-Jan-15	507987	JPTRLES	29-Jan-15
521194	SILINV	28-Jan-15	590003	KARURVYSYA	29-Jan-15
502742	SINTEX	28-Jan-15	500245	KIRLFER	29-Jan-15
538635	SNOWMAN	28-Jan-15	523207	KOKUYOCLN	29-Jan-15
500420	TORNTPHARM	28-Jan-15	523323	KOVAI	29-Jan-15
532144	WELCORP	28-Jan-15	530139	KREONFIN	29-Jan-15
533252	WELINV	28-Jan-15	507912	LKPFIN	29-Jan-15
532016	WELLESLEY	28-Jan-15	501874	MACKINN	29-Jan-15
505583	WWTECHHOL	28-Jan-15	533259	MICROSEC	29-Jan-15
523395	3MINDIA	29-Jan-15	532440	MPSLTD	29-Jan-15
500710	AKZOINDIA	29-Jan-15	532362	NAGPI	29-Jan-15
500477	ASHOKLEY	29-Jan-15	524654	NATCAPSUQ	29-Jan-15
526187	ASHRAM	29-Jan-15	516062	NATPLY	29-Jan-15
500820	ASIANPAINT	29-Jan-15	500313	OILCOUNTUB	29-Jan-15
511501	BHARAT	29-Jan-15	532880	OMAXE	29-Jan-15
526612	BLUEDART	29-Jan-15	533632	ONELIFECAP	29-Jan-15
513375	CARBORUNIV	29-Jan-15	500315	ORIENTBANK	29-Jan-15
521210	CITYMAN	29-Jan-15	507260	ODHSUG	29-Jan-15
533167	COROENGG	29-Jan-15	532521	PALRED	29-Jan-15
516110	COUNTNDEN	29-Jan-15	537839	PHOENIXTN	29-Jan-15
533309	DALMIABHA	29-Jan-15	590121	PILANIINV	29-Jan-15
531306	DHPIND	29-Jan-15	532366	PNBGILTS	29-Jan-15
500124	DRREDDY	29-Jan-15	524570	PODARPIGQ-\$	29-Jan-15
523127	EIHAHOTELS	29-Jan-15	520111	RATNAMANI	29-Jan-15
526705	ELEMARB	29-Jan-15	531539	RISHDIGA-\$	29-Jan-15
500133	ESABINDIA	29-Jan-15	532699	ROHLTD	29-Jan-15
500135	ESSELPRO	29-Jan-15	505807	ROLCOEN	29-Jan-15
530023	FORTUNEF	29-Jan-15	531324	ROSELABS	29-Jan-15
506803	FULFORD	29-Jan-15	509423	SEL	29-Jan-15
513108	GANDHITUBE-\$	29-Jan-15	532498	SHRIRAMCIT	29-Jan-15
531953	GCCL	29-Jan-15	533228	SKSMICRO	29-Jan-15
531375	GCCLINP	29-Jan-15	505827	SNL	29-Jan-15
532622	GDL	29-Jan-15	500295	SSLT	29-Jan-15
530855	GDLLEAS	29-Jan-15	530883	SUCROSA	29-Jan-15
531399	GGAUTO	29-Jan-15	508969	SULABEN	29-Jan-15
531360	GOLECHA	29-Jan-15	500407	SWARAJENG	29-Jan-15
506076	GRINDWELL	29-Jan-15	532390	TAJGVK	29-Jan-15
511441	GUJCRED	29-Jan-15	521228	TATIAGLOB	29-Jan-15
517372	GUJINTRX-\$	29-Jan-15	532349	TCI	29-Jan-15
500185	HCC	29-Jan-15	533393	TCIDEVELOP	29-Jan-15
500010	HDFC	29-Jan-15	531652	THIRDFIN	29-Jan-15
524735	HIKAL	29-Jan-15	511559	TIMESGTY	29-Jan-15
523398	HITACHIOM	29-Jan-15	500414	TIMEX-\$	29-Jan-15
532835	ICRA	29-Jan-15	524717	TITANBIO	29-Jan-15
532659	IDFC	29-Jan-15	530045	TITANSEC	29-Jan-15
532636	IIFL	29-Jan-15	500251	TRENT	29-Jan-15
532150	INDRAMEDCO	29-Jan-15	532371	TTML	29-Jan-15
504810	INFORTEC	29-Jan-15	512117	TWIROST	29-Jan-15
504786	INVPRECQ	29-Jan-15	532398	UMESLTD	29-Jan-15
511208	IVC	29-Jan-15	530505	UPERGANGES	29-Jan-15
532705	JAGRAN	29-Jan-15	532156	VAIBHAVGBL	29-Jan-15

512511	VARUNME	29-Jan-15	534063	FUTSOL	30-Jan-15
517393	VINTRON	29-Jan-15	505714	GABRIEL	30-Jan-15
507880	VIPIND	29-Jan-15	524624	GAGAN	30-Jan-15
501370	WALCHPF	29-Jan-15	509563	GARWAMAR	30-Jan-15
538268	WONDERLA	29-Jan-15	502856	GNDHISP	30-Jan-15
511601	YASHMGM	29-Jan-15	500670	GNFC	30-Jan-15
505163	ZFSTEERING	29-Jan-15	513343	GRANDFONRY	30-Jan-15
512587	ZODJRD MKJ	29-Jan-15	532015	GRAVITY-\$	30-Jan-15
503893	ZSATYASL	29-Jan-15	530469	GSLSEC	30-Jan-15
526921	21STCENMGM	30-Jan-15	505712	GUJAUTO	30-Jan-15
524348	AARTIDRUGS	30-Jan-15	530141	GYANDEV	30-Jan-15
512599	ADANIENT	30-Jan-15	532281	HCLTECH	30-Jan-15
530431	ADORFO-\$	30-Jan-15	519552	HERITGFOOD	30-Jan-15
500003	AEGISLOG	30-Jan-15	500189	HINDUJAVEN	30-Jan-15
506120	ALNATRD	30-Jan-15	526683	HOTELRUGBY	30-Jan-15
521097	AMARJOTHI	30-Jan-15	532174	ICICIBANK	30-Jan-15
531761	AMULEAS	30-Jan-15	500106	IFCI	30-Jan-15
532418	ANDHRABANK	30-Jan-15	506945	IGLFXPL-B	30-Jan-15
590122	ASHIKACR	30-Jan-15	532100	INDOCITY-\$	30-Jan-15
533271	ASHOKA	30-Jan-15	532612	INDOCO	30-Jan-15
532134	BANKBARODA	30-Jan-15	504092	INDOKEM	30-Jan-15
524687	BASANTGL-\$	30-Jan-15	532894	INDOWIND	30-Jan-15
509480	BERGEPAIN T	30-Jan-15	531841	INDUSFIN	30-Jan-15
511698	BHAGYFN	30-Jan-15	504746	INLCM	30-Jan-15
524723	BIJHANS	30-Jan-15	505358	INTEGRAEN	30-Jan-15
500059	BINANIIND	30-Jan-15	538835	INTELLECT	30-Jan-15
535620	BINNYMILLS	30-Jan-15	506161	ISHWATR	30-Jan-15
500069	BNKCAP	30-Jan-15	509715	JAYSHREETEA	30-Jan-15
526925	BOBSHELL	30-Jan-15	524592	JDORGOCHEM	30-Jan-15
532405	CCSIN	30-Jan-15	500228	JSWSTEEL	30-Jan-15
517544	CENTUM	30-Jan-15	500165	KANSAINER	30-Jan-15
500147	CMIFPE-\$	30-Jan-15	505890	KENNAMET	30-Jan-15
522231	CONART-\$	30-Jan-15	531692	KHYATI	30-Jan-15
504340	CONFINT	30-Jan-15	532352	KIRLMU	30-Jan-15
506935	CONTCHM	30-Jan-15	500241	KIRLOSBROS	30-Jan-15
531067	CONTILI	30-Jan-15	502150	KLYNCEM	30-Jan-15
526269	CRSTCHM	30-Jan-15	511138	KOTHARIFIN	30-Jan-15
500096	DABUR	30-Jan-15	503626	KSHITIJ	30-Jan-15
500097	DALMIASUG	30-Jan-15	531164	LADIAMO	30-Jan-15
505703	DECANBRG	30-Jan-15	513605	LANCO INDUST	30-Jan-15
526285	DIVYAJYQ	30-Jan-15	500250	LGBBROSLTD	30-Jan-15
532927	ECLERX	30-Jan-15	533007	LGBFORGE	30-Jan-15
513452	ELANGO	30-Jan-15	517463	LINAKS	30-Jan-15
503681	ELCIDIN	30-Jan-15	517449	MAGNAELQ-\$	30-Jan-15
504387	ELFTRDG	30-Jan-15	532313	MAHLIFE	30-Jan-15
517477	ELNET-\$	30-Jan-15	506919	MAKERSL-\$	30-Jan-15
509525	EMPIND	30-Jan-15	526891	MKTCREAT	30-Jan-15
532178	ENGINEERSIN	30-Jan-15	509196	MMRUBBR-B	30-Jan-15
526574	ENTRINT	30-Jan-15	509760	MODRNSH	30-Jan-15
514060	EVERTEX	30-Jan-15	524084	MONSANTO	30-Jan-15
500650	EXCELINDUS	30-Jan-15	532892	MOTILALOF S	30-Jan-15
531754	FINCOM	30-Jan-15	511766	MUTHTFN	30-Jan-15

531049	NEELKAN	30-Jan-15	532733	SUNTV	30-Jan-15
500452	NEPCAGRO	30-Jan-15	517201	SWITCHTE	30-Jan-15
500301	NEPCMICON	30-Jan-15	531003	SWRNASE	30-Jan-15
531077	NEPCPAPER	30-Jan-15	511447	SYLPH	30-Jan-15
521192	NEPCTEX	30-Jan-15	500800	TATAGLOBAL	30-Jan-15
524558	NEULANLAB	30-Jan-15	532755	TECHM	30-Jan-15
523209	NICCOUCO	30-Jan-15	501421	TECHNVISN	30-Jan-15
512103	NIDHGRN	30-Jan-15	500411	THERMAX	30-Jan-15
521009	NIWASSP	30-Jan-15	500413	THOMASCOOK	30-Jan-15
532555	NTPC	30-Jan-15	517407	TOYAMAQ-\$	30-Jan-15
538537	OMANSH	30-Jan-15	526582	TPLPLAST	30-Jan-15
514460	OSWAYRN	30-Jan-15	530783	TRANSASIA	30-Jan-15
530555	PARACABLES-\$	30-Jan-15	505978	TRITONV	30-Jan-15
511702	PARSHINV	30-Jan-15	502281	TRIVENIGQ-\$	30-Jan-15
521080	PASARI	30-Jan-15	504273	TUMUSEL	30-Jan-15
531352	PEETISEC	30-Jan-15	511096	TVOLCON	30-Jan-15
519439	PIONAGR	30-Jan-15	519273	UNOINDL	30-Jan-15
507864	PIONRINV	30-Jan-15	517146	USHAMART	30-Jan-15
532933	PORWAL	30-Jan-15	536709	VAKPOWINF	30-Jan-15
531256	PRAVEEN	30-Jan-15	531650	VAXHS	30-Jan-15
531802	PRERINFRA	30-Jan-15	511110	VBDESAI	30-Jan-15
519262	PRIMAGR	30-Jan-15	524038	VENLONENT	30-Jan-15
531246	PRIMAIN	30-Jan-15	532401	VIJAYABANK	30-Jan-15
512217	PRISMMEDI	30-Jan-15	530401	VINYOFL	30-Jan-15
532689	PVR	30-Jan-15	500238	WHIRLPOOL	30-Jan-15
532866	QUINTEGRA	30-Jan-15	590013	XPROINDIA	30-Jan-15
530253	RAJTUBE	30-Jan-15	512345	YASTF	30-Jan-15
505817	REILELEC	30-Jan-15	533287	ZEELEARN	30-Jan-15
530271	RICHUNV	30-Jan-15	509046	ZLEENCON	30-Jan-15
504365	RIDHISYN	30-Jan-15	511359	ADMANUM	31-Jan-15
530917	RRSECUR	30-Jan-15	537292	AGRITECH	31-Jan-15
523025	SAFARIND	30-Jan-15	531147	ALICON	31-Jan-15
511403	SAJEEV	30-Jan-15	512008	AMANITRA	31-Jan-15
515043	SAINTGOBAIN	30-Jan-15	531519	ANKUSHFI	31-Jan-15
531893	SAWABUSI	30-Jan-15	526125	ARHNTTO	31-Jan-15
532638	SHOPERSTOP	30-Jan-15	533138	ASTEC	31-Jan-15
503696	SHRENTI	30-Jan-15	532493	ASTRAMICRO	31-Jan-15
523790	SHUKJEW	30-Jan-15	512038	ASWTR	31-Jan-15
531219	SHYAMAINFO	30-Jan-15	517246	BCCFUBA	31-Jan-15
530439	SIDDHA	30-Jan-15	530879	BHILTEX	31-Jan-15
500550	SIEMENS	30-Jan-15	502216	BOMBPOT	31-Jan-15
523164	SIPIND	30-Jan-15	531203	BRANDREAL	31-Jan-15
504398	SJCORP	30-Jan-15	532929	BRIGADE	31-Jan-15
531506	SKRABUL	30-Jan-15	507486	CAPRO	31-Jan-15
532419	SMARTLINK	30-Jan-15	530789	CEEJAY	31-Jan-15
512014	SOBME	30-Jan-15	538786	CIL	31-Jan-15
502460	SOLIDCO	30-Jan-15	531210	COLINZ	31-Jan-15
532872	SPARC	30-Jan-15	521216	DHANROTO	31-Jan-15
514442	SRIKPRIND	30-Jan-15	503796	DIGJAM	31-Jan-15
523351	STDSHOE	30-Jan-15	532488	DIVISLAB	31-Jan-15
590071	SUNDARMFIN	30-Jan-15	531533	ECOM	31-Jan-15
501110	SUNRINV	30-Jan-15	500125	EIDPARRY	31-Jan-15

531155	EPSOMPRO	31-Jan-15	513488	SSWRL	31-Jan-15
500086	EXIDEIND	31-Jan-15	590129	STARDELTA	31-Jan-15
530705	FLORATX	31-Jan-15	526231	STDSFAC	31-Jan-15
514167	GANECOS	31-Jan-15	538876	STSERV	31-Jan-15
531608	GORANIN	31-Jan-15	505590	SVPGLOB	31-Jan-15
500300	GRASIM	31-Jan-15	505685	TAPARIA	31-Jan-15
532744	GTNTEX	31-Jan-15	526576	TECHIN	31-Jan-15
503689	HEALINV	31-Jan-15	524204	TEEAI	31-Jan-15
532041	HINDBIO	31-Jan-15	532856	TIMETECHNO	31-Jan-15
531743	HIRAUTO	31-Jan-15	530475	TINNARUBR	31-Jan-15
538838	ICL	31-Jan-15	531814	TIRSARJ	31-Jan-15
531672	INANISEC	31-Jan-15	500412	TIRUMALCHM	31-Jan-15
522245	IYKOTHITE	31-Jan-15	532779	TORNTPOWER	31-Jan-15
505212	JAINEX	31-Jan-15	531279	TRISHAKT	31-Jan-15
538564	JAMESWARREN	31-Jan-15	532966	TWL	31-Jan-15
530405	JINDCAP	31-Jan-15	524408	UNIVSTAR	31-Jan-15
530915	JRFOODS	31-Jan-15	531762	UNJHAFOR	31-Jan-15
514448	JYOTIRES	31-Jan-15	526987	URJAGLOBA	31-Jan-15
533297	KBIL	31-Jan-15	531894	VATSAMUS	31-Jan-15
508993	KEDIACN	31-Jan-15	512517	VINVANI	31-Jan-15
500239	KGDENIM	31-Jan-15	534392	VSSL	31-Jan-15
500243	KIRLOSIND	31-Jan-15	538873	WINYCOMM	31-Jan-15
532732	KKCL	31-Jan-15	520119	ASAL	02-Feb-15
509048	LANCORHOL	31-Jan-15	509009	AUSOMENT	02-Feb-15
517415	LEENEE	31-Jan-15	506285	BAYERCROP	02-Feb-15
530243	MANGASOF	31-Jan-15	500493	BHARATFORG	02-Feb-15
530537	MANRAJH	31-Jan-15	532443	CERA	02-Feb-15
531221	MAYURFL	31-Jan-15	511742	CHOKSEC	02-Feb-15
526251	MIDEASTP	31-Jan-15	523369	DCMSRMIND-\$	02-Feb-15
505594	MULTIIN	31-Jan-15	523708	EIMCOELECO	02-Feb-15
515037	MURUDCERA	31-Jan-15	500142	FGP	02-Feb-15
537291	NATHBIOGEN	31-Jan-15	511676	GICHSGFIN	02-Feb-15
502168	NCLIND-\$	31-Jan-15	522289	IFMIMPX	02-Feb-15
531272	NIKKIGL	31-Jan-15	532814	INDIANB	02-Feb-15
508875	NITINALOY	31-Jan-15	532054	KDDL-\$	02-Feb-15
514326	PATSPINLTD	31-Jan-15	500252	LAXMIMACH	02-Feb-15
530669	PRESOFI	31-Jan-15	533012	LPDC	02-Feb-15
526009	PROCAL	31-Jan-15	505324	MANUGRAPH-\$	02-Feb-15
507962	RAJATH	31-Jan-15	500890	MODIRUBBER	02-Feb-15
520073	RAUNAQAU	31-Jan-15	520059	MUNJALAU	02-Feb-15
519230	RICHIRICH	31-Jan-15	506107	PRECTRA	02-Feb-15
532527	RKFORGE	31-Jan-15	532805	REDINGTON	02-Feb-15
531869	SACHEMT	31-Jan-15	532915	RELIGARE	02-Feb-15
530265	SAINIK	31-Jan-15	535322	REPCOHOME	02-Feb-15
530993	SARTHAKGL	31-Jan-15	509845	RJSHAH	02-Feb-15
532191	SBT	31-Jan-15	522034	SHANTIGEAR	02-Feb-15
531745	SGLOBEX	31-Jan-15	526739	SHAWGELTIN	02-Feb-15
519031	SHAHFOOD	31-Jan-15	503229	SIMPLXREA	02-Feb-15
519397	SHINDL	31-Jan-15	531359	SRAMSET	02-Feb-15
522152	SOLIMAC	31-Jan-15	504908	SSDUNC-\$	02-Feb-15
516038	SOMAPPR	31-Jan-15	517168	SUBROS	02-Feb-15
524667	SOTL	31-Jan-15	533306	SUMMITSEC	02-Feb-15

512527	SUPER-\$	02-Feb-15	524804	AUROPHARMA	04-Feb-15
526755	VELHO	02-Feb-15	532454	BHARTIARTL	04-Feb-15
514470	WINSOMTX-\$	02-Feb-15	500020	BOMDYEING	04-Feb-15
532368	YBRANTDIGI	02-Feb-15	532483	CANBK	04-Feb-15
500410	ACC	03-Feb-15	500280	CENTENKA	04-Feb-15
517041	ADORWELD	03-Feb-15	532885	CENTRALBK	04-Feb-15
530723	ASITCFIN	03-Feb-15	500040	CENTURYTEX	04-Feb-15
533303	BFINVEST	03-Feb-15	521056	CHESLINTEX	04-Feb-15
532430	BFUTILITIE	03-Feb-15	522261	DOLPHINOFF-\$	04-Feb-15
500825	BRITANNIA	03-Feb-15	533248	GPPL	04-Feb-15
500093	CROMPGREAV	03-Feb-15	506480	GULFOILCOR	04-Feb-15
502137	DECCANCE-\$	03-Feb-15	508486	HAWKINCOOK	04-Feb-15
505700	ELECON	03-Feb-15	501295	IITL	04-Feb-15
522074	ELGIEQUIP	03-Feb-15	500210	INGERRAND	04-Feb-15
530835	ELTROL	03-Feb-15	512237	JAICORPLTD	04-Feb-15
500676	GSKCONS	03-Feb-15	502901	JAMSHRI-\$	04-Feb-15
500182	HEROMOTOCO	03-Feb-15	506943	JBCHEPHARM	04-Feb-15
531968	IITLPROJ	03-Feb-15	500380	JKLAKSHMI	04-Feb-15
533047	IMFA	03-Feb-15	507779	KANPRPLA	04-Feb-15
504741	INDIANHUME	03-Feb-15	537750	KIRANVYPAR	04-Feb-15
534816	INFRATEL	03-Feb-15	524000	MAGMA	04-Feb-15
519606	INTEGFD	03-Feb-15	506261	MODISNME-\$	04-Feb-15
532286	JINDALSTEL	03-Feb-15	523630	NFL	04-Feb-15
532019	LCCINFOTEC	03-Feb-15	500672	NOVARTIND	04-Feb-15
500257	LUPIN	03-Feb-15	535657	OONE	04-Feb-15
531528	MAARSOFTW	03-Feb-15	506579	ORIENTCQ-\$	04-Feb-15
590078	MAITHANALL	03-Feb-15	500458	PHILCORP	04-Feb-15
531213	MANAPPURAM	03-Feb-15	531768	POLYMED	04-Feb-15
538834	MEL	03-Feb-15	533168	ROSSELLIND	04-Feb-15
503772	MODWOOL	03-Feb-15	511654	SUGALDAM	04-Feb-15
532641	NDL	03-Feb-15	520056	SUNCLAYLTD	04-Feb-15
533098	NHPC	03-Feb-15	500403	SUNDRMFAST	04-Feb-15
506532	NITTAGELA-\$	03-Feb-15	500400	TATAPOWER	04-Feb-15
502420	ORIENTPPR	03-Feb-15	533158	THANGAMAYL	04-Feb-15
532461	PNB	03-Feb-15	590005	TIDEWATER	04-Feb-15
531870	POPULARES	03-Feb-15	504973	TUBEINVEST	04-Feb-15
521149	PRIMEURB	03-Feb-15	500231	UMANGDAIR	04-Feb-15
514223	RAMGOPOLY	03-Feb-15	519224	WILLAMAGOR	04-Feb-15
500387	SHREECEM	03-Feb-15	519214	WILLIMFI	04-Feb-15
526877	SIDDHEGA	03-Feb-15	532683	AIAENG	05-Feb-15
505650	SKYLMILAR	03-Feb-15	532480	ALBK	05-Feb-15
507753	SREERAYA	03-Feb-15	513117	AMFORG	05-Feb-15
532348	SUBEX	03-Feb-15	531878	ANJANIFIN	05-Feb-15
590072	SUNDRMBRAK	03-Feb-15	532259	APARINDS	05-Feb-15
532509	SUPRAJIT	03-Feb-15	530429	ASHISHPO	05-Feb-15
534369	TBZ	03-Feb-15	530885	AURUMSOFT	05-Feb-15
505400	TEXINFRA	03-Feb-15	505010	AUTOAXLES	05-Feb-15
533326	TEXRAIL	03-Feb-15	531719	BHAGCHEM	05-Feb-15
522113	TIMKEN	03-Feb-15	524506	CORALAB	05-Feb-15
506687	TRANSPEK-\$	03-Feb-15	532173	CYBERTECH	05-Feb-15
532343	TVSMOTOR	03-Feb-15	532424	GODREJCP	05-Feb-15
590073	WHEELS	03-Feb-15	526797	GREENPLY	05-Feb-15
530889	ALKA	04-Feb-15	530001	GUJALKALI	05-Feb-15
532047	ASIANFILMS	04-Feb-15	509631	HEG	05-Feb-15

500306	JAYKAY	05-Feb-15	513575	STERS	06-Feb-15
533148	JSWENERGY	05-Feb-15	508963	STRLGUA	06-Feb-15
507598	KLRF	05-Feb-15	532782	SUTLEJTEX	06-Feb-15
504258	LAKSELEC	05-Feb-15	500770	TATACHEM	06-Feb-15
515059	MADHUDIN	05-Feb-15	500470	TATASTEEL	06-Feb-15
500126	MERCK	05-Feb-15	509945	THACKER	06-Feb-15
524709	NAGAAGRI	05-Feb-15	530199	THEMISMED	06-Feb-15
535755	PFRL	05-Feb-15	532515	TVTODAY	06-Feb-15
500338	PRISMCEM	05-Feb-15	531574	VASINFRA	06-Feb-15
532524	PTC	05-Feb-15	530063	YASHRAJC	06-Feb-15
509220	PTL-₹	05-Feb-15	532230	BENGALT	07-Feb-15
531562	PUSHPIN	05-Feb-15	530803	BHAGERIA	07-Feb-15
500260	RAMCOCEM	05-Feb-15	530307	CHAMANSEQ-₹	07-Feb-15
532369	RAMCOIND	05-Feb-15	531599	FDC	07-Feb-15
538891	SIPROJECTS	05-Feb-15	524226	GAEL	07-Feb-15
533206	SJVN	05-Feb-15	517300	GIPCL	07-Feb-15
531638	SURAJLTD-₹	05-Feb-15	513528	GLITTEKG	07-Feb-15
519483	TAIIND-₹	05-Feb-15	504176	HIGHENE	07-Feb-15
532513	TVSELECT	05-Feb-15	500500	HINDMOTORS	07-Feb-15
502986	VTL	05-Feb-15	524494	IPCALAB	07-Feb-15
509650	ZHINDHSG	05-Feb-15	532644	JKCEMENT	07-Feb-15
532774	AFL	06-Feb-15	521127	KHTRFIB	07-Feb-15
530973	ALFAICA	06-Feb-15	526947	LAOPALA	07-Feb-15
500877	APOLLOTYRE	06-Feb-15	500333	PIXTRANS	07-Feb-15
520121	ARCEEIN	06-Feb-15	526490	PRATIK	07-Feb-15
531179	ARMANFIN	06-Feb-15	533470	RUSHIL	07-Feb-15
532382	BALAJITELE	06-Feb-15	502450	SESHAPAPER	07-Feb-15
500038	BALRAMCHIN	06-Feb-15	533281	TECHNO	07-Feb-15
532834	CAMLINFIN	06-Feb-15	523856	TORRCABS	07-Feb-15
500085	CHAMBLFERT	06-Feb-15	522122	VOITHPAPR-₹	07-Feb-15
505242	DYNAMATECH	06-Feb-15	533269	WABAG	07-Feb-15
532181	GMDCLTD	06-Feb-15	516030	YASHPPR-₹	07-Feb-15
505737	INTLCOMBQ	06-Feb-15	522108	YUKEN-₹	07-Feb-15
532617	JETAIRWAYS	06-Feb-15	524208	AARTIIND	09-Feb-15
590084	KANCOENT	06-Feb-15	538653	AMMLTD	09-Feb-15
521242	KANDAGIRI-₹	06-Feb-15	532888	ASIANTILES	09-Feb-15
517344	MINDTECK	06-Feb-15	530233	AUROLAB	09-Feb-15
520043	MUNJALSHOW	06-Feb-15	531278	AXISCAP	09-Feb-15
532529	NDTV	06-Feb-15	532992	CHLLTD	09-Feb-15
511658	NETTLINX	06-Feb-15	504697	GALADA	09-Feb-15
526371	NMDC	06-Feb-15	523586	INDTONER-₹	09-Feb-15
532460	PONNIERODE	06-Feb-15	523248	MACPLASQ-₹	09-Feb-15
523874	PRECISION	06-Feb-15	532865	MEGH	09-Feb-15
526109	PRICOL	06-Feb-15	500307	NIRLON	09-Feb-15
531412	RADIXIND	06-Feb-15	504879	ORIENTABRA-₹	09-Feb-15
521240	SAMBANDAM-₹	06-Feb-15	504093	PANAENERG-₹	09-Feb-15
516003	SARDAPLY	06-Feb-15	505800	RANEHOLDIN	09-Feb-15
521182	SEASONF	06-Feb-15	531944	SERVOTEC	09-Feb-15
503804	SHRIDINE-₹	06-Feb-15	530759	STERTOOLS-₹	09-Feb-15
533014	SICAGEN	06-Feb-15	506222	STYABS	09-Feb-15
505192	SMLISUZU	06-Feb-15	522267	VJLAXMIE-₹	09-Feb-15

531335	ZYDUSWELL	09-Feb-15	532810	PFC	11-Feb-15
500002	ABB	10-Feb-15	532503	RAJPALAYAM-\$	11-Feb-15
500303	ABIRLANUVO	10-Feb-15	520151	SHREYAS	11-Feb-15
526331	ADVMULT	10-Feb-15	512153	SPECMKT	11-Feb-15
506947	ADVPETR-B	10-Feb-15	530151	VIJAYTX	11-Feb-15
500048	BEML	10-Feb-15	509038	VOLLF	11-Feb-15
514045	BSL	10-Feb-15	538563	ADARSH	12-Feb-15
532321	CADILAHC	10-Feb-15	531223	ANJANI-\$	12-Feb-15
534804	CARERATING	10-Feb-15	530799	ANNAINFRA	12-Feb-15
504671	CHASBRT	10-Feb-15	500031	BAJAJELEC	12-Feb-15
523736	DPL	10-Feb-15	508939	BLCISER	12-Feb-15
513059	GSAUTO	10-Feb-15	523019	BNRSEC	12-Feb-15
500170	GTNINDS	10-Feb-15	530809	BNRUDY	12-Feb-15
534734	ICVLCHEM	10-Feb-15	530609	CARNATIN	12-Feb-15
536868	INTELSOFT	10-Feb-15	530839	CLIOINFO	12-Feb-15
517334	MOTHERSUMI	10-Feb-15	530779	DYNAMICP	12-Feb-15
530697	NEELKATEC	10-Feb-15	531463	GBLINFRA	12-Feb-15
505355	NESCO	10-Feb-15	505250	GGDANDE	12-Feb-15
526721	NICCOPAR-\$	10-Feb-15	507815	GILLETTE	12-Feb-15
538860	PANAFIC	10-Feb-15	526931	HRYNShP-\$	12-Feb-15
526801	PSL	10-Feb-15	532001	INDCTST	12-Feb-15
512099	PUNITCO	10-Feb-15	538422	JACKSON	12-Feb-15
517496	RICOHQ	10-Feb-15	526558	JAMEHOT	12-Feb-15
530053	RREALTY	10-Feb-15	511092	JMDTELEFILM	12-Feb-15
500350	RSWM	10-Feb-15	516078	JUMBO	12-Feb-15
530073	SANGHVIMOV	10-Feb-15	530201	KALLAM-\$	12-Feb-15
530035	SANTOSHf	10-Feb-15	535730	KHOOB SURAT	12-Feb-15
511185	SURYAKR	10-Feb-15	517471	KOAToolIN	12-Feb-15
531190	TAVERNIER	10-Feb-15	519421	KSE-\$	12-Feb-15
531644	TOKYOFIN	10-Feb-15	531689	MAHAREM	12-Feb-15
500418	TOKYOPLAST	10-Feb-15	530897	NGIND-\$	12-Feb-15
530363	UGARSUGAR-\$	10-Feb-15	511632	OLYMTFI	12-Feb-15
531091	UNITDCR	10-Feb-15	532827	PAGEIND	12-Feb-15
500780	ZUARIGLOB	10-Feb-15	506122	PANKPIY	12-Feb-15
506166	APIS	11-Feb-15	535658	PAWANSUT	12-Feb-15
526851	AREXMIS	11-Feb-15	500459	PGHH	12-Feb-15
519174	ASHAI	11-Feb-15	526043	POLYCHMP	12-Feb-15
506820	ASTRAZEN	11-Feb-15	538452	QUASAR	12-Feb-15
500043	BATAINDIA	11-Feb-15	513558	REALSTR-\$	12-Feb-15
500547	BPCL	11-Feb-15	503837	SHRAJSYNQ-\$	12-Feb-15
520131	COARO	11-Feb-15	523236	SHRENUJ	12-Feb-15
500645	DEEPAKFERT	11-Feb-15	532945	SHRIRAMEPC	12-Feb-15
531237	DHRUVCA	11-Feb-15	533018	SIMPLXMIL	12-Feb-15
500164	GODREJIND	11-Feb-15	533019	SIMPLXPAP	12-Feb-15
501298	INDPRUD	11-Feb-15	526901	SONALAD	12-Feb-15
531882	KWALITY	11-Feb-15	531370	SPARCSYS	12-Feb-15
502958	LAKSHMIMIL-\$	11-Feb-15	526161	SPENTA	12-Feb-15
530557	NCLRESE	11-Feb-15	526827	SPICEISL-\$	12-Feb-15

500399	STEELCO	12-Feb-15	534184	NAGAROIL	13-Feb-15
523425	SUNRAJDI	12-Feb-15	514332	NEOINFRA	13-Feb-15
530937	UMSTECHNO	12-Feb-15	500790	NESTLEIND	13-Feb-15
523519	UNIOFFICE	12-Feb-15	511714	NIMBSPROJ	13-Feb-15
532035	UNISTRMU	12-Feb-15	511674	OLYCAP	13-Feb-15
521188	UNITEDTE	12-Feb-15	514324	OMNITEX	13-Feb-15
526941	VAICC	12-Feb-15	531257	PRATIKSH	13-Feb-15
526775	VALIANT-\$	12-Feb-15	535514	PRIMECAPM	13-Feb-15
515099	VERTICLIND	12-Feb-15	515127	RAMMA	13-Feb-15
511122	1STCUS	13-Feb-15	531583	RAP	13-Feb-15
513513	ADITYA	13-Feb-15	531033	REGAL	13-Feb-15
521174	ARORAFIB	13-Feb-15	521222	SANBLUE	13-Feb-15
513401	ASHIS	13-Feb-15	507952	SHIKHARLETR	13-Feb-15
517203	BEELE	13-Feb-15	506655	SUDARSHEM	13-Feb-15
519500	BKV	13-Feb-15	531432	SYTIXSE	13-Feb-15
532324	CINEVISTA	13-Feb-15	531411	TUNITEX	13-Feb-15
512213	CLASELE	13-Feb-15	531831	UNISH	13-Feb-15
530859	COSBOARD	13-Feb-15	511690	WARNER	13-Feb-15
505678	CPECLTD	13-Feb-15	509910	ZSOUTGAS	13-Feb-15
532783	DAAWAT	13-Feb-15	531047	ADVPOWER	14-Feb-15
530171	DAULAT	13-Feb-15	508869	APOLLOHOSP	14-Feb-15
535486	DELTALTD	13-Feb-15	531900	CCLINTER	14-Feb-15
531252	FARRYIND	13-Feb-15	531119	CEENIK	14-Feb-15
534757	FOCUSIRL	13-Feb-15	533144	COX&KINGS	14-Feb-15
531196	GAGANPO	13-Feb-15	512485	DHANCOT	14-Feb-15
521176	GANGOTRI	13-Feb-15	526073	GALXBRG	14-Feb-15
531479	GLOBAL	13-Feb-15	532133	IFGLREFRAC	14-Feb-15
530263	GLOBALCA	13-Feb-15	531129	INANI	14-Feb-15
531737	GREENCREST	13-Feb-15	512025	INERTIAST	14-Feb-15
511543	GSBFIN	13-Feb-15	526409	KALPENA	14-Feb-15
531918	HINDAPL	13-Feb-15	517467	MARSONS	14-Feb-15
517044	IDM	13-Feb-15	526935	MBPARIKH	14-Feb-15
500202	INDLEASE	13-Feb-15	509040	NETLINK	14-Feb-15
504840	KAIRA	13-Feb-15	521246	PARASPETRO	14-Feb-15
504269	KHAITANELE	13-Feb-15	519359	POONADAL	14-Feb-15
523652	KPLASTIK	13-Feb-15	530061	ROCKTHR	14-Feb-15
530421	KUWERIN	13-Feb-15	530125	SAMRATPH-\$	14-Feb-15
531288	LEADFIN	13-Feb-15	524703	SANDUPHQ	14-Feb-15
506113	LIFELINE	13-Feb-15	526532	SFPIL	14-Feb-15
532537	LUMAXAUTO	13-Feb-15	530797	SHGANEL	14-Feb-15
500520	M&M	13-Feb-15	523283	SUPERHOUSE	14-Feb-15
514456	METROOV	13-Feb-15	512221	TARCF	14-Feb-15
532164	MINOLTAF	13-Feb-15	590035	TIRFOAM-\$	15-Feb-15
500279	MIRCELECTR	13-Feb-15	500425	AMBUJACEM	18-Feb-15
501343	MOTOGENFIN	13-Feb-15	500166	GOODRICKE	28-Feb-15
526299	MPHASIS	13-Feb-15			

Consensus Estimate Q3FY15

BSE Code	NSE Code	Sales (Cr.)	Sales Growth(%)	PAT(Cr.)	PAT Growth (%)
500008	AMARAJABAT	1018	18.00	99	3.90
500477	ASHOKLEY	3059	56.60	7	LP
500086	EXIDEIND	1572	20.80	115	47.70
532500	MARUTI	12414	14.00	835	22.70
517354	HAVELLS	1297	9.50	110	(7.60)
500550	SIEMENS	2376	(0.80)	54	(17.40)
500411	THERMAX	1119	10.40	80	19.50
500300	GRASIM	1532	5.20	96	(22.90)
500820	ASIANPAINT	3952	15.80	398	20.70
500096	DABUR	2171	14.00	278	14.30
531162	EMAMILTD	684	17.00	168	11.40
500331	PIDILITIND	1131	17.20	131	21.70
532488	DIVISLAB	839	22.00	239	9.00
500124	DRREDDY	3719	5.20	523	(8.00)
500359	RANBAXY	2807	(3.00)	132	9.60
500420	TORNTPHARM	1209	24.30	152	14.50
532705	JAGRAN	486	6.70	74	8.70
532689	PVR	405	20.00	12	(10.40)
532733	SUNTV	570	12.10	203	9.20
500228	JSWSTEEL	11103	(7.20)	602	(6.60)
500295	SESAGOA	19276	(0.70)	1693	(4.50)
535648	JUSTDIAL	156	30.00	35	16.80
502742	SINTEX	1736	25.00	118	32.50
533150	GODREJPROP	404	67.10	59	56.60
532313	MAHLIFE	198	37.60	28	(5.00)
532638	SHOPERSTOP	832	16.90	24	39.30
500114	TITAN	2969	12.00	209	17.50
532281	HCLTECH	8954	9.40	1789	19.60
532755	TECHM	5669	15.70	797	24.10
532822	IDEA	8053	21.80	884	88.90
532174	ICICIBANK	4839	13.70	2919	15.30
532134	BANKBARODA	3570	16.80	1317	25.70
532477	UNIONBANK	2163	10.10	392	12.30
500010	HDFC	2027	15.00	1454	13.80
532659	IDFC	700	5.30	439	(12.40)
500477	ASHOKLEY	3269	67.40	33	nm
532500	MARUTI	12597	15.60	893	31.10

Result Q3FY15

NSE Code	BSE Code	Sales (Cr.)	Sales Growth(%)	PAT(Cr.)	PAT Growth (%)
MHRIL	533088	207	9.00	24	15.71
Biocon Ltd.	532523	779	10.10	91	(13.30)
PHILPCARB	506590	607	8.20	7	145.22
RML	532661	193	19.10	3	(52.83)
PRESTIGE	533274	609	41.60	100	23.55
EDELWEISS	532922	959	49.50	83	43.40
COLPAL	500830	996	11.80	131	15.98
COROMANDEL	506395	2962	7.50	120	27.40
ATUL	500027	627	5.90	54	(17.67)
KOLTEPATIL	532924	220	17.20	20	(3.00)

USHDI	511736	2047	(29.10)	33	3.50
RPGLIFE	532983	56	(1.10)	3	183.77
MIRZAINI	526642	229	32.70	16	42.65
EPCIN	523754	39	(10.90)	1	(36.59)
AIL	532309	391	(26.70)	15	296.57
ORIENTHOT	500314	82	(0.60)	1	11.76
ULTRATECH	532538	5947	15.00	400	1.20
LIBERTSHOE	526596	145	20.20	4	15.51
EMKAY	532737	22	9.50	2	1938.50
RBL	532987	101	9.20	4	78.37
WABCOINDIA	533023	318	22.50	28	40.25

Economic Calendar					
	Monday 26-Jan-15	Tuesday 27-Jan-15	Wednesday 28-Jan-15	Thursday 29-Jan-15	Friday 30-Jan-15
US		Core Durable Goods Orders m/m , Durable Goods Orders m/m , S&P/CS Composite-20 HPI y/y , CB Consumer Confidence , New Home Sales , Richmond Manufacturing Index .	Crude Oil Inventories , FOMC Statement , Federal Funds Rate .	Unemployment Claims , Pending Home Sales m/m , Natural Gas Storage .	Advance GDP q/q , Advance GDP Price Index q/q , Employment Cost Index q/q , Chicago PMI , Revised UoM Consumer Sentiment , Revised UoM Inflation Expectations .
UK/EURO ZONE	German Ifo Business Climate , BBA Mortgage Approvals .	Prelim GDP q/q , Index of Services 3m/3m ,	GfK German Consumer Climate , Nationwide HPI m/m , German 10-y Bond Auction .	German Prelim CPI m/m , French Consumer Spending m/m , Spanish Flash GDP q/q , German Unemployment Change , M3 Money Supply y/y , Private Loans y/y , Italian 10-y Bond Auction .	German Retail Sales m/m , German Import Prices m/m , Spanish Flash CPI y/y , Net Lending to Individuals m/m , CPI Flash Estimate y/y , Core CPI Flash Estimate y/y , Unemployment Rate , Italian Prelim CPI m/m .
INDIA					



Narnolia Securities Ltd

124, 1st floor 7/ 1, Lords Sinha Road Kolkata 700071, Ph 033-22821251 Toll Free no : 1-800-345-4000

email: research@narnolia.com,

website : www.narnolia.com

Risk Disclosure & Disclaimer: This report/message is for the personal information of the authorized recipient and does not construe to be any investment, legal or taxation advice to you. Narnolia Securities Ltd. (Hereinafter referred as NSL) is not soliciting any action based upon it. This report/message is not for public distribution and has been furnished to you solely for your information and should not be reproduced or redistributed to any other person in any form. The report/message is based upon publicly available information, findings of our research wing "East wind" & information that we consider reliable, but we do not represent that it is accurate or complete and we do not provide any express or implied warranty of any kind, and also these are subject to change without notice. The recipients of this report should rely on their own investigations, should use their own judgment for taking any investment decisions keeping in mind that past performance is not necessarily a guide to future performance & that the the value of any investment or income are subject to market and other risks. Further it will be safe to assume that NSL and /or its Group or associate Companies, their Directors, affiliates and/or employees may have interests/ positions, financial or otherwise, individually or otherwise in the recommended/mentioned securities/mutual funds/ model funds and other investment products which may be added or disposed including & other mentioned in this report/message.