

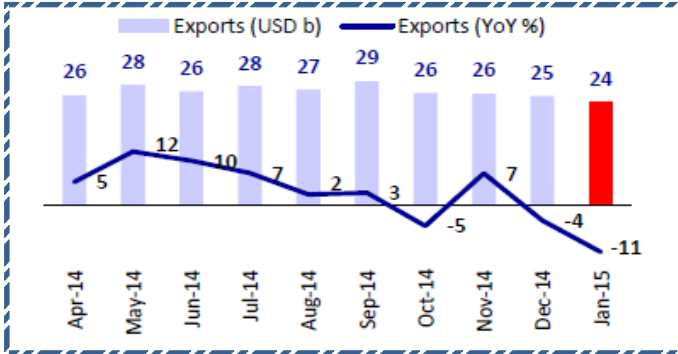
SGX NIFTY : 8771 (26 Pt Up)

Quote of the Day

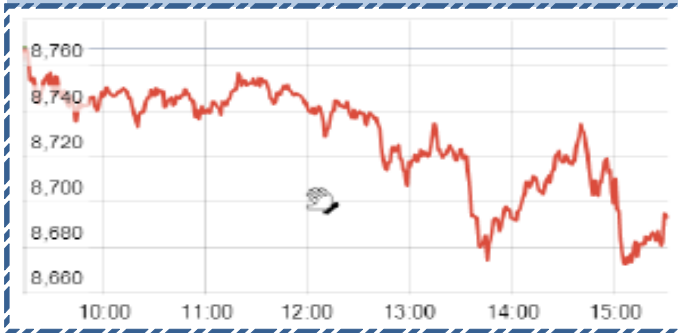
"Acquire worldly wisdom and adjust your behavior accordingly. If your new behavior gives you a little temporary unpopularity with your peer group...then to hell with them." **Charlie Munger**

Chart of the Day

Export Trend



Index Action-Nifty (26th Feb, 15)



MARKET		
Name	Value	Change
Sensex	28746.65	(261.43)
Nifty	8683.85	(83.40)
DOW	18214.42	(10.75)
NASDAQ	4987.89	20.75
CAC	4910.62	28.40
DAX	11327.19	116.62
FTSE	6949.73	14.35
NIKIE	18813.14	27.35
HANG SENG	24920.39	18.33
EW ALL SHARE	14575.09	(114.31)

INSTITUTIONAL TURNOVER

FI			
Investor	Buy(Cr.)	Sale(Cr.)	Net(Cr.)
26th Feb	8397.27	6,085.12	2312.15
Feb,15	87331.27	83,156.70	4174.57
2015	192482.48	1,77,701.67	14780.81
DII			
Investor	Buy(Cr.)	Sale(Cr.)	Net(Cr.)
26th Feb	2908.33	2,567.54	340.79
Feb,15	33831.26	30,886.27	2944.99
2015	69144.91	74,081.69	(4936.78)

COMMODITY PRICE

COMMODITY/CURRENCIES	Value	
GOLD	26222.60	↑
SILVER	36690.00	↑
CRUDEOIL	48.68	↓
COPPER	372.10	↓
NATURALGAS	169.40	↓
DOLLAR/RS.	61.75	↓
EURO/RS.	69.29	↑
POUND/RS.	95.24	↑

Index		
Contents	Page	Coverage
News	2	UPDATE
Economic Calendar	3	UPDATE

Narnolia Securities Ltd.

Markets Snapshot

Top Price Performers

Top Performers 1D	% Change	Top Performers 1W	% Change	Top Performers 1M	% Change
WESTE	18.67	RMMIL	47.33	ISFT	90.60
SUDAR	15.02	BFINVEST	38.40	IL&FSENGG	74.94
HIRECT	14.71	BILPOWER	34.69	RICOHQ	64.30
REMIMETAL	10.83	WESTE	34.17	BFINVEST	63.75
AZZMES	9.66	LOGIXMICRO	31.44	TWL	59.74

Worst Price Performers

Worst Performers 1D	% Change	Worst Performers 1W	% Change	Worst Performers 1M	% Change
BLBLIMITED	(12.02)	KGL	(19.59)	PRITHVI	(47.00)
ABGHEAVY	(9.91)	NCOPPER	(18.78)	SRSREAL	(44.81)
RMMIL	(9.81)	SHRENTH	(18.59)	FARMAXIND	(38.60)
RESTILE	(9.42)	GEINDSYS	(18.54)	MVL	(36.49)
KAVVERITEL	(9.27)	GOLDENTOBC	(17.79)	NEULANLAB	(33.77)

Top News :

• **Sintex Mgt Guideline** : Sintex Will be able to achieve 25% topline growth & 30% Growth of EBITDA Margin in FY 15 . The oversea business growth is on a organic bases at the level of 8-9% . The 50 % growth was come from two acqstion like simonin & cismaan in last two year . Simonim has contributed capacity 50 million on anually basics . & Cismaan 20-30 million on annually basic . Simonim & cismaan together get top line 17-18 million . So French business is grow up compare to the last year . The project of domestic business which is implementing that cost is Rs 1800 crore of 3000 capacity which likely to contributed 210 crore topline with full capacity utilization EBITDA margin will be 21-31 % with product orientation is 70:30 ratio of export & domestic . Product is largely export oriented . The project status is that the capacity installed 1000 spindall in April 2015 which is contribute revenue in sept qty , another 1000 spindal install in dec 2015 , last 1000 spindal install in march 2016 . In FY 15-16 , the full capacity utilization is done . 50% of FCCB out of 140 million FCCB has already converted . Every week there would be 30-35 lakhs of share converted . By the month of may entire FCCB will be convert .

• **Indian Railway Budget** : The government left passenger fares unchanged and announced rationalisation of freight rates for goods traffic . The Railways will invest Rs 8.5 lakh crore over the next 5 years. Railways is targeting operating ratio of 88.5% for FY 2016. The operating ratio is expected at 91.8% in FY 2015. The thrust of the Railways will be on resource mobilization for higher investments. For the next five years, Railways has set a goal of increase in daily passenger carrying capacity from 21 million to 30 million, increase track length by 20% from 1.14 lakh km to 1.38 lakh km and increase in annual freight carrying capacity from 1 billion to 1.5 billion tonnes. The Railways has set a goal to make it financially sustainable over the next five years . Indian Railways envisages investment of Rs 8.5 lakh crore in next five years to be mobilized from multiple sources to cater to funding i.e multilateral development banks, pension funds. Frieght rate hiked by 6.5% for Cement,Iron ore and coal .

• **Canara Bank** has considered and approved the proposal regarding raising of Capital by way of Preferential Allotment of Equity Shares in favour of Government of India amounting to Rs. 570 Crore (Rupees Five Hundred and Seventy Crore only).

• **Tata Power Company s** strategic engineering division, in consortium with Larsen & Toubro, is one of the two down-selected development agencies for Ministry Of Defence s prestigious MAKE program Battlefield Management Systems.

• **Tube Investments of India Ltd** has informed that TI Tsubamex Private Limited (TTPL), a joint venture company with Tsubamex Company Limited (Tsubamex), Japan on February 26, 2015 has become a subsidiary of the Company consequent upon the allotment of 1,75,00,000 equity shares of the face value of Rs. 10/- each in the share capital of TTPL. The Company and Tsubamex hold 75% and 25% respectively in TTPL's equity share capital.

• **Euro zone business and consumer survey index** rose to 102.1, from 101.4 in the preceding month whose figure was revised up from 101.2. Analysts had expected the euro zone business and consumer survey index to rise to 101.9 last month.

• **European Central Bank** said M3 money supply in the single currency bloc rose at annualized rate of 4.1% last month, above forecasts for a 3.7% gain. M3 money supply in the euro zone rose 3.6% in the preceding month.

• **U.K. Index of Services** rose to 0.8%, from 0.7% in the preceding month whose figure was revised down from 0.8%. Analysts had expected U.K. Index of Services to rise 0.7% last month.

Result Calendar Q3FY15

Bse Coade	Company Name	Date	Bse Coade	Company Name	Date
507525	AMRITCORP-\$	24-Feb-15	500024	ASSAMCO	27-Feb-15
500123	ELANTAS	24-Feb-15	530959	DIANATEA	27-Feb-15
509496	ITDCEM	24-Feb-15	500168	GOODYEAR	27-Feb-15
520113	VESUVIUS	24-Feb-15	500339	RAIN	27-Feb-15
500870	CASTROLIND	25-Feb-15	523888	VRWODAR	27-Feb-15
533266	TECPRO	25-Feb-15	532616	XCHANGING	27-Feb-15
517140	MOSERBAER	26-Feb-15	512299	STERLINBIO	28-Feb-15
531381	ARIHANT-\$	27-Feb-15	511626	RRFIN	14-Dec-15

Economic Calendar

	Monday 23-Feb-15	Tuesday 24-Feb-15	Wednesday 25-Feb-15	Thursday 26-Feb-15	Friday 27-Feb-15	Saturday 28-Feb-15
US	Existing Home Sales , Flash Services PMI .	CB Consumer Confidence , Richmond Manufacturing Index .	Crude Oil Inventories .	CPI m/m , Core CPI m/m ,Core Durable Goods Orders m/m,Unemployment Claims , Durable Goods Orders m/m , HPI m/m ,Natural Gas Storage .	Prelim GDP q/q , Chicago PMI , Pending Home Sales m/m , Revised UoM Consumer Sentiment .	
UK/EURO ZONE	German Ifo Business Climate , CBI Realized Sales .	EU Economic Forecasts , Final CPI y/y .	GfK German Consumer Climate ,BBA Mortgage Approvals	Nationwide HPI m/m , German Prelim CPI m/m , German Unemployment Change , M3 Money Supply y/y , Private Loans y/y, Targeted LTRO	Second Estimate GDP q/q , Prelim Business Investment q/q , Index of Services 3m/3m .	
INDIA				Railway Budget FY15-16	Economic Survey	Union Budget FY15-16



Narnolia Securities Ltd

124, 1st floor 7/ 1, Lords Sinha Road Kolkata 700071, Ph 033-22821251 Toll Free no : 1-800-345-4000

email: research@narnolia.com,

website : www.narnolia.com

Risk Disclosure & Disclaimer: This report/message is for the personal information of the authorized recipient and does not constitute to be any investment, legal or taxation advice to you. Narnolia Securities Ltd. (Hereinafter referred as NSL) is not soliciting any action based upon it. This report/message is not for public distribution and has been furnished to you solely for your information and should not be reproduced or redistributed to any other person in any form. The report/message is based upon publicly available information, findings of our research wing "East wind" & information that we consider reliable, but we do not represent that it is accurate or complete and we do not provide any express or implied warranty of any kind, and also these are subject to change without notice. The recipients of this report should rely on their own investigations, should use their own judgment for taking any investment decisions keeping in mind that past performance is not necessarily a guide to future performance & that the value of any investment or income are subject to market and other risks. Further it will be safe to assume that NSL and /or its Group or associate Companies, their Directors, affiliates and/or employees may have interests/ positions, financial or otherwise, individually or otherwise in the recommended/mentioned securities/mutual funds/ model funds and other investment products which may be added or disposed including & other mentioned in this report/message.