

SGX NIFTY : 8021 (57 Pt Down)

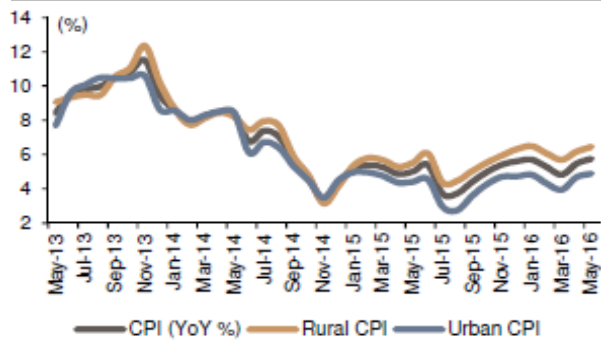
Quote of the Day

"Bargains are the holy grail of the true stockpicker. The fact that 10 to 30 percent of our net worth is lost in a market sell-off is of little consequence. We see the latest correction not as a disaster but as an opportunity to acquire more shares at low prices. This is how great fortunes are made over time."

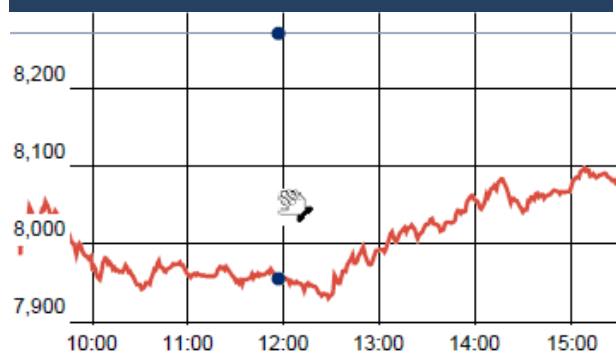
Peter Lynch

Chart of the Day

CPI Growth Trend



Index Action Nifty (24th June 16)



Index

Contents	Page	Coverage
News	2	Update
Economic Calendar	3	Update

Market

Name	Value	Change
Sensex	26,397.71	(604.51)
Nifty	8088.60	(181.85)
DOW	17,400.75	(610.32)
NASDAQ	4,707.98	(202.06)
CAC	4,106.73	(359.10)
DAX	9,557.16	(699.87)
FTSE	6,138.69	(199.41)
NIKKEI	15,199.37	247.38
HANG SENG	19,982.66	(276.67)
EW ALL SHARE	13984.65	(254.52)

Instituional Turnover

FII

Investor	Buy(Cr.)	Sale(Cr.)	Net(Cr.)
24-Jun-16	3865.55	4494.69	(629.14)
June,16	46222.95	42372.83	3850.12
2016	473804.47	468228.72	5575.75

DII

Investor	Buy(Cr.)	Sale(Cr.)	Net(Cr.)
24-Jun-16	2968.90	2853.96	114.94
June,16	15039.97	17491.95	(2451.98)
2016	195004.91	184971.63	10033.28

Commodity Price

Commodity/Currencies	Value	
GOLD	31401.00	↑
SILVER	42392.00	↑
CRUDEOIL	47.44	↑
COPPER	321.40	↓
NATURALGAS	184.70	↓
DOLLAR/RS.	67.96	↑
EURO/RS.	74.62	↓
POUND/RS.	90.61	↓

Market Snapshot

Top Price Performers

Top Performers 1D	% Change	Top Performers 1W	% Change	Top Performers 1M	% Change
ASTECC	12.26	TIMEXWATCH	39.93	SHRENUJ	133.48
SHREEKRPOL	11.11	LPDC	35.84	BILPOWER	108.00
OPTOCIRCUI	10.70	GAMMONIND	29.34	UPERGANGES	101.35
JAIBALAJI	9.64	BARTRONICS	28.91	RANASUG	89.86
MAXWELL	8.01	BILENERGY	27.85	CINEPRO	87.59

Worst Performers 1D	% Change	Worst Performers 1W	% Change	Worst Performers 1M	% Change
MANDHANA	(9.98)	MANDHANA	(43.36)	PRAKASHSTL	(58.91)
PARABDRUGS	(9.71)	RAJSREESUG	(23.50)	MANDHANA	(48.59)
USHERAGRO	(9.27)	UGARSUGAR	(21.98)	INFODRIVE	(44.12)
SUDAR	(8.97)	KCPSUGIND	(18.87)	TREEHOUSE	(40.97)
PANCHMSTEL	(8.97)	DHARSUGAR	(18.27)	RAIREKMOH	(39.12)

Top News

- **Asian Paints Ltd** is investing around Rs 4,000 crore on setting up two manufacturing plants in Karnataka and Andhra Pradesh, although it has cautioned that demand conditions in the current fiscal "still remain uncertain" on account of the global economic situation . Asian Paints chairman Ashwin Choksi said in the latest Annual Report that "the company would be investing in phases at both these facilities to enable it to service the future demand adequately

- **NHPC** is planning to set up a 600-MW solar power project at the Koyna hydel power complex in Maharashtra as part of an initiative to expand its solar portfolio. The company is already carrying out the feasibility and financial viability study for the project, wherein it plans to set up floating solar panels with pumped storage system,

- **ARSS Infrastructure Projects Ltd** has informed that a work order amounting to Rs. 44.04 Crores namely "Jagdapur -Koraput Doubling Project- Execution of Earthwork in formation, Minor bridges, Protection works and other allied works from Km. 263.300 to Km.223.500 of Kotpar Road (Excluding) - Charamula kusumi (Including) - Khadapa (Including) - Dhanapur (Including) - Jeypore (Including) - Chatariput (Including) section in connection with KK line doubling of WAT Division, East Coast Railway" is awarded by East Cost Railway on June 23, 2016, in favour of one of our Joint Venture (JV)

- **Indiabulls Housing Finance Ltd** has informed that the Company proposes to issue 30,000 Unsecured Non-Convertible Redeemable Debentures (Tier II) in the nature of Subordinated Debt with a face value of Rs. 1 lakh each aggregating to Rs. 300 Crore on Private Placement basis

- **Axis Bank** has sought approval of shareholders to raise Rs 35,000 crore through multiple instruments including green bonds and from overseas markets. The bank has sought shareholders' nod through a special resolution to raise these funds.

- **Reliance Power** is looking to secure a total of Rs 714 crore as bank guarantees and compensation from 18 procurers of the electricity project. Of this, Rs 600 crore will be in the form of bank guarantees the procurers had offered to buy electricity and another Rs 114 crore as compensation for various expenses incurred

- **Britain's decision** to leave the European Union will impact IT sector, according to analysts. The currency volatility — fluctuation of pound — will make existing contracts between unviable unless they are renegotiated, says NASSCOM President R Chandrashekar. The pound fell to its lowest since 1985 as the referendum results came in on Friday and such a sharp decline can not be easily covered by IT companies, he adding that the hedging done by companies may not be enough to protect IT companies.

- **Brexit:** EU spells out procedure for UK to leave . The European Union has clarified the way the UK can kickstart formal negotiations to exit the bloc

- **U.S. consumer sentiment** fell to a seasonally adjusted 93.5, from 94.3 in the preceding month. Analysts had expected UoM consumer sentiment to fall to 94.0 last month.

- **Mexican Retail Sales** rose to a seasonally adjusted 10.6%, from 6.4% in the preceding month. Analysts had expected Mexican Retail Sales to rise to 7.5% last month.

- **U.S. durable goods orders** fell to -2.2%, from 3.3% in the preceding month whose figure was revised down from 3.4%. Analysts had expected durable goods orders to fall -0.5% last month.

- **U.S. BAA mortgage approvals** rose to a seasonally adjusted 42.2K, from 40.0K in the preceding month whose figure was revised down from 40.1K.

- **Japan's CSPI** fell to a seasonally adjusted annual rate of 0.2%, from 0.3% in the preceding month whose figure was revised up from 0.2%.

Economic Calendar

Country	Monday 27th June 16	Tuesday 28th June 16	Wednesday 29th June 16	Thursday 30th June 16	Friday 1st July 16
US	Goods Trade Balance , Flash Services PMI.	Final GDP q/q , CB Consumer Confidence ,S&P/CS Composite-20 HPI y/y.	Core PCE Price Index m/m , Personal Spending m/m , Crude Oil Inventories.	Unemployment Claims , Chicago PMI , Natural Gas Storage.	ISM Manufacturing PMI , Construction Spending m/m , ISM Manufacturing Prices .
UK/EURO ZONE	M3 Money Supply y/y , ECB President Draghi Speaks	ECB President Draghi Speaks , CBI Realized Sales , German Import Prices m/m	German Prelim CPI m/m , Spanish Flash CPI y/y , Net Lending to Individuals m/m .	German Retail Sales m/m , German Unemployment Change , Current Account , Final GDP q/q.	Spanish Manufacturing PMI , Manufacturing PMI ,
INDIA					



(Regn. No. : INP 000004011)

Narnolia Securities Ltd.

Narnolia Research Lab

Stellar IT Park | 5th Floor | Office Space No. 6 | Tower-IIInd Plot
No. C-25 | Sector-62 | Noida | Ph : 0120-4215110

Narnolia Securities Ltd.

201 | 2nd Floor | Marble Arch Building | 236B -AJC Bose Road Kolkata-
700 020 Ph : 033-40501500
Email : narnolia@narnolia.com website :www.narnolia.com