

SGX NIFTY : 7858 ( 73 Pt Up )

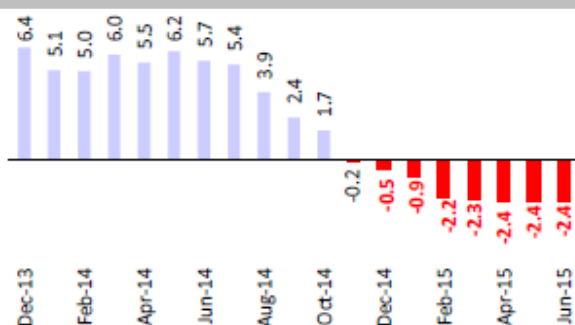
**Quote of the Day**

"An argument is made that there are just too many question marks about the near future; wouldn't it be better to wait until things clear up a bit?...face up to two unpleasant facts: The future is never clear [and] you pay a very high price for a cheery consensus. Uncertainty actually is the friend of the buyer of long term values."

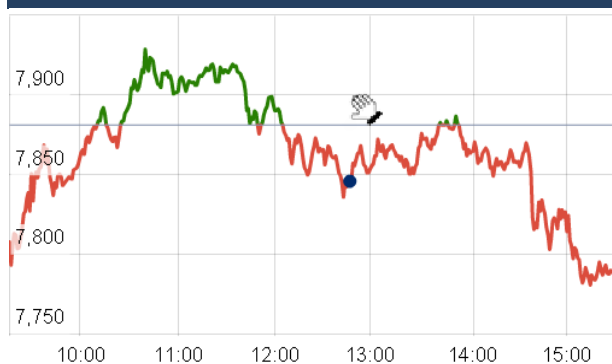
Warren Buffett

**Chart of the Day**

WPI Trend



**Index Action Nifty ( 26th Aug 15 )**



**Index**

Contents	Page	Coverage
News	2	Update
Economic Calendar	3	Update

**Market**

Name	Value	Change
Sensex	25,714.66	(317.22)
Nifty	7791.85	(88.85)
DOW	16,285.51	619.57
NASDAQ	4,697.54	191.06
CAC	4,501.05	(63.81)
DAX	9,997.43	(130.49)
FTSE	5,979.20	(102.14)
NIKKEI	18,763.41	386.58
HANG SENG	21,587.04	506.06
EW ALL SHARE	13498.6	(83.69)

**Instituional Turnover**

FII

Investor	Buy(Cr.)	Sale(Cr.)	Net(Cr.)
26th Aug,15	5050.82	7396.59	(2345.77)
Aug,15	37316.55	39616.51	(2299.96)
2015	758808.10	738956.85	19851.25

DII

Investor	Buy(Cr.)	Sale(Cr.)	Net(Cr.)
26th Aug,15	3358.28	1477.20	1881.08
Aug,15	15792.35	14354.72	1437.63
2015	292580.59	265440.42	27140.17

**Commodity Price**

Commodity/Currencies	Value	
GOLD	26420.00	↓
SILVER	33362.00	↓
CRUDEOIL	39.39	↓
COPPER	328.60	↓
NATURALGAS	179.70	↑
DOLLAR/RS.	66.14	↑
EURO/RS.	74.86	↑
POUND/RS.	102.45	↑

## Market Snapshot

### Top Price Performers

Top Performers 1D	% Change	Top Performers 1W	% Change	Top Performers 1M	% Change
ORISSASP	20.00	ORISSASP	64.68	SHRENUJ	78.50
NTCIND	19.92	SHRGLTR	59.91	SHRGLTR	59.22
PARACABLES	17.28	ENERGYDEV	17.09	JUBLINDS	59.22
SHRGLTR	14.79	DELTACORP	14.18	ENERGYDEV	58.44
ASIANHOTNR	13.35	NTCIND	12.27	ORISSASP	46.54

### Worst Price Performers

Worst Performers 1D	% Change	Worst Performers 1W	% Change	Worst Performers 1M	% Change
RADHEDE	(18.77)	AMTEKAUTO	(43.65)	AMTEKAUTO	(68.83)
SOUISPAT	(14.29)	CENTRALBK	(39.79)	AMTEKINDIA	(62.12)
CALSREF	(12.50)	TRF	(35.83)	JYOTISTRUC	(56.04)
STEERINTER	(11.07)	VAKRANSOFT	(35.09)	TRF	(56.03)
GEMINI	(10.00)	SURANACORP	(32.36)	AHMEDFORGE	(53.21)

## Top News

- Apollo Tyres** said it has closed a 300 million euro financing for its upcoming manufacturing plant in Hungary. The company has successfully closed a 300 million euro financing for its greenfield plant in Hungary. An international consortium of banks comprising ABN AMRO Bank NV, Magyar Export-Import Bank, Raiffeisen Bank, Standard Chartered Bank and UniCredit Bank Hungary, supported the company and provided the debt financing
- Oil and Natural Gas Corp (ONGC)** has submitted to oil regulator DGH a draft field development plan (FDP) for beginning oil and gas production from its KG-basin D5 block by 2018-19. ONGC board earlier this month approved submission of the draft FDP for one set of oil and gas discoveries made in the eastern offshore Block KG-DWN-98/2 or KG-D5, which sits next to Reliance Industries' flagging KG-D6 area.
- Federal Bank** tied up with Atul Auto (AAL) for a dealer financing arrangement. "Federal Bank has entered into a tie-up arrangement with Atul Auto (AAL), a Rajkot-based leading manufacturer of 3-Wheeler commercial and passenger vehicles for a dealer financing arrangement
- Thomas Cook** has received a reprieve from the Competition Appellate Tribunal (Compat). CCI had imposed this penalty after Thomas Cook bought a 9.93 percent stake in Chennai-based Sterling Holidays from the open market just days before seeking the fair trade watchdog's approval for Rs 870-crore merger
- IL&FS Financial Services** has acquired 17.25 percent stake in Sagar Cements following acquisition of 30 lakh pledged shares of the cement company. Sagar Cements said IL&FS Financial Services acquired 30 lakh pledged shares, representing 17.25 percent of total shareholding of the company
- Cairn India** is set to expand its crude oil and natural gas carrying capacity by laying a new gas pipeline from its Barmer (Rajasthan) field with an investment outlay of Rs 1,400 crore. crude oil output would be expanded from 200,000 bopd (barrels of oil per day) to 300,000 bopd and natural gas carrying capacity from 6.3 mmscfd (million standard cubic feet per day) to 40 mmscfd.
- Fund Action** : Federal Bank : -Morgan Stanley Mauritius sold 86.1 lk shares @ `60.28/sh  
West Life Development  
-SBI Magnum Balanced & Global Fund bought 21.6 Lk Shares @ `260/sh
- Andhra Bank** said LIC has acquired an additional 2.19 percent stake in the bank through open market operations during 2011 to 2015.
- Jet Airways** has further expanded its code share agreement with South African flag carrier South African Airways (SAA), providing enhanced and seamless air connectivity between the two countries via the airline's Abu Dhabi overseas hub.
- U.S. Commerce Department** said that total durable goods orders, which include transportation items, increased by a seasonally adjusted 2.0% last month, compared to expectations for a decline of 0.4%. Orders for durable goods in June were revised to a gain of 4.1% from a previously reported increase of 3.4%.
- Singaporean Industrial Production** fell to an annual rate of -6.1%, from -4.0% in the preceding month whose figure was revised up from -4.4%. Analysts had expected Singaporean Industrial Production to rise to -3.3% last month.
- Australian construction work** done rose to a seasonally adjusted 1.6%, from -0.8% in the preceding quarter whose figure was revised up from -2.4%. Analysts had expected Australian construction work done to rise to -1.5% in the last quarter
- Polish Unemployment Rate** fell to a seasonally adjusted 10.1%, from 10.3% in the preceding month. Analysts had expected Polish Unemployment Rate to fall to 10.1% last month.
- Statistisches Bundesamt Deutschland** said that **German GDP** rose to a seasonally adjusted 0.4%, from 0.4% in the preceding quarter. Analysts had expected German GDP to rise 0.4% in the last quarter.

### Economic Calendar

Country	Monday 24th Aug 15	Tuesday 25th Aug 15	Wednesday 26th Aug 15	Thursday 27th Aug 15	Friday 28th Aug 15
US		CB Consumer Confidence , New Home Sales , S&P/CS Composite-20 HPI y/y , HPI m/m .	Core Durable Goods Orders m/m ,Durable Goods Orders m/m , Crude Oil Inventories .	Prelim GDP q/q , Unemployment Claims , Prelim GDP Price Index q/q , Pending Home Sales m/m , Natural Gas Storage .	Goods Trade Balance , Core PCE Price Index m/m , Personal Spending m/m , Personal Income m/m , Revised UoM Consumer Sentiment , Revised UoM Inflation Expectations .
UK/EURO ZONE	German Ifo Business Climate	BBA Mortgage Approvals , Belgian NBB Business Climate , German Final GDP q/q , German Ifo Business Climate .	CBI Realized Sales , Nationwide HPI m/m , German 30-y Bond Auction .	German Prelim CPI m/m ,Employment Level , M3 Money Supply y/y , Private Loans y/y , Second Estimate GDP q/q , Prelim Business Investment q/q , Index of Services 3m/3m , Italian 10-y Bond Auction .	Spanish Flash CPI y/y ,German Import Prices m/m , Italian Monthly Unemployment Rate , Italian Quarterly Unemployment Rate , Italian Prelim CPI m/m
INDIA					

## Narnolia Securities Ltd.

### Narnolia Research Lab

Stellar IT Park | 5th Floor | Office Space No. 6 | Tower-IIInd Plot No. C-25 | Sector-62 | Noida |  
Ph : 0120-4215110

### Central Strategy Desk - Kolkata

124 | 1st Floor | 7/1 Lords Sinha Road | Kolkata - 71  
Ph : 033-22821500 | M : 93347 14418, 98302 69810