

SGX NIFTY : 7689 (4 Pt Up)

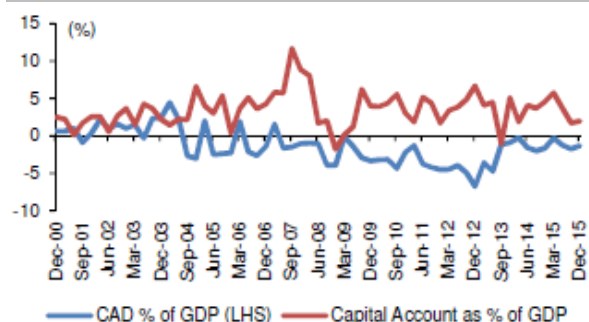
Quote of the Day

"We've long felt that the only value of stock forecasters is to make fortune tellers look good. Even now, Charlie (Munger) and I continue to believe that short-term market forecasts are poison and should be kept locked up in a safe place, away from children and also from grown-ups who behave in the market like children."

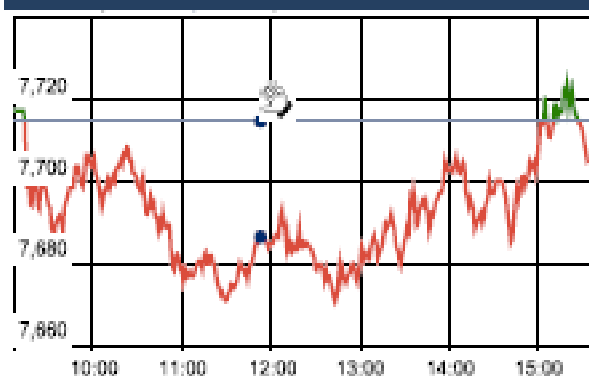
Warren Buffett

Chart of the Day

Current Account % of GDP



Index Action Nifty (23th Mar 16)



Index

Contents	Page	Coverage
News	2	Update
Economic Calendar	3	Update

Market

Name	Value	Change
Sensex	25,337.56	7.07
Nifty	7716.50	1.60
DOW	17,602.30	120.81
NASDAQ	4,773.50	4.64
CAC	4,329.68	(94.30)
DAX	9,851.35	(171.48)
FTSE	6,108.48	(92.83)
NIKKEI	17,140.73	137.98
HANG SENG	20,345.61	(269.62)
EW ALL SHARE	13259.75	15.91

Instituional Turnover

FII

Investor	Buy(Cr.)	Sale(Cr.)	Net(Cr.)
23-Mar-16	3923.97	2947.06	976.91
Mar,16	80981.74	64835.71	16146.03
2016	224119.20	234185.37	(10066.17)

DII

Investor	Buy(Cr.)	Sale(Cr.)	Net(Cr.)
23-Mar-16	1596.53	2619.11	(1022.58)
Mar,16	22952.83	33506.13	(10553.30)
2016	104867.80	90970.33	13897.47

Commodity Price

Commodity/Currencies	Value	
GOLD	28599.00	↓
SILVER	36669.00	↓
CRUDEOIL	41.20	↑
COPPER	332.50	↓
NATURALGAS	127.00	↓
DOLLAR/RS.	66.64	↓
EURO/RS.	74.54	↓
POUND/RS.	94.34	↓

Market Snapshot

Top Price Performers

Top Performers 1D	% Change	Top Performers 1W	% Change	Top Performers 1M	% Change
ZFSTEERING	20.00	WEBELSOLAR	53.39	DWARKESH	83.96
NAVINFLUOR	19.99	THIRUSUGAR	35.94	RAJSREESUG	76.21
AXIS-IT&T	19.79	SANWARIA	35.06	PRAKASHCON	76.07
SUPREMEINF	18.16	ABGSHIP	33.55	PARRYSUGAR	72.44
HOCL	17.05	DHARSUGAR	27.39	OUDHSUG	72.27

Worst Performers 1D	% Change	Worst Performers 1W	% Change	Worst Performers 1M	% Change
CALSREF	(14.29)	RUSHIL	(20.67)	SHRENUJ	(42.27)
REMIMETAL	(12.73)	RAINBOWPAP	(20.28)	RUSHIL	(39.60)
SHREERAM	(10.64)	BILPOWER	(17.80)	SURANACORP	(31.95)
RAINBOWPAP	(9.52)	SHRENUJ	(15.12)	INDINFO	(28.57)
USHDEVINT	(9.22)	FARMAXIND	(15.00)	TRICOM	(28.00)

Top News

- **Two GMR group firms** have signed a share purchase agreement with joint venture partners to divest a 51 percent stake in GMR OSE Hungund Hospet Highways Pvt. Ltd (GOHHHPL) . GOHHHPL operates over 99 km of the National Highway-13 in Karnataka. GMR OSE Consortium won the project in 2010 on design, build, finance, operate and transfer basis. The joint venture partners have bought 14.99 percent stake in the project from the group in the first tranche of sale. The second tranche will be completed post approvals from the National Highways Authority of India, lenders of GOHHHPL, and other closing conditions customary to such transactions

• Sanofi India says

-Vijay Mallya ceases to be a director & chairman of the board of directors

-Vijay Mallya not seeking re-election as director

-Vijay Mallya says will retire from chairmanship of Sanofi India

- **NTPC** has commissioned the Unit - 4 of 195 MW of Muzaffarpur Thermal Power Station of Kanti Bijlee Utpadan Nigam (A subsidiary Company of NTPC) has been commissioned on March 24, 2016. With this, the total installed capacity of Muzzafarpur Thermal Power Station has become 610 MW and the total installed capacity of NTPC group has become 45993 MW.

- **IL&FS Engineering and Construction Company Ltd and Unitech Power Transmission Ltd JV** has received letter of award for Rs 153.99 crore turnkey works of 765 kV transmission line in Gujarat from PGCIL . The scope of work includes supply contract for tower package for 765 kV Bhuj-Banaskanta Transmission Line associated with green energy corridor.

• Reliance Communications

-Extends exclusive discussions for combination of wireless business with Aircel

-Extends exclusivity period with Aircel by 60 days to May 22

-Discussions with Aircel are non-binding in nature

- **Ajanta Pharma** announced the launch of Levetiracetam Immediate-Release Tablets (250 mg, 500 mg, 750 mg and 1000 mg) in the US market through its wholly owned subsidiary Anjanta Pharma USA Inc. Levetiracetam cures epileptic neurological disorder like numbness, blindness, paralysis or fits and is bio-equivalent generic version of Kepra.

- **Monnet Ispat and Energy Ltd (MIEL)** said its shareholders have approved the proposal to sell the company's stake in a power subsidiary firm. MPCL, in which MIEL has 87.5 per cent stake, is setting up a thermal power plant of 1,050 MW capacity in Angul (Odisha).

- **U.K. Office for National Statistics (ONS)** said the rate of consumer price inflation rose by a seasonally adjusted 0.3% last month, below forecasts for an increase of 0.4% and unchanged from 0.3% in January.

- **German research institute Ifo** said its Business Climate Index rose to a seasonally adjusted 106.7 this month from a reading of 105.7 in February, above forecasts for 106.0.

- **Flash Germany Composite Output Index**, which measures the combined output of both the manufacturing and service sectors held steady 54.1 in March, unchanged from the prior month and above expectations for 53.9.

- **U.S. consumer sentiment** fell to a seasonally adjusted 90.0, from 91.7 in the preceding month. Analysts had expected UoM consumer sentiment to rise to 92.2 last month.

- **Canadian core CPI** rose to a seasonally adjusted 0.5%, from 0.3% in the preceding month. Analysts had expected Canadian core CPI to rise 0.5% last month.

- **Canadian consumer price inflation** rose to 0.2% on a monthly basis and before seasonal adjustment, from 0.2% in the preceding month. Analysts had expected Canadian consumer price inflation to rise 0.4% last month.

Economic Calendar

Country	Monday 28th Mar 16	Tuesday 29th Mar 16	Wednesday 30th Mar 16	Thursday 31th Mar 16	Friday 1th April 16
US	S&P/CS Composite-20 HPI y/y , CB Consumer Confidence , Richmond Manufacturing Index	ADP Non-Farm Employment Change , Crude Oil Inventories .	Unemployment Claims , Chicago PMI, Natural Gas Storage .	Average Hourly Earnings m/m , Non-Farm Employment Change , Unemployment Rate, ISM Manufacturing PMI , Revised UoM Consumer Sentiment .	Labor Market Conditions Index m/m .
UK/EURO ZONE	German Retail Sales m/m , Spanish Flash CPI y/y , German Unemployment Change , M3 Money Supply y/y ,	German Prelim CPI m/m , French Consumer Spending m/m , Italian Monthly Unemployment Rate .	Current Account , Final GDP q/q , Net Lending to Individuals m/m , CPI Flash Estimate y/y , Core CPI Flash Estimate y/y , ECB Monetary Policy Meeting Accounts .	Manufacturing PMI , Unemployment Rate , Italian Manufacturing PMI , French Final Manufacturing PMI , German Final Manufacturing PMI .	Construction PMI , Spanish Unemployment Change , PPI m/m .
INDIA					



(Regn. No. : INP 000004011)

Narnolia Securities Ltd.

Narnolia Research Lab

Stellar IT Park | 5th Floor | Office Space No. 6 | Tower-II/nd Plot No. C-25 | Sector-62 | Noida | Ph : 0120-4215110

Central Strategy Desk - Kolkata

124 | 1st Floor | 7/1 Lords Sinha Road | Kolkata - 71
Ph : 033-22821500 | M : 93347 14418, 98302 69810