

SGX NIFTY : 7988 (1.50 Pt Down)

Quote of the Day

"Basically, price fluctuations have only one significant meaning for the true investor. They provide him with an opportunity to buy wisely when prices fall sharply and to sell wisely when they advance a great deal. At other times he will do better if he forgets about the stock market and pays attention to his dividend returns and to the operating results of his companies."

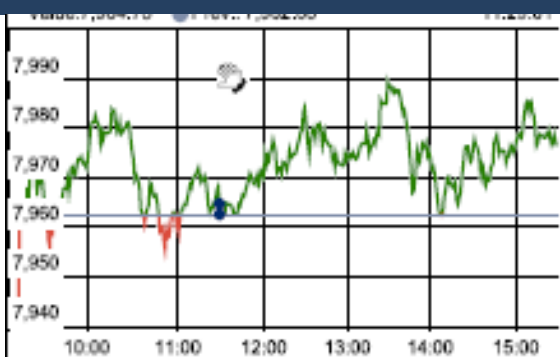
Benjamin Graham

Chart of the Day

GDP Trend



Index Action Nifty (26th Apr 16)



Index

Contents	Page	Coverage
News	2	Update
Economic Calendar	3	Update

Market

Name	Value	Change
Sensex	26,064.12	56.82
Nifty	7979.90	17.25
DOW	18,041.35	51.23
NASDAQ	4,863.14	(25.14)
CAC	4,559.40	26.22
DAX	10,299.83	40.24
FTSE	6,319.91	35.39
NIKKEI	16,880.95	(409.54)
HANG SENG	21,477.39	115.79
EW ALL SHARE	13805.05	46.92

Institutional Turnover

FII

Investor	Buy(Cr.)	Sale(Cr.)	Net(Cr.)
26-Apr-16	4412.63	4001.63	411.00
Apr,16	6673.63	6222.80	450.83
2016	257814.04	259373.90	(1559.86)

DII

Investor	Buy(Cr.)	Sale(Cr.)	Net(Cr.)
26-Apr-16	1656.53	1951.60	(295.07)
Apr,16	2471.30	3324.95	(853.65)
2016	115962.42	109257.20	6705.22

Commodity Price

Commodity/Currencies	Value	
GOLD	29383.00	↑
SILVER	40565.00	↑
CRUDEOIL	45.24	↑
COPPER	326.30	↓
NATURALGAS	143.70	↑
DOLLAR/RS.	66.49	↑
EURO/RS.	75.45	↑
POUND/RS.	96.64	↑

Market Snapshot

Top Price Performers

Top Performers 1D	% Change	Top Performers 1W	% Change	Top Performers 1M	% Change
BIRLACOT	25.00	DIAPOWER	42.23	KIRIINDUS	105.95
JINDRILL	19.94	RAMAPHOSP	33.59	MEGASOFT	89.40
DIAPOWER	19.59	PANCHMSTEL	28.15	KAKATCEM	77.77
CALSREF	16.67	ALCHEM	27.47	UTTAMSUGAR	74.92
DOLPHINOFF	13.83	AMTEKINDIA	27.04	OISL	71.45

Worst Performers 1D	% Change	Worst Performers 1W	% Change	Worst Performers 1M	% Change
SHRENUJ	(9.87)	RAINBOWPAP	(21.70)	VIVIMEDLAB	(77.81)
ALCHEM	(9.26)	SHRENUJ	(20.70)	RAINBOWPAP	(54.77)
DECNGOLD	(8.41)	REMIMETAL	(20.51)	SHRENUJ	(35.23)
EUROCERA	(8.39)	GODFRYPHP	(19.69)	RICOHQ	(30.78)
HINDNATGLS	(7.57)	TIL	(19.40)	IVRCLINFRA	(26.55)

Top News

- **Biocon Mgt Guideline** : Syngene International had delivered good business . Syngene is Biocon's research services subsidiary. The contract research and manufacturing organisation has invested robustly in some of its anchor client businesses. Its clinical business has also begun to gain traction . Japan had agreed to market and sell Biocon's biosimilar insulin Glargine from the first half of FY17. Shaw said this move will help it foray into large emerging markets like South Africa, Brazil, Russia and Turkey.

Company expects these markets to give Biocon sales upwards of USD 100 million from FY18.

Biocon's R&D team is working on the second phase of the development of oral insulin (IN-105), and Shaw hopes that it becomes an approved

- **Axis Bank Mgt Guideline** : Axis Bank has prepared a "watch list" of about Rs 22,000 crore worth of loans, or 4 percent of its total assets, out of which 60 percent might go bad in the next couple of quarters the bank has assessed the status of the corporates, their current payment track record, their fundamentals, and the probability of the slippages, before taking a call on making the watch list.

Company expects the trend in slippages to be the same for FY17, where retail banking will remain benign in term of slippages and credit environment.

The small and medium enterprise business will also continue to be fairly steady for the bank.

- **Raymond** has managed to perform despite a subdued consumer sentiment . Raymond had taken a price hike in the quarter gone-by. Raymond is in an investment phase, said Bahl, adding that returns of this will be visible in the next two-three years. The company's investment in Park Avenue has worked well and is reaping benefits. Company expects growth momentum to continue in the shirting and apparel business.

Suzlon

Board approves merger of SE Blades, SE Electricals and Suzlon Wind (all 100 percent subsidiaries with the co)

Board approves de-merger of Suzlon Structures (100 percent subsidiary) into the co

- **Great Eastern Shipping Company Ltd** has entered into an agreement to cancel the new building Kamsarmax which was scheduled for delivery in FY 18 (contract signed in FY 14). Simultaneously, the Company has contracted for purchase of two newbuilding resale Kamsarmaxes being built at the same shipyard, due to be delivered in Q2 FY 17. The transactions collectively are value accretive.

- **U.S. new home sales** decreased 1.5 percent to a seasonally adjusted annual rate of 511,000 units. February's sales pace was revised up to 519,000 units from the previously reported 512,000 units.

- **Canadian consumer price inflation rose** to 0.6% on a monthly basis and before seasonal adjustment, from 0.2% in the preceding month. Analysts had expected Canadian consumer price inflation to rise 0.6% last month.

- **Australian Import Price Index fell** to a seasonally adjusted -3.0%, from -0.3% in the preceding month. Analysts had expected Australian Import Price Index to fall -0.9% last month.

- **Japan's industrial output** rose 3.6 percent in March, rebounding from a big drop logged in the prior month . The result compared with the median estimate of a 2.9 percent increase in a Reuters poll of economists.

- **Japanese Household Spending** fell to a seasonally adjusted -5.3%, from 1.2% in the preceding month. Analysts had expected Japanese Household Spending to fall to -4.2% last month.

- **Japan's National Core CPI fell** to a seasonally adjusted -0.3%, from 0.0% in the preceding month. Analysts had expected Japan's National Core CPI to fall to -0.2% last month.

- **The percentage of the total work force that** is unemployed and actively seeking employment during the previous month fell to a seasonally adjusted 3.2%, from 3.3% in the preceding month.

Result Calendar Q4FY16

BSE Code	Company Name	Date	BSE Code	Company Name	Date
500410	ACC	28-Apr-16	539448	INDIGO	29-Apr-16
500425	AMBUJACEM	28-Apr-16	500245	KIRLFER	29-Apr-16
507525	AMRITCORP	28-Apr-16	523457	LINDEINDIA	29-Apr-16
512642	ARTIBIOIN	28-Apr-16	531642	MARICO	29-Apr-16
520119	ASAL	28-Apr-16	533273	OBEROIRLTY	29-Apr-16
511196	CANFINHOME	28-Apr-16	500329	PENTAGRAPH	29-Apr-16
500096	DABUR	28-Apr-16	524632	RELISH	29-Apr-16
512439	ESQRMON	28-Apr-16	532983	RPGLIFE	29-Apr-16
500135	ESSELPRO	28-Apr-16	500674	SANOFI	29-Apr-16
532482	GRANULES	28-Apr-16	501061	SBBJ	29-Apr-16
500160	GTL	28-Apr-16	505827	SNL	29-Apr-16
531410	GUJFOIL	28-Apr-16	511218	SRTRANSFIN	29-Apr-16
500185	HCC	28-Apr-16	512640	STOCKNET	29-Apr-16
532281	HCLTECH	28-Apr-16	531003	SWRNASE	29-Apr-16
504731	IBRIGST	28-Apr-16	504966	TINPLATE	29-Apr-16
532822	IDEA	28-Apr-16	500429	UNIPHOS	29-Apr-16
500233	KAJARIACER	28-Apr-16	512070	UPL	29-Apr-16
532889	KPRMILL	28-Apr-16	534392	VSSL	29-Apr-16
500307	NIRLON	28-Apr-16	526125	ARHNTTO	30-Apr-16
538771	PINCON	28-Apr-16	513729	AROGRANITE	30-Apr-16
531265	PROGRESV	28-Apr-16	506194	ASL	30-Apr-16
507300	RAVALSUGAR	28-Apr-16	530765	DEVKI	30-Apr-16
531169	SKPSEC	28-Apr-16	531155	EPSOMPRO	30-Apr-16
590046	SMRUTHI	28-Apr-16	500469	FEDERALBNK	30-Apr-16
533121	SQSBFSI	28-Apr-16	524226	GAEL	30-Apr-16
531359	SRAMSET	28-Apr-16	590025	GINNIFILA	30-Apr-16
513262	SSWL	28-Apr-16	532414	IKFTECH	30-Apr-16
500408	TATAELXSI	28-Apr-16	500250	LGBBROSLTD	30-Apr-16
513434	TATAMETALI	28-Apr-16	533007	LGBFORGE	30-Apr-16
501242	TCIFINANCE	28-Apr-16	530243	MANGASOF	30-Apr-16
500295	VEDL	28-Apr-16	532892	MOTILALOFS	30-Apr-16
505412	WENDT	28-Apr-16	516062	NATPLY	30-Apr-16
511246	WHITELIO	28-Apr-16	531494	NAVBLDR	30-Apr-16
530117	ADIFINCHM	29-Apr-16	532504	NAVINFLUOR	30-Apr-16
532331	AJANTPHARM	29-Apr-16	500452	NEPCAGRO	30-Apr-16
524634	ALUFLUOR	29-Apr-16	500301	NEPCMICON	30-Apr-16
532493	ASTRAMICRO	29-Apr-16	531077	NEPCPAPER	30-Apr-16
500027	ATUL	29-Apr-16	521192	NEPCTEX	30-Apr-16
511243	CHOLAFIN	29-Apr-16	539015	ORTEL	30-Apr-16
512127	ETPCORP	29-Apr-16	526349	PARTIND	30-Apr-16
508906	EVERESTIND	29-Apr-16	532735	RSYSTEMINT	30-Apr-16
500033	FORCEMOT	29-Apr-16	513709	SHILGRAVQ	30-Apr-16
511676	GICHSGFIN	29-Apr-16	514454	SOUTLAT	30-Apr-16
502856	GNDHISP	29-Apr-16	530565	SSLFINANCE	30-Apr-16
519126	HNDFDS	29-Apr-16	524204	TEEAI	30-Apr-16
532174	ICICIBANK	29-Apr-16	523868	UBEINDL	30-Apr-16
532659	IDFC	29-Apr-16	526957	UVBOARDS	30-Apr-16

534741	VIRTUALG	30-Apr-16	500280	CENTENKA	4-May-16
531147	ALICON	2-May-16	523100	COSMOFE	4-May-16
533029	ALKALI	2-May-16	511072	DHFL	4-May-16
538465	AMARSEC	2-May-16	532129	HEXAWARE	4-May-16
533163	ARSSINFRA	2-May-16	509895	HINDMILL	4-May-16
519600	CCL	2-May-16	539337	HKT	4-May-16
532456	COMPUAGE	2-May-16	524648	INDOAMIN	4-May-16
533896	FERVENTSYN	2-May-16	504786	INVPRECQ	4-May-16
500010	HDFC	2-May-16	502157	MANGLMCEM	4-May-16
524164	IOLCP	2-May-16	504112	NELCO	4-May-16
533519	L&TFH	2-May-16	531209	NUCLEUS	4-May-16
507912	LKPFIN	2-May-16	535754	ORIENTCEM	4-May-16
500264	MAFATIND	2-May-16	533228	SKSMICRO	4-May-16
500206	MARGOFIN	2-May-16	532513	TVSELECT	4-May-16
500162	PARRYSUGAR	2-May-16	520113	VESUVIUS	4-May-16
531172	PRANAVSP	2-May-16	532953	VGUARD	4-May-16
534369	TBZ	2-May-16	524348	AARTIDRUGS	5-May-16
530477	VIKRAMTH	2-May-16	534612	AMTL	5-May-16
516072	VISHNU	2-May-16	500870	CASTROLIND	5-May-16
532921	ADANIPOINTS	3-May-16	505200	EICHERMOT	5-May-16
533096	ADANIPOWER	3-May-16	531162	EMAMILTD	5-May-16
522275	ALSTOMT&D	3-May-16	500620	GESHIP	5-May-16
500042	BASF	3-May-16	507815	GILLETTE	5-May-16
509438	BENARAS	3-May-16	533150	GODREJPROP	5-May-16
500040	CENTURYTEX	3-May-16	509675	HIL	5-May-16
532443	CERA	3-May-16	532636	IIFL	5-May-16
531199	GLANCE	3-May-16	511473	INDBANK	5-May-16
532424	GODREJCP	3-May-16	523465	INDBNK	5-May-16
517077	INDAGIV	3-May-16	500211	INSILCO	5-May-16
538835	INTELLECT	3-May-16	534091	MCX	5-May-16
511208	IVC	3-May-16	532529	NDTV	5-May-16
509715	JAYSHRETEA	3-May-16	500730	NOCIL	5-May-16
500290	MRF	3-May-16	500459	PGHH	5-May-16
532698	NITINSPIN	3-May-16	532419	SMARTLINK	5-May-16
532481	NOIDATOLL	3-May-16	504959	STOVACQ	5-May-16
532690	RAMSARUP	3-May-16	533200	TALWALKARS	5-May-16
534618	SAL	3-May-16	512297	WHELTEX	5-May-16
539252	SCFL	3-May-16	590013	XPROINDIA	5-May-16
536666	SFCL	3-May-16	524208	AARTIIND	6-May-16
532638	SHOPERSTOP	3-May-16	508933	AYMSYNTEX	6-May-16
520086	SICAL	3-May-16	522004	BATLIBOI	6-May-16
531863	SIGRUN	3-May-16	530803	BHAGIL	6-May-16
504973	TUBEINVEST	3-May-16	532974	BIRLAMONEY	6-May-16
532343	TVSMOTOR	3-May-16	517477	ELNET	6-May-16
500254	UTTAMVALUE	3-May-16	539844	EQUITAS	6-May-16
532268	ACCELYA	4-May-16	531508	EVEREADY	6-May-16
512599	ADANIENT	4-May-16	501455	GREAVESCOT	6-May-16
590122	ASHIKACR	4-May-16	532642	JSWHL	6-May-16
513375	CARBORUNIV	4-May-16	505890	KENNAMET	6-May-16

502420	ORIENTPPR	6-May-16	526483	EDJEXEL	13-May-16
500680	PFIZER	6-May-16	524378	JMDEPACKR	13-May-16
500339	RAIN	6-May-16	523405	JMFINANCIL	13-May-16
500550	SIEMENS	6-May-16	526947	LAOPALA	13-May-16
500114	TITAN	6-May-16	532340	OMNIAX	13-May-16
532300	WOCKPHARMA	6-May-16	506590	PHILPCARB	13-May-16
512245	ZNIVITRD	6-May-16	520057	SONASTEER	13-May-16
500300	GRASIM	7-May-16	533170	TAMBOLI	13-May-16
524330	JAYAGROGN	7-May-16	532410	TRANSCOR	13-May-16
511632	OLYMTFI	7-May-16	534742	ZUARI	13-May-16
519091	TASTYBIT	7-May-16	500780	ZUARIGLOB	13-May-16
512161	8KMILES	9-May-16	532166	ALKASEC	14-May-16
506401	DEEPAKNI	9-May-16	530829	CILSEC	14-May-16
526179	LUDLOWJUT	9-May-16	532133	IFGLREFRAC	14-May-16
522241	MMFL	9-May-16	590130	KANCOTEA	14-May-16
513605	SRIPIPES	9-May-16	530443	KIRANSY-B	14-May-16
532893	VTMLTD	9-May-16	504398	SJCORP	14-May-16
505665	ABCBEARS	10-May-16	523628	PODDAR	16-May-16
517041	ADORWELD	10-May-16	532725	SOLARINDS	16-May-16
532548	CENTURYPLY	10-May-16	517334	MOTHERSUMI	17-May-16
511728	KZLFIN	10-May-16	500337	PRIMESECU	17-May-16
521018	MARALOVER	10-May-16	517562	TRIGYN	17-May-16
523828	MENONBE	10-May-16	500228	JSWSTEEL	18-May-16
500472	SKFINDIA	10-May-16	501423	SHAILY	18-May-16
505192	SMLISUZU	10-May-16	524212	WANBURY	18-May-16
539353	SWARAJAUTO	10-May-16	532173	CYBERTECH	19-May-16
532812	TFL	10-May-16	532526	DISHMAN	19-May-16
500877	APOLLOTYRE	11-May-16	500133	ESABINDIA	19-May-16
500820	ASIANPAINT	11-May-16	505750	JOSTS	19-May-16
500085	CHAMBLFERT	11-May-16	532988	RANEENGINE	19-May-16
500247	KOTAKBANK	11-May-16	531088	TULIPSTA	19-May-16
509220	PTL	11-May-16	533023	WABCOINDIA	19-May-16
539678	QUICKHEAL	11-May-16	513117	AMFORG	20-May-16
500350	RSWM	11-May-16	500038	BALRAMCHIN	20-May-16
533553	TDPOWERSYS	11-May-16	590043	HARITASEAT	20-May-16
503960	BBL	12-May-16	505737	INTLCOMBQ	20-May-16
500124	DRREDDY*	12-May-16	506943	JBCHEPHARM	20-May-16
532809	FSL	12-May-16	517344	MINDTECK	20-May-16
509488	GRAPHITE	12-May-16	524558	NEULANLAB	20-May-16
500189	HINDUJAVEN	12-May-16	500260	RAMCOCEM	20-May-16
523207	KOKUYOCLN	12-May-16	532369	RAMCOIND	20-May-16
531213	MANAPPURAM	12-May-16	532661	RML	20-May-16
500790	NESTLEIND	12-May-16	500403	SUNDRMFAST	20-May-16
520056	SUNCLAYLTD	12-May-16	522113	TIMKEN	20-May-16
521064	TRIDENT	12-May-16	506690	UNICHEMLAB	20-May-16
531846	TRINITYLEA	12-May-16	526775	VALIANT	20-May-16
531335	ZYDUSWELL	12-May-16	533470	RUSHIL	21-May-16
526955	ABL BIO	13-May-16	521240	SAMBANDAM	21-May-16
532321	CADILAHC	13-May-16	500266	MAHSCOOTER	23-May-16

532987	RBL	23-May-16	500346	PUNJCOMMU	27-May-16
532978	BAJAFINSV	24-May-16	505800	RANEHOLDIN	27-May-16
500034	BAJFINANCE	24-May-16	506655	SUDARSCHEM	27-May-16
523736	DPL	24-May-16	519500	BKV	28-May-16
500170	GTNINDS	24-May-16	508939	BLCISER	28-May-16
523642	PIIND	24-May-16	530859	COSBOARD	28-May-16
519230	RICHIRICH	24-May-16	538319	GCMCAPI	28-May-16
590072	SUNDRMBRAK	24-May-16	500202	INDLEASE	28-May-16
519174	ASHAI	25-May-16	511092	JMDTELEFILM	28-May-16
532977	BAJAJ-AUTO	25-May-16	506079	LAKPRE	28-May-16
500490	BAJAJHLDNG	25-May-16	501343	MOTOGENFIN	28-May-16
500660	GLAXO	25-May-16	530557	NCLRESE	28-May-16
500164	GODREJIND	25-May-16	533202	NITESHEST	28-May-16
533217	HMVL	25-May-16	524038	VENLONENT	28-May-16
532777	NAUKRI	25-May-16	509038	VOLLF	28-May-16
500338	PRISMCEM	25-May-16	509480	BERGEPAIN	30-May-16
530073	SANGHVIMOV	25-May-16	531175	BLSINFOTE	30-May-16
519234	SIEL	25-May-16	500067	BLUESTARCO	30-May-16
526827	SPICEISL	25-May-16	531458	BOSTONBIO	30-May-16
533158	THANGAMAYL	25-May-16	539131	CLLIMITED	30-May-16
532515	TVTODAY	25-May-16	507833	COMPUPN	30-May-16
523319	BALMLAWRIE	26-May-16	531270	DAZZEL	30-May-16
514440	BPTX	26-May-16	531306	DHPIND	30-May-16
534804	CARERATING	26-May-16	535917	GCMCOMM	30-May-16
500144	FINCABLES	26-May-16	535431	GCMSECU	30-May-16
517300	GIPCL	26-May-16	530263	GLOBALCA	30-May-16
532662	HTMEDIA	26-May-16	531608	GORANIN	30-May-16
539276	KAYA	26-May-16	531737	GREENCREST	30-May-16
526299	MPHASIS	26-May-16	511543	GSBFIN	30-May-16
500387	SHREECEM	26-May-16	524754	GUJMEDI	30-May-16
531652	THIRDFIN	26-May-16	532851	INSECTICID	30-May-16
500414	TIMEX	26-May-16	538422	JACKSON	30-May-16
509910	ZSOUTGAS	26-May-16	526558	JAMEHOT	30-May-16
500103	BHEL	27-May-16	530405	JINDCAP	30-May-16
506315	BORAX	27-May-16	535730	KHOBSURAT	30-May-16
522261	DOLPHINOFF	27-May-16	524280	KOPRAN	30-May-16
507794	KHAICHEM	27-May-16	539446	KRISHFAB	30-May-16
523248	MACPLASQ	27-May-16	531164	LADIAMO	30-May-16
531049	NEELKAN	27-May-16	506113	LIFELINE	30-May-16

531319	MARUTISE	30-May-16	521226	UNIROYAL	30-May-16
523197	MAZDAPR	30-May-16	531831	UNISH	30-May-16
526251	MIDEASTP	30-May-16	531762	UNJHAFOR	30-May-16
514332	NEOINFRA	30-May-16	539123	VBIND	30-May-16
535514	PRIMECAPM	30-May-16	530401	VINYOFL	30-May-16
530125	SAMRATPH	30-May-16	511690	WARNER	30-May-16
526532	SFPIL	30-May-16	516030	YASHPPR	30-Jul-16
531411	TUNITEX	30-May-16			

EARNING ESTIMATE Q4FY16

BSE Code	Company Name	SALES (Cr.)	SALES Growth	PAT (Cr.)	PAT Growth
500086	EXIDEIND	1546.1	(6.00)	129.5	(5.90)
532500	MARUTI	14529.7	6.60	1207.4	(6.00)
500002	ABB	1880	3.60	76	40.00
500410	ACC	2985	3.50	213.9	(14.30)
500425	AMBUJACEM	2485.3	2.50	303.5	(4.50)
532538	ULTRACEMCO	6398.8	4.20	572	(7.00)
500096	DABUR	2103.6	8.20	305	7.10
533573	APLLTD	806.2	60.70	178.7	154.00
532523	BIOCON	870.8	4.90	105.5	(47.60)
500674	SANOFI	550	12.50	63.2	30.60
500295	VEDL	15679.9	(11.90)	422.3	(42.20)
532832	IBREALEST	640	7.70	61.4	(34.10)
532313	MAHLIFE	230.1	(11.20)	28.2	(8.00)
532281	HCLTECH	10854.4	17.10	1872.8	11.20
532400	KPIT	842.4	10.40	81.1	61.20
500408	TATAELXI	289.1	25.00	39.3	31.80
532454	BHARTIARTL	24795.8	7.70	985.6	(21.50)
534816	INFRATEL	3120.3	5.90	619.9	11.20
532822	IDEA	9469.8	12.40	507.1	(46.20)
506395	COROMANDEL	2862.7	(4.50)	90.1	31.30
532622	GDL	265.6	0.20	30.8	(36.80)
532706	INOXLEISUR	243.9	12.00	-6.9	Loss
539448	INDIGO	4131.5	8.10	513.7	0.20
512070	UPL	3962.4	9.30	510.5	13.00
532215	AXISBANK	4212.2	10.90	2376.7	9.00
500469	FEDERALBNK	596.4	(4.30)	193.4	(31.10)
532174	ICICIBANK	5503.7	8.40	2926.5	0.20
532648	YESBANK	1218.8	24.70	698.2	26.70
535789	IBULHSGFIN	879.3	9.00	657.7	19.40
511218	SRTRANSFIN	1364.5	25.70	279.6	(11.70)

RESULT Q4FY16

BSE Code	Company Name	SALES (Cr.)	SALES Growth	PAT (Cr.)	PAT Growth
532400	KPIT	840.71	10.19	88.50	75.91
532706	INOXLEISUR	286.92	41.33	16.12	-497.04
500086	EXIDEIND	1756.29	6.88	177.55	29.04
506235	ALEMBICLTD	27.03	-16.26	24.92	486.35
500165	KANSAINER	891.21	10.72	615.17	919.00

533148	JSWENERGY	3229.00	50.11	572.00	75.88
506395	COROMANDEL	3020.00	1.34	92.68	34.98

Economic Calendar					
Country	Monday 25th April 16	Tuesday 26th April 16	Wednesday 27th April 16	Thursday 28th April 16	Friday 29th April 16
US	Core Durable Goods Orders m/m , Durable Goods Orders m/m , New Home Sales .	S&P/CS Composite-20 HPI y/y , CB Consumer Confidence , Richmond Manufacturing Index .	Goods Trade Balance , Pending Home Sales m/m , Crude Oil Inventories , FOMC Statement, Federal Funds Rate .	Advance GDP q/q , Unemployment Claims , Advance GDP Price Index q/q , Natural Gas Storage .	Core PCE Price Index m/m , Employment Cost Index q/q , Personal Spending m/m , Personal Income m/m , Chicago PMI , Revised UoM Consumer Sentiment , Revised UoM Inflation Expectations
UK/EURO ZONE	Nationwide HPI m/m , BBA Mortgage Approvals.	German Import Prices m/m ,	French Consumer Spending m/m , M3 Money Supply y/y , Private Loans y/y , Prelim GDP q/q , Index of Services 3m/3m .	German Prelim CPI m/m , German Unemployment Change, Italian Monthly Unemployment Rate , Italian Prelim CPI m/m .	German Prelim CPI m/m , German Unemployment Change, Italian Monthly Unemployment Rate , Italian Prelim CPI m/m .
INDIA					



(Regn. No. : INP 00004011)

Narnolia Securities Ltd.

Narnolia Research Lab
 Stellar IT Park | 5th Floor | Office Space No. 6 | Tower-II Ind Plot
 No. C-25 | Sector-62 | Noida | Ph : 0120-4215110

Narnolia Securities Ltd.
 201 | 2nd Floor | Marble Arch Building | 236B-AJC Bose Road Kolkata-
 700 020 Ph : 033-40501500
 Email : narnolia@narnolia.com website : www.narnolia.com