

SGX NIFTY : 8147 ( 152 Pt Up )

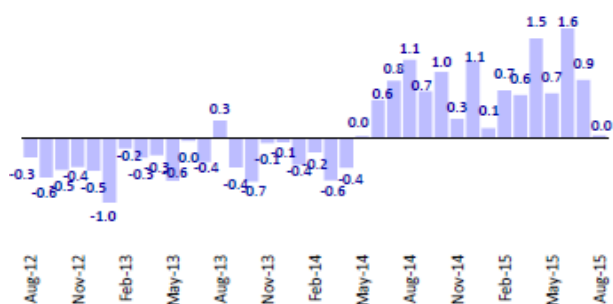
**Quote of the Day**

"The best protection against inflation is your own earning power. If you are the best teacher, you will command earning power and get your share of the national economic pie, regardless of the value of the currency. The second best investment is in a good company."

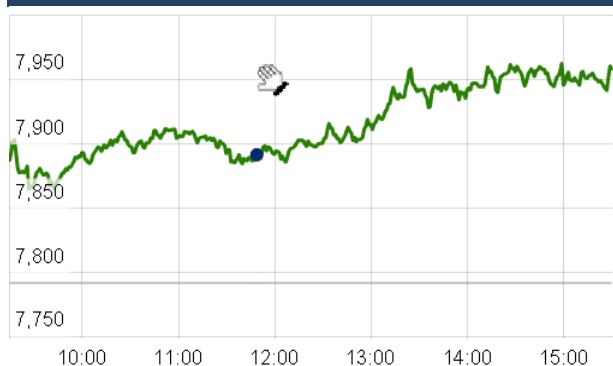
Warren Buffett

**Chart of the Day**

**DII trend**



**Index Action Nifty ( 27th Aug 15 )**



**Index**

Contents	Page	Coverage
News	2	Update
Economic Calendar	3	Update

**Market**

Name	Value	Change
Sensex	26,231.19	516.53
Nifty	7948.95	157.10
DOW	16,654.41	369.26
NASDAQ	4,812.71	115.17
CAC	4,658.18	157.13
DAX	10,315.62	318.19
FTSE	6,192.03	212.13
NIKKIE	19,066.51	492.07
HANG SENG	22,086.16	248.07
EW ALL SHARE	137.88	296.45

**Instituional Turnover**

**FII**

Investor	Buy(Cr.)	Sale(Cr.)	Net(Cr.)
27th Aug,15	7474.44	10821.79	(3347.35)
Aug,15	51835.36	54268.36	(2433.00)
2015	773326.91	753608.70	19718.21

**DII**

Investor	Buy(Cr.)	Sale(Cr.)	Net(Cr.)
27th Aug,15	5078.89	2501.83	2577.06
Aug,15	21793.32	19481.95	2311.37
2015	298581.56	270567.65	28013.91

**Commodity Price**

Commodity/Currencies	Value	
GOLD	26291.00	↓
SILVER	34070.00	↑
CRUDEOIL	43.12	↑
COPPER	340.00	↑
NATURALGAS	177.60	↓
DOLLAR/RS.	66.02	↑
EURO/RS.	74.22	↓
POUND/RS.	101.77	↓

## Market Snapshot

### Top Price Performers

Top Performers 1D	% Change	Top Performers 1W	% Change	Top Performers 1M	% Change
PGEL	19.98	ORISSASP	98.00	SHRENUJ	66.36
SYMPHONY	18.94	IBREALEST	18.33	JUBLINDS	62.05
GOLDIAM	18.42	INDOSOLAR	18.27	ORISSASP	60.16
ESCORTS	18.32	VIDEOIND	18.17	ENERGYDEV	49.09
BHAGWATIHO	17.60	ESTER	17.41	NITINFIRE	38.16

### Worst Price Performers

Worst Performers 1D	% Change	Worst Performers 1W	% Change	Worst Performers 1M	% Change
STEERINTER	(19.68)	IMPEXFERRO	(28.86)	AMTEKAUTO	(68.44)
SOUISPAT	(16.67)	SOUISPAT	(28.57)	AMTEKINDIA	(62.11)
UTTAMSUGAR	(11.03)	TRF	(27.12)	AHMEDFORGE	(54.28)
DHARSUGAR	(10.73)	TUNITEX	(25.00)	JYOTISTRUC	(53.93)
IMPEXFERRO	(9.79)	GOLDTECH	(24.17)	TRF	(49.62)

## Top News

- Cipla Mgt Guideline** : Cipla , which has recently acquired Brazil's Duomed Produtos Farmaceuticos Ltd and Uganda-based Quality Chemicals Ltd (QCL), is now looking to grow organically. The company is aiming at achieving a growth of 70-80 percent growth without making any major acquisitions in the near future.
- Bombay Dyeing & Manufacturing** Company chairman Nusli Wadia offloaded more than 19.26 lakh shares of the textile company for over Rs 12 crore through an open market transaction. The shares were purchased on an average price of Rs 63.87, valuing the transaction at Rs 12.30 crore. In a separate bulk deal, Merrill Lynch Capital Markets Espana has sold 15.41 lakh shares of India Cements. These scrips were offloaded on a price of Rs 72.61 apiece valuing the transaction at Rs 11.18 crore.
- HDFC** has raised Rs 2,000 crore through sale of bonds in order to boost lending operations and meet its future capital needs. The bonds, which has a tenure of five years, attracted a coupon rate of 8.5 percent . HDFC has successfully garnered Rs 2,000 crore by selling the bonds.
- DLF** is likely to close a deal with the Singapore government's sovereign fund GIC as early as next week. This deal will see GIC picking up a 50 percent stake in one of DLF's upcoming residential projects in Delhi, named Capital Greens for around Rs 2,000 crore.
- Daimler India Commercial Vehicles (DICV)** has tied up with Canara Bank and State Bank of Bikaner and Jaipur (SBBJ) to provide loans to its customers across the country.
- Ultratech** keen to acquire JP's Bhilai cement plant too . The issue will be discussed at UltraTech's annual general meeting scheduled for tomorrow in which Group Chairman Kumar Mangalam Birla will address the shareholders highlighting the industry issues, its impact on business, strategic moves made and the future outlook.
- NHPC** has restored Unit-2 of Chutak power station in Kargil district of Jammu and Kashmir. The unit was shut down due to sudden increase in the water level earlier. Chutak power station is run-of-the-river scheme with an installed capacity of 44 MW and harnesses the Hydropower potential of river Suru in Kargil district.
- Lupin** has received approval from US health regulator USFDA to market generic Omeprazole delayed-release capsules, used to treat ulcer, in the American market. The company has received final approval for its Omeprazole delayed-release capsules (40 mg) from the United States Food and Drugs Administration (USFDA)
- Indian Oil Corp (IOC)** is increasing crude oil imports from as far as Latin America and raising proportion of purchase from spot or cash market to cut costs . IOC, the nation's biggest oil firm, spent Rs 1.65 lakh crore on import of 43.9 million tons of crude oil in 2014-15.
- Bosch** inaugurated its new manufacturing plant at Bidadi, near here, which has come up at an investment of Rs 340 crore. The plant, which has come up on an area of 38,000 sqm, would manufacture products for the diesel systems division.
- Japan retail sales** rose to a seasonally adjusted annual rate of 1.6%, from 0.9% in the preceding month. Analysts had expected retail sales to rise at annual rate of to 1.1% last month.
- Japan unemployed and actively seeking employment during the previous month** fell to a seasonally adjusted 3.3%, from 3.4% in the preceding month. Analysts had expected the rate of unemployment to remain unchanged at 3.4% last month.
- U.K. Gfk Consumer confidence** rose to a seasonally adjusted 7, from 4 in the preceding month. Analysts had expected U.K. Gfk Consumer confidence to remain unchanged at 4 last month.
- U.S. Natural Gas Storage** rose to a seasonally adjusted annual rate of 69B, from 53B in the preceding month. Analysts had expected U.S. Natural Gas Storage to rise 59B last month.
- U.S. initial jobless** benefits in the week ending August 22 declined by 6,000 to a seasonally adjusted 271,000 from the previous week's total of 277,000

### Economic Calendar

Country	Monday 24th Aug 15	Tuesday 25th Aug 15	Wednesday 26th Aug 15	Thursday 27th Aug 15	Friday 28th Aug 15
US		CB Consumer Confidence , New Home Sales , S&P/CS Composite-20 HPI y/y , HPI m/m .	Core Durable Goods Orders m/m ,Durable Goods Orders m/m , Crude Oil Inventories .	Prelim GDP q/q , Unemployment Claims , Prelim GDP Price Index q/q , Pending Home Sales m/m , Natural Gas Storage .	Goods Trade Balance , Core PCE Price Index m/m , Personal Spending m/m , Personal Income m/m , Revised UoM Consumer Sentiment , Revised UoM Inflation Expectations .
UK/EURO ZONE	German Ifo Business Climate	BBA Mortgage Approvals , Belgian NBB Business Climate , German Final GDP q/q , German Ifo Business Climate .	CBI Realized Sales , Nationwide HPI m/m , German 30-y Bond Auction .	German Prelim CPI m/m ,Employment Level , M3 Money Supply y/y , Private Loans y/y , Second Estimate GDP q/q , Prelim Business Investment q/q , Index of Services 3m/3m , Italian 10-y Bond Auction .	Spanish Flash CPI y/y ,German Import Prices m/m , Italian Monthly Unemployment Rate , Italian Quarterly Unemployment Rate , Italian Prelim CPI m/m
INDIA					

## Narnolia Securities Ltd.

### Narnolia Research Lab

Stellar IT Park | 5th Floor | Office Space No. 6 | Tower-IIInd Plot No. C-25 | Sector-62 | Noida |  
Ph : 0120-4215110

### Central Strategy Desk - Kolkata

124 | 1st Floor | 7/1 Lords Sinha Road | Kolkata - 71  
Ph : 033-22821500 | M : 93347 14418, 98302 69810