

SGX NIFTY : 7887 ( 32 Pt Down )

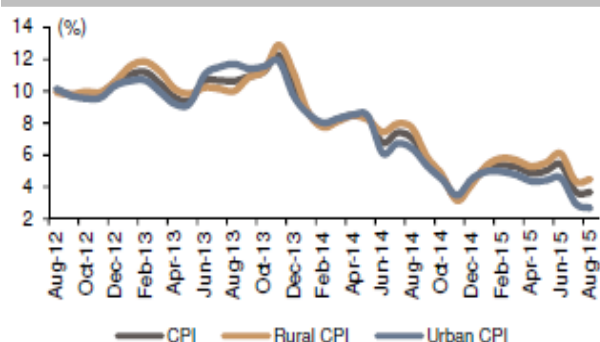
**Quote of the Day**

"Most businesses change in character and quality over the years, sometimes for the better, perhaps more often for the worse. The investor need not watch his companies' performance like a hawk; but he should give it a good, hard look from time to time."

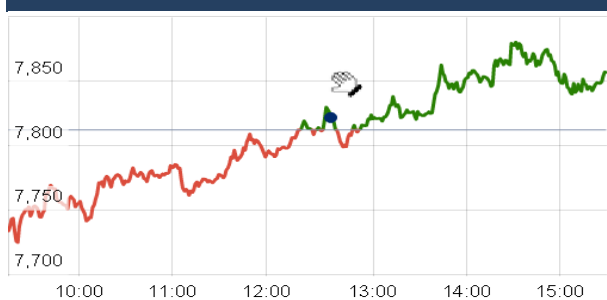
Benjamin Graham

**Chart of the Day**

**CPI Trend**



**Index Action Nifty (23th Sept 15 )**



**Index**

Contents	Page	Coverage
News	2	Update
Economic Calendar	3	Update

**Market**

Name	Value	Change
Sensex	25,863.50	40.51
Nifty	7868.50	22.55
DOW	16,314.67	113.35
NASDAQ	4,685.06	(47.98)
CAC	4,480.66	133.42
DAX	9,688.36	260.89
FTSE	6,109.10	147.52
NIKKIE	17,735.66	(144.96)
HANG SENG	21,186.36	90.24
EW ALL SHARE	13614.36	28.59

**Instituional Turnover**

**FII**

Investor	Buy(Cr.)	Sale(Cr.)	Net(Cr.)
24-Sep-15	5760.19	5875.29	(115.10)
Sept,15	33813.20	40540.52	(6727.32)
2015	855770.55	859670.83	(3900.28)

**DII**

Investor	Buy(Cr.)	Sale(Cr.)	Net(Cr.)
24-Sep-15	2624.14	2573.47	50.67
Sept,15	18743.05	13105.47	5637.58
2015	345041.37	297452.83	47588.54

**Commodity Price**

Commodity/Currencies	Value	
GOLD	26734.00	↓
SILVER	36072.00	↓
CRUDEOIL	45.23	↓
COPPER	337.80	↓
NATURALGAS	175.10	↓
DOLLAR/RS.	66.16	↑
EURO/RS.	74.00	↑
POUND/RS.	100.46	↑

## Market Snapshot

### Top Price Performers

Top Performers 1D	% Change	Top Performers 1W	% Change	Top Performers 1M	% Change
BILENERGY	20.00	ERAINFRA	64.71	ONELIFECAP	81.04
CANDC	19.96	KSOILS	63.33	FARMAXIND	69.23
CCCL	19.74	ANDHRACEMT	46.04	VASCONEQ	61.90
BHAGYNAGAR	19.49	ALLSEC	41.82	REIAGROLTD	60.47
V2RETAIL	15.89	RUSHIL	39.50	JRG	58.03

### Worst Price Performers

Worst Performers 1D	% Change	Worst Performers 1W	% Change	Worst Performers 1M	% Change
BIRLACOT	(20.00)	AMTEKINDIA	(22.15)	AEGISCHEM	(88.43)
GEMINI	(14.19)	PRITI	(20.74)	AMTEKINDIA	(61.69)
CALSREF	(12.50)	BIRLACOT	(20.00)	JMDTELEFILM	(48.24)
OMNITECH	(9.64)	JMDTELEFILM	(19.07)	ROLATAN	(44.09)
THANGAMAYL	(9.23)	ROLATAN	(18.76)	DECNGOLD	(41.23)

## Top News

- **Bharti Airtel** will use Liquid Telecom's fibre network to connect its mobile base stations across Africa, which will let its subscribers in the region to access better speeds on its 3G and 4G networks. The framework agreement enables Airtel operations to leverage Liquid Telecom's existing 20,000km-long fibre network across east, central and southern Africa, as well as enjoy new purpose-built fibre infrastructure, to connect Airtel's mobile base stations and enterprise customers with fibre . Airtel has invested significantly in mobile broadband technology across its African footprint and this agreement will deliver end to end fibre connectivity to our 3G and 4G base station

- **Sun Pharma Advanced Research Company** said the US health regulator has not approved its new drug application for Elepsia XR, an anti antiepileptic drug. The US Food and Drug Administration (USFDA) has issued a Complete Response letter (CRL) to the company's new drug application (NDA) for Elepsia XR

- **NTPC** in its board meeting next week will take a call on appointment of a mine developer-cum-operator (MDO) for its Jharkhand mine. "During the board meeting of NTPC on September 29 the decision on appointment of the MDO for Pakri-Barwadiah coal block in Jharkhand will be taken . A venture of Thriveni Earthmovers and Sainik Mining has emerged as the lowest bidder for Rs 23,000 crore contract of the Pakri-Barwadiah coal block

- **Australian drug discovery and development company Alchemia Ltd** has entered into an agreement for sale of exclusive intellectual property rights of fondaparinux sodium to Dr Reddy's Laboratories (DRL), for USD 17.5 million (about Rs 115.6 crore). Fondaparinux is a generic version of the anticoagulant drug Arixtra which is indicated for the treatment of deep vein thrombosis (DVT) and pulmonary embolism (PE). It is also indicated for prevention of DVT after major surgery, such as knee and hip replacement worldwide.

- **Indian Oil Corp** will make an investment of Rs 1.5 lakh crore, including Rs 50,000 crore for expanding its existing brownfield refineries, in the next five to seven years .

- **Siyaram Silk Mills** announced joint venture with leading Italian lifestyle brand Cadini. Company has bought ownership rights to manufacture and market Cadini brand for its fabric segment in India, Sri Lanka and few other countries in Middle East . Company expect Cadini to contribute around Rs 100 crore of our total revenues in the next financial year

- **Lanco Infratech's arm** Lanco Kondapalli Power Ltd has entered into power purchase agreements with electricity distribution companies of Telangana and Andhra Pradesh. With the commissioning of these plants, the company will have a consolidated operating power capacity of around 8,000 MW by FY 2018. The engineering, procurment and construction order book of Lanco (including power and solar projects) stands at Rs 28,158 crore.

- **University of Michigan said that consumer sentiment** rose to a seasonally adjusted 87.2, from 85.7 in the preceding month. Analysts had expected UoM consumer sentiment to rise to 86.7 last month.

- **U.S. Bureau of Economic Analysis said that GDP** rose to a seasonally adjusted annual rate of 3.9%, from 3.7% in the preceding quarter. Analysts had expected U.S. gross domestic product to rise 3.7% in the last quarter.

- **Japan's National Core CPI** fell to a seasonally adjusted -0.1%, from 0.0% in the preceding month. Analysts had expected Japan's National Core CPI to fall to -0.1% last month.

- **Instituto Nacional De Estadistic y Censos said that Argentinian Industrial Production** fell to 0.5%, from 0.7% in the preceding month. Analysts had expected Argentinian Industrial Production to rise to 1.1% last month.

- **U.S. Natural Gas Storage** rose to a seasonally adjusted annual rate of 106B, from 73B in the preceding month. Analysts had expected U.S. Natural Gas Storage to rise 96B last month.

### Economic Calendar

Country	Monday 28th Sept 15	Tuesday 29th Sept 15	Wednesday 30th Sept 15	Thursday 1th Oct 15	Friday 2th Oct 15
<b>US</b>	Core PCE Price Index m/m ,Personal Spending m/m ,Personal Income m/m , Pending Home Sales m/m ,	Goods Trade Balance , S&P/CS Composite-20 HPI y/y , CB Consumer Confidence .	ADP Non-Farm Employment Change ,Chicago PMI , Crude Oil Inventories .	Challenger Job Cuts y/y , Unemployment Claims ,ISM Manufacturing PMI , Final Manufacturing PMI , ISM Manufacturing Prices , Natural Gas Storage , Total Vehicle Sales .	Non-Farm Employment Change , Unemployment Rate , Average Hourly Earnings m/m
<b>UK/EURO ZONE</b>		German Import Prices m/m , German Prelim CPI m/m , French Consumer Spending m/m , French Consumer Spending m/m , Spanish Flash CPI y/y , Italian Monthly Unemployment Rate ,	Current Account ,Final GDP q/q , Net Lending to Individuals m/m , German Unemployment Change , CPI Flash Estimate y/y , Core CPI Flash Estimate y/y , Unemployment Rate .	Halifax HPI m/m ,Manufacturing PMI , FPC Meeting Minutes , ECB Monetary Policy Meeting Accounts .	German Retail Sales m/m ,Spanish Unemployment Change , PPI m/m , French 10-y Bond Auction .
<b>INDIA</b>		RBI Credit Policy	Current Account Q2	Auto sales No, HSBC Manufacturing PMI no .	

## Narnolia Securities Ltd.

### Narnolia Research Lab

Stellar IT Park | 5th Floor | Office Space No. 6 | Tower-I/Ind Plot No. C-25 | Sector-62 | Noida  
| Ph : 0120-4215110

### Central Strategy Desk - Kolkata

124 | 1st Floor | 7/1 Lords Sinha Road | Kolkata - 71  
Ph : 033-22821500 | M : 93347 14418, 98302 69810