

SGX NIFTY : 8699 ( 24 Pt Down)

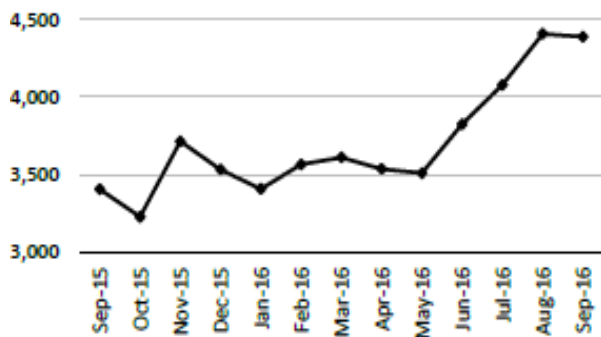
### Quote of the Day

In a bull market, one must avoid the error of the preening duck that quacks boastfully after a torrential rainstorm, thinking that its paddling skills have caused it to rise in the world. A right-thinking duck would instead compare its position after the downpour to that of the other ducks on the pond."

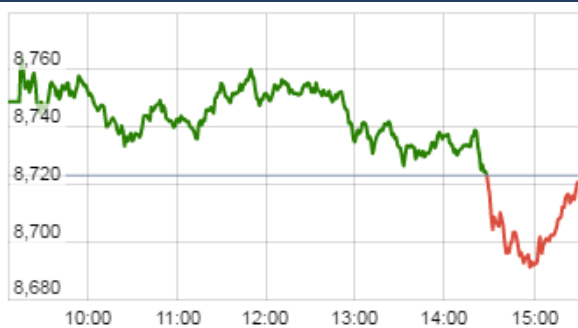
Warren Buffett

### Chart of the Day

#### Imported Coal Price



### Index Action Nifty ( 26th Sept 16 )



### Index

Contents	Page	Coverage
News	2	Update
Economic Calendar	3	Update

### Market

Name	Value	Change
Sensex	28,223.70	(70.58)
Nifty	8706.40	(16.65)
DOW	18,538.12	46.16
NASDAQ	5,288.22	30.73
CAC	4,379.63	(28.22)
DAX	10,321.23	(72.48)
FTSE	6,790.28	(27.76)
NIKKIE	16,683.93	139.37
HANG SENG	23,571.90	253.98
EW ALL SHARE	15501.69	(17.05)

### Instituional Turnover

#### FII

Investor	Buy(Cr.)	Sale(Cr.)	Net(Cr.)
26-Sep-16	3650.87	3806.63	(155.76)
Sept,16	80464.45	79593.72	870.73
2016	783702.07	758923.01	24779.06

#### DII

Investor	Buy(Cr.)	Sale(Cr.)	Net(Cr.)
26-Sep-16	2225.44	2134.77	90.67
Sept,16	40638.57	41760.99	(1122.42)
2016	332882.62	333672.93	(790.31)

### Commodity Price

Commodity/Currencies	Value	
GOLD	30978.00	↓
SILVER	45498.00	↓
CRUDEOIL	47.60	↓
COPPER	322.45	↓
NATURALGAS	203.60	↓
DOLLAR/RS.	66.48	↓
EURO/RS.	74.46	↓
POUND/RS.	86.36	↓

## Market Snapshot

### Top Price Performers

Top Performers 1D	% Change	Top Performers 1W	% Change	Top Performers 1M	% Change
GOACARBON	19.99	MMFSL	53.18	GTLINFRA	123.33
VIVIMEDLAB	19.99	FACORALL	50.00	PATELENG	122.77
VISHNU	19.98	KILITCH	43.43	MMFSL	89.25
MUKTAARTS	19.96	ADLABS	40.69	PRIMESECU	88.64
SOMDIST	19.69	GTLINFRA	36.73	RBL	86.81

Worst Performers 1D	% Change	Worst Performers 1W	% Change	Worst Performers 1M	% Change
SHREEKRPOL	(13.04)	MANDHANA	(68.93)	MANDHANA	(63.91)
BIRLACOT	(12.50)	ROLATAN	(44.22)	XCHANGING	(43.45)
CALSREF	(11.11)	SUPREMETEX	(18.24)	HINDUJAF0	(42.52)
FARMAXIND	(10.00)	FARMAXIND	(18.18)	SUPREMETEX	(41.93)
TANEJAERO	(8.84)	XLENERGY	(17.98)	GEINDSYS	(41.40)

### Top News

#### • Mgt Int : ONGC

>>Gas prices may fall to \$ 2.40-2.45/unit on GVC basis

>>Despite the price fall, ONGC is confident of volumes improving on back of project implementation.

>>Fall in Gas prices will improve bottomline and margins for the Co.

>>Also Variable cost of power plant too will come down for the company.

>>Gujarat Gas expects volumes to rise in the second half of the current fiscal.

#### • ONGC board vertically split on claiming gas compensation

The Board of ONGC is split on the issue of claiming compensation for Rs 11,000 crore worth of natural gas spewing from its KG basin block into adjoining fields of Reliance Industries.

#### Mgt Int : MANNAPURAM

>>Expecting good monsoon to reduce stress in rural economy.

>>Revamping its product strategy in the gold loan segment as well as diversifying the product division.

>>The Co. has also started an online facility for providing gold loans.

>>Expects loan growth to range between 25-30% in FY17.

>>Mgt also sees cost of borrowings coming down sub 10% going ahead

• **Lanco Infratech** may spin off its coal power projects into a single holding company and then may sell majority of it to OPG Power Ventures to ease the burden. The creation of new entity will be completed by the end of this calendar year.

• **Nalco** said the firm has purchased around 64.43 crore shares worth close to Rs 2,835 crore under its buyback offer. In May, the state-run firm has announced the buyback of up to 64,43,09,628 shares (representing 25 percent of the total number of shares in the paid-up share capital of the company).

• **Arvind Group** has decided to step into the USD 5.2 billion footwear retail industry with the store name 'Stride' and plans to open five footwear stores in the next one and half years.

The currently the fit-out cost for the stores is coming at Rs 2,200 per sq ft and each footwear store building should cost around Rs 50-70 lakh.

• **Parag Milk** will not see a big impact as only 5 percent of its sales come from exports . The company has managed to off-load its debt by Rs 100 crore and the current debt stands at Rs 250 crore . Company expects margins to improve to around 9-9.5 percent and sees a revenue growth of 20 percent for FY17.

• **Reliance Communications** is planning to pare the Rs 42,650-crore burden by up to 75 per cent over the next one year.

• **Italian Retail Sales** fell to -0.3%, from 0.3% in the preceding month whose figure was revised up from 0.2%. Analysts had expected Italian Retail Sales to remain unchanged at 0.0% last month.

• **Malaysian Unemployment Rate** rose to a seasonally adjusted 3.5%, from 3.4% in the preceding month. Analysts had expected Malaysian Unemployment Rate to remain unchanged at 3.4% last month.

• **Japan's index of leading economic indicators** rose to a seasonally adjusted 100.0, from 100.0 in the preceding month. Analysts had expected Japan's index of leading economic indicators to rise 100.0 last month.

• **New Zealand said that the trade balance** fell to a seasonally adjusted -1,265M, from -433M in the preceding month. Analysts had expected the trade balance to fall to -766M last month.

Economic Calendar					
Country	Monday 26th Sept 16	Tuesday 27th Sept 16	Wednesday 28th Sept 16	Thursday 29th Sept 16	Friday 30th Sept 16
US	New Home Sales.	CB Consumer Confidence , Richmond Manufacturing Index , Flash Services PMI .	Core Durable Goods Orders m/m , Durable Goods Orders m/m , FOMC Member Bullard Speaks , Crude Oil Inventories .	Final GDP q/q , Unemployment Claims , FOMC Member Powell Speaks , Fed Chair Yellen Speaks.	Core PCE Price Index m/m , Personal Spending m/m , Revised UoM Consumer Sentiment.
UK/EURO ZONE	ECB President Draghi Speaks , German Ifo Business Climate ,	M3 Money Supply y/y , German Import Prices m/m .	GfK German Consumer Climate.	Spanish Flash CPI y/y , German Unemployment Change , Net Lending to Individuals m/m .	Current Account , Final GDP q/q , German Retail Sales m/m , French Consumer Spending m/m.
INDIA					

**Risk Disclosure & Disclaimer :** This report/message is for the personal information of the authorized recipient and does not construe to be any investment, legal or taxation advice to you. Narnolia Securities Ltd. (Hereinafter referred as NSL) is not soliciting any action based upon it. This report/message is not for public distribution and has been furnished to you solely for your information and should not be reproduced or redistributed to any other person in any form. The report/message is based upon publicly available information, findings of our research wing "East wind" & information that we consider reliable, but we do not represent that it is accurate or complete and we do not provide any express or implied warranty of any kind, and also these are subject to change without notice. The recipients of this report should rely on their own investigations, should use their own judgment for taking any investment decisions keeping in mind that past performance is not necessarily a guide to future performance & that the the value of any investment or income are subject to market and other risks. Further it will be safe to assume that NSL and /or its Group or associate Companies, their Directors, affiliates and/or employees may have interests/ positions, financial or otherwise, individually or otherwise in the recommended/mentioned securities/mutual funds/ model funds and other investment products which may be added or disposed including & other mentioned in this report/message. NSL or any of its affiliates or employees shall not be in any way responsible for any loss or damage that may arise to any person from any action taken based on the above information or inadvertent error in the information contained in this report/message.



(Regn. No. : INP 000004011)

---

## **Narnolia Securities Ltd.**

### **Narnolia Research Lab**

Stellar IT Park | 5th Floor | Office Space No. 6 | Tower-IIInd Plot  
No. C-25 | Sector-62 | Noida | Ph : 0120-4215110

### **Central Strategy Desk - Kolkata**

201 | 2nd Floor | Marble Arch Building | 236B-AJC Bose Road  
Kolkata-700 020 , Ph : 033-40501500 |  
Email : [research@narnolia.com](mailto:research@narnolia.com) | [www.narnolia.com](http://www.narnolia.com)