

SGX NIFTY : 7890 (0.50 Pt Down)

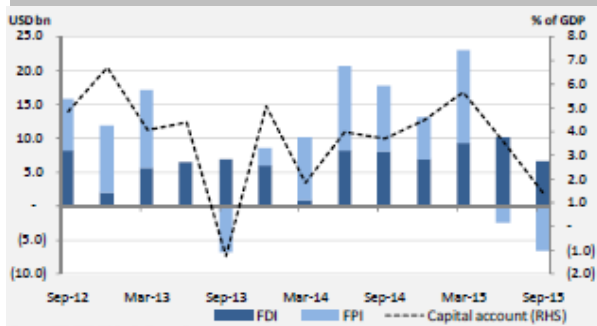
Quote of the Day

"Over the long term, it's hard for a stock to earn a much better return than the business which underlies it earns. If the business earns six percent on capital over forty years and you hold it for that forty years, you're not going to make much different than a six percent return - even if you originally buy it at a huge discount. Conversely, if a business earns eighteen percent on capital over twenty or thirty years, even if you pay an expensive looking price, you'll end up with one hell of a result."

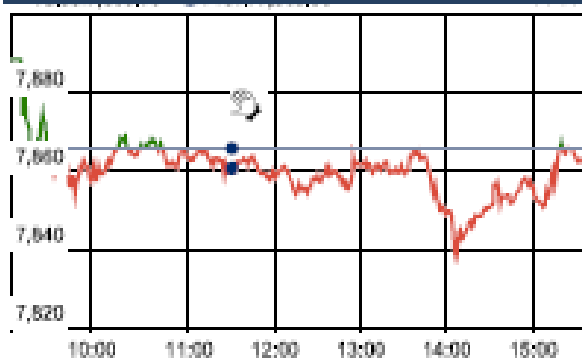
Charlie Munger

Chart of the Day

FDI Trend



Index Action Nifty (24th Dec 15)



Index

Contents	Page	Coverage
News	2	Update
Economic Calendar	3	Update

Market

Name	Value	Change
Sensex	25,838.71	(11.97)
Nifty	7861.05	(4.90)
DOW	17,550.17	(50.44)
NASDAQ	5,048.49	2.56
CAC	4,663.18	(11.35)
DAX	10,727.64	238.89
FTSE	6,254.64	13.66
NIKKEI	18,808.35	39.29
HANG SENG	22,052.91	(85.22)
EW ALL SHARE	13901.24	26.41

Institutional Turnover

FII

Investor	Buy(Cr.)	Sale(Cr.)	Net(Cr.)
24-Dec-15	1181.13	1293.16	(112.03)
Dec,15	50877.85	54173.18	(3295.33)
2015	1101520.39	1117656.21	(16135.82)

DII

Investor	Buy(Cr.)	Sale(Cr.)	Net(Cr.)
24-Dec-15	842.00	833.95	8.05
Dec,15	29354.58	20842.39	8512.19
2015	455186.85	389219.49	65967.36

Commodity Price

Commodity/Currencies	Value	
GOLD	25212.00	↑
SILVER	34345.00	↑
CRUDEOIL	37.81	↓
COPPER	313.30	↓
NATURALGAS	137.60	↑
DOLLAR/RS.	66.21	↑
EURO/RS.	72.52	↑
POUND/RS.	99.58	↑

Market Snapshot

Top Price Performers

Top Performers 1D	% Change	Top Performers 1W	% Change	Top Performers 1M	% Change
PRAENG	20.00	SPENTEX	88.48	DONEAR	124.43
RMMIL	20.00	PIRLIFE	65.14	GEMINI	122.00
ARSSINFRA	20.00	PARACABLES	64.45	RAMANEWS	101.20
KEMROCK	20.00	RMMIL	55.06	SPENTEX	100.00
PIPAVAVDOC	19.99	SHREEKRPOL	52.17	RUBYMILLS	97.52

Worst Performers 1D	% Change	Worst Performers 1W	% Change	Worst Performers 1M	% Change
PRITI	(9.84)	SHRENUJ	(22.38)	SHRENUJ	(48.66)
RICOHQ	(9.83)	PRITI	(19.12)	PRITI	(38.89)
INFODRIVE	(7.14)	RASOYPR	(16.67)	AMTEKINDIA	(36.30)
ALCHEM	(7.04)	HBLPOWER	(15.08)	SEZAL	(30.43)
HANUNG	(6.51)	NETWORK	(14.08)	KGNIND	(29.82)

Top News

• **Fund Action** : Morgan Stanley Asia (Singapore) Pte sold 22,09,910 shares of Udaipur Cement Works at Rs 13.11 on the BSE.

** Clearwater Capital Partners Singapore Fund III Private Limited sold 16,34,045 shares of Oricon Enterprises at Rs 56.04 sold 23,65,955 shares at Rs 56.17 on the BSE.

** HSBC Bank (Mauritius) Limited sold 15,62,592 shares of Opto Circuits at Rs 12.27 on the NSE.

** Reliance Mutual Fund A/C Reliance Mid And Small Cap Fund sold 5,50,000 shares of Mcleod Russel at Rs 172.67 on the NSE.

** Larsen & Toubro Limited sold 55,00,000 shares of Astra Microwave Products at Rs 135.80 on the NSE and sold 24,50,045 shares at Rs 135.82 on the BSE.

• **Tata Power Company** announced that it has signed a Memorandum of Understanding (MoU) with the Ministry for Development of Russian Far East, Government of Russian Federation, to explore and develop investment opportunities in the energy sector. The MoU, signed under the ambit of Indo-Russia bilateral summit happening in Moscow, reflects the mutual intentions of the parties to cooperate for the purpose of realisation of investment projects in the energy sector across the Russian Far East.

• **Naukri.com parent Info Edge** has invested Rs 15 crore in Bengaluru-based Canvera Digital Technologies that operates an online photography service Canvera.com, as per a stock market disclosure. The investment was made at a pre-money valuation of Rs 75 crore.

• **GMR Infrastructure** said agreements have been executed for the proposed restructuring of holdings in GMR Airports Ltd. GMR Infrastructure, which has interests in airports, power and other sectors, is looking to consolidate its holdings in GAL. In April, the diversified group had exercised its call option right on the Compulsorily Convertible Preference Shares (CCPS) held by the private equity investors of GAL.

• **GAIL India Ltd** will take 5 per cent stake in the international consortium building the \$8.7 billion Turkmenistan-Afghanistan-Pakistan-India (TAPI) gas pipeline. The four nations building the pipeline had in August agreed to co-own the project and a joint venture company with participation of each country is to be set up to build and operate the 1,814-kilometre line. The TAPI pipeline will have a capacity to carry 90 million standard cubic metres a day (mmscmd) gas for 30 years and is planned to become operational in 2018.

• **U.S. Crude Oil Inventories** fell to a seasonally adjusted annual rate of -5.877M, from 4.801M in the preceding month. Analysts had expected U.S. Crude Oil Inventories to rise 1.083M last month.

• **Consumer sentiment** rose to a seasonally adjusted 92.6, from 91.8 in the preceding month. Analysts had expected UoM consumer sentiment to rise to 92.0 last month.

• Ministry of Economy Trade and Industry said that retail sales fell to a seasonally adjusted annual rate of -1.0%, from 1.8% in the preceding month. Analysts had expected retail sales to fall at annual rate of to -0.6% last month.

• **Japanese Household Spending** fell to a seasonally adjusted -2.9%, from -2.4% in the preceding month. Analysts had expected Japanese Household Spending to remain unchanged at -2.4% last month.

• **Ministry of Economy, Trade and Industry** said that industrial production fell to a seasonally adjusted -1.0%, from 1.4% in the preceding month. Analysts had expected industrial production to fall -0.6% last month.

• **Infrastructure and Transport said that Japanese Housing Starts** rose to a seasonally adjusted 1.7%, from -2.5% in the preceding quarter. Analysts had expected Japanese Housing Starts to rise to 1.0% in the last quarter.

Economic Calendar

Country	Monday 28th Dec 15	Tuesday 29th Dec 15	Wednesday 30th Dec 15	Thursday 31th Dec 15	Friday 1th Jan 16
US		Goods Trade Balance , S&P/CS Composite-20 HPI y/y .	Chicago PMI ,Pending Home Sales m/m , Crude Oil Inventories .	Unemployment Claims , Natural Gas Storage .	
UK/EURO ZONE	Italian 10-y Bond Auction	German Prelim CPI m/m ,French Consumer Spending m/m , Index of Services 3m/3m .	Spanish Flash CPI y/y , M3 Money Supply y/y , Private Loans y/y , German Import Prices m/m .	ECB Monetary Policy Meeting Accounts , Housing Equity Withdrawal q/q .	
INDIA					



SEBI Registered Portfolio Manager

(Regn. No. : INP 000004011)

Narnolia Securities Ltd.

Narnolia Research Lab

Stellar IT Park | 5th Floor | Office Space No. 6 | Tower-II/nd Plot No. C-25 | Sector-62 | Noida | Ph : 0120-4215110

Central Strategy Desk - Kolkata

124 | 1st Floor | 7/1 Lords Sinha Road | Kolkata - 71
Ph : 033-22821500 | M : 93347 14418, 98302 69810