

SGX NIFTY : 7029 ( 26 Pt Down)

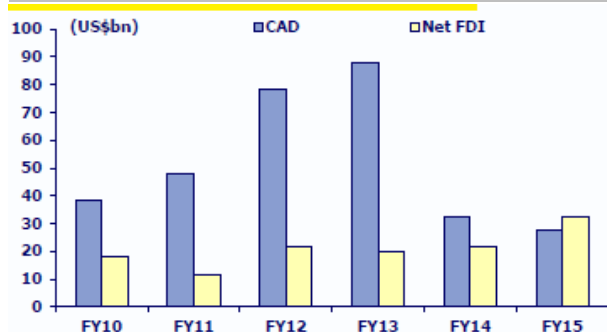
**Quote of the Day**

"We've long felt that the only value of stock forecasters is to make fortune tellers look good. Even now, Charlie (Munger) and I continue to believe that short-term market forecasts are poison and should be kept locked up in a safe place, away from children and also from grown-ups who behave in the market like children."

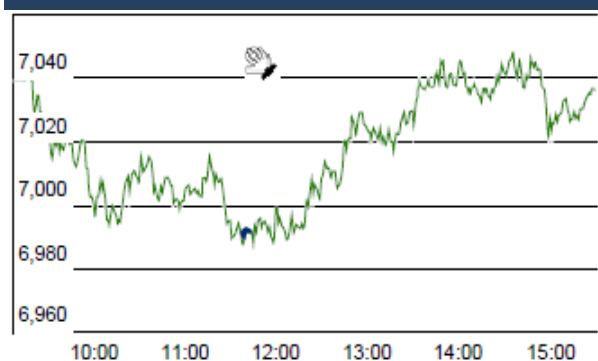
Warren Buffett

**Chart of the Day**

**Current Account Deficit Vs FDI**



**Index Action Nifty ( 26th Feb 16 )**



**Index**

Contents	Page	Coverage
News	2	Update
Economic Calendar	3	Update

**Market**

Name	Value	Change
Sensex	23,154.00	178.50
Nifty	7029.75	59.15
DOW	16,639.97	-57.32
NASDAQ	4,590.67	8.26
CAC	4,314.57	66.12
DAX	9,513.30	181.82
FTSE	6,069.81	83.20
NIKKEI	16,286.55	98.14
HANG SENG	19,185.07	(178.00)
EW ALL SHARE	1215.05	47.17

**Instituional Turnover**

**FII**

Investor	Buy(Cr.)	Sale(Cr.)	Net(Cr.)
26-Feb-16	2807.45	3502.82	(695.37)
Feb,16	52603.16	59549.29	(6946.13)
2016	124095.08	145397.22	(21302.14)

**DII**

Investor	Buy(Cr.)	Sale(Cr.)	Net(Cr.)
26-Feb-16	2043.48	1259.34	784.14
Feb,16	29797.96	23546.46	6251.50
2016	71502.43	52153.24	19349.19

**Commodity Price**

Commodity/Currencies	Value	
GOLD	29337.00	↓
SILVER	36520.00	↓
CRUDEOIL	32.16	↑
COPPER	327.05	↑
NATURALGAS	121.60	↓
DOLLAR/RS.	68.62	↓
EURO/RS.	75.71	↑
POUND/RS.	95.30	↓

## Market Snapshot

### Top Price Performers

Top Performers 1D	% Change	Top Performers 1W	% Change	Top Performers 1M	% Change
BIRLACOT	25.00	PGEL	33.91	LLOYDMETAL	50.21
MCDHOLDING	19.96	BFINVEST	32.84	NDTV	48.22
UBHOLDINGS	19.95	BIRLACOT	25.00	RAMKY	39.43
CALSREF	16.67	SMARTLINK	23.52	RUSHIL	33.97
GEE	14.29	MCDHOLDING	21.79	INFODRIVE	26.32

Worst Performers 1D	% Change	Worst Performers 1W	% Change	Worst Performers 1M	% Change
PRIMEPRO	(20.00)	TWL	(33.08)	PDUMJEPULP	(65.82)
TWL	(18.88)	TEXRAIL	(31.09)	SUPREMEINF	(46.99)
TEXRAIL	(17.40)	KALINDEE	(30.71)	RESTILE	(46.32)
KALINDEE	(17.15)	STCINDIA	(26.75)	FOURSOFT	(46.30)
SAHARAHOUS	(10.71)	FACORALL	(23.00)	RAMSARUP	(46.09)

## Top News

- **UltraTech** announced acquisition of debt-ridden JP Group's cement plants for Rs 16,500 crore (about USD 2.5 billion), making it one of the biggest deals in the sector. UltraTech Cement said it entered into a binding Memorandum of Understanding with Jaiprakash Associates Limited for the acquisition of its identified cement plants having total cement capacity of 22.4 MTPA (million tons per annum) situated in Madhya Pradesh, Uttar Pradesh, Himachal Pradesh, Uttarakhand, Andhra Pradesh and Karnataka.

- **Vedanta** wins gold mine auction in Chhattisgarh, first in country . Vedanta Ltd won the auction for Baghmara (Sonakhan) gold mine with its highest bid of 12.55 per cent of IBM (Indian Bureau of Mining) price of Rupees 74,712/ troy ounce (1 troy ounce = 31.10 gram) . The production from the Baghmara mine can reduce the gold imports into the country

- **The Centre** has given environment clearance to a Rs 114 crore project that seeks to set up a multi-product special economic zone (SEZ) in Nellore district, Andhra Pradesh. Andhra Pradesh Industrial Infrastructure Corporation Ltd (APIIC) will develop the proposed SEZ project in 1,032.27 hectare at Naidupet in Nellore. The project will provide direct and indirect jobs to 40,000 people.

- **Dr Reddy's Laboratories (DRL)** has started recalling some lots of its Paricalcitol capsules of one microgram (mcg), two mcg, four mcg strengths from the US markets. The company has called for actions voluntarily due to reports of breakage and leakage of the capsules. According to a notification put by the US Food and Drug Administration (USFDA), these lots are recalled under 'Class-III' classification, which was described as a situation in which use of or exposure to a violated product is not likely to cause adverse health consequences.

### • Gammon India says

-Lenders to convert part of debt into equity at Rs 11.89/share as part of CDR

-Post conversion, shareholding of CDR lenders at 55.43 percent of total equity capital

### • PSU banks' NPAs may increase to average 7 percent in Q4FY16

-Finance ministry to encourage PSU banks to publicly declare wilful defaulters

-Prime minister Narendra Modi may attend 2nd Gyan Sangam with finance minister Arun Jaitley, RBI Governor Raghuram Rajan, PSU banks on March 4-5

-Gyan Sangam to discuss quantum, timelines of banks' recapitalisation

-Banks recapitalisation likely to be enhanced to Rs 30,000-35,000 crore in FY17

-PSU banks may be asked to engage with asset reconstruction companies to sort out non-performing asset (NPA) issue

- **Instituto Nacional de Estadística said that Spanish CPI** rose to 0.3%, from -1.9% in the preceding month. Analysts had expected Spanish CPI to rise 0.1% last month.

- **U.S. consumer sentiment** rose to a seasonally adjusted 91.7, from 90.7 in the preceding month. Analysts had expected UoM consumer sentiment to rise to 91.0 last month.

- **Bureau of Economic Analysis said that U.S. Personal Income** rose to a seasonally adjusted 0.5%, from 0.3% in the preceding month. Analysts had expected U.S. Personal Income to rise 0.4% last month.

- **Mexican Unemployment Rate** rose to a seasonally adjusted annual rate of 4.24%, from 3.96% in the preceding month. Analysts had expected Mexican Unemployment Rate to rise to 4.40% last month.

- **U.S. growth domestic product** showed growth of 1.0%, revised up from the initial reading of a 0.7% rise. Analysts had expected growth to suffer a downward revision to 0.7%.

- **U.S. GDP** rose to a seasonally adjusted annual rate of 1.0%, from 0.7% in the preceding quarter. Analysts had expected U.S. gross domestic product to rise 0.4% in the last quarter.

### Economic Calendar

Country	Monday 29th Feb 16	Tuesday 1st Mar 16	Wednesday 2th Mar 16	Thursday 3th Mar 16	Friday 4th Mar 16
<b>US</b>	Chicago PMI, Pending Home Sales m/m	ISM Manufacturing PMI , Construction Spending m/m.	Crude Oil Inventories, Beige Book,	Challenger Job Cuts y/y , Unemployment Claims , Revised Nonfarm Productivity q/q, ISM Non-Manufacturing PMI.	Average Hourly Earnings m/m , Non-Farm Employment Change , Trade Balance , Unemployment Rate.
<b>UK/EURO ZONE</b>	CPI Flash Estimate y/y , Core CPI Flash Estimate y/y, German Retail Sales m/m	Manufacturing PMI , German Unemployment Change , Spanish Manufacturing PMI	Construction PMI, Spanish Unemployment Change , MPC Member Cunliffe Speaks	Halifax HPI m/m , Services PMI,	Retail PMI.
<b>INDIA</b>	Union Budget	Auto sales No , HSBC Manufacturing PMI No	Auto Sales no		

**Narnolia Research Lab**

Stellar IT Park | 5th Floor | Office Space No. 6 | Tower-IInd Plot No. C-25 | Sector-62  
| Noida | Ph : 0120-4215110

**Central Strategy Desk - Kolkata**

124 | 1st Floor | 7/1 Lords Sinha Road | Kolkata - 71  
Ph : 033-22821500 | M : 93347 14418, 98302 69810