

SGX NIFTY : 7650 (7.50 Pt Down)

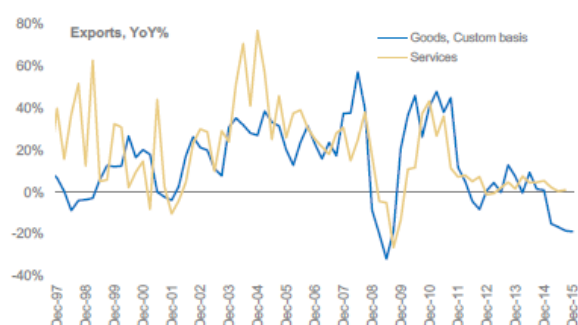
Quote of the Day

"Charlie and I decided long ago that in an investment lifetime it's too hard to make hundreds of smart decisions. That judgment became ever more compelling as Berkshire's capital mushroomed and the universe of investments that could significantly affect our results shrank dramatically. Therefore, we adopted a strategy that required our being smart - and not too smart at that - only a very few times. Indeed, we'll now settle for one good idea a year."

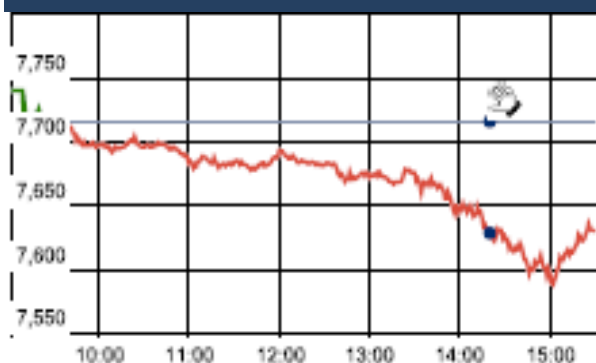
Warren Buffett

Chart of the Day

SERVICE EXPORT TREND



Index Action Nifty (28th Mar 16)



Index

Contents	Page	Coverage
News	2	Update
Economic Calendar	3	Update

Market

Name	Value	Change
Sensex	24,966.40	(371.16)
Nifty	7615.10	(101.40)
DOW	17,535.39	19.66
NASDAQ	4,766.79	(6.72)
CAC	4,329.68	(94.30)
DAX	9,851.35	(171.58)
FTSE	6,106.48	(92.63)
NIKKIE	17,109.58	(24.79)
HANG SENG	20,340.74	(4.87)
EW ALL SHARE	13085.26	(180.57)

Instituional Turnover

FII

Investor	Buy(Cr.)	Sale(Cr.)	Net(Cr.)
28-Mar-16	5346.52	3303.58	2042.94
Mar,16	86328.26	68139.29	18188.97
2016	229465.72	237488.95	(8023.23)

DII

Investor	Buy(Cr.)	Sale(Cr.)	Net(Cr.)
28-Mar-16	1408.82	3903.26	(2494.44)
Mar,16	24361.65	37409.39	(13047.74)
2016	106276.62	94873.59	11403.03

Commodity Price

Commodity/Currencies	Value	
GOLD	28464.00	↓
SILVER	36603.00	↓
CRUDEOIL	39.60	↑
COPPER	332.25	↑
NATURALGAS	129.40	↑
DOLLAR/RS.	66.58	↓
EURO/RS.	74.50	↓
POUND/RS.	94.79	↓

Market Snapshot

Top Price Performers

Top Performers 1D	% Change	Top Performers 1W	% Change	Top Performers 1M	% Change
SHARRESLTD	19.97	HOCL	35.41	DWARKESH	74.88
HOCL	15.60	WEBELSOLAR	32.14	PRAKASHCON	74.69
SURAJLTD	15.47	COMMEXTECH	31.03	SANDUMA	61.39
KSOILS	9.89	SUPREMEINF	30.99	DHARSUGAR	60.90
GANECOS	9.55	THIRUSUGAR	30.59	UPERGANGES	59.42

Worst Performers 1D	% Change	Worst Performers 1W	% Change	Worst Performers 1M	% Change
BIRLACOT	(20.00)	RAINBOWPAP	(34.46)	RAINBOWPAP	(36.72)
RAINBOWPAP	(19.52)	KANANIIND	(22.33)	SHRENUJ	(34.32)
BLBLIMITED	(18.60)	SHREEKRPOL	(21.05)	RUSHIL	(31.57)
ABGSHIP	(15.96)	FARMAXIND	(20.00)	GLOBALCA	(30.82)
GRAVITA	(13.64)	GLOBOFFS	(18.89)	OUTCTYTRVL	(28.46)

Top News

- **NTPC** has added 2,255 MW capacity this fiscal, taking its total electricity generation capability to 46,653 MW. NTPC started the financial year by commissioning all the four units of 200 MW each of Koldam hydro electric project in Himachal Pradesh within a span of 75 days by June 2015. With this project, located on the embankment on the Sutlej river, NTPC made its entry into the hydro power space.

- **L&T Infrastructure Finance Company** plans to raise up to Rs 200 crore through issuance of non-convertible bonds on a private placement basis. The company intends to issue secured, redeemable, non-convertible debentures of the face value of Rs 25 lakh each, amounting to Rs 100 crore with an option to retain over subscription of Rs 100 crore

- **Biocon** 's biosimilar insulin Glargine has received regulatory approval in Japan, where the company will be partnering with FUJIFILM Pharma. This is the first biosimilar that would enter Japan from any non multinational company (MNC). In addition, Japan makes for an interesting market as only three players have this product currently. Glargine offers business worth USD 8-10 billion and realisations from the approval will start kicking in from FY17.

- **IDBI Bank** said that the government insurer Life Insurance Corporation (LIC) has increased its stake from 7.2 percent to over 14 percent via preferential share allotment. This move will effectively bringing down the government's holding in the bank from 80.2 percent to 74 percent. While the initial fund-raising plan intended raising Rs 1,500 crore, the bank will only be able to raise Rs 850 crore for now.

• Reliance Communications

- Extends exclusive discussions for combination of wireless business with Aircel
- Extends exclusivity period with Aircel by 60 days to May 22
- Discussions with Aircel are non-binding in nature

- **ONGC** announced USD 5.07 billion investment in its KG basin oil and gas block but the delay on government's part in approving a higher gas price for difficult areas would mean the output would be delayed by one year to 2019-20. ONGC today announced USD 5.07 billion investment in its KG basin oil and gas block but the delay on government's part in approving a higher gas price for difficult areas would mean the output would be delayed by one year to 2019-20.

- **Zydus Healthcare**, a wholly owned subsidiary of Cadila Healthcare has entered into a definitive agreement to acquire Actibile from Albert David.

- **U.S. core PCE price index** rose to a seasonally adjusted 0.1%, from 0.3% in the preceding month. Analysts had expected U.S. core PCE price index to rise 0.2% last month.

- **U.S. Personal Income** rose to a seasonally adjusted 0.2%, from 0.5% in the preceding month. Analysts had expected U.S. Personal Income to rise 0.1% last month.

- **U.S. personal spending** rose to a seasonally adjusted 0.1%, from 0.1% in the preceding month whose figure was revised down from 0.5%. Analysts had expected personal spending to rise 0.1% last month.

- **U.S. GDP** rose to a seasonally adjusted annual rate of 1.4%, from 1.0% in the preceding quarter. Analysts had expected U.S. gross domestic product to rise 1.0% in the last quarter.

- **French Consumer Confidence fell** to 94, from 95 in the preceding month. Analysts had expected French Consumer Confidence to rise to 96 last month.

- **Malaysian Unemployment Rate** rose to a seasonally adjusted 3.4%, from 3.3% in the preceding month. Analysts had expected Malaysian Unemployment Rate to remain unchanged at 3.3% last month.

Economic Calendar

Country	Monday 28th Mar 16	Tuesday 29th Mar 16	Wednesday 30th Mar 16	Thursday 31st Mar 16	Friday 1st April 16
US	S&P/CS Composite-20 HPI y/y , CB Consumer Confidence , Richmond Manufacturing Index	ADP Non-Farm Employment Change , Crude Oil Inventories .	Unemployment Claims , Chicago PMI, Natural Gas Storage .	Average Hourly Earnings m/m , Non-Farm Employment Change , Unemployment Rate, ISM Manufacturing PMI , Revised UoM Consumer Sentiment .	Labor Market Conditions Index m/m .
UK/EURO ZONE	German Retail Sales m/m , Spanish Flash CPI y/y , German Unemployment Change , M3 Money Supply y/y ,	German Prelim CPI m/m , French Consumer Spending m/m , Italian Monthly Unemployment Rate .	Current Account , Final GDP q/q , Net Lending to Individuals m/m , CPI Flash Estimate y/y , Core CPI Flash Estimate y/y , ECB Monetary Policy Meeting Accounts .	Manufacturing PMI , Unemployment Rate , Italian Manufacturing PMI , French Final Manufacturing PMI , German Final Manufacturing PMI .	Construction PMI , Spanish Unemployment Change , PPI m/m .
INDIA					



(Regn. No. : INP 000004011)

Narnolia Securities Ltd.

Narnolia Research Lab

Stellar IT Park | 5th Floor | Office Space No. 6 | Tower-II/nd Plot No. C-25 | Sector-62 | Noida | Ph : 0120-4215110

Central Strategy Desk - Kolkata

124 | 1st Floor | 7/1 Lords Sinha Road | Kolkata - 71
Ph : 033-22821500 | M : 93347 14418, 98302 69810