

SGX NIFTY : 7880.50 (1.50 Pt Down)

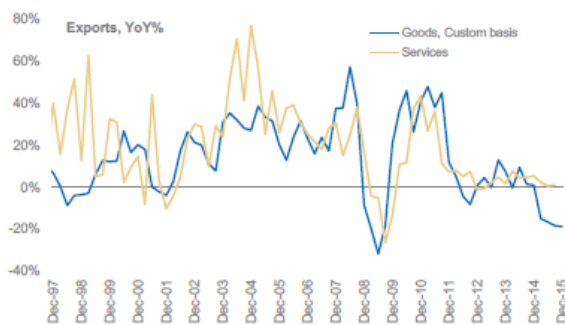
Quote of the Day

"Traditional value investing strategies have worked for years and everyone's known about them. They continue to work because it's hard for people to do, for two main reasons. First, the companies that show up on the screens can be scary and not doing so well, so people find them difficult to buy. Second, there can be one-, two- or three-year periods when a strategy like this doesn't work. Most people aren't capable of sticking it out through that."

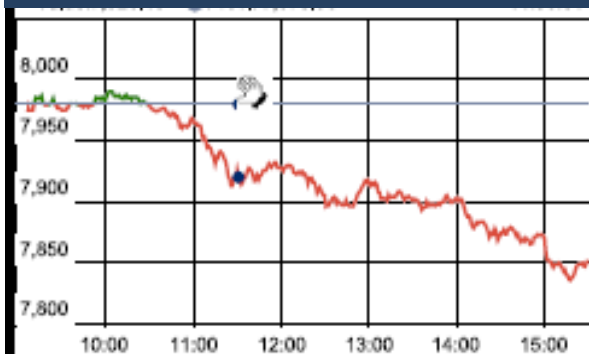
Joel Greenblatt

Chart of the Day

SERVICE EXPORT TREND



Index Action Nifty (28th Apr 16)



Index

Contents	Page	Coverage
News	2	Update
Economic Calendar	3	Update

Market

Name	Value	Change
Sensex	25,603.10	(461.02)
Nifty	7847.25	(132.65)
DOW	18,041.35	51.23
NASDAQ	4,805.29	(57.85)
CAC	4,557.36	(2.04)
DAX	10,321.15	21.32
FTSE	6,322.40	2.49
NIKKEI	16,666.05	(624.44)
HANG SENG	21,126.08	(261.95)
EW ALL SHARE	13805.05	46.92

Instituional Turnover

FII

Investor	Buy(Cr.)	Sale(Cr.)	Net(Cr.)
28-Apr-16	9061.04	8940.41	120.63
Apr,16	86328.26	68139.29	18188.97
2016	229465.72	237488.95	(8023.23)

DII

Investor	Buy(Cr.)	Sale(Cr.)	Net(Cr.)
28-Apr-16	2245.92	2662.13	(416.21)
Apr,16	24361.65	37409.39	(13047.74)
2016	106276.62	94873.59	11403.03

Commodity Price

Commodity/Currencies	Value	
GOLD	29868.00	↑
SILVER	41044.60	↑
CRUDEOIL	45.24	↑
COPPER	331.25	↓
NATURALGAS	139.30	↓
DOLLAR/RS.	66.52	↑
EURO/RS.	75.61	↑
POUND/RS.	97.21	↑

Market Snapshot

Top Price Performers

Top Performers 1D	% Change	Top Performers 1W	% Change	Top Performers 1M	% Change
BIRLACOT	25.00	DIAPOWER	42.23	KIRIINDUS	105.95
JINDRILL	19.94	RAMAPHOSP	33.59	MEGASOFT	89.40
DIAPOWER	19.59	PANCHMSTEL	28.15	KAKATCEM	77.77
CALSREF	16.67	ALCHEM	27.47	UTTAMSUGAR	74.92
DOLPHINOFF	13.83	AMTEKINDIA	27.04	OISL	71.45

Worst Performers 1D	% Change	Worst Performers 1W	% Change	Worst Performers 1M	% Change
SHRENUJ	(9.87)	RAINBOWPAP	(21.70)	VIVIMEDLAB	(77.81)
ALCHEM	(9.26)	SHRENUJ	(20.70)	RAINBOWPAP	(54.77)
DECNGOLD	(8.41)	REMIMETAL	(20.51)	SHRENUJ	(35.23)
EUROCERA	(8.39)	GODFRYPHLP	(19.69)	RICOHQ	(30.78)
HINDNATGLS	(7.57)	TIL	(19.40)	IVRCLINFRA	(26.55)

Top News

- **Dabur India Mgt guideline** : Double-digit revenue growth seems achievable in FY17 but lot depends on revival of inflation and subsequently pricing power in our product categories . While FY17 is seen to be a better year given hope of good monsoons and pick up in rural demand in particular, the company will be able to achieve double-digit revenue growth only in the second half of the year. In the first half, only high single-digit growth can be expected as pricing will be subdued

- **Sadbhav Engineering Mgt guideline** : The first quarter of FY17 is expected to be better than fourth quarter of last financial year. Five projects that were started in last month of Q4 will translate into revenues in Q1 of FY17 . Company expects 15-20 percent revenue growth in FY17 and says that volumes are likely to improve by over 10 percent in the current year.

- **Kajaria Ceramics** , says the company aims for 13 to 14 percent growth in its volumes in the current financial year. The company did better than the guidance it had given for growth in volumes in the last quarter of financial year 2016. It had guided about 10 percent growth in volumes but performed better at 12 percent. Kajaria's margins were at an all time high at 20.5 percent in fourth quarter of financial year 2016. This he attributed to the fall in gas prices.

- **HCL Technologies** saw balanced growth across portfolios .The second half of CY16, as guided earlier, will be robust . The focus is on improving digital and Internet of Things (IoT) segments. To that end, the company has created a strong pipeline . A strong orderbook gives management the confidence of clocking in good growth numbers in the coming quarters. "Inorganic ordebook is very strong,". HCL's booking profile (deals) is in excess of USD 4 billion for this fiscal

- **KPIT**, said that the first half of FY17 may be muted but he expects the company to have industry-level growth in the second half. The apart from the US, Asia and Europe are majorly helping in the manufacturing vertical, internet of things (IoT) and supply chain management businesses. Patil expects KPIT's EBITDA margins to be more than 15 percent in FY17.

- **CEAT Mgt Guideline** : Huge advertisement expenses and a price cut in rubber caused company's operating margins to dip by 130 basis points in the fourth quarter of FY16

Company expects more pressure on EBITDA margins in FY17. The company saw a volume growth of 7 percent in FY16, and Jaiswal added company would double its capacity to about 14-14.5 percent.

- **U.S. Department of Labor** said the number of individuals filing for initial jobless benefits in the week ending April 23 decreased by 9,000 to a seasonally adjusted 257,000 from the previous week's revised total of 248,000.

- **U.S. Department of Labor said the number of individuals** filing for initial jobless benefits last week rose to a seasonally adjusted 257K, from 248K in the preceding week whose figure was revised up from 247K.

- **U.S. GDP rose to a seasonally adjusted** annual rate of 0.5%, from 1.4% in the preceding quarter. Analysts had expected U.S. gross domestic product to rise 0.7% in the last quarter.

- **Japan's industrial output** rose 3.6 percent in March, rebounding from a big drop logged in the prior month . The result compared with the median estimate of a 2.9 percent increase in a Reuters poll of economists.

- **German CPI fell to a seasonally adjusted** -0.2%, from 0.8% in the preceding month. Analysts had expected German CPI to fall -0.2% last month.

- **German unemployment rate remained** unchanged at a seasonally adjusted 6.2%, from 6.2% in the preceding month. Analysts had expected German unemployment rate to remain unchanged at 6.2% last month.

- **Swedish Retail Sales fell to a seasonally adjusted** -0.7%, from 0.1% in the preceding month whose figure was revised up from -0.2%. Analysts had expected Swedish Retail Sales to rise 0.5% last month.

Result Calendar Q4FY16

BSE Code	Company Name	Date	BSE Code	Company Name	Date
530117	ADIFINCHM	29-Apr-16	532504	NAVINFLUOR	30-Apr-16
532331	AJANTPHARM	29-Apr-16	500452	NEPCAGRO	30-Apr-16
524634	ALUFLUOR	29-Apr-16	500301	NEPCMICON	30-Apr-16
532493	ASTRAMICRO	29-Apr-16	531077	NEPCPAPER	30-Apr-16
500027	ATUL	29-Apr-16	521192	NEPCTEX	30-Apr-16
511243	CHOLAFIN	29-Apr-16	539015	ORTEL	30-Apr-16
512127	ETPCORP	29-Apr-16	526349	PARTIND	30-Apr-16
508906	EVERESTIND	29-Apr-16	532735	RSYSTEMINT	30-Apr-16
500033	FORCEMOT	29-Apr-16	513709	SHILGRAVQ	30-Apr-16
511676	GICHSGFIN	29-Apr-16	514454	SOUTLAT	30-Apr-16
502856	GNDHISP	29-Apr-16	530565	SSLFINANCE	30-Apr-16
519126	HNDFDS	29-Apr-16	524204	TEEAI	30-Apr-16
532174	ICICIBANK	29-Apr-16	523868	UBEINDL	30-Apr-16
532659	IDFC	29-Apr-16	526957	UVBOARDS	30-Apr-16
539448	INDIGO	29-Apr-16	534741	VIRTUALG	30-Apr-16
500245	KIRLFER	29-Apr-16	531147	ALICON	02-May-16
523457	LINDEINDIA	29-Apr-16	533029	ALKALI	02-May-16
531642	MARICO	29-Apr-16	538465	AMARSEC	02-May-16
533273	OBEROIRLTY	29-Apr-16	533163	ARSSINFRA	02-May-16
500329	PENTAGRAPH	29-Apr-16	519600	CCL	02-May-16
524632	RELISH	29-Apr-16	532456	COMPUAGE	02-May-16
532983	RPGLIFE	29-Apr-16	533896	FERVENTSYN	02-May-16
500674	SANOFI	29-Apr-16	500010	HDFC	02-May-16
501061	SBBJ	29-Apr-16	524164	IOLCP	02-May-16
505827	SNL	29-Apr-16	533519	L&T;TFH	02-May-16
511218	SRTRANSFIN	29-Apr-16	507912	LKPFIN	02-May-16
512640	STOCKNET	29-Apr-16	500264	MAFATIND	02-May-16
531003	SWRNASE	29-Apr-16	500206	MARGOFIN	02-May-16
504966	TINPLATE	29-Apr-16	500162	PARRYSUGAR	02-May-16
500429	UNIPHOS	29-Apr-16	531172	PRANAVSP	02-May-16
512070	UPL	29-Apr-16	534369	TBZ	02-May-16
534392	VSSL	29-Apr-16	530477	VIKRAMTH	02-May-16
526125	ARHNTTO	30-Apr-16	516072	VISHNU	02-May-16
513729	AROGRANITE	30-Apr-16	532921	ADANIPOINTS	03-May-16
506194	ASL	30-Apr-16	533096	ADANIPOWER	03-May-16
530765	DEVKI	30-Apr-16	522275	ALSTOMT&D	03-May-16
531155	EPSOMPRO	30-Apr-16	500042	BASF	03-May-16
500469	FEDERALBNK	30-Apr-16	509438	BENARAS	03-May-16
524226	GAEL	30-Apr-16	500040	CENTURYTEX	03-May-16
590025	GINNIFILA	30-Apr-16	532443	CERA	03-May-16
532414	IKFTECH	30-Apr-16	531199	GLANCE	03-May-16
500250	LGBBROSLTD	30-Apr-16	532424	GODREJCP	03-May-16
533007	LGBFORGE	30-Apr-16	517077	INDAGIV	03-May-16
530243	MANGASOF	30-Apr-16	538835	INTELLECT	03-May-16
532892	MOTILALOFS	30-Apr-16	511208	IVC	03-May-16
516062	NATPLY	30-Apr-16	509715	JAYSHREETEA	03-May-16
531494	NAVBLDR	30-Apr-16	532621	MORARJEE	03-May-16

500290	MRF	03-May-16	534091	MCX	05-May-16
523558	NETWORK	03-May-16	539767	MNIL	05-May-16
532698	NITINSPIN	03-May-16	532529	NDTV	05-May-16
532481	NOIDATOLL	03-May-16	500730	NOCIL	05-May-16
532690	RAMSARUP	03-May-16	500459	PGHH	05-May-16
534618	SAL	03-May-16	532419	SMARTLINK	05-May-16
539252	SCFL	03-May-16	524727	SPANDIAQ	05-May-16
536666	SFCL	03-May-16	504959	STOVACQ	05-May-16
532638	SHOPERSTOP	03-May-16	533200	TALWALKARS	05-May-16
520086	SICAL	03-May-16	512297	WHELTEX	05-May-16
531863	SIGRUN	03-May-16	590013	XPROINDIA	05-May-16
504973	TUBEINVEST	03-May-16	524208	AARTIIND	06-May-16
532343	TVSMOTOR	03-May-16	590006	AMRUTANJAN	06-May-16
500254	UTTAMVALUE	03-May-16	508933	AYMSYNTEX	06-May-16
532268	ACCELYA	04-May-16	522004	BATLIBOI	06-May-16
512599	ADANIENT	04-May-16	530803	BHAGIL	06-May-16
590122	ASHIKACR	04-May-16	532974	BIRLAMONEY	06-May-16
533138	ASTEC	04-May-16	501833	CHOWGULSTM	06-May-16
513375	CARBORUNIV	04-May-16	520081	ECSTSTL	06-May-16
500280	CENTENKA	04-May-16	517477	ELNET	06-May-16
523100	COSMOFE	04-May-16	539844	EQUITAS	06-May-16
511072	DHFL	04-May-16	531508	EVEREADY	06-May-16
532129	HEXAWARE	04-May-16	532312	GEOMETRIC	06-May-16
509895	HINDMILL	04-May-16	501455	GREAVESCOT	06-May-16
539337	HKT	04-May-16	539083	INOXWIND	06-May-16
524648	INDOAMIN	04-May-16	532162	JKPAPER	06-May-16
504786	INVPRECQ	04-May-16	532642	JSWHL	06-May-16
502157	MANGLMCEM	04-May-16	505890	KENNAMET	06-May-16
504112	NELCO	04-May-16	502420	ORIENTPPR	06-May-16
531209	NUCLEUS	04-May-16	500680	PFIZER	06-May-16
535754	ORIENTCEM	04-May-16	500339	RAIN	06-May-16
533228	SKSMICRO	04-May-16	500550	SIEMENS	06-May-16
532513	TVSELECT	04-May-16	533018	SIMPLXMIL	06-May-16
520113	VESUVIUS	04-May-16	533019	SIMPLXPAP	06-May-16
532953	VGUARD	04-May-16	532872	SPARC	06-May-16
524348	AARTIDRUGS	05-May-16	500114	TITAN	06-May-16
534612	AMTL	05-May-16	505533	WESTLIFE	06-May-16
500870	CASTROLIND	05-May-16	532300	WOCKPHARMA	06-May-16
505200	EICHERMOT	05-May-16	512245	ZNIVITRD	06-May-16
531162	EMAMILTD	05-May-16	500300	GRASIM	07-May-16
500620	GESHIP	05-May-16	524669	HESTERBIO	07-May-16
507815	GILLETTE	05-May-16	524330	JAYAGROGN	07-May-16
533150	GODREJPROP	05-May-16	511632	OLYMTFI	07-May-16
509675	HIL	05-May-16	519091	TASTYBIT	07-May-16
532636	IIFL	05-May-16	512161	8KMILES	09-May-16
511473	INDBANK	05-May-16	506401	DEEPAKNI	09-May-16
523465	INDBNK	05-May-16	526179	LUDLOWJUT	09-May-16
500211	INSILCO	05-May-16	522241	MMFL	09-May-16
500458	KORE	05-May-16	513605	SRIPIPES	09-May-16

532410	TRANSCOR	09-May-16	520057	SONASTEER	13-May-16
532893	VTMLTD	09-May-16	524488	SVCSUPE	13-May-16
505665	ABCBEAR	10-May-16	533170	TAMBOLI	13-May-16
517041	ADORWELD	10-May-16	534742	ZUARI	13-May-16
532548	CENTURYPLY	10-May-16	500780	ZUARIGLOB	13-May-16
511728	KZLFIN	10-May-16	532166	ALKASEC	14-May-16
521018	MARALOVER	10-May-16	530829	CILSEC	14-May-16
523828	MENONBE	10-May-16	526821	DAICHI	14-May-16
503229	SIMPLXREA	10-May-16	532133	IFGLREFRAC	14-May-16
500472	SKFINDIA	10-May-16	590130	KANCOTE	14-May-16
505192	SMLISUZU	10-May-16	530443	KIRANSY-B	14-May-16
539353	SWARAJAUTO	10-May-16	504398	SJCORP	14-May-16
532812	TFL	10-May-16	523628	PODDAR	16-May-16
509055	VISAKAIND	10-May-16	532725	SOLARINDS	16-May-16
500877	APOLLOTYRE	11-May-16	517334	MOTHERSUMI	17-May-16
500820	ASIANPAINT	11-May-16	500337	PRIMESECU	17-May-16
514045	BSL	11-May-16	517562	TRIGYN	17-May-16
500085	CHAMBLFERT	11-May-16	500228	JSWSTEEL	18-May-16
519588	DFM	11-May-16	501423	SHAILY	18-May-16
517354	HAVELLS	11-May-16	524212	WANBURY	18-May-16
500247	KOTAKBANK	11-May-16	532173	CYBERTECH	19-May-16
509220	PTL	11-May-16	532526	DISHMAN	19-May-16
539678	QUICKHEAL	11-May-16	500133	ESABINDIA	19-May-16
500350	RSWM	11-May-16	505750	JOSTS	19-May-16
532218	SOUTHBANK	11-May-16	524037	RAMAPHO	19-May-16
533553	TDPOWERSYS	11-May-16	532988	RANEENGINE	19-May-16
514142	TTL	11-May-16	531088	TULIPSTA	19-May-16
503960	BBL	12-May-16	533023	WABCOINDIA	19-May-16
500124	DRREDDY*	12-May-16	513117	AMFORG	20-May-16
532809	FSL	12-May-16	500038	BALRAMCHIN	20-May-16
509488	GRAPHITE	12-May-16	500825	BRITANNIA	20-May-16
500189	HINDUJAVEN	12-May-16	590043	HARITASEAT	20-May-16
523207	KOKUYOCLN	12-May-16	505737	INTLCOMBQ	20-May-16
531213	MANAPPURAM	12-May-16	506943	JBCHEPHARM	20-May-16
500126	MERCK	12-May-16	532652	KTKBANK	20-May-16
500790	NESTLEIND	12-May-16	517344	MINDTECK	20-May-16
520056	SUNCLAYLTD	12-May-16	524558	NEULANLAB	20-May-16
521064	TRIDENT	12-May-16	500260	RAMCOCEM	20-May-16
531846	TRINITYLEA	12-May-16	532369	RAMCOIND	20-May-16
531335	ZYDUSWELL	12-May-16	532661	RML	20-May-16
526955	ABLBIO	13-May-16	500403	SUNDRMFAST	20-May-16
532321	CADILAHC	13-May-16	522113	TIMKEN	20-May-16
526483	EDUEXEL	13-May-16	506690	UNICHEMLAB	20-May-16
533177	IL&FSTRANS	13-May-16	526775	VALIANT	20-May-16
524378	JMDEPACKR	13-May-16	533470	RUSHIL	21-May-16
523405	JMFINANCIL	13-May-16	521240	SAMBANDAM	21-May-16
526947	LAOPALA	13-May-16	519552	HERITGFOOD	23-May-16
532340	OMNIAX	13-May-16	500266	MAHSCOOPER	23-May-16
506590	PHILIPCARB	13-May-16	532987	RBL	23-May-16

521234	SRINACHA	23-May-16	522261	DOLPHINOFF	27-May-16
532978	BAJAFINSV	24-May-16	507794	KHAICHEM	27-May-16
500034	BAJFINANCE	24-May-16	523248	MACPLASQ	27-May-16
523736	DPL	24-May-16	531049	NEELKAN	27-May-16
500170	GTNINDS	24-May-16	500346	PUNJCOMMU	27-May-16
523642	PIIND	24-May-16	505800	RANEHOLDIN	27-May-16
519230	RICHIRICH	24-May-16	506655	SUDARSCEM	27-May-16
590072	SUNDRMBRAK	24-May-16	506685	ULTRAMAR	27-May-16
519174	ASHAI	25-May-16	519500	BKV	28-May-16
506820	ASTRAZEN	25-May-16	508939	BLCISER	28-May-16
532977	BAJAJ-AUTO	25-May-16	530859	COSBOARD	28-May-16
500490	BAJAJHLDNG	25-May-16	538319	GCMCAPI	28-May-16
500660	GLAXO	25-May-16	500202	INDLEASE	28-May-16
500164	GODREJIND	25-May-16	511092	JMDTELEFILM	28-May-16
533217	HMVL	25-May-16	506079	LAKPRE	28-May-16
500252	LAXMIMACH	25-May-16	517449	MAGNAELQ	28-May-16
532777	NAUKRI	25-May-16	501343	MOTOGENFIN	28-May-16
500338	PRISMCEM	25-May-16	530557	NCLRESE	28-May-16
530073	SANGHVIMOV	25-May-16	533202	NITESHEST	28-May-16
519234	SIEL	25-May-16	524038	VENLONENT	28-May-16
526827	SPICEISL	25-May-16	509038	VOLLF	28-May-16
533158	THANGAMAYL	25-May-16	531047	ADVPOWER	30-May-16
532515	TVTODAY	25-May-16	509480	BERGEPAIN	30-May-16
523319	BALMLAWRIE	26-May-16	531175	BLSINFOTE	30-May-16
514440	BPTX	26-May-16	500067	BLUESTARCO	30-May-16
534804	CARERATING	26-May-16	531458	BOSTONBIO	30-May-16
500144	FINCABLES	26-May-16	539131	CLLIMITED	30-May-16
517300	GIPCL	26-May-16	507833	COMPUPN	30-May-16
532662	HTMEDIA	26-May-16	531270	DAZZEL	30-May-16
539276	KAYA	26-May-16	531306	DHPIND	30-May-16
526299	MPHASIS	26-May-16	535917	GCMCOMM	30-May-16
500387	SHREECEM	26-May-16	535431	GCMSECU	30-May-16
531652	THIRDFIN	26-May-16	530263	GLOBALCA	30-May-16
500414	TIMEX	26-May-16	531608	GORANIN	30-May-16
509910	ZSOUTGAS	26-May-16	531737	GREENCREST	30-May-16
500103	BHEL	27-May-16	511543	GSBFIN	30-May-16
506315	BORAX	27-May-16	514386	GUJCOTEX	30-May-16
532783	DAAWAT	27-May-16	524754	GUJMEDI	30-May-16
506405	DHARAMSI	27-May-16	526779	HINAFIL	30-May-16

532851	INSECTICID	30-May-16	514332	NEOINFRA	30-May-16
538422	JACKSON	30-May-16	531779	PADALPO	30-May-16
526558	JAMEHOT	30-May-16	535514	PRIMECAPM	30-May-16
530405	JINDCAP	30-May-16	530125	SAMRATPH	30-May-16
535730	KHOBSURAT	30-May-16	526532	SFPIL	30-May-16
524280	KOPRAN	30-May-16	531411	TUNITEX	30-May-16
539446	KRISHFAB	30-May-16	521226	UNIROYAL	30-May-16
531164	LADIAMO	30-May-16	531831	UNISH	30-May-16
506113	LIFELINE	30-May-16	531762	UNJHAFOR	30-May-16
531319	MARUTISE	30-May-16	539123	VBIND	30-May-16
523197	MAZDAPR	30-May-16	530401	VINYOFL	30-May-16
526251	MIDEASTP	30-May-16	511690	WARNER	30-May-16
			516030	YASHPPR	30-Jul-16

EARNING ESTIMATE Q4FY16

BSE Code	Company Name	SALES (Cr.)	SALES Growth	PAT (Cr.)	PAT Growth
500086	EXIDEIND	1546.1	(6.00)	129.5	(5.90)
532500	MARUTI	14529.7	6.60	1207.4	(6.00)
500002	ABB	1880	3.60	76	40.00
500410	ACC	2985	3.50	213.9	(14.30)
500425	AMBUJACEM	2485.3	2.50	303.5	(4.50)
532538	ULTRACEMCO	6398.8	4.20	572	(7.00)
500096	DABUR	2103.6	8.20	305	7.10
533573	APLLTD	806.2	60.70	178.7	154.00
532523	BIOCON	870.8	4.90	105.5	(47.60)
500674	SANOFI	550	12.50	63.2	30.60
500295	VEDL	15679.9	(11.90)	422.3	(42.20)
532832	IBREALEST	640	7.70	61.4	(34.10)
532313	MAHLIFE	230.1	(11.20)	28.2	(8.00)
532281	HCLTECH	10854.4	17.10	1872.8	11.20
532400	KPIT	842.4	10.40	81.1	61.20
500408	TATAELXSI	289.1	25.00	39.3	31.80
532454	BHARTIARTL	24795.8	7.70	985.6	(21.50)
534816	INFRATEL	3120.3	5.90	619.9	11.20
532822	IDEA	9469.8	12.40	507.1	(46.20)
506395	COROMANDEL	2862.7	(4.50)	90.1	31.30
532622	GDL	265.6	0.20	30.8	(36.80)
532706	INOXLEISUR	243.9	12.00	-6.9	Loss
539448	INDIGO	4131.5	8.10	513.7	0.20
512070	UPL	3962.4	9.30	510.5	13.00
532215	AXISBANK	4212.2	10.90	2376.7	9.00
500469	FEDERALBNK	596.4	(4.30)	193.4	(31.10)
532174	ICICIBANK	5503.7	8.40	2926.5	0.20
532648	YESBANK	1218.8	24.70	698.2	26.70
535789	IBULHSGFIN	879.3	9.00	657.7	19.40
511218	SRTRANSFIN	1364.5	25.70	279.6	(11.70)

RESULT Q4FY16

BSE Code	Company Name	SALES (Cr.)	SALES Growth	PAT (Cr.)	PAT Growth
500670	G N F C	1308.31	99.09	9.68	(130.42)
500002	A B B	1976.29	70.98	10.72	30.74
513010	Tata Sponge Iron	140.37	12.81	(12.19)	49.47
500249	KSB Pumps	208.57	15.45	10.84	141.03
500355	Rallis India	341.99	32.25	8.62	51.27
500330	Raymond	1511.35	56.22	7.93	161.85
509930	Supreme Inds.	1191.42	114.56	4.17	12.06
522134	Artson Engg.	31.96	2.03	131.76	(531.91)
526227	Filatex India	348.57	13.55	29.61	364.04
511505	Capital Trust	16.68	6.17	63.37	118.02
511736	Ushdev Intl.	1774.88	(48.26)	(45.18)	(183.11)
526899	Himalya Intl.	23.91	(7.96)	1.96	(63.30)
533167	Coromandel Engg.	8.23	(1.95)	(93.40)	(111.17)
531595	Capri Global	44.41	0.00	1.86	(100.00)
532523	Biocon	970.30	360.90	16.85	79.11
532313	Mahindra Life.	109.55	22.63	(16.69)	(0.57)
532775	GTL Infra.	155.86	(92.75)	0.23	(7.45)
532832	Indbull.RealEst.	617.69	58.91	4.49	(36.74)
533402	Innoventive Ind.	90.95	(41.63)	12.24	140.91
534816	Bharti Infra.	1419.40	371.30	6.14	(48.24)
532710	SADBHAV	857.79	40.68	(11.33)	4.66
500410	ACC	2990.00	232.19	3.62	(1.84)
505412	WENDT	34.66	1.51	5.86	(65.84)
500185	HCC	1196.00	19.14	6.74	(7.31)
500295	VEDL	15979.00	955.44	(9.89)	(104.97)

Economic Calendar

Country	Monday 25th April 16	Tuesday 26th April 16	Wednesday 27th April 16	Thursday 28th April 16	Friday 29th April 16
US	Core Durable Goods Orders m/m , Durable Goods Orders m/m , New Home Sales .	S&P/CS Composite-20 HPI y/y , CB Consumer Confidence , Richmond Manufacturing Index .	Goods Trade Balance , Pending Home Sales m/m , Crude Oil Inventories , FOMC Statement, Federal Funds Rate .	Advance GDP q/q , Unemployment Claims , Advance GDP Price Index q/q , Natural Gas Storage .	Core PCE Price Index m/m , Employment Cost Index q/q , Personal Spending m/m , Personal Income m/m , Chicago PMI , Revised UoM Consumer Sentiment , Revised UoM Inflation Expectations
UK/EURO ZONE	Nationwide HPI m/m , BBA Mortgage Approvals.	German Import Prices m/m	French Consumer Spending m/m , M3 Money Supply y/y, Private Loans y/y , Prelim GDP q/q , Index of Services 3m/3m .	German Prelim CPI m/m , German Unemployment Change, Italian Monthly Unemployment Rate , Italian Prelim CPI m/m .	German Prelim CPI m/m , German Unemployment Change, Italian Monthly Unemployment Rate , Italian Prelim CPI m/m .
INDIA					



(Regn. No. : INP 000004011)

Narnolia Securities Ltd.

Narnolia Research Lab

Stellar IT Park | 5th Floor | Office Space No. 6 | Tower-IIInd Plot No. C-25 | Sector-62 | Noida | Ph : 0120-4215110

Narnolia Securities Ltd.

201 | 2nd Floor | Marble Arch Building | 236B-AJC Bose Road Kolkata-700 020 Ph : 033-40501500
Email : narnolia@narnolia.com website :www.narnolia.com