

SGX NIFTY : 8602 (25 Pt Down)

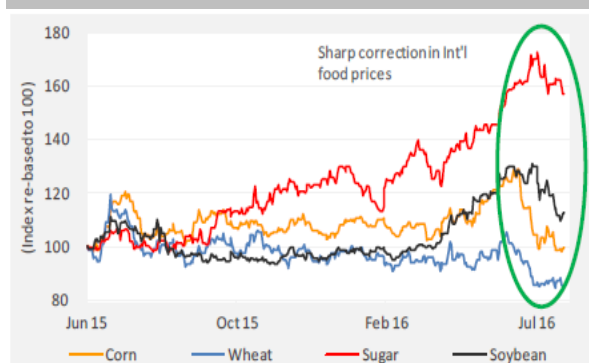
Quote of the Day

"Abnormally good or abnormally bad conditions do not last forever. This is true not only of general business but of particular industries as well. Corrective forces are often set in motion which tend to restore profits where they have disappeared, or to reduce them where they are excessive in relation to capital."

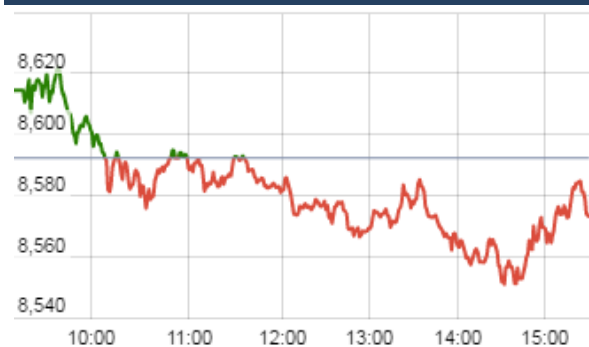
Benjamin Graham

Chart of the Day

FOOD Inflation Trend



Index Action Nifty (26th Aug 16)



Index

Contents	Page	Coverage
News	2	Update
Economic Calendar	3	Update

Market

Name	Value	Change
Sensex	27,782.25	(53.66)
Nifty	8572.55	(19.65)
DOW	18,395.40	(53.01)
NASDAQ	5,218.92	6.72
CAC	4,441.87	35.26
DAX	10,587.77	58.18
FTSE	6,838.05	21.15
NIKKEI	16,723.44	362.73
HANG SENG	22,790.57	(118.97)
EW ALL SHARE	15344.08	(62.91)

Instituional Turnover

FII

Investor	Buy(Cr.)	Sale(Cr.)	Net(Cr.)
26-Aug-16	3110.76	2769.41	341.35
Aug,16	60193.17	53147.65	7045.52
2016	657474.78	635137.03	22337.75

DII

Investor	Buy(Cr.)	Sale(Cr.)	Net(Cr.)
26-Aug-16	1734.67	2001.10	(266.43)
Aug,16	22658.96	27613.73	(4954.77)
2016	271990.29	272221.06	(230.77)

Commodity Price

Commodity/Currencies	Value	
GOLD	30990.00	↑
SILVER	43977.00	↑
CRUDEOIL	47.05	↑
COPPER	319.00	↑
NATURALGAS	197.80	↑
DOLLAR/RS.	67.06	↑
EURO/RS.	75.17	↑
POUND/RS.	88.06	↓

Market Snapshot

Top Price Performers

Top Performers 1D	% Change	Top Performers 1W	% Change	Top Performers 1M	% Change
OILCOUNTUB	19.85	V2RETAIL	48.54	APTECHT	82.46
BPL	19.83	BFLYGANDHI	44.57	PRAKASHCON	75.42
DONEAR	19.73	DONEAR	37.70	PRIMEPRO	66.58
AROGRANITE	15.31	BPL	32.30	ELECTHERM	61.70
REMIMETAL	14.37	JBMA	31.44	MANDHANA	61.02

Worst Performers 1D	% Change	Worst Performers 1W	% Change	Worst Performers 1M	% Change
BIRLACOT	(12.50)	WELSPUNIND	(51.68)	WELSPUNIND	(51.35)
ATLANTA	(9.89)	PFC	(51.24)	PFC	(47.08)
RESTILE	(9.01)	TCI	(39.11)	UGARSUGAR	(44.44)
SATRAPROP	(8.96)	BIRLACOT	(22.22)	DCMSRMIND	(44.44)
WELSPUNIND	(8.64)	USHAMART	(17.81)	DHARSUGAR	(43.47)

Top News

• **PNC Infratech Mgt Guideline** : In this qtr EBITDA margin increased by 50% due to lower financial cost and lesser tax expenses and increase in other income. Company is expecting EBITDA margin from 13-14 percent in this year also.

Current order book is Rs 6300 crore and Company is expecting some good project in northern state and at the end of this financial year and order book will be around Rs 8,000 crore.

Company is not in plan to sell any BOT project presently.

• **Carborundum Universal Mgt Guideline** : The demand pick up is significantly better in this fiscal and the company's capacity utilisation is also scaling up, which is expected to be around 80 percent for the second quarter . There is a boost in demand from international geographies as well

• **Mukta Arts Mgt Guideline** : Company is is set expand its multiplex business and aims to have 100 screens by the end of this fiscal. Company expects the company to turn profitable by the end of this year.

• Mgt Int : DHFL

Expect 100 bps improvement in cost of funds: DHFL

The company's focus has been on improving its cost of funds and expects a 15-25 basis points (bps) improvement for the same in the short term.

On the issue of NCDs he said that DHFL plans to borrow from areas other than banks and intends to bring its bank borrowings to 30-35 percent.

• **Claris Life** -US FDA visited plant 1 of Vasana manufacturing facility of unit Claris injectables on August 16-26

-Company has received 5 483s during the US FDA inspection -Confident can reply with corrective & preventive measures in 15 working days

• **Neuland Laboratories** board approves proposal to merge Neuland Health Sciences Private Limited (holding company) and Neuland Pharma Research Private Limited (subsidiary of the holding company) with company

• **JSW Mgt Guideline** : The company is looking at buying power assets only in India as of now and is not looking at Tata Steel UK assets.

With regards to iron ore imports, company said fortunately now enough capacity is being developed in the country and so, the country we will import very little iron ore, in fact in time they would be net exporter of iron ore.

The steel industry is standing on its feet now and the impact of anti-dumping duty may come in the long-term. Short-term too there are signs of imports slowing down

• **Time Technoplast Mgt Guideline** : Company aims to double its revenue in the next five years and company plans to do so by first reducing its debt to Rs 430 crore from present Rs 700 crore

The company's volume growth has been more than 13 percent in the first quarter of this fiscal and expects it to be in the excess of 10 percent for the year.

• **Japan's CSPI** rose to a seasonally adjusted annual rate of 0.4%, from 0.2% in the preceding month. Analysts had expected Japan's CSPI to fall to 0.1% last month.

• **U.S. consumer sentiment** fell to a seasonally adjusted 89.8, from 90.4 in the preceding month . Analysts had expected UoM consumer sentiment to rise to 90.6 last month.

• **U.S. GDP** rose to a seasonally adjusted annual rate of 1.1%, from 1.2% in the preceding quarter. Analysts had expected U.S. gross domestic product to rise 1.1% in the last quarter.

• **U.K. Index of Services** rose to 0.5%, from 0.3% in the preceding month. Analysts had expected U.K. Index of Services to rise 0.4% last month.

Result Calendar Q1FY17

BSE Code	Company Name	Result Date	BSE Code	Company Name	Result Date
500128	ELECTCAST	27-Aug-16	506525	KANORICHEM	31-Aug-16
532240	INDNIPPON	27-Aug-16	517518	LLOYDELENG	31-Aug-16
500207	INDORAMA	27-Aug-16	534091	MCX	31-Aug-16
520111	RATNAMANI	27-Aug-16	539302	POWERMECH	31-Aug-16
521206	SAMTEX	27-Aug-16	539346	SADBHIN	31-Aug-16
513414	SMPL	27-Aug-16	507458	UBHOLDINGS	31-Aug-16
517224	SUJANAUNI	27-Aug-16	508869	APOLLOHOSP	01-Sep-16
526961	TRANSFIN	27-Aug-16	500102	BALLARPUR	01-Sep-16
511431	VAKRANGEE	27-Aug-16	500547	BPCL	01-Sep-16
533271	ASHOKA	29-Aug-16	500135	ESSELPRO	01-Sep-16
500041	BANARISUG	29-Aug-16	532515	TVTODAY	01-Sep-16
532868	DLF	29-Aug-16	532804	TIIL	02-Sep-16
532927	ECLERX	29-Aug-16	533155	JUBLFOOD	03-Sep-16
532181	GMDCLTD	29-Aug-16	500109	MRPL	03-Sep-16
530965	IOC	29-Aug-16	502995	MALWACOTT	05-Sep-16
533286	MOIL	29-Aug-16	500110	CHENNPETRO	07-Sep-16
519136	NAHARINDUS	29-Aug-16	500117	DCW	07-Sep-16
506022	PRAKASH	29-Aug-16	506166	APIS	08-Sep-16
524230	RCF	29-Aug-16	534742	ZUARI	08-Sep-16
532731	ROHITFERRO	29-Aug-16	500780	ZUARIGLOB	08-Sep-16
513605	SRIPIPES	29-Aug-16	522113	TIMKEN	09-Sep-16
531088	TULIPSTA	29-Aug-16	534742	ZUARI	09-Sep-16
533144	COX&KINGS	30-Aug-16	500780	ZUARIGLOB	09-Sep-16
500168	GOODYEAR	30-Aug-16	515145	HINDNATGLS	12-Sep-16
532150	INDRAMEDCO	30-Aug-16	533177	IL&FSTRANS	13-Sep-16
500238	WHIRLPOOL	30-Aug-16	500108	MTNL	13-Sep-16
535755	ABFRL	31-Aug-16	523716	ASHIANA	14-Sep-16
500013	ANSALAPI	31-Aug-16	531882	KWALITY	14-Sep-16
532708	GVKPIL	31-Aug-16	520155	STARLOG	14-Sep-16
506945	IGLFXPL-B	31-Aug-16	524038	VENLONENT	28-Oct-16

Economic Calendar

Country	Monday 29th Aug 16	Tuesday 30th Aug 16	Wednesday 31th Aug 16	Thursday 1st Sept 16	Friday 2nd Sept 16
US	Core PCE Price Index m/m ,Personal Spending m/m , Personal Income m/m	&P/CS Composite-20 HPI y/y , CB Consumer Confidence.	ADP Non-Farm Employment Change , Chicago PMI , Pending Home Sales m/m.	Revised Nonfarm Productivity q/q , ISM Manufacturing PMI , Construction Spending m/m.	Average Hourly Earnings m/m , Non-Farm Employment Change , Unemployment Rate.
UK/EURO ZONE		German Prelim CPI m/m ,German Import Prices m/m , Spanish Flash CPI y/y.	German Unemployment Change , Italian Monthly Unemployment Rate , CPI Flash Estimate y/y.	Spanish Manufacturing PMI , Manufacturing PMI , Manufacturing PMI ,	Construction PMI , Spanish Unemployment Change ,
INDIA				Auto No	



(Regn. No. : INP 000004011)

Narnolia Securities Ltd.

Narnolia Research Lab

Stellar IT Park | 5th Floor | Office Space No. 6 | Tower-IIInd Plot No. C-25 | Sector-62 | Noida | Ph : 0120-4215110

Narnolia Securities Ltd.

201 | 2nd Floor | Marble Arch Building | 236B-AJC Bose Road Kolkata-700 020 Ph : 033-40501500

Email : narnolia@narnolia.com website :www.narnolia.com