

SGX NIFTY : 8156 (7 Pt Up)

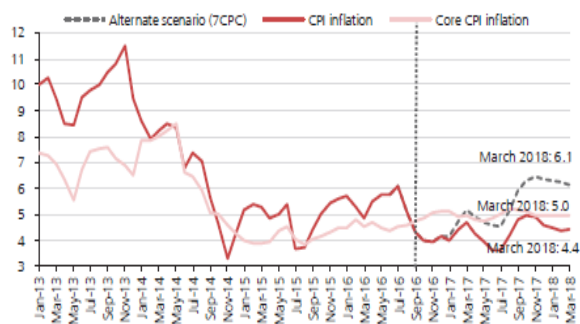
Quote of the Day

"Surprise and shock are endemic to the system, and people should always arrange their affairs so that they will survive such events. They will end up richer that way than focusing all the time on getting rich."

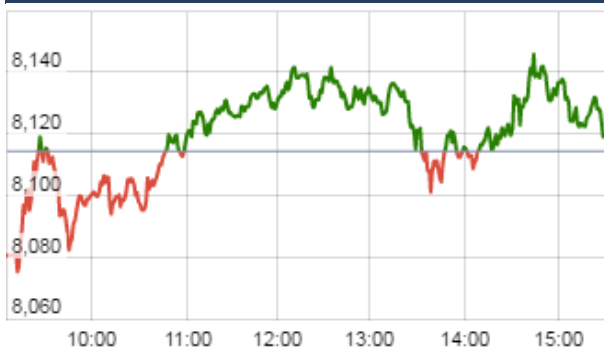
Peter Bernstein

Chart of the Day

CPI Trend



Index Action Nifty (28th Nov 16)



Index

Contents	Page	Coverage
News	2	Update
Economic Calendar	3	Update

Market

Name	Value	Change
Sensex	26,350.17	33.83
Nifty	8126.90	12.60
DOW	19,097.98	(54.24)
NASDAQ	5,363.81	(30.11)
CAC	4,510.39	(39.88)
DAX	10,582.67	(116.60)
FTSE	6,799.47	(41.28)
NIKKIE	18,306.89	(50.23)
HANG SENG	22,857.00	26.99
EW ALL SHARE	14697.75	80.33

Instituional Turnover

FII

Investor	Buy(Cr.)	Sale(Cr.)	Net(Cr.)
28-Nov-16	3960.46	5396.86	(1436.40)
Nov,16	91611.26	110443.91	(18832.65)
2016	975581.69	972016.86	3564.83

DII

Investor	Buy(Cr.)	Sale(Cr.)	Net(Cr.)
28-Nov-16	2494.85	1261.06	1233.79
Nov,16	61213.92	44147.82	17066.10
2016	452855.09	425072.96	27782.13

Commodity Price

Commodity/Currencies	Value	
GOLD	28736.00	↑
SILVER	40672.00	↑
CRUDEOIL	46.96	↑
COPPER	400.65	↓
NATURALGAS	230.10	↑
DOLLAR/RS.	68.76	↑
EURO/RS.	72.66	↑
POUND/RS.	85.15	↓

Market Snapshot

Top Price Performers

Top Performers 1D	% Change	Top Performers 1W	% Change	Top Performers 1M	% Change
GMBREW	19.99	TVSELECT	61.40	KARURVYSYA	72.54
TVSELECT	19.98	MCDHOLDING	56.86	ANDHRAPET	48.05
EDL	19.96	MEGASOFT	43.77	SWANENERGY	40.63
PIRLIFE	19.95	AHMEDFORGE	39.25	METKORE	40.55
GLOBUSSPR	19.95	SOMDIST	37.94	MBSWITCH	38.91

Worst Performers 1D	% Change	Worst Performers 1W	% Change	Worst Performers 1M	% Change
SATIN	(7.86)	ENERGYDEV	(18.03)	ENERGYDEV	(69.03)
SUDARSCHEM	(7.18)	PRAKASHCON	(17.45)	PRAKASHCON	(65.45)
VLSFINANCE	(6.96)	USHDEVINT	(15.41)	SUNILHITEC	(57.00)
SOTL	(5.85)	MANJEERA	(13.24)	SIGNET	(41.30)
ONWARDTEC	(5.82)	ADINATHBI	(12.00)	GEMINI	(39.64)

Top News

• **Entertainment Network India Mgt Guideline** : Company said that impact has been severe. The hit on revenues has been around 10 percent,

The media industry is expecting a turbulent December. Mgt also added that weakness in media is less because most advertisers are looking at it as a temporary phenomenon. They are re-diverting the money. They haven't pulled the plug yet

Retail segments like jewellery, real estate and jewellery account for 15 percent of radio's revenues which has gone down to nothing

National advertisers like car and two-wheelers and FMCG companies have put their campaigns on hold

Elections will be beneficial for radio

• **Borosil Glass Mgt Guideline** : Company said that the impact of demonetisation will be felt in the third quarter of this fiscal as tertiary sales have come down by 30-40 percent despite primary sales not wavering much

The company will maintain its margin going forward but growth is likely to slowdown.

The company will double its advertisement expenditure as advertising space is now available at cheaper rates.

• **Balaji Telefilms Mgt Guideline** : The new shows have a much lower margin. Company is hoping to have 10 shows on air by FY17 end.

TV business gross margin is likely to be up 25 percent by this fiscal year, The plan now is to get next releases of movies in the next fiscal year.

Film business will likely book profit in FY18.

Balaji Telefilms will look to air new shows on Sony, Sun TV and Doordarshan.

• Mgt Int : FEDERALBANK

SMEs to benefit in the long term with digitisation: Federal Bank

There will be good availability of liquidity and digitisation of the banking sector will lead to behavioral and client changes.

In the long-term small-medium enterprises (SMEs) will benefit as most transactions will be formally captured.

The bank has calibrated all ATMs to incorporate Rs 2,000 notes and more than 50 percent ATMs are calibrated for the new Rs 500 notes.

• **Suzlon Group** has bagged an over 50 MW wind power project in Anantapur, Andhra Pradesh . The project consists of 24 units of S95 90m tubular tower with rated capacity of 2.1 MW . Located at Anantapur, Andhra Pradesh, the project is scheduled for completion in March 2017. This order win takes the current year's total order portfolio with the business house to 84 MW, out of which 33.60 MW was announced earlier as a part of order wins from SMEs

• **Idea Cellular** plans to sell 100% in tower arm for \$1 bn. Idea Cellular has put on block 100 percent stake in its tower arm, dropping its earlier plans to sell a minority stake in the business. They say the company is looking to sell 11,000 telecom towers for close to USD 1 billion.

• **Tata Steel** has signed a letter of intent with Liberty House to sell its UK speciality steel business. The deal, which also covers several South-Yorkshire based assets, is being pegged at an enterprise value of £100 million.

• **China's trade deficit in services** narrowed to \$20.9 billion in October from \$23.3 billion in September. In the January-October period, the trade deficit in services was \$208.6 billion.

• **Norwegian Retail Sales** rose to a seasonally adjusted annual rate of 0.9%, from -0.3% in the preceding month. Analysts had expected Norwegian Retail Sales to rise 0.4% last month.

• **Mexican Trade Balance** rose to a seasonally adjusted -0.900B, from -1.608B in the preceding month. Analysts had expected Mexican Trade Balance to fall to -1.700B last month.

• **U.S. Wholesale Inventories** fell to a seasonally adjusted annual rate of -0.4%, from 0.2% in the preceding quarter whose figure was revised up from 0.1%. Analysts had expected U.S. Wholesale Inventories to rise 0.3% in the last quarter.

Result Calendar Q2FY17

BSE Code	Company Name	Date	BSE Code	Company Name	Date
506525	KANORICHEM	29-Nov-16	532515	TVTODAY	02-Dec-16
523630	NFL	29-Nov-16	523890	DSKULKARNI	03-Dec-16
500400	TATAPOWER	29-Nov-16	523574	FEL	03-Dec-16
531426	TNPL	29-Nov-16	532924	KOLTEPATIL	03-Dec-16
524212	WANBURY	29-Nov-16	500459	PGHH	03-Dec-16
502355	BALKRISIND	30-Nov-16	532904	SUPREMEINF	03-Dec-16
532708	GVKPIL	30-Nov-16	500023	ASIANHOTNR	05-Dec-16
533169	MANINFRA	30-Nov-16	500830	COLPAL	05-Dec-16
532693	PUNJLLOYD	30-Nov-16	532051	SWELECTES	05-Dec-16
520111	RATNAMANI	30-Nov-16	500013	ANSALAPI	07-Dec-16
537119	TENTIMETAL	30-Nov-16	523638	IPRINGLTD	07-Dec-16
533292	AZZINFRA	01-Dec-16	533274	PRESTIGE	07-Dec-16
506390	CLNINDIA	01-Dec-16	532786	GTOFFSHORE	08-Dec-16
540047	DBL	01-Dec-16	500113	SAIL	08-Dec-16
507815	GILLETTE	01-Dec-16	517300	GIPCL	09-Dec-16
509488	GRAPHITE	01-Dec-16	590072	SUNDRMBRAK	10-Dec-16
532702	GSPL	01-Dec-16	500093	CROMPGREAV	12-Dec-16
531363	KARURKCP	01-Dec-16	532181	GMDCLTD	12-Dec-16
505509	RESPONIND	01-Dec-16	512237	JAICORPLTD	12-Dec-16
513605	SRIPIPES	01-Dec-16	531882	KWALITY	12-Dec-16
533271	ASHOKA	02-Dec-16	539126	MEP	12-Dec-16
532930	BGREENERGY	02-Dec-16	521070	ALOKTEXT	13-Dec-16
523618	DREDGECORP	02-Dec-16	533278	COALINDIA	13-Dec-16
540153	ENDURANCE	02-Dec-16	513599	HINDCOPPER	13-Dec-16
532957	GOKAKTEX	02-Dec-16	526622	MFLINDIA	13-Dec-16
509073	HATHWAYB	02-Dec-16	500338	PRISMCEM	13-Dec-16
533177	IL&FSTRANS	02-Dec-16	533152	MBLINFRA	14-Dec-16
500201	INDIAGLYCO	02-Dec-16	500108	MTNL	14-Dec-16
539917	NAGARFERT	02-Dec-16	509243	TVSSRICHAK	14-Dec-16
532780	PARSVNATH	02-Dec-16	524038	VENLONENT	31-Jan-17
539302	POWERMECH	02-Dec-16			

Earning Estimate Q2FY17

BSE CODE	NSE CODE	Sales Rs Cr	Sales YoY	Pat Rs Cr	PAT YoY
500830	COLPAL	1072.60	13.00	172.30	11.80
500459	PGHH	706.30	18.00	102.70	47.10
500093	CROMPGREAV	1363.00	(39.90)	29.30	LP
500113	SAIL	9657.90	4.30	(1219.00)	Loss
533106	OIL	2274.00	(5.20)	559.20	(17.10)
533274	PRESTIGE	1094.20	(9.10)	169.70	68.50
533278	COALINDIA	1618.99	(4.50)	127.61	(49.30)

Economic Calendar					
Country	Monday 28th Nov 16	Tuesday 29th Nov 16	Wednesday 30th Nov 16	Thursday 1st Dec 16	Friday 2nd Dec 16
US		Prelim GDP q/q , CB Consumer Confidence , Richmond Manufacturing Index , Prelim GDP Price Index q/q , S&P/CS Composite-20 HPI y/y .	ADP Non-Farm Employment Change , Core PCE Price Index m/m , Personal Spending m/m , Chicago PMI , Pending Home Sales m/m , Crude Oil Inventories	Unemployment Claims , ISM Manufacturing PMI , Final Manufacturing PMI , Construction Spending m/m.	Average Hourly Earnings m/m , Non-Farm Employment Change , Unemployment Rate.
UK/EURO ZONE	M3 Money Supply y/y , Private Loans y/y .	German Prelim CPI m/m , Spanish Flash CPI y/y , German Unemployment Change , BOE Financial Stability Report ,	German Retail Sales m/m , Net Lending to Individuals m/m , CPI Flash Estimate y/y , Core CPI Flash Estimate y/y.	Manufacturing PMI , Bank Stress Test Results , Spanish Manufacturing PMI , Italian Manufacturing PMI , French Final Manufacturing PMI .	Spanish Unemployment Change , Construction PMI , PPI m/m .
INDIA			GDP Growth Rate YoY.	Auto no, Nikkei Manufacturing PMI.	

Risk Disclosure & Disclaimer : This report/message is for the personal information of the authorized recipient and does not constitute to be any investment, legal or taxation advice to you. Narnolia Securities Ltd. (Hereinafter referred as NSL) is not soliciting any action based upon it. This report/message is not for public distribution and has been furnished to you solely for your information and should not be reproduced or redistributed to any other person in any form. The report/message is based upon publicly available information, findings of our research wing "East wind" & information that we consider reliable, but we do not represent that it is accurate or complete and we do not provide any express or implied warranty of any kind, and also these are subject to change without notice. The recipients of this report should rely on their own investigations, should use their own judgment for taking any investment decisions keeping in mind that past performance is not necessarily a guide to future performance & that the value of any investment or income are subject to market and other risks. Further it will be safe to assume that NSL and /or its Group or associate Companies, their Directors, affiliates and/or employees may have interests/ positions, financial or otherwise, individually or otherwise in the recommended/mentioned securities/mutual funds/model funds and other investment products which may be added or disposed including & other mentioned in this report/message. NSL or any of its affiliates or employees shall not be in any way responsible for any loss or damage that may arise to any person from any action taken based on the above information or inadvertent error in the information contained in this report/message.

Narnolia

Advance Strategy · Simple Solutions

(Regn. No. : INP 000004011)

Narnolia Securities Ltd.

Narnolia Research Lab

Stellar IT Park | 5th Floor | Office Space No. 6 | Tower-II Ind Plot
No. C-25 | Sector-62 | Noida | Ph : 0120-4215110

Central Strategy Desk - Kolkata

201 | 2nd Floor | Marble Arch Building | 236B-AJC Bose Road
Kolkata-700 020 , Ph : 033-40501500 |
Email : research@narnolia.com | www.narnolia.com