

SGX NIFTY : 7923 (25 Pt Up)

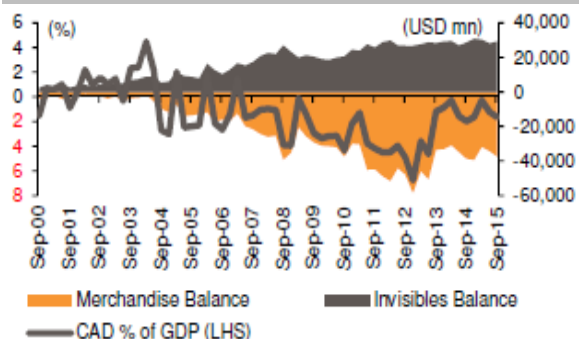
Quote of the Day

"Abnormally good or abnormally bad conditions do not last forever. This is true not only of general business but of particular industries as well. Corrective forces are often set in motion which tend to restore profits where they have disappeared, or to reduce them where they are excessive in relation to capital."

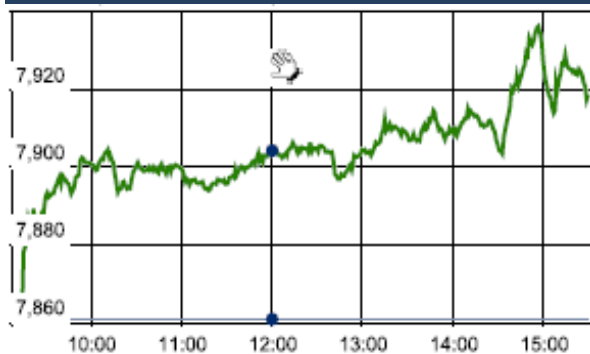
Benjamin Graham

Chart of the Day

CAD Vs GDP Trend



Index Action Nifty (28th Dec 15)



Index

Contents	Page	Coverage
News	2	Update
Economic Calendar	3	Update

Market

Name	Value	Change
Sensex	26,034.13	195.52
Nifty	7925.15	64.10
DOW	17,528.27	(23.90)
NASDAQ	5,040.98	(7.51)
CAC	4,671.95	(45.23)
DAX	10,653.91	(73.73)
FTSE	Closed	
NIKKIE	18,902.50	29.15
HANG SENG	21,978.64	59.02
EW ALL SHARE	13979.21	81.07

Institutional Turnover

FII

Investor	Buy(Cr.)	Sale(Cr.)	Net(Cr.)
28-Dec-15	1900.63	2203.25	(302.62)
Dec,15	52778.48	56376.43	(3597.95)
2015	1103421.02	1119859.46	(16438.44)

DII

Investor	Buy(Cr.)	Sale(Cr.)	Net(Cr.)
28-Dec-15	2446.49	1458.67	987.82
Dec,15	31801.07	22301.06	9500.01
2015	457633.34	390678.16	66955.18

Commodity Price

Commodity/Currencies	Value	
GOLD	25125.00	↓
SILVER	33451.00	↓
CRUDEOIL	37.81	↓
COPPER	308.25	↓
NATURALGAS	149.20	↑
DOLLAR/RS.	66.28	↑
EURO/RS.	72.75	↑
POUND/RS.	98.78	↑

Market Snapshot

Top Price Performers

Top Performers 1D	% Change	Top Performers 1W	% Change	Top Performers 1M	% Change
PRAENG	20.00	SPENTEX	88.48	DONEAR	124.43
RMMIL	20.00	PIRLIFE	65.14	GEMINI	122.00
ARSSINFRA	20.00	PARACABLES	64.45	RAMANEWS	101.20
KEMROCK	20.00	RMMIL	55.06	SPENTEX	100.00
PIPAVAVDOC	19.99	SHREEKRPOL	52.17	RUBYMILLS	97.52

Worst Performers 1D	% Change	Worst Performers 1W	% Change	Worst Performers 1M	% Change
PRITI	(9.84)	SHRENUJ	(22.38)	SHRENUJ	(48.66)
RICOHQ	(9.83)	PRITI	(19.12)	PRITI	(38.89)
INFODRIVE	(7.14)	RASOYPR	(16.67)	AMTEKINDIA	(36.30)
ALCHEM	(7.04)	HBLPOWER	(15.08)	SEZAL	(30.43)
HANUNG	(6.51)	NETWORK	(14.08)	KGNIND	(29.82)

Top News

• **Ramkrishna Forging Mgt Guideline** : Company says the global environment has been impacting demand negatively but hopes strength in domestic market to aid in overall volume growth of 35-40 percent over the next couple of years.

Company is excellent and this provides hope that the overall business growth will be strong with volumes likely to grow at 35-40 percent.

Company also expressed hope that the export market will revive soon enough to enable the company to achieve its guidance of Rs 2,000 crore topline from current Rs 750 cr over next couple of years.

• **Lupin** has received US health regulator's approval to market Fyavolv tablets, used to treat postmenopausal osteoporosis, in the American market. The company has received the final approval from the United States Food and Drug Administration (FDA) to market Fyavolv tablets, Lupin today said in a statement. "Lupin's US subsidiary, Lupin Pharmaceuticals Inc shall commence promoting the product in the US shortly,"

• **Aurobindo Pharma** Gets tentative US FDA nod for Esomeprazole magnesium or for Nexium generic . Esomeprazole magnesium is used to treat gastric ulcers

• **Jindal Steel & Power** announced that the Board of Directors of the Company has, through resolution passed by circulation on 28 December 2015 approved giving of the right in terms of RBI circular on the Strategic Debt Restructuring Scheme dated 08 June 2015, to the lenders of Jindal Power (JPL) for its 1200 MW (2X600 MW) thermal power project situated at Tamnar, District Raigarh, Chhattisgarh ("Phase III Project") for conversion of their loan into equity share capital of JPL in the event of default.

• **L&T Finance Holdings** says Citigroup Global Markets hikes stake by 1.82 percent to 7.56 percent in company

• **Welspun Enterprises** and Apco Infratech have emerged as the successful bidders for the two projects on the Delhi-Meerut Expressway, which would be built through the hybrid annuity model in which the government would pay 40% of the project cost.

• **Vinati Organics Mgt Guideline** : Company said that the company expects a 15 percent revenue growth and a Rs 150-200 crore gain from new products for the next two years. The company gets 68 percent of its revenue from export markets where 88-90 percent revenue comes mainly from 3 products – IBB (Isobutyl Benzene), IB (Isobutylene) and ATBS (Methylpropanesulfonic Acid).

• **Private equity firm Clearwater Capital Partner** has reduced its stake in Oricon Enterprises by 4.39 percent, selling 69.02 lakh shares in the open market.

• **Titan** says festive season had a mixed response from customers in Q3FY16 . Watches & eyewear categories did not see expected traction in Q3FY16 . Finance Ministry's new PAN card norms may have some impact on cash sales

• **Consumer sentiment** rose to a seasonally adjusted 92.6, from 91.8 in the preceding month. Analysts had expected UoM consumer sentiment to rise to 92.0 last month.

• Ministry of Economy Trade and Industry said that Japan retail sales fell to a seasonally adjusted annual rate of -1.0%, from 1.8% in the preceding month. Analysts had expected retail sales to fall at annual rate of to -0.6% last month.

• **Japanese Household Spending** fell to a seasonally adjusted -2.9%, from -2.4% in the preceding month. Analysts had expected Japanese Household Spending to remain unchanged at -2.4% last month.

• **Ministry of Economy, Trade and Industry** said that industrial production fell to a seasonally adjusted -1.0%, from 1.4% in the preceding month. Analysts had expected industrial production to fall -0.6% last month.

• **Infrastructure and Transport said that Japanese Housing Starts** rose to a seasonally adjusted 1.7%, from -2.5% in the preceding quarter. Analysts had expected Japanese Housing Starts to rise to 1.0% in the last quarter.

Economic Calendar

Country	Monday 28th Dec 15	Tuesday 29th Dec 15	Wednesday 30th Dec 15	Thursday 31th Dec 15	Friday 1th Jan 16
US		Goods Trade Balance , S&P/CS Composite-20 HPI y/y .	Chicago PMI ,Pending Home Sales m/m , Crude Oil Inventories .	Unemployment Claims , Natural Gas Storage .	
UK/EURO ZONE	Italian 10-y Bond Auction	German Prelim CPI m/m ,French Consumer Spending m/m , Index of Services 3m/3m .	Spanish Flash CPI y/y , M3 Money Supply y/y , Private Loans y/y , German Import Prices m/m .	ECB Monetary Policy Meeting Accounts , Housing Equity Withdrawal q/q .	
INDIA					



SEBI Registered Portfolio Manager

(Regn. No. : INP 000004011)

Narnolia Securities Ltd.

Narnolia Research Lab

Stellar IT Park | 5th Floor | Office Space No. 6 | Tower-II/nd Plot No. C-25 | Sector-62 | Noida | Ph : 0120-4215110

Central Strategy Desk - Kolkata

124 | 1st Floor | 7/1 Lords Sinha Road | Kolkata - 71
Ph : 033-22821500 | M : 93347 14418, 98302 69810