

SGX NIFTY : 7661 (48 Pt Up)

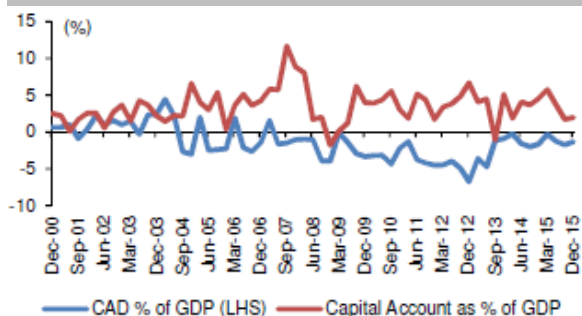
Quote of the Day

"Bargains are the holy grail of the true stockpicker. The fact that 10 to 30 percent of our net worth is lost in a market sell-off is of little consequence. We see the latest correction not as a disaster but as an opportunity to acquire more shares at low prices. This is how great fortunes are made over time."

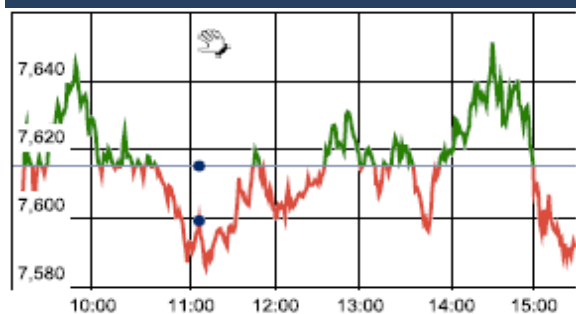
Peter Lynch

Chart of the Day

CAD VS Capital Account Trend



Index Action Nifty (29th Mar 16)



Index

Contents	Page	Coverage
News	2	Update
Economic Calendar	3	Update

Market

Name	Value	Change
Sensex	24,900.46	(65.94)
Nifty	7597.00	(18.10)
DOW	17,602.30	120.81
NASDAQ	4,846.62	79.83
CAC	4,366.67	36.99
DAX	9,887.94	36.59
FTSE	6,105.90	(0.58)
NIKKEI	16,996.28	(107.26)
HANG SENG	20,650.49	284.19
EW ALL SHARE	13065.56	(19.59)

Instituional Turnover

FII

Investor	Buy(Cr.)	Sale(Cr.)	Net(Cr.)
29-Mar-16	4577.65	4064.20	513.45
Mar,16	90905.91	72203.49	18702.42
2016	234043.37	241553.15	(7509.78)

DII

Investor	Buy(Cr.)	Sale(Cr.)	Net(Cr.)
29-Mar-16	1834.08	2390.77	(556.69)
Mar,16	26195.73	39800.16	(13604.43)
2016	108110.70	97264.36	10846.34

Commodity Price

Commodity/Currencies	Value	
GOLD	28743.00	↑
SILVER	36560.00	↓
CRUDEOIL	39.60	↑
COPPER	326.50	↓
NATURALGAS	132.10	↑
DOLLAR/RS.	66.40	↓
EURO/RS.	74.97	↑
POUND/RS.	95.44	↑

Market Snapshot

Top Price Performers

Top Performers 1D	% Change	Top Performers 1W	% Change	Top Performers 1M	% Change
PGEL	19.96	KSOILS	35.29	DWARKESH	83.17
ORIENTCONT	18.04	SUPREMEINF	27.32	PRAKASHCON	74.63
KSOILS	15.00	SHARRESLTD	27.32	SANDUMA	62.18
SUMMITSEC	14.09	PARLESOFT	27.31	WEBELSOLAR	62.05
V2RETAIL	11.70	AXIS-IT&T	26.82	DHARSUGAR	61.73

Worst Performers 1D	% Change	Worst Performers 1W	% Change	Worst Performers 1M	% Change
KIRIINDUS	(16.20)	RAINBOWPAP	(37.90)	SHRENUJ	(38.58)
ABGSHIP	(13.97)	SHREEKRPOL	(25.64)	INDINFO	(33.33)
INFODRIVE	(13.04)	FARMAXIND	(25.00)	GLOBOFFS	(32.88)
GLOBOFFS	(10.72)	PARRYSUGAR	(23.40)	AMTEKINDIA	(31.88)
YBRANTDIGI	(10.40)	GLOBOFFS	(22.87)	OUTCTYTRVL	(29.76)

Top News

- Lupin 's Mandideep unit** has been flagged by United States Food and Drug Administration (US FDA). In particular, the active pharmaceutical ingredient (API) and formulations units of the plant in Madhya Pradesh have received two observations each . The pharma company's Mandideep unit was inspected by US FDA between February 8-19. Estimates suggest the Mandideep unit could be contributing USD 200 million in revenues for Lupin. The unit is the second largest revenue contributor to the company's US business after its Goa plant.
- ONGC** announced USD 5.07 billion investment in its KG basin oil and gas block but the delay on government's part in approving a higher gas price for difficult areas would mean the output would be delayed by one year to 2019-20. ONGC today announced USD 5.07 billion investment in its KG basin oil and gas block but the delay on government's part in approving a higher gas price for difficult areas would mean the output would be delayed by one year to 2019-20.
- Thai Union Group Pcl, the world's largest canned tuna maker**, said on Tuesday it would spend 1.25 billion Indian rupees (USD18.80 million) to buy a 40 percent stake in the shrimp processing unit of India's **Avanti Feeds Ltd**. The purchase of the stake in Avanti Frozen Foods Private Ltd will add production capacity to meet growing demand, the Thai firm. The deal will also help to offset a hit to shrimp production in Thailand, where output is still less than half of the level seen in 2013 before the outbreak of early mortality syndrome.
- Ashok Leyland Ltd** has informed that the Company won Defence Contract worth Rs.800 crore from Indian armed forces for supply of advanced-technology products - 450 units of Field Artillery Tractor (FAT) 6x6 and other similar Super Stallion vehicles; and 825 units of Ambulance 4x4.
- Adani Ports and Special Economic Zone Ltd** has informed that the Company has raised Rs. 500 crores (Rupees Five Hundred Crores only) on March 29, 2016 by allotment of 5000 Rated, Listed, Secured, Taxable, Redeemable, Non-Convertible Debentures (NCDs) of the face value of Rs. 10,00,000/- each on private placement basis.
- Cadila Healthcare** has received approval from the US health regulator USFDA to market anti-viral generic Acyclovir capsules in the American market. The company has received final approval from the US Food and Drug Administration (USFDA) to market Acyclovir capsules USP 200 mg . The drug will be produced at the company's formulations manufacturing facility at SEZ, Ahmedabad
- Zydus Healthcare**, a wholly owned subsidiary of Cadila Healthcare has entered into a definitive agreement to acquire Actibile from Albert David.
- Canada's Raw Material Price Index** fell to -2.6%, from -0.4% in the preceding month. Analysts had expected Canada's Raw Material Price Index to fall -0.8% last month.
- Euro Zone M3 Money Supply remained unchanged** at 5.0%, from 5.0% in the preceding month. Analysts had expected Euro Zone M3 Money Supply to remain unchanged at 5.0% last month.
- Ministry of Economy Trade and Industry said that retail sales** rose to a seasonally adjusted annual rate of 0.5%, from -0.1% in the preceding month. Analysts had expected retail sales to rise at annual rate of to 1.7% last month.
- U.S. core PCE price index** rose to a seasonally adjusted 0.1%, from 0.3% in the preceding month. Analysts had expected U.S. core PCE price index to rise 0.2% last month.
- Japan's CSPI** fell to a seasonally adjusted annual rate of 0.2%, from 0.3% in the preceding month whose figure was revised up from 0.2%. Analysts had expected Japan's CSPI to fall to last month.

Economic Calendar

Country	Monday 28th Mar 16	Tuesday 29th Mar 16	Wednesday 30th Mar 16	Thursday 31th Mar 16	Friday 1th April 16
US	S&P/CS Composite-20 HPI y/y , CB Consumer Confidence , Richmond Manufacturing Index	ADP Non-Farm Employment Change , Crude Oil Inventories .	Unemployment Claims , Chicago PMI, Natural Gas Storage .	Average Hourly Earnings m/m ,Non-Farm Employment Change , Unemployment Rate, ISM Manufacturing PMI , Revised UoM Consumer Sentiment .	Labor Market Conditions Index m/m .
UK/EURO ZONE	German Retail Sales m/m , Spanish Flash CPI y/y , German Unemployment Change , M3 Money Supply y/y ,	German Prelim CPI m/m , French Consumer Spending m/m , Italian Monthly Unemployment Rate .	Current Account , Final GDP q/q , Net Lending to Individuals m/m , CPI Flash Estimate y/y , Core CPI Flash Estimate y/y , ECB Monetary Policy Meeting Accounts .	Manufacturing PMI , Unemployment Rate , Italian Manufacturing PMI , French Final Manufacturing PMI , German Final Manufacturing PMI .	Construction PMI , Spanish Unemployment Change , PPI m/m .
INDIA					



(Regn. No. : INP 00004011)

Narnolia Securities Ltd.

Narnolia Research Lab
Stellar IT Park | 5th Floor | Office Space No. 6 | Tower-IInd Plot No. C-25 | Sector-62 | Noida | Ph : 0120-4215110

Central Strategy Desk - Kolkata
124 | 1st Floor | 7/1 Lords Sinha Road | Kolkata - 71
Ph : 033-22821500 | M : 93347 14418, 98302 69810