

SGX NIFTY : 8288 ( 18 Pt Down )

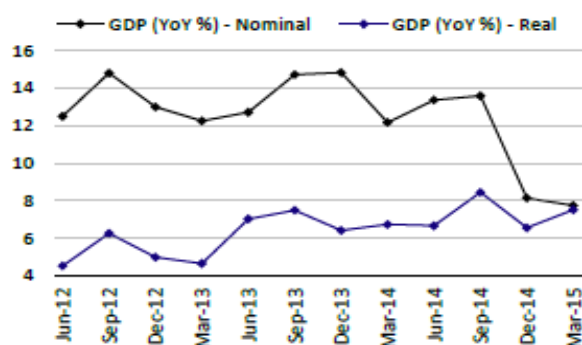
**Quote of the Day**

"We never want to count on the kindness of strangers in order to meet tomorrow's obligations. When forced to choose, I will not trade even a night's sleep for the chance of extra profits."

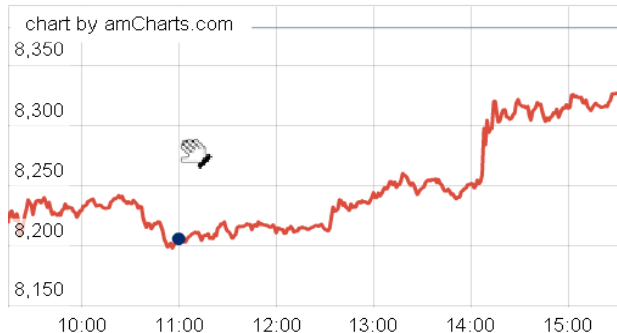
Warren Buffett

**Chart of the Day**

**GDP Trend**



**Index Action Nifty ( 29th June 15 )**



**Index**

Contents	Page	Coverage
News	2	Update
Economic Calendar	3	Update

**Market**

Name	Value	Change
Sensex	27,645.15	(166.69)
Nifty	8318.40	(62.70)
DOW	17,596.35	(350.33)
NASDAQ	4,958.47	(122.04)
CAC	4,869.82	(189.35)
DAX	11,083.20	(409.30)
FTSE	6,620.48	(133.22)
NIKKEI	20,179.81	69.86
HANG SENG	25,986.94	19.98
EW ALL SHARE	14195.35	(133.43)

**Institutional Turnover**

**FII**

Investor	Buy(Cr.)	Sale(Cr.)	Net(Cr.)
29th June,15	2788.64	3500.52	(711.88)
June,15	44426.48	49651.85	(5225.37)
2015	505229.41	479178.16	26254.99

**DII**

Investor	Buy(Cr.)	Sale(Cr.)	Net(Cr.)
29th June,15	2099.06	1192.68	906.38
June,15	39683.98	28238.02	11445.96
2015	188078.71	173093.14	14985.57

**Commodity Price**

Commodity/Currencies	Value	
GOLD	26658.00	↑
SILVER	35810.00	↓
CRUDEOIL	58.14	↓
COPPER	374.70	↑
NATURALGAS	180.80	↓
DOLLAR/RS.	63.84	↑
EURO/RS.	71.32	↑
POUND/RS.	100.24	↑

## Market Snapshot

### Top Price Performers

Top Performers 1D	% Change	Top Performers 1W	% Change	Top Performers 1M	% Change
KAVVERITEL	20.00	JMTAUTOLD	57.82	WINSOMEDJ	93.10
ALLSEC	19.05	AADHAARVEN	54.55	3IINFOTECH	79.81
PANYAMCEM	18.60	NEXTMEDIA	41.05	NEXTMEDIA	75.72
PARRYSUGAR	16.96	ARTSONENGG	40.76	CHENNPETRO	54.62
GTLINFRA	13.64	KAVVERITEL	40.63	INDORAMA	54.58

### Worst Price Performers

Worst Performers 1D	% Change	Worst Performers 1W	% Change	Worst Performers 1M	% Change
CALSREF	(12.50)	XLENERGY	(28.25)	ROLATAN	(84.22)
NUTEK	(12.12)	RAJTV	(22.24)	ELPROINTL	(80.96)
ARIHANT	(10.93)	BIRLACOT	(22.22)	RAJTV	(61.64)
OMNITECH	(10.48)	ADINATHBI	(21.74)	NAKODATEX	(53.75)
GEECEE	(9.57)	SUDAR	(21.62)	CHIRAWA	(52.13)

## Top News

• **Rohta Mgt Guideline** : 15 percent topline and bottomline growth can be expected in FY16.

Rohta India is focusing on its IP business in three main areas — defence, smart cities and big data analysis. IP orders will help boost growth in coming years as the segment gives better margins with reduced sales cost

The company is also in talks with central and state governments for its Smart Cities mission. Singh informed that Rohta has been a part of over 100 smart city projects around the world.

The company recently won an order from Statoil to improve its operational efficiencies.

The capex for FY16 will be around Rs 350-400 crore

• **Motherson Sumi Mgt Guideline** : Company stock is currently in focus because 80 percent of its revenues are derived from subsidiaries based in Europe and now with the fear of Greece exiting Eurozone there is a possibility of impact on the business revenues of the company.

The total debt exposure for the company currently stands at 600 million euros.

• **Larsen & Toubro (L&T)** said it has received orders worth Rs 2,035 crore across various business verticals. Its building and factor business segment has secured new orders for construction of office spaces, including add-ons.

• **Gammon Infrastructure Projects Ltd** has informed that Indira Container Terminal Private Limited ('ICTPL'), one of the joint venture SPV of the Company, has accepted the Mumbai Port Trust (MbPT) proposal for alternative use of the Offshore Container Terminal for Roll-on/Roll-off operations, i.e. operations of providing facilities to the importers and exporters of automobiles and self propelled equipment, for a period of one year from the date of operation with revenue share of 45% to ICTPL and 55% to MbPT.

• **Brigade Enterprises Ltd** has approved the acquisition of the property admeasuring 15 acres 86 cents situated at Perungudi on OMR, Chennai from Kansai Nerolac Paints Limited for a consideration of Rs. 550,00,00,000 (Rupees five hundred and fifty crores only) subject to Legal Due Diligence.

• **Kansai Nerolac Paints** has approved the sale of the Company's land admeasuring 15.86 acres (15 acres 86 cents) at Perungudi, Chennai to Brigade Properties Pvt. Ltd. or its Nominees/ another Special Purpose Vehicle (SPV) formed by Brigade Group and GIC Singapore ( hereinafter referred as the "Purchaser" ) for a sum of Rs. 550 crores ( Rupees Five hundred and Fifty Crores)

• **Greece** looks set to default on its debt repayment this week, forcing Athens to impose capital controls to halt bank runs. Greeks will find their savings blocked and their banks closed for a week following a weekend that has shaken Europe's single currency. The Athens Stock Exchange will not open either.

• **China's central bank** cut interest rates on Saturday and reduced the reserves that certain banks must hold. The People's Bank of China (PBoC) cut the benchmark 1-year lending rate by a quarter percentage point to 4.85%, its four rate cut since November. The PBoC also lowered the reserve requirement ratio for some lenders by half of a percentage point.

• **Canada's Industrial Product Price Index** rose to 0.5%, from -0.9% in the preceding month. Analysts had expected Canada's Industrial Product Price Index to rise to 0.5% last month.

• **Bank of England** said total net lending to individuals increased by £3.1 billion last month, below forecasts for £3.3 billion and up from £2.9 billion in April . Net secured lending rose by £2.1 billion in May, above expectations for an increase of £2.0 billion, after rising by £1.7 billion in April.

• **Spanish CPI** rose to 0.3%, from 0.5% in the preceding month. Analysts had expected Spanish CPI to rise 0.1% last month.

• **Hong Kong Retail Sales** rose to a seasonally adjusted annual rate of -0.1%, from -2.2% in the preceding month. Analysts had expected Hong Kong Retail Sales to fall to -2.7% last month.

Country	Monday 29 June 15	Tuesday 30 June 15	Wednesday 1 July 15	Thursday 2 July 15	Friday 3 July 15
US	CB Consumer Confidence , Chicago PMI .	Chicago PMI , S&P/CS Composite- 20 HPI y/y ,	ADP Non-Farm Employment Change , ISM Manufacturing PMI , Crude Oil Inventories .	Non-Farm Employment Change , Unemployment Rate , Average Hourly Earnings m/m , Unemployment Claims .	Bank Holiday
UK/EURO ZONE	German Retail Sales m/m , Current Account , Final GDP q/q , Eurogroup Meetings , GDP m/m .	German Retail Sales m/m , CPI Flash Estimate y/y , Core CPI Flash Estimate y/y , Unemployment Rate , Eurogroup Meetings .	German Final Manufacturing PMI , Spanish Manufacturing PMI , Manufacturing PMI , BOE Financial Stability Report .	Spanish Unemployment Change , Halifax HPI m/m , Construction PMI , ECB Monetary Policy Meeting Accounts ,	Spanish Services PMI , Services PMI , Retail Sales m/m .
INDIA			Auto No & HSBC Manufacturing PMI No	Auto No	

## Narnolia Securities Ltd.

### Narnolia Research Lab

Stellar IT Park | 5th Floor | Office Space No. 6 | Tower-II Ind Plot No. C-25 |  
Sector-62 | Noida | Ph : 0120-4215110

### Central Strategy Desk - Kolkata

124 | 1st Floor | 7/1 Lords Sinha Road | Kolkata - 71  
Ph : 033-22821500 | M : 93347 14418, 98302 69810