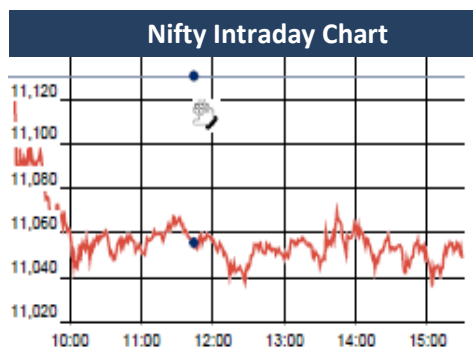


KEY LEVELS

Support 1 : 11039
Support 1 : 10782

Resistance 1 : 11200



Market Outlook

After opening on a subdued note, Nifty traded in the negative territory throughout the day on Tuesday and closed the day at 11049.65. It had a net loss of 0.73% over the previous trading day's close. The broader market was in the grip of bears as the midcap and small cap indices under-performed the benchmark index and closed the day after losing 0.8%-1.7%.

On the sectoral front, the selling was witnessed across the board. Banking, Media and Information Technology stocks lead to a decline. The breadth of the market was negative and about three shares declines for every share advanced at NSE.

Investor sentiment continues to be highly positive. Nifty put writers are writing options of higher strike price almost as quickly as Nifty makes newer high. On-going Q3 quarter results are unfolding almost in-line with the street expectations. And double-digit growth for Nifty EPS in FY18 is almost secured. The breadth of the market was negative and about two shares declines for every share advanced at NSE.

Though there does not yet appear any threat to this on-going rally in terms of market technicals, it's worth to remember that stock market can never be a one-way street. So it would be prudent to continue trading long but with trailing stop loss. Post fresh gap made again this Monday, Nifty trend reversal level gets shifted upward to 10,782

Market		
Market	Value	% Change
Morning Traded Market		
SGX NIFTY	11,022.50	-0.40%
NIKKIE	23,297.47	0.02%
HANG SENG	32,575.07	-0.10%
Yesterday Closing Market		
Sensex	36,033.73	-0.69%
Nifty	11,049.65	-0.73%
DOW	26,076.89	-1.37%
NASDAQ	7,402.48	-0.86%
CAC	5,473.78	-0.87%
DAX	13,197.71	-0.96%
FTSE	7,587.98	-1.10%
EW ALL SHARE	20,477.46	-0.06%

% Change in 1 day

Commodity Price (Yesterday Closing)

Commodity/Currencies	Value	% Change
GOLD	29991.00	-0.23%
SILVER	39072.00	-0.18%
CRUDEOIL	68.11	0.09%
NATURALGAS	207.10	2.32%
DOLLAR/RS.	63.61	0.03%
EURO/RS.	79.11	0.35%
POUND/RS.	89.80	0.38%

% Change in 1 day

Institutional Turnover

FII			
Investor	Buy(Cr.)	Sale(Cr.)	Net(Cr.)
30-Jan-18	6183	6288	(106)
Jan-18	127192	117487	9705
2018	127192	117487	9705
DII			
Investor	Buy(Cr.)	Sale(Cr.)	Net(Cr.)
30-Jan-18	4636	4918	(282)
Jan-18	87207	88103	(896)
2018	87207	88103	(896)

Event Today Interim Dividend

JMFINANCIL : Rs 0.70/-

RNAM : Rs 5/-

WIPRO : Rs 1/-

(Ex Date : 31. 1.2018)

Reduction of Capital

REGTRUS

(Ex Date : 31. 1.2018)

Right Issue of Equity Shares

PEL

TATASTEEL

(Ex Date : 31. 1.2018)

Result

BHARATGEAR , BLUECOAST,
COROMANDEL, DABUR, DHAMPURSUG
EIHAHOTELS, EQUITAS, ESCORTS
EXIDEIND, GHCL, GUJAUTO, HCC
HCL-INSYS, HINDCOPPER, LT, NTPC
ICICIBANK, IDBI, IFBAGRO, IIFL,PVR
J&KBANK, JKLAKSHMI, JSWSTEEL
PHILIPCARB, SHOPERSTOP, VEDL

Concall

Chola : 9:15AM,Subros: 10:30 AM,

Mahindra Life, Manpasand, CARE : 11:00 AM

Jagran : 12:00PM, Suven : 12:30 PM

Ashoka :2:00 PM, Jain Irrigation : 2:30 PM

Nava Bharat : 3:00 PM, Shakti Pump:3:30 PM

HSIL : 3:30 PM, AlembicPharma : 4:00 PM

Dabur, AU Smal, Shankara :4:00PM

Oberoi, Somany: 4:00PM, Escorts: 5 PM

JSW Stee, PVR, L&T : 5:30 PM

Quote of the Day : "When stocks are attractive, you buy them. Sure, they can go lower. I've bought stocks at \$12 that went to \$2, but then they later went to \$30. You just don't know when you can find the bottom."
Peter Lynch

PERSISTENT

"HOLD"

31th Jan 2018

Persistent is building next-generation transformative platforms and solutions in Healthcare and Financial Services. It is investing in data digital and IoT. The digital business is looking pretty good. We see better growth on quarter on quarter basis. Even Management expects the double-digit revenue growth for FY19E on account of healthy traction in digital business especially in Healthcare and BFSI. The management expects that the revised arrangement with reselling rights and the company's efforts to ramp up sales efforts under a new leader in Europe should drive business around IoT offerings. But still there is a concern as the major contributor of Persistent like Services business has continued witnessing structural challenges that has resulted in total revenue reduction to 41.9% in 3QFY18 from 44% in 3QFY17. Also Accelerite contributed to soft revenue performance in 3QFY18 mainly impacted by delay in some deals thus the management is working on the strategy to improve it going ahead.

We recommend Hold on the stock with the target price of Rs 823 at 15x FY19e EPS.

Amber Enterprises India Limited : IPO Note

"SUBSCRIBE"

17th Jan 2018

Amber's revenues have been growing at a CAGR of 37% for last 5 years. The company's has EBDITA Margin of 8-9% and Net Profit margin of 2-3%. The net margin for the company should expand going forward owing to company's strategy for repayment of Borrowings with the IPO money being raised. Company is a market leader in Indian RAC, OEM/ODM segments. In last five years the company has acquired 2 companies- PICL in 2012 and IL Jin in 2017 and with these acquisitions the company is able to maximise its product portfolio. The company's business augurs well with our theme of Growth in Indian Consumption business. The company is being offered at 1.5 times FY19EV/Sales. We recommend SUBSCRIBE

*For details, refer to our daily report- *India Equity Analytics*

Top News**TVSMOTOR concall update:**

- # The company expects growth momentum to continue in FY19 and it will grow better than the industry
- # Double digit margin guidance for 4QFY18 & FY19
- # Other expenses to remain high as the company will continue to invest in marketing and sales promotion.
- # The company is fully focused on bottom line improvement.
- # Apache RTR 310 received good response and the company expects volume of 10000 units in first 12 months.
- # Currently waiting period for Apache RTR 310 is 4-4.5 months.
- # Capex guidance of Rs.500-600 crores for FY18 and Rs.500 crores for FY19.
- # The company has taken any new loan in the current fiscal.
- # There will be a new product launch next week and another in 4QFY18.

>> **Reliance Communications Mgt Guideline** : Company said through the asset monetization programme, Dhirubhai Ambani Knowledge Centre (DAKC) development programme and through proceeds from the stake sale in our global business. Company should have a debt of around Rs 7000 crore, which would be a long-term loan of 20 years with low interest rates from April 1, 2018.

So from April 1, it would be a restructured company without any legacy and hopefully RComm would be in black by then. The sale process is on and will likely be completed by end of February or mid-March as the lenders are running the process and final bids are expected.

The company plans to develop DAKC into an international Centre or IT Township.

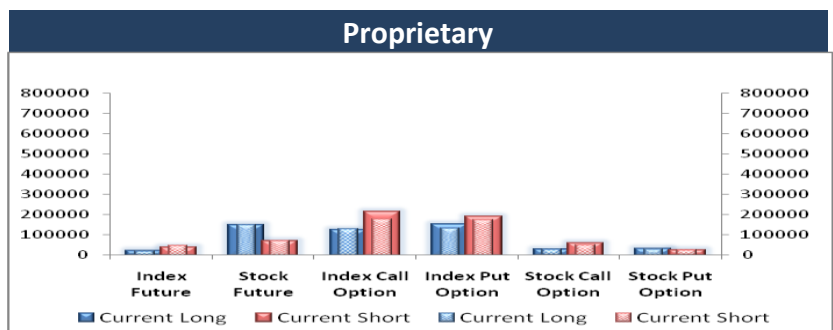
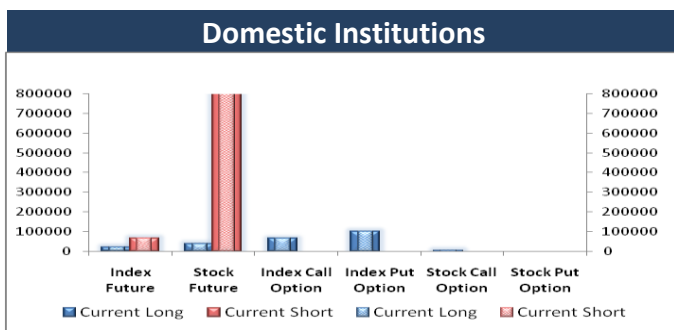
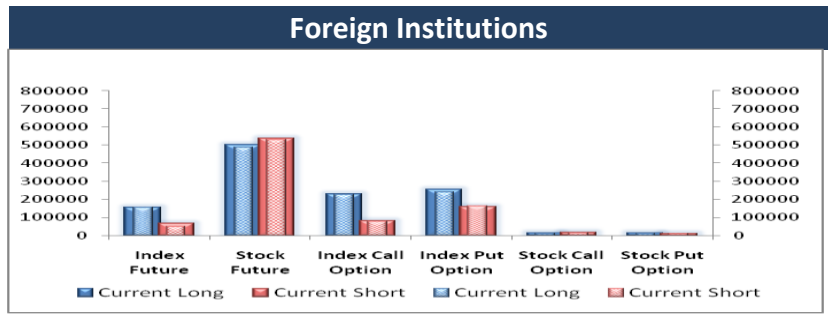
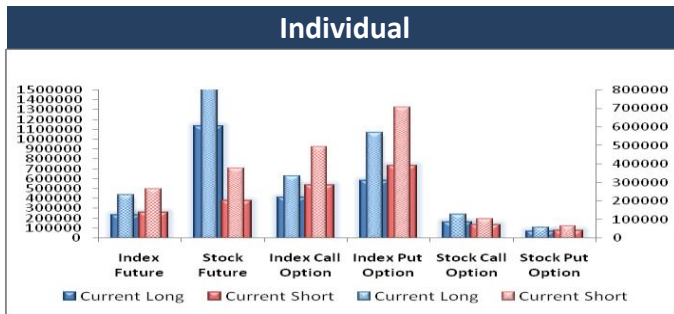
ORIENTBANK Q3FY18 CONCALL UPDATE:

- >>Total business of the bank has increased by 5.50% volume wise to 3.78 lakh crore.
- >>Credit risk weight assets decline by 3.04% due to capital optimal growth.
- >>Provision coverage ratio has been increased from 49.44% to 62.09% YoY.
- >>Fresh slippages during the quarter 3304 crores.
- >>The Bank has made entire applicable provision in both NCLT list I and list II. At present there is aggregate provisioning coverage of more than 60%, in list 1-9 A/c and list II-16 A/c.
- >>There is a net loss of Rs 1985.42 crores during Q3FY17-18 due to higher provisioning, decrease in agri profits, reversal of interest on agriculture debt waiver.
- >>The govt has announced capital infusion of Rs 3571 crore.
- >>Watchlist is around 4000 crore for next two quarters.
- >>Decline in employee cost is due to change in depreciation policy which was adopted in dec 16.
- >>Recap bond amount for FY17-18 amounts to Rs 3571 crore and is likely to come in two tranches.
- >>Agri slippages amounts to Rs 1267 crore due to loan waiver.
- >>Interest reversal in agri amounts to Rs 251 crore and Overall interest reversal during the quarter is Rs 400 crore.
- >>O/S SMA-2 and SMA-1 amounts to 2700 crore and 9000 crore respectively as on 31st dec 17.
- >> **GPPL Concall Update**
- Higher import of fertilizer drive the bulk volume growth
- Liquid volume growth driven by LPG volume
- No change in realization across all the business segment
- Mgt. is focusing on capacity utilization rather than increasing tariff rate
- One new line in container business is added in 15th Jan and another one will be added in Feb 2018.

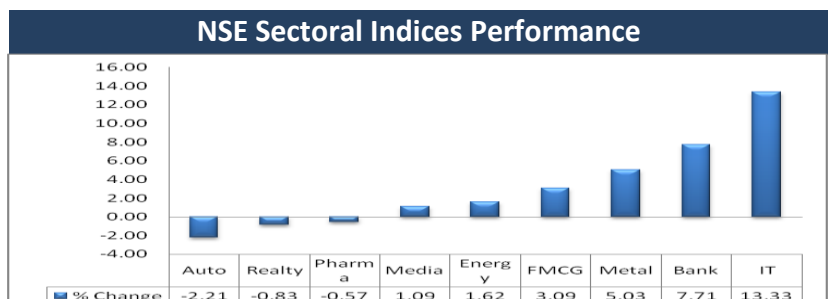
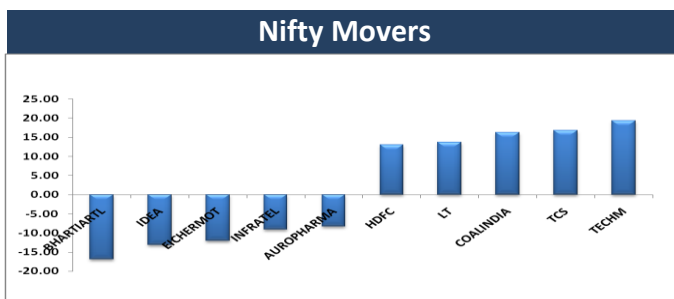
Block Deal

Exchange	Deal Date	Company	Client Name	Deal Type	Quantity	Price
NSE	30-Jan-18	AIFL	SUNGLow CAPITAL SERVICES LTD.	BUY	43174	463
NSE	30-Jan-18	KPIT	ALPHAGREP COMMODITIES PRIVATE LIMITED	BUY	1151890	216
NSE	30-Jan-18	NEWGEN	MALABAR INDIA FUND LIMITED	BUY	362371	245
NSE	30-Jan-18	RCOM	ADROIT SHARE & STOCK BROKER PVT. LTD.	BUY	14096026	30
NSE	30-Jan-18	RCOM	PURITY TRADEMAX LLP	BUY	14471616	31
NSE	30-Jan-18	RCOM	SHAASTRA SECURITIES TRADING PRIVATE LIMITED	BUY	23927859	31
NSE	30-Jan-18	TECHNO	SBI MUTUAL FUND	BUY	2192000	385
NSE	30-Jan-18	AIFL	SUNGLow CAPITAL SERVICES LTD.	SELL	133501	463
NSE	30-Jan-18	BHUSANSTL	EARC TRUST SC 283	SELL	7264560	51
NSE	30-Jan-18	JUSTDIAL	INDUS INDIA FUND (MAURITIUS) LIMITED	SELL	411733	526
NSE	30-Jan-18	KPIT	ALPHAGREP COMMODITIES PRIVATE LIMITED	SELL	1150168	216
NSE	30-Jan-18	RCOM	ADROIT SHARE & STOCK BROKER PVT. LTD.	SELL	14096026	31
NSE	30-Jan-18	RCOM	PURITY TRADEMAX LLP	SELL	14471616	31
NSE	30-Jan-18	RCOM	SHAASTRA SECURITIES TRADING PRIVATE LIMITED	SELL	23927859	31
NSE	30-Jan-18	RELIGARE	IDBI TRUSTESHIP SERVICES LTD	SELL	1996732	45
NSE	30-Jan-18	RELIGARE	MINESH JORMALBHAI MEHTA	SELL	1000000	45
NSE	30-Jan-18	TECHNO	GMO EMERGING DOMESTIC OPPORTUNITIES FUND	SELL	1666468	385
NSE	30-Jan-18	VETO	SANDEEP STOCKS PRIVATE LIMITED	SELL	100000	220

F&O OPEN INTEREST (Number of Contracts)



MARKET MOVERS (1 MONTH CHANGE)



Result Calendar Q3FY18

Bse Code	Company Name	Date	Bse Code	Company Name	Date
539300	AKSPINTEX	31-Jan-18	500171	GHCL	31-Jan-18
531147	ALICON	31-Jan-18	530469	GSLSEC	31-Jan-18
521097	AMARJOTHI	31-Jan-18	505712	GUJAUTO	31-Jan-18
507525	AMRITCORP	31-Jan-18	524238	GUJINJEC	31-Jan-18
533573	APLLTD	31-Jan-18	500185	HCC	31-Jan-18
532212	ARCHIES	31-Jan-18	500179	HCL-INSYS	31-Jan-18
500101	ARVIND	31-Jan-18	503689	HEALINV	31-Jan-18
500023	ASIANHOTNR	31-Jan-18	509631	HEG	31-Jan-18
533138	ASTEC	31-Jan-18	532041	HINDBIO	31-Jan-18
531310	AVAILFC	31-Jan-18	513599	HINDCOPPER	31-Jan-18
531591	BAMPSL	31-Jan-18	539984	HUIL	31-Jan-18
524687	BASANTGL	31-Jan-18	532174	ICICIBANK	31-Jan-18
511698	BHAGYFN	31-Jan-18	538838	ICL	31-Jan-18
511501	BHARAT	31-Jan-18	500116	IDBI	31-Jan-18
505688	BHARATGEAR	31-Jan-18	507438	IFBAGRO	31-Jan-18
531495	BLUECOAST	31-Jan-18	532636	IIFL	31-Jan-18
502216	BOMBPOT	31-Jan-18	512025	INERTIAST	31-Jan-18
531203	BRANDREAL	31-Jan-18	502330	IPAPPM	31-Jan-18
504643	BWLLTD	31-Jan-18	532209	J&K;KBANK	31-Jan-18
532386	CALSOFT	31-Jan-18	500380	JKLAKSHMI	31-Jan-18
532813	CANDC	31-Jan-18	539947	JLL	31-Jan-18
511505	CAPITALT	31-Jan-18	530915	JRFOODS	31-Jan-18
539230	CHEMIESYNT	31-Jan-18	500228	JSWSTEEL	31-Jan-18
534758	CIGNITI	31-Jan-18	524109	KABRAEXTRU	31-Jan-18
512018	CNIRESLTD	31-Jan-18	500233	KAJARIACER	31-Jan-18
531210	COLINZ	31-Jan-18	590003	KARURVYSYA	31-Jan-18
532456	COMPUAGE	31-Jan-18	511728	KZLFIN	31-Jan-18
531067	CONTILI	31-Jan-18	504258	LAKSELEC	31-Jan-18
522295	CONTROLPR	31-Jan-18	531027	LIBORD	31-Jan-18
506395	COROMANDEL	31-Jan-18	511593	LIBORDFIN	31-Jan-18
500096	DABUR	31-Jan-18	531633	LINCOPH	31-Jan-18
539455	DASL	31-Jan-18	500510	LT	31-Jan-18
526443	DATASOFT	31-Jan-18	530441	MAHAN	31-Jan-18
500119	DHAMPURSUG	31-Jan-18	530243	MANGASOF	31-Jan-18
531153	DILIGENT	31-Jan-18	533088	MHRIL	31-Jan-18
540789	DNAMEDIA	31-Jan-18	522036	MIVENMACH	31-Jan-18
504908	DUNCANENG	31-Jan-18	512267	MMWL	31-Jan-18
523127	EIHAHOTELS	31-Jan-18	503772	MODWOOL	31-Jan-18
526574	ENTRINT	31-Jan-18	540254	MTPL	31-Jan-18
539844	EQUITAS	31-Jan-18	520043	MUNJALSHOW	31-Jan-18
500495	ESCORTS	31-Jan-18	526831	NAINAMS	31-Jan-18
500086	EXIDEIND	31-Jan-18	502407	NATHPULP	31-Jan-18
530705	FLORATX	31-Jan-18	523630	NFL	31-Jan-18
511128	GALAXCP	31-Jan-18	539551	NH	31-Jan-18
530389	GEEFC	31-Jan-18	521009	NIWASSP	31-Jan-18
532309	GEPIL	31-Jan-18	500730	NOCIL	31-Jan-18

532555	NTPC	31-Jan-18	537820	VFL	31-Jan-18
521062	OCTAVE	31-Jan-18	524394	VIMTALABS	31-Jan-18
508941	PANCARBON	31-Jan-18	539118	VRLOG*	31-Jan-18
531255	PARAGONF	31-Jan-18	517399	VXLINSTR	31-Jan-18
511702	PARSHINV	31-Jan-18	538873	WINYCOMM	31-Jan-18
524046	PETPLST	31-Jan-18	504370	ZARDIINV	31-Jan-18
506590	PHILPCARB	31-Jan-18	532404	7TEC	1-Feb-18
519439	PIONAGR	31-Jan-18	500710	AKZOINDIA	1-Feb-18
532979	PIRPHYTO	31-Jan-18	500477	ASHOKLEY	1-Feb-18
531256	PRAVEEN	31-Jan-18	523850	AXTEL	1-Feb-18
530589	PRIMAPLA	31-Jan-18	532978	BAJAJFINSV	1-Feb-18
532689	PVR	31-Jan-18	500034	BAJFINANCE	1-Feb-18
530111	RAJPACK	31-Jan-18	539607	BLUECLOUDS	1-Feb-18
532503	RAJPALAYAM	31-Jan-18	519600	CCL	1-Feb-18
530807	REGALIAA	31-Jan-18	500878	CEATLTD	1-Feb-18
500390	RELINFRA	31-Jan-18	532443	CERA	1-Feb-18
511403	SAJEEV	31-Jan-18	500480	CUMMINSIND	1-Feb-18
526885	SARLAPOLY	31-Jan-18	532640	CYBERMEDIA	1-Feb-18
524546	SHABCHM	31-Jan-18	521151	DHANFAB	1-Feb-18
526137	SHETR	31-Jan-18	513452	ELANGO	1-Feb-18
532638	SHOPERSTOP	31-Jan-18	500135	ESSELPRO	1-Feb-18
523606	SIKA	31-Jan-18	536751	FIVEXTRADE	1-Feb-18
504398	SJCORP	31-Jan-18	500150	FOSECOIND	1-Feb-18
505650	SKYLMILAR	31-Jan-18	531399	GGAUTO	1-Feb-18
521161	SLSTLQ	31-Jan-18	509152	GRPLTD	1-Feb-18
532419	SMARTLINK	31-Jan-18	508486	HAWKINCOOK	1-Feb-18
512014	SOBME	31-Jan-18	532334	HBESD	1-Feb-18
531359	SRAMSET	31-Jan-18	532333	HBPOR	1-Feb-18
513605	SRIPIPES	31-Jan-18	500211	INSILCO	1-Feb-18
515081	SRIVAJRA	31-Jan-18	540775	KHADIM	1-Feb-18
536799	SRSFIN	31-Jan-18	524000	MAGMA	1-Feb-18
513488	SSWRL	31-Jan-18	540704	MATRIMONY	1-Feb-18
513151	STINDIA	31-Jan-18	503015	MODERN	1-Feb-18
538876	STSERV	31-Jan-18	500290	MRF	1-Feb-18
540212	TCIEXP	31-Jan-18	532944	ONMOBILE	1-Feb-18
526638	TEXELIN	31-Jan-18	506579	ORIENTCQ	1-Feb-18
509945	THACKER	31-Jan-18	502420	ORIENTPPR	1-Feb-18
533158	THANGAMAYL	31-Jan-18	531626	OROSMITHS	1-Feb-18
503663	TILAK	31-Jan-18	532366	PNBGILTS	1-Feb-18
500414	TIMEX	31-Jan-18	532898	POWERGRID	1-Feb-18
531644	TOKYOFIN	31-Jan-18	540293	PRICOLLTD	1-Feb-18
500418	TOKYOPLAST	31-Jan-18	532805	REDINGTON	1-Feb-18
531279	TRISHAKT	31-Jan-18	531447	ROCKONENT	1-Feb-18
505978	TRITONV	31-Jan-18	532699	ROHLTD	1-Feb-18
502281	TRIVENIGQ	31-Jan-18	532284	TCFCFINQ	1-Feb-18
503671	UNIJOLL	31-Jan-18	500114	TITAN	1-Feb-18
526113	UNRYLMA	31-Jan-18	500464	UCALFUEL	1-Feb-18
511493	VCKCAP	31-Jan-18	524576	VIVIDIND	1-Feb-18
500295	VEDL	31-Jan-18	519214	WILLIMFI	1-Feb-18

532794	ZEEMEDIA	1-Feb-18	511034	JINDRILL	2-Feb-18
504356	ZMULTIPU	1-Feb-18	532304	KJMCCORP	2-Feb-18
504988	ZWELCAST	1-Feb-18	530235	KJMCFIN	2-Feb-18
523395	3MINDIA	2-Feb-18	507912	LKPFIN	2-Feb-18
535755	ABFRL	2-Feb-18	540192	LKPSEC	2-Feb-18
532268	ACCELYA	2-Feb-18	500265	MAHSEAMLES	2-Feb-18
523411	ADCINDIA	2-Feb-18	514418	MANORG	2-Feb-18
500003	AEGISLOG	2-Feb-18	538942	MERCANTILE	2-Feb-18
526847	ASHSI	2-Feb-18	526642	MIRZAIN	2-Feb-18
505506	AXONVL	2-Feb-18	506261	MODISNME	2-Feb-18
531268	B2BSOFT	2-Feb-18	500109	MRPL	2-Feb-18
532977	BAJAJ-AUTO	2-Feb-18	532777	NAUKRI	2-Feb-18
500490	BAJAJHLDNG	2-Feb-18	524558	NEULANLAB	2-Feb-18
509053	BANASFN	2-Feb-18	512626	ORBTEXP	2-Feb-18
522004	BATLIBOI	2-Feb-18	509782	OSEASPR	2-Feb-18
506285	BAYERCROP	2-Feb-18	532486	POKARNA	2-Feb-18
531029	BHATEXT	2-Feb-18	526043	POLYCHMP	2-Feb-18
505681	BIMETAL	2-Feb-18	539354	POLYSPIN	2-Feb-18
533108	BTTL	2-Feb-18	532460	PONNIERODE	2-Feb-18
533272	CEBBCO	2-Feb-18	500540	PREMIER	2-Feb-18
502445	CITADEL	2-Feb-18	521149	PRIMEURB	2-Feb-18
540403	CLEDUCATE	2-Feb-18	531273	RADHEDE	2-Feb-18
500097	DALMIASUG	2-Feb-18	530291	RAJAGRO	2-Feb-18
519588	DFM	2-Feb-18	524037	RAMAPHO	2-Feb-18
539979	DIGJAMLT	2-Feb-18	539435	RFSL	2-Feb-18
526783	DRAGARWQ	2-Feb-18	532983	RPGLIFE	2-Feb-18
500128	ELECTCAST	2-Feb-18	534597	RTNINFRA	2-Feb-18
536507	FLFL	2-Feb-18	533122	RTNPOWER	2-Feb-18
500153	GANESHBE	2-Feb-18	539346	SADBHIN	2-Feb-18
500155	GARDENSILK	2-Feb-18	530525	SHEETAL	2-Feb-18
532183	GAYATRI	2-Feb-18	520086	SICAL	2-Feb-18
500660	GLAXO	2-Feb-18	503229	SIMPLXREA	2-Feb-18
533150	GODREJPROP	2-Feb-18	514454	SOUTLAT	2-Feb-18
505576	GOLDCORP	2-Feb-18	503659	SW1	2-Feb-18
509546	GRAVISSHO	2-Feb-18	532390	TAJGVK	2-Feb-18
506076	GRINDWELL	2-Feb-18	500800	TATAGLOBAL	2-Feb-18
539522	GROVY	2-Feb-18	513434	TATAMETALI	2-Feb-18
539336	GUJGAS	2-Feb-18	500413	THOMASCOOK	2-Feb-18
507960	GUJHOTE	2-Feb-18	530475	TINNARUBR	2-Feb-18
532855	HARYNACAP	2-Feb-18	532375	TIPSINDLTD	2-Feb-18
509073	HATHWAYB	2-Feb-18	514236	TRUPTWI	2-Feb-18
500440	HINDALCO	2-Feb-18	507747	TTKHEALTH	2-Feb-18
522073	HITECHGEAR	2-Feb-18	532371	TTML	2-Feb-18
540750	IEX	2-Feb-18	532478	UBL	2-Feb-18
509162	INDAG	2-Feb-18	524408	UNIVSTAR	2-Feb-18
523586	INDTONER	2-Feb-18	500238	WHIRLPOOL	2-Feb-18
539083	INOXWIND	2-Feb-18	590013	XPROINDIA	2-Feb-18
505100	INRADIA	2-Feb-18	511601	YASHMGM	2-Feb-18

512381	ZNIVEMER	2-Feb-18	506105	STANROS	3-Feb-18
512587	ZODJRDMKJ	2-Feb-18	519483	TAIIND	3-Feb-18
524208	AARTIIND	3-Feb-18	539871	THYROCARE	3-Feb-18
530499	AKCAPIT	3-Feb-18	532477	UNIONBANK	3-Feb-18
532141	ANDHRACEMT	3-Feb-18	532867	V2RETAIL	3-Feb-18
539469	APUNKA	3-Feb-18	524200	VINATIORGA	3-Feb-18
526662	ARENTERP	3-Feb-18	534392	VSSL	3-Feb-18
511605	ARIHCAPM	3-Feb-18	514470	WINSOMTX	3-Feb-18
524695	ASIANFR	3-Feb-18	507817	WIREFABR	3-Feb-18
532330	BIOPAC	3-Feb-18	505872	WPIL	3-Feb-18
531595	CGCL	3-Feb-18	532039	ZENOTECH	3-Feb-18
507515	CJGEL	3-Feb-18	533339	ZENTEC	3-Feb-18
531460	CONTICON	3-Feb-18	539661	ACEMEN	5-Feb-18
539527	CREATIVE	3-Feb-18	539391	ACME	5-Feb-18
517437	DUTRON	3-Feb-18	517041	ADORWELD	5-Feb-18
524226	GAEL	3-Feb-18	506767	ALKYLAMINE	5-Feb-18
539206	GVBL	3-Feb-18	530799	ANNAINFRA	5-Feb-18
517077	INDAGIV	3-Feb-18	540616	ARTEMIS	5-Feb-18
532341	IZMO	3-Feb-18	513401	ASHIS	5-Feb-18
524330	JAYAGROGN	3-Feb-18	540788	ASPIRA	5-Feb-18
532644	JKCEMENT	3-Feb-18	506820	ASTRAZEN	5-Feb-18
505750	JOSTS	3-Feb-18	540649	AVADHSUGAR	5-Feb-18
517206	LUMAXIND	3-Feb-18	519105	AVTNPL	5-Feb-18
539519	MAYUKH	3-Feb-18	500042	BASF	5-Feb-18
523792	MAZDALTD	3-Feb-18	500530	BOSCHLTD	5-Feb-18
524709	NACLIND	3-Feb-18	532548	CENTURYPLY	5-Feb-18
540769	NIACL	3-Feb-18	540310	CFL	5-Feb-18
506532	NITTAGELA	3-Feb-18	521210	CITYMAN	5-Feb-18
526747	PGFOILQ	3-Feb-18	540678	COCHINSHIP	5-Feb-18
500459	PGHH	3-Feb-18	500830	COLPAL	5-Feb-18
523642	PIIND	3-Feb-18	508814	COSMOFILMS	5-Feb-18
531688	PRITHVIEXCH	3-Feb-18	526821	DAICHI	5-Feb-18
539359	PRITKAUTO	3-Feb-18	532700	ENIL	5-Feb-18
519014	PRSNTIN	3-Feb-18	531508	EVEREADY	5-Feb-18
507966	RASRESOR	3-Feb-18	508954	FINKURVE	5-Feb-18
530517	RELAXO	3-Feb-18	530023	FORTUNEF	5-Feb-18
533470	RUSHIL	3-Feb-18	540647	GANGESSEC	5-Feb-18
506906	SCBL	3-Feb-18	531608	GORANIN	5-Feb-18
530075	SELAN	3-Feb-18	501455	GREAVESCOT	5-Feb-18
502450	SESHAPAPER	3-Feb-18	523836	GUJRAFIA	5-Feb-18
513709	SHILGRAVQ	3-Feb-18	506879	GUJTHEM	5-Feb-18
539584	SIPTL	3-Feb-18	538652	HCLTD	5-Feb-18
526479	SKYIND	3-Feb-18	503881	HINDSYNTEX	5-Feb-18
513418	SMFIL	3-Feb-18	540530	HUDCO	5-Feb-18
508905	SMIFS	3-Feb-18	500106	IFCI	5-Feb-18
522152	SOLIMAC	3-Feb-18	517380	IGARASHI	5-Feb-18
516038	SOMAPPR	3-Feb-18	531594	INCON	5-Feb-18
524667	SOTL	3-Feb-18	512405	IPOWER	5-Feb-18

532642	JSWHL	5-Feb-18
500234	KAKATCEM	5-Feb-18
533451	KARMAENG	5-Feb-18
518011	KEERTHI	5-Feb-18
533302	KICL	5-Feb-18
502150	KLYNCEM	5-Feb-18
500235	KSL	5-Feb-18
531842	LAHOTIOV	5-Feb-18
526947	LAOPALA	5-Feb-18
514036	LOYALTEX	5-Feb-18
532906	MAANALU	5-Feb-18
500268	MANALIPETC	5-Feb-18
532654	MCLEODRUSS	5-Feb-18
522241	MMFL	5-Feb-18
533080	MOLDTKPAC	5-Feb-18
539819	MUDRA	5-Feb-18
508670	NEAGI	5-Feb-18
504378	NYSSACORP	5-Feb-18
533317	OMKARCHEM	5-Feb-18
524820	PANAMAPET	5-Feb-18
503031	PENINLAND	5-Feb-18
506605	POLYCHEM	5-Feb-18
540717	PQIF	5-Feb-18
514354	PREMIERPOL	5-Feb-18
509220	PTL	5-Feb-18
532441	RAINBOWDQ	5-Feb-18
506975	RAJSPTR	5-Feb-18
500354	RAJSREESUG	5-Feb-18
532826	RAJTV	5-Feb-18
500358	RAMAPETRO	5-Feb-18
530271	RICHUNV	5-Feb-18
515043	SAINTGOBAIN	5-Feb-18
520075	SAMKRG	5-Feb-18
530617	SAMPRE	5-Feb-18
538992	SAPL	5-Feb-18
540203	SFL	5-Feb-18
530295	SHRAJOI	5-Feb-18
505515	SHYMINV	5-Feb-18
512131	SIGNETIND	5-Feb-18
540679	SMSLIFE	5-Feb-18
538943	SONAL	5-Feb-18
519242	SRDAPRT	5-Feb-18
532879	SSLEL	5-Feb-18
501110	SUNRINV	5-Feb-18
500570	TATAMOTORS	5-Feb-18
570001	TATAMTRDVR	5-Feb-18
534369	TBZ	5-Feb-18
501242	TCIFINANCE	5-Feb-18
530199	THEMISMED	5-Feb-18

504973	TIFHL	5-Feb-18
522113	TIMKEN	5-Feb-18
506808	TUTIALKA	5-Feb-18
539874	UJJIVAN	5-Feb-18
506690	UNICHEMLAB	5-Feb-18
526799	UNQTYMI	5-Feb-18
517146	USHAMART	5-Feb-18
522267	VJLAXMIE	5-Feb-18
533452	WEIZFOREX	5-Feb-18
505533	WESTLIFE	5-Feb-18
507892	WINSOMEDJ	5-Feb-18
511642	WISEC	5-Feb-18
506178	ZKHATAUE	5-Feb-18
540025	ADVENZYMES	6-Feb-18
532774	AFL	6-Feb-18
532683	AIAENG	6-Feb-18
535467	AIFL	6-Feb-18
532633	ALLSEC	6-Feb-18
523537	APMIN	6-Feb-18
500877	APOLLOTYRE	6-Feb-18
512195	BENTCOM	6-Feb-18
509480	BERGEPAIN	6-Feb-18
539662	BFLAFL	6-Feb-18
535620	BINNYMILLS	6-Feb-18
500060	BIRLACABLE	6-Feb-18
500067	BLUESTARCO	6-Feb-18
539304	CANOPYFIN	6-Feb-18
500870	CASTROLIND	6-Feb-18
500280	CENTENKA	6-Feb-18
530191	CHROMATIC	6-Feb-18
533288	CLARIS	6-Feb-18
530843	CUPID	6-Feb-18
539596	DELTA	6-Feb-18
500089	DICIND	6-Feb-18
523708	EIMCOELECO	6-Feb-18
511716	ESCORTSFIN	6-Feb-18
523672	FLEXFO	6-Feb-18
513108	GANDHITUBE	6-Feb-18
512443	GANONTR	6-Feb-18
532764	GEECEE	6-Feb-18
530263	GLOBALCA	6-Feb-18
505255	GMM	6-Feb-18
500690	GSFC	6-Feb-18
530001	GUJALKALI	6-Feb-18
538567	GULFOILLUB	6-Feb-18
519552	HERITGFOOD	6-Feb-18
500182	HEROMOTOCO	6-Feb-18
526683	HOTELRUGBY	6-Feb-18
531314	INTCAPM	6-Feb-18

Earning Estimate Q3FY18

BSE CODE	NSE CODE	Sales Rs Cr	Sales YoY	Pat Rs Cr	PAT YoY
30-Jan-18	ASHOKA	624	19.00	42	(2.70)
30-Jan-18	BEL	2380	14.10	305	(18.50)
30-Jan-18	BHARATFIN	2459	43.60	791	42.40
30-Jan-18	CHOLAFIN	751	24.30	221	36.10
30-Jan-18	GODREJCP	2750	15.00	422	21.00
30-Jan-18	IOC	120639	29.60	5600	40.20
30-Jan-18	JAGRAN	587	(2.50)	89	(8.50)
30-Jan-18	MANPASAND	139	36.00	10	114.20
30-Jan-18	OBEROIRLTY	339	34.40	113	33.20
30-Jan-18	TVSMOTORS	3583	20.10	159	19.50
31-Jan-18	APLLTD	800	3.90	94	9.00
31-Jan-18	ARVIND	2676	14.60	77	(1.10)
31-Jan-18	DABUR	2069	12.00	360	22.40
31-Jan-18	EQUITAS	240	4.60	15	(65.90)
31-Jan-18	ESCORT	1246	14.00	75	35.50
31-Jan-18	EXIDEIND	1986	15.10	135	(10.90)
31-Jan-18	ICICIBANK	5847	9.00	2225	(8.90)
31-Jan-18	JSWSTEEL	17144	22.30	1598	118.80
31-Jan-18	LT	28950	10.10	1430	47.00
31-Jan-18	NTPC	19960	2.90	2706	20.60
31-Jan-18	PVR	618	15.00	40	68.70
31-Jan-18	VEDL	23203	19.50	2412	29.20
1-Feb-18	ASHOKLEY	6948	53.80	402	148.70
1-Feb-18	BAJAJFINSV	5563	22.70	224	24.00
1-Feb-18	CUMMINSIND	1431	5.60	210	6.00
1-Feb-18	POWERGRID	7179	10.40	2167	12.30
1-Feb-18	TITAN	4605	20.00	326	28.70
2-Feb-18	UBL	1189	16.00	67	31.40
2-Feb-18	BAJAJ-AUTO	6211	22.60	1053	13.90
2-Feb-18	GLAXO	786	14.00	108	207.80
2-Feb-18	HINDALCO	27977	15.20	1120	278.20
2-Feb-18	MRPL	13275	15.70	597	5.50
2-Feb-18	NAUKRI	226	21.40	69	46.40
3-Feb-18	JKCEMENT	1126	26.80	72	9.40
3-Feb-18	PGHH	766	19.00	153	1.80
3-Feb-18	PIIND	600	20.00	97	3.20
3-Feb-18	UNIONBANK	2412	12.90	123	18.10

Result Q3FY18

BSE CODE	NSE CODE	Sales Rs Cr	Sales YoY	Pat Rs Cr	PAT YoY
500302	PEL	2858	22.05	1374	240.03
532927	ECLERX	340	4.67	57	(33.26)
533248	GPPL	163	7.72	50	(22.68)
509488	GRAPHITE	933	176.41	340	1356.07
533257	INDOSOLAR	52	(59.19)	92	(581.68)
530965	IOC	130865	40.56	7883	97.33
532771	JHS	44	94.62	2	45.88

500219	JISLJAEQS	1890	31.07	45	546.62
530163	KERALAYUR	12	32.17	1	29.29
500250	LGBBROSLTD	334	17.54	36	157.10
532313	MAHLIFE	168	(21.00)	27	(22.94)
539207	MANPASAND	143	42.93	12	65.61
532504	NAVINFLUOR	221	43.97	48	133.03
532698	NITINSPIN	287	15.69	17	9.89
532391	OPTOCIRCUI	59	(10.41)	8	(122.86)
532939	RPOWER	2495	(10.19)	280	1.68
531548	SOMANYCERA	382	(9.01)	14	(30.62)
500403	SUNDRMFAST	848	19.57	93	22.95
517168	SUBROS	449	21.31	16	400.92
509930	SUPREMEIND	1278	15.43	104	2.88
530239	SUVEN	163	41.03	35	42.52
539658	TEAMLEASE	918	14.95	19	61.42
532343	TVSMOTOR	3685	23.50	177	33.05
533271	ASHOKA	659	25.75	52	21.30
532380	BABA	0	(25.00)	(0)	(138.63)
500049	BEL	2453	26.30	301	(19.37)
533228	BHARATFIN	504	23.16	163	13.86
526612	BLUEDART	705	(2.14)	45	58.82
511243	CHOLAFIN	1404	19.25	228	39.66
500840	EIHOTEL	362	0.14	41	(24.36)
532178	ENGINERSIN	473	45.63	106	24.40
523754	EPCIN	54	6.23	3	(50.00)
534804	CARERATING	75	12.98	38	(16.92)
511676	GICHSGFIN	281	11.20	42	22.54
532424	GODREJCP	2603	8.84	430	22.20
505726	IFBIND	532	17.01	17	10.72
532705	JAGRAN	598	(0.60)	87	(11.32)
532162	JKPAPER	841	31.85	70	95.76
533273	OBEROIRLTY	356	41.27	121	42.78
530365	ORIENTBELL	166	13.48	4	62.21
523648	PLASTIBLEN	140	1.76	(0)	(103.63)
533107	RNAVAL	54	(55.87)	(166)	25.32

Economic Calendar

Country	Monday 29th Jan 18	Tuesday 30th Jan 18	Wednesday 31th Jan 18	Thursday 1st Feb 18	Friday 2nd Feb 18
US	Core PCE Price Index m/m , Personal Spending m/m, Personal Income m/m	S&P/CS Composite-20 HPI y/y , CB Consumer Confidence	Challenger Job Cuts y/y , Employment Cost Index q/q , Chicago PMI , Pending Home Sales m/m , Crude Oil Inventories , FOMC Statement , Federal Funds Rate	ADP Non-Farm Employment Change , Unemployment Claims , Prelim Nonfarm Productivity q/q , Prelim Unit Labor Costs q/q , Final Manufacturing PMI , ISM Manufacturing PMI , Construction Spending m/m , ISM Manufacturing Prices , Natural Gas Storage , Total Vehicle Sales.	Average Hourly Earnings m/m , Non-Farm Employment Change, Unemployment Rate , Factory Orders m/m
UK/EURO ZONE	French Consumer Spending m/m	German Retail Sales m/m , French Prelim CPI m/m , Spanish Flash CPI y/y , Italian Monthly Unemployment Rate , Net Lending to Individuals m/m ,Prelim Flash GDP q/q , 10-y Bond Auction	CPI Flash Estimate y/y , Core CPI Flash Estimate y/y, Unemployment Rate, French Flash GDP q/q	Manufacturing PMI , Spanish Manufacturing PMI , Italian Manufacturing PMI , French Final Manufacturing PMI , German Final Manufacturing PMI , Final Manufacturing PMI	Construction PMI , PPI m/m
INDIA				Auto sales No , Niekki Manufacturing PMI no & Union Budget	



Narnolia Securities Ltd

201 | 2nd Floor | Marble Arch Building | 236B-AJC Bose
Road | Kolkata-700 020 , Ph : 033-40501500

email: narnolia@narnolia.com,
website : www.narnolia.com

Risk Disclosure & Disclaimer: This report/message is for the personal information of the authorized recipient and does not construe to be any investment, legal or taxation advice to you. Narnolia Securities Ltd. (Hereinafter referred as NSL) is not soliciting any action based upon it. This report/message is not for public distribution and has been furnished to you solely for your information and should not be reproduced or redistributed to any other person in any form. The report/message is based upon publicly available information, findings of our research wing "East wind" & information that we consider reliable, but we do not represent that it is accurate or complete and we do not provide any express or implied warranty of any kind, and also these are subject to change without notice. The recipients of this report should rely on their own investigations, should use their own judgment for taking any investment decisions keeping in mind that past performance is not necessarily a guide to future performance & that the value of any investment or income are subject to market and other risks. Further it will be safe to assume that NSL and /or its Group or associate Companies, their Directors, affiliates and/or employees may have interests/ positions, financial or otherwise, individually or otherwise in the recommended/mentioned securities/mutual funds/ model funds and other investment products which may be added or disposed including & other mentioned in this report/message.