

SGX NIFTY : 7743 (2 Pt Down)

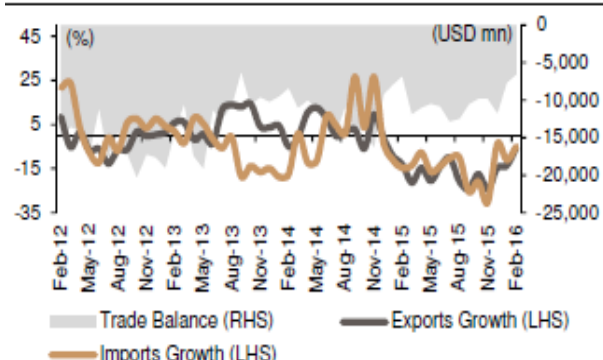
Quote of the Day

"It's true, of course, that, in the long run, the scoreboard for investment decisions is market price. But prices will be determined by future earnings. In investing, just as in baseball, to put runs on the scoreboard one must watch the playing field, not the scoreboard."

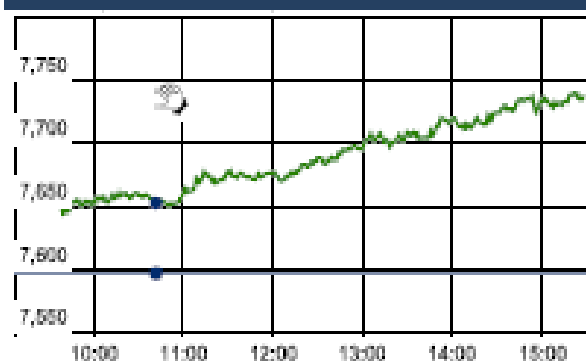
Warren Buffett

Chart of the Day

Trade Deficit %



Index Action Nifty (30th Mar 16)



Index

Contents	Page	Coverage
News	2	Update
Economic Calendar	3	Update

Market

Name	Value	Change
Sensex	25,338.58	438.12
Nifty	7735.20	138.20
DOW	17,602.30	120.81
NASDAQ	4,869.29	22.67
CAC	4,444.42	77.75
DAX	10,046.61	158.61
FTSE	6,203.17	97.27
NIKKEI	16,890.04	11.08
HANG SENG	20,748.68	(54.11)
EW ALL SHARE	13293.12	231.30

Instituional Turnover

FII

Investor	Buy(Cr.)	Sale(Cr.)	Net(Cr.)
30-Mar-16	5866.32	4423.85	1442.47
Mar,16	77057.77	61888.65	15169.12
2016	220195.23	231238.31	(11043.08)

DII

Investor	Buy(Cr.)	Sale(Cr.)	Net(Cr.)
30-Mar-16	1907.34	2304.24	(396.90)
Mar,16	21356.30	30887.02	(9530.72)
2016	103271.27	88351.22	14920.05

Commodity Price

Commodity/Currencies	Value	
GOLD	28407.00	↓
SILVER	36329.00	↓
CRUDEOIL	39.12	↑
COPPER	321.95	↓
NATURALGAS	132.80	↑
DOLLAR/RS.	66.37	↓
EURO/RS.	75.10	↓
POUND/RS.	95.23	↓

Market Snapshot

Top Price Performers

Top Performers 1D	% Change	Top Performers 1W	% Change	Top Performers 1M	% Change
BIRLACOT	25.00	KSOILS	49.41	DWARKESH	96.96
KIRIINDUS	19.99	SUPREMEINF	31.12	UPERGANGES	94.82
HINDUJAFO	19.94	KAKATCEM	30.74	WEBELSOLAR	86.33
DIAPOWER	19.42	SATRAPROP	30.22	THIRUSUGAR	78.39
REMIMETAL	19.41	UPERGANGES	28.38	PRAKASHCON	75.87

Worst Performers 1D	% Change	Worst Performers 1W	% Change	Worst Performers 1M	% Change
CALSREF	(16.67)	RAINBOWPAP	(35.85)	RAINBOWPAP	(47.77)
ABGSHIP	(10.21)	ABGSHIP	(35.05)	AMTEKINDIA	(40.12)
KSLIND	(9.60)	SHREEKRPOL	(28.21)	SHRENUJ	(40.09)
USHDEVINT	(9.54)	TFL	(22.53)	BLBLIMITED	(38.91)
BLBLIMITED	(8.19)	RAMKY	(20.54)	INDINFO	(37.04)

Top News

- **Dena Bank** has raised Rs 65 crore by issuing over 2 crore shares to LIC on preferential basis. Andhra Bank also said it has sold over 4.23 percent stake to LIC on a preferential allotment, without disclosing the amount. Post the acquisition of additional shares in Dena Bank, LIC's stake in the lender has gone up to 14.5 percent from 11.63 percent earlier.

- **BHEL** has commissioned first 250 MW unit at coal-based Nabinagar thermal power plant of Bhartiya Rail Bijlee Company Ltd in Aurangabad district of Bihar. The 250 MW unit has been commissioned at the upcoming, greenfield 1,000 MW Nabinagar Thermal Power Project (4x250 MW), being set up by Bhartiya Rail Bijlee Company Ltd (BRBCL), a joint venture of NTPC Limited and the Indian Railways

- **Zydus Cadila** has received final approval from the US Food and Drug Administration to market Acyclovir capsules USP, 200 mg. The drug will be produced at formulations manufacturing facility at SEZ, Ahmedabad.

- **Gammon India** its board will this week consider a proposal received from an investor for investment in the company's engineering procurement and construction business. A meeting of the board of directors of the company will be held on April 2, 2016, to consider a proposal received from an investor for investment in the company's Engineering Procurement & Construction (EPC) business

- **Tata Motors** signed an MoU with Maharashtra Ex-Servicemen Corporation (MESCO) for employment opportunities to ex-servicemen. The MoU was signed at the ongoing Defexpo 2016 here.

- **IL&FS Transportation Networks Ltd** said that it plans to raise Rs 425 crore through issuance of non-convertible debentures on a private placement basis. Committee of Directors had approved on March 30, 2016 the allotment of 4,250 rated, listed, redeemable, non-convertible debentures (the "debentures") of the face value of Rs 10,00,000 aggregating to Rs 425 crore on a private placement basis

- **IDBI Bank said it** has raised over Rs 848 crore by allotting equity shares to LIC on preferential basis. IDBI Bank referred Sebi's approval letter dated March 29, 2016, whereby the market regulator accepted Bank's request to allot shares to LIC on preferential basis.

- **Aurobindo Pharma** has received USFDA approval for Vancomycin Hydrochloride for injection. The company has received final approval from the US Food & Drug Administration (USFDA) to manufacture and market Vancomycin Hydrochloride for injection USP, 5 g/vial and 10 g/vial. This product is expected to be launched in the later part of FY16-17.

- **Chilean Retail Sales** rose to an annual rate of 7.4%, from 3.4% in the preceding month. Analysts had expected Chilean Retail Sales to fall to 3.2% last month.

- **Euro zone consumer confidence** fell to an annual rate of -10.0, from -8.8 in the preceding month. Analysts had expected Euro zone consumer confidence to fall -10.0 last month.

- **Euro zone business and consumer survey index** fell to 103.0, from 103.9 in the preceding month whose figure was revised up from 103.8. Analysts had expected the euro zone business and consumer survey index to remain unchanged at 103.8 last month.

- **Japan industrial production** fell to a seasonally adjusted -6.2%, from 3.7% in the preceding month. Analysts had expected industrial production to fall -6.0% last month.

- **New Zealand Building Consents** rose to a seasonally adjusted 10.8%, from -8.2% in the preceding month. Analysts had expected New Zealand Building Consents to rise to 5.0% last month.

Economic Calendar

Country	Monday 28th Mar 16	Tuesday 29th Mar 16	Wednesday 30th Mar 16	Thursday 31st Mar 16	Friday 1st April 16
US	S&P/CS Composite-20 HPI y/y , CB Consumer Confidence , Richmond Manufacturing Index	ADP Non-Farm Employment Change , Crude Oil Inventories .	Unemployment Claims , Chicago PMI, Natural Gas Storage .	Average Hourly Earnings m/m , Non-Farm Employment Change , Unemployment Rate, ISM Manufacturing PMI , Revised UoM Consumer Sentiment .	Labor Market Conditions Index m/m .
UK/EURO ZONE	German Retail Sales m/m , Spanish Flash CPI y/y , German Unemployment Change , M3 Money Supply y/y ,	German Prelim CPI m/m , French Consumer Spending m/m , Italian Monthly Unemployment Rate .	Current Account , Final GDP q/q , Net Lending to Individuals m/m , CPI Flash Estimate y/y , Core CPI Flash Estimate y/y , ECB Monetary Policy Meeting Accounts .	Manufacturing PMI , Unemployment Rate , Italian Manufacturing PMI , French Final Manufacturing PMI , German Final Manufacturing PMI .	Construction PMI , Spanish Unemployment Change , PPI m/m .
INDIA					



(Regn. No. : INP 000004011)

Narnolia Securities Ltd.

Narnolia Research Lab

Stellar IT Park | 5th Floor | Office Space No. 6 | Tower-II/nd Plot No. C-25 | Sector-62 | Noida | Ph : 0120-4215110

Central Strategy Desk - Kolkata

124 | 1st Floor | 7/1 Lords Sinha Road | Kolkata - 71
Ph : 033-22821500 | M : 93347 14418, 98302 69810