

### KEY LEVELS

Support 1 : 9838  
Support 2: 9782

Resistance : 10115  
Resistance 2: 10230

### Event Today

#### Today Result

BALRAMCHIN , BEL , CARBORUNIV  
CONCOR , GODREJCP , HEXAWARE  
INDIGO , JK PAPER , JPPOWER  
MAHABANK , RADIOCITY, RPOWER  
SHREECEM, SIEMENS, SINTEX  
SUNDRMFAST , TORNTPHARM  
UNIPHOS, UPL, VGUARD

#### Concall

Zuari Agro : 11:00 AM

Everest Inds, LICHSGFIN : 11:30 AM

Coromandel Int, Shakti Pumps : 2:30 AM,

IDFC, GE T&D India, GHCL : 4:00 PM,

Balkrishna Inds : 4:00 PM

Equitas Holdings : 4:30 PM

INDIGO : 5:00 PM , Godrej Cons : 4:45 PM

Torrent Pharma , Shriram Trans : 6:30 PM

#### Dividend

ADANIENT : Rs 0.4/-

ADANI PORTS : Rs 1.3/- , ASTRAL: Rs 0.3/-

DHUNINV : Rs 1.5/-

EICHERMOT : Rs 100/-

GABRIEL : Rs 0.85/-, INDOCO: 1.60/-

IRB : Rs 2.5/- , JCHAC : Rs 1.5/-

MENONBE : Rs 0.75/-, NILKAMAL: Rs 7/-

PANCARBON : Rs 10/-

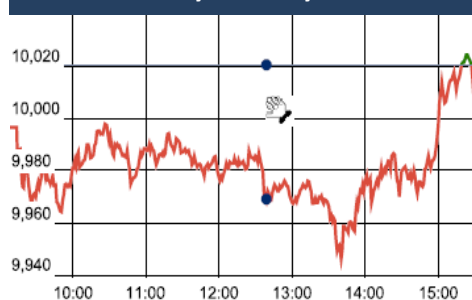
SANOFI : Rs 18/-

SIMPLXREA : Rs 0.80/-

TATACHEM : Rs 11/-

( Exdate : 31.7.2017)

### Nifty Intraday Chart



### Market Outlook

After opening with a green session, Nifty continuously rose to make a weekly high of 10114.85 on Thursday. However it was corrected to 9945 on Friday. At the end of the week the index closed at 10014.50. It had net gain of 1% over the previous week's close. The midcap and small cap indices also moved in line with the benchmark index and closed the week in green.

On the sectoral front, some buying interest was witnessed in Banking, Metal, Auto and Financial Services stocks while IT and Pharmaceutical indices have shown some weakness.

Nifty derivative range as suggested by structure of open interest at different strike price suggests 9800-10000 for remaining days of July series. Initial range suggested for August series is 9700-10000. Also at the money strangle premium for August series is Rs 267 much higher than how July series has started and this implies market participants assumes some volatility in August series. After correcting sharply in May, Nifty Small Cap Index made a new high on Friday suggesting sharp stock specific move will continue.

Among international development - Venezuela's sovereign debt saw sharp decline last week amid talk of US sanction ahead of Venezuela's president announcing to re-write its constitutions. Venezuela's GDP has already shrunk by about 32% since 2014 as it is dependent mostly on oil export. Any further negative development here could see higher volatility in commodity market across globe. Other important global event this week would be US Fed policy outcome on Wednesday on interest rate.

**Quote of the Day** : "The risk among any group of investors is that they only pay attention to what they already agree with. That's limiting in our opinion, and dangerous."

**Michael Mauboussin**

### Market

Market	Value	% Change
--------	-------	----------

#### Morning Traded Market

SGX NIFTY	10,008.00	-0.24%
NIKKIE	19921.16	-0.19%
HANG SENG	27,048.65	0.26%

#### Yesterday Closing Market

Sensex	32,309.88	-0.23%
Nifty	10,014.50	-0.06%
DOW	21,830.00	0.15%
NASDAQ	6,374.68	-0.12%
CAC	5,131.39	-1.08%
DAX	12,162.70	-0.41%
FTSE	7,368.37	-1.01%
EW ALL SHARE	18,075.62	0.03%

% Change in 1 day

### Commodity Price ( Yesterday Closing )

Commodity/Currencies	Value	% Change
GOLD	28580.00	0.37%
SILVER	38450.00	0.51%
CRUDEOIL	52.24	0.02%
NATURALGAS	189.50	-0.99%
DOLLAR/RS.	64.15	0.07%
EURO/RS.	75.16	0.15%
POUND/RS.	83.96	-0.27%

% Change in 1 day

### Institutional Turnover

#### FII

Investor	Buy(Cr.)	Sale(Cr.)	Net(Cr.)
28-Jul-17	5141	5364	(223)
Jul-17	99012	96350	2662
2017	748267	723251	25016

#### DII

Investor	Buy(Cr.)	Sale(Cr.)	Net(Cr.)
28-Jul-17	3627	3202	425
Jul-17	63047	60029	3018
2017	432494	409085	23409

**CHOLAFIN****"BUY"****31th July 2017**

We believe CHOLAFIN is well placed to reap the benefit of rise in growth of vehicle demand after temporarily impacted by BS4 norm and GST de-stocking. Coupled with its home loan finance we expect CHOLAFIN to register 18%-20% kind of AUM growth going in FY17. Apart from vehicle financing, housing finance and MSME finance which is comparatively small would provide boost to growth and margins in long run. CHOLAFIN has superior assets quality among its peers with GNPA at 4.7% on 90 dpd. We expect assets quality to remain stable and hence credit cost would be under control. With the improvement in productivity level, cost to income ratio is in declining trend which will boost the earnings going forward. We expect RoE in the range of 19%-20% and RoA of 2.9% in FY19. We value CHOLAFIN at Rs 1358 (3.5x FY19) and initiate BUY call in this stock

**Security and Intelligence Services (India) Ltd : IPO Note****"BUY"****31th July 2017**

SIS is the second largest security service provider in India. SIS is serving 11869 Client premises in India and 245 customer premises in Australia, employing more than 1.5 lac employees. SIS is addressing the right business need and has been able to command client trust by rendering prompt and value added services to the companies. There is a structural shift of demand towards outsourced security services because of growing demand from Corporates and Residential Housing. Business model is such that it works on a thin margin and huge working capital requirements though. On the valuation front, for post IPO FY18E RoE of 12%, the company is being offered at 5.8 times FY18 P/B Book Value. Keeping in mind, huge business opportunities, consistent growth and company's leadership in the segment, we recommend "SUBSCRIBE".

\*For details, refer to our daily report- *India Equity Analytics***Top News****Escorts concall highlights:**

- # 15-20% volume growth for Agri business; Growth in second half to be robust.
- # Construction Equipment business to grow at 10-12% going ahead and it will be EBITDA positive in FY18
- # Railways business to grow at 15-20% CAGR going ahead for next 3 years.
- # The company may post double digit margins in FY19
- # Capex guidance in the range of Rs.140-150 crore.
- # Effective tax rate 30-31%
- # Exports to be 20% of the total tractor volumes by FY20 (currently 3-4%).

**Biocon Concall update:**

- Biocon has received DGCI(Indian Drug regulatory Authority) approval for cancer drug Bevacizumab.
- Witnessed sluggish sales in API on account of channel de-stocking due to GST.
- Syngene growth is muted on account of Fire broke out in dec 2016, full ramp up after fire is under progress.
- Commercialization of Malasian facility added expenditure and depreciation in Q1.
- R&D exp. In Q1 is Rs.96 Cr.
- Forex gain of Rs.17 Cr in Q1.
- Management estimates market size of Trustuzuab is USD 2.7 billion in US market/
- US FDA Oncologic Drugs Advisory Committee (ODAC) recommendation for approval of our biosimilar Trastuzumab.
- Company received GMP compliance certification from France's ANSM for its biologics Drug Substance facility for manufacturing Trastuzumab and Pegfilgrastim. However Drug Product facility will require re-inspection.

**ATFL result concall for Q1FY18:**

- Lost Rs 16 cr of sales primarily in the month Jun due to GST.
- If company will not take GST impact, than sales growth would have been 4-5%.
- The company reduced advertisement expenses by Rs 3.5cr in Q1FY18.
- Employee cost was higher due to investment in distribution reach.
- Ad&P expenses: The company does Ad&P expenses in the range of Rs 6-7 cr on peanut butter, ACT-2:Rs12-15cr, Sundrop: Rs 4cr. for year. Expects same for FY18.
- Distribution Reach: Planning to add 50000 stores in FY18.
- All Indian snacks will be launched in the name of Sundrop and all western snacks will be launched in the name of ACT-2. Company will launch one new product under the brand of Sundrop in next 3-4 months.
- Western snacks has better gross margin than Indian snacks.
- Company has done enough capital expansion till now. Now company will accumulate cash.
- Chitture plant will be operational in Middle of next year.
- Capacity utilization of Food business: 40%. Next focus will be increasing capacity utilization.
- Company sees strong growth opportunity in ready to eat pop corn business.◊◊

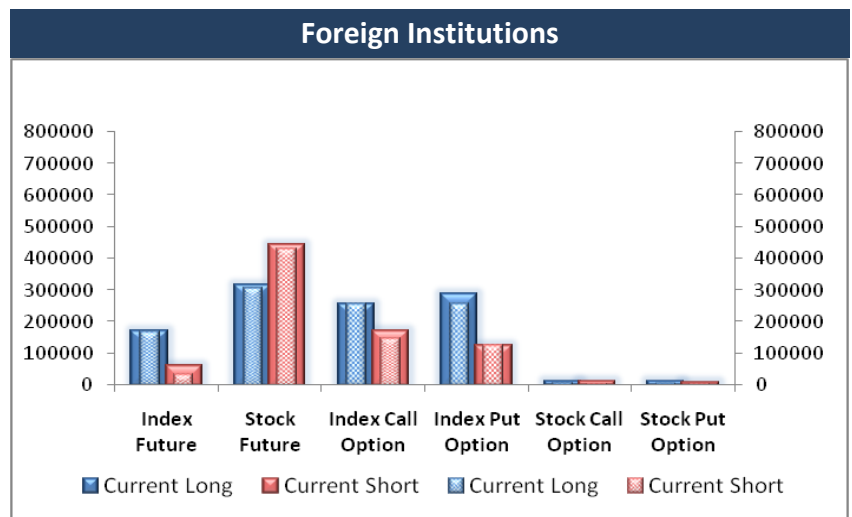
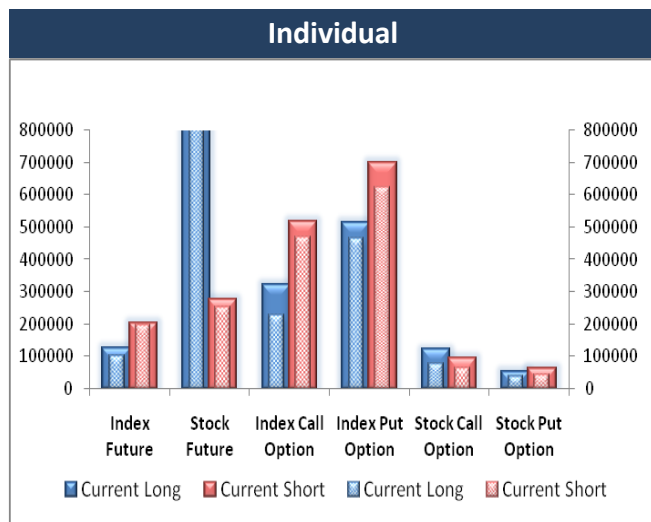
**Glenmark Concall update:**

- Business from LATM will gain momentum from Q3.
- Growth expectation for FY18 is 15%
- Indian business to be normalized and grow at 10-15% in Q2 with better margins.
- Debt repayment guidance for FY18- Rs. 300Cr
- 2 ANDA's were filed in Q1FY18 and plans to file 3 ANDA's in Q3.
- Management plans to file 2-3 significant filings in Respiratory segment in Q4 FY18.
- Planned R&D exp. For Full year FY18 is 11% of sales.
- Management expects 3-4 meaningful approvals in Q2.

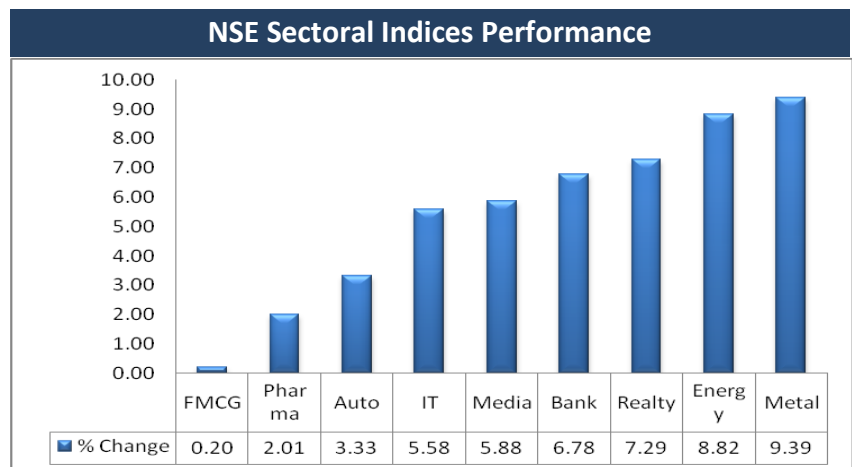
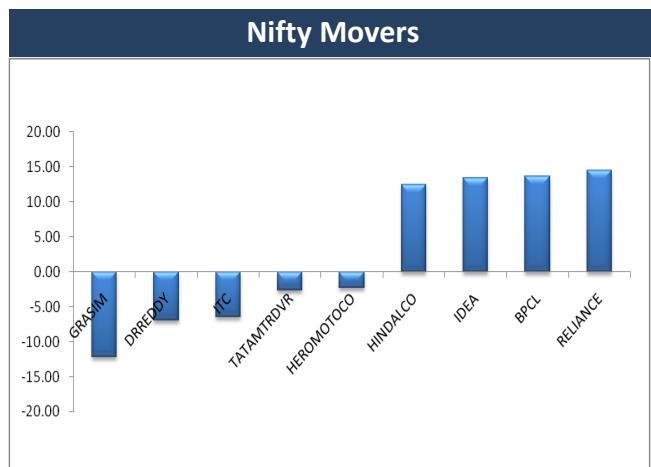
### Block Deal

Exchange	Deal Date	Company	Client Name	Deal Type	Quantity	Price
NSE	28-Jul-17	ASHIMASYN	ANKITA VISHAL SHAH	BUY	1209169	26.09
NSE	28-Jul-17	JPASSOCIAT	SHAASTRA SECURITIES TRADING PRIVATE LIMITED	BUY	15715805	29.55
NSE	28-Jul-17	LITL	JMP SECURITIES PVT LTD	BUY	10873664	1.18
NSE	28-Jul-17	MIRZAIINT	SAVASTHI INVESTMENTS LTD	BUY	438325	152.79
NSE	28-Jul-17	ASHIMASYN	ANKITA VISHAL SHAH	SELL	465169	26.15
NSE	28-Jul-17	EROSMEDIA	EROS WORLDWIDE FZ LLC	SELL	500000	234.2
NSE	28-Jul-17	ISFT	ROSE FINANCIERS AND COMMERCIALS PRIVATE LIMITED	SELL	135500	427.73
NSE	28-Jul-17	JPASSOCIAT	SHAASTRA SECURITIES TRADING PRIVATE LIMITED	SELL	15715805	29.6
NSE	28-Jul-17	LITL	JMP SECURITIES PVT LTD	SELL	21268878	1.19
NSE	28-Jul-17	MIRZAIINT	SAVASTHI INVESTMENTS LTD	SELL	1767457	151.13
NSE	28-Jul-17	RELIGARE	REXCIN FINANCE PVT LTD	SELL	950000	97.31
NSE	28-Jul-17	RELIGARE	TRIPOLI INVESTMENT AND TRADING	SELL	1000000	97
NSE	28-Jul-17	SUZLON	BNP PARIBAS ARBITRAGE	SELL	29946669	19.47

### F&O OPEN INTEREST ( Number of Contracts )



### MARKET MOVERS (1 MONTH CHANGE)



**Result Calendar Q1FY18**

Bse Code	Company Name	Date	Bse Code	Company Name	Date
538935	ABHIFIN	31-Jul-17	531206	KWALITYCL	31-Jul-17
511359	ADMANUM	31-Jul-17	532525	MAHABANK	31-Jul-17
537292	AGRITECH	31-Jul-17	530441	MAHAN	31-Jul-17
532475	APTECHT	31-Jul-17	539519	MAYUKH	31-Jul-17
539469	APUNKA	31-Jul-17	531146	MEDICAMEQ	31-Jul-17
523850	AXTEL	31-Jul-17	531821	MUNOTHFI	31-Jul-17
500038	BALRAMCHIN	31-Jul-17	511401	MUNOTHI	31-Jul-17
500039	BANCOINDIA	31-Jul-17	515037	MURUDCERA	31-Jul-17
500042	BASF	31-Jul-17	526831	NAINAMS	31-Jul-17
500049	BEL	31-Jul-17	537291	NATHBIOGEN	31-Jul-17
511698	BHAGYFN	31-Jul-17	502407	NATHPULP	31-Jul-17
524723	BIJHANS	31-Jul-17	530127	NPRFIN	31-Jul-17
500069	BNKCAP	31-Jul-17	509782	OSEASPR	31-Jul-17
531203	BRANDREAL	31-Jul-17	503031	PENINLAND	31-Jul-17
513375	CARBORUNIV	31-Jul-17	524046	PETPLST	31-Jul-17
530789	CEEJAY	31-Jul-17	538771	PINCON	31-Jul-17
521210	CITYMAN	31-Jul-17	519262	PRIMAGR	31-Jul-17
540481	CLFL	31-Jul-17	540366	RADIOCITY	31-Jul-17
531344	CONCOR	31-Jul-17	530807	REGALIAA	31-Jul-17
531067	CONTILI	31-Jul-17	532939	RPOWER	31-Jul-17
522295	CONTROLPR	31-Jul-17	539148	SHIVALIK	31-Jul-17
539681	DAL	31-Jul-17	500387	SHREECEM	31-Jul-17
511634	DUGARHOU	31-Jul-17	500550	SIEMENS	31-Jul-17
533704	ESSARSHPNG	31-Jul-17	502742	SINTEX	31-Jul-17
526468	EUROLED	31-Jul-17	512014	SOBME	31-Jul-17
530705	FLORATX	31-Jul-17	511218	SRTRANSFIN	31-Jul-17
530389	GEEFC	31-Jul-17	530565	SSLFINANCE	31-Jul-17
532309	GEPIL	31-Jul-17	513488	SSWRL	31-Jul-17
532424	GODREJCP	31-Jul-17	500403	SUNDRMFAST	31-Jul-17
539522	GROVY	31-Jul-17	533298	SURANASOL	31-Jul-17
530469	GSLSEC	31-Jul-17	517530	SURANAT&P	31-Jul-17
532425	GULCHEM	31-Jul-17	509917	TECHCON	31-Jul-17
532129	HEXAWARE	31-Jul-17	526576	TECHIN	31-Jul-17
532041	HINDBIO	31-Jul-17	526650	TFCILTD	31-Jul-17
538838	ICL	31-Jul-17	500420	TORNTPHARM	31-Jul-17
531672	INANISEC	31-Jul-17	531771	TOWASOK	31-Jul-17
539448	INDIGO	31-Jul-17	500251	TRENT	31-Jul-17
511208	IVC	31-Jul-17	500429	UNIPHOS	31-Jul-17
530405	JINDCAP	31-Jul-17	531762	UNJHAFOR	31-Jul-17
532162	JKPAPER	31-Jul-17	512070	UPL	31-Jul-17
533207	JPINFRATEC	31-Jul-17	511431	VAKRANGEE	31-Jul-17
532627	JPOWER	31-Jul-17	524038	VENLONENT	31-Jul-17
530915	JRFOODS	31-Jul-17	532953	VGUARD	31-Jul-17
507779	KANPRPLA	31-Jul-17	511333	VLSFINANCE	31-Jul-17
532067	KILPEST	31-Jul-17	501370	WALCHPF	31-Jul-17
524019	KINGFA	31-Jul-17	507817	WIREFABR	31-Jul-17

532056	ADIEXRE	01-Aug-17	532779	TORNTPOWER	01-Aug-17
517552	ADVNCMIC	01-Aug-17	538597	TTIENT	01-Aug-17
531681	AMARDEE	01-Aug-17	504358	TURBO	01-Aug-17
531991	AMRAAGRI	01-Aug-17	505533	WESTLIFE	01-Aug-17
530899	ASIAPAK	01-Aug-17	500043	BATAINDIA	02-Aug-17
540621	BHAGYAPROP	01-Aug-17	532938	CAPF	02-Aug-17
532548	CENTURYPLY	01-Aug-17	526821	DAICHI	02-Aug-17
523367	DCMSHRIRAM	01-Aug-17	526315	DIVSHKT	02-Aug-17
505703	DECANBRG	01-Aug-17	532922	EDELWEISS	02-Aug-17
533137	DEN	01-Aug-17	523708	EIMCOELECO	02-Aug-17
526971	DHOOTIN	01-Aug-17	513452	ELANGO	02-Aug-17
500840	EIHOTEL	01-Aug-17	531162	EMAMILTD	02-Aug-17
524768	EMMESSA	01-Aug-17	532700	ENIL	02-Aug-17
530929	EUROASIA	01-Aug-17	509563	GARWAMAR	02-Aug-17
526227	FILATEX	01-Aug-17	533150	GODREJPROP	02-Aug-17
531854	FUNWTRD	01-Aug-17	526797	GREENPLY	02-Aug-17
532726	GALLANTT	01-Aug-17	508486	HAWKINCOOK	02-Aug-17
533265	GALLISPAT	01-Aug-17	509631	HEG	02-Aug-17
509024	GOLDLEG	01-Aug-17	517380	IGARASHI	02-Aug-17
540602	GTPL	01-Aug-17	500210	INGERRAND	02-Aug-17
531301	HIGHSTREE	01-Aug-17	524592	JDORGOCHEM	02-Aug-17
501298	INDPRUD	01-Aug-17	539276	KAYA	02-Aug-17
500228	JSWSTEEL	01-Aug-17	532714	KEC	02-Aug-17
506938	KAPPH	01-Aug-17	531163	KEMISTAR	02-Aug-17
507912	LKPFIN	01-Aug-17	504258	LAKSELEC	02-Aug-17
539227	LOYAL	01-Aug-17	500257	LUPIN	02-Aug-17
531642	MARICO	01-Aug-17	524000	MAGMA	02-Aug-17
513721	MFSINTRCRP	01-Aug-17	539940	MAXVIL	02-Aug-17
503772	MODWOOL	01-Aug-17	531146	MEDICAMEQ	02-Aug-17
532391	OPTOCIRCUI	01-Aug-17	532990	METKORE	02-Aug-17
502420	ORIENTPPR	01-Aug-17	533088	MHRIL	02-Aug-17
538646	PARNAMI	01-Aug-17	539767	MNIL	02-Aug-17
534809	PCJEWELLER	01-Aug-17	539551	NH	02-Aug-17
500302	PEL	01-Aug-17	538772	NIYOGIN	02-Aug-17
532898	POWERGRID	01-Aug-17	532742	PAUSHAKLTD	02-Aug-17
539359	PRITIKAUTO	01-Aug-17	532461	PNB	02-Aug-17
533107	RDEL	01-Aug-17	532460	PONNIERODE	02-Aug-17
532498	SHRIRAMCIT	01-Aug-17	500390	RELINFRA	02-Aug-17
531307	SRK	01-Aug-17	540143	SAGARSOFT	02-Aug-17
532154	SUNSHINE	01-Aug-17	539148	SHIVALIK	02-Aug-17
531752	SUNTECHNO	01-Aug-17	520086	SICAL	02-Aug-17
530585	SWASTIKA	01-Aug-17	523606	SIKA	02-Aug-17
512359	SWORDEDGE	01-Aug-17	532725	SOLARINDS	02-Aug-17
532390	TAJGVK	01-Aug-17	534369	TBZ	02-Aug-17
501301	TATAINVEST	01-Aug-17	532349	TCI	02-Aug-17
533393	TCIDEVELOP	01-Aug-17	523878	TOTEX	02-Aug-17
540212	TCIEXP	01-Aug-17	532505	UCOBANK	02-Aug-17
532262	TCIIND	01-Aug-17	500575	VOLTAS	02-Aug-17
532755	TECHM	01-Aug-17	509966	VSTIND	02-Aug-17

532893	VTMLTD	02-Aug-17	532370	RAMCOSYS	03-Aug-17
532300	WOCKPHARMA	02-Aug-17	532735	RSYSTEMINT	03-Aug-17
505163	ZFSTEERING	02-Aug-17	531869	SACHEMT	03-Aug-17
539661	ACEMEN	03-Aug-17	539252	SCFL	03-Aug-17
532406	AVANTEL	03-Aug-17	512529	SEQUENT	03-Aug-17
500031	BAJAJELEC	03-Aug-17	539520	SHAILJA	03-Aug-17
501425	BBTC	03-Aug-17	524336	SHHARICH	03-Aug-17
500878	CEATLTD	03-Aug-17	505592	SHKRISHNAB	03-Aug-17
500830	COLPAL	03-Aug-17	539334	SHREEPUSHK	03-Aug-17
500480	CUMMINSIND	03-Aug-17	532007	SHVFL	03-Aug-17
505700	ELECON	03-Aug-17	530289	SPCAPIT	03-Aug-17
500128	ELECTCAST	03-Aug-17	540575	STARCEMENT	03-Aug-17
533477	ENKEIWHEL	03-Aug-17	531901	STERWEB	03-Aug-17
500133	ESABINDIA	03-Aug-17	508969	SULABEN	03-Aug-17
500650	EXCELINDUS	03-Aug-17	506854	TANFACIND	03-Aug-17
531375	GCCLINP	03-Aug-17	540595	TEJASNET	03-Aug-17
501455	GREAVESCOT	03-Aug-17	500114	TITAN	03-Aug-17
530001	GUJALKALI	03-Aug-17	531846	TRINITYLEA	03-Aug-17
511441	GUJCREC	03-Aug-17	539874	UJJIVAN	03-Aug-17
509073	HATHWAYB	03-Aug-17	507880	VIPIND	03-Aug-17
500185	HCC	03-Aug-17	532144	WELCORP	03-Aug-17
534328	HEXATRADEX	03-Aug-17	530697	ZENLABS	03-Aug-17
500184	HSCL	03-Aug-17	512017	ZEXDONTR	03-Aug-17
532835	ICRA	03-Aug-17	523204	ABAN	04-Aug-17
517526	INDITALIA	03-Aug-17	505665	ABCBEARS	04-Aug-17
533676	INDOTHAI	03-Aug-17	523411	ADCINDIA	04-Aug-17
531314	INTCAPM	03-Aug-17	522273	AHMDSTE	04-Aug-17
536868	INTELSOFT	03-Aug-17	533029	ALKALI	04-Aug-17
530965	IOC	03-Aug-17	526397	ALPHAGEO	04-Aug-17
500378	JINDALSAW	03-Aug-17	530133	AMCOIND	04-Aug-17
500380	JKLAKSHMI	03-Aug-17	532418	ANDHRABANK	04-Aug-17
532642	JSWHL	03-Aug-17	500877	APOLLOTYRE	04-Aug-17
531413	KIRANPR	03-Aug-17	540616	ARTEMIS	04-Aug-17
500245	KIRLFER	03-Aug-17	500101	ARVIND	04-Aug-17
523207	KOKUYOCLN	03-Aug-17	505029	ATLASCYCLE	04-Aug-17
531664	MAHAV	03-Aug-17	539834	BALGOPAL	04-Aug-17
501473	MALTC	03-Aug-17	522004	BATLIBOI	04-Aug-17
538970	MANVIJAY	03-Aug-17	512195	BENTCOM	04-Aug-17
539289	MJCO	03-Aug-17	509480	BERGEPAIN	04-Aug-17
532376	MRO-TEK	03-Aug-17	539662	BFLDEV	04-Aug-17
532864	NELCAST	03-Aug-17	524396	BIOFILCHEM	04-Aug-17
535458	NIBL	03-Aug-17	526925	BOBSHELL	04-Aug-17
530175	ODYSSEY	03-Aug-17	505690	BRADYM	04-Aug-17
540173	PNBHOUSING	03-Aug-17	504671	CHASBRT	04-Aug-17
526773	PRESSURS	03-Aug-17	500110	CHENNPETRO	04-Aug-17
512217	PRISMMEDI	03-Aug-17	532992	CHLLTD	04-Aug-17
509220	PTL	03-Aug-17	500096	DABUR	04-Aug-17
500260	RAMCOCEM*	03-Aug-17	539770	DARJEELING	04-Aug-17
532369	RAMCOIND	03-Aug-17	532760	DEEPIND	04-Aug-17

539405	DITCO	04-Aug-17	512527	SUPER	04-Aug-17
504908	DUNCANENG	04-Aug-17	539406	SWAGTAM	04-Aug-17
500125	EIDPARRY	04-Aug-17	501242	TCIFINANCE	04-Aug-17
523127	EIHAHOTELS	04-Aug-17	517562	TRIGYN	04-Aug-17
532843	FORTIS	04-Aug-17	507747	TTKHEALTH	04-Aug-17
538568	FRUTION	04-Aug-17	538565	VISTARAMAR	04-Aug-17
534063	FUTSOL	04-Aug-17	501391	WHBRADY	04-Aug-17
512443	GANONTR	04-Aug-17	512367	ZSHERAPR	04-Aug-17
500670	GNFC	04-Aug-17	512291	ZSPEEDCO	04-Aug-17
509488	GRAPHITE	04-Aug-17	532774	AFL	05-Aug-17
500690	GSFC	04-Aug-17	532327	ALLSOFT	05-Aug-17
532467	HAZOR	04-Aug-17	532141	ANDHRACEMT	05-Aug-17
500104	HINDPETRO	04-Aug-17	500012	ANDHRAPET	05-Aug-17
500850	INDHOTEL	04-Aug-17	531179	ARMANFIN	05-Aug-17
517423	INTEGSW	04-Aug-17	505681	BIMETAL	05-Aug-17
511618	JKIND	04-Aug-17	523019	BNRSEC	05-Aug-17
533293	KIRLOSENG	04-Aug-17	530809	BNRUDY	05-Aug-17
540192	LKPSEC	04-Aug-17	502216	BOMBOT	05-Aug-17
500520	M&M	04-Aug-17	538786	CIL	05-Aug-17
532637	MANGALAM	04-Aug-17	533309	DALMIABHA	05-Aug-17
500206	MARGOFIN	04-Aug-17	531599	FDC	05-Aug-17
524084	MONSANTO	04-Aug-17	530519	INTERFAC	05-Aug-17
500290	MRF	04-Aug-17	538964	MERCURYLAB	05-Aug-17
524808	PHYTO	04-Aug-17	526642	MIRZAIN	05-Aug-17
531172	PRANAVSP	04-Aug-17	524709	NAGAAGRI	05-Aug-17
532441	RAINBOWDQ	04-Aug-17	530119	NATRAJPR	05-Aug-17
500358	RAMAPETRO	04-Aug-17	532698	NITINSPIN	05-Aug-17
531033	REGAL	04-Aug-17	502165	OCL	05-Aug-17
535322	REPCOHOM	04-Aug-17	519439	PIONAGR	05-Aug-17
520008	RICOAUTO	04-Aug-17	513613	PRESHAMET	05-Aug-17
531539	RISHDIGA	04-Aug-17	531688	PRITHVIEXCH	05-Aug-17
533168	ROSSELLIND	04-Aug-17	532891	PURVA	05-Aug-17
532983	RPGLIFE	04-Aug-17	530517	RELAXO	05-Aug-17
503691	SAHARA	04-Aug-17	513295	RUCHISTR	05-Aug-17
538992	SAPL	04-Aug-17	519031	SHAHFOOD	05-Aug-17
532163	SAREGAMA	04-Aug-17	504382	SMPLXTR	05-Aug-17
512393	SHARDUL	04-Aug-17	532872	SPARC	05-Aug-17
517411	SHYAMTEL	04-Aug-17	532276	SYNDIBANK	05-Aug-17
532784	SOBHA	04-Aug-17	531115	SYNERGY	05-Aug-17
539026	SSPNFIN	04-Aug-17	513540	TNSTLTU	05-Aug-17
513151	STINDIA	04-Aug-17	530459	VALSONQ	05-Aug-17
590072	SUNDRMBRAK	04-Aug-17	532116	XOINFO	05-Aug-17

### Earning Estimate Q1FY18

DATE	NSE code	Sales	sales Growth	PAT	PAT Growth
28-Jul-17	COROMANDEL	2227.20	8.10	36.40	386.00
28-Jul-17	EQUITAS	223.60	9.50	18.20	(70.20)
28-Jul-17	ESCORT	1125.00	7.00	56.50	9.80
28-Jul-17	INDIACEM	1298.50	8.00	42.70	(2.80)
28-Jul-17	LICHSGFIN	1047.00	27.00	586.30	43.80
28-Jul-17	LT	23700.00	8.30	985.00	61.60
29-Jul-17	NTPC	19678.50	4.30	2505.80	4.20
31-Jul-17	BEL	1171.50	34.40	38.60	6.90
31-Jul-17	SIEMENS	2630.00	0.40	161.80	24.40
31-Jul-17	SHREECEM	2453.40	11.60	363.70	(28.40)
31-Jul-17	GODREJCP	2311.00	9.00	257.00	1.30
31-Jul-17	TORNTPHARM	1570.50	4.20	211.40	(27.60)
31-Jul-17	CONCOR	1379.50	3.00	169.60	(5.00)
31-Jul-17	HEXAWARE	984.30	13.20	121.80	21.90
31-Jul-17	INDIGO	5721.60	25.00	614.90	3.90
31-Jul-17	SRTRANSFIN	1454.60	8.00	438.10	17.10
1-Aug-17	JSWSTEEL	13727.10	17.20	452.80	(59.20)
1-Aug-17	TECHM	7197.90	4.00	648.10	(1.20)
1-Aug-17	POWERGRID	7255.80	19.60	2182.20	21.20
1-Aug-17	SHRIRAMCIT	792.10	15.40	212.50	16.90
2-Aug-17	VOLTAS	1956.80	5.80	167.90	7.10
2-Aug-17	EMAMILTD	612.20	(5.00)	90.40	(23.10)
2-Aug-17	LUPIN	4403.60	(1.40)	597.10	(32.30)
2-Aug-17	BATA	728.50	8.00	57.70	14.50
2-Aug-17	PNB	3933.50	6.30	446.40	45.70
3-Aug-17	CEAT	1547.40	(6.00)	67.90	(35.20)
3-Aug-17	CUMMINSIND	1315.00	4.40	168.00	(7.30)
3-Aug-17	RAMCOCEM	1012.10	4.70	149.80	(3.90)
3-Aug-17	COLPAL	1076.00	7.00	145.60	15.80
3-Aug-17	IOC	89981.00	5.10	3248.30	(60.70)
3-Aug-17	TITAN	3478.10	25.00	225.20	0.70
4-Aug-17	M&M	10910.30	3.70	979.50	9.40
4-Aug-17	DABUR	1808.50	(6.00)	256.90	(12.30)
4-Aug-17	FORTIS	1222.10	9.00	(7.90)	PL
4-Aug-17	HINDPETRO	45243.90	1.00	869.00	(58.60)
4-Aug-17	ARVIND	2304.30	9.50	63.90	(13.00)
4-Aug-17	REPCOHOME	104.30	24.20	47.90	21.20
5-Aug-17	DALMIABHA	2033.30	15.20	227.60	142.20
7-Aug-17	AMARAJABAT	1479.30	12.00	128.80	(1.40)

### Result Q1FY18

Bse Code	NSE code	Sales	sales Growth	PAT	PAT Growth
531638	SURAJLTD	40.66	(3.17)	0.13	(183.69)
533023	WABCOINDIA	566.11	0.13	53.32	(27.85)
500312	ONGC	19927.33	12.77	3565.61	(15.76)
500790	NESTLEIND	2475.68	8.73	306.76	6.77



500214	IONEXCHANG	208.05	2.87	7.29	(10.22)
505283	KGKHOSLA	86.36	(26.02)	(2.45)	(125.93)
503811	SIYSIL	320.63	13.44	10.35	26.07
507438	IFBAGRO	336.34	23.01	7.27	(28.52)
500179	HCL-INSYS	406.68	(46.55)	(38.71)	235.15
500243	KIRLOSIND	0.47	(67.36)	5.47	(7.91)
500215	ATFL	187.16	(2.92)	6.50	11.49
523638	IPRINGLTD	48.46	27.36	0.82	(17.17)
513517	STEELCAS	46.75	66.55	3.33	(436.36)
500405	SUPPETRO	694.77	(4.49)	10.31	(77.40)
524663	BIBCL	3.35	(87.95)	(1.98)	421.05
511736	USHDEVINT	93.62	(92.85)	(28.72)	(454.13)
533167	COROENGG	6.17	(31.44)	(3.35)	75.39
532848	DELTACORP	128.62	18.37	22.30	11.06
535754	ORIENTCEM	568.23	29.99	38.92	(614.81)
532960	IBSEC	165.88	65.75	50.28	146.23
532944	ONMOBILE	163.66	(13.23)	2.54	(72.78)
530999	BALAMINES	177.09	6.39	17.87	(23.44)
532523	BIOCON	987.70	5.77	101.20	(69.37)
526612	BLUEDART	676.28	7.40	24.52	(36.85)
511243	CHOLAFIN	1224.00	7.55	221.17	14.11
532296	GLENMARK	2065.30	(5.00)	359.40	141.52
532822	IDEA	8109.10	(14.26)	(327.70)	(172.55)
532659	IDFC	2576.90	23.54	134.80	3.33
505726	IFBIND	429.17	16.46	2.68	(46.61)
590065	IMPAL	129.36	2.53	8.06	(17.84)
532892	MOTILALOFS	516.93	70.11	90.15	91.12
500111	RELCAPITAL	5033.00	79.30	417.00	0.48
532301	TATACOFFEE	394.85	0.13	59.80	114.72
532944	ONMOBILE	187.11	(9.60)	4.10	(33.66)
532805	REDINGTON	9725.42	16.05	100.21	3.13
500304	NIITLTD	209.90	(0.05)	10.40	1200.00
506395	COROMANDEL	2289.00	14.37	76.89	926.57
532150	INDRAMEDCO	184.32	(1.27)	4.80	(42.72)
500292	HEIDELBERG	513.70	11.24	16.20	(38.31)
500367	RUBFILINTL	59.18	29.67	8.12	351.11
532638	SHOPERSTOP	941.00	24.49	(3.45)	(74.56)
500253	LICHSGFIN	3654.58	9.87	470.06	15.26
523754	EPCIN	59.84	20.69	2.90	15.08
500280	CENTENKA	375.65	43.20	5.70	(74.67)
500472	SKFINDIA	738.00	14.67	64.20	6.29
534742	ZUARI	706.00	(27.66)	(10.46)	(73.88)
520119	ASAL	59.32	5.76	(11.38)	280.60
500510	LT	24374.64	12.23	1184.43	94.30
531431	SHAKTIPUMP	88.76	16.74	4.82	139.80
513456	KANSHST	64.11	31.72	(0.26)	(228.20)
532790	TANLA	172.30	75.83	9.19	126.91
530005	INDIACEM	1461.00	21.50	26.44	(39.88)

500495	ESCORTS	1163.15	9.16	62.25	32.56
532493	ASTRAMICRO	54.18	(4.31)	4.17	(271.60)
506235	ALEMBICLTD	32.92	18.80	2.82	(293.15)
500059	BINANIIND	9.78	(87.81)	8.96	(56.69)
522074	ELGIEQUIP	372.49	(7.64)	20.84	(0.19)
523754	EPCIN	55.38	(2.48)	3.29	(17.34)
524669	HESTERBIO	34.93	27.81	7.08	28.49
532150	INDRAMEDCO	171.78	(4.55)	4.68	20.31
532732	KKCL	129.55	3.32	33.91	55.62
532529	NDTV	154.35	(9.07)	5.28	(785.71)
500304	NIITLTD	361.56	51.38	30.14	69.90
533273	OBEROIRLTY	289.53	25.84	101.82	50.29
531431	SHAKTIPUMP	163.64	124.04	10.94	4872.73
502355	BALKRISIND	1002.94	15.23	137.47	1.79
521248	KITEX	156.50	(9.14)	27.00	(39.87)

### Economic Calendar

Country	Monday 31th July 17	Tuesday 1st Aug 17	Wednesday 2nd Aug 17	Thursday 3rd Aug 17	Friday 4th Aug 17
US	Chicago PMI, Pending Home Sales m/m, Loan Officer Survey.	Core PCE Price Index m/m, Personal Spending m/m, Personal Income m/m, Final Manufacturing PMI, ISM Manufacturing PMI, Construction Spending m/m, ISM Manufacturing Prices, Total Vehicle Sales.	ADP Non-Farm Employment Change, Crude Oil Inventories.	Challenger Job Cuts y/y, Unemployment Claims, Final Services PMI, ISM Non-Manufacturing PMI, Factory Orders m/m, Natural Gas Storage.	Average Hourly Earnings m/m, Non-Farm Employment Change, Unemployment Rate, Trade Balance.
UK/EURO ZONE	German Retail Sales m/m, German Unemployment Change, Italian Monthly Unemployment Rate, Net Lending to Individuals m/m, M4 Money Supply m/m, Mortgage Approvals, CPI Flash Estimate y/y, Core CPI Flash Estimate y/y, Unemployment Rate	Italian Manufacturing PMI, French Final Manufacturing PMI, German Final Manufacturing PMI, Final Manufacturing PMI, Manufacturing PMI, Prelim Flash GDP q/q.	Spanish Unemployment Change, Construction PMI, PPI m/m.	Spanish Services PMI, Italian Services PMI, French Final Services PMI, German Final Services PMI, ECB Economic Bulletin, Final Services PMI, Retail PMI, Services PMI, BOE Inflation Report, MPC Official Bank Rate Votes, Monetary Policy Summary, Official Bank Rate, Asset Purchase Facility, MPC Asset Purchase Facility Votes, BOE Gov Carney Speaks.	German Factory Orders m/m, French 10-y Bond Auction
INDIA		Auto no, Nikkei Manufacturing PMI.			Nikkei Services PMI



## Narnolia Securities Ltd

201 | 2nd Floor | Marble Arch Building | 236B-AJC Bose  
Road | Kolkata-700 020 , Ph : 033-40501500

email: [narnolia@narnolia.com](mailto:narnolia@narnolia.com),  
website : [www.narnolia.com](http://www.narnolia.com)

**Risk Disclosure & Disclaimer:** This report/message is for the personal information of the authorized recipient and does not constitute to be any investment, legal or taxation advice to you. Narnolia Securities Ltd. (Hereinafter referred as NSL) is not soliciting any action based upon it. This report/message is not for public distribution and has been furnished to you solely for your information and should not be reproduced or redistributed to any other person in any form. The report/message is based upon publicly available information, findings of our research wing "East wind" & information that we consider reliable, but we do not represent that it is accurate or complete and we do not provide any express or implied warranty of any kind, and also these are subject to change without notice. The recipients of this report should rely on their own investigations, should use their own judgment for taking any investment decisions keeping in mind that past performance is not necessarily a guide to future performance & that the value of any investment or income are subject to market and other risks. Further it will be safe to assume that NSL and /or its Group or associate Companies, their Directors, affiliates and/or employees may have interests/ positions, financial or otherwise, individually or otherwise in the recommended/mentioned securities/mutual funds/ model funds and other investment products which may be added or disposed including & other mentioned in this report/message.