

SGX NIFTY : 7988.50 (31 Pt Down)

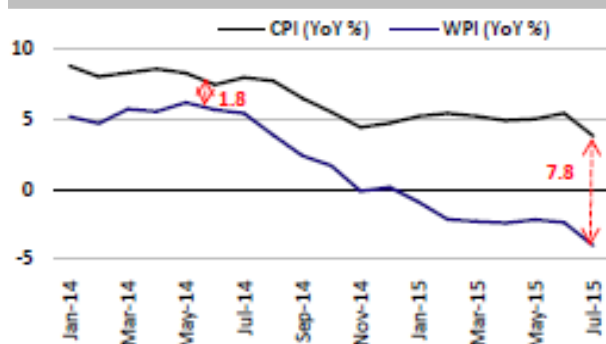
Quote of the Day

"Growth benefits investors only when the business in point can invest at incremental returns that are enticing - in other words, only when each dollar used to finance the growth creates over a dollar of long-term market value. In the case of a low-return business requiring incremental funds, growth hurts the investor."

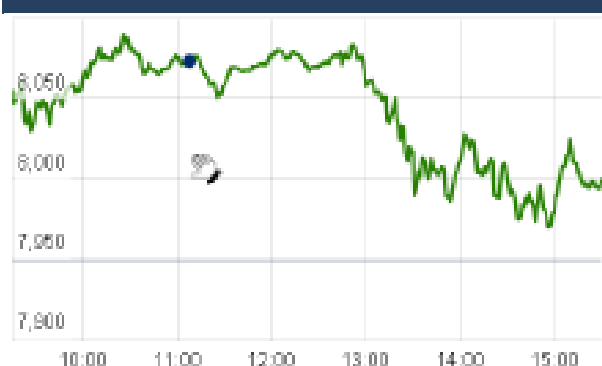
Warren Buffett

Chart of the Day

CPI & WPI Trend



Index Action Nifty (28th Aug 15)



Index

Contents	Page	Coverage
News	2	Update
Economic Calendar	3	Update

Market

Name	Value	Change
Sensex	26,392.38	161.92
Nifty	8001.95	53.00
DOW	16,643.01	(11.76)
NASDAQ	4,828.21	15.62
CAC	4,675.13	16.95
DAX	10,298.53	(17.09)
FTSE	6,247.94	55.97
NIKKEI	18,947.76	(188.86)
HANG SENG	21,550.74	(61.65)
EW ALL SHARE	13857.65	69.28

Instituional Turnover

FII

Investor	Buy(Cr.)	Sale(Cr.)	Net(Cr.)
28th Aug,15	5682.45	5626.04	56.41
Aug,15	56534.73	59974.99	(3440.26)
2015	778026.28	759315.33	18710.95

DII

Investor	Buy(Cr.)	Sale(Cr.)	Net(Cr.)
28th Aug,15	1832.89	985.46	847.43
Aug,15	23811.41	20932.17	2879.24
2015	300599.65	272017.87	28581.78

Commodity Price

Commodity/Currencies	Value	
GOLD	26623.00	↑
SILVER	34378.00	↑
CRUDEOIL	44.51	↓
COPPER	348.60	↑
NATURALGAS	181.50	↑
DOLLAR/RS.	66.14	↑
EURO/RS.	74.27	↑
POUND/RS.	102.10	↑

Market Snapshot

Top Price Performers

Top Performers 1D	% Change	Top Performers 1W	% Change	Top Performers 1M	% Change
PGEL	19.98	ORISSASP	98.00	SHRENUJ	66.36
SYMPHONY	18.94	IBREALEST	18.33	JUBLINDS	62.05
GOLDIAM	18.42	INDOSOLAR	18.27	ORISSASP	60.16
ESCORTS	18.32	VIDEOIND	18.17	ENERGYDEV	49.09
BHAGWATIHO	17.60	ESTER	17.41	NITINFIRE	38.16

Worst Price Performers

Worst Performers 1D	% Change	Worst Performers 1W	% Change	Worst Performers 1M	% Change
STEERINTER	(19.68)	IMPEXFERRO	(28.86)	AMTEKAUTO	(68.44)
SOUISPAT	(16.67)	SOUISPAT	(28.57)	AMTEKINDIA	(62.11)
UTTAMSUGAR	(11.03)	TRF	(27.12)	AHMEDFORGE	(54.28)
DHARSUGAR	(10.73)	TUNITEX	(25.00)	JYOTISTRUC	(53.93)
IMPEXFERRO	(9.79)	GOLDTECH	(24.17)	TRF	(49.62)

Top News

- ILandFS Transportation Mgt Guideline** : Company will raise Rs 750 crore via rights issue. The company finds rights issue to be a better option to mobilize equity because of the stock prices. With Rs 37,000 crore of assets on the ground, the company is looking for one or two annuity asset selling to address the debt issue . The company will have around 19 projects, which will be operational by FY16-17.
- United Bank of India Mgt Guideline** : Bank would make efforts to bring the absolute gross NPA figures below Rs 6,000 crore by the end of the fiscal . The main aim will be to lower the absolute gross NPA level below Rs 6,000 crore by the end of the financial year . Company will have to bring it between 7.5-8 percent . There would be some addition to NPAs, he said. When asked if the bank would sell bad assets to asset reconstruction companies (ARCs) . The bank is hopeful of getting capital from the government . It had sought Rs 500 crore.
- Gammon Infrastructure** said it will divest nine of its project companies to BIF India Holdings. "The company's step down subsidiary Gammon Infrastructure Projects Ltd (GIPL) has on Friday signed a share purchase agreement divesting nine of its project companies (six road and 3 power) to BIF India Holding Pte jointly held by Brookfield Asset Management and its affiliates and Core Infrastructure India Fund Pte Ltd
- Sun Pharma** is facing a class action suit in the United States over plant closures that took place in 2009. The case pertains to Sun Pharma's US subsidiary Caraco. The US Circuit Court of Appeals ruled that Caraco did not comply with norms while closing two of its units in Detroit and Farmington Hills
- The Maharashtra government** has shown keen interest in buying back its Kolhapur road project and the process is likely to be completed within 90 days, highways developer IRB Infrastructure
The government earlier in the week allowed developers to divest 100 percent equity in projects two years after completion to fast-track award and implementation of highway projects in the country by making additional funds available for investment in projects.
- Kalpataru Power Transmission (KPTL)** has bagged contracts worth Rs 880 crore in both domestic and international markets. The company secured five transmission line projects together valued at Rs 465 crore in Tanzania, Ukraine, Thailand, Tajikistan and Ethiopia. It also won a turnkey contract for 400-kv transmission line of approximately Rs 342 crore from Karnataka Power Transmission Corporation.
- MMTC** has approved bids for import of 1,000 tonnes of onion. MMTC which had floated a tender for 10,000 tonnes of onion import, received only one bid from Singapore-based Cross Trade Line for 1,000 tonnes.
- Bosch** inaugurated its new manufacturing plant at Bidadi, near here, which has come up at an investment of Rs 340 crore. The plant, which has come up on an area of 38,000 sqm, would manufacture products for the diesel systems division.
- U.S. personal spending** rose to a seasonally adjusted 0.3%, from 0.3% in the preceding month whose figure was revised up from 0.2%.
- Statistics Canada said that Canada's Industrial Product Price Index** rose to 0.7%, from 0.5% in the preceding month. Analysts had expected Canada's Industrial Product Price Index to fall to 0.1% last month.
- Brazilian GDP** fell to a seasonally adjusted -2.6%, from -1.6% in the preceding month. Analysts had expected Brazilian GDP to fall to -2.0% last month.
- National Statistics said that U.K. Index of Services** rose to 0.7%, from 0.4% in the preceding month. Analysts had expected U.K. Index of Services to rise 0.7% last month.
- U.K. Office for National Statistics** said that GDP rose to 0.7%, from 0.7% in the preceding quarter. Analysts had expected U.K.'s gross domestic product to rise 0.7% in the last quarter.

Economic Calendar

Country	Monday 31th Aug 15	Tuesday 1th Sept 15	Wednesday 2th Sept 15	Thursday 3th Sept 15	Friday 4th Sept 15
US	Chicago PMI .	Final Manufacturing PMI , ISM Manufacturing PMI , Construction Spending m/m , IBD/TIPP Economic Optimism , ISM Manufacturing Prices , Total Vehicle Sales .	Revised Nonfarm Productivity q/q , ADP Non-Farm Employment Change , Revised Unit Labor Costs q/q , Factory Orders m/m , Crude Oil Inventories .	Challenger Job Cuts y/y , Trade Balance , Unemployment Claims , Final Services PMI , ISM Non-Manufacturing PMI , Natural Gas Storage , Beige Book .	Non-Farm Employment Change , Unemployment Rate , Average Hourly Earnings m/m.
UK/EURO ZONE	CPI Flash Estimate y/y , Core CPI Flash Estimate y/y , Italian Retail Sales m/m .	Spanish Manufacturing PMI , Italian Manufacturing PMI , French Final Manufacturing PMI , German Unemployment Change , German Final Manufacturing PMI , Final Manufacturing PMI , Manufacturing PMI , Net Lending to Individuals m/m , M4 Money Supply m/m , Mortgage Approvals , Unemployment Rate .	German Retail Sales m/m , Spanish Unemployment Change , Halifax HPI m/m , PPI m/m , BRC Shop Price Index y/y .	Spanish Services PMI , Italian Services PMI , French Final Services PMI , German Final Services PMI , Final Services PMI , Services PMI , Retail Sales m/m , Spanish 10-y Bond Auction , Minimum Bid Rate , ECB Press Conference .	German Factory Orders m/m , Retail PMI , Trade Balance , Consumer Inflation Expectations , Revised GDP q/q , French 10-y Bond Auction .
INDIA	GDP Data	Auto sales No, HSBC Manufacturing PMI no , CAD Data.	Auto sales No .		

Narnolia Securities Ltd.

Narnolia Research Lab

Stellar IT Park | 5th Floor | Office Space No. 6 | Tower-I/Ind Plot No. C-25 | Sector-62 | Noida
| Ph : 0120-4215110

Central Strategy Desk - Kolkata

124 | 1st Floor | 7/1 Lords Sinha Road | Kolkata - 71
Ph : 033-22821500 | M : 93347 14418, 98302 69810