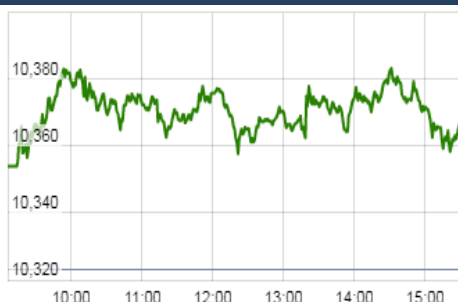


KEY LEVELS

Support 1 : 10272

Resistance 1 : 10400

Nifty Intraday Chart



Market Outlook

After opening on a subdued note, Nifty traded in the positive territory throughout the day on Monday and closed the day after gaining 0.39% over the previous trading day's close. The broader market was in favor of bulls as the midcap and small cap indices outshined the benchmark index and closed the day after gaining 1.1%-1.6%.

On the sectoral front, some buying interest was witnessed in Auto, Realty and Pharmaceutical stocks while the FMCG index has shown some weakness. The breadth of the market was positive and about two shares advanced for every share declined at NSE.

After making a low of 9687.55 on 28th September, Nifty has given a sharp bullish rally over 7% in a time span of just one month. It has also given a bullish breakout (U-pattern) above 10180 on 16th October. The pattern target of the index is 10675. Currently, the market breadth is stable and midcap and small-cap indices also responding in the same direction with the benchmark index.

On downside in near term 10,200 should act as strong support for Nifty

Market

Market	Value	% Change
Morning Traded Market		
SGX NIFTY	10,374.50	-0.25%
NIKKIE	21,924.48	-0.40%
HANG SENG	28,224.38	-0.40%
Yesterday Closing Market		
Sensex	33,266.16	0.33%
Nifty	10,363.65	0.39%
DOW	23,348.74	-0.36%
NASDAQ	6,698.96	-0.03%
CAC	5,493.63	-0.01%
DAX	13,229.57	0.09%
FTSE	7,487.81	-0.23%
EW ALL SHARE	19,227.72	0.72%

% Change in 1 day

Commodity Price (Yesterday Closing)

Commodity/Currencies	Value	% Change
GOLD	29384.00	0.23%
SILVER	39265.00	0.30%
CRUDEOIL	60.52	0.02%
NATURALGAS	193.70	-0.26%
DOLLAR/RS.	64.85	-0.30%
EURO/RS.	75.46	-0.10%
POUND/RS.	85.47	0.32%

% Change in 1 day

Institutional Turnover

FII			
Investor	Buy(Cr.)	Sale(Cr.)	Net(Cr.)
27-Oct-17	4946	5132	(186)
Oct-17	86783	93251	(6468)
2017	1026173	1047930	(21757)
DII			
Investor	Buy(Cr.)	Sale(Cr.)	Net(Cr.)
27-Oct-17	3774	3634	140
Oct-17	62881	53582	9298
2017	649701	578461	71240

Event Today

Right Issue of Equity Share

HCL-INSYS

(Exdate : 31.10.2017)

Buy Back of Shares

INFY

(Exdate : 31.10.2017)

Interim Dividend

INFY : Rs 13:00/-

CRISIL : Rs 6/-

ASIANPAINT : Rs 2.6/-

(Exdate : 31.10.2017)

Result

AJANTPHARM , BHARTIARTL

BLUESTARCO , CHOLAFIN , CONCOR

DABUR , DBCORP , DIVISLAB

DRREDDY , ESCORTS , INDIGO

INOXLEISUR , JSWSTEEL , KPIT

LGBBROSLTD , NAUKRI , SANOFI

STAR , SWARAJENG , SYMPHONY

SYNDIBANK , VSTIND , ZEEMEDIA

Concall

IDFC : 10:00 AM , Mahindra life :11 AM

Astra Micro : 11 AM , RKFORGE : 11:30 AM

KSCL: 2:00PM , INOXLEISUR : 3:30 PM

Symphony, Redington : 4:00 PM

Dabur , Vaibhav Global : 4:30 PM

Escorts, INDIGO : 5:00 PM

Marico , Kaya Limited : 6:00 PM

JSW Stee : 6:00 PM , Dr Reddy's : 6:30

Quote of the Day : "While enthusiasm may be necessary for great accomplishments elsewhere, on Wall Street it almost invariably leads to disaster." **Benjamin Graham**

Mahindra Logistics**"SUBSCRIBE for
LONG TERM"****31th Oct 2017**

Mahindra Logistics is into Supply chain Management which accounts for 88% of the total revenue and into corporate people transport solutions which accounts for another 12% of the total revenue of the company. In the PTS service the main client is Tech Mahindra but in SCM business the company serves over 200 domestic and multinational companies operating in several verticals, including automotive, engineering, consumer goods, pharmaceuticals, e-commerce and bulk. The group company contribution to total sales has reduced from 70% in FY15 to 54% in FY17 which is also the key focus of the company to grow business from non Mahindra group clients. The company's NPM is low at 1.73% but we feel that though the business is running on thin margin, the margins are protected as the company has asset light model and hence the interest and depreciation cost are controlled which leads to safety of Margins. We are overall bullish on the professional services providers' business as we feel that in India it is only in a nascent stage and in future course of time, businesses in India will hibe off the non core business to such companies more to focus on their business. The company is being offered at 7.3 times FY18E P/B with RoE of 14.5%E, however considering huge growth potential, We recommend SUBSCRIBE for LONG TERM

TATAELXSI**"ACCUMULATE"****30th Oct 2017**

Management has highlighted that with the use of electronics in cars on the rise, Tataelxsi will continue identifying technologies that can be molded and implemented in the automotive segment, providing the company with enough opportunities to grow. Management remains confident of exploring opportunities that lie ahead in its specialized verticals of automotive, video broadcasting, healthcare and industrial design. Additionally, the company believes that automotive in cars is on the rise and is working on drive less car by 2025. Moreover we are positive with the recent development related to company's Autonomai Platform for Autonomous Vehicles license to a Top Global OEM and company's association with Panasonic for Specialist Design Services in Consumer Products/ Electronics. We expect 11% revenue CAGR and 21% earnings CAGR over FY17E/19E. We value the stock at Rs 925 (23x FY19E EPS) and recommend Accumulate at current prices .

For details, refer to our daily report- India Equity Analytics*Top News****>> IOC Concall update:**

- Capacity utilization at Paradip refinery has reached at 97% in Q2FY18. Profitability is likely to increase once refinery started processing heavy crude. Refinery can process 40% heavy crude.
- Pipeline volume has declined due to the planned shutdown of Mathura, Panipat, Barauni refinery. Shut down is done on account of lower sales in Q2.
- Distillate yield for the Q2 is 79.4% vs 71.6% in Q1.
- Fuel loss was 7.19% in Q2.
- GRM for the Q2 was USD 7.98/BBL. Normalized GRM for Q2 was USD 7.85/BBL.
- Ranchi-Jharsududa 1069 Km pipeline is fully commissioned in July 2017.
- GST impact of Rs.300 Cr in Q2, full year guidance ~ Rs.2000 Cr
- One time provision for Kandla port of Rs.300 Cr
- Construction of IOC Ennore terminal is around 80% complete and is expected to be commissioned in mid of FY19.

>> IDFC Bank and Shriram Capital was called off on Monday as both sides failed to arrive at an acceptable valuation after four months of negotiations. The confidentiality, exclusivity, and standstill (CEST) agreement entered into to evaluate a strategic combination of relevant financial services of the Shriram Group with the IDFC Group stands terminated with immediate effect

>> Lupin Concall Update

Management has guided for EBITDA margin in the range of 21%-23% in H2FY18 from 26% earlier for FY18. Company is on the track to file 30-35 ANDA's in FY18 and maintain same run rate for coming years. Management cuts the India business revenue growth guidance of 15% to 12%-15% in FY18 on YoY Basis. Tax rate guidance of 25%- 28% for FY18. The Management expects single digit in price erosion in the US base business to persist during FY18. Company is taking step to bring working capital down from 128 days as on 1HFY18. The Company has addressed the issues raised during Goa (three observations) and Indore (Pithampur) inspection by the USFDA and is currently awaiting clarity from the regulatory authority on the issue. The management expects to get clearance in next couple of months.

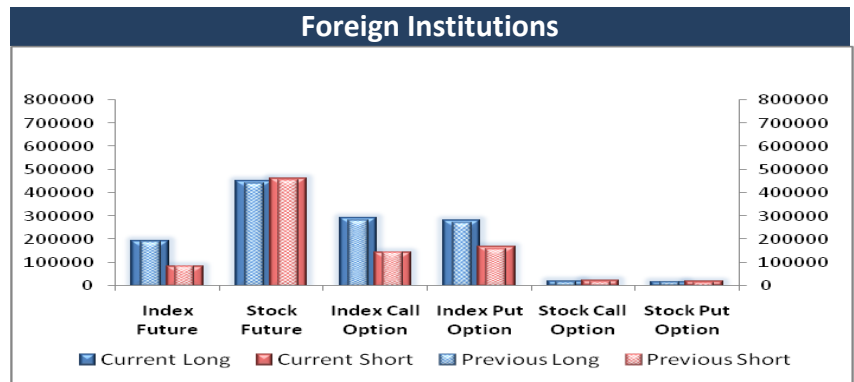
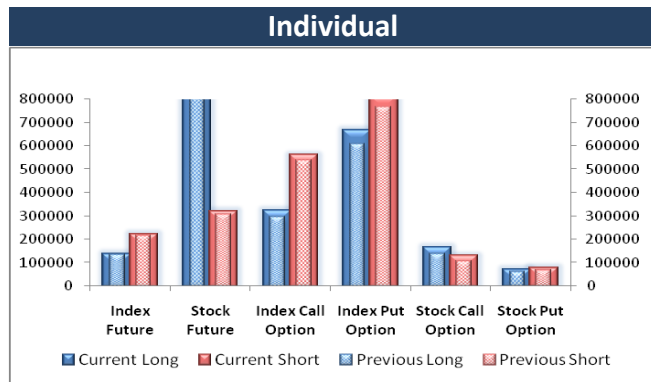
>> PI Industries Ltd Concall

The management has maintained revenue growth guidance at ~10% across both the business segment, along with the ramp-up of two recently launched rice fungicides (Header and Fender). Capex outlook of Rs150 Cr increase to Rs200 Cr in FY18 out of which company has already invested 60Crore. Expected Effective Tax Rate for FY18-20%-21 % (FY17-10%) as the Jambusar facility will be going under the 50% tax benefit from the 100% tax benefit earlier. The Company had launched Elite in partnership with BASF which is a 9(3) products and it intends to launch 2 more 9(3) products in FY18.

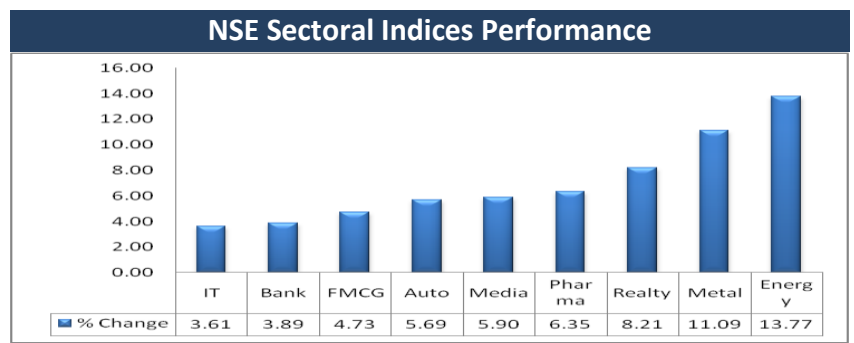
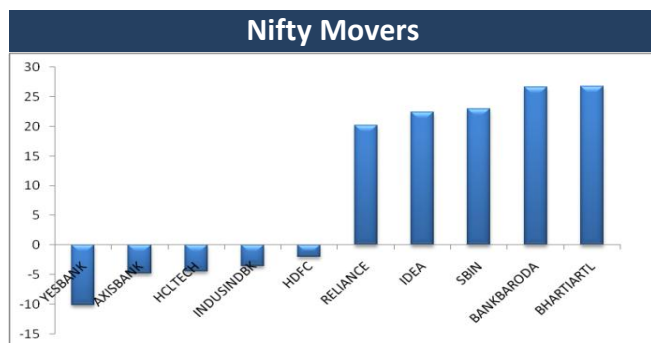
Block Deal

Exchange	Deal Date	Company	Client Name	Deal Type	Quantity	Price
NSE	30-Oct-17	BRNL	CORPORATION SAN FINANCE	BUY	800000	173
NSE	30-Oct-17	CEREBRAINT	POOJA ARVIND GOYAL	BUY	796711	43
NSE	30-Oct-17	DYNPRO	REMCOM SALES SERVICES PVT LTD	BUY	105542	159
NSE	30-Oct-17	LAKSHMIEFL	GULSHAN INVESTMENT COMPANY LIMITED	BUY	445355	34
NSE	30-Oct-17	LAKSHMIEFL	PATEL MANAV NARESHBHAI	BUY	363473	34
NSE	30-Oct-17	SAKUMA	BHAVNABEN VIRENDRAKUMAR PATEL	BUY	85000	209
NSE	30-Oct-17	SAKUMA	JHAVERI TRADING AND INVESTMENT PVT LTD	BUY	100000	209
NSE	30-Oct-17	SELAN	DILIPKUMAR BABUBHAI SOLANKI	BUY	138180	241
NSE	30-Oct-17	SELAN	EKTA MANAVADARIYA	BUY	87274	246
NSE	30-Oct-17	STAMPEDE	DHARA TECHNOSYSTEM LLP	BUY	1993391	7
NSE	30-Oct-17	VISHNU	ARKAYA INVESTMENTS	BUY	60904	369
NSE	30-Oct-17	CEREBRAINT	POOJA ARVIND GOYAL	SELL	796711	43
NSE	30-Oct-17	DYNPRO	REMCOM SALES SERVICES PVT LTD	SELL	380	156
NSE	30-Oct-17	HBSTOCK	DELHI IRON & STEEL CO.PVT LTD	SELL	130018	35
NSE	30-Oct-17	LAKSHMIEFL	AMAR MUKESHBHAI SHAH	SELL	365000	31
NSE	30-Oct-17	LAKSHMIEFL	GULSHAN INVESTMENT COMPANY LIMITED	SELL	445355	33
NSE	30-Oct-17	LAKSHMIEFL	PATEL MANAV NARESHBHAI	SELL	363473	34
NSE	30-Oct-17	PIIND	CARTICA CAPITAL LIMITED	SELL	3640862	775
NSE	30-Oct-17	PRAKASH	BNP PARIBAS ARBITRAGE	SELL	974126	141
NSE	30-Oct-17	SAKUMA	BHAVNABEN VIRENDRAKUMAR PATEL	SELL	85000	209
NSE	30-Oct-17	SAKUMA	JHAVERI TRADING AND INVESTMENT PVT LTD	SELL	100000	209
NSE	30-Oct-17	SELAN	DILIPKUMAR BABUBHAI SOLANKI	SELL	138180	242
NSE	30-Oct-17	SELAN	EKTA MANAVADARIYA	SELL	87274	243
NSE	30-Oct-17	STAMPEDE	SAMPAT PIYUSH CHANDRASINH	SELL	2210000	7
NSE	30-Oct-17	VETO	VETO ELECTROPOWERS INDIA PRIVATE LIMITED	SELL	100000	203
NSE	30-Oct-17	VISHNU	ARKAYA INVESTMENTS	SELL	54271	369

F&O OPEN INTEREST (Number of Contracts)



MARKET MOVERS (1 MONTH CHANGE)



Result Calendar Q2FY18

BSE Code	Company Name	Date	BSE Code	Company Name	Date
532331	AJANTPHARM	31-Oct-17	539354	POLYSPIN	31-Oct-17
540616	ARTEMIS	31-Oct-17	509220	PTL	31-Oct-17
522004	BATLIBOI	31-Oct-17	532805	REDINGTON	31-Oct-17
532454	BHARTIARTL	31-Oct-17	530807	REGALIAA	31-Oct-17
500067	BLUESTARCO	31-Oct-17	519230	RICHIRICH	31-Oct-17
532938	CAPF	31-Oct-17	511403	SAIJEEV	31-Oct-17
511243	CHOLAFIN	31-Oct-17	500674	SANOFI	31-Oct-17
531344	CONCOR	31-Oct-17	540719	SBILIFE	31-Oct-17
500096	DABUR	31-Oct-17	540653	SINTEXPLAST	31-Oct-17
532329	DANLAW	31-Oct-17	512014	SOBME	31-Oct-17
533151	DBCORP	31-Oct-17	513488	SSWRL	31-Oct-17
532488	DIVISLAB	31-Oct-17	532531	STAR	31-Oct-17
500124	DRREDDY	31-Oct-17	538876	STSERV	31-Oct-17
511634	DUGARHOU	31-Oct-17	500407	SWARAJENG	31-Oct-17
540063	ECS	31-Oct-17	517385	SYMPHONY	31-Oct-17
523127	EIHAHOTELS	31-Oct-17	532276	SYNDIBANK	31-Oct-17
509525	EMPIND	31-Oct-17	532790	TANLA	31-Oct-17
533477	ENKEIWHEL	31-Oct-17	524204	TEEAI	31-Oct-17
500495	ESCORTS	31-Oct-17	531762	UNJHAFOR	31-Oct-17
530705	FLORATX	31-Oct-17	532156	VAIBHAVGBL	31-Oct-17
532518	FLORENCE	31-Oct-17	509966	VSTIND	31-Oct-17
530389	GEEFC	31-Oct-17	517399	VXLINSTR	31-Oct-17
530469	GSLSEC	31-Oct-17	533452	WEIZFOREX	31-Oct-17
538838	ICL	31-Oct-17	532553	WELENT	31-Oct-17
500116	IDBI	31-Oct-17	532794	ZEEMEDIA	31-Oct-17
532636	IIFL	31-Oct-17	505665	ABCBEARS	01-Nov-17
531672	INANISEC	31-Oct-17	530431	ADORFO	01-Nov-17
517370	INCAP	31-Oct-17	532259	APARINDS	01-Nov-17
539448	INDIGO	31-Oct-17	500877	APOLLOTYRE	01-Nov-17
532706	INOXLEISUR	31-Oct-17	532834	CAMLINFIN	01-Nov-17
540526	IRBINVIT	31-Oct-17	513375	CARBORUNIV	01-Nov-17
530915	JRFOODS	31-Oct-17	517437	DUTRON	01-Nov-17
500228	JSWSTEEL	31-Oct-17	532927	ECLERX	01-Nov-17
539276	KAYA	31-Oct-17	531533	ECOM	01-Nov-17
507948	KEYCORP	31-Oct-17	513452	ELANGO	01-Nov-17
500458	KORE	31-Oct-17	524768	EMMESSA	01-Nov-17
532400	KPIT	31-Oct-17	532700	ENIL	01-Nov-17
500250	LGBBROSLTD	31-Oct-17	536507	FLFL	01-Nov-17
533007	LGBFORGE	31-Oct-17	532809	FSL	01-Nov-17
530441	MAHAN	31-Oct-17	532309	GEPIL	01-Nov-17
530243	MANGASOF	31-Oct-17	532424	GODREJCP	01-Nov-17
539940	MAXVIL	31-Oct-17	501455	GREAVESCOT	01-Nov-17
515037	MURUDCERA	31-Oct-17	506076	GRINDWELL	01-Nov-17
526831	NAINAMS	31-Oct-17	533525	HEALTHTECH	01-Nov-17
532777	NAUKRI	31-Oct-17	500182	HEROMOTOCO	01-Nov-17
519439	PIONAGR	31-Oct-17	532129	HEXAWARE	01-Nov-17

524735	HIKAL	01-Nov-17	503772	MODWOOL	02-Nov-17
532100	INDOCITY	01-Nov-17	524816	NATCOPHARM	02-Nov-17
533148	JSWENERGY	01-Nov-17	526721	NICCOPAR	02-Nov-17
500243	KIRLOSIND	01-Nov-17	535754	ORIENTCEM	02-Nov-17
521018	MARALOVER	01-Nov-17	503031	PENINLAND	02-Nov-17
539981	MAXINDIA	01-Nov-17	532898	POWERGRID	02-Nov-17
533088	MHRIL	01-Nov-17	507962	RAJATH	02-Nov-17
532742	PAUSHAKLTD	01-Nov-17	500260	RAMCOCEM	02-Nov-17
537839	PHOENIXTN	01-Nov-17	532369	RAMCOIND	02-Nov-17
538771	PINCON	01-Nov-17	532699	ROHLTD	02-Nov-17
539007	PINCONLIFE	01-Nov-17	532735	RSYSTEMINT	02-Nov-17
532934	PPAP	01-Nov-17	515043	SAINTGOBAIN	02-Nov-17
522205	PRAJIND	01-Nov-17	522034	SHANTIGEAR	02-Nov-17
514354	PREMIERPOL	01-Nov-17	532498	SHRIRAMCIT	02-Nov-17
540366	RADIOCITY	01-Nov-17	531219	SHYAMAINFO	02-Nov-17
532370	RAMCOSYS	01-Nov-17	503229	SIMPLXREA	02-Nov-17
532419	SMARTLINK	01-Nov-17	534680	SRGHFL	02-Nov-17
511218	SRTRANSFIN	01-Nov-17	536710	SRGSFL	02-Nov-17
517168	SUBROS	01-Nov-17	513517	STEELCAS	02-Nov-17
540212	TCIEXP	01-Nov-17	500403	SUNDRMFAST	02-Nov-17
532755	TECHM	01-Nov-17	532390	TAJGVK	02-Nov-17
526650	TFCILTD	01-Nov-17	532349	TCI	02-Nov-17
539488	TFLL	01-Nov-17	533393	TCIDEVELOP	02-Nov-17
538597	TTIENT	01-Nov-17	512117	TWIROST	02-Nov-17
532343	TVSMOTOR	01-Nov-17	539874	UJJIVAN	02-Nov-17
532268	ACCELYA	02-Nov-17	512511	VARUNME	02-Nov-17
500710	AKZOINDIA	02-Nov-17	500295	VEDL	02-Nov-17
532418	ANDHRABANK	02-Nov-17	538778	AKASHDEEP	03-Nov-17
502219	BOROSIL	02-Nov-17	538777	ASIACAP	03-Nov-17
540700	BRNL	02-Nov-17	505688	BHARATGEAR	03-Nov-17
519600	CCL	02-Nov-17	531556	CORALFINAC	03-Nov-17
532443	CERA	02-Nov-17	532922	EDELWEISS	03-Nov-17
500097	DALMIASUG	02-Nov-17	523754	EPCIN	03-Nov-17
500645	DEEPAKFERT	02-Nov-17	531953	GCCL	03-Nov-17
533146	DLINKINDIA	02-Nov-17	531375	GCCLINP	03-Nov-17
523736	DPL	02-Nov-17	500174	GLFL	03-Nov-17
503681	ELCIDIN	02-Nov-17	540743	GODREJAGRO	03-Nov-17
532511	EXCELCROP	02-Nov-17	533150	GODREJPROP	03-Nov-17
522275	GET&D	02-Nov-17	511441	GUJCRED	03-Nov-17
532296	GLENMARK	02-Nov-17	500440	HINDALCO	03-Nov-17
533248	GPPL	02-Nov-17	517526	INDITALIA	03-Nov-17
533162	HATHWAY	02-Nov-17	506528	KELENRG	03-Nov-17
500185	HCC	02-Nov-17	500245	KIRLFER	03-Nov-17
509631	HEG	02-Nov-17	504258	LAKSELEC	03-Nov-17
500184	HSCL	02-Nov-17	540648	PALASHSEC	03-Nov-17
532835	ICRA	02-Nov-17	532911	PARLESOFT	03-Nov-17
520066	JAYBARMARU	02-Nov-17	532810	PFC	03-Nov-17
532642	JSWHL	02-Nov-17	532461	PNB	03-Nov-17
500249	KSBPUMPS	02-Nov-17	531562	PUSHPIN	03-Nov-17

523598	SCI	03-Nov-17	526433	ASMTEC	04-Nov-17
540203	SFL	03-Nov-17	524606	BERLDRG	04-Nov-17
520086	SICAL	03-Nov-17	531582	BERYLSE	04-Nov-17
532795	SITINET	03-Nov-17	517236	CALCOM	04-Nov-17
514454	SOUTLAT	03-Nov-17	531067	CONTILI	04-Nov-17
517214	SPICEMOBI	03-Nov-17	532240	INDNIPPON	04-Nov-17
504959	STOVACQ	03-Nov-17	539083	INOXWIND	04-Nov-17
530883	SUCROSA	03-Nov-17	521248	KITEX	04-Nov-17
500400	TATAPOWER	03-Nov-17	517206	LUMAXIND	04-Nov-17
500114	TITAN	03-Nov-17	532892	MOTILALOFS	04-Nov-17
500420	TORNTPHARM	03-Nov-17	524709	NACLIND	04-Nov-17
521064	TRIDENT	03-Nov-17	524654	NATCAPSUQ	04-Nov-17
532505	UCOBANK	03-Nov-17	502420	ORIENTPPR	04-Nov-17
506690	UNICHEMLAB	03-Nov-17	539333	PENPEBS	04-Nov-17
532477	UNIONBANK	03-Nov-17	531768	POLYMED	04-Nov-17
539118	VRLLG	03-Nov-17	530517	RELAXO	04-Nov-17
511147	WSFIN	03-Nov-17	504614	SARDAEN	04-Nov-17
504067	ZENSARTECH	03-Nov-17	530075	SELAN	04-Nov-17
532774	AFL	04-Nov-17	513709	SHILGRAVQ	04-Nov-17
500012	ANDHRAPET	04-Nov-17	533389	SHILPI	04-Nov-17
500016	ARUNAHTEL	04-Nov-17	534392	VSSL	04-Nov-17

Earning Estimate Q2FY18

BSE Code	Company Name	Sale (Cr.)	Sales Growth (%)	PAT (Cr.)	PAT Growth (%)
30-Oct-17	BEL	1982.00	16.40	221.10	(35.50)
30-Oct-17	HDFC	2692.40	17.20	2166.10	18.60
30-Oct-17	INFRADEL	3620.10	10.00	815.40	5.40
30-Oct-17	LICHSGFIN	953.40	10.10	533.70	7.90
30-Oct-17	LUPIN	4104.10	(4.30)	454.00	(31.40)
30-Oct-17	MARICO	1582.90	10.00	195.40	8.20
30-Oct-17	TATASTEEL	32508.90	23.30	1733.30	LP
31-Oct-17	AJANTPHARM	499.90	(3.10)	104.80	(19.80)
31-Oct-17	BHARTIARTL	21695.20	(12.00)	208.60	(85.80)
31-Oct-17	BLUESTARCO	961.00	8.10	30.70	53.50
31-Oct-17	CAPF	455.20	44.50	74.90	30.10
31-Oct-17	CHOLAFIN	721.90	23.10	213.30	24.80
31-Oct-17	CONCOR	1548.20	12.30	262.20	66.10
31-Oct-17	DABUR	2025.10	2.50	381.00	6.70
31-Oct-17	DBCORP	551.20	2.30	89.30	0.90
31-Oct-17	DIVISLAB	922.40	(7.00)	216.10	(28.70)
31-Oct-17	DRREDDY	3737.40	4.20	346.90	6.90
31-Oct-17	ESCORT	1194.40	20.00	65.70	91.30
31-Oct-17	INDIGO	4965.90	19.20	219.80	57.20
31-Oct-17	JSWSTEEL	14909.40	12.70	1162.50	60.00
31-Oct-17	NAUKRI	231.30	10.20	66.70	(16.70)
31-Oct-17	SANOFI	691.10	10.70	88.90	10.30
31-Oct-17	STAR	895.20	(6.10)	43.90	(40.70)

01-Nov-17	RADIOCITY	87.20	7.70	12.10	(25.20)
01-Nov-17	ENIL	126.60	(2.30)	6.60	(17.00)
01-Nov-17	GODREJCP	2674.40	13.50	379.80	18.30
01-Nov-17	HEROMOTOCO	8614.60	10.50	1001.70	(0.30)
01-Nov-17	JSWENERGY	2067.10	1.00	204.30	(6.00)
01-Nov-17	SRTRANSFIN	1616.10	19.40	471.70	21.70
01-Nov-17	TVSMOTORS	4030.40	17.60	220.90	24.50
02-Nov-17	GET&D	930.00	11.50	37.00	79.80
02-Nov-17	GLENMARK	2316.00	6.60	186.30	(15.10)
02-Nov-17	POWERGRID	7254.20	16.40	2089.70	11.40
02-Nov-17	RAMCOCEM	993.10	(1.90)	141.40	(31.70)
02-Nov-17	SHRIRAMCIT	842.10	14.60	230.70	12.80
02-Nov-17	VEDL	21307.30	34.30	2208.50	76.40
03-Nov-17	TATAPOWER	7108.00	(1.40)	544.40	61.90
03-Nov-17	HINDALCO	26612.20	9.90	1107.30	126.20
03-Nov-17	PNB	3916.70	0.90	415.90	(24.30)
03-Nov-17	SITICABLE	351.60	21.70	(26.50)	Loss
03-Nov-17	TITAN	3031.90	15.00	189.20	3.00
03-Nov-17	TORNTPHARM	1646.10	17.10	240.80	16.30
03-Nov-17	UNIONBANK	2319.70	1.90	116.90	(33.90)

Result Q2FY18

BSE Code	Company Name	Sale (Cr.)	Sales Growth (%)	PAT (Cr.)	PAT Growth (%)
532432	MCDOWELL-N	1951.30	(4.24)	153.1	85.49
500405	SUPPETRO	707.50	13.30	36.6	27.84
538666	SHARDACROP	278.20	13.58	24.4	(26.46)
502090	SAGCEM	171.10	23.99	15.9	536.00
530965	IOC	110637.00	10.35	3696	18.39
532460	PONNIERODE	89.75	28.29	8.58	(11.18)
500292	HEIDELBERG	419.90	9.29	33.28	101.70
532500	MARUTI	21768.20	8.58	2484.3	3.60
523457	LINDEINDIA	506.90	9.01	10.233	(286.73)
520043	MUNJALSHOW	419.43	7.82	19.98	10.94
532504	NAVINFLUOR	218.10	19.62	42.87	12.25
513434	TATAMETALI	450.00	39.98	33.72	53.83
513729	AROGRANITE	50.50	(20.80)	0.37	(88.89)
524330	JAYAGROGN	609.00	60.42	14.9	5.90
532872	SPARC	15.30	(83.88)	-62.5	(524.02)
500089	DICIND	189.00	7.19	-2.8	(176.50)
507438	IFBAGRO	446.00	66.69	11	23.60
520043	MUNJALSHOW	415.00	6.68	19.9	10.49
500312	ONGC	18965.00	3.71	5130	3.12
530019	JUBILANT	1642.00	20.76	125.47	(13.33)
539254	ADANITRANS	752.00	10.15	66	(33.69)
532527	RKFORGE	333.00	118.88	23.5	(669.01)
506235	ALEMBICLTD	32.54	(25.38)	28.22	24.81
532493	ASTRAMICRO	54.55	(39.76)	10.31	(35.48)
532548	CENTURYPLY	474.55	3.33	40.13	(18.58)

500123	DRBECK	91.16	0.20	13.27	(13.15)
532630	GOKEX	260.69	52.54	-9.27	(66.62)
500010	HDFC	16583.00	21.89	2869	17.28
509675	HIL	256.46	20.50	9.43	2.84
505726	IFBIND	602.78	38.82	36.57	105.45
500199	IGPL	240.88	(5.07)	33.41	64.91
500233	KAJARIACER	671.30	6.79	56.95	(10.48)
532889	KPRMILL	742.63	1.22	73.5	(9.47)
500257	LUPIN	3874.40	(8.00)	458.8	(30.71)
532313	MAHLIFE	100.00	(20.31)	14	(56.48)
531642	MARICO	1536.00	6.74	185.04	2.48
513023	NBVENTURES	511.47	61.02	26.63	326.08
509930	SUPREMEIND	1055.06	20.14	59.81	(9.65)
512070	UPL	3770.00	8.40	238	43.24
532300	WOCKPHARMA	1022.88	(3.93)	-3.33	(119.57)

Economic Calendar					
Country	Monday 30th Oct 17	Tuesday 31th Oct 17	Wednesday 1th Nov 17	Thursday 2th Nov 17	Friday 3th Nov 17
US	Core PCE Price Index m/m , Personal Spending m/m , Personal Income m/m , Loan Officer Survey	Employment Cost Index q/q , S&P/CS Composite-20 HPI y/y, Chicago PMI , CB Consumer Confidence	ADP Non-Farm Employment Change , ISM Manufacturing PMI, Construction Spending m/m, Crude Oil Inventories , FOMC Statement, Federal Funds Rate	Prelim Nonfarm Productivity q/q , Prelim Unit Labor Costs q/q , Challenger Job Cuts y/y , Natural Gas Storage.	Average Hourly Earnings m/m , Non-Farm Employment Change , Unemployment Rate , Trade Balance , ISM Non- Manufacturing PMI , Factory Orders m/m.
UK/EURO ZONE	German Retail Sales m/m , German Import Prices m/m , French Prelim CPI m/m , Spanish Flash CPI y/y , German Unemployment Change, Net Lending to Individuals m/m , M4 Money Supply m/m	CPI Flash Estimate y/y , Core CPI Flash Estimate y/y , EU Economic Forecasts , Prelim Flash GDP q/q , Unemployment Rate	Italian Manufacturing PMI , French Final Manufacturing PMI, German Final Manufacturing PMI , Manufacturing PMI , Spanish Manufacturing PMI.	Construction PMI , BOE Inflation Report , MPC Official Bank Rate Votes , Monetary Policy Summary , Official Bank Rate , BOE Gov Carney Speaks.	Services PMI , Spanish Services PMI , Italian Services PMI , French Final Services PMI , German Final Services PMI.
INDIA			Auto no, Nikkei Manufacturing PMI.	Auto no,	



Narnolia Securities Ltd

201 | 2nd Floor | Marble Arch Building | 236B-AJC Bose
Road | Kolkata-700 020 , Ph : 033-40501500

email: narnolia@narnolia.com,
website : www.narnolia.com

Risk Disclosure & Disclaimer: This report/message is for the personal information of the authorized recipient and does not construe to be any investment, legal or taxation advice to you. Narnolia Securities Ltd. (Hereinafter referred as NSL) is not soliciting any action based upon it. This report/message is not for public distribution and has been furnished to you solely for your information and should not be reproduced or redistributed to any other person in any form. The report/message is based upon publicly available information, findings of our research wing "East wind" & information that we consider reliable, but we do not represent that it is accurate or complete and we do not provide any express or implied warranty of any kind, and also these are subject to change without notice. The recipients of this report should rely on their own investigations, should use their own judgment for taking any investment decisions keeping in mind that past performance is not necessarily a guide to future performance & that the the value of any investment or income are subject to market and other risks. Further it will be safe to assume that NSL and /or its Group or associate Companies, their Directors, affiliates and/or employees may have interests/ positions, financial or otherwise, individually or otherwise in the recommended/mentioned securities/mutual funds/ model funds and other investment products which may be added or disposed including & other mentioned in this report/message.