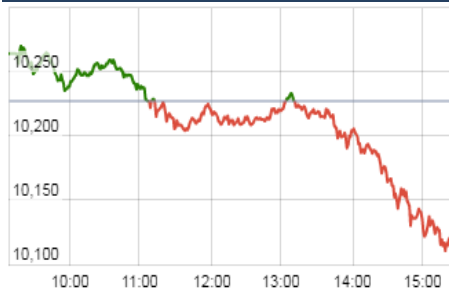


### KEY LEVELS

Support 1 : 10085  
Support 1 : 9955

Resistance 1 : 10234  
Resistance 1 : 10312

### Nifty Intraday Chart



### Market Outlook

After starting with a subdued session, Nifty rose to make a weekly high of 10407.15 on Tuesday and then it continuously fell to make a weekly low of 10109.55 on Friday. At the end of the week the index closed at 10121.80. It had a net loss of 2.58% over the previous week's close. The midcap and small cap indices out-performed the benchmark index and closed the week after losing near 0.5% each.

On the sectoral front, banking, metal and information technology indices were the main catalysts to close the market lower while some strength was witnessed in realty index and it ended the week after gaining over 2%.

Nifty trading above 23 times its trailing 12 months earning requires the market to go in for a price or time correction. Though on-going 2nd quarter FY18 earning season has gone well with a clearer sign of margin improvement. But at such elevated level of valuation, good earning is not enough. Rather it needs to be great to support price momentum from hereon.

Similar to the way the rally of the calendar year 2017 in India has been in sync with global markets, correction too is happening in sync with correction in global markets over last five trading session. Nifty has now come close to its support level of 10000-10100 but all short-term direction will be dependent more on how global markets move.

### Market

| Market                          | Value     | % Change |
|---------------------------------|-----------|----------|
| <b>Morning Traded Market</b>    |           |          |
| SGX NIFTY                       | 10,154.50 | 0.24%    |
| NIKKIE                          | 22,754.43 | -0.28%   |
| HANG SENG                       | 28,825.60 | -0.67%   |
| <b>Yesterday Closing Market</b> |           |          |
| Sensex                          | 32,832.94 | -0.95%   |
| Nifty                           | 10,121.80 | -1.02%   |
| DOW                             | 24,231.59 | -0.17%   |
| NASDAQ                          | 6,847.59  | -0.39%   |
| CAC                             | 5,316.89  | -1.05%   |
| DAX                             | 12,861.49 | -1.26%   |
| FTSE                            | 7,300.49  | -0.36%   |
| EW ALL SHARE                    | 19,072.74 | -1.03%   |

% Change in 1 day

### Commodity Price ( Yesterday Closing )

| Commodity/Currency | Value    | % Change |
|--------------------|----------|----------|
| GOLD               | 29209.00 | 0.68%    |
| SILVER             | 37582.00 | 0.13%    |
| CRUDEOIL           | 63.48    | -0.22%   |
| NATURALGAS         | 198.80   | 0.86%    |
| DOLLAR/RS.         | 64.46    | 0.22%    |
| EURO/RS.           | 76.32    | 0.24%    |
| POUND/RS.          | 87.03    | 0.47%    |

% Change in 1 day

### Institutional Turnover

| FII      |          |           |          |
|----------|----------|-----------|----------|
| Investor | Buy(Cr.) | Sale(Cr.) | Net(Cr.) |
| 1-Dec-17 | 4565     | 4259      | 306      |
| Dec-17   | 4565     | 4259      | 306      |
| 2017     | 1180427  | 1216867   | (36440)  |
| DII      |          |           |          |
| Investor | Buy(Cr.) | Sale(Cr.) | Net(Cr.) |
| 1-Dec-17 | 2335     | 2159      | 176      |
| Dec-17   | 2335     | 2159      | 176      |
| 2017     | 753657   | 673986    | 79670    |

### Event Today

#### Interim Dividend

CONFIPET : Rs 0.05/-

SIYSIL : Rs 2.2/-

VISHALBL : Rs 0.50/-

( Exdate : 4.12.2017 )

#### Consolidation of Shares

JMDVL

( Exdate : 4.12.2017 )

#### Stock Split

UNICRSE ( From Rs.5/- to Rs.1/-)

( Exdate : 4.12.2017 )

**Quote of the Day** : The line separating investment and speculation, which is never bright and clear, becomes blurred still further when most market participants have recently enjoyed triumphs. Nothing sedates rationality like large doses of effortless money." **Warren Buffett**

**PERSISTENT**

"BUY"

4th Dec 2017

Post FY15, Persistent has branched into product-centric partnerships like IBM-IoT in 4QFY16 and co-development of platforms/ solutions as USAA and Partners HealthCare in 4QFY17. We believe these have a longer runway for revenue generation for persistent. Additionally, revenue from Parx, consequent strength in Europe and monetization of partnerships makes us optimistic for future performance of the company. Persistent EBITDA have bottomed out and has start showing improvement ending the 3 years of diminution from 26% in FY14 to 16% in FY17. 2QFY18 has shown a decent sequential improvement in profitability which is expected to continue in 2HFY18 despite the negative impact of wage hikes. Moreover the management also believes FY18E margins to surpass FY17 levels, despite headwinds has made us believe to expect good performance in coming quarters. We expect Persistent to report 17% earning CAGR over FY17/19E. We recommend BUY on the stock with the target price of Rs 760 at 14.7x FY19e EPS.

**IGL**

"NEUTRAL"

1st Dec 2017

IGL is the sole distributor of City Gas in Delhi NCR and with its pro-active participation in the bidding process for new geographies IGL is expanding its footprint in the adjoining areas of Delhi NCR. IGL has bidden for City Gas Distribution Rights with PNGRB for cities like Karnal, Bulandshahar and Kurekshetra. Management expects that company will get approval of at least for one city, which will help the company to foray its footprint in un-tapped markets.

As per the IGL estimates about 626 busses, 3000 auto/taxis and 18000 private CNG vehicles are added in Delhi NCR in the first half of FY18 and management guided that nearly 3,000-4,000 private cars and 1,000 taxis are getting converted into CNG every month. Further the management has targeted to add about 1 Lakh new PNG connections every year. This will lead to 10-12% CAGR volume growth for the next 2-3 years.

At current the stock is trading at 10x FY19E EPS. Considering the current rally in the stock price, valuation seems quite higher and hence we remain Neutral with the target price of Rs.304

\*For details, refer to our daily report- *India Equity Analytics***Top News**

>> **LT Foods** will invest USD 20 million for branding and expansion in Europe, as it eyes a six times increase in sales from the branded segment over the next four years

The company is extensively working on expanding its geographical footprints and product portfolio in these markets and plans to invest USD 20 million with increased sales from the current 5,000 tonnes to 30,000 tonnes in the branded segment over the next four years

LT Foods, which sells basmati rice under Daawat brand, has been focusing on Europe as the next growth region and has recently opened a new plant in Rotterdam, Netherlands to cater to both Europe and UK.

>> **Uflex** has forayed into aseptic packaging . Aseptic packaging is very lucrative in the overall packaging business . The margins are pretty stable but in the last quarter engineering business was not satisfactory.

>> **Power Finance Corporation (PFC)** has raised USD 400 million through its maiden green bond issue. The bond issuance saw diverse participation from high quality investors across Asia and Europe. PFC has successfully priced this 10-year Reg S Green Bond at a fixed rate coupon of 3.75 percent

>> **Tata Steel** will acquire 74 percent stake in Bhubaneswar Power Private Ltd (BPPL) from JL Power Ventures Private Ltd for Rs 255 crore to ramp up its captive source of power.

The acquisition provides an opportunity to Tata Steel to meet growing power demand

>> **JK Cement** is seeking to almost double its grey cement capacity to 18 million tonnes in four years with brownfield and greenfield expansions.

The company, whose grey cement business is considered by some analysts to be undervalued by the capital markets, is embarking on a brownfield expansion of 3.5 million tonnes at its Mangrol facility in Rajasthan.

This will involve capital expenditure of about Rs 1,500 crore. Mangrol work is expected to begin by end of this fiscal and commissioning is expected by end of 2019

>> **Bajaj Hindusthan Sugar** said that S4A debt resolution plan submitted by lead bank State Bank of India on behalf of Joint Lenders Forum has been approved by overseeing committee.

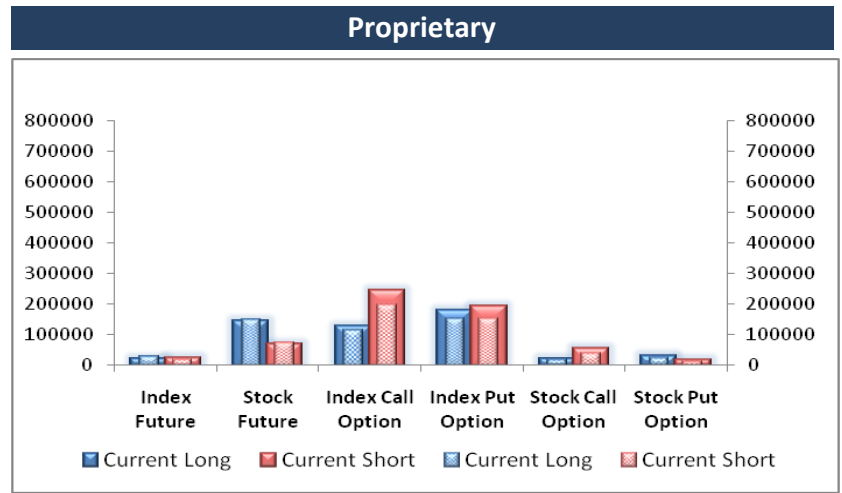
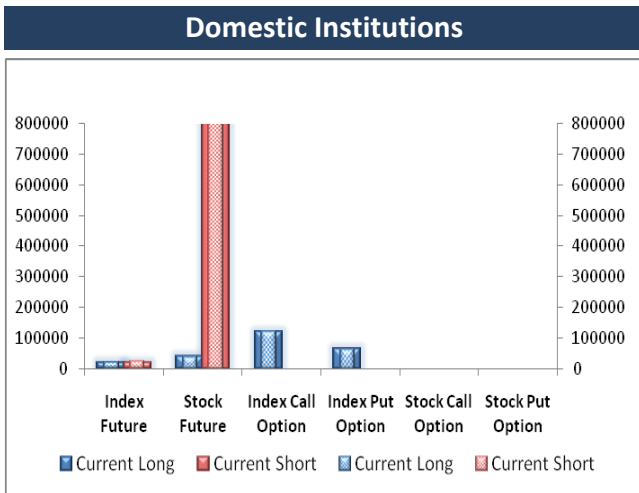
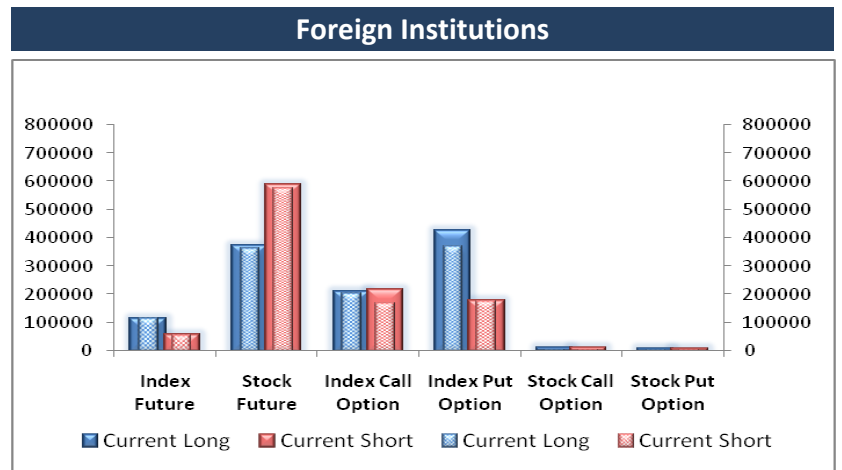
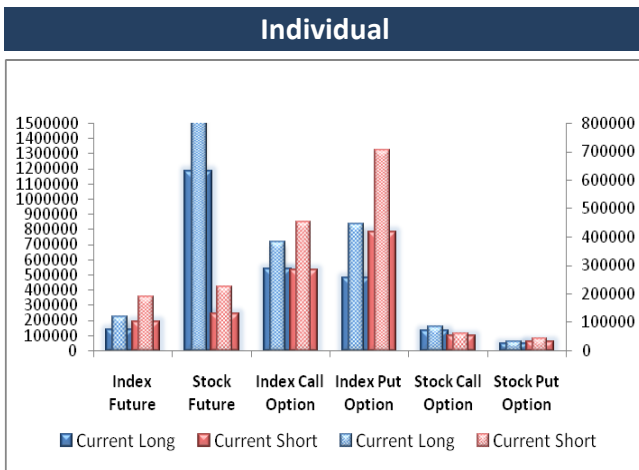
As per the plan, out of total debt of Rs 8,284.59 crore considered under the S4A scheme, the sustainable debt (Part A) is considered at Rs 4,789.35 crore (57.81 percent) whereas balance debt of Rs 3,495.25 crore (42.19 percent) is considered as unsustainable debt (Part B)

>> **Biocon** settled with gains of over three percent on the bourses after the European Medicines Agency accepted its partner Mylan's marketing authorisation applications for two proposed biosimilars. The European Medicines Agency (EMA) has accepted for review Mylan's Marketing Authorisation Applications (MAA) for proposed biosimilar trastuzumab and proposed biosimilar pegfilgrastim . Mylan had resubmitted marketing authorisation applications with EMA for the two biosimilars

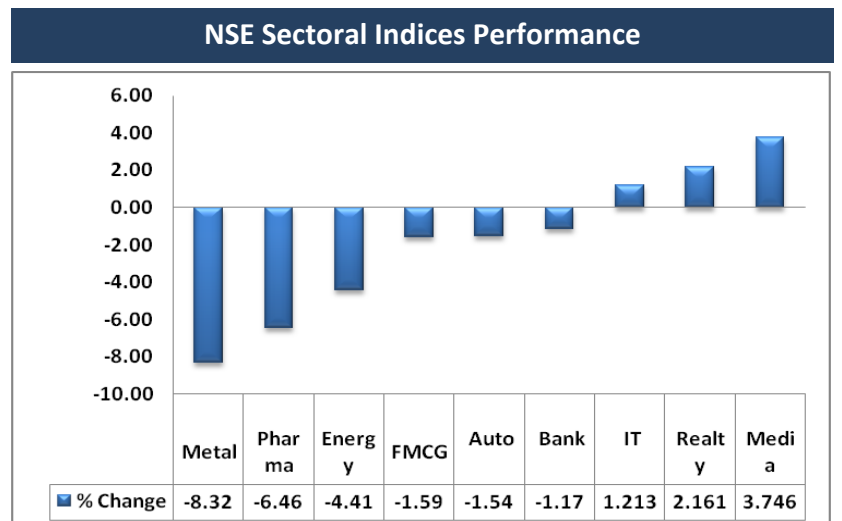
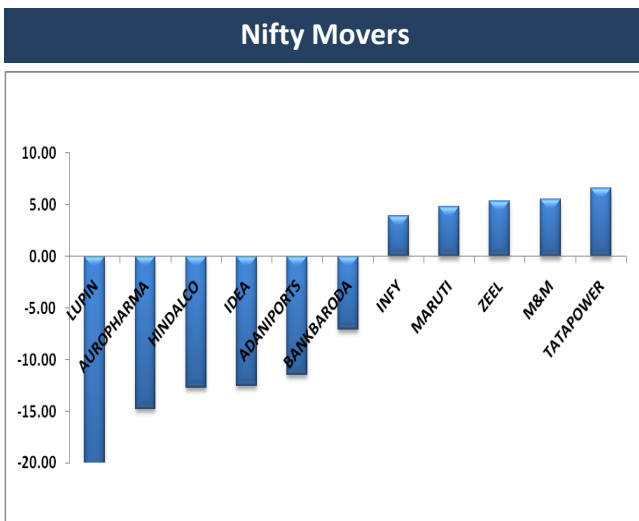
### Block Deal

| Exchange | Deal Date | Company    | Client Name                                  | Deal Type | Quantity | Price |
|----------|-----------|------------|--|-----------|----------|-------|
| NSE      | 1-Dec-17  | 5PAISA     | ALTAVISTA CAPITAL INDIA FUND LIMITED         | BUY       | 119415   | 200   |
| NSE      | 1-Dec-17  | 5PAISA     | LOBCO LIMITED                                | BUY       | 88906    | 199   |
| NSE      | 1-Dec-17  | ARSSINFRA  | BP COMTRADE PVT LTD                          | BUY       | 69873    | 71    |
| NSE      | 1-Dec-17  | ARSSINFRA  | GRAVITON RESEARCH CAPITAL LLP                | BUY       | 81307    | 72    |
| NSE      | 1-Dec-17  | COMPINFO   | PURITY TRADEMAX LLP                          | BUY       | 388220   | 39    |
| NSE      | 1-Dec-17  | DIGJAMLTD  | J S L ENTERPRISES                            | BUY       | 455000   | 19    |
| NSE      | 1-Dec-17  | EKC        | DINESH. L. GHURIA HUF                        | BUY       | 589000   | 54    |
| NSE      | 1-Dec-17  | EXCEL      | DAVE AARTI C.                                | BUY       | 255394   | 128   |
| NSE      | 1-Dec-17  | EXCEL      | LOPA SAUMIL BHAVNAGARI                       | BUY       | 202825   | 126   |
| NSE      | 1-Dec-17  | GITANJALI  | ASHOK KUMAR GUPTA                            | BUY       | 1611112  | 83    |
| NSE      | 1-Dec-17  | GITANJALI  | PATEL MANAV NARESHBHAI                       | BUY       | 1982517  | 83    |
| NSE      | 1-Dec-17  | GITANJALI  | SHETH BROTHERS                               | BUY       | 600855   | 84    |
| NSE      | 1-Dec-17  | HIGHGROUND | ALFA FISCAL SERVICES PVT LTD                 | BUY       | 700000   | 15    |
| NSE      | 1-Dec-17  | HIGHGROUND | SUNITA JAKHAR                                | BUY       | 257000   | 15    |
| NSE      | 1-Dec-17  | MOLDTECH   | CLARION ENTERPRISES                          | BUY       | 145000   | 76    |
| NSE      | 1-Dec-17  | NITCO      | ARKAYA INVESTMENTS                           | BUY       | 413236   | 94    |
| NSE      | 1-Dec-17  | TRF        | ELIXIR WEALTH MANAGEMENT PRIVATE LIMITED     | BUY       | 57235    | 307   |
| NSE      | 1-Dec-17  | TRF        | MILLENNIUM STOCK BROKING PVT. LTD.           | BUY       | 65473    | 307   |
| NSE      | 1-Dec-17  | TRF        | N.K. SECURITIES                              | BUY       | 195142   | 310   |
| NSE      | 1-Dec-17  | TRF        | VAIBHAV DOSHI                                | BUY       | 90981    | 313   |
| NSE      | 1-Dec-17  | VIKASECO   | ADROIT FINANCIAL SERVICES PRIVATE LIMITED    | BUY       | 1607816  | 35    |
| NSE      | 1-Dec-17  | ZANDUREALT | ASHWIN STOCKS AND INVESTMENT PRIVATE LIMITED | BUY       | 8298     | 2620  |
| NSE      | 1-Dec-17  | ZANDUREALT | RAHUL DOSHI                                  | BUY       | 5717     | 2640  |
| NSE      | 1-Dec-17  | ZANDUREALT | WAY2WEALTH ENTERPRISES PRIVATE LIMITED       | BUY       | 4033     | 2605  |
| NSE      | 1-Dec-17  | ARSSINFRA  | BP COMTRADE PVT LTD                          | SELL      | 76496    | 71    |
| NSE      | 1-Dec-17  | ARSSINFRA  | GRAVITON RESEARCH CAPITAL LLP                | SELL      | 81307    | 72    |
| NSE      | 1-Dec-17  | COMPINFO   | PURITY TRADEMAX LLP                          | SELL      | 388220   | 39    |
| NSE      | 1-Dec-17  | EXCEL      | DAVE AARTI C.                                | SELL      | 255394   | 127   |
| NSE      | 1-Dec-17  | EXCEL      | LOPA SAUMIL BHAVNAGARI                       | SELL      | 202825   | 126   |
| NSE      | 1-Dec-17  | GITANJALI  | ASHOK KUMAR GUPTA                            | SELL      | 1688391  | 82    |
| NSE      | 1-Dec-17  | GITANJALI  | CHAITYA RAJESH SHAH                          | SELL      | 620574   | 83    |
| NSE      | 1-Dec-17  | GITANJALI  | PATEL MANAV NARESHBHAI                       | SELL      | 1982517  | 83    |
| NSE      | 1-Dec-17  | GITANJALI  | RAKESH GIRDHARLAL GAJERA                     | SELL      | 1801376  | 82    |
| NSE      | 1-Dec-17  | GITANJALI  | SHETH BROTHERS                               | SELL      | 600855   | 84    |
| NSE      | 1-Dec-17  | HIGHGROUND | SUNITA JAKHAR                                | SELL      | 585963   | 15    |
| NSE      | 1-Dec-17  | HUBTOWN    | EPOCH SYNTHETICS PVT LTD                     | SELL      | 380000   | 134   |
| NSE      | 1-Dec-17  | MOLDTECH   | CLARION ENTERPRISES                          | SELL      | 12500    | 76    |
| NSE      | 1-Dec-17  | NITCO      | ARKAYA INVESTMENTS                           | SELL      | 413236   | 95    |
| NSE      | 1-Dec-17  | SABTN      | ASHWIN STOCKS AND INVESTMENT PRIVATE LIMITED | SELL      | 339429   | 18    |
| NSE      | 1-Dec-17  | SABTN      | CANARA BANK SECURITIES LIMITED               | SELL      | 217016   | 19    |
| NSE      | 1-Dec-17  | TRF        | ELIXIR WEALTH MANAGEMENT PRIVATE LIMITED     | SELL      | 57235    | 307   |
| NSE      | 1-Dec-17  | TRF        | MILLENNIUM STOCK BROKING PVT. LTD.           | SELL      | 65334    | 307   |
| NSE      | 1-Dec-17  | TRF        | N.K. SECURITIES                              | SELL      | 195142   | 310   |
| NSE      | 1-Dec-17  | TRF        | VAIBHAV DOSHI                                | SELL      | 146981   | 312   |
| NSE      | 1-Dec-17  | VIKASECO   | ADROIT FINANCIAL SERVICES PRIVATE LIMITED    | SELL      | 1607816  | 35    |
| NSE      | 1-Dec-17  | ZANDUREALT | ASHWIN STOCKS AND INVESTMENT PRIVATE LIMITED | SELL      | 8548     | 2629  |
| NSE      | 1-Dec-17  | ZANDUREALT | RAHUL DOSHI                                  | SELL      | 5717     | 2617  |
| NSE      | 1-Dec-17  | ZANDUREALT | WAY2WEALTH ENTERPRISES PRIVATE LIMITED       | SELL      | 4033     | 2606  |

## F&O OPEN INTEREST ( Number of Contracts )



## MARKET MOVERS ( 1 MONTH CHANGE )



**Result Calendar Q2FY18**

| BSE Code | Company Name | Date     | BSE Code | Company Name | Date     |
|----------|--------------|----------|----------|--------------|----------|
| 526397   | ALPHAGEO     | 4-Dec-17 | 530313   | LAURLOR      | 5-Dec-17 |
| 524634   | ALUFLUOR     | 4-Dec-17 | 539542   | LUXIND       | 5-Dec-17 |
| 531719   | BHAGCHEM     | 4-Dec-17 | 500268   | MANALIPETC   | 5-Dec-17 |
| 530801   | DIAMOND      | 4-Dec-17 | 504058   | NIPPOBATRY   | 5-Dec-17 |
| 533149   | ESSARSEC     | 4-Dec-17 | 521062   | OCTAVE       | 5-Dec-17 |
| 532768   | FIEMIND      | 4-Dec-17 | 530365   | ORIENTBELL   | 5-Dec-17 |
| 531813   | GANGAPA      | 4-Dec-17 | 523648   | PLASTIBLEN   | 5-Dec-17 |
| 506480   | GOCLCORP     | 4-Dec-17 | 531257   | PRATIKSH     | 5-Dec-17 |
| 533761   | GPTINFRA     | 4-Dec-17 | 505800   | RANEHOLDIN   | 5-Dec-17 |
| 524342   | INDOBORAX    | 4-Dec-17 | 509020   | RUCHINFRA    | 5-Dec-17 |
| 504746   | INLCM        | 4-Dec-17 | 530449   | RUNGTAIR     | 5-Dec-17 |
| 500211   | INSILCO      | 4-Dec-17 | 521222   | SANBLUE      | 5-Dec-17 |
| 504076   | JYOTI        | 4-Dec-17 | 517360   | SBECYSYS     | 5-Dec-17 |
| 523876   | JYOTIOVR     | 4-Dec-17 | 526117   | SHERVANI     | 5-Dec-17 |
| 501261   | KRATOSENER   | 4-Dec-17 | 533301   | SPYL         | 5-Dec-17 |
| 532796   | LUMAXTECH    | 4-Dec-17 | 522215   | SWISSGLA     | 5-Dec-17 |
| 500790   | NESTLEIND    | 4-Dec-17 | 531373   | THEBYKE      | 5-Dec-17 |
| 519528   | NORBTEAEXP   | 4-Dec-17 | 506808   | TUTIALKA     | 5-Dec-17 |
| 504378   | NYSSACORP    | 4-Dec-17 | 522029   | WINDMACHIN   | 5-Dec-17 |
| 517258   | PRECISIO     | 4-Dec-17 | 509650   | ZHINDHSG     | 5-Dec-17 |
| 512217   | PRISMMEDI    | 4-Dec-17 | 520123   | ABCINDQ      | 6-Dec-17 |
| 513369   | RJKMRFR      | 4-Dec-17 | 523120   | ADORMUL      | 6-Dec-17 |
| 506642   | SADHNANIQ    | 4-Dec-17 | 517041   | ADORWELD     | 6-Dec-17 |
| 504918   | SANDUMA      | 4-Dec-17 | 531400   | ALMONDZ      | 6-Dec-17 |
| 526739   | SHAWGELTIN   | 4-Dec-17 | 506074   | ARSHIYA      | 6-Dec-17 |
| 512289   | SHIRPUR-G    | 4-Dec-17 | 524695   | ASIANFR      | 6-Dec-17 |
| 539334   | SHREEPUSHK   | 4-Dec-17 | 505690   | BRADYM       | 6-Dec-17 |
| 505515   | SHYMINV      | 4-Dec-17 | 517544   | CENTUM       | 6-Dec-17 |
| 590030   | SPIC         | 4-Dec-17 | 526355   | DUROPACK     | 6-Dec-17 |
| 524582   | TIRUSTA      | 4-Dec-17 | 523277   | GVFILM       | 6-Dec-17 |
| 532372   | VIRINCHI     | 4-Dec-17 | 504092   | INDOKEM      | 6-Dec-17 |
| 506981   | BLUECHIPT    | 5-Dec-17 | 538092   | JOONKTOLL    | 6-Dec-17 |
| 530809   | BNRUDY       | 5-Dec-17 | 530145   | KISAN        | 6-Dec-17 |
| 523489   | CMMHOSP      | 5-Dec-17 | 533482   | KRIINFRA     | 6-Dec-17 |
| 532839   | DISHTV       | 5-Dec-17 | 505302   | LXMIATO      | 6-Dec-17 |
| 514358   | EVERLON      | 5-Dec-17 | 512024   | NDMETAL      | 6-Dec-17 |
| 517288   | GUJARATPOLY  | 5-Dec-17 | 532486   | POKARNA      | 6-Dec-17 |
| 500467   | HARRMALAYA   | 5-Dec-17 | 506605   | POLYCHEM     | 6-Dec-17 |
| 532761   | HOVS         | 5-Dec-17 | 530815   | REFNOL       | 6-Dec-17 |
| 539692   | IFINSER      | 5-Dec-17 | 526479   | SKYIND       | 6-Dec-17 |
| 532894   | INDOWIND     | 5-Dec-17 | 517166   | SPELS        | 6-Dec-17 |
| 536709   | INDRENEW     | 5-Dec-17 | 500777   | TNPETRO      | 6-Dec-17 |
| 524731   | JENBURPH     | 5-Dec-17 | 501391   | WHBRADY      | 6-Dec-17 |
| 507987   | JPTRLES      | 5-Dec-17 | 514470   | WINSOMTX     | 6-Dec-17 |
| 539599   | KEL          | 5-Dec-17 | 524758   | WINTAC       | 6-Dec-17 |
| 507474   | KFBL         | 5-Dec-17 | 533221   | AHLWEST      | 7-Dec-17 |

|        |            |          |        |             |          |
|--------|------------|----------|--------|-------------|----------|
| 531673 | ANKIN      | 7-Dec-17 | 539545 | APOORVA     | 8-Dec-17 |
| 506260 | ANUHPHR    | 7-Dec-17 | 526662 | ARENTERP    | 8-Dec-17 |
| 531677 | ARISINT    | 7-Dec-17 | 530355 | ASIANOI     | 8-Dec-17 |
| 524828 | BDH        | 7-Dec-17 | 532668 | AURIONPRO   | 8-Dec-17 |
| 526666 | BIL        | 7-Dec-17 | 511589 | AVONMORE    | 8-Dec-17 |
| 500074 | BPL        | 7-Dec-17 | 507944 | BAJAJST     | 8-Dec-17 |
| 526731 | BRIGHTBR   | 7-Dec-17 | 532946 | BANG        | 8-Dec-17 |
| 531621 | CENTERAC   | 7-Dec-17 | 539799 | BHARATWIRE  | 8-Dec-17 |
| 532807 | CINELINE   | 7-Dec-17 | 512341 | CESL        | 8-Dec-17 |
| 532801 | CTE        | 7-Dec-17 | 532271 | CYBERMAT    | 8-Dec-17 |
| 530023 | FORTUNEF   | 7-Dec-17 | 526821 | DAICHI      | 8-Dec-17 |
| 590025 | GINNIFILA  | 7-Dec-17 | 533176 | DQE         | 8-Dec-17 |
| 515147 | HALDYNGL   | 7-Dec-17 | 532820 | ELAND       | 8-Dec-17 |
| 500193 | HOTELEELA  | 7-Dec-17 | 517477 | ELNET       | 8-Dec-17 |
| 504731 | IBRIGST    | 7-Dec-17 | 536751 | FIVEXTRADE  | 8-Dec-17 |
| 531594 | INCON      | 7-Dec-17 | 505744 | FMGOETZE    | 8-Dec-17 |
| 504741 | INDIANHUME | 7-Dec-17 | 526073 | GALXBRG     | 8-Dec-17 |
| 526445 | INDRANIB   | 7-Dec-17 | 532773 | GLOBALVECT  | 8-Dec-17 |
| 500319 | INDSUCR    | 7-Dec-17 | 532847 | HILTON      | 8-Dec-17 |
| 532617 | JETAIRWAYS | 7-Dec-17 | 504713 | HINDWRS     | 8-Dec-17 |
| 500284 | LORDSCHLO  | 7-Dec-17 | 509715 | JAYSHRETEA  | 8-Dec-17 |
| 514036 | LOYALTEX   | 7-Dec-17 | 513693 | KAJARIR     | 8-Dec-17 |
| 516007 | MANGTIMBER | 7-Dec-17 | 501151 | KARTKIN     | 8-Dec-17 |
| 538942 | MERCANTILE | 7-Dec-17 | 532054 | KDDL        | 8-Dec-17 |
| 526169 | MULTIBASE  | 7-Dec-17 | 519602 | KELLTONTEC  | 8-Dec-17 |
| 531832 | NAGTECH    | 7-Dec-17 | 530421 | KUWERIN     | 8-Dec-17 |
| 524774 | NGLFINE    | 7-Dec-17 | 506079 | LAKPRE      | 8-Dec-17 |
| 534190 | OLPCL      | 7-Dec-17 | 509762 | MAPROIN     | 8-Dec-17 |
| 503092 | PASUSPG    | 7-Dec-17 | 531394 | MARVINY     | 8-Dec-17 |
| 523539 | PRECWIRE   | 7-Dec-17 | 538401 | METSL       | 8-Dec-17 |
| 507300 | RAVALSUGAR | 7-Dec-17 | 522235 | MINALIND    | 8-Dec-17 |
| 517273 | S&SPOWER   | 7-Dec-17 | 500298 | NATPEROX    | 8-Dec-17 |
| 526085 | SGARRES    | 7-Dec-17 | 520021 | OMAXAUTO    | 8-Dec-17 |
| 532945 | SHRIRAMEPC | 7-Dec-17 | 531779 | PADALPO     | 8-Dec-17 |
| 533014 | SICAGEN    | 7-Dec-17 | 506122 | PANKAJPIYUS | 8-Dec-17 |
| 521200 | SURYALAXMI | 7-Dec-17 | 540359 | PARMAX      | 8-Dec-17 |
| 524488 | SVCIND     | 7-Dec-17 | 517417 | PATELSAI    | 8-Dec-17 |
| 526953 | VENUSREM   | 7-Dec-17 | 531454 | POLYLINK    | 8-Dec-17 |
| 511509 | VIVOBLOT   | 7-Dec-17 | 500540 | PREMIER     | 8-Dec-17 |
| 524212 | WANBURY    | 7-Dec-17 | 506618 | PUNJABCHEM  | 8-Dec-17 |
| 532616 | XCHANGING  | 7-Dec-17 | 500360 | RAPICUT     | 8-Dec-17 |
| 512553 | ZENITHEXPO | 7-Dec-17 | 523021 | RISHITECH   | 8-Dec-17 |
| 531404 | ZICOM      | 7-Dec-17 | 516003 | SARDAPLY    | 8-Dec-17 |
| 512291 | ZSPEEDCO   | 7-Dec-17 | 526093 | SATHAISPAT  | 8-Dec-17 |
| 526921 | 21STCENMGM | 8-Dec-17 | 505141 | SCOOTER     | 8-Dec-17 |
| 511706 | ACTIONFI   | 8-Dec-17 | 532217 | SIELFNS     | 8-Dec-17 |
| 500003 | AEGISLOG   | 8-Dec-17 | 530017 | SIL         | 8-Dec-17 |
| 513349 | AJMERA     | 8-Dec-17 | 508905 | SMIFS       | 8-Dec-17 |
| 523007 | ANSALBU    | 8-Dec-17 | 521034 | SOMATEX     | 8-Dec-17 |

### Economic Calendar

| Country      | Monday<br>4th Dec 17  | Tuesday<br>5th Dec 17  | Wednesday<br>6th Dec 17  | Thursday<br>7th Dec 17  | Friday<br>8th Dec 17  |
|--------------|---|--|--|---|---|
| US           | Factory Orders m/m  | Trade Balance , Final Services PMI , ISM Non-Manufacturing PMI , IBD/TIPP Economic Optimism  | ADP Non-Farm Employment Change , Revised Nonfarm Productivity q/q , Revised Unit Labor Costs q/q , Crude Oil Inventories | Challenger Job Cuts y/y , Unemployment Claims , Natural Gas Storage , Consumer Credit m/m   | Average Hourly Earnings m/m , Non-Farm Employment Change, Unemployment Rate , Final Wholesale Inventories m/m   |
| UK/EURO ZONE | Spanish Unemployment Change , Retail PMI , Sentix Investor Confidence , Construction PMI , PPI m/m , Eurogroup Meetings | French Trade Balance , Spanish Services PMI , Italian Services PMI , French Final Services PMI , German Final Services PMI , Final Services PMI , Services PMI , FPC Meeting Minutes | German Factory Orders m/m , Italian Quarterly Unemployment Rate, 10-y Bond Auction , NIESR GDP Estimate                  | French Final Private Payrolls q/q , German Industrial Production m/m, French Gov Budget Balance , Halifax HPI m/m , Italian Industrial Production m/m | German Trade Balance , French Industrial Production m/m, Manufacturing Production m/m , Goods Trade Balance , Construction Output m/m , Consumer Inflation Expectations , Industrial Production m/m |
| INDIA        |   |  |  |   |   |

## DISCLAIMER

This document has been prepared by Microsec Capital Limited (hereinafter referred to as MCL) to provide information about the Company (ies)/ sector(s), if any, covered in the report and may be distributed by it and/or its associates.

This report does not construe to be any investment, legal or taxation advice. This research report does not constitute an offer, invitation or inducement to invest in securities or other investments and MCL is not soliciting any action based upon it. This report should not be reproduced or redistributed to any other person in any form. This report does not constitute a personal recommendation or take into account the particular investment objectives, financial situations, or needs of individual clients. Before acting on any advice or recommendation in this report, investors should consider whether it is suitable for their particular circumstances and, if necessary, seek professional advice. Neither MCL, its subsidiaries/ Associates, nor its directors, employees, agents, representatives shall be liable for any damages whether direct or indirect, incidental, special or consequential including lost revenue or lost profits that may arise from or in connection with the use of the information/research reports/ opinions expressed herein.

While we would endeavour to update the information herein on reasonable basis, MCL and/or its associates are under no obligation to update the information. Also there may be regulatory, compliance, or other reasons that may prevent MCL and/or its associates from doing so. MCL/it's associates or employees shall not in any way be responsible and liable for any loss or damage that may arise to any person from any inadvertent error in the information contained in this report. MCL/it's associates or employees do not provide, at any time, any express or implied warranty of any kind, regarding any matter pertaining to this report, including without limitation the implied warranties of merchantability, fitness for a particular purpose, and non-infringement. The recipients of this report should rely on their own investigations.

MCL and its associates, their directors and employees and their relatives may; (a) from time to time, have a long or short position in, act as principal in, and buy or sell the securities or derivatives thereof of companies mentioned herein. (b) be engaged in any other transaction involving such securities and earn brokerage or other compensation or act as a market maker in the financial instruments of the company(ies) discussed herein or may have any other potential conflict of interests with respect to any recommendation and other related information and opinions.; however the same shall have no bearing whatsoever on the specific recommendations made by the analyst(s), as the recommendations made by the analyst(s) are completely independent of the views of the associates of MCL even though there might exist an inherent conflict of interest in some of the stocks mentioned in the research report.

MCL and/or its affiliates and/or employees may have interests/positions, financial or otherwise of over 1% at the end of the month immediately preceding the date of publication of the research in the securities mentioned in this report.

The research professionals responsible for the preparation of this document may interact with trading desk personnel, sales personnel and other parties for the purpose of gathering, applying and interpreting information. Subject Company may have been a client of MCL or its associates during twelve months preceding the date of distribution of the research report. MCL or its associates may have investment banking and other business relationships with some companies covered by our Research Department. Any or all of the foregoing among other things, may give rise to real or potential conflicts of interest.

MCL and it's associates may have managed or co-managed public offering of securities, may have received compensation for investment banking or merchant banking or brokerage services, may have received any compensation for products or services other than investment banking or merchant banking or brokerage services from the subject company in the past 12 months. MCL and it's associates have not received any compensation or other benefits from the subject company or third party in connection with the research report.

Microsec Capital Ltd. ("MCL") is SEBI registered Research Analyst under SEBI (Research Analyst) Regulation 2014 having registration Number INH300002407. Besides, MCL is SEBI registered stock broker, Depository Participant, Merchant Banker, Portfolio Management Services, AMFI registered Mutual Fund distributor, Insurance Repository, POP with PFRDA.

The Company issues research reports to clients/prospective clients/others without any additional fees/charge.No material disciplinary action impacting equity research analysis activities has been taken by any statutory/ Regulatory authority against MCL.

Analyst Certification The matter related to the report has been taken from sources believed reliable and the views expressed about the subject or issues in this report accurately reflect the personal views of the analyst/analysts. MCL does not compensate partly or in full, directly or indirectly, related to specific recommendations or views expressed by the research analysts. Disclosure of interest statement of research analyst is as below:

- |   |     |
|---|-----|
| 1.Analyst's ownership of the stocks mentioned                   | NIL |
| 2.Served as an officer, director or employee in subject Company | NO  |

Offices No: 6 , 5th floor Tower- IIInd,  
Stellar IT Park Plot No. C -25 , Sector – 62 ,  
Noida – 201309 . Delhi NCR Phone : +91-120-4155509  
Email: research.insti@microsec.in, Website: www.microsec.in