

4-May-18

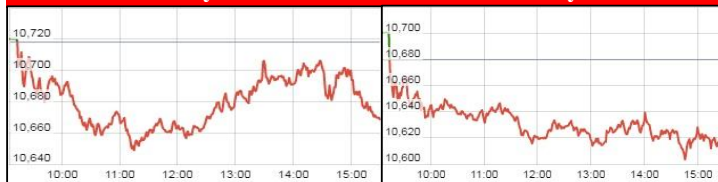
Market Roundup

- Today Nifty opened in positive at the day high of **10700** levels, from there it's started dragging towards too low of **10601** levels & closed in negative at **10618** levels.
- **Positive Sector in Nifty:** PVT BANK.
- **Negative Sector in Nifty:** AUTO, FMCG, IT, MEDIA, REALTY, FINSERVICE, METAL, PHARMA, PSU BANK.
- India VIX gain marginally by **1.03%** to 13.1200.
- Maximum open interest in Call: 11000 levels (5800200)
- Maximum open interest in Put: 10500 levels (4816725)
- Highest change in OI for call: 10700 levels **(+583,950)**
- Highest change in OI for Put: 10400 levels **(+692,850)**

NIFTY Intraday Chart

3-May-18

4-May-18



Market

Todays Closing

Market	Value	Points	% Change
Sensex	34,915.38	-187.76	-0.53
Nifty	10,618.25	-61.40	-0.57
Nifty Bank	25,645.40	40.15	0.16

Advance / Decline

Group	Nifty Bank	Nifty 50	Sensex
Advance	5	11	9
Decline	6	37	21
Unchanged	0	2	1

Top Nifty - 50 Index Gainers

Symbol	LTP	% Change
ADANI PORTS	408	2.77
GAIL	330	2.12
TECHM	663	1.54
HINDUNILVR	1,467.00	1.02
HDFCBANK	1,985.40	0.89

Top Nifty - 50 Index Losers

Symbol	LTP	% Change
SUNPHARMA	517.25	-3.5
ITC	276.85	-2.86
BAJAJ-AUTO	2,893.30	-2.75
VEDL	279.5	-2.34
YESBANK	345.65	-2.34

Derivative Market

Derivative Volumes (INR in Crores)

Exchange	No. of Contracts	Turn Over cr
Index Futures	1,48,314	13,133.33
Stock Futures	7,31,724	47,867.94
Index Options	29,09,603	2,73,324.22
Stock Options	4,85,911	33,280.96
F&O Total	42,75,552	3,67,606.45

Stock in Ban period

3-May-18

4-May-18

PCJEWELLER	Nil	PCJEWELLER	Nil
IRB	Nil	IRB	Nil
Nil	Nil	JUSTDIAL	Nil
Nil	Nil	JETAIRWAYS	Nil
Nil	Nil	Nil	Nil
Nil	Nil	Nil	Nil

Nifty Most Active Call

Index Option	Price INR	No. of Contract in VOL	lacs OI
11000	21	88107	5800200
10800	71.25	103796	3861825
10900	40.5	81130	3343425
10700	116	115063	2943375
10600	172.6	31677	1636725

Nifty Most Active Put

Index Option	Price INR	No. of Contract in VOL	lacs OI
10500	80.5	80969	4816725
10400	57	67883	4114200
10600	114.8	95776	3433650
10300	40	37597	2929725
10000	15.5	25733	2692050

Technical Diary - Nifty



- Nifty opened in positive at the day high, from there it made low & closed in negative.
- It traded with negative bias .
- It closed 61 points below previous day close.
- It took Resistance & support at 10700 & 10601 respectively.

Technical Diary - Bank Nifty



- Bank Nifty opened in positive & made a low , from there it made a high & closed in positive.
- It traded with positive bias
- It closed 40 points above previous day close.
- It took Resistance & support at 25680 & 25537 respectively.

Technical Diary- Sensex



- Sensex opened in positive & made a high , from there it made a low & closed in negative.
- It traded with negative bias.
- It closed 187 points below previous day close.
- It took Resistance & support at 35206 & 34847 respectively

Technical Diary- India VIX



- India VIX gain marginally by 1.03% to 13.1200.
- It took Resistance & support at 13.46 & 10.99 respectively



Narnolia Securities Ltd

201 | 2nd Floor | Marble Arch Building | 236B-AJC Bose Road | Kolkata-700 020.

Ph : 033-40501500

email: narnolia@narnolia.com, website : www.narnolia.com

Risk Disclosure & Disclaimer: This report/message is for the personal information of the authorized recipient and does not construe to be any investment, legal or taxation advice to you. Narnolia Securities Ltd. (Hereinafter referred as NSL) is not soliciting any action based upon it. This report/message is not for public distribution and has been furnished to you solely for your information and should not be reproduced or redistributed to any other person in any form. The report/message is based upon publicly available information, findings of our research wing "East wind" & information that we consider reliable, but we do not represent that it is accurate or complete and we do not provide any express or implied warranty of any kind, and also these are subject to change without notice. The recipients of this report should rely on their own investigations, should use their own judgment for taking any investment decisions keeping in mind that past performance is not necessarily a guide to future performance & that the value of any investment or income are subject to market and other risks. Further it will be safe to assume that NSL and /or its Group or associate Companies, their Directors, affiliates and/or employees may have interests/ positions, financial or otherwise, individually or otherwise in the recommended/mentioned securities/mutual funds/ model funds and other investment products which may be added or disposed including & other mentioned in this report/message.