

16-Aug-18

## Market Roundup

•Today Nifty opened in negative at **11397** from there it made a high of **11449** and started moving downward and made a low of **11366** and closed in negative at **11385**.

•**Positive Sector in Nifty:** AUTO, FMCG, IT and PHARMA

•**Negative Sector in Nifty:** MEDIA, PSU BANK ,METALS , FIN SERVICE, PVT BANK, REALTY

• India VIX gained by **1.58%** to **13.49**

•Maximum open interest in Call: 11500 levels (4,580,325)

•Maximum open interest in Put: 11000 levels(5,181,675)

•Highest change in OI for call:11500 levels(**+365,175**)

•Highest change in OI for Put: 11500 levels (**-207,450**)

•Nifty future open interest: (2,93,00,775)

•Nifty future change in OI: (**+8,67,900**)

•Bank Nifty future open interest: (25,20,520)

•Bank Nifty future change in OI: (**-4,480**)

## NIFTY Intraday Chart



## Market

## Today's Closing

| Market     | Value  | Points | % Change |
|------------|--------|--------|----------|
| Sensex     | 37,664 | -188   | -0.50%   |
| Nifty      | 11,385 | -50    | -0.44%   |
| Nifty Bank | 27,827 | -195   | -0.70%   |

## Advance / Decline

| Group     | Nifty Bank | Nifty 50 | Sensex |
|-----------|------------|----------|--------|
| Advance   | 6          | 20       | 13     |
| Decline   | 6          | 30       | 18     |
| Unchanged | 0          | 0        | 0      |

## Top Nifty - 50 Index Gainers

| Symbol    | LTP    | % Change |
|-----------|--------|----------|
| GAIL      | 393.5  | 4        |
| DRREDDY   | 2357.6 | 3        |
| SUNPHARMA | 621    | 3        |
| LUPIN     | 849.2  | 1        |
| INFY      | 1429   | 1        |

## Top Nifty - 50 Index Losers

| Symbol     | LTP    | % Change |
|------------|--------|----------|
| KOTAKBANK  | 1245   | -4       |
| VEDL       | 209    | -3       |
| ZEEL       | 500.65 | -3       |
| HDFC       | 1892.2 | -3       |
| IBULHSGFIN | 1258.6 | -3       |

## Derivative Market

## Derivative Volumes (INR in Crores)

| Exchange      | No. of Contracts | Turn Over cr |
|---------------|------------------|--------------|
| Index Futures | 186629           | 18126        |
| Stock Futures | 787838           | 57550        |
| Index Options | 15045570         | 1644446      |
| Stock Options | 717191           | 56361        |
| F&O Total     | 16737228         | 1776484      |

## Stock in Ban period

| 14-Aug-18  | 16-Aug-18  |
|------------|------------|
| ADANIANT   | ADANIANT   |
| ADANIPOWER | ADANIPOWER |
| JETAIRWAYS | JETAIRWAYS |
| PNB        | PNB        |

## Nifty Most Active Call

| Index Option | Price INR | No. of Contract in lacs VOL | OI      |
|--------------|-----------|-----------------------------|---------|
| 11500        | 61.35     | 172854                      | 4580325 |
| 11400        | 110.9     | 134005                      | 3215775 |
| 11600        | 28.5      | 116821                      | 3195000 |
| 11700        | 11.25     | 73971                       | 2665200 |
| 12000        | 2.75      | 15051                       | 1944525 |

## Nifty Most Active Put

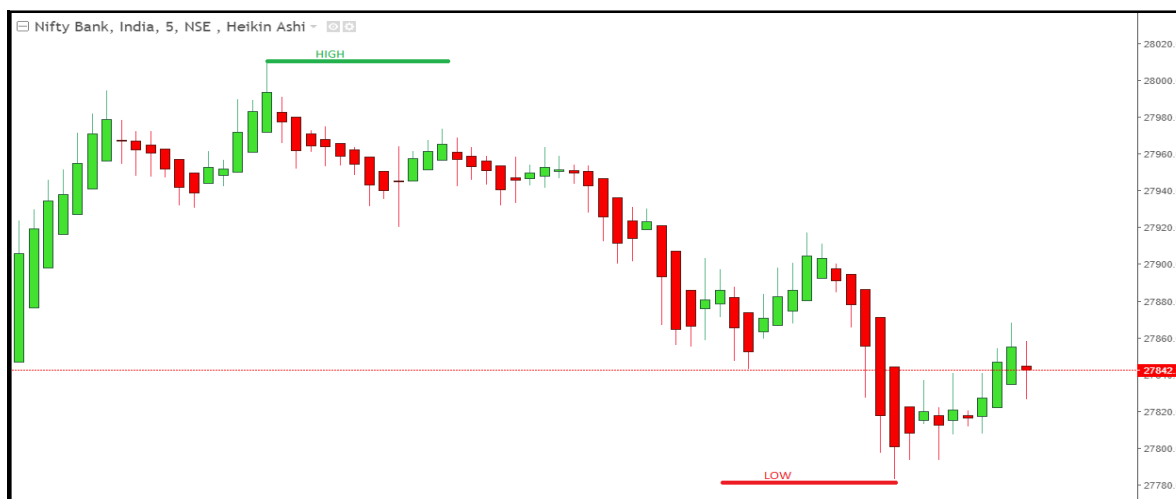
| Index Option | Price INR | No. of Contract in lacs VOL | OI      |
|--------------|-----------|-----------------------------|---------|
| 11000        | 16.6      | 53794                       | 5181675 |
| 11200        | 39        | 96967                       | 4474725 |
| 11300        | 60        | 132918                      | 4011075 |
| 11400        | 93        | 145177                      | 3115575 |
| 11100        | 25.3      | 54658                       | 2585625 |

## Technical Diary - Nifty



- Nifty opened in negative and made a high, from there it made a low & closed in negative.
- It traded with a negative bias.
- It closed 50 points below previous day close.
- It took Resistance & support at 11449 & 11366 respectively.

## Technical Diary - Bank Nifty



- Bank Nifty opened in negative & made a high, from there it made a low & and closed in negative.
- It traded with a negative bias.
- It closed 195 points below previous day close.
- It took Resistance & support at 28013 & 27779 respectively.

## Technical Diary- Sensex



- Sensex opened in negative and made a high, from there it made a low & closed in negative.
- It traded with a negative bias.
- It closed 188 points below previous day close.
- It took Resistance & support at 37891 & 37632 respectively.

## Technical Diary- India VIX



- India VIX gained by 1.58% to 13.49
- It took Resistance & support at 13.86 & 11.46 respectively.

## DISCLAIMER

The following Disclosures are being made in compliance with the SEBI Research Analyst Regulations 2014 (herein after referred to as the Regulations). Narnolia Financial Advisors Ltd. (Formerly Microsec Capital Ltd) (MCL) is a SEBI Registered Research Analyst having registration no. INH300002407. MCL, the Research Entity (RE) as defined in the Regulations, is engaged in the business of providing Stock broking services, Depository participant services, Merchant Banking, Portfolio Management & distribution of various financial products. MCL is a subsidiary company of G Raj & Company Consultants Ltd. (GRaj). MCL is registered with the Securities & Exchange Board of India (SEBI) and is a registered Trading Member with National Stock Exchange of India Ltd. (NSE), Bombay Stock Exchange Limited (BSE) and Metropolitan Stock Exchange Of India Ltd. (MSEI) for its stock broking activities & is Depository participant with Central Depository Services Limited (CDSL) & National Securities Depository Limited (NSDL) and is member of Association of Mutual Funds of India (AMFI) for distribution of financial products. MCL is also SEBI registered Category 1 Merchant Banker & Portfolio Manager. Details of associate entities of MCL is available on the website at [www.narnolia.com](http://www.narnolia.com)

No penalties have been levied on MCL by any Regulatory/Statutory authority. MCL, its associates, Research Analyst or their relative may have any financial interest in the subject company. MCL and/or its associates and/or Research Analyst may have beneficial ownership of 1% or more securities in the subject company at the end of the month immediately preceding the date of publication of the Research Report. MCL and its associate company(ies), their directors and Research Analyst and their relatives may; (a) from time to time, have a long or short position in, act as principal in, and buy or sell the securities or derivatives thereof of companies mentioned herein. (b) be engaged in any other transaction involving such securities and earn brokerage or other compensation or act as a market maker in the financial instruments of the company(ies) discussed herein or act as an advisor or lender/borrower to such company(ies) or may have any other potential conflict of interests with respect to any recommendation and other related information and opinions.; however the same shall have no bearing whatsoever on the specific recommendations made by the analyst(s), as the recommendations made by the analyst(s) are completely independent of the views of the associates of MCL even though there might exist an inherent conflict of interest in some of the stocks mentioned in the research report. Research Analyst may have served as director/officer, etc. in the subject company in the last 12 month period. MCL and/or its associates may have received any compensation from the subject company in the past 12 months. In the last 12 months period ending on the last day of the month immediately preceding the date of publication of this research report, MCL or any of its associates may have: a) managed or co-managed public offering of securities from subject company of this research report, b) received compensation for investment banking or merchant banking or brokerage services from subject company of this research report, c) received compensation for products or services other than investment banking or merchant banking or brokerage services from the subject company of this research report. d) Subject Company may have been a client of MCL or its associates during twelve months preceding the date of distribution of the research report. MCL and its associates have not received any compensation or other benefits from the subject company or third party in connection with the research report. MCL and / or its affiliates do and seek to do business including investment banking with companies covered in its research reports. As a result, the recipients of this report should be aware that MCL may have a potential conflict of interest that may affect the objectivity of this report. Compensation of Research Analysts is not based on any specific merchant banking, investment banking or brokerage service transactions.

**Terms & Conditions:** This report has been prepared by MCL and is meant for sole use by the recipient and not for circulation. The report and information contained herein is strictly confidential and may not be altered in any way, transmitted to, copied or distributed, in part or in whole, to any other person or to the media or reproduced in any form, without prior written consent of MCL. The report is based on the facts, figures and information that are considered true, correct, reliable and accurate. The intent of this report is not recommendatory in nature. The information is obtained from publicly available media or other sources believed to be reliable. Such information has not been independently verified and no guaranty, representation of warranty, express or implied, is made as to its accuracy, completeness or correctness. All such information and opinions are subject to change without notice. The report is prepared solely for informational purpose and does not constitute an offer document or solicitation of offer to buy or sell or subscribe for securities or other financial instruments for the clients. Though disseminated to all the customers simultaneously, not all customers may receive this report at the same time. MCL will not treat recipients as customers by virtue of their receiving this report.

**Analyst Certification** The views expressed in this research report accurately reflect the personal views of the analyst(s) about the subject securities or issues, and no part of the compensation of the research analyst(s) was, is, or will be directly or indirectly related to the specific recommendations and views expressed by research analyst(s) in this report.

**Disclosure of Interest Statement Companies where there is interest**

Analyst's ownership of the stocks mentioned NIL

A graph of daily closing prices of securities is available at [www.nseindia.com](http://www.nseindia.com), [www.bseindia.com](http://www.bseindia.com).

Research Analyst's views on Subject Company may vary based on Fundamental research and Technical Research. Proprietary trading desk of MCL or its associates maintains arm's length distance with Research Team as all the activities are segregated from MCL research activity and therefore it can have an independent view with regards to subject company for which Research Team have expressed their views.

This report is not directed or intended for distribution to or use by any person or entity resident in a state, country or any jurisdiction, where such distribution, publication, availability or use would be contrary to law, regulation or which would subject MCL & its group companies to registration or licensing requirements within such jurisdictions.

**Disclaimer:** The report and information contained herein is strictly confidential and meant solely for the selected recipient and may not be altered in any way, transmitted to, copied or distributed, in part or in whole, to any other person or to the media or reproduced in any form, without prior written consent. This report and information herein is solely for informational purpose and may not be used or considered as an offer document or solicitation of offer to buy or sell or subscribe for securities or other financial instruments. Nothing in this report constitutes investment, legal, accounting and tax advice or a representation that any investment or strategy is suitable or appropriate to your specific circumstances. The securities discussed and opinions expressed in this report may not be suitable for all investors, who must make their own investment decisions, based on their own investment objectives, financial positions and needs of specific recipient. This may not be taken in substitution for the exercise of independent judgment by any recipient. Each recipient of this document should make such investigations as it deems necessary to arrive at an independent evaluation of an investment in the securities of companies referred to in this document (including the merits and risks involved), and should consult its own advisors to determine the merits and risks of such an investment. The investment discussed or views expressed may not be suitable for all investors. Certain transactions -including those involving futures, options, another derivative products as well as non-investment grade securities - involve substantial risk and are not suitable for all investors. No representation or warranty, express or implied, is made as to the accuracy, completeness or fairness of the information and opinions contained in this document. This information is subject to change without any prior notice. The Company reserves the right to make modifications and alternations to this statement as may be required from time to time without any prior approval. MCL, its associates, their directors and the employees may from time to time, effect or have effected an own account transaction in, or deal as principal or agent in or for the securities mentioned in this document. They may perform or seek to perform investment banking or other services for, or solicit investment banking or other business from, any company referred to in this report. Each of these entities functions as a separate, distinct and independent of each other. The recipient should take this into account before interpreting the document. The views expressed are those of the analyst, and the Company may or may not subscribe to all the views expressed therein. This document is being supplied to you solely for your information and may not be reproduced, redistributed or passed on, directly or indirectly, to any other person or published, copied, in whole or in part, for any purpose. This report is not directed or intended for distribution to, or use by, any person or entity who is a citizen or resident of or located in any locality, state, country or other jurisdiction, where such distribution, publication, availability or use would be contrary to law, regulation or which would subject MCL to any registration or licensing requirement within such jurisdiction. The securities described herein may or may not be eligible for sell in all jurisdictions or to certain category of investors. Persons in whose possession this document may come are required to inform themselves of and to observe such restriction. Neither the Firm, not its directors, employees, agents or representatives shall be liable for any damages whether direct or indirect, incidental, special or consequential including lost revenue or lost profits or lost opportunities that may arise from or in connection with the use of the information. The person accessing this information specifically agrees to exempt MCL or any of its affiliates or employees from, any and all responsibility/liability arising from such misuse and agrees not to hold MCL or any of its affiliates or employees responsible for any such misuse and further agrees to hold MCL or any of its affiliates or employees free and harmless from all losses, costs, damages, expenses that may be suffered by the person accessing this information due to any errors and delays.

Correspondence Office Address: Arch Waterfront, 5th Floor, Block GP, Saltlake, Sector 5, Kolkata 700 091; Tel No.: 033-40541700; [www.narnolia.com](http://www.narnolia.com). Registered Office Address: Shivam Chambers, 1st Floor, 53, Syed Amir Ali Avenue, Kolkata 700 091. Compliance Officer: Manish Kr Agarwal, Email Id: [mkagarwal@narnolia.com](mailto:mkagarwal@narnolia.com), Contact No.:033-4054 1766.

Registration details Company & Group entities: MCL: SEBI Registration: INZ000166737 (BSE/NSE/MSE); CDSL: IN-DP-424-2007; NSDL: IN-DP-NSDL-245-2005; Research Analyst: INH300002407, Merchant Banking: (Registration No.: INM000010791), PMS: (Registration No.: INP000002304), AMFI: ARN 3087

SEBI Registration: BSE Broker INZ260010731; NSDL DP: IN-DP-NSDL-371-2014 G. Raj & Company Consultants Ltd (G RAJ), MCX/NCDEX Commodities Broker: INZ000051636 Microsec Commerce Limited, PMS: INP000005109Narnolia Velox Advisory Ltd., Investment Adviser: INA300005439 Eastwind Capital Advisors Pvt Ltd. (EASTWIND),IRDA License No.134 (Microsec Insurance Brokers Limited), AMFI: ARN 20558, PFRDA NPS POP: 35012016 Narnolia Securities Ltd. (NSL), RBI Registered NBFC:B.05.02568 Narnolia Capital Advisors Pvt. Ltd.