

30-May-18

## Market Roundup

Today Nifty opened in negative at **10579** & made a low of **10558** levels; from there it gave bounce back towards the high of **10649** levels & closed in negative at **10615** levels.

**Positive Sector in Nifty:** FIN SERVICE, PSU BANK, PVT BANK, , METAL.

**Negative Sector in Nifty:** FMCG, MEDIA, PHARMA, REALTY, AUTO, IT.

India VIX gain marginally by **1.47%** to 13.26

Maximum open interest in Call: 10800 levels (5217450)

Maximum open interest in Put: 10500 levels (6022650)

Highest change in OI for call: 11000 levels (**-933,675**)

Highest change in OI for Put: 10500 levels (**1,025,400**)

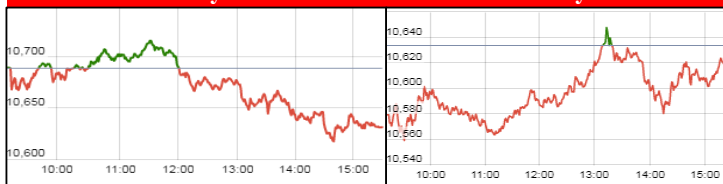
Nifty future open interest: (1,95,66,675)

Nifty future change in OI: (**6,06,075**)

## NIFTY Intraday Chart

29-May-18

30-May-18



## Market

### Todays Closing

Market	Value	Points	% Change
Sensex	34,906.11	-43.13	-0.12
Nifty	10,614.35	-18.95	-0.18
Nifty Bank	26,327.80	73.00	0.28

### Advance / Decline

Group	Nifty Bank	Nifty 50	Sensex
Advance	6	18	11
Decline	6	32	20
Unchanged	0	0	0

## Top Nifty - 50 Index Gainers

Symbol	LTP	% Change
M&M	894.5	2.79
BAJFINANCE	2,130.00	2.55
COALINDIA	288.75	2.27
YESBANK	343.9	1.73
BAJAJFINSV	5,973.00	1.45

## Top Nifty - 50 Index Losers

Symbol	LTP	% Change
HINDPETRO	306.3	-2.78
HINDALCO	237.7	-1.98
GRASIM	1,037.15	-1.95
TATAMOTORS	288.95	-1.93
ICICIBANK	285	-1.69

## Derivative Market

Derivative Volumes (INR in Crores)

Exchange	No. of Contracts	Turn Over cr
Index Futures	4,38,457	39,135.47
Stock Futures	17,53,303	1,15,678.80
Index Options	1,22,57,226	11,46,878.33
Stock Options	8,17,018	57,439.05
F&O Total	1,52,66,004	13,59,131.65

## Stock in Ban period

29-May-18

30-May-18

DHFL	JETAIRWAYS	DHFL	JETAIRWAYS
JISLJAEQS	Nil	Nil	Nil
Nil	Nil	JPASSOCIAT	JUSTDIAL
BALRAMCHIN	Nil	BALRAMCHIN	Nil
IDBI	Nil	IDBI	Nil
RCOM	Nil	Nil	Nil

## Nifty Most Active Call

Index Option	Price INR	No. of Contract in VOL	lacs OI
10800	0.75	204207	5217450
10700	4.7	622599	4083900
10600	34.3	784874	3054300
10900	0.45	95769	2191800
10650	12.5	321709	2069100

## Nifty Most Active Put

Index Option	Price INR	No. of Contract in VOL	lacs OI
10500	4.15	631707	6022650
10600	23	588093	3694050
10300	0.8	70887	3026625
10400	1.65	201176	2637150
10200	0.75	36397	2397075

## Technical Diary - Nifty



- Nifty opened in negative & made a low & made a high & closed in negative.
- It traded with negative bias.
- It closed 19 points below previous day close.
- It took Resistance & support at 10649 & 10588 respectively.

## Technical Diary - Bank Nifty



- Bank Nifty opened in negative & made a low & made a high & closed in positive.
- It traded with positive bias
- It closed 73 points above previous day close.
- It took Resistance & support at 26405 & 25980 respectively.

## Technical Diary- Sensex



- Sensex opened in negative & made a low & made a high & closed in negative.
- It traded with negative bias.
- It closed 44 points below previous day close.
- It took Resistance & support at 35017 & 34735 respectively

## Technical Diary- India VIX



- India VIX gain marginally by 1.47% to 13.2625
- It took Resistance & support at 13.85 & 12.18 respectively.



Narnolia Securities Ltd

201 | 2nd Floor | Marble Arch Building | 236B-AJC Bose Road | Kolkata-700 020.

Ph : 033-40501500

email: [narnolia@narnolia.com](mailto:narnolia@narnolia.com), website : [www.narnolia.com](http://www.narnolia.com)

#### Research Report Disclaimer & Disclosures

Disclaimer: This document has been prepared by Microsec Capital Limited (hereinafter referred to as MCL) to provide information about the Company (ies)/sector(s), if any, covered in the report and may be distributed by it and/or its associates.

This report does not constitute to be any investment, legal or taxation advice. This research report does not constitute an offer, invitation or inducement to invest in securities or other investments and MCL is not soliciting any action based upon it. This report should not be reproduced or redistributed to any other person in any form. This report does not constitute a personal recommendation or take into account the particular investment objectives, financial situations, or needs of individual clients. Before acting on any advice or recommendation in this report, investors should consider whether it is suitable for their particular circumstances and, if necessary, seek professional advice. Neither MCL, its subsidiaries/Associates, nor its directors, employees, agents, representatives shall be liable for any damages whether direct or indirect, incidental, special or consequential including lost revenue or lost profits that may arise from or in connection with the use of the information/research reports/opinions expressed herein.

While we would endeavour to update the information herein on reasonable basis, MCL and/or its associates are under no obligation to update the information. Also there may be regulatory, compliance, or other reasons that may prevent MCL and/or its associates from doing so. MCL/it's associates or employees shall not in any way be responsible and liable for any loss or damage that may arise to any person from any inadvertent error in the information contained in this report. MCL/it's associates or employees do not provide, at any time, any express or implied warranty of any kind, regarding any matter pertaining to this report, including without limitation the implied warranties of merchantability, fitness for a particular purpose, and non-infringement. The recipients of this report should rely on their own investigations.

MCL and its associates, their directors and employees and their relatives may; (a) from time to time, have a long or short position in, act as principal in, and buy or sell the securities or derivatives thereof of companies mentioned herein. (b) be engaged in any other transaction involving such securities and earn brokerage or other compensation or act as a market maker in the financial instruments of the company(ies) discussed herein or may have any other potential conflict of interests with respect to any recommendation and other related information and opinions.; however the same shall have no bearing whatsoever on the specific recommendations made by the analyst(s), as the recommendations made by the analyst(s) are completely independent of the views of the associates of MCL even though there might exist an inherent conflict of interest in some of the stocks mentioned in the research report.

MCL and/or its affiliates and/or employees may have interests/positions, financial or otherwise of over 1 % at the end of the month immediately preceding the date of publication of the research in the securities mentioned in this report.

The research professionals responsible for the preparation of this document may interact with trading desk personnel, sales personnel and other parties for the purpose of gathering, applying and interpreting information. Subject Company may have been a client of MCL or its associates during twelve months preceding the date of distribution of the research report. MCL or its associates may have investment banking and other business relationships with some companies covered by our Research Department. Any or all of the foregoing among other things, may give rise to real or potential conflicts of interest.

MCL and its associates may have managed or co-managed public offering of securities, may have received compensation for investment banking or merchant banking or brokerage services, may have received any compensation for products or services other than investment banking or merchant banking or brokerage services from the subject company in the past 12 months. MCL and its associates have not received any compensation or other benefits from the subject company or third party in connection with the research report.

Microsec Capital Ltd. ("MCL") is SEBI registered Research Analyst under SEBI (Research Analyst) Regulation 2014 having registration Number INH300002407. Besides, MCL is SEBI registered stock broker, Depository Participant, Merchant Banker, Portfolio Management Services and AMFI registered Mutual Fund distributor.

The Company issues research reports to clients/prospective clients/others without any additional fees/charge.

No material disciplinary action impacting equity research analysis activities has been taken by any statutory/ Regulatory authority against MCL.

#### Analyst Certification

The matter related to the report has been taken from sources believed reliable and the views expressed about the subject or issues in this report accurately reflect the personal views of the analyst/analysts. MCL does not compensate partly or in full, directly or indirectly, related to specific recommendations or views expressed by the research analysts. Disclosure of interest statement of research analyst is as below:-

1. Analyst's ownership of the stocks mentioned NIL
2. Served as an officer, director or employee in subject Company NO