

Trading Calls

RUPA Long/Buy 2nd Nov 2017

After giving sharp correction it had taken support near previous bottom with good volume now stock was consolidating from last few couple of days and today it has given brekout with good volume. Hence we advise long near 433 for the price target of 482 and 500 with 384 as SL.

AMARAJABAT Long/Buy 1st Nov 2017

After spending some time at lower levels, today it has broken the 50 & 100 SMA levels with good volumes. Hence we advise buy near 707 for the price target of 748 and 781 with 674 as SL.

EQUITAS Long/Buy 31th Oct 2017

Equitas Holdings Ltd has made a double bottom near Rs 143 and thereafter gave god pullback since last couple of days. Therefore we advise traders to initiate long position in the stock near Rs 147.35 with a stop loss of Rs 137. The upside targets are Rs 158 and Rs 172.

SRF Long/Buy 30th Oct 2017

After spending some time in consolidation today it has broken the minor hurdle with good volume. Therefore we advise our client to buy near 1700 for the Price target of 1780 and 1820 with 1620 as SL.

CEATLTD Long/Buy 27th Oct 2017

Last few cou... support near... upper chan... target of 1760 a... this pattern.

CEAT Tgt2 Achived

... chanel and yesterday it has taken... expect that it should move toward... ment to buy near 1694 for the price... 30 as SL. Stochastics is also supporting

Market	Value	% Change
SGX Nifty	10495.00	0.15%

Nifty Key Levels

Support	S1 : 10360	S2: 10123
Resistance	R1 : 10530	R2: 10675

Market Outlook

After making a low of 9687.55 on 28th September, Nifty has given a sharp bullish rally over 8% in a time span of just one month. It has also given a bullish breakout (U-pattern) above 10180 on 16th October. The pattern target of the index is 10675. Currently, the market breadth is stable and midcap and small-cap indices also responding in the same direction with the benchmark index. On downside in near term 10,200 should act as strong support for Nifty

Institutional Turnover			
FII	Buy(Cr.)	Sale(Cr.)	Net(Cr.)
06-Nov-17	5164	4588	576
Nov-17	21398	28442	(7044)
DII	Buy(Cr.)	Sale(Cr.)	Net(Cr.)
06-Nov-17	3987	4251	(264)
Nov-17	16427	17782	(1355)

Sectoral Performance (%)				
	1 Day	1 Week	1Month	1 Year
Auto Components	1.2	(2.9)	4.4	25.1
Automobiles	(0.1)	(3.4)	3.0	11.4
Chemicals	(0.2)	(5.2)	0.6	13.4
Construction Materials	0.3	(6.0)	(0.3)	9.4
Construction & Engg	0.2	0.1	5.2	32.5
Div. Financial Services	0.9	2.0	12.2	58.7
Electrical Equipment	1.2	(3.4)	4.3	13.0
Energy	0.4	(2.8)	1.4	31.6
Financials	0.3	(4.2)	(0.3)	22.8
Health Care	0.4	(0.6)	2.9	(15.9)
Household Durables	0.2	(4.5)	1.9	22.27
Household Pers. Products	1.6	1.8	3.0	12.9
Information Technology	(0.38)	(1.0)	0.3	4.1
Metals/Mining/Minerals	2.1	(3.5)	4.3	23.2
Telecom	(1.2)	(3.9)	(7.5)	10.6
Utilities	0.3	(2.8)	0.7	17.4

Participant wise Open Interest In Equities Derivative (no. of contracts)

Long Position				
	DII	FII	Pro	Other
Future Index	16136	200813	31334	176074
Future Stock	39273	467999	157645	1128310
Option Index Call	119527	311159	182862	327969
Option Index Put	63693	341693	216902	772950
Option Stock Call	49	26566	50288	237730
Option Stock Put	24	23485	46684	109809

Short Position				
	DII	FII	Pro	Other
Future Index	22000	126175	41221	234961
Future Stock	829587	496193	91145	376302
Option Index Call	0	157954	215095	568468
Option Index Put	0	207309	305882	882046
Option Stock Call	54	28572	96878	189129
Option Stock Put	0	24127	48012	107863

High ES & High PS Stock Maintaining Strength

BSE Code	NSE CODE	1 Month Return %
532149	BANKINDIA	48.9
500670	GNFC	46.6
532814	INDIANB	41.3
530001	GUJALKALI	38.1
532848	DELTACORP	37.4
532942	KNRCON	31.9
532617	JETAIRWAYS	31.4
532401	VIJAYABANK	31.3
532254	POLARIS	30.9
500114	TITAN	30.6

High ES & Low PS Stock Showing Strength

BSE Code	NSE CODE	1 Month Return %
512161	8KMILES	92.7
512131	SIGNET	75.2
532371	TTML	71.1
514034	JBFIN	49.5
509820	PAPERPROD	33.9
532612	INDOCO	25.2
532134	BANKBARODA	25.1
511218	SRTRANSFIN	24.7
506690	UNICHEMLAB	23.4
532179	CORPBANK	22.4

Low ES & Low PS Stock Maintaining Weakness

BSE Code	NSE CODE	1 Month Return %
530943	SABTN	(63.76)
532121	DENABANK	(9.84)
532712	RCOM	(7.58)
500271	MFSL	(4.24)
531795	ATULAUTO	(4.17)
532843	FORTIS	(1.78)
532683	AIAENG	(1.50)
532755	TECHM	(0.82)
526612	BLUEDART	0.31
532939	RPOWER	0.37

Low ES & High PS Stock Showing Weakness

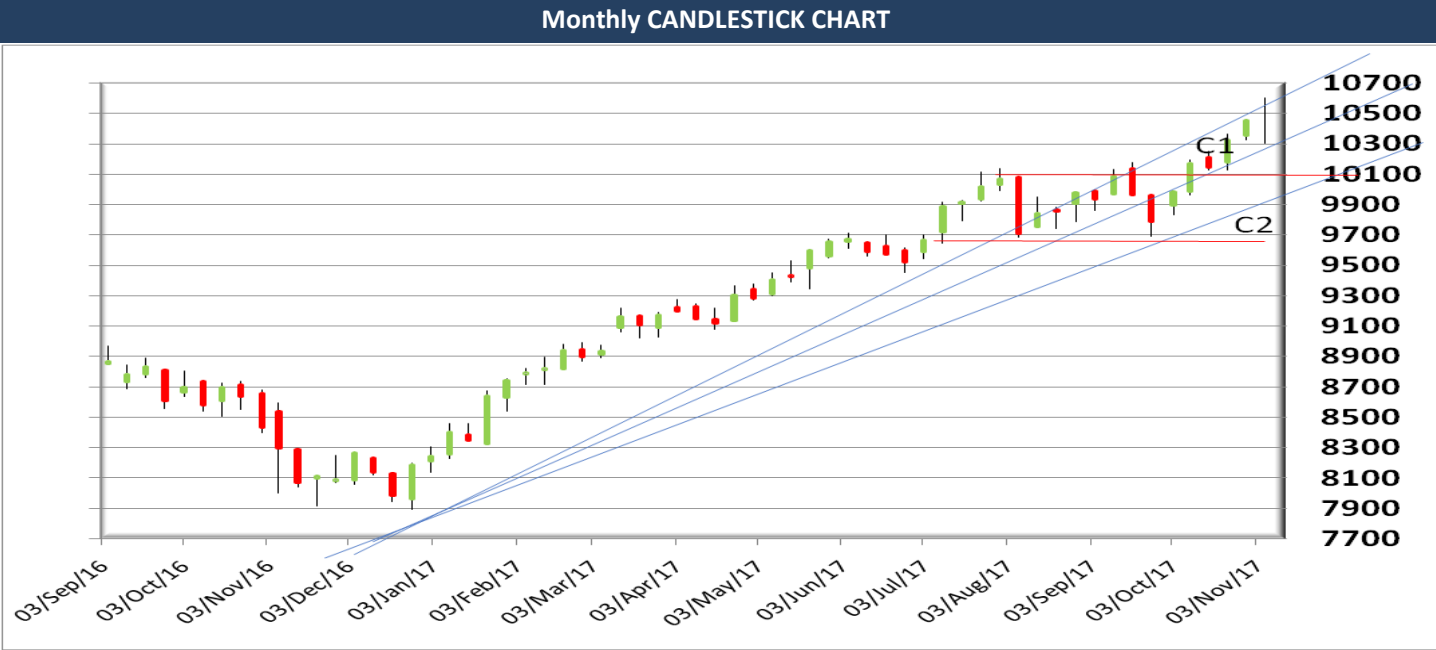
BSE Code	NSE CODE	1 Month Return %
520051	JAMNAAUTO	(75.90)
526586	WIMPLAST	(7.54)
500266	MAHSCOOTER	(3.43)
512070	UPL	(3.33)
500405	SUPPETRO	(3.12)
500104	HINDPETRO	(2.14)
500875	ITC	(0.95)
500163	GODFRYPHLP	(0.13)
524200	VINATIORGA	0.21
530965	IOC	0.38

* ES- Earning Score is average of EM (Earning Momentum defined as relative performance in terms of operating profit growth) and EQ (Earning Quality defined as relative balance sheet strength in terms of debt and working capital)

* PS- Price Score is of a company is relative price performance in multiple time-frame

Analysis shown here is only for companies with market cap more than Rs 1,000 Cr.

During last week Nifty remained within Channel C1. The range for this channel for next week is 10300 to 10600. As per this range, for strong uptrend to continue, Nifty should remain above 10300 during the week. On correction if 10300 holds it is an opportunity to go long. On the upside in case Nifty goes to 10600 profits should be booked aggressively since at this level medium term target as per measured range is achieved and Nifty is also in oversold territory on daily charts. So, strategy is clear. Buy on dips till 10300 holds and book profits at around 10600 levels. On the down side things will become nasty in case 10300 is broken. In such a scenario the support after 10300 comes at 10100. In case 10300 does not hold wait for 10100 before going long.



RESISTANCE AND SUPPORT LEVELS BASED ON WEEKLY AND DAILY ANALYSIS

RESISTANCE/SUPPORT	NIFTY LEVEL	JUSTIFICATION
Resistance 1	10461	ALL TIME HIGH
Resistance 2	10600	TOP OF WEEKLY CHANNEL C1
Support 1	10367	GAP UP 31 OCT/1 NOV
Support 2	10300	BOTTOM WEEKLY CHANNEL C1
Support 3	10237	GAP UP 24/25 OCT

Rating : Long / BUY

Initiation Date 2-Nov-17

BSE Code	533552	Buy Price	433
NSE Symbol	RUPA	Stop Loss	384
52wk Range H/L	590/244	Target Price1	482
Mkt Capital (Rs Cr)	3455	Target Price2	500
Av.Cash Volume	863	Upside in Tgt1	11.32
Open Interest	-	Upside in Tgt2	15.47



After giving sharp correction it had taken support near previous bottom with good volume now stock was consolidating from last few couple of days and today it has given brekout with good volume. Hence we advise long near 433 for the price target of 482 and 500 with 384 as SL.

Rating : Long / BUY

Initiation Date 1-Nov-17

BSE Code	500008
NSE Symbol	AMARAJABAT
52wk Range H/L	1048.40/675
Mkt Capital (Rs Cr)	12073
Av.Cash Volume	5,795
Open Interest	-

Buy Price	707
Stop Loss	674
Target Price1	748
Target Price2	781
Upside in Tgt1	5.80
Upside in Tgt2	10.47



After spending some time at lower levels, today it has broken the 50 & 100 SMA levels with good volumes. Hence we advise buy near 707 for the price target of 748 and 781 with 674 as SL.

Rating : Long / BUY

Initiation Date 31-Oct-17

BSE Code	539844
NSE Symbol	EQUITAS
52wk Range H/L	138.35/188.20
Mkt Capital (Rs Cr)	4995
Av.Cash Volume(,000)	1475
Open Interest	NA

Buy Price	147.35
Stop Loss	137
Target Price1	158
Target Price2	172
Upside in Tgt1	7%
Upside in Tgt2	17%

Technical Chart



Equitas Holdings Ltd has made a double bottom near Rs 143 and thereafter gave god pullback since last couple of days.

Therefore we advise traders to initiate long position in the stock near Rs 147.35 with a stop loss of Rs 137. The upside targets are Rs 158 and Rs 172.

The momentum indicators like RSI and Stochastic are in deep oversold zone. Therefore some pullback rally is likely to emerge at the current level.

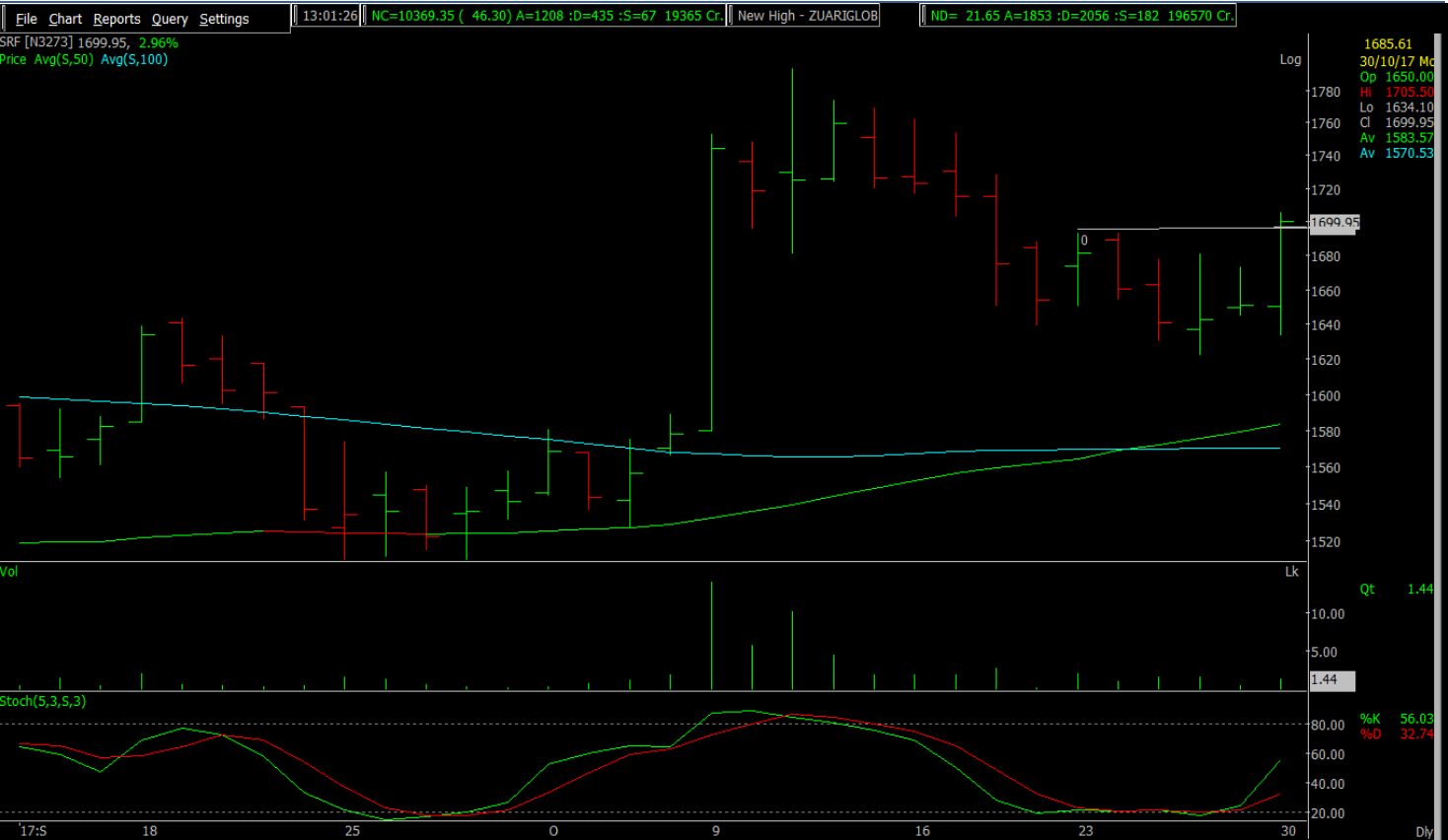
7th Nov 2017

Narnolia Securities Ltd | Retail Technical Research

Rating : Long / BUY

Initiation Date 30-Oct-17

BSE Code	503806	Buy Price	1700
NSE Symbol	SRF	Stop Loss	1620
52wk Range H/L	1860/1352	Target Price1	1780
Mkt Capital (Rs Cr)	9764	Target Price2	1820
Av.Cash Volume	4,686	Upside in Tgt1	4.71
Open Interest	-	Upside in Tgt2	7.06



After spending some time in consolidation today it has broken the minor hurdle with good volume. Therefore we advise our client to buy near 1700 for the Price target of 1780 and 1820 with 1620 as SL.

Rating : Long / BUY

Initiation Date 27-Oct-17

BSE Code	500878	Buy Price	1694
NSE Symbol	CEATLTD	Stop Loss	1630
52wk Range H/L	1948/1060.30	Target Price1	1760
Mkt Capital (Rs Cr)	6840	Target Price2	1800
Av.Cash Volume	3,351	Upside in Tgt1	3.90
Open Interest	-	Upside in Tgt2	6.26



Last few couple of week its trading in chanel and yesterday it has taken support near lower chanel. We further expect that it should move toward upper chanel. Hence we advise our client to buy near 1694 for the price target of 1760 and 1800 with 1630 as SL. Stochastics is also supporting this pattern.



Narnolia Securities Ltd

201 | 2nd Floor | Marble Arch Building | 236B-AJC Bose
Road | Kolkata-700 020 , Ph : 033-40501500

email: narnolia@narnolia.com,
website : www.narnolia.com

Risk Disclosure & Disclaimer: This report/message is for the personal information of the authorized recipient and does not construe to be any investment, legal or taxation advice to you. Narnolia Securities Ltd. (Hereinafter referred as NSL) is not soliciting any action based upon it. This report/message is not for public distribution and has been furnished to you solely for your information and should not be reproduced or redistributed to any other person in any form. The report/message is based upon publicly available information, findings of our research wing "East wind" & information that we consider reliable, but we do not represent that it is accurate or complete and we do not provide any express or implied warranty of any kind, and also these are subject to change without notice. The recipients of this report should rely on their own investigations, should use their own judgment for taking any investment decisions keeping in mind that past performance is not necessarily a guide to future performance & that the value of any investment or income are subject to market and other risks. Further it will be safe to assume that NSL and /or its Group or associate Companies, their Directors, affiliates and/or employees may have interests/ positions, financial or otherwise, individually or otherwise in the recommended/mentioned securities/mutual funds/ model funds and other investment products which may be added or disposed including & other mentioned in this report/message.