

## Trading Calls

**DABUR** Long/Buy 15th November 2018

On daily as well as weekly scale DABUR is showing sign of strength, after giving complex correction from top of 490.65. It has formed an impulse in short time but spent long time in correction. On weekly scale it is forming higher high higher low formation with resonable volume. At this point we can say that swing has turned up from down. At this stage momentum oscillator Stochastics is also supporting this pattern. Hence we advise our client to accumulate this stocks in given range of 385-380 and on decline towards 372-368 for the price targets of 404 and 419 with SL of below 352 on closing basis.

**CADILAHC** Long/Buy 13th November 2018

The axis of CADILAHC is 330 and since 2feb 2017 it has not broken this level and take multile support at this point. Above mentioned chart you can see that it has taken multiple support around 330 and delivered strong upmove there after. Last few days back again it has taken support at 332 with good volume. It seems that it should move up. After making intermediate top of 432.50 on 10/09/2018, stock is falling corrective with low volume which is technically good. Momentum oscillator Stochastics is also supporting this pattern. Hence we advise our client to buy CADILAHC in the range of 358-354 and on decline towards 342-338 with SL of 315 on closing basis for the price targets of 384 and 401.

**WOCKPHARMA** Long/Buy 13th November 2018

Wockhardt Limited has given a sharp pullback rally from its recent low of 437.45 made on 26th October 2018. Currently the stock has given bullish breakout of a 'Reverse Head and Shoulder' pattern neck line above Rs 524 with decent volumes. Therefore some fresh up move is likely to take the stock higher up to 598 in the short term.

**GOGREJAGRO** Long/Buy 3rd October 2018

Since 23rd Apr 2018 stocks is in complex correction. It seems it has formed wave B on 1st Oct 2018 at 492.55 and further we expect that wave C may help it to move on upper side. During entire fall of wave B, volume was low which is technically good. Momentum oscillator Stochastics is also supporting this pattern. Hence we recommend buy in the range of 544-535 and on decline towards 520-515 for the price targets of 585 and 601 with 490 as SL.

**NMDC** Long/Buy 26th September 2018

Since 19th July 2018 stock is moving in impulse. Last few couple of days it was spending time in wave 4. As wave 2 was vertical fall so we expect that wave 4 should not damage price more. We are trying to in cash the moment of wave 5 so we advise our client to buy in the range of 114.50-112 and on dip towards 109-105 for the price target of 126 and 133 with 95.90 as SL on closing basis.

**POWERGRID** Long/Buy 19th June 2018

"Daily chart of Power grid reveals that demand is increasing and supply is diminishing . Sripe is about to complete Ascending triangle pattern on hourly chart which is displaying trend reversal at current juncture. Moreover, Scrip took support from 78.6% retracement of the rally from 189 to 226 mark and formed Morning Star which indicate positive rhythm. Apart from this, Declining MACD Histogram signals optimism, suggest upside move in the counter in coming sessions." STDC- BUY POWERGRID AT 199-195 OR DIP TOWARDS 188, SL – 173 (CLOSING BASIS), T1- 225, 235

Market	Value	% Change
SGX Nifty	10667.00	0.43%

### Nifty Key Levels

Support	S1: 10550	S2 : 10600
Resistance	R1 : 10650	R2 : 10710

### Market Outlook

Nifty has been moving in a tight range of 10440 and 10650 since last couple of weeks. So the level of 10650 becomes a psychological resistance of the index. On the other hand 10710 is the higher point of the previous pullback. Therefore 10650-10710 would act as a stiff resistance zone and a breach of this zone is likely to take the index higher to 10850.

### FII DERIVATIVES STATISTICS FOR 15-Nov-2018

	Net (Amt. in crs)
INDEX FUTURES	419
INDEX OPTIONS	2,238
STOCK FUTURES	-568
STOCK OPTIONS	213

### Institutional Turnover

FII	Buy(cr.)	Sell(cr.)	Net(cr.)
15-Nov-18	6,078	4,035	2,043
Nov-18	49,558	46,591	2,967
DII	Buy(cr.)	Sell(cr.)	Net(cr.)
15-Nov-18	3,285	3,450	-165
Nov-18	29,338	30,983	-1,645

### Sectoral Performance (%)

	1 Day	1 Week	1 Month	1 Year
Auto Components	(0.36)	(2.89)	(0.83)	(10.67)
Automobiles	0.93	0.11	1.89	(17.68)
Chemicals	(0.22)	2.90	5.55	1.32
Construction & Engineering	1.48	2.67	9.75	(6.02)
Construction Materials	1.60	2.62	3.36	(19.90)
Diversified Financial Services	0.85	1.58	4.81	(3.46)
Electrical Equipment	1.02	(0.05)	3.41	(5.74)
Energy	(0.06)	0.29	(0.47)	(1.10)
Financials	0.85	1.32	3.83	(3.05)
Health Care	0.08	(2.03)	(3.40)	4.62
Household Durables	0.25	(1.15)	1.67	(10.52)
Household & Personal Products	0.13	3.34	6.45	20.99
Information Technology	(0.36)	(2.97)	(4.15)	26.74
Metals/Mining/Minerals	0.35	(1.29)	(2.48)	(8.89)
Telecom	(0.87)	(2.10)	1.75	(37.39)
Utilities	(0.37)	0.12	2.74	(9.50)

## Participant wise Open Interest In Equities Derivative (no. of contracts)

Long Position				
	DII	FII	Pro	Other
Future Index	72042	166077	26462	160413
Future Stock	36485	893718	156943	805388
Option Index Call	33658	301804	154825	403065
Option Index Put	129563	418418	215422	582594
Option Stock Call	0	47587	67419	300849
Option Stock Put	0	44889	60552	167249

Short Position				
	DII	FII	Pro	Other
Future Index	28570	261547	18863	116014
Future Stock	1022850	517704	108839	243141
Option Index Call	0	92304	244607	556441
Option Index Put	0	197758	285587	862652
Option Stock Call	0	33508	131737	250610
Option Stock Put	0	36499	84639	151552

## High ES & High PS Stock Maintaining Strength

BSE Code	NSE CODE	1 Month Return %
532497	RADICO	31.9
524200	VINATORGA	28.6
512070	UPL	21.8
500163	GODFRYPHLP	19.3
532488	DIVISLAB	19.3
532539	MINDAIND	19.2
500003	AEGISCHEM	18.8
532374	STRTECH	16.2
532174	ICICIBANK	15.9
503806	SRF	15.9

## High ES & Low PS Stock Showing Strength

BSE Code	NSE CODE	1 Month Return %
512529	SEQUENT	41.5
533150	GODREJPROP	26.3
533552	RUPA	21.2
532218	SOUTHBANK	16.3
501301	TATAINVEST	14.7
533655	TRITURBINE	14.5
506690	UNICHEMLAB	13.7
500690	GSFC	13.5
511196	CANFINHOME	13.3
500049	BEL	12.9

## Low ES & Low PS Stock Maintaining Weakness

BSE Code	NSE CODE	1 Month Return %
511431	VAKRANSOFT	(37.94)
532839	DISHTV	(31.35)
531737	GREENCREST	(27.11)
500405	SUPPETRO	(17.27)
511072	DHFL	(16.75)
531548	SOMANYCERA	(14.31)
522275	ALSTOMT&D	(12.78)
533217	HMVL	(8.33)
531508	EVEREADY	(8.24)
500645	DEEPAKFERT	(7.53)

## Low ES & High PS Stock Showing Weakness

BSE Code	NSE CODE	1 Month Return %
500355	RALLIS	(12.06)
532612	INDOCO	(11.86)
531500	RAJESHEXPO	(8.64)
515030	ASAHIINDIA	(7.61)
509496	ITDCEM	(4.96)
500620	GESHIP	(4.88)
517380	IGARASHI	(4.29)
532210	CUB	(3.98)
509820	PAPERPROD	(3.41)
532978	BAJAJFINSV	(3.35)

\* ES- Earning Score is average of EM (Earning Momentum defined as relative performance in terms of operating profit growth) and EQ (Earning Quality defined as relative balance sheet strength in terms of debt and working capital)

\* PS- Price Score is of a company is relative price performance in multiple time-frame

# Analysis shown here is only for companies with market cap more than Rs 1,000 Cr.

## STDC / R25 Open Calls for 16-Nov-2018 (6)

STDC (6)									
No	Date	Type	Buy/Sell	Stock	Entry1	Entry2	SL	Tgt 1	Tgt 2
1	15-Nov-18	STDC	BUY	DABUR	382	370	352	404	419
2	13-Nov-18	STDC	BUY	CADILAHC	356	341	315	384	401
3	13-Nov-18	STDC	BUY	WOCKPHARMA	528		493	564	598
4	01-Oct-18	STDC	BUY	GODREJAGRO	539.5	517.5	491	585	601
5	26-Sep-18	STDC	BUY	NMDC	113.25	106.5	95.9	126	133
6	19-Jun-18	STDC	BUY	POWERGRID	197	188	173	225	235

## VIEW

Diwali spark fails to light up D-street as major Indices were facing multiple resistance at higher levels but this festive spirit and short covering boosted the sentiment of mid-caps which ended on positive note. Major indices traded in range bound and closed in red due to weak global cues as FED hinted for rate hike in next month. As domestic market will now heed on state elections which first round of voting is expected on monday. Outcome of these election are crucial as they will become an eyeball of the trend expected from the general election in 2019. With most short term events behind us, such as the earning season and CPI data which will be announced on monday, decline in CPI can boost the market sentiment. Any further fall in oil prices and appreciation in rupee can take the indices to the next levels.

**NIFTY-**

- a) Lack of follow thru buying and multiple resistance of higher levels resisted Nifty to close below 10600 levels.
- b) Dynamic of the market remain pretty much same as the earlier week until it sustains above key resistance of 10710 level which is unfilled bearish gap of previous sessions.
- c) If it give decisive close above 10710 then the probability of upside till 10880 levels certainly look open.
- d) Support lies at 10400 followed by 10235 levels.

## CHART ANALYSIS



## NIFTY LEVEL

## JUSTIFICATION

Resistance 2	10750	Previous swing high
Resistance 1	10710	Previous swing high
Close	10585	
Support 1	10400	Low of Bullish belt hold
Support 2	10235	Previous swing low

## Banknifty Weekly

12-Nov-18

## VIEW

Bank Nifty has consolidated in the narrow band of 25534 and 25861 throughout last week and closed the week with a net gain of 0.3% over its previous week's close. All the major banks also remain subdued during the week.

**OBSERVATIONS:**

- 1) A Hanging man pattern was formed on the daily candlestick chart of Bank Nifty. It is often interpreted as a sign that the bulls are beginning to lose their control on the asset price.
  - 2) The stochastic have reached at the overbought zone. It is the indication of consolidation or downward price revision in extreme short term.
  - 3) The Bank Nifty is consolidating near 38.2% retracement level (25825) of its last fall (from 28388 to 24240). 38.2%-50% retracement level i.e, 25825-26315 zone would act as short term stiff resistance areas of the index.
- According to the above observations it can be concluded that Bank Nifty is likely to consolidate in the short term. However a move above 26315 would indicate the reversal of recent downtrend. Therefore we advise to book some short term profits in the index at the current level. However the fresh long position can be initiated only above 26315.

## CHART ANALYSIS



## SUPPORT &amp; RESISTANCE LEVELS

RESISTANCE/SUPPORT	BANKNIFTY LEVEL
Resistance 2	26315
Resistance 1	26061
Close	25771
Support 1	25300
Support 2	24910

## VIEW

The FOMC acknowledged the strength in the economy and suggested further gradual rate hikes resulting in USD strength across the board. The december rate hike is almost certain now. The dollar weakened following the US mid-term election results, which showed Democrats wresting control of the House of representatives from the ruling Republican party. Rupees rise was supported by dollar selling from exporters & banks and the greenback's weakness against some currencies overseas. Rupee could likely consolidate on account of opposing factors i.e. broad USD strength and lower crude prices.

## TECHNICAL FACTORS-

- a) In line with our view, "The sequence of lower highs and lower lows are still intact".
- b) On a weekly chart pair has retraced after testing its upper channel of Bollinger band which imply trend reversal
- c) On a daily chart, pair gave Double top breakdown attributing the fact of trend reversal
- d) In addition, RSI and MACD are showing bearish crossover which further reinforce negative sentiment for this pair in near term
- e) A sustainable close below 72.40 levels will push pair further lower till 71.50 and 70.25 mark
- d) Now resistance slipped lower at 73.20 followed by 74.15 mark

## Chart

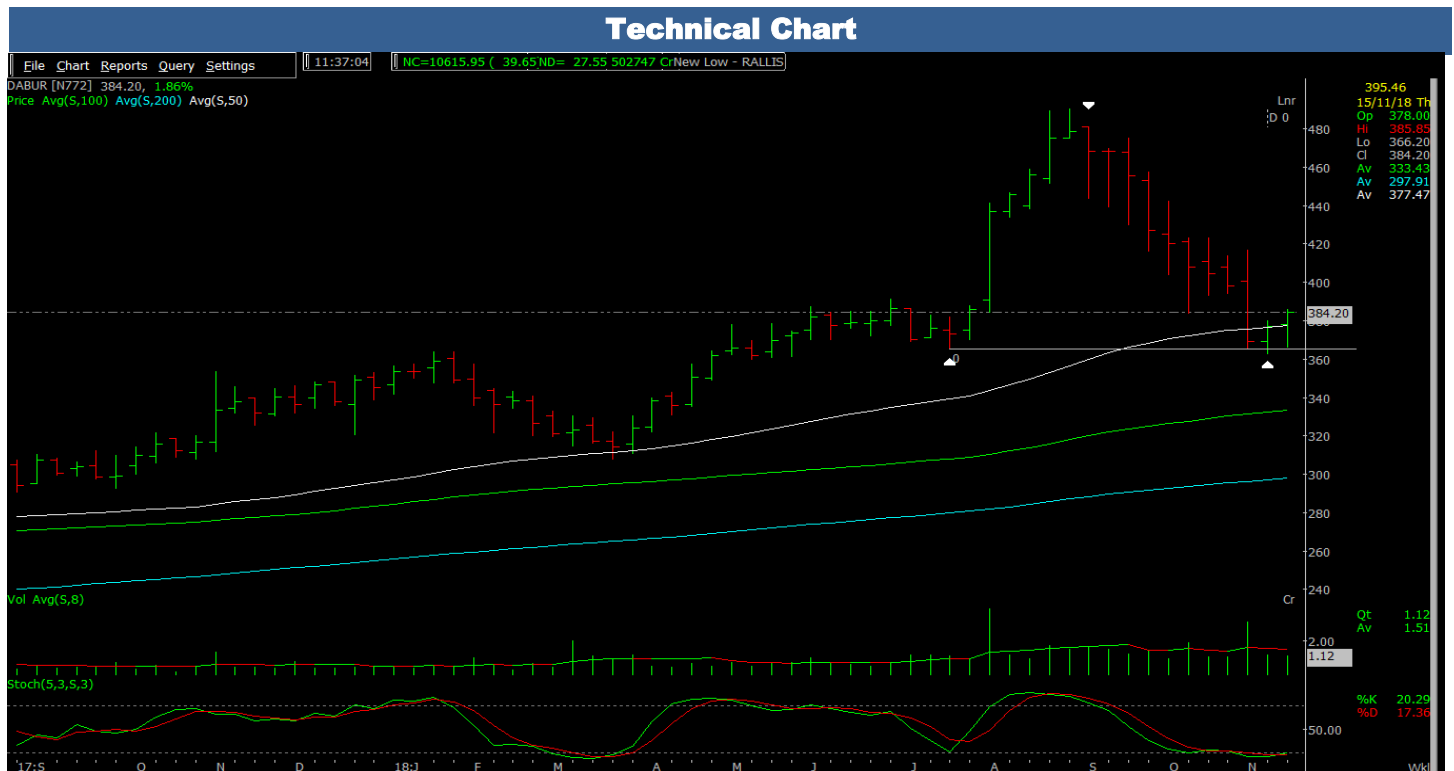


## STDC : Long / BUY

15-Nov-18

BSE Code	500096
NSE Symbol	DABUR
52wk Range H/L	490.70/312.45
Mkt Capital (Rs Cr)	67,886.00
Av.Cash Volume(,000)	21723
Open Interest	

Buy Price	376.25
Stop Loss	352
Target Price1	404
Target Price2	419
Upside in Tgt1	7%
Upside in Tgt2	11%



**STDC- BUY DABUR @ 385-380 AND ON DIP TOWARDS 372-368 SL- 352 (CLOSING BASIS) TGT-404, 419**

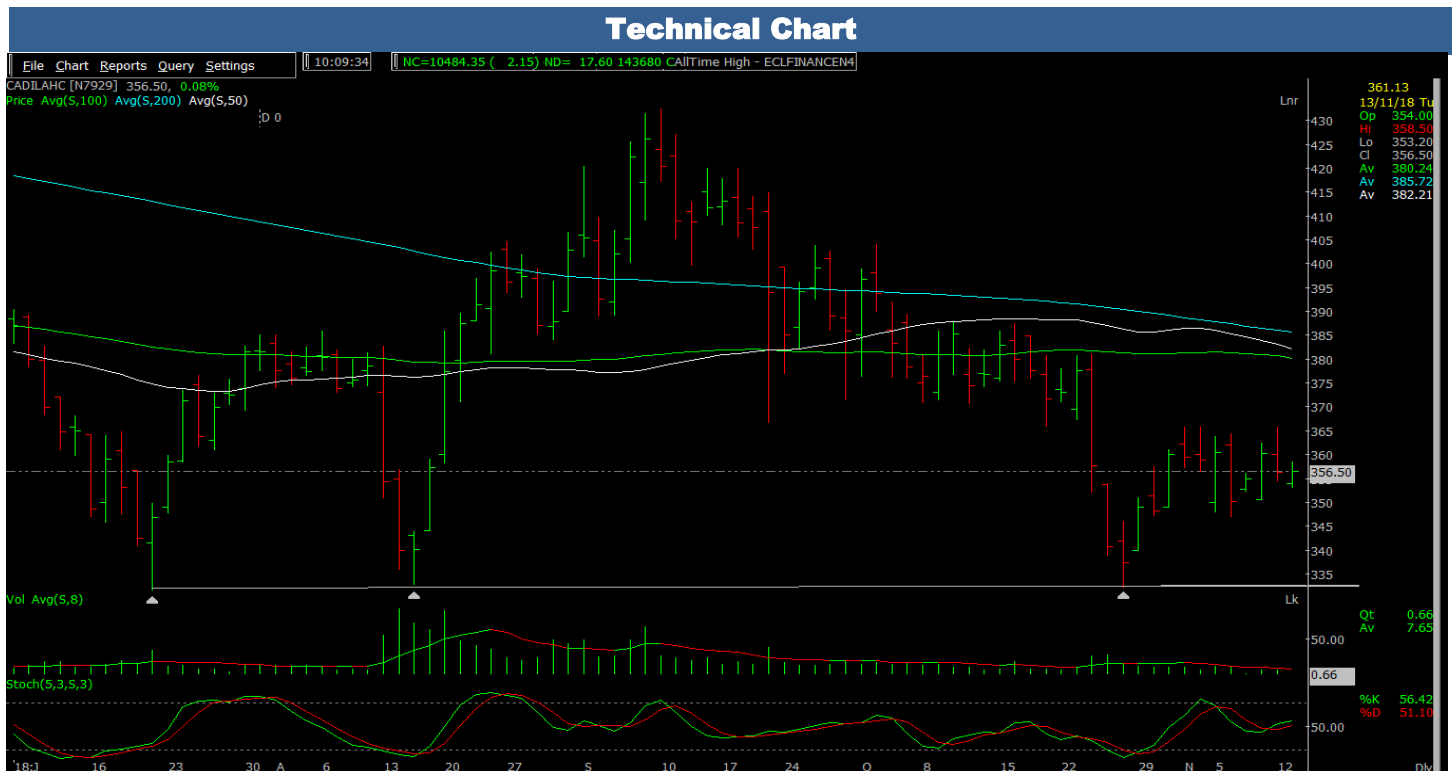
On daily as well as weekly scale DABUR is showing sign of strength, after giving complex correction from top of 490.65. It has formed an impulse in short time but spent long time in correction. On weekly scale it is forming higher high higher low formation with resonable volume. At this point we can say that swing has turned up from down. At this stage momentum oscillator Stochastics is also supporting this pattern. Hence we advise our client to accumulate this stocks in given range of 385-380 and on decline towards 372-368 for the price targets of 404 and 419 with SL of below 352 on closing basis.

## STDC : Long / BUY

13-Nov-18

BSE Code	532321
NSE Symbol	CADILAHC
52wk Range H/L	468.90/330.65
Mkt Capital (Rs Cr)	36,399.00
Av.Cash Volume(,000)	9099
Open Interest	

Buy Price	349
Stop Loss	315
Target Price1	384
Target Price2	401
Upside in Tgt1	10%
Upside in Tgt2	15%



### STDC- BUY CADILAHC @ 358-354 AND ON DIP TOWARDS 342-338 SL- 315 (CLOSING BASIS) TGT-384, 401

The axis of CADILAHC is 330 and since 2feb 2017 it has not broken this level and take multiple support at this point. Above mentioned chart you can see that it has taken multiple support around 330 and delivered strong upmove there after. Last few days back again it has taken support at 332 with good volume. It seems that it should move up. After making intermediate top of 432.50 on 10/09/2018, stock is falling corrective with low volume which is technically good. Momentum oscillator Stochastics is also supporting this pattern. Hence we advise our client to buy CADILAHC in the range of 358-354 and on decline towards 342-338 with SL of 315 on closing basis for the price targets of 384 and 401.



## STDC : Long / BUY

13-Nov-18

BSE Code	532300
NSE Symbol	WOCKPHARMA
52wk Range H/L	1012/473.45
Mkt Capital (Rs Cr)	5,842.40
Av.Cash Volume(,000)	1296
Open Interest	4567500

Buy Price	528
Stop Loss	493
Target Price1	564
Target Price2	598
Upside in Tgt1	7%
Upside in Tgt2	13%

### Technical Chart



STDC BUY WOCKPHARM @ 528 SL-493 (CLOSING BASIS) TGT-564,598

Wockhardt Limited has given a sharp pullback rally from its recent low of 437.45 made on 26th October 2018. Currently the stock has given bullish breakout of a 'Reverse Head and Shoulder' pattern neck line above Rs 524 with decent volumes. Therefore some fresh up move is likely to take the stock higher up to 598 in the short term.

After almost decade, Nickel market has finally turned around and now sits on a structural deficit market and may have entered the prolonged period of under supply. Global nickel market is expected to end the year showing a deficit of 120,000 tonnes in 2018 and 65,000 tonnes in 2019.

Global nickel mine production growth rate is set to slow in 2018. The production increase from Indonesia and New Caledonia is partly offset due to fall in Philippines nickel ore output on account of suspension of mines on environmental grounds. Global refined nickel production is expected to reach 2.21 million tonnes in 2018. Nickel refined production is expected to increase due to higher availability of nickel ore from Indonesia, helping the Chinese NPI producers to increase their nickel pig iron production.

Global nickel demand is expected to increase by more than 9 percent this year at 2.33 million tonnes. At the start of the year, nickel demand was forecast to rise by just 5 percent. But demand from the two drivers – stainless steel and battery increased in turn supported nickel prices in 2018.

#### **Continuous Rise in Stainless Steel Production**

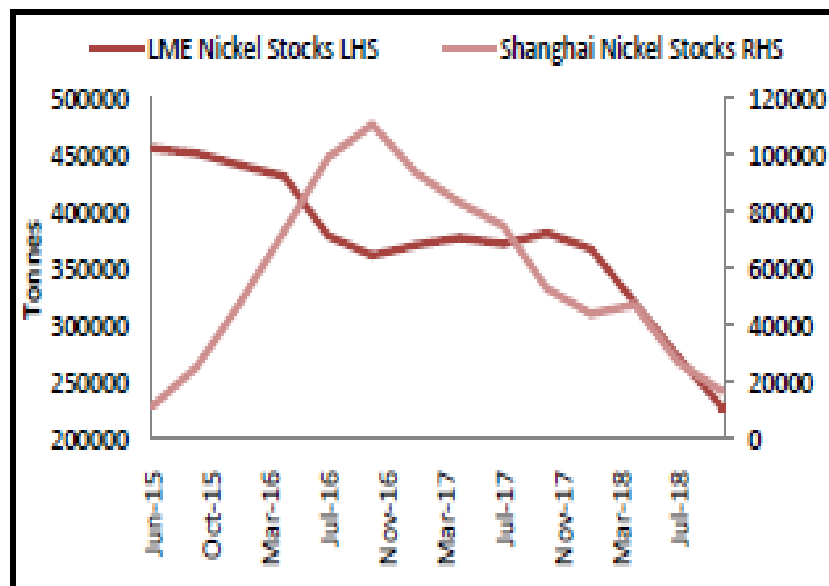
Around 65% of the nickel demand comes from this sector. World Crude steel production is increasing at a rate of 5.44% at 1.19 million tonnes during the Jan-Aug period of 2018. China, the world's largest producer, increased its steel capacity by 9 percent in the first 8 months of the year. Continuous growth in stainless steel production increases nickel usage and would create a supply shortage in the global nickel market.

#### **Battery demand**

Battery demand is growing at a fast pace however the base is still very low. Currently, it contributes to just 3-5% of nickel demand. Battery demand from electric vehicles will be growing at a rate of 24% from the 2017-2025. Going with the number, there are expectations of 350,000-400,000 tonnes of new demand coming from this sector by 2025. Electric vehicles sales are accelerating. Global sales of electric vehicles reached the 400,000 barrier in the second quarter, rising 77 percent from a year earlier, according to a report from Bloomberg NEF. The latest forecast shows the sales of electric vehicles is forecasted to increase from a record 1.1 million worldwide in 2017, to 11 million in 2025 and then surging to 30 million in 2030.

It would take several years to fulfill this high demand as the Electric Vehicle market needs Class 1 nickel mined from nickel sulfide ores. There are only a handful of projects at this stage and it would take 6-7 years to bring to the market. Nor Nickel, one of the largest nickel producer, says the current nickel prices are not enough for more investment in nickel mine and production. For it to be attractive, nickel prices would have to be at least \$18,000 per tonnes for the next 18-24 month to bring in more nickel sulfide i.e. Class 1 Nickel for battery sector.

## Inventory



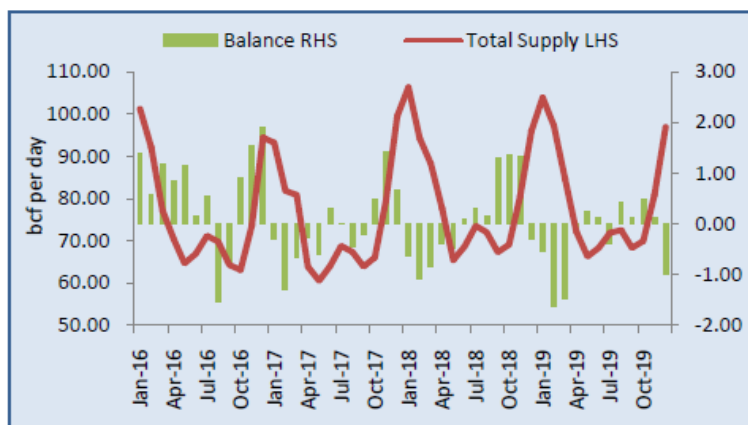
Source: Narnolia Research, Bloomberg

Tightness in an inventory has been one of the reason granting support to the nickel prices. The inventory in both the exchanges – LME and Shanghai has fallen drastically this year. LME Nickel inventories at the London exchanges fell to 228,000 tonnes in September 2018 down from 450,000 tonnes, down by almost 50% since June 2015. Shanghai stocks have been declining since the start of the year, and are standing at the lowest since November 2015.

## Outlook

We believe Nickel prices may continue to remain supported at current levels on lower inventories, structural deficit market along with hopes of robust demand from stainless steel sector and electric vehicle sector. LME Nickel are expected to trade higher and test \$14500-\$15000 per tonne in the coming quarter of 2018 and in MCX, Nickel prices are expected to reach Rs 1050-1130 per kg by the end of the year 2018.

### Demand Supply Scenario:



Source: Narnolia Research, U.S. EIA

US Natural gas market normally shifts into deficit during the November to February period i.e. winter season in US. During this high period of demand, natural gas should be well-supplied or else supply tightness worry will emerge and prices will start to rally higher.

### US Dry gas production

US Dry natural gas production is rising this year and is estimated to be at 82.2 bcf per day in August, up by 0.7 bcf/day in July, almost 7.4 bcf per day higher than last year. In 2018, US Dry gas production has increased by almost 10% on an average as compared to last year. Furthermore, EIA expects the dry natural gas production to keep rising on an average of 84.7 bcf per day in the coming year. Due to significant natural gas production increase in 2018, NYMEX natural gas prices have been unable to breach \$3 per MMBtu for the most of the summer.

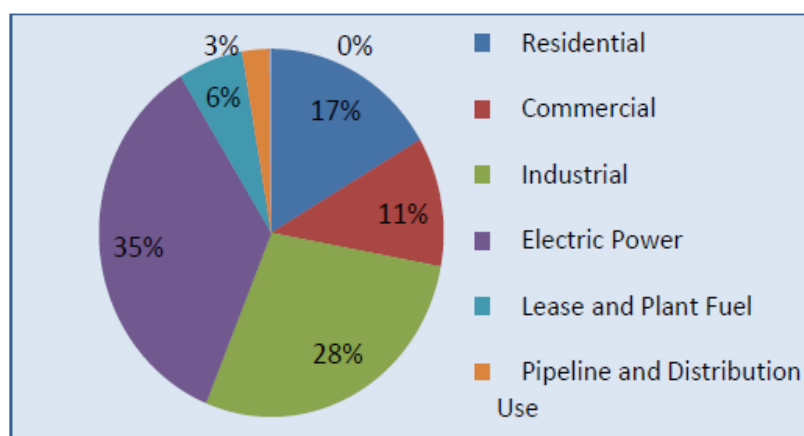
### US Gas consumption

US Natural gas consumption has increased by 7% this year standing at 79.86 bcf per day. This increase in consumption is due to higher demand from the residential and industrial sector along with higher exports as compared to last year levels. Higher consumption of natural gas has been one of the reason for the lowest storage injection this October since the year 2005.

There are two demand driving season for natural gas – Winter and Summer. During winter, demand is measured by number of heating degree days and during summer, natural gas demand is measured by the number of cooling degree days.

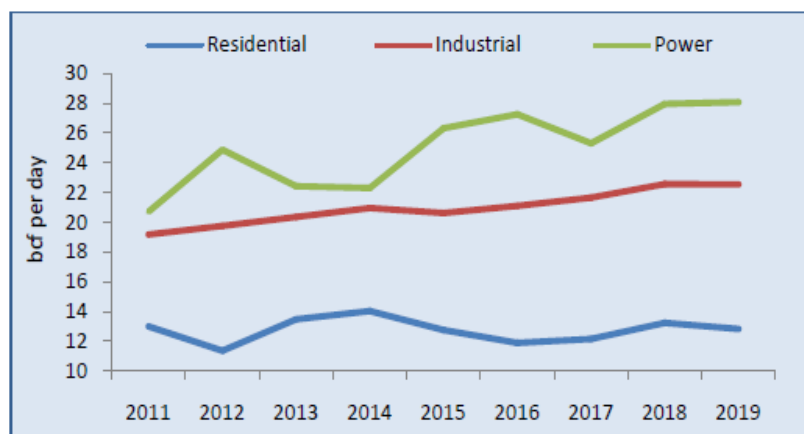
**Cooling degree days (CDD)** reflects the amount of energy required to cool a residence, industrial or a business. In 2018, CDD stood 18% higher than the previous year and averaged 25% above normal on hottest summer leading to strong air conditioning demand in the summer season. Warmer than normal temperatures extended into the month of September and provided further firmness to the natural gas prices.

## Sector wise: Natural Gas Consumption Demand



Source: Narnolia Research, Bloomberg

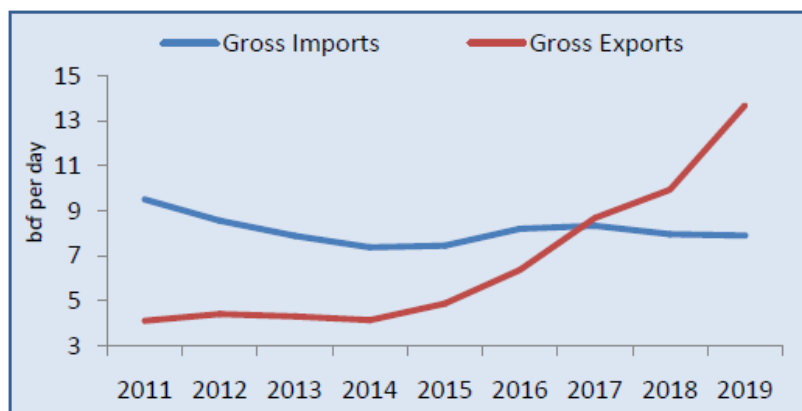
From the above figure, we can conclude that the major consuming sectors of natural gas are Electric Power, Industrial and Residential sector. With Electric power being the major consumer of natural gas comprising 35% of the total natural gas consumption followed by Industrial and Residential sector.



Source: Narnolia Research, Bloomberg

As you can see in the above figure, natural gas demand from largest contributing sector – power and industrial has been rising since the year 2011. Electric Power demand has risen from 20.7 bcf per day in 2011 to 28.07 bcf per day in 2018. Industrial demand of natural gas has increased on a slower rate as compared to electric power however, overall demand from this sector has shown a rising trend.

## US Attention towards Exports

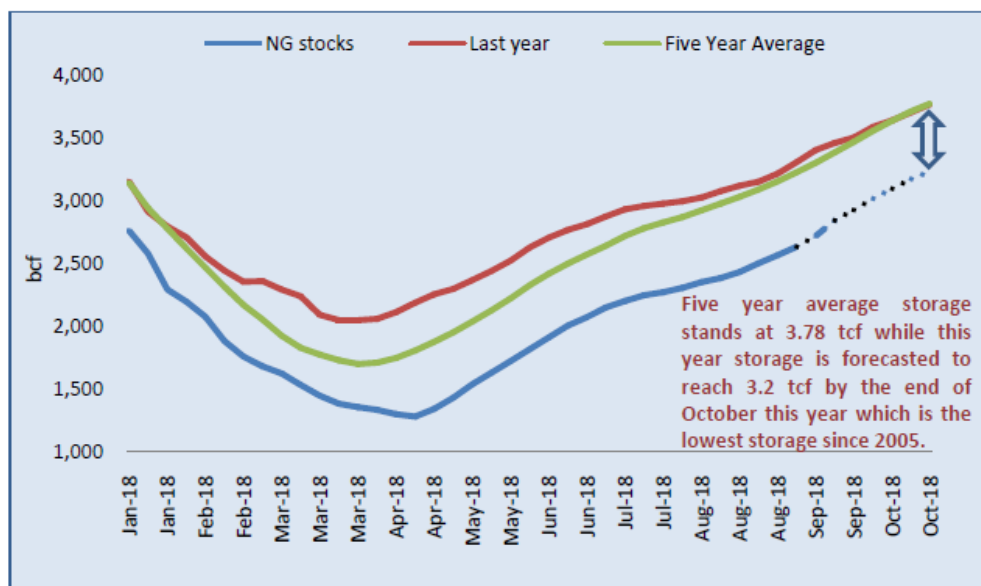


Source: Narnolia Research, EIA Short-Term Energy Outlook

United States had been a net importer while a time ago but after the shale gas revolution in the US, the nation has shifted from net importer to evolving natural gas exporter.

US exports have risen tremendously from 5 bcf per day in 2014 to almost 9 bcf per day in 2018, an increment of 80%. Furthermore, there are expectations of US exports to reach 13 bcf per day in 2019. US Exports accounts for 12% of the total natural gas consumption. US LNG exports have started to rise from last year after the US removed ban on US gas exports. As of now, only few US companies have been allowed to export natural gas to other countries. Moreover, more permission will be granted to other companies to exports this year. We expect US LNG exports to rise by threefold by 2020.

## Storage Levels



Source: Narnolia Research, Bloomberg

As per our calculation, we expect U.S. natural gas inventories will total 3.2 trillion cubic feet (Tcf) at the end of October 2018 which will be way below the five year average of 3.781 tcf. At present, natural gas inventories are at 2.722 tcf, natural gas inventories are 586 bcf or 20% below than the last year level and 672 bcf or 17.5% below the five-year average.

The inventory level is at the lowest level for that time of year since 2005 on high air conditioning demand this summer causing power generators to burn more gas than usual and leaving less gas available to go into storage. U.S. gas inventories will start the winter heating season at the lowest level since 2005, leaving the market vulnerable to winter price spikes.

**Winter season forecast** – Natural gas prices are unlikely to give a steep fall ahead of winter season forecast. If the weather forecast shows a cold winter ahead, prices would immediately get the support on future rise in demand for natural gas.

## Outlook

After taking all the factors into consideration, we expect Natural Gas prices are likely to remain strong this winter season. With low stockpiles heading into the winter demand season, robust domestic consumption and higher natural gas exports from US are propping up prices, which are expected to average \$3.10/MMBtu this year and \$3.25/MMBtu in 2019. The only factor keeping the prices closer towards \$3/MMBtu is the record high production of natural gas in the United States. However, tightness in inventory during the winter season will overshadow the worries of record high production which will drive prices higher. **We expect MCX Natural gas prices to test 245-250 levels** in the coming six months time frame. **Therefore, any downside until the end of October towards Rs 205-210 in MCX should be used as the buying opportunity.**

**Disclosures: Narnolia Financial Advisors Ltd.\* (NFAL)** (FormerlyMicrosec Capital Ltd.) is a SEBI Registered Research Analyst having registration no. INH300002407 valid till 01.12.2020. NFALis engaged in the business of providing Stock Broking, Depository Participant, Merchant Banking, Portfolio Management & distribution of various financial products. Details of associate entities of NFAL is available on the website at [www.narnolia.com](http://www.narnolia.com)

No penalties have been levied on NFAL by any Regulatory/Statutory authority. NFAL, it's associates, Research Analyst or their relative may have financial interest in the subject company. NFAL and/or its associates and/or Research Analyst may have beneficial ownership of 1% or more securities in the subject company at the end of the month immediately preceding the date of publication of the Research Report. NFAL and its associate company(ies), their directors and Research Analyst and their relatives may; (a) from time to time, have a long or short position in, act as principal in, and buy or sell the securities or derivatives thereof of companies mentioned herein. (b) be engaged in any other transaction involving such securities and earn brokerage or other compensation or act as a market maker in the financial instruments of the company(ies) discussed herein or act as an advisor or lender/borrower to such company(ies) or may have any other potential conflict of interests with respect to any recommendation and other related information and opinions.; however the same shall have no bearing whatsoever on the specific recommendations made by the analyst(s), as the recommendations made by the analyst(s) are completely independent of the views of the associates of NFAL even though there might exist an inherent conflict of interest in some of the stocks mentioned in the research report. Research Analyst may have served as director/officer, etc. in the subject company in the last 12 month period. NFAL and/or its associates may have received compensation from the subject company in the past 12 months. In the last 12 months period ending on the last day of the month immediately preceding the date of publication of this research report, NFAL or any of its associates may have: a) managed or co-managed public offering of securities from subject company of this research report, b) received compensation for investment banking or merchant banking or brokerage services from subject company of this research report, c) received compensation for products or services other than investment banking or merchant banking or brokerage services from the subject company of this research report. d) Subject Company may have been a client of NFAL or its associates during 12 months preceding the date of distribution of the research report. NFAL and it's associates have not received any compensation or other benefits from the Subject Company or third party in connection with the research report. NFAL and / or its affiliates may do and seek to do business including Investment Banking with companies covered in the research reports. As a result, the recipients of this report should be aware that NFAL may have a potential conflict of interest that may affect the objectivity of this report. Compensation of Research Analysts is not based on any specific Merchant Banking, Investment Banking or Brokerage service transactions. Research Analyst's views on Subject Company may vary based on Fundamental research and Technical Research. Proprietary trading desk of NFAL or its associates maintains arm's length distance with Research Team as all the activities are segregated from NFAL research activity and therefore it can have an independent view with regards to subject company for which Research Team have expressed their views.

**Terms & Conditions:** This report has been prepared by NFAL and is meant for sole use by the recipient and not for public circulation. The report and information contained herein is strictly confidential and may not be altered in any way, transmitted to, copied or distributed, in part or in whole, to any other person or to the media or reproduced in any form, without prior written consent of NFAL. The report is based on the facts, figures and information that are considered true, correct, reliable and accurate. The intent of this report is not recommendatory in nature. The information is obtained from publicly available media or other sources believed to be reliable. Such information has not been independently verified and no guaranty, representation of warranty, express or implied, is made as to its accuracy, completeness or correctness. All such information and opinions are subject to change without notice. The report is prepared solely for informational purpose and does not constitute an offer document or solicitation of offer to buy or sell or subscribe for securities or other financial instruments for the clients. Nothing in this report constitutes investment, legal, accounting and tax advice or a representation that any investment or strategy is suitable or appropriate to your specific circumstances.The securities discussed and opinions expressed in this report may not be suitable for all investors, who must make their own investment decisions, based on their own investment objectives, financial positions and needs of specific recipient. Certain transactions - including those involving futures, options, another derivative products as well as non-investment grade securities - involve substantial risk and are not suitable for all investors.Each recipient of this document should make such investigations as it deems necessary to arrive at an independent evaluation of an investment in the securities of companies referred to in this document (including the merits and risks involved), and should consult his/her/its own advisors to determine the merits and risks of such an investment. Though disseminated to all the customers simultaneously, not all customers may receive this report at the same time. NFAL will not treat recipients as customers by virtue of their receiving this report. Neither the Company, not its directors, employees, agents or representatives shall be liable for any damages whether direct or indirect, incidental, special or consequential including lost revenue or lost profits or lost opportunities that may arise from or in connection with the use of the information/report. The person accessing this information specifically agrees to exempt NFAL or any of its affiliates or employees from, any and all responsibility/liability arising from such misuse and agrees not to hold NFAL or any of its affiliates or employees responsible for any such misuse and further agrees to hold NFAL or any of its affiliates or employees free and harmless from all losses, costs, damages, expenses that may be suffered by the person accessing this information due to any errors and delays.

This report is not directed or intended for distribution to or use by any person or entity resident in a state, country or any jurisdiction, where such distribution, publication, availability or use would be contrary to law, regulation or which would subject NFAL & its group companies to registration or licensing requirements within such jurisdictions.

**Analyst Certification** The views expressed in this research report accurately reflect the personal views of the analyst(s) about the subject securities or issues, and no part of the compensation of the research analyst(s) was, is, or will be directly or indirectly related to the specific recommendations and views expressed by research analyst(s) in this report.

Analyst's ownership of the stocks mentioned in the Report	NIL
---	-----

A graph of daily closing prices of securities is available at [www.nseindia.com](http://www.nseindia.com), [www.bseindia.com](http://www.bseindia.com).

\*The name of the Company has been changed from “Microsec Capital Limited” to “Narnolia Financial Advisors Limited” pursuant to change of control. The change in name has been duly effected in the records of the Registrar of Companies (ROC). The application for fresh registration in the new name of “Narnolia Financial Advisors Limited” pursuant to change of control is under process with SEBI.

Correspondence Office Address: Arch Waterfront, 5<sup>th</sup> Floor, Block GP, Saltlake, Sector 5, Kolkata 700 091; Tel No.: 033-40541700; [www.narnolia.com](http://www.narnolia.com).  
Registered Office Address: Marble Arch, Office 201, 2<sup>nd</sup> Floor, 236B, AJC Bose Road, Kolkata 700 020; Tel No.: 033-4050 1500; [www.narnolia.com](http://www.narnolia.com)

Compliance Officer: Manish Kr Agarwal, Email Id: [mkagarwal@narnolia.com](mailto:mkagarwal@narnolia.com), Contact No.:033-40541700.

Registration details of Company: Narnolia Financial Advisors Ltd. (NFAL): SEBI Stock Broker Registration: INZ000166737 (NSE/BSE/MSEI); NSDL/CDSL: IN-DP-380-2018; Research Analyst: INH300002407, Merchant Banking: (Registration No.: INM000010791), PMS: (Registration No.: INP000002304), AMFIRegistered Mutual Fund distributor: ARN 3087

Registration Details of Group entities: G. Raj & Company Consultants Ltd (G RAJ)-BSE Broker INZ260010731; NSDL DP: IN-DP-NSDL-371-2014 || Narnolia Commerze Limited-MCX/NCDEX Commodities Broker: INZ000051636 || Narnolia Velox Advisory Ltd.- SEBI Registered PMS: INP000005109 || Eastwind Capital Advisors Pvt Ltd. (EASTWIND)-SEBI Registered Investment Adviser: INA300005439 || Narnolia Insurance Brokers Limited-IRDA Licensed Direct Insurance Broker (Life & Non-Life) License No.134 || Narnolia Securities Ltd. (NSL)-AMFI Registered Mutual Fund distributor: ARN 20558, PFRDA NPS POP: 27092018 || Narnolia Capital Advisors Pvt. Ltd. - RBI Registered NBFC:B.05.02568.

**Disclaimer:**

This report has been prepared by Narnolia Financial Advisors Ltd. (NFAL)and is meant for sole use by the recipient and not for public circulation. The report and information contained herein is strictly confidential and may not be altered in any way, transmitted to, copied or distributed, in part or in whole, to any other person or to the media or reproduced in any form, without prior written consent of NFAL. The report is based on the facts, figures and information that are considered true, correct, reliable and accurate. The intent of this report is not recommendatory in nature. The information is obtained from publicly available media or other sources believed to be reliable. Such information has not been independently verified and no guaranty, representation of warranty, express or implied, is made as to its accuracy, completeness or correctness. All such information and opinions are subject to change without notice. The report is prepared solely for informational purpose and does not constitute an offer document or solicitation of offer to buy or sell or subscribe for securities or other financial instruments for the clients. Nothing in this report constitutes investment, legal, accounting and tax advice or a representation that any investment or strategy is suitable or appropriate to your specific circumstances.The securities discussed and opinions expressed in this report may not be suitable for all investors, who must make their own investment decisions, based on their own investment objectives, financial positions and needs of specific recipient. Certain transactions -including those involving futures, options, another derivative products as well as non-investment grade securities - involve substantial risk and are not suitable for all investors.Each recipient of this document should make such investigations as it deems necessary to arrive at an independent evaluation of an investment in the securities of companies referred to in this document (including the merits and risks involved), and should consult his/her/its own advisors to determine the merits and risks of such an investment. Though disseminated to all the customers simultaneously, not all customers may receive this report at the same time. NFAL will not treat recipients as customers by virtue of their receiving this report. Neither the Company, not its directors, employees, agents or representatives shall be liable for any damages whether direct or indirect, incidental, special or consequential including lost revenue or lost profits or lost opportunities that may arise from or in connection with the use of the information/report. The person accessing this information specifically agrees to exempt NFAL or any of its affiliates or employees from, any and all responsibility/liability arising from such misuse and agrees not to hold NFAL or any of its affiliates or employees responsible for any such misuse and further agrees to hold NFAL or any of its affiliates or employees free and harmless from all losses, costs, damages, expenses that may be suffered by the person accessing this information due to any errors and delays.

This report is not directed or intended for distribution to or use by any person or entity resident in a state, country or any jurisdiction, where such distribution, publication, availability or use would be contrary to law, regulation or which would subject NFAL & its group companies to registration or licensing requirements within such jurisdictions.