

Trading Calls

MERCK Long/Buy 18th December 2018

Merck Limited has found a strong support near 100 SMA and thereafter started to give pullback from that level. It has made positive divergences both in RSI & Stochastic. So some fresh upside is very likely from the current level. Therefore we recommend initiating long position in the stock around 2987 by keeping a stop loss at 2794 and the upside targets are 3064 and then 3497.

AXIS BANK Long/Buy 11th December 2018

Scrip seems bottoming out after hitting the low of 580 and gave a sharp pullback on upside. Emergence of Bullish belt hold along with Bullish engulfing suggest reversal on cards. Strong support is seen in the zone of 580-575 as it is the zone of 50% and 61.8% retracement of the upside move from the low 534 to the high of 638 levels. Accelerated volume with decent breakout is conducive for the prices. One can go long in the scrip near the levels of 590-590 and on the dip towards 570-575 with stop loss of 549 for the target of 650 and 675 levels.

Institutional Turnover

FII	Buy(cr.)	Sell(cr.)	Net(cr.)
24-Dec-18	1,733	2,310	(577)
Dec-18	71,073	73,542	(2,469)
DII	Buy(cr.)	Sell(cr.)	Net(cr.)
24-Dec-18	2,077	1,891	186
Dec-18	50,576	50,922	(345)

FII DERIVATIVES POSITION FOR 24-Dec-2018

	Net (Amt. in crs)
INDEX FUTURES	205
INDEX OPTIONS	1,688
STOCK FUTURES	(646)
STOCK OPTIONS	(186)

Market	Value	% Change
SGX Nifty (at 8.00 am IST)	10635.50	0.20%

Nifty Key Levels

Support	S1: 10580	S2 : 10620
Resistance	R1 : 10680	R2 : 10720

Market Outlook

Nifty has made a double top near 100 DMA and thereafter started to correct from that level. The main reason of sharp fall since last couple of trading days is the formation of negative divergence in RSI as well as formation of a shooting star pattern on weekly chart (last week nifty closed by making this pattern). Therefore some more sell-off is possible from the current level. On the downward path immediate crucial support of Nifty is at 50 DMA (10578).

Sectoral Performance (%)

	1 Day	1 Week	1 Month	1 Year
Auto Components	(1.79)	(1.91)	(0.03)	(19.04)
Automobiles	(1.24)	(1.59)	1.97	(23.45)
Chemicals	(1.21)	(0.30)	1.12	(3.74)
Construction & Engineering	(0.67)	(0.32)	(0.20)	(12.15)
Construction Materials	(2.05)	(1.62)	0.46	(20.93)
Diversified Financial Services	(1.10)	0.98	4.07	(5.10)
Electrical Equipment	(0.96)	(2.34)	0.68	(12.33)
Energy	(1.03)	(2.28)	(0.72)	(8.19)
Financials	(0.67)	0.16	3.57	(2.66)
Health Care	(0.41)	(0.62)	(4.23)	(5.72)
Household Durables	(0.74)	(1.92)	5.25	(17.71)
Household & Personal Products	(1.22)	(3.26)	6.43	19.26
Information Technology	0.67	(3.83)	4.33	23.96
Metals/Mining/Minerals	(1.86)	(1.82)	(2.80)	(18.78)
Telecom	0.44	(0.34)	(3.48)	(39.61)
Utilities	(1.36)	(0.45)	(0.08)	(16.38)

Participant wise Open Interest In Equities Derivative (no. of contracts)

Long Position				
	DII	FII	Pro	Other
Future Index	73883	187713	28400	151347
Future Stock	37563	888995	198284	877148
Option Index Call	32278	244382	187895	769576
Option Index Put	90979	416431	220361	610378
Option Stock Call	0	46268	62592	366333
Option Stock Put	207	39344	66851	151787

Short Position				
	DII	FII	Pro	Other
Future Index	18038	209400	34504	179401
Future Stock	1016116	596939	152868	236067
Option Index Call	0	94823	421233	718075
Option Index Put	0	156800	284496	896853
Option Stock Call	0	42507	160705	271981
Option Stock Put	0	36192	71966	150031

High ES & High PS Stock Maintaining Strength

BSE Code	NSE CODE	1 Month Return %
500123	DRBECK	25.1
531335	ZYDUSWELL	21.0
533179	PERSISTENT	15.6
500840	EIHOTEL	15.1
509930	SUPREMEIND	14.0
500830	COLPAL	13.4
532424	GODREJCP	13.4
522074	ELGIEQUIP	12.5
505890	WIDIA	12.5
526299	MPHASIS	11.9

High ES & Low PS Stock Showing Strength

BSE Code	NSE CODE	1 Month Return %
500135	ESSELPACK	22.1
500266	MAHSCOOTER	21.1
535789	IBULHSGFIN	16.0
517385	SYMPHONY	15.2
532706	INOXLEISUR	14.5
512161	8KMILES	12.1
532659	IDFC	11.3
500182	HEROMOTOCO	8.7
511676	GICHSGFIN	7.5
517334	MOTHERSUMI	7.3

Low ES & Low PS Stock Maintaining Weakness

BSE Code	NSE CODE	1 Month Return %
531737	GREENCREST	(34.57)
532617	JETAIRWAYS	(20.97)
532822	IDEA	(15.88)
532915	RELIGARE	(13.48)
500101	ARVIND	(12.07)
500645	DEEPAKFERT	(11.20)
532939	RPOWER	(11.11)
500111	RELCAPITAL	(10.95)
533758	APLAPOLLO	(10.66)
500125	EIDPARRY	(8.98)

Low ES & High PS Stock Showing Weakness

BSE Code	NSE CODE	1 Month Return %
505242	DYNAMATECH	(8.71)
532144	WELCORP	(8.12)
532843	FORTIS	(7.56)
515030	ASAHIINDIA	(7.49)
532482	GRANULES	(7.29)
532454	BHARTIARTL	(6.86)
509820	PAPERPROD	(6.28)
505192	SMLISUZU	(6.14)
501425	BBTC	(5.77)
524404	MARKSANS	(4.94)

* ES- Earning Score is average of EM (Earning Momentum defined as relative performance in terms of operating profit growth) and EQ (Earning Quality defined as relative balance sheet strength in terms of debt and working capital)

* PS- Price Score is of a company is relative price performance in multiple time-frame

Analysis shown here is only for companies with market cap more than Rs 1,000 Cr.

STDC / R25 Open Calls for 26-Dec-2018 (2)

STDC (2)									
No	Date	Type	Buy/Sell	Stock	Entry1	Entry2	SL	Tgt 1	Tgt 2
1	18-Dec-18	STDC	BUY	MERCK	3022		2794	3264	3497
2	11-Dec-18	STDC	BUY	AXIS BANK	592.5	572.5	549	650	675

VIEW

Indian market sneezes due to the cold suffered from global market after the less expected dovish comment from FED meet. Bulls suddenly lost their foot on D-street as indices nosedived on friday with benchmark indices skidding about 2% each, on the concern about the global fall. Waiving of farm loan and populist budget ahead of next general election are another concern for the market which can worsen government fiscal deficit. After nine days of winning streak, indices took a breather and negate the formation of higher highs & higher lows on daily chart which imply weakness but possibility of pullback can not ruled out as market is trading near 200 DMA support levels.

NIFTY-

- Nifty played well except friday where it formed long bear candle
- Emergence of shooting star on channel resistance line not augurs well for bulls
- Failure to surpass above 100 DMA is another concern for bulls in coming sessions
- Due to truncated week, upside is looking capped and selling pressure may continue
- On sustaining below 10735, weakness can intensify and it can tumble down till 10560 and 10470 levels.
- However, 200 DMA support near an immediate support may halt this down swing
- Nifty can bounce back towards 10960-10985 zone where major resistance is seen
- Broader set up remain positive as long as it sustains above 10330 levels and every decline should be bought

CHART ANALYSIS



SUPPORT & RESISTANCE LEVELS

	NIFTY LEVEL	JUSTIFICATION
Resistance 2	10985	Peak of shooting star
Resistance 1	10940	100 DMA
Close	10754	
Support 1	10735	near 200 DMA
Support 2	1050	Previous swing low

Banknifty Weekly

24-Dec-18

VIEW

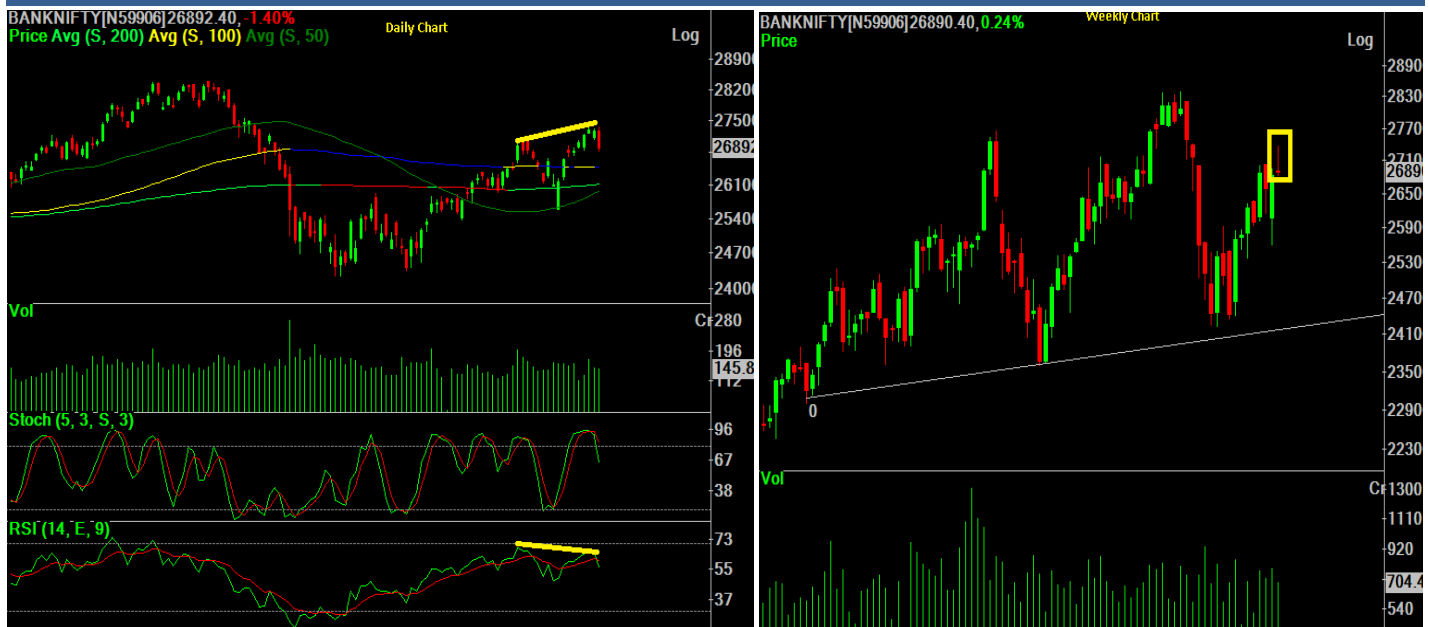
After starting with a green session, Bank Nifty continuously rose to make a weekly high of 27364.35 on Wednesday of last week. However some selling pressure up to 26823 was witnessed on Friday. At the end of the week the index closed with a marginal gain of 0.16% over its previous week's close.

OBSERVATIONS:

- 1) A 'Gravestone Doji' was formed on weekly chart of Bank Nifty. It is a bearish reversal candlestick pattern. Its long upper shadow suggests that the bullish advance in the beginning of session was overcome by bears by the end of the session.
- 2) A 'Negative Divergence' in RSI was formed on daily chart of Bank Nifty. It happens when the price makes a new high while the RSI is unable to do so.

According to the above observations it can be concluded that some correction in bank Nifty is likely to witness in the current week due to occurrence negative divergence in RSI as well as the formation of Gravestone Doji on weekly chart. On the downward path 100 DMA (26494), 200 DMA (26116) and 50 DMA (25966) would act as strong supports of the index.

CHART ANALYSIS



SUPPORT & RESISTANCE LEVELS

RESISTANCE/SUPPORT	BANKNIFTY LEVEL
Resistance 2	27365
Resistance 1	27055
Close	26870
Support 1	26494
Support 2	26116

VIEW

After depreciating two weeks, Rupee gave longest winning streak since nov 30. Fear of global slowdown have spooked investors, leading to downtrend on back of falling prices of Brent and WTI crude. Fall in crude oil prices has also eased concerns over India's widening current account deficit. As a result of decline in oil prices, the rupee too staged recovery from low points. On the other hand, domestic macros are gradually improving with pick up in industrial production and softening of CPI inflation which has given space to RBI to change its outlook from 'calibrated tightening' to 'neutral' will help in maintaining optimism for Rupee in the coming sessions.

TECHNICAL FACTORS-

- a) In line with our previous report, USDINR failed to cross trend line resistance and slipped lower
- b) Emergence of Bearish Head and Shoulder where right shoulder is going to form in coming week
- c) Support is at 69.55 and as long as it sustains above this, pair is likely to bounce back till the peak of left hand shoulder which comes at 71.36. View negates, if pair will start sustaining above 71.36 levels
- d) **A decisive break below 69.55 can see the pair slip towards 66.50 which is the expected target of bearish head & shoulder**
- e) Upside resistance is seen at 70.90 (near 21 DMA) followed by 71.36 levels

CHART



STDC : Long / BUY

18-Dec-18

BSE Code	500126
NSE Symbol	MERCK
52wk Range H/L	1145/3554.40
Mkt Capital (Rs Cr)	5,013.00
Av.Cash Volume(,000)	33.3
Open Interest	NA

Buy Price	3022
Stop Loss	2794
Target Price1	3264
Target Price2	3497
Upside in Tgt1	8%
Upside in Tgt2	16%

Technical Chart



STDC BUY MERCK @ 3022 SL-2794 (CLOSING BASIS) TGT-3264,3497

Merck Limited has found a strong support near 100 SMA and thereafter started to give pullback from that level. It has made positive divergences both in RSI & Stochastic. So some fresh upside is very likely from the current level. Therefore we recommend initiating long position in the stock around 2987 by keeping a stop loss at 2794 and the upside targets are 3064 and then 3497.

STDC : Long / BUY

11-Dec-18

BSE Code	500112
NSE Symbol	AXIS BANK
52wk Range H/L	635/447
Mkt Capital (Rs Cr)	1,06,335.00
Av.Cash Volume(,000)	18777302
Open Interest	

Buy Price	582.5
Stop Loss	549
Target Price1	650
Target Price2	675
Upside in Tgt1	12%
Upside in Tgt2	16%

Technical Chart



STDC BUY AXIS BANK @ 590-595 OR ON THE DIP TOWARDS 570-575 SL-549 (CLOSING BASIS) TGT- 650, 675

Scrip seems bottoming out after hitting the low of 580 and gave a sharp pullback on upside. Emergence of Bullish belt hold along with Bullish engulfing suggest reversal on cards. Strong support is seen in the zone of 580-575 as it is the zone of 50% and 61.8% retracement of the upside move from the low 534 to the high of 638 levels. Accelerated volume with decent breakout is conducive for the prices. One can go long in the scrip near the levels of 590-590 and on the dip towards 570-575 with stop loss of 549 for the target of 650 and 675 levels.

LME Aluminium prices have fallen towards two year low at \$1920 per tonne after the supply tightness eased in the raw material sector and after United States decided to delay the sanctions on Russia, one of the world's largest producer of the metal. Prices have moved below its cost of production in China pressurizing the margins of the producers.

Globally, aluminium production has remained flat as the major producers like China is unable to increase the output as the current prices are unprofitable. While, US on the other side is starting to start its smelters but the outages at Canada, Brazil have offset the rise in production. China contributes almost 56% to the global production. And saying if China slows down its production rate, the world would be in huge shortfall in the coming year.

China Supply Concerns:

China's aluminium production has been falling since last three months despite of no winter output curtailments in place. China's capacity growth rate is slowing as old capacity is been shut down by the local government following strict targets set by China and the rate of new smelter capacity is falling. Although, the key ingredient, bauxite is restricted to produce during winter period on China's environmental crackdown.

Aluminum Corp of China Ltd also known as Chalco, China's largest producer, is cutting output on some of its aluminum production lines in northern China. The company is set to reduce some 470,000 tonnes of production, nearly 12% of company's output. Two smelters in Qinghai province of China of 270,000 tonnes capacity have gone off line in the last couple of weeks. These cuts have been inculcated as prices are trading below cost of production driven by reducing demand and ample of supply, forcing smelters to either partially or fully shut down its production.

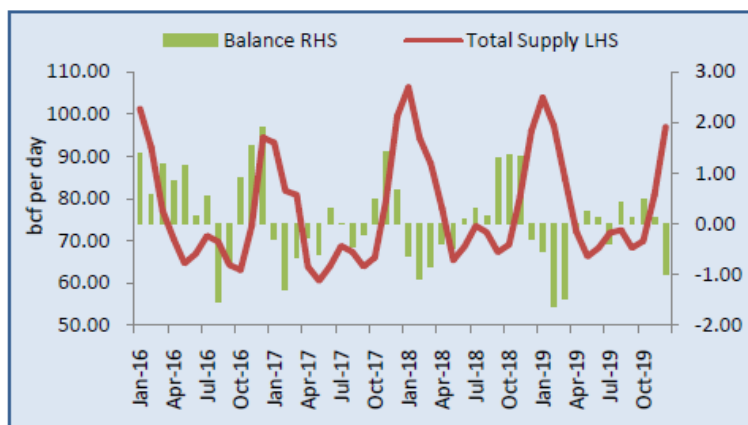
US Sanctions Tensions

US sanctions on Russia will continue add upside volatility in global aluminium prices. The U.S. Treasury Department last month postponed a Dec. 12 deadline for Deripaska to reduce his holdings in the companies, giving the Russian tycoon until Jan. 7.

Outlook

Overall, aluminium prices have declined drastically fell by almost 20% since April 2018 on extension of US sanction on Rusal and easeness in raw material supply. But we believe still some tightness in alumina market persists, as the Alunorte refinery is partially shut. Furthermore, Chinese production is expected to come down on smelters shutdown due to lower prices. However, demand weakness due to trade duties can provide some selling pressure. but prices will remain supported at lower levels. We expect MCX Aluminium prices will take support of 127-125 levels and move higher towards Rs 150-155 per kg in the short term.

Demand Supply Scenario:



Source: Narnolia Research, U.S. EIA

US Natural gas market normally shifts into deficit during the November to February period i.e. winter season in US. During this high period of demand, natural gas should be well-supplied or else supply tightness worry will emerge and prices will start to rally higher.

US Dry gas production

US Dry natural gas production is rising this year and is estimated to be at 82.2 bcf per day in August, up by 0.7 bcf/day in July, almost 7.4 bcf per day higher than last year. In 2018, US Dry gas production has increased by almost 10% on an average as compared to last year. Furthermore, EIA expects the dry natural gas production to keep rising on an average of 84.7 bcf per day in the coming year. Due to significant natural gas production increase in 2018, NYMEX natural gas prices have been unable to breach \$3 per MMBtu for the most of the summer.

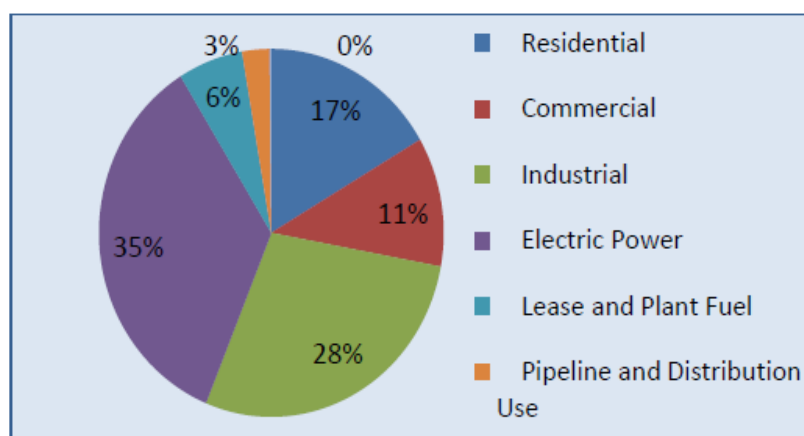
US Gas consumption

US Natural gas consumption has increased by 7% this year standing at 79.86 bcf per day. This increase in consumption is due to higher demand from the residential and industrial sector along with higher exports as compared to last year levels. Higher consumption of natural gas has been one of the reason for the lowest storage injection this October since the year 2005.

There are two demand driving season for natural gas – Winter and Summer. During winter, demand is measured by number of heating degree days and during summer, natural gas demand is measured by the number of cooling degree days.

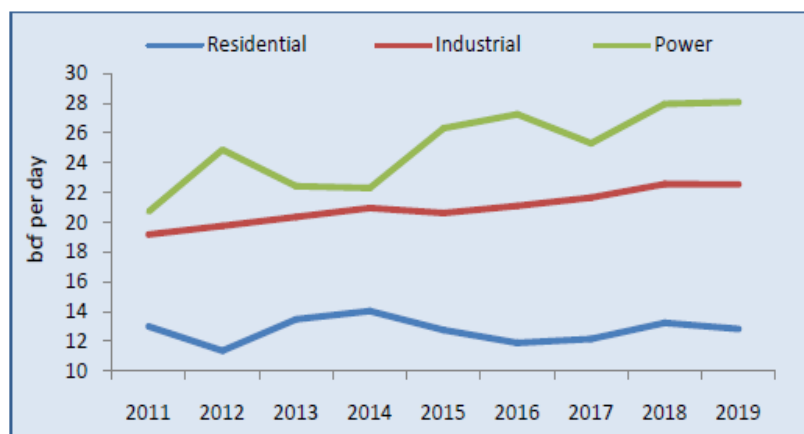
Cooling degree days (CDD) reflects the amount of energy required to cool a residence, industrial or a business. In 2018, CDD stood 18% higher than the previous year and averaged 25% above normal on hottest summer leading to strong air conditioning demand in the summer season. Warmer than normal temperatures extended into the month of September and provided further firmness to the natural gas prices.

Sector wise: Natural Gas Consumption Demand



Source: Narnolia Research, Bloomberg

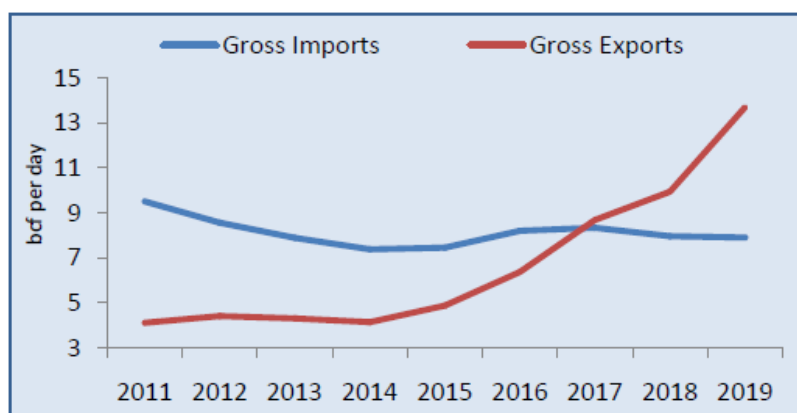
From the above figure, we can conclude that the major consuming sectors of natural gas are Electric Power, Industrial and Residential sector. With Electric power being the major consumer of natural gas comprising 35% of the total natural gas consumption followed by Industrial and Residential sector.



Source: Narnolia Research, Bloomberg

As you can see in the above figure, natural gas demand from largest contributing sector – power and industrial has been rising since the year 2011. Electric Power demand has risen from 20.7 bcf per day in 2011 to 28.07 bcf per day in 2018. Industrial demand of natural gas has increased on a slower rate as compared to electric power however, overall demand from this sector has shown a rising trend.

US Attention towards Exports

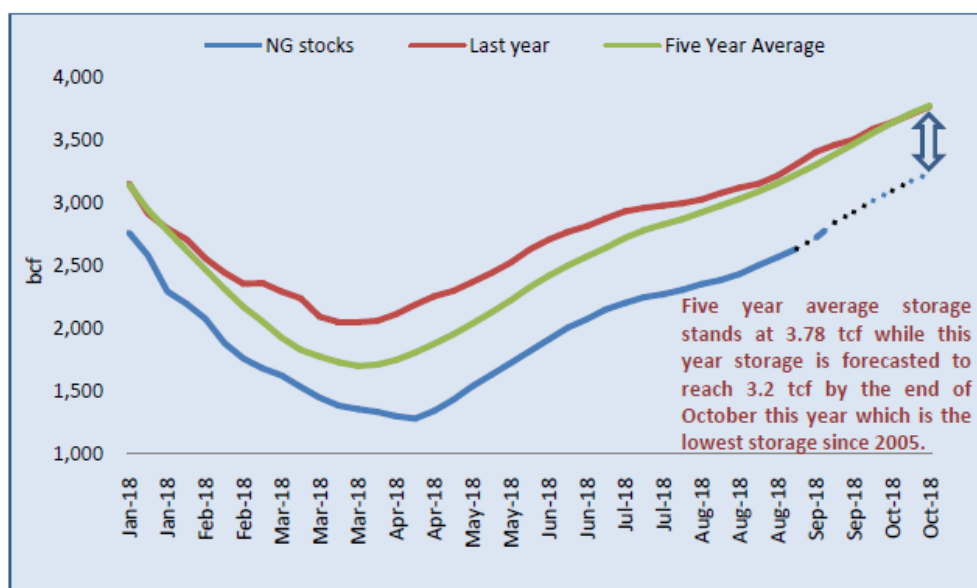


Source: Narnolia Research, EIA Short-Term Energy Outlook

United States had been a net importer while a time ago but after the shale gas revolution in the US, the nation has shifted from net importer to evolving natural gas exporter.

US exports have risen tremendously from 5 bcf per day in 2014 to almost 9 bcf per day in 2018, an increment of 80%. Furthermore, there are expectations of US exports to reach 13 bcf per day in 2019. US Exports accounts for 12% of the total natural gas consumption. US LNG exports have started to rise from last year after the US removed ban on US gas exports. As of now, only few US companies have been allowed to export natural gas to other countries. Moreover, more permission will be granted to other companies to exports this year. We expect US LNG exports to rise by threefold by 2020.

Storage Levels



Source: Narnolia Research, Bloomberg

As per our calculation, we expect U.S. natural gas inventories will total 3.2 trillion cubic feet (Tcf) at the end of October 2018 which will be way below the five year average of 3.781 tcf. At present, natural gas inventories are at 2.722 tcf, natural gas inventories are 586 bcf or 20% below than the last year level and 672 bcf or 17.5% below the five-year average.

The inventory level is at the lowest level for that time of year since 2005 on high air conditioning demand this summer causing power generators to burn more gas than usual and leaving less gas available to go into storage. U.S. gas inventories will start the winter heating season at the lowest level since 2005, leaving the market vulnerable to winter price spikes.

Winter season forecast – Natural gas prices are unlikely to give a steep fall ahead of winter season forecast. If the weather forecast shows a cold winter ahead, prices would immediately get the support on future rise in demand for natural gas.

Outlook

After taking all the factors into consideration, we expect Natural Gas prices are likely to remain strong this winter season. With low stockpiles heading into the winter demand season, robust domestic consumption and higher natural gas exports from US are propping up prices, which are expected to average \$3.10/MMBtu this year and \$3.25/MMBtu in 2019. The only factor keeping the prices closer towards \$3/MMBtu is the record high production of natural gas in the United States. However, tightness in inventory during the winter season will overshadow the worries of record high production which will drive prices higher. **We expect MCX Natural gas prices to test 245-250 levels** in the coming six months time frame. **Therefore, any downside until the end of October towards Rs 205-210 in MCX should be used as the buying opportunity.**

Disclosures: Narnolia Financial Advisors Ltd.* (NFAL) (FormerlyMicrosec Capital Ltd.) is a SEBI Registered Research Analyst having registration no. INH300002407 valid till 01.12.2020. NFALis engaged in the business of providing Stock Broking, Depository Participant, Merchant Banking, Portfolio Management & distribution of various financial products. Details of associate entities of NFAL is available on the website at www.narnolia.com

No penalties have been levied on NFAL by any Regulatory/Statutory authority. NFAL, it's associates, Research Analyst or their relative may have financial interest in the subject company. NFAL and/or its associates and/or Research Analyst may have beneficial ownership of 1% or more securities in the subject company at the end of the month immediately preceding the date of publication of the Research Report. NFAL and its associate company(ies), their directors and Research Analyst and their relatives may; (a) from time to time, have a long or short position in, act as principal in, and buy or sell the securities or derivatives thereof of companies mentioned herein. (b) be engaged in any other transaction involving such securities and earn brokerage or other compensation or act as a market maker in the financial instruments of the company(ies) discussed herein or act as an advisor or lender/borrower to such company(ies) or may have any other potential conflict of interests with respect to any recommendation and other related information and opinions.; however the same shall have no bearing whatsoever on the specific recommendations made by the analyst(s), as the recommendations made by the analyst(s) are completely independent of the views of the associates of NFAL even though there might exist an inherent conflict of interest in some of the stocks mentioned in the research report. Research Analyst may have served as director/officer, etc. in the subject company in the last 12 month period. NFAL and/or its associates may have received compensation from the subject company in the past 12 months. In the last 12 months period ending on the last day of the month immediately preceding the date of publication of this research report, NFAL or any of its associates may have: a) managed or co-managed public offering of securities from subject company of this research report, b) received compensation for investment banking or merchant banking or brokerage services from subject company of this research report, c) received compensation for products or services other than investment banking or merchant banking or brokerage services from the subject company of this research report. d) Subject Company may have been a client of NFAL or its associates during 12 months preceding the date of distribution of the research report. NFAL and it's associates have not received any compensation or other benefits from the Subject Company or third party in connection with the research report. NFAL and / or its affiliates may do and seek to do business including Investment Banking with companies covered in the research reports. As a result, the recipients of this report should be aware that NFAL may have a potential conflict of interest that may affect the objectivity of this report. Compensation of Research Analysts is not based on any specific Merchant Banking, Investment Banking or Brokerage service transactions. Research Analyst's views on Subject Company may vary based on Fundamental research and Technical Research. Proprietary trading desk of NFAL or its associates maintains arm's length distance with Research Team as all the activities are segregated from NFAL research activity and therefore it can have an independent view with regards to subject company for which Research Team have expressed their views.

Terms & Conditions: This report has been prepared by NFAL and is meant for sole use by the recipient and not for public circulation. The report and information contained herein is strictly confidential and may not be altered in any way, transmitted to, copied or distributed, in part or in whole, to any other person or to the media or reproduced in any form, without prior written consent of NFAL. The report is based on the facts, figures and information that are considered true, correct, reliable and accurate. The intent of this report is not recommendatory in nature. The information is obtained from publicly available media or other sources believed to be reliable. Such information has not been independently verified and no guaranty, representation of warranty, express or implied, is made as to its accuracy, completeness or correctness. All such information and opinions are subject to change without notice. The report is prepared solely for informational purpose and does not constitute an offer document or solicitation of offer to buy or sell or subscribe for securities or other financial instruments for the clients. Nothing in this report constitutes investment, legal, accounting and tax advice or a representation that any investment or strategy is suitable or appropriate to your specific circumstances. The securities discussed and opinions expressed in this report may not be suitable for all investors, who must make their own investment decisions, based on their own investment objectives, financial positions and needs of specific recipient. Certain transactions - including those involving futures, options, another derivative products as well as non-investment grade securities - involve substantial risk and are not suitable for all investors.Each recipient of this document should make such investigations as it deems necessary to arrive at an independent evaluation of an investment in the securities of companies referred to in this document (including the merits and risks involved), and should consult his/her/its own advisors to determine the merits and risks of such an investment. Though disseminated to all the customers simultaneously, not all customers may receive this report at the same time. NFAL will not treat recipients as customers by virtue of their receiving this report. Neither the Company, not its directors, employees, agents or representatives shall be liable for any damages whether direct or indirect, incidental, special or consequential including lost revenue or lost profits or lost opportunities that may arise from or in connection with the use of the information/report. The person accessing this information specifically agrees to exempt NFAL or any of its affiliates or employees from, any and all responsibility/liability arising from such misuse and agrees not to hold NFAL or any of its affiliates or employees responsible for any such misuse and further agrees to hold NFAL or any of its affiliates or employees free and harmless from all losses, costs, damages, expenses that may be suffered by the person accessing this information due to any errors and delays. This report is not directed or intended for distribution to or use by any person or entity resident in a state, country or any jurisdiction, where such distribution, publication, availability or use would be contrary to law, regulation or which would subject NFAL & its group companies to registration or licensing requirements within such jurisdictions.

Analyst Certification The views expressed in this research report accurately reflect the personal views of the analyst(s) about the subject securities or issues, and no part of the compensation of the research analyst(s) was, is, or will be directly or indirectly related to the specific recommendations and views expressed by research analyst(s) in this report.

Analyst's ownership of the stocks mentioned in the Report	NIL
---	-----

A graph of daily closing prices of securities is available at www.nseindia.com, www.bseindia.com.

*The name of the Company has been changed from "Microsec Capital Limited" to "Narnolia Financial Advisors Limited" pursuant to change of control. The change in name has been duly effected in the records of the Registrar of Companies (ROC). The application for fresh registration in the new name of "Narnolia Financial Advisors Limited" pursuant to change of control is under process with SEBI.

Correspondence Office Address: Arch Waterfront, 5th Floor, Block GP, Saltlake, Sector 5, Kolkata 700 091; Tel No.: 033-40541700; www.narnolia.com.
Registered Office Address: Marble Arch, Office 201, 2nd Floor, 236B, AIC Bose Road, Kolkata 700 020; Tel No.: 033-4050 1500; www.narnolia.com

Compliance Officer: Manish Kr Agarwal, Email Id: mkagarwal@narnolia.com, Contact No.:033-40541700.

Registration details of Company: Narnolia Financial Advisors Ltd. (NFAL): SEBI Stock Broker Registration: INZ000166737 (NSE/BSE/MSEI); NSDL/CDSL: IN-DP-380-2018; Research Analyst: INH300002407, Merchant Banking: (Registration No.: INM000010791), PMS: (Registration No.: INP000002304), AMFIRegistered Mutual Fund distributor: ARN 3087

Registration Details of Group entities: G. Raj & Company Consultants Ltd (G RAJ)-BSE Broker INZ260010731; NSDL DP: IN-DP-NSDL-371-2014 || Narnolia Commerze Limited-MCX/NCDEX Commodities Broker: INZ000051636 || Narnolia Velox Advisory Ltd.- SEBI Registered PMS: INP000005109 || Eastwind Capital Advisors Pvt Ltd. (EASTWIND)-SEBI Registered Investment Adviser: INA300005439 || Narnolia Insurance Brokers Limited-IRDA Licensed Direct Insurance Broker (Life & Non-Life) License No.134 || Narnolia Securities Ltd. (NSL)-AMFI Registered Mutual Fund distributor: ARN 20558, PFRDA NPS POP: 27092018 || Narnolia Capital Advisors Pvt. Ltd. - RBI Registered NBFC:B.05.02568.

Disclaimer:

This report has been prepared by Narnolia Financial Advisors Ltd. (NFAL)and is meant for sole use by the recipient and not for public circulation. The report and information contained herein is strictly confidential and may not be altered in any way, transmitted to, copied or distributed, in part or in whole, to any other person or to the media or reproduced in any form, without prior written consent of NFAL. The report is based on the facts, figures and information that are considered true, correct, reliable and accurate. The intent of this report is not recommendatory in nature. The information is obtained from publicly available media or other sources believed to be reliable. Such information has not been independently verified and no guaranty, representation of warranty, express or implied, is made as to its accuracy, completeness or correctness. All such information and opinions are subject to change without notice. The report is prepared solely for informational purpose and does not constitute an offer document or solicitation of offer to buy or sell or subscribe for securities or other financial instruments for the clients. Nothing in this report constitutes investment, legal, accounting and tax advice or a representation that any investment or strategy is suitable or appropriate to your specific circumstances. The securities discussed and opinions expressed in this report may not be suitable for all investors, who must make their own investment decisions, based on their own investment objectives, financial positions and needs of specific recipient. Certain transactions -including those involving futures, options, another derivative products as well as non-investment grade securities - involve substantial risk and are not suitable for all investors.Each recipient of this document should make such investigations as it deems necessary to arrive at an independent evaluation of an investment in the securities of companies referred to in this document (including the merits and risks involved), and should consult his/her/its own advisors to determine the merits and risks of such an investment. Though disseminated to all the customers simultaneously, not all customers may receive this report at the same time. NFAL will not treat recipients as customers by virtue of their receiving this report. Neither the Company, not its directors, employees, agents or representatives shall be liable for any damages whether direct or indirect, incidental, special or consequential including lost revenue or lost profits or lost opportunities that may arise from or in connection with the use of the information/report. The person accessing this information specifically agrees to exempt NFAL or any of its affiliates or employees from, any and all responsibility/liability arising from such misuse and agrees not to hold NFAL or any of its affiliates or employees responsible for any such misuse and further agrees to hold NFAL or any of its affiliates or employees free and harmless from all losses, costs, damages, expenses that may be suffered by the person accessing this information due to any errors and delays.

This report is not directed or intended for distribution to or use by any person or entity resident in a state, country or any jurisdiction, where such distribution, publication, availability or use would be contrary to law, regulation or which would subject NFAL & its group companies to registration or licensing requirements within such jurisdictions.