

Trading Calls

GAIL BUY 18th June 2019

Weekly chart of GAIL reveals that demand is increasing and supply is diminishing. Channel support line from lower levels is displaying trend reversal and creates buying opportunity at current juncture. As of now, stock is taking support from its ascending triangle resistance line on monthly chart which augur well for the Bulls and indicate surge on upside. Apart from this, rising Histogram in MACD daily signals optimism, which further suggest upside move in the counter in coming sessions. BUY GAIL AROUND 308-300, ON DIP 260-270 SL 236(CLOSING BASIS), TARGET 390-445

SBIN BUY 17th June 2019

After contravention sustainability of consolidation chapter between 312 and 246, this script was on track to creation a flag pattern on weekly chart, now it has given breakout of flag pattern. It also maintained its uptrend on the long term chart and is trading well above its short and long term moving averages. The momentum oscillator, RSI is also favors the price pattern. One can accumulate the stock around 335-340 AND ON DIP TOWARDS 305-310 SL 278 (CLOSING BASIS) TGT 398-450.

TATAMOTOR BUY 12th June 2019

Scrip spurted from a low of 163, it showed pullback on upside marked the high of marks and started consolidating there. This pullback rally and consolidation has taken the form of inverted H&S price pattern on an hourly chart where construction of right shoulder is going on. Currently, it is awaiting for the breakout on upside so that it can accelerate buying momentum further. Formation of Bullish Harami on daily time frame of chart suggesting bullish momentum in the scrip. Indicator and oscillator also showing conducive scenario in the coming sessions. So based on the mentioned technical structure we expect that price may see momentum on upside after giving the breakout above 173 and hit our target of 185 & 192 marks. BUY TATA MOTOR @ 168-171 AND ON DIP TOWARDS 162-164 SL- 154 (CLOSING BASIS) TGT- 185, 192

Institutional Turnover

FII	Buy(cr.)	Sell(cr.)	Net(cr.)
24-Jun-19	3,385	3,178	207
Jun-19	77,402	78,840	(1,438)
DII	Buy(cr.)	Sell(cr.)	Net(cr.)
24-Jun-19	3,142	2,157	984
Jun-19	42,189	39,250	2,939

FII DERIVATIVES POSITION FOR 24-June-2019

	Net (Amt. in crs)
INDEX FUTURES	317
INDEX OPTIONS	(102)
STOCK FUTURES	(121)
STOCK OPTIONS	(48)

Market	Value	% Change
SGX Nifty (at 8.00 am IST)	11711.00	-0.04%

Nifty Key Levels

Support	S1: 11670	S2 : 11640
Resistance	R1 : 11750	R2 : 11770

Market Outlook

Benchmark Index faced resistance from daily pivot point placed around 11750 levels and traded lower throughout the yesterday in a tight range of 11750-11675 with negative sentiments. Nifty is trading near its major simple moving average 50 DMA which is rising and placed around 11689 levels suggests strong uptrend intact in mid-term. An important trend line is standing near 11840 marks; whereas a decisive trade only above 11840 will confirm short term trend reversal and it can On other side a close below the strong support of 50 DMA (11689) will push prices lower towards 11600 marks.

Sectoral Performance (%)

	1 Day	1 Week	1 Month	1 Year
Auto Components	(0.97)	(1.33)	(4.08)	(23.78)
Automobiles	(0.25)	(0.96)	(8.33)	(28.36)
Chemicals	(0.05)	(1.56)	(3.07)	2.15
Construction & Engineering	0.25	0.52	(2.15)	5.34
Construction Materials	(0.23)	2.41	(5.13)	12.16
Diversified Financial Services	(0.26)	0.44	(1.24)	2.50
Electrical Equipment	0.46	1.26	1.10	4.74
Energy	(1.51)	(0.88)	(5.18)	9.33
Financials	(0.16)	0.90	(1.75)	8.47
Health Care	0.08	(0.36)	(4.97)	(12.37)
Household Durables	(0.72)	(0.55)	1.54	(7.30)
Household & Personal Products	(0.12)	(1.94)	(0.14)	2.06
Information Technology	0.34	0.29	6.07	19.10
Metals/Mining/Minerals	(0.94)	0.28	(1.72)	(17.02)
Telecom	(0.28)	(0.09)	(3.52)	(14.24)
Utilities	(0.20)	1.01	2.67	(1.20)

Participant wise Open Interest In Equities Derivative (no. of contracts)

Long Position				
	DII	FII	Pro	Other
Future Index	40875	173527	15973	175681
Future Stock	20072	847431	195308	917279
Option Index Call	24397	205400	117691	538893
Option Index Put	80485	360283	135638	466837
Option Stock Call	0	17487	72441	345430
Option Stock Put	0	20128	60525	158896

Short Position				
	DII	FII	Pro	Other
Future Index	23331	127154	47223	208348
Future Stock	945359	609329	129699	295703
Option Index Call	0	74522	244473	567386
Option Index Put	0	137216	210252	695775
Option Stock Call	1848	23753	158619	251138
Option Stock Put	0	15963	75264	148322

High ES & High PS Stock Maintaining Strength

BSE Code	NSE CODE	1 Month Return %
531344	CONCOR	13.9
532777	NAUKRI	13.5
524200	VINATORGA	11.7
500800	TATAGLOBAL	10.8
532129	HEXAWARE	10.7
500490	BAJAJHLDNG	9.7
500790	NESTLEIND	9.5
532898	POWERGRID	9.3
532540	TCS	9.2
500472	SKFINDIA	8.4

High ES & Low PS Stock Showing Strength

BSE Code	NSE CODE	1 Month Return %
533150	GODREJPROP	14.4
500266	MAHSCOOTER	13.9
505355	NESCO	13.9
500049	BEL	13.7
531266	VSTILLERS	11.7
532313	MAHLIFE	8.7
512573	AVANTI	8.0
532814	INDIANB	3.8
500407	SWARAJENG	3.7
500710	AKZOINDIA	2.6

Low ES & Low PS Stock Maintaining Weakness

BSE Code	NSE CODE	1 Month Return %
502742	SINTEX	(62.9)
532617	JETAIRWAYS	(53.8)
500111	RELCAPITAL	(46.6)
500219	JISLJAEQS	(46.4)
532939	RPOWER	(40.7)
511072	DHFL	(33.1)
511431	VAKRANSOFT	(26.6)
514034	JBFIN	(25.3)
531737	GREENCREST	(23.6)
500106	IFCI	(23.3)

Low ES & High PS Stock Showing Weakness

BSE Code	NSE CODE	1 Month Return %
517380	IGARASHI	(22.5)
532296	GLENMARK	(19.1)
532612	INDOCO	(18.3)
509496	ITDCM	(15.4)
502865	FORBESGOK	(15.2)
501425	BBTC	(14.3)
500288	MOREPENLAB	(12.2)
500302	PEL	(11.0)
523457	LINDEINDIA	(11.0)
532482	GRANULES	(10.3)

* ES- Earning Score is average of EM (Earning Momentum defined as relative performance in terms of operating profit growth) and EQ (Earning Quality defined as relative balance sheet strength in terms of debt and working capital)

* PS- Price Score is of a company is relative price performance in multiple time-frame

Analysis shown here is only for companies with market cap more than Rs 1,000 Cr.

STDC / R25 Open Calls for 25-06-2019 (3)

STDC (3)									
No	Date	Type	Buy/Sell	Stock	Entry1	Entry2	SL	Tgt 1	Tgt 2
1	18-Jun-19	STDC	BUY	GAIL	304	265	236	390	455
2	17-Jun-19	STDC	BUY	SBIN	337.5	307.5	278	398	450
3	12-Jun-19	STDC	BUY	TATAMOTOR	169.5	163	154	185	192

VIEW

Market ended on negative note after volatile session due to mixed bag of geopolitical & domestic news and soaring crude oil prices dented investor's sentiment. Mild bounce back likely but broader market will remain into consolidation mode. We expect volatility to increase in the coming week. We suggest to avoid aggressive position on either side and keep protective profit with directional moves that market will take in coming sessions.

NIFTY-

- Weekly chart reveals the formation of lower top and lower bottom which taken the form of Falling channel
- After forming the falling channel, Index has found resistance to the double top in the zone of 11840-11880
- Weekly RSI remains neutral while not showing any divergence against the price where as weekly MACD looks stays positive, it is seen narrowing its trajectory sharply.
- Broader technical set up looks remain challenging unless Nifty gives a decisive close above 11850 -11900 zone where we can expect falling channel breakout
- From there it can surge higher till 12050 and 12200 levels.
- Principal of polarity showing support near 11590 followed by 11480 levels.

CHART ANALYSIS



SUPPORT & RESISTANCE LEVELS

	NIFTY LEVEL	JUSTIFICATION
Resistance 2	12050	Previous swing high
Resistance 1	11900	Peak of Falling channel
Close	11724	
Support 1	11590	Key Base
Support 2	11480	Previous swing low

Banknifty Weekly

24-Jun-19

VIEW

After opening with a negative session, Banknifty fell to make a weekly low of 30220 on Tuesday. However it has found a strong support at 50 DMA (currently is at 30234) and gave a smart pullback to 30824 on Thursday. At the end of the week the index closed with a net gain of 0.05% over its previous week's close.

OBSERVATIONS:

- 1) Banknifty has found a strong support at 50 DMA.
- 2) Stochastic reached at oversold zone.
- 2) Bank Nifty is currently trading above 50, 100 & 200 DMAs.
- 3) The gap in Banknifty is still left in between 29559 & 30111.

According to the above observations it can be concluded that the short term and medium term trend of Banknifty is looking positive as the index is trading above all the major DMAs (50, 100, 200). Current profit booking process is also likely to complete very soon as the Stochastic has reached at the oversold zone.

In the extreme short term 50 DMA (currently is at 30234) would act as a strong support of Banknifty and a successive breach of this level is likely to take the index further lower to fill the gap of (29560 - 30111) which was formed on 20th May 2019. However we should use this gap-filling activity as a fresh buying opportunity in the index.

CHART ANALYSIS



SUPPORT & RESISTANCE LEVELS

RESISTANCE/SUPPORT	BANKNIFTY LEVEL
Resistance 2	31420
Resistance 1	31050
Close	30628
Support 1	30234
Support 2	29550

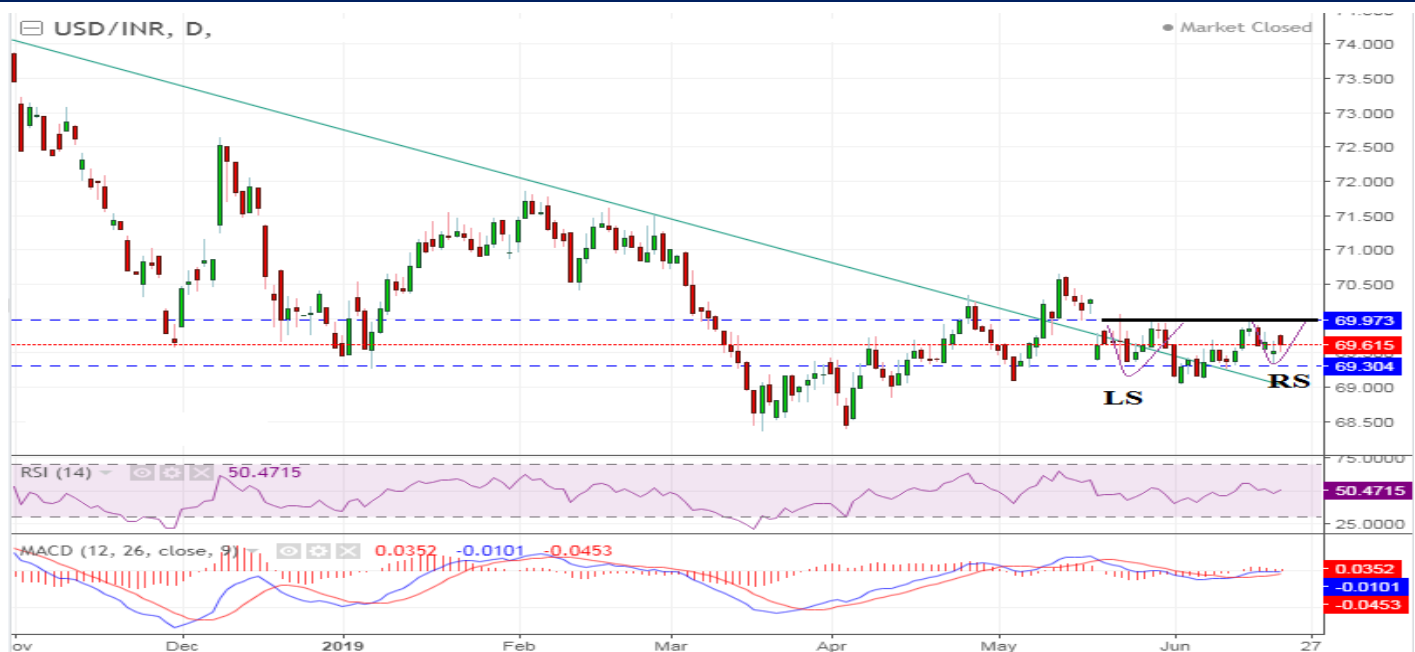
VIEW

Elevated crude oil prices on renewed geopolitical tensions as Iran destroyed US drone by a missile, which was allegedly flowing over Iranian territory suggest negative sentiment for Indian currency. While dovish monetary policy from the FED and ECB has turned positive in the last rate cut cycle. QE and lower rates led to an appreciation in the domestic currency against the dollar

TECHNICAL FACTORS-

- a) From last few days, pair has been forming Inverted H&S on daily chart suggest bearishness for Rupee
- b) Breakout is expected above 70 on closing basis from where it can extend up to 70.65 and 71 levels.
- c) Moreover, bullish crossover in MACD also lending support to the price action of pair
- d) A failure to sustain beyond the level would lead to strength for rupee and pair can drag to its lower level till 69.30 and 68.40 marks

CHART ANALYSIS



SUPPORT & RESISTANCE LEVELS

USDINR LEVEL

Resistance 2	70.65
Resistance 1	70
Close	69.61
Support 1	69
Support 2	68.40

STDC : Long / BUY

18-Jun-19

BSE Code	532155
NSE Symbol	GAIL
52wk Range H/L	398.80/296
Mkt Capital (Rs Cr)	69467.46
Av.Cash Volume(,000)	31955.03
Open Interest	NA

Buy Price	308-300 & 260-270
Stop Loss	236
Target Price1	390
Target Price2	455
Upside in Tgt1	26%-30%
Upside in Tgt2	47%-51%

Technical Chart



STDC BUY GAIL @ 308-300 AND ON DIP TOWARDS 260-270 SL 236 (CLOSING BASIS) TGT 390-445

Weekly chart of GAIL reveals that demand is increasing and supply is diminishing. Channel support line from lower levels is displaying trend reversal and creates buying opportunity at current juncture. As of now, stock is taking support from its ascending triangle resistance line on monthly chart which augur well for the Bulls and indicate surge on upside. Apart from this, rising Histogram in MACD daily signals optimism, which further suggest upside move in the counter in coming sessions. BUY GAIL AROUND 308-300, ON DIP 260-270 SL 236(CLOSING BASIS), TARGET 390-445

STDC : Long / BUY

17-Jun-19

BSE Code	500112
NSE Symbol	SBIN
52wk Range H/L	364/247.65
Mkt Capital (Rs Cr)	301428.75
Av.Cash Volume(,000)	129614.36
Open Interest	NA

Buy Price	335-340 & 305-310
Stop Loss	278
Target Price1	398
Target Price2	450
Upside in Tgt1	18%-33%
Upside in Tgt2	34%-45%

Technical Chart



STDC BUY SBIN @ 335-340 AND ON DIP TOWARDS 305-310 SL 278 (CLOSING BASIS) TGT 398-450

After contravention sustainability of consolidation chapter between 312 and 246, this script was on track to creation a flag pattern on weekly chart, now it has given breakout of flag pattern. It also maintained its uptrend on the long term chart and is trading well above its short and long term moving averages. The momentum oscillator, RSI is also favors the price pattern. One can accumulate the stock around 335-340 AND ON DIP TOWARDS 305-310 SL 278 (CLOSING BASIS) TGT 398-450.

STDC : Long / BUY

12-Jun-19

BSE Code	500570
NSE Symbol	TATAMOTOR
52wk Range H/L	313.5/141.9
Mkt Capital (Rs Cr)	48796
Av.Cash Volume(,000)	12818738
Open Interest	NA

Buy Price	168-171 & 162-164
Stop Loss	154
Target Price1	185
Target Price2	192
Upside in Tgt1	11%-18%
Upside in Tgt2	22%-30%

Technical Chart

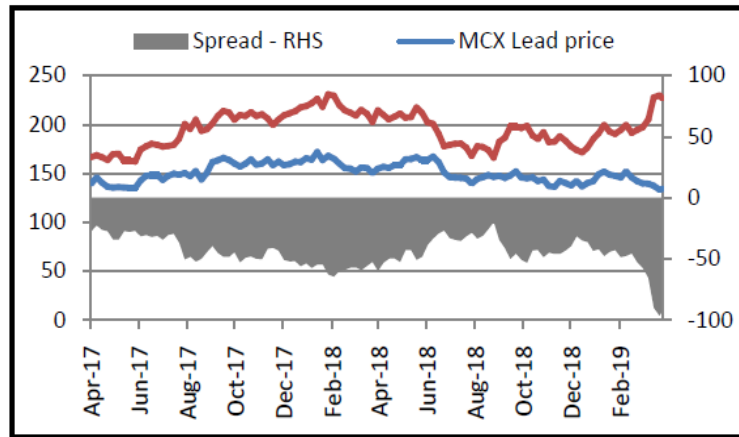


STDC BUY TATA MOTOR @ 168-171 AND ON DIP TOWARDS 162-164 SL- 154 (CLOSING BASIS) TGT- 185, 192

Scrip spurted from a low of 163, it showed pullback on upside marked the high of marks and started consolidating there. This pullback rally and consolidation has taken the form of inverted H&S price pattern on an hourly chart where construction of right shoulder is going on. Currently, it is awaiting for the breakout on upside so that it can accelerate buying momentum further. Formation of Bullish Harami on daily time frame of chart suggesting bullish momentum in the scrip. Indicator and oscillator also showing conducive scenario in the coming sessions. So based on the mentioned technical structure we expect that price may see momentum on upside after giving the breakout above 173 and hit our target of 185 & 192 marks. **BUY TATA MOTOR @ 168-171 AND ON DIP TOWARDS 162-164 SL- 154 (CLOSING BASIS) TGT- 185, 192**

Spread Call View – Sell Zinc Buy Lead

The spread of Zinc and Lead have tested the record low of -96 levels and currently the spread is trading at -92. We believe the spread to narrow towards -75 to -70 levels in the months to come.

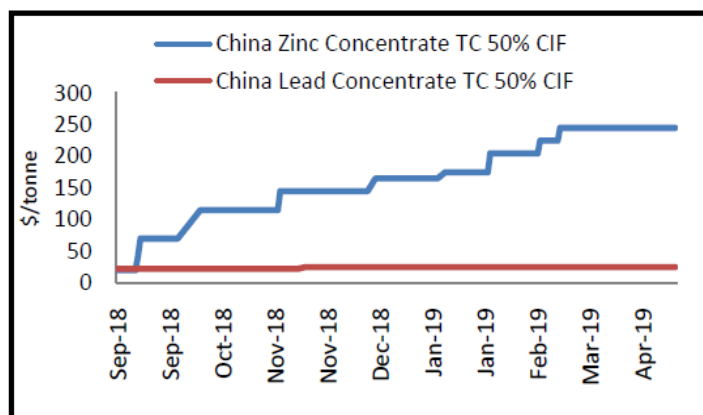


Source: Bloomberg, Narnolia Research

MCX Zinc prices have rallied by almost 23 percent since the start of this year. Zinc has been the best performer among the base metal complex in 2019 during the first quarter of 2019. While Lead prices has remained unchanged during the first quarter of 2019. We believe Lead prices to stay strong over Zinc prices in future.

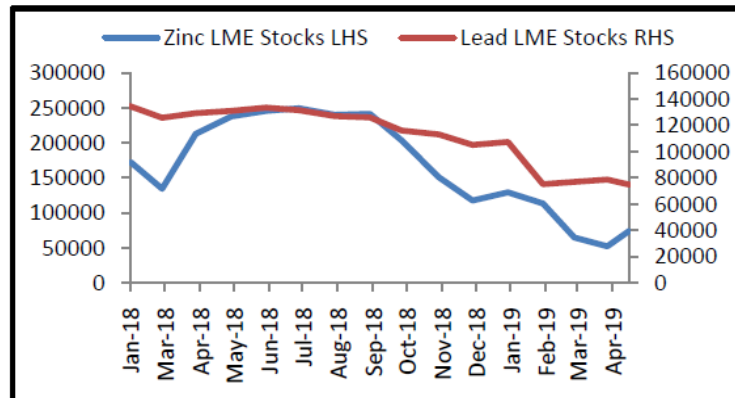
Zinc Treatment and refining charges has risen towards \$265 per tonne, up from \$20 per tonne in Sept 2018 which indicates the smelter get a higher margin towards refined production indicating the output to keep rising in coming months. On the other hand, Lead refining charges have remained unchanged helping us to forecast that no major production increase is expected in near future. This also points towards rise in zinc production will be higher as compared to lead production.

Treatment and refining charges



Source: Bloomberg, Narnolia Research

LME inventories of both Zinc and Lead are currently near decade low levels. Although, a big inflows in zinc inventories this week have fanned expectation that supply tightness will end soon. LME Zinc inventories jumped to 73,700 tonnes, rising from the record low of 50,000 tonnes in January 2019. LME Zinc stocks have increased by 11 percent since February 2019. While Lead stocks has remained unchanged during the same period.



Source: Bloomberg, Narnolia Research

Zinc mine supply is expected to come online during the second half of 2019 as smelters earn a higher margin and with prices up 20% during the year we believe supply of zinc is expected to increase in the months to come. On the other hand, Lead supply is expected to rise by 4.1% in 2019 however the tightness in availability of lead concentrate may provide constraint to the global lead output.

Spread Call View – Sell Zinc Buy Lead

The spread of Zinc and Lead have tested the record low of -96 and currently the spread is trading at -91. We believe the spread to narrow towards -75 to -70 levels in the months to come.

Various Possible Outcome of Spread Call:

1. Zinc price to fall, Lead price rise
2. Both Lead and zinc prices fall, but zinc to fall more
3. Lead prices unchanged, while zinc prices fall
4. Both Lead and zinc prices rise, but lead outperform
5. Lead rise, while zinc prices unchanged

Conclusion:

“Higher Zinc refining charges, expectation of new zinc mine supply, rising LME Zinc stocks and tighter lead market makes us to come to a conclusion to actively short zinc and buy lead.” Therefore, we expect the ratio Sell Zinc and Buy Lead to become narrow towards -75 to -70. At present the ratio is trading at -92 as on 18th April 2019.

Narnolia Financial Advisors Ltd. is a SEBI registered Research Analyst having SEBI Registration No. INH300006500. The Company/Analyst (s) does/do not have any holding in the stocks discussed but these stocks may have been recommended to clients in the past. Clients of Narnolia Financial Advisors Ltd. may be holding aforesaid stocks.

The stocks recommended are based on our analysis which is based on information obtained from public sources and sources believed to be reliable, but no independent verification has been made nor is its accuracy or completeness guaranteed.

Disclosures: Narnolia Financial Advisors Ltd. (NFAL) (Formerly Microsec Capital Ltd.) is a SEBI Registered Research Analyst having registration no. INH300006500. NFAL is engaged in the business of providing Stock Broking, Depository Participant, Merchant Banking, Portfolio Management & distribution of various financial products. Details of associate entities of NFAL is available on the website at www.narnolia.com

No penalties have been levied on NFAL by any Regulatory/Statutory authority. NFAL, its associates, Research Analyst or their relative may have financial interest in the subject company. NFAL and/or its associates and/or Research Analyst may have beneficial ownership of 1% or more securities in the subject company at the end of the month immediately preceding the date of publication of the Research Report. NFAL and its associate company(ies), their directors and Research Analyst and their relatives may; (a) from time to time, have a long or short position in, act as principal in, and buy or sell the securities or derivatives thereof of companies mentioned herein. (b) be engaged in any other transaction involving such securities and earn brokerage or other compensation or act as a market maker in the financial instruments of the company(ies) discussed herein or act as an advisor or lender/borrower to such company(ies) or may have any other potential conflict of interests with respect to any recommendation and other related information and opinions.; however the same shall have no bearing whatsoever on the specific recommendations made by the analyst(s), as the recommendations made by the analyst(s) are completely independent of the views of the associates of NFAL even though there might exist an inherent conflict of interest in some of the stocks mentioned in the research report. Research Analyst may have served as director/officer, etc. in the subject company in the last 12 month period. NFAL and/or its associates may have received compensation from the subject company in the past 12 months. In the last 12 months period ending on the last day of the month immediately preceding the date of publication of this research report, NFAL or any of its associates may have: a) managed or co-managed public offering of securities from subject company of this research report, b) received compensation for investment banking or merchant banking or brokerage services from subject company of this research report, c) received compensation for products or services other than investment banking or merchant banking or brokerage services from the subject company of this research report. d) Subject Company may have been a client of NFAL or its associates during 12 months preceding the date of distribution of the research report. NFAL and its associates have not received any compensation or other benefits from the Subject Company or third party in connection with the research report. NFAL and / or its affiliates may do and seek to do business including Investment Banking with companies covered in the research reports. As a result, the recipients of this report should be aware that NFAL may have a potential conflict of interest that may affect the objectivity of this report. Compensation of Research Analysts is not based on any specific Merchant Banking, Investment Banking or Brokerage service transactions. Research Analyst's views on Subject Company may vary based on Fundamental research and Technical Research. Proprietary trading desk of NFAL or its associates maintains arm's length distance with Research Team as all the activities are segregated from NFAL research activity and therefore it can have an independent view with regards to subject company for which Research Team have expressed their views.

Analyst Certification The views expressed in this research report accurately reflect the personal views of the analyst(s) about the subject securities or issues, and no part of the compensation of the research analyst(s) was, is, or will be directly or indirectly related to the specific recommendations and views expressed by research analyst(s) in this report.

Disclosure of Interest Statement-

Analyst's ownership of the stocks mentioned in the Report	NIL
---	-----

A graph of daily closing prices of securities is available at www.nseindia.com, www.bseindia.com.

Correspondence Office Address: Arch Waterfront, 5th Floor, Block GP, Saltlake, Sector 5, Kolkata 700 091; Tel No.: 033-40541700; www.narnolia.com.

Registered Office Address: Marble Arch, Office 201, 2nd Floor, 236B, AJC Bose Road, Kolkata 700 020; Tel No.: 033-4050 1500; www.narnolia.com

Compliance Officer: Manish Kr Agarwal, Email Id: mkagarwal@narnolia.com, Contact No.:033-40541700.

Registration details of Company: Narnolia Financial Advisors Ltd. (NFAL): SEBI Stock Broker Registration: INZ000166737 (NSE/BSE/MSEI); NSDL/CDSL: IN-DP-380-2018; Research Analyst: INH300006500, Merchant Banking: (Registration No.: INM000010791), PMS: (Registration No.: INP000002304), AMFI Registered Mutual Fund distributor: ARN 3087

Registration Details of Group entities: G. Raj & Company Consultants Ltd (G RAJ)-BSE Broker INZ260010731; NSDL DP: IN-DP-NSDL-371-2014 || Narnolia Commerze Limited (Formerly Microsec Commerze Ltd.)-MCX/NCDEX Commodities Broker: INZ000051636 || NarnoliaVelox Advisory Ltd.- SEBI Registered PMS: INP000005109 || Eastwind Capital Advisors Pvt Ltd. (EASTWIND)-SEBI Registered Investment Adviser: INA300005439 || Narnolia Insurance Brokers Limited (Formerly Microsec Insurance Brokers Ltd.)-IRDA Licensed Direct Insurance Broker (Life & Non-Life) Certificate No. 134, License No. DB046/02 || Narnolia Securities Ltd. (NSL)-AMFI Registered Mutual Fund distributor: ARN 20558, PFRDA NPS POP: 27092018 || Narnolia Capital Advisors Pvt. Ltd. - RBI Registered NBFC:B.05.02568.

Disclaimer:

This report has been prepared by Narnolia Financial Advisors Ltd. (NFAL) and is meant for sole use by the recipient and not for public circulation. The report and information contained herein is strictly confidential and may not be altered in any way, transmitted to, copied or distributed, in part or in whole, to any other person or to the media or reproduced in any form, without prior written consent of NFAL. The report is based on the facts, figures and information that are considered true, correct, reliable and accurate. The intent of this report is not recommendatory in nature. The information is obtained from publicly available media or other sources believed to be reliable. Such information has not been independently verified and no guaranty, representation of warranty, express or implied, is made as to its accuracy, completeness or correctness. All such information and opinions are subject to change without notice. The report is prepared solely for informational purpose and does not constitute an offer document or solicitation of offer to buy or sell or subscribe for securities or other financial instruments for the clients. Nothing in this report constitutes investment, legal, accounting and tax advice or a representation that any investment or strategy is suitable or appropriate to your specific circumstances. The securities discussed and opinions expressed in this report may not be suitable for all investors, who must make their own investment decisions, based on their own investment objectives, financial positions and needs of specific recipient. Certain transactions -including those involving futures, options, another derivative products as well as non-investment grade securities - involve substantial risk and are not suitable for all investors. Each recipient of this document should make such investigations as it deems necessary to arrive at an independent evaluation of an investment in the securities of companies referred to in this document (including the merits and risks involved), and should consult his/her/its own advisors to determine the merits and risks of such an investment. Though disseminated to all the customers simultaneously, not all customers may receive this report at the same time. NFAL will not treat recipients as customers by virtue of their receiving this report. Neither the Company, nor its directors, employees, agents or representatives shall be liable for any damages whether direct or indirect, incidental, special or consequential including lost revenue or lost profits or lost opportunities that may arise from or in connection with the use of the information/report. The person accessing this information specifically agrees to exempt NFAL or any of its affiliates or employees from, any and all responsibility/liability arising from such misuse and agrees not to hold NFAL or any of its affiliates or employees responsible for any such misuse and further agrees to hold NFAL or any of its affiliates or employees free and harmless from all losses, costs, damages, expenses that may be suffered by the person accessing this information due to any errors and delays.

This report is not directed or intended for distribution to or use by any person or entity resident in a state, country or any jurisdiction, where such distribution, publication, availability or use would be contrary to law, regulation or which would subject NFAL & its group companies to registration or licensing requirements within such jurisdictions.