

5-Feb-2020

Movement Of The Day

- ❑ Nifty opened positive at 12005.85 and made a low of 11953.35. From there it moved towards the high of 12098.15 and closed positive at 12090.25
- ❑ Positive Sector in Nifty: FMCG, AUTO, REALTY, FIN SERVICE, METAL, PVT BANK, IT, PHARMA and PSU BANK.
- ❑ Negative Sector in Nifty: MEDIA.
- ❑ India VIX closed negative by 2.76% at 13.98.

Key Derivative Highlights

- ❑ Maximum open interest in Call: 12100 levels (3,536,250) (06 Feb expiry)
- ❑ Maximum open interest in Put: 12000 levels (3,113,475) (06 Feb expiry)
- ❑ Highest change in OI for call: 12000 levels (-1,217,100) (06 Feb expiry)
- ❑ Highest change in OI for Put: 12000 levels (+2,165,850) (06 Feb expiry)
- ❑ Nifty futures open interest: 1,46,65,050
- ❑ Nifty futures change in OI: +8,48,550
- ❑ Nifty VWAP : 12,024.84
- ❑ Bank Nifty futures open interest: 11,67,480
- ❑ Bank Nifty futures change in OI: 1,47,940
- ❑ Nifty futures closed with the discount of 0.75 points.

Stocks In News

- ❑ **YESBANK (+8.58%)**: Yes Bank share price jumps ahead of extraordinary general meeting - The bank has been trying to raise funds but is yet to decide on an investor.
- ❑ **BPCL (+4.82%)**: Russia's largest oil producer Rosneft keen to bid for BPCL - The government is selling all of its 53 per cent stake in BPCL in the country's biggest privatisation plan.
- ❑ **ZEEL (-6.38%)**: Zee Entertainment slips amid reports govt to probe company's books.
- ❑ **TATAMOTORS (+10.68%)**: Jaguar sales grew by 9.6% YoY, while Land Rover sales increased marginally by 0.2% MoM in January 2020.
- ❑ **TATASTEEL (+5.75%) and JSWSTEEL (+4.95%)**: Broader buying in METAL Stocks.

Nifty Most Active Call

Index Option	Price INR	No. of Contract in lacs VOL	OI
12100-06Feb	32.00	8,15,164	35,36,250
12000-06Feb	97.55	8,13,681	12,17,700
12050-06Feb	57.10	6,64,081	8,77,650
12150-06Feb	14.10	4,29,693	12,60,150
12200-06Feb	5.75	3,94,920	23,65,050

Market

Todays Closing

Market	Value	Points	% Change
Sensex	41,129.56	340.18	0.83%
Nifty	12,090.25	110.60	0.94%
Nifty Bank	31,013.85	327.15	1.10%

Advance / Decline

Group	Nifty Bank	Nifty 50	Sensex
Advance	10	36	21
Decline	2	14	9
Unchanged	0	0	0

Instrument Wise Volume and Turnover

Derivative Volumes (INR in Crores)

Exchange	No. of Contracts	Turnover (crs)
Index Futures	3,34,864	24,891
Stock Futures	8,68,776	59,229
Index Options	2,53,76,469	18,14,135.46
Stock Options	8,62,493	62,012
F&O Total	2,74,42,602	19,60,267.68

Top Nifty - 50 Index Gainers

Symbol	LTP	% Change
TATAMOTORS	183.40	10.68
YESBANK	37.95	8.58
TATASTEEL	477.90	5.75
JSWSTEEL	271.15	4.95
BPCL	501.55	4.82

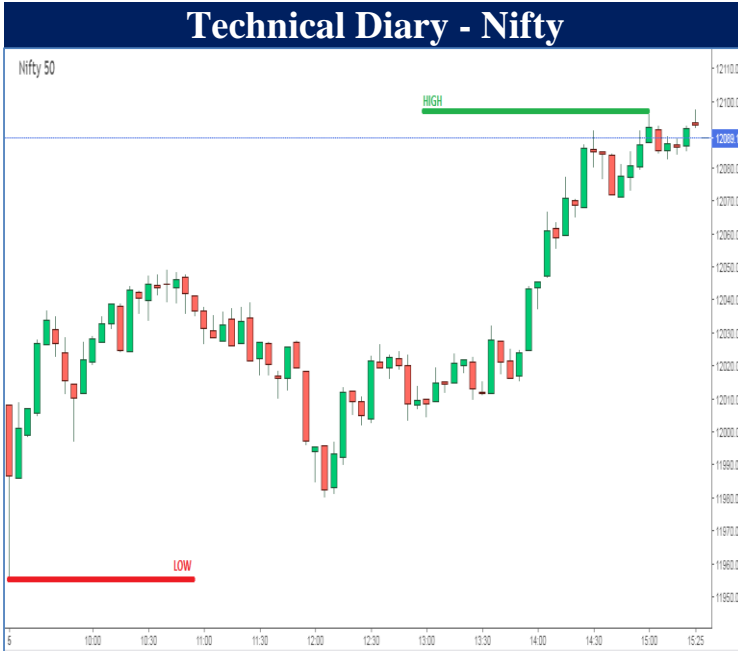
Top Nifty - 50 Index Losers

Symbol	LTP	% Change
ZEEL	228.90	-6.38
HEROMOTOCO	2374.00	-3.58
DRREDDY	3142.00	-3.08
POWERGRID	189.90	-2.29
MARUTI	7050.00	-2.08

Nifty Most Active Put

Index Option	Price INR	No. of Contract in lacs VOL	OI
12000-06Feb	8.15	7,26,585	31,13,475
11900-06Feb	3.15	6,72,059	25,34,850
11950-06Feb	4.55	4,59,334	13,17,225
11800-06Feb	1.90	3,27,978	23,49,225
12050-06Feb	18.15	2,62,152	17,06,775

Technical Diary - Nifty



- Nifty opened positive and made a low. From there it moved towards the high and closed positive.
- It ended with a positive bias.
- It closed **110.60** points above previous day close.
- It took Resistance & Support at 12098.15 & 11953.35 respectively during the day.

Technical Diary- Sensex



- Sensex opened positive and made a low. From there it moved towards the high and closed positive.
- It ended with a positive bias.
- It closed **346.01** points above previous day close.
- It took Resistance & Support at 41177.00 & 40703.32 respectively during the day.

Technical Diary - Bank Nifty



- Nifty Bank opened positive and made a low. From there it started moving towards the high and closed positive.
- It traded with a positive bias.
- It closed **327.15** points above its previous day close.
- It took Resistance & Support at 31065.85 & 30630.85 respectively.

Technical Diary- India VIX



- India VIX closed negative by **2.76%** at 13.98
- It took Resistance & Support at 14.52 & 13.81 respectively.

Narnolia Financial Advisors Ltd. is a SEBI registered Research Analyst having SEBI Registration No. INH300006500. The Company/Analyst (s) does/do not have any holding in the stocks discussed but these stocks may have been recommended to clients in the past. Clients of Narnolia Financial Advisors Ltd. may be holding aforesaid stocks.

The stocks recommended are based on our analysis which is based on information obtained from public sources and sources believed to be reliable, but no independent verification has been made nor is its accuracy or completeness guaranteed.

Disclosures: Narnolia Financial Advisors Ltd. (NFAL) (Formerly Microsec Capital Ltd.) is a SEBI Registered Research Analyst having registration no. INH300006500. NFAL is engaged in the business of providing Stock Broking, Depository Participant, Merchant Banking, Portfolio Management & distribution of various financial products. Details of associate entities of NFAL is available on the website at www.narnolia.com

No penalties have been levied on NFAL by any Regulatory/Statutory authority. NFAL, its associates, Research Analyst or their relative may have financial interest in the subject company. NFAL and/or its associates and/or Research Analyst may have beneficial ownership of 1% or more securities in the subject company at the end of the month immediately preceding the date of publication of the Research Report. NFAL and its associate company(ies), their directors and Research Analyst and their relatives may; (a) from time to time, have a long or short position in, act as principal in, and buy or sell the securities or derivatives thereof of companies mentioned herein. (b) be engaged in any other transaction involving such securities and earn brokerage or other compensation or act as a market maker in the financial instruments of the company(ies) discussed herein or act as an advisor or lender/borrower to such company(ies) or may have any other potential conflict of interests with respect to any recommendation and other related information and opinions.; however the same shall have no bearing whatsoever on the specific recommendations made by the analyst(s), as the recommendations made by the analyst(s) are completely independent of the views of the associates of NFAL even though there might exist an inherent conflict of interest in some of the stocks mentioned in the research report. Research Analyst may have served as director/officer, etc. in the subject company in the last 12 month period. NFAL and/or its associates may have received compensation from the subject company in the past 12 months. In the last 12 months period ending on the last day of the month immediately preceding the date of publication of this research report, NFAL or any of its associates may have: a) managed or co-managed public offering of securities from subject company of this research report, b) received compensation for investment banking or merchant banking or brokerage services from subject company of this research report, c) received compensation for products or services other than investment banking or merchant banking or brokerage services from the subject company of this research report. d) Subject Company may have been a client of NFAL or its associates during 12 months preceding the date of distribution of the research report. NFAL and its associates have not received any compensation or other benefits from the Subject Company or third party in connection with the research report. NFAL and / or its affiliates may do and seek to do business including Investment Banking with companies covered in the research reports. As a result, the recipients of this report should be aware that NFAL may have a potential conflict of interest that may affect the objectivity of this report. Compensation of Research Analysts is not based on any specific Merchant Banking, Investment Banking or Brokerage service transactions. Research Analyst's views on Subject Company may vary based on Fundamental research and Technical Research. Proprietary trading desk of NFAL or its associates maintains arm's length distance with Research Team as all the activities are segregated from NFAL research activity and therefore it can have an independent view with regards to subject company for which Research Team have expressed their views.

Analyst Certification The views expressed in this research report accurately reflect the personal views of the analyst(s) about the subject securities or issues, and no part of the compensation of the research analyst(s) was, is, or will be directly or indirectly related to the specific recommendations and views expressed by research analyst(s) in this report.

Disclosure of Interest Statement-

Analyst's ownership of the stocks mentioned in the Report

NIL

A graph of daily closing prices of securities is available at www.nseindia.com, www.bseindia.com.

Correspondence Office Address: Arch Waterfront, 5th Floor, Block GP, Saltlake, Sector 5, Kolkata 700 091; Tel No.: 033-40541700; www.narnolia.com.

Registered Office Address: Marble Arch, Office 201, 2nd Floor, 236B, AIC Bose Road, Kolkata 700 020; Tel No.: 033-4050 1500; www.narnolia.com

Compliance Officer: Manish Kr Agarwal, Email Id: mkagarwal@narnolia.com, Contact No.: 033-40541700.

Registration details of Company: Narnolia Financial Advisors Ltd. (NFAL): SEBI Stock Broker Registration: INZ000166737 (NSE/BSE/MSEI); NSDL/CDSL: IN-DP-380-2018; Research Analyst: INH300006500, Merchant Banking: (Registration No.: INM000010791), PMS: (Registration No.: INP000002304), AMFI Registered Mutual Fund distributor: ARN 3087

Registration Details of Group entities: G. Raj & Company Consultants Ltd (G RAJ)-BSE Broker INZ260010731; NSDL DP: IN-DP-NSDL-371-2014 || Narnolia Commerze Limited (Formerly Microsec Commerze Ltd.)-MCX/NCDEX Commodities Broker: INZ000051636 || NarnoliaVeloX Advisory Ltd.- SEBI Registered PMS: INP000005109 || Eastwind Capital Advisors Pvt Ltd. (EASTWIND)-SEBI Registered Investment Adviser: INA300005439 || Narnolia Insurance Brokers Limited (Formerly Microsec Insurance Brokers Ltd.)-IRDA Licensed Direct Insurance Broker (Life & Non-Life) Certificate No. 134, License No. DB046/02 || Narnolia Securities Ltd. (NSL)-AMFI Registered Mutual Fund distributor: ARN 20558, PFRDA NPS POP: 27092018 || Narnolia Capital Advisors Pvt. Ltd. - RBI Registered NBFC:B.05.02568.

Disclaimer:

This report has been prepared by Narnolia Financial Advisors Ltd. (NFAL) and is meant for sole use by the recipient and not for public circulation. The report and information contained herein is strictly confidential and may not be altered in any way, transmitted to, copied or distributed, in part or in whole, to any other person or to the media or reproduced in any form, without prior written consent of NFAL. The report is based on the facts, figures and information that are considered true, correct, reliable and accurate. The intent of this report is not recommendatory in nature. The information is obtained from publicly available media or other sources believed to be reliable. Such information has not been independently verified and no guaranty, representation of warranty, express or implied, is made as to its accuracy, completeness or correctness. All such information and opinions are subject to change without notice. The report is prepared solely for informational purpose and does not constitute an offer document or solicitation of offer to buy or sell or subscribe for securities or other financial instruments for the clients. Nothing in this report constitutes investment, legal, accounting and tax advice or a representation that any investment or strategy is suitable or appropriate to your specific circumstances. The securities discussed and opinions expressed in this report may not be suitable for all investors, who must make their own investment decisions, based on their own investment objectives, financial positions and needs of specific recipient. Certain transactions -including those involving futures, options, another derivative products as well as non-investment grade securities - involve substantial risk and are not suitable for all investors. Each recipient of this document should make such investigations as it deems necessary to arrive at an independent evaluation of an investment in the securities of companies referred to in this document (including the merits and risks involved), and should consult his/her/its own advisors to determine the merits and risks of such an investment. Though disseminated to all the customers simultaneously, not all customers may receive this report at the same time. NFAL will not treat recipients as customers by virtue of their receiving this report. Neither the Company, nor its directors, employees, agents or representatives shall be liable for any damages whether direct or indirect, incidental, special or consequential including lost revenue or lost profits or lost opportunities that may arise from or in connection with the use of the information/report. The person accessing this information specifically agrees to exempt NFAL or any of its affiliates or employees from, any and all responsibility/liability arising from such misuse and agrees not to hold NFAL or any of its affiliates or employees responsible for any such misuse and further agrees to hold NFAL or any of its affiliates or employees free and harmless from all losses, costs, damages, expenses that may be suffered by the person accessing this information due to any errors and delays.

This report is not directed or intended for distribution to or use by any person or entity resident in a state, country or any jurisdiction, where such distribution, publication, availability or use would be contrary to law, regulation or which would subject NFAL & its group companies to registration or licensing requirements within such jurisdictions.