

Trading Calls

KOTAKBANK BUY 28-Aug-20

On daily chart, the stock has taken the support of the rising trend line and 20, 50, 100 & 200 days SMA. Stock also gave breakout from its consolidation zone on daily chart along with the ascending triangle pattern breakout of the medium bull trend on chart indicating a pullback on upside. Formation of bullish engulfing on weekly chart also indicates a positive move. The momentum indicators and oscillators are very well in the buy mode on a weekly scale which hints that bulls are still having an upper hand. Based on the above technical structure, one can take a long position in the stock around 1420-1440 and on a dip towards 1380-1360 with a stop loss of 1265 on closing basis for the target of 1560 and 1620.

BHARTIARTL - R10 BUY 24-Aug-20

BHARTIARTL- After getting a strong support at 200 DMA, the stock gave a smart pullback rally yesterday. A 'Piercing Line' was also formed on the daily chart. So some more upward movement is very likely in the near future.

GODREJCP - R10 BUY 24-Aug-20

Short term correction seems to be over in the stock and bulls are likely to take the charge again. The bullish candlestick pattern on August 24, 2020 near 50 and 20 days moving average suggests that bulls have entered in a counter at consolidation levels. Further, the falling trend line breakout on Friday's trading session with decent volume is providing an additional signal that short term rally might not be ruled out in the coming days. The short term moving averages ribbon is developing a bullish curve after a recent correction and prices are trading above all its major short term and medium-term moving averages. Traders can initiate long positions at 680-687 and on any dip till 661-337 for a gain of 780 and 810 with stop loss of 618 on closing basis.

APEX BUY 21-Aug-20

Stock is trading with a higher top and higher bottom cycle on the daily chart and recently it has breached the neckline of the ascending triangle pattern on the weekly chart. The fresh leg of the rally can be expected in the coming days where bulls are likely to take the rally forward. The weekly RSI has started in a bullish zone after crossing above 9 EMA's. A positive crossover in momentum indicators and rising ADX suggests that bulls are likely to have upper hands in the short term. Traders can initiate buying around 277-280 and dip towards 267-270 with a stop loss of 245 for the target of 330 and 340 levels.

NELCO - R10 BUY 19-Aug-20

The stock is in uptrend as it is forming higher tops and higher bottoms on the monthly chart. After week's negative to sideways consolidation, stock is showing a resumption of the uptrend. Prices have given trendline breakout with increase in volume on the daily chart which support bullish sentiment. The weekly strength indicator RSI and the momentum indicator stochastic both are in positive territory which supports upside momentum to continue in near term. Prices are sustaining well above its significant moving averages which also support bullish sentiments ahead. Thus, the stock can be bought at current levels around 214-217 and dip towards 207-210 with a stop loss below 199 on closing basis for the target of 240 and 250 levels.

Market	Value	% Change
SGX Nifty (at 8.30 am IST)	11432.80	0.64%

Nifty Key Levels For The Week

Support	S1: 11300	S2 : 11250
Resistance	R1 : 11550	R2 : 11500

Market Outlook

Clash between India & China and anticipation of contraction in GDP spoil the party of Bulls on d-street after reaching near our mentioned target of 11800 mark which we mentioned in our weekly report. Nifty registered Long red candle on daily chart and appears to have decisively reversed its course of direction by erasing the last six sessions of laborious gains put up by the bulls. Now follow-through weakness is expected to confirm this reversal pattern. As per change in polarity, upside breakout intermediate resistance stands at 11450-11500 zone. If nifty will fail to defend 11300 (near 20 DMA) then one may expect further weakness in the short term and the next lower levels to be watched at 11150-11100.

FII DERIVATIVES POSITION FOR 31-Aug-2020

	Net (Amt. in crs)
INDEX FUTURES	(4,068)
INDEX OPTIONS	(216)
STOCK FUTURES	(1,344)
STOCK OPTIONS	(4)

Institutional Turnover

	FII	Buy(cr.)	Sell(cr.)	Net(cr.)
31-Aug-20		16,290	19,686	(3,395)
Aug-20		131,435	115,685	15,750
	DII	Buy(cr.)	Sell(cr.)	Net(cr.)
31-Aug-20		5,761	5,080	681
Aug-20		77,600	88,646	(11,047)

Sectoral Performance (%)

	1 Day	1 Week	1 Month	1 Year
Auto Components	(4.43)	(4.16)	9.83	7.11
Automobiles	(3.14)	(1.07)	7.84	14.93
Chemicals	(4.05)	(4.47)	7.23	22.28
Construction & Engineering	(3.55)	(2.78)	8.44	(17.88)
Construction Materials	(4.51)	(6.52)	(3.09)	0.59
Diversified Financial Services	(4.48)	(1.01)	3.81	(8.50)
Electrical Equipment	(3.95)	(3.27)	6.48	(8.90)
Energy	(1.71)	(1.08)	0.27	33.16
Financials	(3.42)	1.15	6.92	(11.14)
Health Care	(4.56)	(4.36)	0.84	44.28
Household Durables	(3.59)	(2.16)	6.18	5.14
Household & Personal Products	(1.90)	(3.09)	(2.94)	7.04
Information Technology	(0.37)	(0.61)	(0.80)	8.12
Metals/Mining/Minerals	(3.45)	(3.40)	12.09	2.73
Telecom	(1.53)	(1.34)	(2.93)	42.43
Utilities	(3.82)	(5.87)	6.71	(6.35)

Participant wise Open Interest In Equities Derivative (no. of contracts)

	Long Position			
	DII	FII	Pro	Other
Future Index	9142	80807	25687	103015
Future Stock	28724	707500	154278	542679
Option Index Call	267	172833	219541	778461
Option Index Put	41601	277257	218869	625394
Option Stock Call	0	15032	64157	309821
Option Stock Put	0	17137	114158	82841

	Short Position			
	DII	FII	Pro	Other
Future Index	35781	58440	21251	103179
Future Stock	728800	503058	60445	140878
Option Index Call	0	128706	366813	675583
Option Index Put	0	155722	236689	770710
Option Stock Call	1675	19372	182372	185591
Option Stock Put	0	9492	52931	151713

High ES & High PS Stock Maintaining Strength

BSE Code	NSE CODE	1 Month Return %
532659	IDFC	41.6
506197	BLISSGVS	35.5
500477	ASHOKLEY	32.0
502986	VTL	32.0
500850	INDHOTEL	30.9
504973	TUBEINVEST	29.3
532488	DIVISLAB	28.3
500493	BHARATFORG	27.1
533155	JUBLFOOD	24.2
532848	DELTACORP	24.2

High ES & Low PS Stock Showing Strength

BSE Code	NSE CODE	1 Month Return %
531162	EMAMILTD	48.1
532809	FSL	31.7
532700	ENIL	30.7
500288	MOREPENLAB	30.5
524742	CAPPL	26.7
532642	JINDALSWHL	25.4
532648	YESBANK	22.3
532374	STRTECH	22.2
514043	HIMATSEIDE	22.1
532175	CYIENT	19.8

Low ES & Low PS Stock Maintaining Weakness

BSE Code	NSE CODE	1 Month Return %
500109	MRPL	(16.3)
500390	RELINFRA	(7.5)
530965	IOC	(7.3)
500110	CHENNPETRO	(4.7)
500111	RELCAPITAL	(3.8)
532939	RPOWER	(3.7)
535789	IBULHSGFIN	(2.6)
532331	AJANTPHARM	(0.4)
524804	AUROPHARMA	(0.3)
535754	ORIENTCEM	(0.2)

Low ES & High PS Stock Showing Weakness

BSE Code	NSE CODE	1 Month Return %
500380	JKLAKSHMI	(12.4)
500104	HINDPETRO	(11.6)
500547	BPCL	(10.1)
530007	JKTYRE	(9.5)
511431	VAKRANSOFT	(6.8)
500290	MRF	(6.2)
507717	DHANUKA	(4.6)
501455	GREAVESCOT	(3.6)
531500	RAJESHEXPO	(3.4)
511218	SRTRANSFIN	(3.1)

* ES- Earning Score is average of EM (Earning Momentum defined as relative performance in terms of operating profit growth) and EQ (Earning Quality defined as relative balance sheet strength in terms of debt and working capital)

* PS- Price Score is of a company is relative price performance in multiple time-frame

Analysis shown here is only for companies with market cap more than Rs 1,000 Cr.

STDC / R25 Open Calls for 01-09-2020

STDC (09)

No	Date	Type	Buy/Sell	Stock	Entry1	Entry2	SL	Tgt 1	Tgt 2
1	28-Aug-20	STDC	BUY	KOTAKBANK	1430	1370	1265	1560	1620
2	21-Aug-20	STDC	BUY	APEX	278.5	268.5	245	330	340
3	13-Aug-20	STDC	BUY	PRAJIND	68	62	55	85	92
4	07-Aug-20	STDC	BUY	CENTURYTEX	321.5	292.5	254	356	400
5	03-Aug-20	STDC	BUY	BANDHANBANK	315.5	291.5	272	365	385
6	15-Jul-20	STDC	BUY	CANBANK	101.5	94.5	87	124	134
7	08-Jul-20	STDC	BUY	ITC	195.5	174.5	161	220	232
8	06-Jul-20	STDC	BUY	BANKBARODA	51.5	44.5	40.5	64	74
9	03-Jul-20	STDC	BUY	PNB	35.5	31.5	28.5	45	52

R-10 (07)

No	Date	Type	Buy/Sell	Stock	Entry1	Entry2	SL	Tgt 1	Tgt 2
1	24-Aug-20	R-10	BUY	GODREJCP	683.5	664	618	780	810
2	24-Aug-20	R-10	BUY	BHARTIARTL	522.5	507.5	470	580	610
3	19-Aug-20	R-10	BUY	NELCO	215.5	208.5	199	240	250
4	18-Aug-20	R-10	BUY	ONGC	80.5	72	69	92	97
5	17-Aug-20	R-10	BUY	POLYCAB	890	855	835	1000	1040
6	13-Aug-20	R-10	BUY	RADICO	392.5	378.5	360	430	445
7	28-Jul-20	R-10	BUY	SBIN	186	174	167	208	222

VIEW

In line with the projections of previous week analysis, indices inched higher, leaving behind all major short and long term moving averages by a good distance. After failing repeatedly many times near the psychological levels of 11500, finally Nifty gave a decisive breakout and witnessed a shift of base on the upside, implying a bullish undertone. There are higher chances that the market will face wide range consolidation as no sign of weakness is being seen in indices except the overbought nature of indicators. We suggest to chase the momentum in a very cautious way while guarding the profit at higher levels.

Technical Outlook-

- a) Nifty is not showing any sign of exhaustion and gave a decisive breakout above the 11500 mark while forming Bullish belt hold pattern on the weekly chart.
- b) At the same time, Nifty also started trading above its rising channel which suggests the uptrend is intact
- c) While overbought levels of RSI and profit booking in the broader market are matter of concern
- d) We mentioned in our previous weekly note, "Stabilizing move above 11460 - 11500 zone can facilitate up move towards 11660 and 11800 levels," this is happening and we maintain the same.
- e) Shifting range higher, the levels of 11500 and 11360-11310 (near 20 DMA) are likely to act as in immediate floor.

CHART ANALYSIS



SUPPORT & RESISTANCE LEVELS

	NIFTY LEVEL	JUSTIFICATION
Resistance 2	11800	Previous Swing high
Resistance 1	11680	Recent swing high
Close	11647	
Support 1	11500	Psychological levels
Support 2	11315	20 DMA

VIEW

Banknifty gave a sharp up move throughout last week and closed the week with a net gain of 10% over its previous week's close. The buying was witnessed across the board. However Axis Bank, State Bank, ICICI bank and Kotak Bank were on the buyers' radar.

OBSERVATIONS:

Currently following things are witnessing on the daily chart of Banknifty.

- 1) The index has given a channel pattern bullish breakout above 23200.
- 2) The index is approaching around its near-term resistance of 200 DMA.

By analysing the above observations it can be concluded that Banknifty has given a channel pattern bullish breakout above 23200 and the pattern target of the index is 25700. On the upward path the index may find an immediate resistance at 200 DMA (currently is at 25116). Therefore we recommend holding long position by placing a trailing stop loss at 23200.

CHART ANALYSIS



SUPPORT & RESISTANCE LEVELS

RESISTANCE/SUPPORT	BANKNIFTY LEVEL
Resistance 2	25700
Resistance 1	25120
Close	24523
Support 1	23560
Support 2	23200

VIEW

In line with our analysis of the last few weeks, Rupee gave a sharp breakdown from its descending triangle pattern below our mentioned support level of 74.45 mark and touched its five month high of 73.12 against the US dollar. **It also achieved our mentioned target of 73.50 mark which we have been reiterating in our past weekly notes.** Smooth supply of dollars on the back of FED's policy intention to keep interest rate at bottom and keep system afflux with liquidity for an extended period of time. Besides this, capital inflows in equity and debts predominantly weighed on trading sentiment. As of now only the intervention of RBI can provide support for the pair otherwise will make new swing low in the coming sessions.

TECHNICAL FACTORS-

- a) Breakdown below descending triangle pattern and lower bollinger band suggest further correction.
- b) On a weekly chart, pair has formed a long bearish candle indicating weakness in the pair.
- c) Daily strength indicator and momentum oscillator stochastic both have turned down below the reference line thus representing weakness in the pair.
- d) On sustaining below 73 mark, it can extend down till 72.40 from where it can see a pullback
- e) However, if it trades above 73.50 mark then it is likely to retrace the fall and test 74 and 74.45 mark on upside.

CHART ANALYSIS



SUPPORT & RESISTANCE LEVELS

USDINR LEVEL

Resistance 2	74.45
Resistance 1	73.5
Close	73.11
Support 1	73
Support 2	72.40

STDC : Long / BUY

28-Aug-20

BSE Code	500247
NSE Symbol	KOTAKBANK
52wk Range H/L	1739/1000
Mkt Capital (Rs Cr)	290458
Av.Cash Volume(00000)	31.31

Buy Price	1440-1420 & 1380-
Stop Loss	1265
Target Price1	1560
Target Price2	1520
Upside in Tgt1	15.00%
Upside in Tgt2	25.00%



STDC : BUY KOTAKBANK @ 1440-1420 AND DIP TOWARDS 1380-1360 SL-1265 TGT- 1560 1620

On daily chart, the stock has taken the support of the rising trend line and 20, 50, 100 & 200 days SMA. Stock also gave breakout from its consolidation zone on daily chart along with the ascending triangle pattern breakout of the medium bull trend on chart indicating a pullback on upside. Formation of bullish engulfing on weekly chart also indicates a positive move. The momentum indicators and oscillators are very well in the buy mode on a weekly scale which hints that bulls are still having an upper hand. Based on the above technical structure, one can take a long position in the stock around 1420-1440 and on a dip towards 1380-1360 with a stop loss of 1265 on closing basis for the target of 1560 and 1620.

R-10 : Long / BUY

24-Aug-20

BSE Code	532454
NSE Symbol	BHARTIARTL
52wk Range H/L	361.75/612
Mkt Capital (Rs Cr)	288380.76
Av.Cash Volume(00000)	18418.5

Buy Price	520-525 & 505-510
Stop Loss	470
Target Price1	580
Target Price2	610
Upside in Tgt1	12.60%
Upside in Tgt2	18.40%

Technical Chart



BUY BHARTIARTL AROUND 520-525 AND 505-510 SL 470 (CLOSING) TARGET 580/610

BHARTIARTL- After getting a strong support at 200 DMA, the stock gave a smart pullback rally yesterday. A 'Pearing Line' was also formed on the daily chart. So some more upward movement is very likely in the near future.

R-10 : Long / BUY

24-Aug-20

BSE Code	532424
NSE Symbol	GODREJCP
52wk Range H/L	771/425
Mkt Capital (Rs Cr)	70065
Av.Cash Volume(00000)	10.12

Buy Price	680-687 & 661-667
Stop Loss	618
Target Price1	780
Target Price2	810
Upside in Tgt1	15.00%
Upside in Tgt2	25.00%

Technical Chart



R-10: BUY GODREJCP @ 680-687 AND ON DIP TOWARDS 661-667 SL-618 TGT-780 810

Short term correction seems to be over in the stock and bulls are likely to take the charge again. The bullish candlestick pattern on August 24, 2020 near 50 and 20 days moving average suggests that bulls have entered in a counter at consolidation levels. Further, the falling trend line breakout on Friday's trading session with decent volume is providing an additional signal that short term rally might not be ruled out in the coming days. The short term moving averages ribbon is developing a bullish curve after a recent correction and prices are trading above all its major short term and medium-term moving averages. Traders can initiate long positions at 680-687 and on any dip till 661-337 for a gain of 780 and 810 with stop loss of 618 on closing basis.

STDC : Long / BUY

21-Aug-20

BSE Code	540692
NSE Symbol	APEX
52wk Range H/L	444/132
Mkt Capital (Rs Cr)	876.09
Av.Cash Volume(00000)	1.13

Buy Price	280-277 & 267-270
Stop Loss	245
Target Price1	330
Target Price2	340
Upside in Tgt1	15.00%
Upside in Tgt2	25.00%

Technical Chart



STDC- BUY APEX FROZEN @ 280-277 AND ON DIP TOWARDS 267-270 SL- 245 (CL BS) TGT- 330 340

Stock is trading with a higher top and higher bottom cycle on the daily chart and recently it has breached the neckline of the ascending triangle pattern on the weekly chart. The fresh leg of the rally can be expected in the coming days where bulls are likely to take the rally forward. The weekly RSI has started in a bullish zone after crossing above 9 EMA's. A positive crossover in momentum indicators and rising ADX suggests that bulls are likely to have upper hands in the short term. Traders can initiate buying around 277-280 and dip towards 267-270 with a stop loss of 245 for the target of 330 and 340 levels.

R-10 : Long / BUY

19-Aug-20

BSE Code	504112
NSE Symbol	NELCO
52wk Range H/L	284/170
Mkt Capital (Rs Cr)	490.71
Av.Cash Volume(00000)	23.09

Buy Price	214-217 & 207-210
Stop Loss	199
Target Price1	240
Target Price2	250
Upside in Tgt1	15.00%
Upside in Tgt2	25.00%

Technical Chart



R10- BUY NELCO @ 214-217 AND DIP TOWARDS 207-210 SL-199 TGT- 240 250

The stock is in uptrend as it is forming higher tops and higher bottoms on the monthly chart. After week's negative to sideways consolidation, stock is showing a resumption of the uptrend. Prices have given trendline breakout with increase in volume on the daily chart which support bullish sentiment. The weekly strength indicator RSI and the momentum indicator stochastic both are in positive territory which supports upside momentum to continue in near term. Prices are sustaining well above its significant moving averages which also support bullish sentiments ahead. Thus, the stock can be bought at current levels around 214-217 and dip towards 207-210 with a stop loss below 199 on closing basis for the target of 240 and 250 levels.

R10 : Long / BUY

18-Aug-20

BSE Code	500312
NSE Symbol	ONGC
52wk Range H/L	50/149
Mkt Capital (Rs Cr)	29240
Av.Cash Volume(00000)	163

Buy Price	71.50-72.50&80-81
Stop Loss	69
Target Price1	92
Target Price2	97
Upside in Tgt1	14.00%
Upside in Tgt2	20.00%

Technical Chart



R-10 BUY ONGC AROUND 81-80 AND 72.50-71.50 SL 69(CLOSING) TARGET 92/97

ONGC corrected heavily and formed bottom near 50 marks few weeks back. The stock has formed specific harmonic pattern ABCD and its D point concludes near 50. As per the post pattern implication of this pattern this script should retrace towards higher levels. As we put Fibonacci retracement with one point lower to 'C', 50% retracement levels come near 100. At the same time previous swing bottom comes near 110 marks, which also supportive for prices. Furthermore, momentum oscillators are conducive for prices too. Looking at above mentioned rationale, we suggest buying to buy ONGC around 80 for targets of 50% retracement mark standing around 100.

R-10 : Long / BUY

17-Aug-20

BSE Code	542652
NSE Symbol	POLYCAB
52wk Range H/L	1180/525
Mkt Capital (Rs Cr)	2292
Av.Cash Volume(00000)	2.77

Buy Price	885-895 & 850-860
Stop Loss	835
Target Price1	1000
Target Price2	1040
Upside in Tgt1	15.00%
Upside in Tgt2	25.00%

Technical Chart



R-10: BUY POLYCAB @ 895-885 & ON DIP TOWARDS 850-860 SL- 835 TGT- 1000, 1040

On the daily chart, stock price has decisively broken out from its Ascending triangle breakout and sustaining above the same. On the daily and weekly chart the stocks has witnessed a shift of trend to the upward forming base with congestion. The daily strength indicator ADX also moving above 20 with +DMI which is diverging from - DMI supports upside momentum to continue in the near term. Stock prices are sustaining well above all its significant moving averages which supports bullish sentiment ahead. Buy POLYCAB around 885-895 and on dip towards 850-860 with stop loss of 835 for the target of 1000 and 1040.

R-10 : Long / BUY

13-Aug-20

BSE Code	532497
NSE Symbol	RADICO
52wk Range H/L	439/220
Mkt Capital (Rs Cr)	5358
Av.Cash Volume(00000)	1.7

Buy Price	390-395 & 377-380
Stop Loss	360
Target Price1	430
Target Price2	445
Upside in Tgt1	15.00%
Upside in Tgt2	25.00%

Technical Chart



R-10 BUY RADICO @ 390-395 AND ON DIP TOWARDS 377-380 SL-360 (CL BS) TGT- 430 445

The stock on the weekly chart has witnessed a trendline breakout and looks positively poised to trade higher. On daily chart, scrip has given a fresh breakout above the consolidation zone along with marginally higher volumes, which suggest next upswing in the prices. The key technical indicators on the near term time frame are in buy mode. The stock has the potential to continue the current up move and will test higher levels. Hence, looking at the current structure we recommend buying in the stock around 163-166 and on a dip towards 154-157 with a stop loss of 143 on closing basis for the target of 184 and 192 levels.

STDC : Long / BUY

13-Aug-20

BSE Code	522205
NSE Symbol	PRAJIND
52wk Range H/L	129/43
Mkt Capital (Rs Cr)	1260
Av.Cash Volume(00000)	2.64

Buy Price	69-67 & 61-63
Stop Loss	55
Target Price1	85
Target Price2	92
Upside in Tgt1	15.00%
Upside in Tgt2	25.00%

Technical Chart



STDC BUY PRAJIND @ 67-69 AND ON DIP TOWARDS 61-63 SL- 55 (CL BS) TGT- 85 92

Following a decline in March, stock hit a low of 43. Subsequently, it rallied back to a high of 72. Since then, the stock has been in sideways range consolidating gains. From last three months, stock has been forming a strong base near 55-58 zone. Few days back stock has given a trendline breakout with good momentum and volume. Bullish crossover in MACD and sustainability of RSI above 60 mark indicate upside move in near term. Traders can accumulate the stock at 67-69 and dip towards 61-63 for the upside target of 85 and 92 with a stop loss of 55 on closing basis.

STDC : Long / BUY

7-Aug-20

BSE Code	500040
NSE Symbol	CENTURYTEX
52wk Range H/L	656.90/218.60
Mkt Capital (Rs Cr)	3600.13
Av.Cash Volume(,000)	2304.5
Open Interest	

Buy Price	321 & 292.5
Stop Loss	254
Target Price1	356
Target Price2	400
Upside in Tgt1	16.00%
Upside in Tgt2	30.00%

Technical Chart



BUY CENTURYTEX IN 319-323 RANGE & 290-295 RANGE SL 254 (closing basis) TGT 356, 400

The stock has given a bullish breakout above 320. A golden cross has also formed in between 50 & 100 DMAs. So some short term up move is very likely in the stock. Therefore we recommend initiating fresh long position in the stock for the target price of 356 and then 400.

STDC : Long / BUY

3-Aug-20

BSE Code	541153
NSE Symbol	BANDHANBNK
52wk Range H/L	152-650
Mkt Capital (Rs Cr)	46448
Av.Cash Volume(Lakhs)	200

Buy Price	313-316&290-293
Stop Loss	272
Target Price1	365
Target Price2	385
Upside in Tgt1	16.00%
Upside in Tgt2	22.00%



STDC BUY BANDHANBNK AROUND 316-313 AND 290-293 SL 272 TARGET 365/385

Bandhan Bank is trading above crucial support standing around 275 marks with positive sentiments. This stock is trading higher after making a bottom near 200 levels in the last month. At the same time crucial support trend line is also supportive to the counter near 270-280 zone indicates higher probability of short term bottoming out scenario near 280 levels. Overall this script is running in rising channel pattern and upper trend line is standing around 385 marks. Relative Strength Index is trading above 50 is also adding support to positive momentum. Looking at above technical rationale, we suggest buying Bandhan Bank around 313-316 and lower around 290-293 keeping a stop loss of 272 on closing basis for higher targets of 365 and it can be extended to 385 levels.

R10 : Long / BUY

28-Jul-20

BSE Code	500112
NSE Symbol	SBIN
52wk Range H/L	373/149
Mkt Capital (Rs Cr)	72000
Av.Cash Volume(00000)	50.75

Buy Price	185-187 & 173-175
Stop Loss	167
Target Price1	208
Target Price2	222
Upside in Tgt1	11.20%
Upside in Tgt2	18.00%

Technical Chart



R10 BUY SBI AROUND 187.50-185.50 AND 173-175 SL 167(CLOSING) 208/222

In last some days, RSI had given a breakout by trading above 50 levels from below and made a high of 78 then after it is trading lower or retracing towards center line placed at 50 levels, this behavior is called as 'RSI PBB' setup. RSI PBB is pull back buy setup which indicates, once RSI turns its tail upside after taking support from zone of 45-55 levels, target is previous swing high of RSI which was 78 or previous swing high of prices. Currently the SBIN is going through this setup and we expect higher price movement towards 208 levels in coming days. At the same time SBI can give a breakout of symmetrical triangle pattern on a close above 197 which can even extend our targets to 220 marks. Looking at above mentioned rationale, we suggest buying SBI for higher targets above 208 levels.

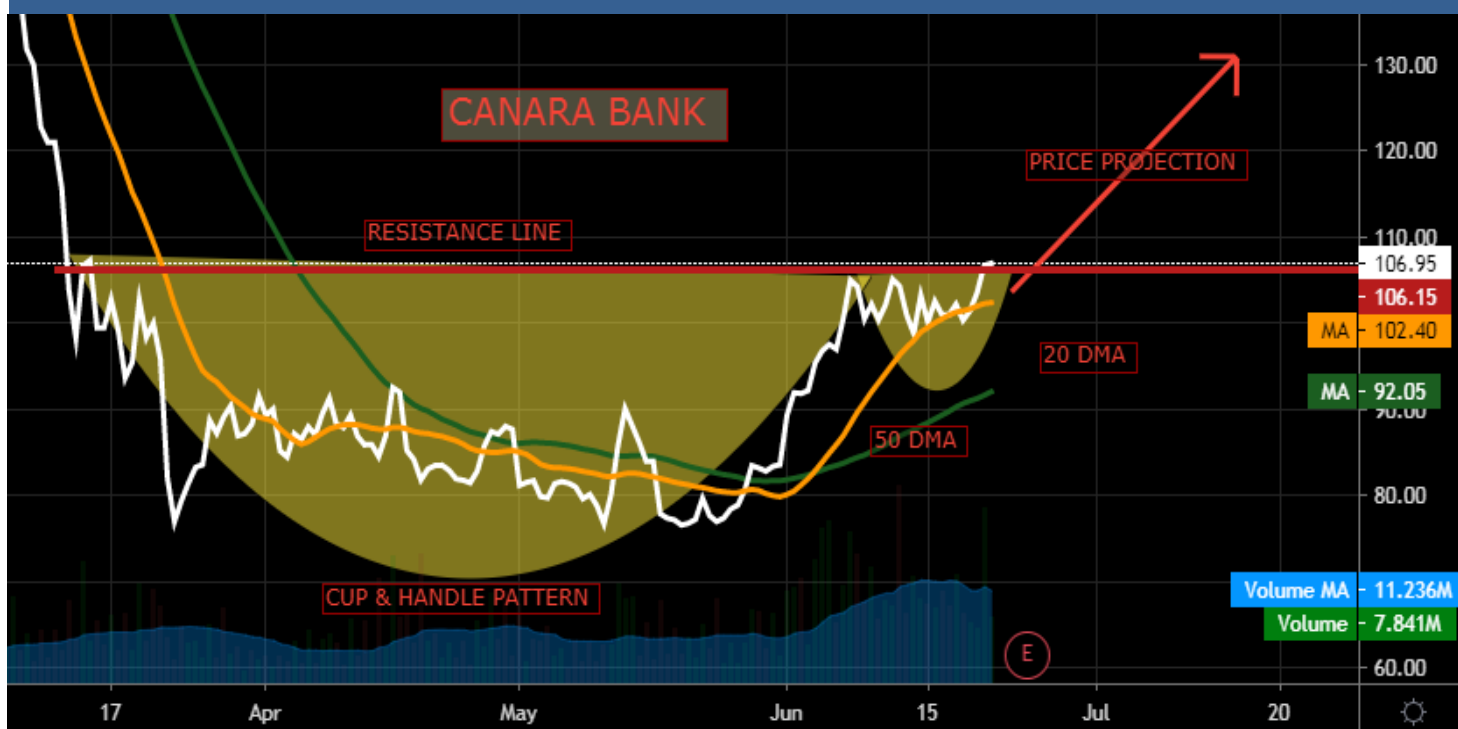
STDC : Long / BUY

15-Jul-20

BSE Code	532483
NSE Symbol	CANBK
52wk Range H/L	296/73
Mkt Capital (Rs Cr)	2160
Av.Cash Volume(00000)	13.35

Buy Price	101-102 & 94-95
Stop Loss	87
Target Price1	124
Target Price2	134
Upside in Tgt1	21.00%
Upside in Tgt2	31.00%

Technical Chart



STDC BUY CANBANK AROUND 102-101 AND 95-94 SL 87 (CLOSING) TARGET 124/134

A Cup & Handle reversal pattern forms after a down trend, and its completion marks a trend reversal to up trend. C & H patterns are an integral part of technical analysis, but successful traders combine these techniques with technical indicators and other forms of technical analysis to maximize their odds of success. In the standard Cup & Handle pattern, we connect the high after Cup with the high created after the handle. A trend line is drawn by connecting these highest points of the two peaks, which is called as "Neckline". This trend line is the most important component of C & H pattern. CANNK has given a rounding bottom breakout around 100 for having targets of 120. At the same time the stock is having a strong resistance line standing around 108 levels indicating strong bullish breakout above these levels. Recent formation of cup and Handle pattern will give a breakout on a close above 108 marks which suggests buying in the stock on dip for higher targets of 135 too. Volume can also add further insight while trading these patterns. Decent volume participation while giving breakout is also giving support to C & H pattern.

STDC : Long / BUY

8-Jul-20

BSE Code	500875
NSE Symbol	ITC
52wk Range H/L	282/134
Mkt Capital (Rs Cr)	173720
Av.Cash Volume(Lakhs)	17

Buy Price	173-176 & 194-197
Stop Loss	161
Target Price1	220
Target Price2	232
Upside in Tgt1	11.00%
Upside in Tgt2	18.00%

Technical Chart



STDC BUY ITC AROUND 197-194 AND 173-176 SL 161 TARGET 220/232

ITC is trading in a rising wedge every since it made a bottom near 134 levels and upper trend line comes near 220 marks. Recently it has given golden crossover and as per the setup prices should move up towards higher pivot points in short-term and mid-term as well. At the same time prices has given trend line breakout on the upside with the expansion of bands on daily chart suggesting a continuation of trend in the direction of breakout. MACD has given bullish crossover and about to move above equilibrium level of zero on daily chart. It has been in a steady uptrend in last few days with higher trough and crests as well. Positive crossover of 20 and 50 dma's suggest firm support on dips. Looking at above rationale traders can accumulate this stock for higher levels.

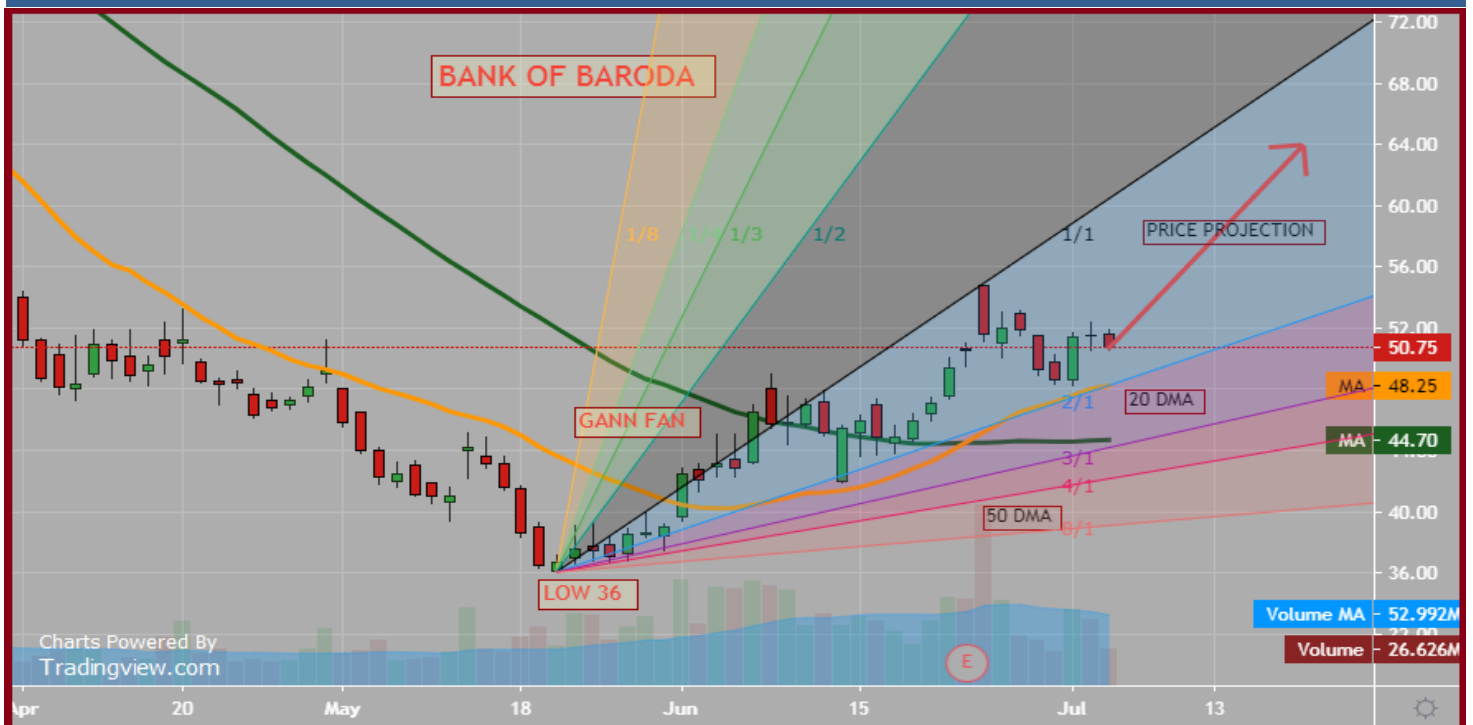
STDC : Long / BUY

6-Jul-20

BSE Code	532134
NSE Symbol	BANKBARODA
52wk Range H/L	36/114
Mkt Capital (Rs Cr)	5604
Av.Cash Volume(00000)	1200

Buy Price	50.50-51.50&44-45
Stop Loss	40.5
Target Price1	64
Target Price2	74
Upside in Tgt1	26.00%
Upside in Tgt2	48.00%

Technical Chart



STDC BUY BANK OF BARODA AROUND 51.50-50.50 & 44-45 SL 40.50(CLOSING) TARGET 64/74

Gann's wheels and Squares are some of the most common applications and form the cornerstone of Gann's work. Gann emphasizes on natural squares acting as a support and resistance in stock prices. In case of Bank of Baroda surprisingly recent swing low is 36 which is exact square of 6 and thereafter it is trading higher by taking support. Not only it has taken support but also it is trading above 49 levels which is (6+1) square as its current market price is 50. Understanding above rationale we can make a buying decision in the stock for higher levels. As per one of the method of Gann suggests 'even to even' cycle of the stock and as per this method, stock has made a bottom of 36 which is square of 6; hence immediate cycle on upside can go (6+2) square which comes to 64. So one can consider profit booking near 64 levels. Gann gave importance to crucial ratio of 5/8 or 62.5 in all of his trading methods. Keeping it mind we have calculated 5/8 levels of entire rise, which comes to 40.60. Entire bullish view negates on a breach of 5/8 levels and in case of BANKBARODA, we will consider 40.60 as a stop loss level. We recommend buying Bank of Baroda (BANKBARODA) around 51.50-50.50 & 44-45 SL 40.50(CLOSING) TARGET 64/74.

STDC : Long / BUY

3-Jul-20

BSE Code	532461
NSE Symbol	PNB
52wk Range H/L	83/26
Mkt Capital (Rs Cr)	3877
Av.Cash Volume(00000)	12.25

Buy Price	35.50-36 & 31.50-32
Stop Loss	28.5
Target Price1	45
Target Price2	52
Upside in Tgt1	25.00%
Upside in Tgt2	44.00%



STDC BUY PNB AROUND 36-35.50 AND 32-31.50 SL 28.50 (CLOSING) TARGET 45/52

This Scrip spurted from a low of 26 after forming cup and handle pattern, it showed pullback on upside marked the high of 35.50 marks and started consolidating there. Currently, it is waiting for another breakout on upside so that it can accelerate buying momentum further. Line of polarity on daily time frame of chart standing around 34 is suggesting bullish momentum in the scrip. Indicators and oscillators are also showing conducive scenario in the coming sessions. So based on the mentioned technical structure one can go long in the scrip around 36 and lower towards 32 for the target of 45/52 marks keeping a stop loss of 28.50.

Narnolia Financial Advisors Ltd. is a SEBI registered Research Analyst having SEBI Registration No. INH300006500. The Company/Analyst (s) does/do not have any holding in the stocks discussed but these stocks may have been recommended to clients in the past. Clients of Narnolia Financial Advisors Ltd. may be holding aforesaid stocks.

The stocks recommended are based on our analysis which is based on information obtained from public sources and sources believed to be reliable, but no independent verification has been made nor is its accuracy or completeness guaranteed.

Disclosures: Narnolia Financial Advisors Ltd. (NFAL) (Formerly Microsec Capital Ltd.) is a SEBI Registered Research Analyst having registration no. INH300006500. NFAL is engaged in the business of providing Stock Broking, Depository Participant, Merchant Banking, Portfolio Management & distribution of various financial products. Details of associate entities of NFAL is available on the website at www.narnolia.com

No penalties have been levied on NFAL by any Regulatory/Statutory authority. NFAL, its associates, Research Analyst or their relative may have financial interest in the subject company. NFAL and/or its associates and/or Research Analyst may have beneficial ownership of 1% or more securities in the subject company at the end of the month immediately preceding the date of publication of the Research Report. NFAL and its associate company(ies), their directors and Research Analyst and their relatives may; (a) from time to time, have a long or short position in, act as principal in, and buy or sell the securities or derivatives thereof of companies mentioned herein. (b) be engaged in any other transaction involving such securities and earn brokerage or other compensation or act as a market maker in the financial instruments of the company(ies) discussed herein or act as an advisor or lender/borrower to such company(ies) or may have any other potential conflict of interests with respect to any recommendation and other related information and opinions.; however the same shall have no bearing whatsoever on the specific recommendations made by the analyst(s), as the recommendations made by the analyst(s) are completely independent of the views of the associates of NFAL even though there might exist an inherent conflict of interest in some of the stocks mentioned in the research report. Research Analyst may have served as director/officer, etc. in the subject company in the last 12 month period. NFAL and/or its associates may have received compensation from the subject company in the past 12 months. In the last 12 months period ending on the last day of the month immediately preceding the date of publication of this research report, NFAL or any of its associates may have: a) managed or co-managed public offering of securities from subject company of this research report, b) received compensation for investment banking or merchant banking or brokerage services from subject company of this research report, c) received compensation for products or services other than investment banking or merchant banking or brokerage services from the subject company of this research report. d) Subject Company may have been a client of NFAL or its associates during 12 months preceding the date of distribution of the research report. NFAL and its associates have not received any compensation or other benefits from the Subject Company or third party in connection with the research report. NFAL and / or its affiliates may do and seek to do business including Investment Banking with companies covered in the research reports. As a result, the recipients of this report should be aware that NFAL may have a potential conflict of interest that may affect the objectivity of this report. Compensation of Research Analysts is not based on any specific Merchant Banking, Investment Banking or Brokerage service transactions. Research Analyst's views on Subject Company may vary based on Fundamental research and Technical Research. Proprietary trading desk of NFAL or its associates maintains arm's length distance with Research Team as all the activities are segregated from NFAL research activity and therefore it can have an independent view with regards to subject company for which Research Team have expressed their views.

Analyst Certification The views expressed in this research report accurately reflect the personal views of the analyst(s) about the subject securities or issues, and no part of the compensation of the research analyst(s) was, is, or will be directly or indirectly related to the specific recommendations and views expressed by research analyst(s) in this report.

Disclosure of Interest Statement-

Analyst's ownership of the stocks mentioned in the Report	NIL
-----------------------------------------------------------	-----

A graph of daily closing prices of securities is available at www.nseindia.com, www.bseindia.com.

Correspondence Office Address: Arch Waterfront, 5th Floor, Block GP, Saltlake, Sector 5, Kolkata 700 091; Tel No.: 033-40541700; www.narnolia.com.

Registered Office Address: Marble Arch, Office 201, 2nd Floor, 236B, AJC Bose Road, Kolkata 700 020; Tel No.: 033-4050 1500; www.narnolia.com

Compliance Officer: Manish Kr Agarwal, Email Id: mkagarwal@narnolia.com, Contact No.:033-40541700.

Registration details of Company: Narnolia Financial Advisors Ltd. (NFAL): SEBI Stock Broker Registration: INZ000166737 (NSE/BSE/MSEI); NSDL/CDSL: IN-DP-380-2018; Research Analyst: INH300006500, Merchant Banking: (Registration No.: INM000010791), PMS: (Registration No.: INP000002304), AMFI Registered Mutual Fund distributor: ARN 3087

Registration Details of Group entities: G. Raj & Company Consultants Ltd (G RAJ)-BSE Broker INZ260010731; NSDL DP: IN-DP-NSDL-371-2014 || Narnolia Commerze Limited (Formerly Microsec Commerze Ltd.)-MCX/NCDEX Commodities Broker: INZ000051636 || NarnoliaVelox Advisory Ltd.- SEBI Registered PMS: INP000005109 || Eastwind Capital Advisors Pvt Ltd. (EASTWIND)-SEBI Registered Investment Adviser: INA300005439 || Narnolia Insurance Brokers Limited (Formerly Microsec Insurance Brokers Ltd.)-IRDA Licensed Direct Insurance Broker (Life & Non-Life) Certificate No. 134, License No. DB046/02 || Narnolia Securities Ltd. (NSL)-AMFI Registered Mutual Fund distributor: ARN 20558, PFRDA NPS POP: 27092018 || Narnolia Capital Advisors Pvt. Ltd. - RBI Registered NBFC:B.05.02568.

Disclaimer:

This report has been prepared by Narnolia Financial Advisors Ltd. (NFAL) and is meant for sole use by the recipient and not for public circulation. The report and information contained herein is strictly confidential and may not be altered in any way, transmitted to, copied or distributed, in part or in whole, to any other person or to the media or reproduced in any form, without prior written consent of NFAL. The report is based on the facts, figures and information that are considered true, correct, reliable and accurate. The intent of this report is not recommendatory in nature. The information is obtained from publicly available media or other sources believed to be reliable. Such information has not been independently verified and no guaranty, representation of warranty, express or implied, is made as to its accuracy, completeness or correctness. All such information and opinions are subject to change without notice. The report is prepared solely for informational purpose and does not constitute an offer document or solicitation of offer to buy or sell or subscribe for securities or other financial instruments for the clients. Nothing in this report constitutes investment, legal, accounting and tax advice or a representation that any investment or strategy is suitable or appropriate to your specific circumstances. The securities discussed and opinions expressed in this report may not be suitable for all investors, who must make their own investment decisions, based on their own investment objectives, financial positions and needs of specific recipient. Certain transactions -including those involving futures, options, another derivative products as well as non-investment grade securities - involve substantial risk and are not suitable for all investors. Each recipient of this document should make such investigations as it deems necessary to arrive at an independent evaluation of an investment in the securities of companies referred to in this document (including the merits and risks involved), and should consult his/her/its own advisors to determine the merits and risks of such an investment. Though disseminated to all the customers simultaneously, not all customers may receive this report at the same time. NFAL will not treat recipients as customers by virtue of their receiving this report. Neither the Company, nor its directors, employees, agents or representatives shall be liable for any damages whether direct or indirect, incidental, special or consequential including lost revenue or lost profits or lost opportunities that may arise from or in connection with the use of the information/report. The person accessing this information specifically agrees to exempt NFAL or any of its affiliates or employees from, any and all responsibility/liability arising from such misuse and agrees not to hold NFAL or any of its affiliates or employees responsible for any such misuse and further agrees to hold NFAL or any of its affiliates or employees free and harmless from all losses, costs, damages, expenses that may be suffered by the person accessing this information due to any errors and delays.

This report is not directed or intended for distribution to or use by any person or entity resident in a state, country or any jurisdiction, where such distribution, publication, availability or use would be contrary to law, regulation or which would subject NFAL & its group companies to registration or licensing requirements within such jurisdictions.