

## Trading Calls

### AUROPHARMA BUY 04-Sep-20

On the daily chart, you will see that the AUROPHARMA has completed a long term correction on 23rd March 2020. Since 23 March 2020, it has been rising in Impulse, which we have shown in the above chart with Elliott wave labeling. After completing Wave 3 on 10 August 2020 at 967.50, it has completed wave 4 on 1st September. Our expectation for wave 5 is that it can go up to 925 or even above it. You are advised to maintain 769 as stop loss on closing basis for the target of wave 5. If we connect the low of 28th July and 1st September, we will find that it has made a double bottom on the daily chart, which is also a bullish sign. Hence we recommend buy between 825-815 and on decline towards 795-785 for the price targets of 888 and 925 with 769 on closing basis as stop loss.

### KOTAKBANK BUY 28-Aug-20

On daily chart, the stock has taken the support of the rising trend line and 20, 50, 100 & 200 days SMA. Stock also gave breakout from its consolidation zone on daily chart along with the ascending triangle pattern breakout of the medium bull trend on chart indicating a pullback on upside. Formation of bullish engulfing on weekly chart also indicates a positive move. The momentum indicators and oscillators are very well in the buy mode on a weekly scale which hints that bulls are still having an upper hand. Based on the above technical structure, one can take a long position in the stock around 1420-1440 and on a dip towards 1380-1360 with a stop loss of 1265 on closing basis for the target of 1560 and 1620.

### BHARTIARTL - R10 BUY 24-Aug-20

BHARTIARTL- After getting a strong support at 200 DMA, the stock gave a smart pullback rally yesterday. A 'Piercing Line' was also formed on the daily chart. So some more upward movement is very likely in the near future.

### GODREJCP - R10 BUY 24-Aug-20

Short term correction seems to be over in the stock and bulls are likely to take the charge again. The bullish candlestick pattern on August 24, 2020 near 50 and 20 days moving average suggests that bulls have entered in a counter at consolidation levels. Further, the falling trend line breakout on Friday's trading session with decent volume is providing an additional signal that short term rally might not be ruled out in the coming days. The short term moving averages ribbon is developing a bullish curve after a recent correction and prices are trading above all its major short term and medium-term moving averages. Traders can initiate long positions at 680-687 and on any dip till 661-337 for a gain of 780 and 810 with stop loss of 618 on closing basis.

### ONGC - R10 BUY 18-Aug-20

ONGC corrected heavily and formed bottom near 50 marks few weeks back. The stock has formed specific harmonic pattern ABCD and its D point concludes near 50. As per the post pattern implication of this pattern this script should retrace towards higher levels. As we put Fibonacci retracement with one point lower to 'C', 50% retracement levels come near 100. At the same time previous swing bottom comes near 110 marks, which also supportive for prices. Furthermore, momentum oscillators are conducive for prices too. Looking at above mentioned rationale, we suggest buying to buy ONGC around 80 for targets of 50% retracement mark standing around 100.

Market	Value	% Change
SGX Nifty (at 8.30 am IST)	11319.00	-0.49%

### Nifty Key Levels For The Week

Support	S1: 11250	S2 : 11200
Resistance	R1 : 11500	R2 : 11550

### Market Outlook

!! Nifty near Line of Parity !!

Although benchmark index has managed to close below 20 DMA, all crucial mid-term (50 DMA) and long-term (200 DMA) moving averages are rising and trading higher which indicates bullish bias is still an integral part of current movement. Nevertheless, Super trend indicator is still in a buy mode having trailing stop loss placed around 11111 suggesting buy on dip strategy will yield better results in the near future.

Last week markets were typical trading in a ABC correction pattern as per the Elliott wave theory; whereas confirmation of correction complete and original trend resumed will come on a daily close above 11460 marks till then one should wait and watch; whereas crucial support lies near line of parity standing near 11250 marks.

### Institutional Turnover

	FII Buy(cr.)	Sell(cr.)	Net(cr.)
04-Sep-20	4,932	6,820	(1,889)
Sep-20	24,144	24,548	(404)
	DII Buy(cr.)	Sell(cr.)	Net(cr.)
04-Sep-20	3,785	4,242	(457)
Sep-20	13,680	15,449	(1,770)

### FII DERIVATIVES POSITION FOR 04-Sep-2020

	Net (Amt. in crs)
INDEX FUTURES	(696)
INDEX OPTIONS	65
STOCK FUTURES	(603)
STOCK OPTIONS	(22)

### Sectoral Performance (%)

	1 Day	1 Week	1 Month	1 Year
Auto Components	(0.94)	(4.36)	8.67	9.94
Automobiles	(0.30)	(0.66)	9.45	22.27
Chemicals	(1.16)	(2.14)	8.98	27.18
Construction & Engineering	(1.98)	(3.92)	7.34	(17.33)
Construction Materials	(1.56)	(4.57)	(2.37)	4.66
Diversified Financial Services	(1.75)	(4.89)	3.66	(7.31)
Electrical Equipment	(1.41)	(2.61)	6.78	(5.48)
Energy	(1.60)	(2.21)	(2.90)	36.09
Financials	(1.82)	(4.91)	5.57	(11.32)
Health Care	(1.49)	(2.66)	0.63	48.21
Household Durables	(0.07)	(1.92)	7.74	7.67
Household & Personal Products	(1.11)	(1.22)	(1.85)	9.87
Information Technology	(1.05)	0.52	1.30	8.90
Metals/Mining/Minerals	(2.55)	(2.94)	11.53	4.68
Telecom	(2.49)	2.36	1.04	49.35
Utilities	(2.19)	(4.60)	5.90	(5.47)

## Participant wise Open Interest In Equities Derivative (no. of contracts)

	Long Position			
	DII	FII	Pro	Other
Future Index	9110	67495	24855	113275
Future Stock	31076	678474	179513	578838
Option Index Call	267	155421	178896	735596
Option Index Put	35166	273406	211576	613554
Option Stock Call	0	21241	73722	447318
Option Stock Put	0	20567	141530	119972

	Short Position			
	DII	FII	Pro	Other
Future Index	28224	58390	18103	110018
Future Stock	725623	515846	66392	160040
Option Index Call	0	105488	288459	676233
Option Index Put	0	157728	204889	771085
Option Stock Call	2507	28549	250590	260635
Option Stock Put	0	13165	76516	192388

## High ES & High PS Stock Maintaining Strength

BSE Code	NSE CODE	1 Month Return %
532659	IDFC	47.7
500477	ASHOKLEY	40.8
500850	INDHOTEL	32.5
532689	PVR	26.7
504973	TUBEINVEST	26.4
505355	NESCO	25.8
532187	INDUSINDBK	25.0
500493	BHARATFORG	24.8
532636	INDIAINFO	24.2
533155	JUBLFOOD	24.2

## High ES & Low PS Stock Showing Strength

BSE Code	NSE CODE	1 Month Return %
531162	EMAMILTD	54.5
532642	JINDALSWHL	27.1
532700	ENIL	26.8
532733	SUNTV	22.3
532374	STRTECH	20.8
524735	HIKAL	19.0
532175	CYIENT	18.5
532648	YESBANK	16.8
522205	PRAJIND	15.9
500480	CUMMINSIND	15.8

## Low ES & Low PS Stock Maintaining Weakness

BSE Code	NSE CODE	1 Month Return %
500109	MRPL	(13.7)
532331	AJANTPHARM	(10.2)
532300	WOCKPHARMA	(10.1)
524804	AUOPHARMA	(6.5)
506690	UNICHEMLAB	(4.9)
500111	RELCAPITAL	(4.3)
530965	IOC	(3.5)
500390	RELINFRA	(3.0)
535754	ORIENTCEM	(2.6)
532885	CENTRALBK	(2.0)

## Low ES & High PS Stock Showing Weakness

BSE Code	NSE CODE	1 Month Return %
511431	VAKRANSOFT	(12.5)
500380	JKLAKSHMI	(11.7)
530007	JKTYRE	(10.4)
500104	HINDPETRO	(8.3)
531500	RAJESHEXPO	(7.0)
503310	SWANENERGY	(6.6)
500425	AMBUJACEM	(5.9)
500125	EIDPARRY	(4.8)
532505	UCOBANK	(4.7)
506395	COROMANDEL	(4.6)

\* ES- Earning Score is average of EM (Earning Momentum defined as relative performance in terms of operating profit growth) and EQ (Earning Quality defined as relative balance sheet strength in terms of debt and working capital)

\* PS- Price Score is of a company is relative price performance in multiple time-frame

# Analysis shown here is only for companies with market cap more than Rs 1,000 Cr.

## STDC / R25 Open Calls for 07-09-2020

### STDC (08)

No	Date	Type	Buy/Sell	Stock	Entry1	Entry2	SL	Tgt 1	Tgt 2
1	04-Sep-20	STDC	BUY	AUROPHARMA	820	790	769	888	925
2	28-Aug-20	STDC	BUY	KOTAKBANK	1430	1370	1265	1560	1620
3	13-Aug-20	STDC	BUY	PRAJIND	68	62	55	85	92
4	03-Aug-20	STDC	BUY	BANDHANBANK	315.5	291.5	272	365	385
5	15-Jul-20	STDC	BUY	CANBANK	101.5	94.5	87	124	134
6	08-Jul-20	STDC	BUY	ITC	195.5	174.5	161	220	232
7	06-Jul-20	STDC	BUY	BANKBARODA	51.5	44.5	40.5	64	74
8	03-Jul-20	STDC	BUY	PNB	35.5	31.5	28.5	45	52

### R-10 (03)

No	Date	Type	Buy/Sell	Stock	Entry1	Entry2	SL	Tgt 1	Tgt 2
1	24-Aug-20	R-10	BUY	GODREJCP	683.5	664	618	780	810
2	24-Aug-20	R-10	BUY	BHARTIARTL	522.5	507.5	470	580	610
3	18-Aug-20	R-10	BUY	ONGC	80.5	72	69	92	97

### VIEW

Domestic market lost steam after reaching near **our mentioned target of 11800** mark. Border tension between India & China, Weakest data of GDP and implementation of new margin norms by SEBI were the negative news which shocked the entire market with the Nifty losing over 2.6%. Short term top has been made now and the market is unlikely to move past this zone too soon. As the upside from current levels looks limited in the absence of triggers, we advise investors to remain cautious and avoid leverage bets to avoid getting caught on the wrong side.

### Technical Outlook-

- a) Nifty registered **Bearish engulfing** pattern on a weekly scale which suggest that now the Bears are attacking from a higher levels after a decent rally of four to five weeks
- b) It has **negated the formation of higher tops and higher bottoms**, completely wiped out previous week gain.
- c) A **spike in volatility** from lower levels indicate a volatile swing
- d) Confirmation of this reversal pattern can come after a decisive close **below 11300 mark** and then nifty can slip towards **11000 levels** from where **pullback is expected** on upside.
- e) Any bounce back attempt into **the zone of 11580-11600** shall be encountered with selling pressure. Hence, traders are advised to make use of rallies to short with a stop above **11800 on a closing basis**.

### CHART ANALYSIS



### SUPPORT & RESISTANCE LEVELS

	NIFTY LEVEL	JUSTIFICATION
Resistance 2	11800	Near Recent Swing High
Resistance 1	11600	Intermediate Resistance
Close	11333	
Support 1	11300	Low of Bearish Engulfing
Support 2	11000	Psychological levels

VIEW

After giving a gap-up opening, Banknifty rose to make a weekly high of 25232 on Monday. However it was unable to maintain at the higher level and a sharp selling pressure was witnessed in the index. At the end of the week Banknifty closed at 23011. It had a net loss of 6.2% over its previous week's close.

**OBSERVATIONS:**

Currently following things are witnessing on the chart of Banknifty.

- 1) Banknifty has found huge supply at 200 DMA.
- 2) A 'Dark cloud cover' pattern was formed on the weekly chart of the index.

By analysing the above observations it can be concluded that Banknifty has found a stiff resistance at 200 DMA and thereafter gave a sharp correction from that level. Formation of 'Dark cloud cover' on the weekly chart is giving indication of some more correction in the near future. On the downward path Banknifty may find strong support at 22220 and then 21340.

CHART ANALYSIS



SUPPORT & RESISTANCE LEVELS

RESISTANCE/SUPPORT	BANKNIFTY LEVEL
Resistance 2	24200
Resistance 1	23500
Close	23011
Support 1	22220
Support 2	21340

### VIEW

In line with our projection, domestic currency soared against the US dollar and appreciated to six month high while touching 72.755 mark. RBI took certain measures for maintaining the stability in the financial system through open money market operation and also by increasing Held to maturity (HTM) for bond holding by banks which helped Rupee to recover their previous losses. We expect that RBI can do more rate cuts over the next few months due to larger than expected contraction in GDP.

#### TECHNICAL FACTORS-

- a) Pair continued with the weak and remained volatile within the range of 95 paise in this week.
- b) On the weekly chart, pair formed **spinning bottom** candle and has continued to trade in lower lows and lower high
- c) Daily strength **indicator ADX surpassed - DMI** suggest strength in the bearish trend of pair
- d) Key support lies at **72.40** from where it can see a pullback toward **73.90** and **74.50** mark where resistance stand
- e) However, if it trades below 72.40 mark then it is likely to extend the down fall and test **72 and 71.75** mark on downside.

### CHART ANALYSIS



### SUPPORT & RESISTANCE LEVELS

USDINR LEVEL	
Resistance 2	74.45
Resistance 1	73.50
Close	73.29
Support 1	73.00
Support 2	72.50

**STDC : Long / BUY**

**4-Sep-20**

BSE Code	524804
NSE Symbol	AUROPHARMA
52wk Range H/L	967.60/281.15
Mkt Capital (Rs Cr)	47976
Av.Cash Volume(,000)	23028
Open Interest	

Buy Price	805
Stop Loss	769
Target Price1	888
Target Price2	925
Upside in Tgt1	10.31%
Upside in Tgt2	14.91%

### Technical Chart



**STDC: BUY AUROPHARMA BETWEEN 825-815 & DECLINE 795-785, 769(CLOSING BASIS) TGT 888, 925**

On the daily chart, you will see that the AUROPHARMA has completed a long term correction on 23rd March 2020. Since 23 March 2020, it has been rising in Impulse, which we have shown in the above chart with Elliott wave labeling. After completing Wave 3 on 10 August 2020 at 967.50, it has completed wave 4 on 1st September. Our expectation for wave 5 is that it can go up to 925 or even above it. You are advised to maintain 769 as stop loss on closing basis for the target of wave 5. If we connect the low of 28th July and 1st September, we will find that it has made a double bottom on the daily chart, which is also a bullish sign. Hence we recommend buy between 825-815 and on decline towards 795-785 for the price targets of 888 and 925 with 769 on closing basis as stop loss.

**STDC : Long / BUY**

**28-Aug-20**

BSE Code	500247
NSE Symbol	KOTAKBANK
52wk Range H/L	1739/1000
Mkt Capital (Rs Cr)	290458
Av.Cash Volume(00000)	31.31

Buy Price	1440-1420 & 1380-
Stop Loss	1265
Target Price1	1560
Target Price2	1520
Upside in Tgt1	15.00%
Upside in Tgt2	25.00%



**STDC : BUY KOTAKBANK @ 1440-1420 AND DIP TOWARDS 1380-1360 SL-1265 TGT- 1560 1620**

On daily chart, the stock has taken the support of the rising trend line and 20, 50, 100 & 200 days SMA. Stock also gave breakout from its consolidation zone on daily chart along with the ascending triangle pattern breakout of the medium bull trend on chart indicating a pullback on upside. Formation of bullish engulfing on weekly chart also indicates a positive move. The momentum indicators and oscillators are very well in the buy mode on a weekly scale which hints that bulls are still having an upper hand. Based on the above technical structure, one can take a long position in the stock around 1420-1440 and on a dip towards 1380-1360 with a stop loss of 1265 on closing basis for the target of 1560 and 1620.



**R-10 : Long / BUY**

**24-Aug-20**

BSE Code	532454
NSE Symbol	BHARTIARTL
52wk Range H/L	361.75/612
Mkt Capital (Rs Cr)	288380.76
Av.Cash Volume(00000)	18418.5

Buy Price	520-525 & 505-510
Stop Loss	470
Target Price1	580
Target Price2	610
Upside in Tgt1	12.60%
Upside in Tgt2	18.40%

### Technical Chart



**BUY BHARTIARTL AROUND 520-525 AND 505-510 SL 470 (CLOSING) TARGET 580/610**

BHARTIARTL- After getting a strong support at 200 DMA, the stock gave a smart pullback rally yesterday. A 'Pearing Line' was also formed on the daily chart. So some more upward movement is very likely in the near future.

**R-10 : Long / BUY**

**24-Aug-20**

BSE Code	532424
NSE Symbol	GODREJCP
52wk Range H/L	771/425
Mkt Capital (Rs Cr)	70065
Av.Cash Volume(00000)	10.12

Buy Price	680-687 & 661-667
Stop Loss	618
Target Price1	780
Target Price2	810
Upside in Tgt1	15.00%
Upside in Tgt2	25.00%

## Technical Chart



**R-10: BUY GODREJCP @ 680-687 AND ON DIP TOWARDS 661-667 SL-618 TGT-780 810**

Short term correction seems to be over in the stock and bulls are likely to take the charge again. The bullish candlestick pattern on August 24, 2020 near 50 and 20 days moving average suggests that bulls have entered in a counter at consolidation levels. Further, the falling trend line breakout on Friday's trading session with decent volume is providing an additional signal that short term rally might not be ruled out in the coming days. The short term moving averages ribbon is developing a bullish curve after a recent correction and prices are trading above all its major short term and medium-term moving averages. Traders can initiate long positions at 680-687 and on any dip till 661-337 for a gain of 780 and 810 with stop loss of 618 on closing basis.



## STDC : Long / BUY

13-Aug-20

BSE Code	522205
NSE Symbol	PRAJIND
52wk Range H/L	129/43
Mkt Capital (Rs Cr)	1260
Av.Cash Volume(00000)	2.64

Buy Price	69-67 & 61-63
Stop Loss	55
Target Price1	85
Target Price2	92
Upside in Tgt1	15.00%
Upside in Tgt2	25.00%

### Technical Chart



### STDC BUY PRAJIND @ 67-69 AND ON DIP TOWARDS 61-63 SL- 55 (CL BS) TGT- 85 92

Following a decline in March, stock hit a low of 43. Subsequently, it rallied back to a high of 72. Since then, the stock has been in sideways range consolidating gains. From last three months, stock has been forming a strong base near 55-58 zone. Few days back stock has given a trendline breakout with good momentum and volume. Bullish crossover in MACD and sustainability of RSI above 60 mark indicate upside move in near term. Traders can accumulate the stock at 67-69 and dip towards 61-63 for the upside target of 85 and 92 with a stop loss of 55 on closing basis.

**STDC : Long / BUY**

**3-Aug-20**

BSE Code	541153
NSE Symbol	BANDHANBNK
52wk Range H/L	152-650
Mkt Capital (Rs Cr)	46448
Av.Cash Volume(Lakhs)	200

Buy Price	313-316&290-293
Stop Loss	272
Target Price1	365
Target Price2	385
Upside in Tgt1	16.00%
Upside in Tgt2	22.00%



**STDC BUY BANDHANBNK AROUND 316-313 AND 290-293 SL 272 TARGET 365/385**

Bandhan Bank is trading above crucial support standing around 275 marks with positive sentiments. This stock is trading higher after making a bottom near 200 levels in the last month. At the same time crucial support trend line is also supportive to the counter near 270-280 zone indicates higher probability of short term bottoming out scenario near 280 levels. Overall this script is running in rising channel pattern and upper trend line is standing around 385 marks. Relative Strength Index is trading above 50 is also adding support to positive momentum. Looking at above technical rationale, we suggest buying Bandhan Bank around 313-316 and lower around 290-293 keeping a stop loss of 272 on closing basis for higher targets of 365 and it can be extended to 385 levels.

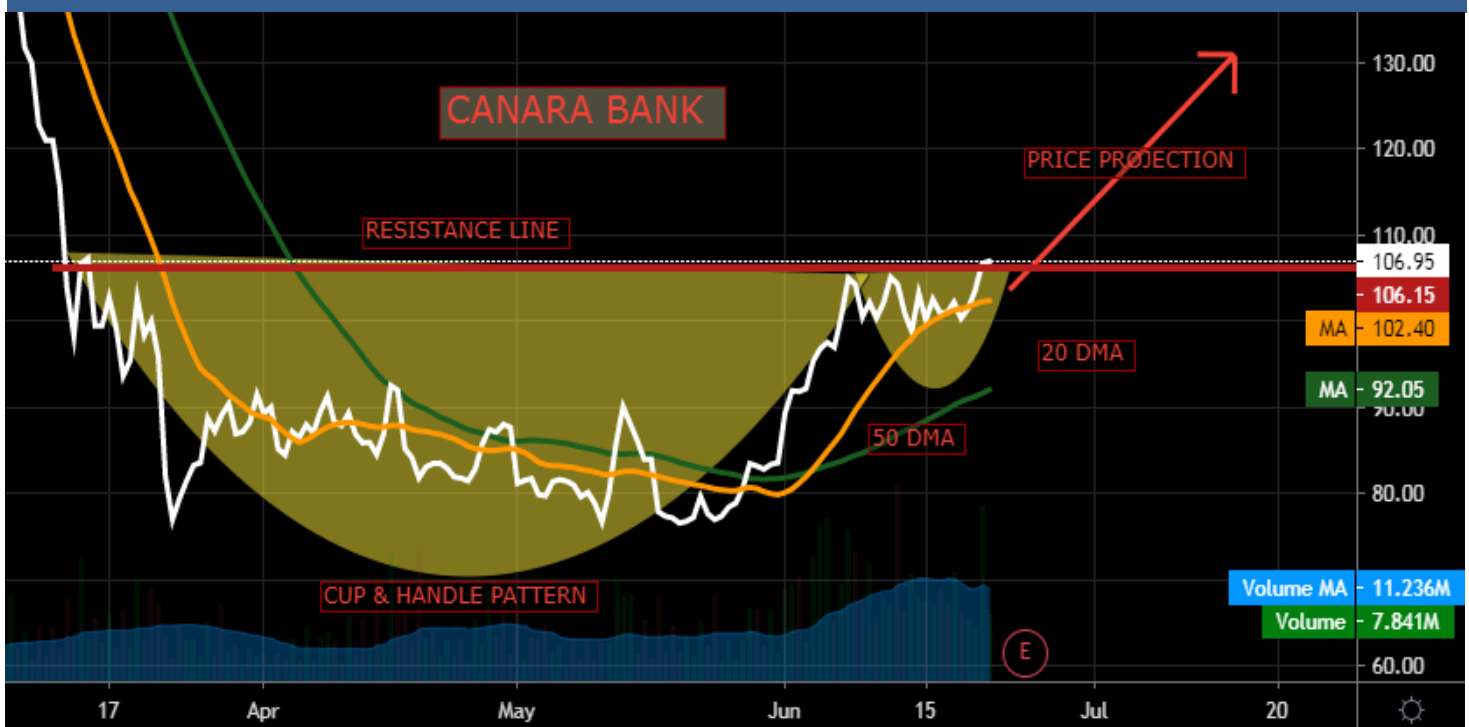
## STDC : Long / BUY

15-Jul-20

BSE Code	532483
NSE Symbol	CANBK
52wk Range H/L	296/73
Mkt Capital (Rs Cr)	2160
Av.Cash Volume(00000)	13.35

Buy Price	101-102 & 94-95
Stop Loss	87
Target Price1	124
Target Price2	134
Upside in Tgt1	21.00%
Upside in Tgt2	31.00%

### Technical Chart



### STDC BUY CANBANK AROUND 102-101 AND 95-94 SL 87 (CLOSING) TARGET 124/134

A Cup & Handle reversal pattern forms after a down trend, and its completion marks a trend reversal to up trend. C & H patterns are an integral part of technical analysis, but successful traders combine these techniques with technical indicators and other forms of technical analysis to maximize their odds of success. In the standard Cup & Handle pattern, we connect the high after Cup with the high created after the handle. A trend line is drawn by connecting these highest points of the two peaks, which is called as "Neckline". This trend line is the most important component of C & H pattern. CANNK has given a rounding bottom breakout around 100 for having targets of 120. At the same time the stock is having a strong resistance line standing around 108 levels indicating strong bullish breakout above these levels. Recent formation of cup and Handle pattern will give a breakout on a close above 108 marks which suggests buying in the stock on dip for higher targets of 135 too. Volume can also add further insight while trading these patterns. Decent volume participation while giving breakout is also giving support to C & H pattern.

## STDC : Long / BUY

8-Jul-20

BSE Code	500875
NSE Symbol	ITC
52wk Range H/L	282/134
Mkt Capital (Rs Cr)	173720
Av.Cash Volume(Lakhs)	17

Buy Price	173-176 & 194-197
Stop Loss	161
Target Price1	220
Target Price2	232
Upside in Tgt1	11.00%
Upside in Tgt2	18.00%

### Technical Chart



STDC BUY ITC AROUND 197-194 AND 173-176 SL 161 TARGET 220/232

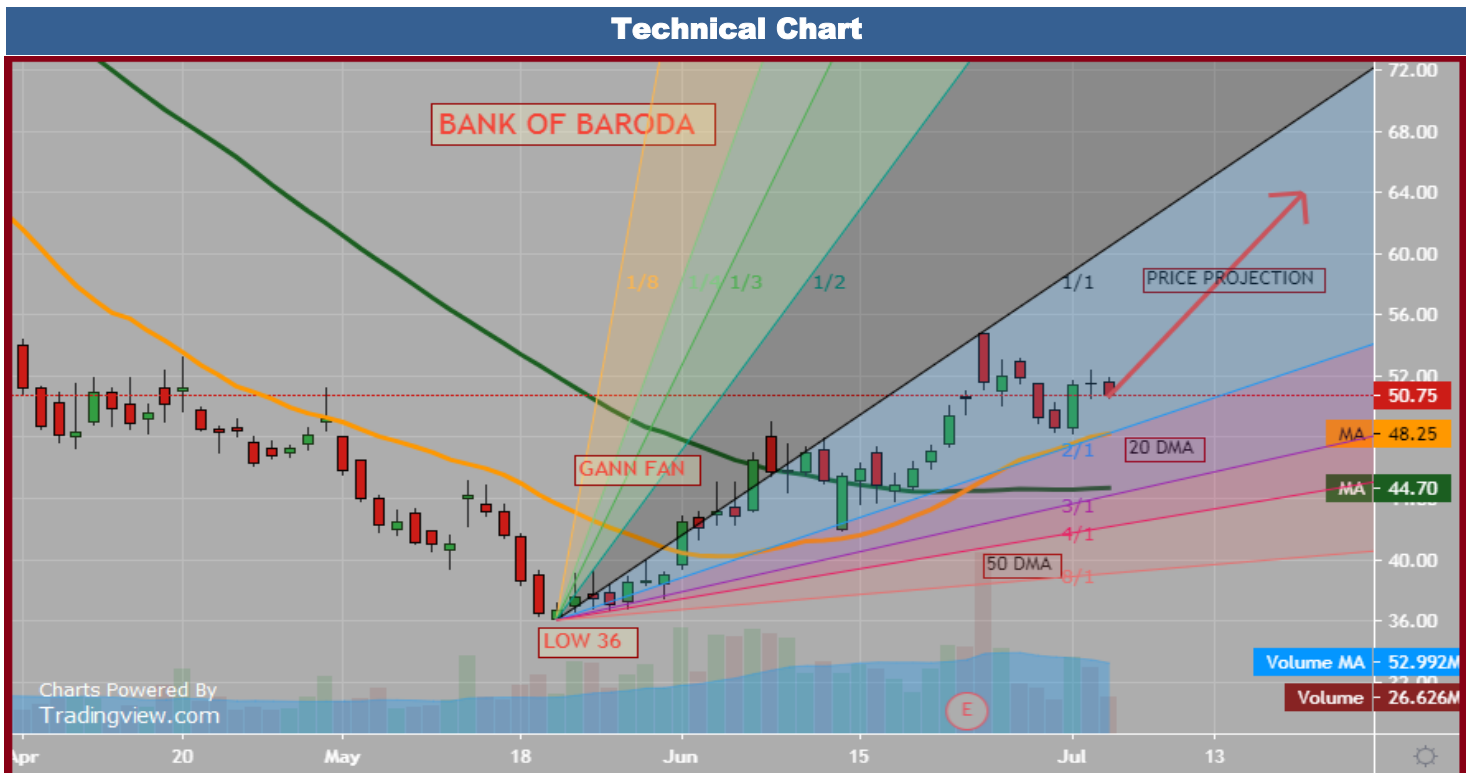
ITC is trading in a rising wedge every since it made a bottom near 134 levels and upper trend line comes near 220 marks. Recently it has given golden crossover and as per the setup prices should move up towards higher pivot points in short-term and mid-term as well. At the same time prices has given trend line breakout on the upside with the expansion of bands on daily chart suggesting a continuation of trend in the direction of breakout. MACD has given bullish crossover and about to move above equilibrium level of zero on daily chart. It has been in a steady uptrend in last few days with higher trough and crests as well. Positive crossover of 20 and 50 dma's suggest firm support on dips. Looking at above rationale traders can accumulate this stock for higher levels.

## STDC : Long / BUY

6-Jul-20

BSE Code	532134
NSE Symbol	BANKBARODA
52wk Range H/L	36/114
Mkt Capital (Rs Cr)	5604
Av.Cash Volume(00000)	1200

Buy Price	50.50-51.50&44-45
Stop Loss	40.5
Target Price1	64
Target Price2	74
Upside in Tgt1	26.00%
Upside in Tgt2	48.00%



**STDC BUY BANK OF BARODA AROUND 51.50-50.50 & 44-45 SL 40.50(CLOSING) TARGET 64/74**

Gann's wheels and Squares are some of the most common applications and form the cornerstone of Gann's work. Gann emphasizes on natural squares acting as a support and resistance in stock prices. In case of Bank of Baroda surprisingly recent swing low is 36 which is exact square of 6 and thereafter it is trading higher by taking support. Not only it has taken support but also it is trading above 49 levels which is (6+1) square as its current market price is 50. Understanding above rationale we can make a buying decision in the stock for higher levels. As per one of the method of Gann suggests 'even to even' cycle of the stock and as per this method, stock has made a bottom of 36 which is square of 6; hence immediate cycle on upside can go (6+2) square which comes to 64. So one can consider profit booking near 64 levels. Gann gave importance to crucial ratio of 5/8 or 62.5 in all of his trading methods. Keeping it mind we have calculated 5/8 levels of entire rise, which comes to 40.60. Entire bullish view negates on a breach of 5/8 levels and in case of BANKBARODA, we will consider 40.60 as a stop loss level. We recommend buying Bank of Baroda (BANKBARODA) around 51.50-50.50 & 44-45 SL 40.50(CLOSING) TARGET 64/74.



## STDC : Long / BUY

3-Jul-20

BSE Code	532461
NSE Symbol	PNB
52wk Range H/L	83/26
Mkt Capital (Rs Cr)	3877
Av.Cash Volume(00000)	12.25

Buy Price	35.50-36 & 31.50-32
Stop Loss	28.5
Target Price1	45
Target Price2	52
Upside in Tgt1	25.00%
Upside in Tgt2	44.00%



### STDC BUY PNB AROUND 36-35.50 AND 32-31.50 SL 28.50 (CLOSING) TARGET 45/52

This Scrip spurted from a low of 26 after forming cup and handle pattern, it showed pullback on upside marked the high of 35.50 marks and started consolidating there. Currently, it is waiting for another breakout on upside so that it can accelerate buying momentum further. Line of polarity on daily time frame of chart standing around 34 is suggesting bullish momentum in the scrip. Indicators and oscillators are also showing conducive scenario in the coming sessions. So based on the mentioned technical structure one can go long in the scrip around 36 and lower towards 32 for the target of 45/52 marks keeping a stop loss of 28.50.

Narnolia Financial Advisors Ltd. is a SEBI registered Research Analyst having SEBI Registration No. INH300006500. The Company/Analyst (s) does/do not have any holding in the stocks discussed but these stocks may have been recommended to clients in the past. Clients of Narnolia Financial Advisors Ltd. may be holding aforesaid stocks.

The stocks recommended are based on our analysis which is based on information obtained from public sources and sources believed to be reliable, but no independent verification has been made nor is its accuracy or completeness guaranteed.

**Disclosures:** Narnolia Financial Advisors Ltd. (NFAL) (Formerly Microsec Capital Ltd.) is a SEBI Registered Research Analyst having registration no. INH300006500. NFAL is engaged in the business of providing Stock Broking, Depository Participant, Merchant Banking, Portfolio Management & distribution of various financial products. Details of associate entities of NFAL is available on the website at [www.narnolia.com](http://www.narnolia.com)

No penalties have been levied on NFAL by any Regulatory/Statutory authority. NFAL, its associates, Research Analyst or their relative may have financial interest in the subject company. NFAL and/or its associates and/or Research Analyst may have beneficial ownership of 1% or more securities in the subject company at the end of the month immediately preceding the date of publication of the Research Report. NFAL and its associate company(ies), their directors and Research Analyst and their relatives may; (a) from time to time, have a long or short position in, act as principal in, and buy or sell the securities or derivatives thereof of companies mentioned herein. (b) be engaged in any other transaction involving such securities and earn brokerage or other compensation or act as a market maker in the financial instruments of the company(ies) discussed herein or act as an advisor or lender/borrower to such company(ies) or may have any other potential conflict of interests with respect to any recommendation and other related information and opinions.; however the same shall have no bearing whatsoever on the specific recommendations made by the analyst(s), as the recommendations made by the analyst(s) are completely independent of the views of the associates of NFAL even though there might exist an inherent conflict of interest in some of the stocks mentioned in the research report. Research Analyst may have served as director/officer, etc. in the subject company in the last 12 month period. NFAL and/or its associates may have received compensation from the subject company in the past 12 months. In the last 12 months period ending on the last day of the month immediately preceding the date of publication of this research report, NFAL or any of its associates may have: a) managed or co-managed public offering of securities from subject company of this research report, b) received compensation for investment banking or merchant banking or brokerage services from subject company of this research report, c) received compensation for products or services other than investment banking or merchant banking or brokerage services from the subject company of this research report. d) Subject Company may have been a client of NFAL or its associates during 12 months preceding the date of distribution of the research report. NFAL and its associates have not received any compensation or other benefits from the Subject Company or third party in connection with the research report. NFAL and / or its affiliates may do and seek to do business including Investment Banking with companies covered in the research reports. As a result, the recipients of this report should be aware that NFAL may have a potential conflict of interest that may affect the objectivity of this report. Compensation of Research Analysts is not based on any specific Merchant Banking, Investment Banking or Brokerage service transactions. Research Analyst's views on Subject Company may vary based on Fundamental research and Technical Research. Proprietary trading desk of NFAL or its associates maintains arm's length distance with Research Team as all the activities are segregated from NFAL research activity and therefore it can have an independent view with regards to subject company for which Research Team have expressed their views.

**Analyst Certification** The views expressed in this research report accurately reflect the personal views of the analyst(s) about the subject securities or issues, and no part of the compensation of the research analyst(s) was, is, or will be directly or indirectly related to the specific recommendations and views expressed by research analyst(s) in this report.

**Disclosure of Interest Statement-**

Analyst's ownership of the stocks mentioned in the Report	NIL
---	-----

A graph of daily closing prices of securities is available at [www.nseindia.com](http://www.nseindia.com), [www.bseindia.com](http://www.bseindia.com).

Correspondence Office Address: Arch Waterfront, 5<sup>th</sup> Floor, Block GP, Saltlake, Sector 5, Kolkata 700 091; Tel No.: 033-40541700; [www.narnolia.com](http://www.narnolia.com).

Registered Office Address: Marble Arch, Office 201, 2<sup>nd</sup> Floor, 236B, AIC Bose Road, Kolkata 700 020; Tel No.: 033-4050 1500; [www.narnolia.com](http://www.narnolia.com)

Compliance Officer: Manish Kr Agarwal, Email Id: [mkagarwal@narnolia.com](mailto:mkagarwal@narnolia.com), Contact No.:033-40541700.

Registration details of Company: Narnolia Financial Advisors Ltd. (NFAL): SEBI Stock Broker Registration: INZ000166737 (NSE/BSE/MSEI); NSDL/CDSL: IN-DP-380-2018; Research Analyst: INH300006500, Merchant Banking: (Registration No.: INM000010791), PMS: (Registration No.: INP000002304), AMFI Registered Mutual Fund distributor: ARN 3087

Registration Details of Group entities: G. Raj & Company Consultants Ltd (G RAJ)-BSE Broker INZ260010731; NSDL DP: IN-DP-NSDL-371-2014 || Narnolia Commerze Limited (Formerly Microsec Commerze Ltd.)-MCX/NCDEX Commodities Broker: INZ000051636 || NarnoliaVeloX Advisory Ltd.- SEBI Registered PMS: INP000005109 || Eastwind Capital Advisors Pvt Ltd. (EASTWIND)-SEBI Registered Investment Adviser: INA300005439 || Narnolia Insurance Brokers Limited (Formerly Microsec Insurance Brokers Ltd.)-IRDA Licensed Direct Insurance Broker (Life & Non-Life) Certificate No. 134, License No. DB046/02 || Narnolia Securities Ltd. (NSL)-AMFI Registered Mutual Fund distributor: ARN 20558, PFRDA NPS POP: 27092018 || Narnolia Capital Advisors Pvt. Ltd. - RBI Registered NBFC:B.05.02568.

**Disclaimer:**

This report has been prepared by Narnolia Financial Advisors Ltd. (NFAL) and is meant for sole use by the recipient and not for public circulation. The report and information contained herein is strictly confidential and may not be altered in any way, transmitted to, copied or distributed, in part or in whole, to any other person or to the media or reproduced in any form, without prior written consent of NFAL. The report is based on the facts, figures and information that are considered true, correct, reliable and accurate. The intent of this report is not recommendatory in nature. The information is obtained from publicly available media or other sources believed to be reliable. Such information has not been independently verified and no guaranty, representation of warranty, express or implied, is made as to its accuracy, completeness or correctness. All such information and opinions are subject to change without notice. The report is prepared solely for informational purpose and does not constitute an offer document or solicitation of offer to buy or sell or subscribe for securities or other financial instruments for the clients. Nothing in this report constitutes investment, legal, accounting and tax advice or a representation that any investment or strategy is suitable or appropriate to your specific circumstances. The securities discussed and opinions expressed in this report may not be suitable for all investors, who must make their own investment decisions, based on their own investment objectives, financial positions and needs of specific recipient. Certain transactions -including those involving futures, options, another derivative products as well as non-investment grade securities - involve substantial risk and are not suitable for all investors. Each recipient of this document should make such investigations as it deems necessary to arrive at an independent evaluation of an investment in the securities of companies referred to in this document (including the merits and risks involved), and should consult his/her/its own advisors to determine the merits and risks of such an investment. Though disseminated to all the customers simultaneously, not all customers may receive this report at the same time. NFAL will not treat recipients as customers by virtue of their receiving this report. Neither the Company, nor its directors, employees, agents or representatives shall be liable for any damages whether direct or indirect, incidental, special or consequential including lost revenue or lost profits or lost opportunities that may arise from or in connection with the use of the information/report. The person accessing this information specifically agrees to exempt NFAL or any of its affiliates or employees from, any and all responsibility/liability arising from such misuse and agrees not to hold NFAL or any of its affiliates or employees responsible for any such misuse and further agrees to hold NFAL or any of its affiliates or employees free and harmless from all losses, costs, damages, expenses that may be suffered by the person accessing this information due to any errors and delays.

This report is not directed or intended for distribution to or use by any person or entity resident in a state, country or any jurisdiction, where such distribution, publication, availability or use would be contrary to law, regulation or which would subject NFAL & its group companies to registration or licensing requirements within such jurisdictions.