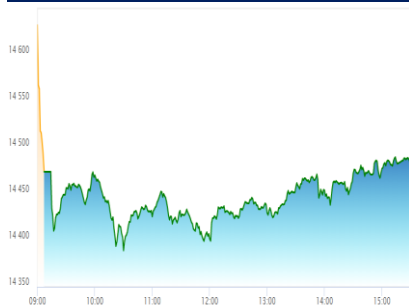


### NIFTY KEY LEVELS

Support 1 : 14380  
Support 2 : 14350  
Resistance1:14500  
Resistance2:14620

### Nifty Intraday Chart



### Market Outlook

Yesterday, Nifty opened positive at 14,474.05 and made a low of 14,383.10. From there it moved towards the all time high of 14498.20 and closed positive at 14484.75 levels. On sectorial front broader selling seen in METAL, MEDIA and Banks, while rest of the sector traded in a positive bias. India VIX closed positive by 8.57% at 22.41.

Bulls continued their relentless journey in the northern direction as the index managed to conquer a new milestone with the first-ever close above 14450 levels. However, the trading range for the day is converted into hanging man, where dip is bought. If the bulls manage a close above 14500, a new intraday target of 14620 can be projected. Similarly on the downside, low of hanging man at 14380 followed by 14350 mark.

### Indian Market

Index (Prev. Close)	Value	% Change
SENSEX	49,269.32	1.00%
NIFTY	14,484.75	0.96%
BANK NIFTY	31,998.90	-0.27%

### Global Market

Index (Prev. Close)	Value	% Change
DOW	31,008.69	-0.29%
NASDAQ	13,036.43	-1.25%
CAC	5,662.43	-0.78%
DAX	13,936.66	-0.80%
FTSE	6,798.48	-1.09%
EW ALL SHARE	24,419.16	0.56%

### Morning Asian Market (8:30 am)

SGX NIFTY	14,477.00	-0.03%
NIKKIE	28,171.00	0.11%
HANG SENG	27,965.00	0.20%

### Commodity Market

Commodity(Prev. Close)	Value	% Change
GOLD	49,300.00	0.68%
SILVER	65,532.00	2.03%
CRUDEOIL	55.63	0.02%
NATURALGAS	196.20	-0.76%

### Currency Market

Currency (Prev. Close)	Value	% Change
RS./DOLLAR	73.38	0.19%
RS./EURO	89.26	-0.43%
RS./POUND	99.01	-0.60%

### Bond Yield

Bond yield (Prev. Close)	Value	% Change
G-sec 10YR : IND	5.92	0.54%

% Change in 1 day

### Institutional Turnover

FII			
Investor	Buy(Cr.)	Sale(Cr.)	Net(Cr.)
11-Jan-21	9652	6513	3139
Jan-21	51482	39079	12403
2021	51482	39079	12403
DII			
Investor	Buy(Cr.)	Sale(Cr.)	Net(Cr.)
11-Jan-21	4497	7107	(2610)
Jan-21	31965	39453	(7488)
2021	31965	39453	(7488)

### Events Today

#### Spin-off

ORTINLAABS

EX-Date: 12/01/2021

#### Result

ATVPR  
CSL  
FILATEX  
HATHWAYB  
HPL  
INDBANK  
INDBNK  
KTKBANK  
MESCON  
SSWL  
TATAELXI  
TRADWIN  
VIKASMCORP

Please refer to page pg 05 for Bulk deals, Dividends, Bonus, Spilts, Buyback.

Quote of the Day : "Your limitation—it's only your imagination."

IEA_TCS	HOLD	11-Jan-21
<p>Despite the challenging environment of COVID-19 the spending on technology and development by various sectors pulled demand for TCS and managed to grow on account of BFSI, Healthcare and retail sector. Margin expansion based on lower employee cost while the salary hike was done during the quarter rolled out in 2HFY21 due to current pandemic. Strong growth aspect could be seen in near term based on the deal wins and the consumer spending on technology growing at a faster pace. We value the stock at Rs. 3299 valued at 32 times FY22E EPS HOLD.</p>		

IEA_Mutual Fund-Fund Flow	MACRO	09-Jan-21
<p>Outflows in the equity mutual funds prevailed in the month of Dec'20. Equity funds saw a net outflow of Rs 10147 crores in December'20. The contribution through Systematic Investment plans has risen sharply in the month of Dec'20 at Rs.8418 crore. The SIP contribution in the month of Nov'20 stood at Rs.7302 crore signifying a 15% MoM growth. All the Equity &amp; Equity oriented mutual funds except from Dividend Yield Funds and Sectoral Funds witnessed outflows in December'20. Fund of funds investing overseas have seen traction as they saw inflows worth Rs.1039 crores in December'20. The FII equity inflows has been the highest in the country in the month of December as it surpassed the highs of November. FIIs together put in Rs.62016 crore worth of money into Indian equities. The Calendar year 2020 saw FII Equity inflows into the country at a Rs.1,70,262 crores.</p>		

IEA_Monthly Volumes	MACRO	04-Jan-21
<p>Automobile industry saw strong volumes in the December month in spite of lower buying trend in the year end. PV and Tractor segment posted strong growth of 21% and 36% YoY respectively. The uptick in PV and Tractor segment was led by demand shift towards personal mobility, continued uptrend in agriculture and rising liquidity position of individuals across the country. 2W sector showed growth of 14% YoY led by festive season and discounts offered by few OEMS and 3W continued to decline and posted de-growth of 32% YoY respectively. CV sector after a while became positive and showed growth of 3% YoY driven by growth in logistics sector.</p>		

IPO - Antony Waste Handling Cell Ltd	NEUTRAL	21-Dec-20
<p>Antony Waste Handling Cell Ltd (AWHC) is one of the top players in waste management system in India. The management is highly dependent on the municipal authorities for substantial proportion of its business and revenues. Any decline in budgetary allocations towards Municipal Solid Waste Management services may have material adverse impact on the business. Also the company has receivable risk from municipalities. The issue is offered at P/E of 11.5x on FY20 earnings. We assign Neutral rating to the issue.</p>		

IPO - Mrs. Bector Foods Specialities Ltd	SUBSCRIBE	15-Dec-20
<p>Mrs. Bector Foods Specialities Ltd is one of the leading biscuit manufacturers in premium and mid-premium biscuits markets. It caters majority in north India with market share of 4.5% in premium and mid-premium biscuits market. The company's biscuit business revenues grew at a CAGR of 7.5% over FY2018-20 to Rs 283.5 cr and have gross margins of 46%. The company's retail bakery business grew at a CAGR of 29% over FY2018-20 to Rs 130.2 crore and has gross margins of 53.5%. Based on FY20 earnings, the issue is priced around 56 P/E while on the basis of FY21 H1 annualized data, P/E is around 22. Improving working capital days, reducing debt and better gross margins provides opportunity for longterm growth in premium segments. Hence, we recommend subscribe to offer for only long term investors.</p>		

- ❑ WallStreet ends lower: Dow -89; Nasdaq -1.25%
- ❑ SGX Nifty Fut trades at 14479 down 17 pts at 7.30 am IST today
- ❑ Asian markets mixed: Nikkei up 68 pts; HangSeng up 78 pts
- ❑ Brent trades at 55.62 \$/bbl; Nymex WTI at 52.23 \$/bbl
- ❑ Gold trades at 1845 \$/oz; Silver at 25 \$/oz
- ❑ US 10-yr yield at 1.15%
- ❑ Dollar Index up for 4th day now at 90.54 levels
- ❑ India VIX surged 8% even Index was positive y'day
- ❑ US: Democrats move impeachment article against Donald Trump
- ❑ China highlights highest Covid Infections in 5 months
- ❑ RBI FSR says in base case scenario gross NPAs may rise to 13.5% in Sep 2021 from 7.5% in Sep 2020
- ❑ Y'day in cash seg: FIIs bought 3139 crs; DIIs sold 2160 crs
- ❑ FIIs sold 1357 crs in Index Futures y'day
- ❑ Index Futures: FIIs reduced 11625 longs; adds 1725 shorts
- ❑ FIIs long exposure stands 79% in Index Futures
- ❑ Index Options Buying: FIIs add 18900 Calls; adds 29000 Puts
- ❑ Index Options Selling: FIIs sold 19500 Calls; sold 10800 Puts
- ❑ Active Options: Nifty 14400 PE and 14550 CE
- ❑ Fresh Longs: TataMotors, TataCons, HCLTech
- ❑ Nifty PCR now at 1.80
- ❑ Recent Highs: Nifty 14498; BankNifty 32288
- ❑ Delivery Vols: TCS 1000crs; Infy 885 crs; Wipro 500 crs; TaMo 600crs
- ❑ Positional bulls should trail stop loss to 14250 now
- ❑ FII data in F&O suggests some hedges have been taken
- ❑ Tatamotors strong Q3 Retail Sales; Recovery in JLR sales 13.1% up QoQ
- ❑ Tatamotors denies any talks of collaboration with Tesla
- ❑ DrReddy's Sputnik V meets primary endpoint of safety in Phase 2 clinical trial
- ❑ Gail to consider buyback of shares on Jan 15
- ❑ Dishman Carbogen promoter to sell 3.87% stake via OFS
- ❑ Thyrocare saw 34% growth in Q3; including growth in non-covid biz
- ❑ Today Results: TataElxsi, Ktkbank

- ❑ Indian banks' total gross non-performing assets (GNPAs) may rise to 14.8 percent under a severe stress scenario by September 2021 compared with 7.5 percent in the year-ago period, the Reserve Bank of India (RBI) said in its Financial Stability Report (FSR) released on January 11. Under a baseline scenario, the GNPAs of banks may rise to 13.5 percent by September, the report said. The RBI said these numbers were arrived at based on the macro stress tests incorporating the first advance estimates of gross domestic product (GDP) for 2020-21 released on January 7, 2021. "This highlights the need for proactive building up of adequate capital to withstand possible asset quality deterioration," the RBI said.
- ❑ **Tata Motors:** Jaguar Land Rover reported second successive quarter-on-quarter recovery in retail sales in 2020. The retail sales rose 13.1% to 1.28 lakh units from 1.13 lakh units in the preceding quarter and declined 9% year-on-year during the October-December period. China sales rose 19.1% year-on-year and 20.2% on the prior quarter. Retail sales in North America rose 31.7% and 20.5% in Europe on the prior quarter. However, the luxury carmaker said that sales in America, Overseas and Europe are yet to recover to pre-Covid levels.
- ❑ **GAIL India:** A meeting of Board of Directors will be held on January 15 to consider buyback of the fully paid-up equity shares of face value of Rs 10 each and declare interim dividend for the financial year 2020-21.
- ❑ **Godrej Agrovet, Venkys:** Bird flu outbreaks have increased to seven after Haryana and Gujarat confirmed positive cases among poultry and wild birds.
- ❑ **Laurus Labs:** The wholly-owned subsidiary of the company, Laurus Synthesis, has incorporated a wholly-owned subsidiary under name of Laurus Ingredients with effect from January 9, for undertaking Ingredients Business and also for setting up Greenfield projects for the new Synthesis Business.
- ❑ **Thyrocare Technologies:** Saw significant business revival in Q3 after business activities resumed across all states. The non-Covid business in particular is showing growth after the end of the festive season. Marketing campaigns launched to promote preventive healthcare packages are showing promising results. Q3 in general is observed to be the least contributing quarter to the annual topline historically, though this year, revival of business coupled with aggressive marketing has enabled us to achieve about 34% YoY growth in the quarter. Covid RTPCR tests continue to contribute in terms of volume of tests performed in Q3.
- ❑ **Dishman Carbogen Amcis:** Promoter Adimans Technologies to sell up to 60.71 lakh shares of face value of Rs 2 each through an Offer for Sale. The shares to be sold represent 3.87% of the total issued and paid-up equity share capital of the company. The company retains an oversubscription option of 32.14 lakh shares of face value of Rs 2 each or 2.05% of the total equity. OFS for non-retail investors to open on January 12 and for Retail Investors on January 13. The Floor Price for the offer will be Rs 140 per share which is on par with Monday's closing price.
- ❑ **Dr Reddy's Laboratories:** Independent Data Safety and Monitoring Board has reviewed the safety data from Phase 2 clinical trial of the Sputnik V vaccine and recommended the phase 3 recruitment and to continue to the trial without any modifications. The DSMB concluded that no safety concerns were identified and that the study has met primary endpoints of safety. The data has been submitted to the DCGI for review and approval to continue phase 3 clinical trials

**Red:** Negative Impact **Green:** Positive Impact **Black :** Neutral.

## Management Interview

### **BHARTIARTL Management Interview**

- Budget 2021/2022 should focus on those at margins and not corporate tax cuts.
- There is no service provided by a telecom company in the world which Airtel does not provide.
- Call qualities have fairly advanced because most calls are not going to regular circuits. There is improvement in call drop and statistics tells that there is a rare case of call drop.
- Telecom industry emerged as hero during the pandemic , traffic pattern shifted offices to home within days. More radio sites were put up and more fiber was connected immediately.
- Management guided that 2021 will be a big change , as all ongoing work in rural areas will be completed, 4G coverage will be completed and network will stabilize. 5G foundation would be started by 2022 and company's new project satellite services will be in India by 2022-from the Himalayas, deep deserts, to security agencies, any place in the world you will have satellite communication.
- If Chinese players like Nokia and Samsung would be out then pricing pressure would be created, then government of India need to create ecosystem to bring in more manufacturers.

### **CANFINHOME Management Interview**

- The demand is back in affordable housing segment (almost 100%).Demand in premium segment in builder space is yet to be back.
- Going forward in next 6-8 quarters there needs be caution taken on profitability and asset quality front for most of the HFCs.
- The stress in HFCs due to COVID-19 is likely to be lesser than what management thought of 2 quarters back.
- The company will be able to maintain the NIMs in upwards of 3%.Spread of about 2.4%.
- Geography wise entire south except Kerala is doing well. In west Mumbai is slightly low on demand. The company is seeing traction in small cities in demand.
- Cost of funds is coming down for now and will continue so for few more quarter due to high liquidity. Removal of excess liquidity measures by RBI will not have an immediate impact on company's cost of funds.

### BULK DEAL

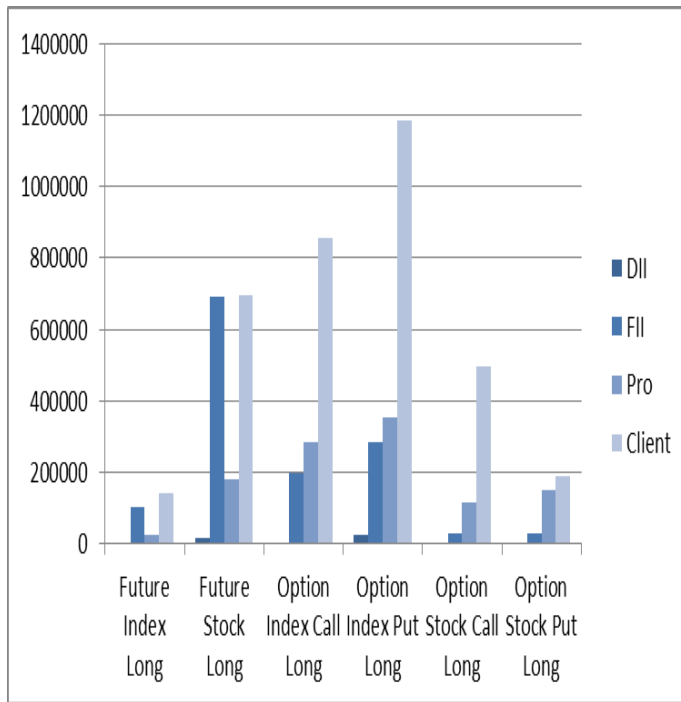
EXCHANGE	Date	SECURITY CODE	CLIENT NAME	DEAL TYPE	QUANTITY	PRICE
BSE	11-01-2021	532628	ALPHA LEON ENTERPRISES LLP	B	1,19,00,632	9.08
BSE	11-01-2021	532628	ALPHA LEON ENTERPRISES LLP	S	1,14,75,616	9.12
BSE	11-01-2021	542437	RADHIKA GUPTA	B	84,000	37.74
BSE	11-01-2021	542437	RADHU DEVELOPERS PRIVATE LIMITED	S	76,000	37.71
BSE	11-01-2021	540545	PAVANKUMAR KETANKUMAR THAKKAR	B	1,00,000	51
BSE	11-01-2021	540545	SHALVI PAVAN THAKKAR	B	1,00,000	51.5
BSE	11-01-2021	512608	UDYAN ASHOK SINGHANIA	B	10,00,000	3.58
BSE	11-01-2021	512608	PREETI PIYUSH SHAH	B	7,54,993	3.46
BSE	11-01-2021	512608	PREETI PIYUSH SHAH	S	13,44,659	3.58
BSE	11-01-2021	530309	VINOD VILAS SABLE	B	20,000	22.27
BSE	11-01-2021	530309	RICHA ARNEJA	S	20,000	22.26
BSE	11-01-2021	532843	RAKESH JHUNJHUNWALA	B	50,00,000	179.4
BSE	11-01-2021	532843	RARE ENTERPRISES	S	50,00,000	179.4
BSE	11-01-2021	541627	T SHAH AMI	S	35,000	15.5
BSE	11-01-2021	541627	KOMAL MANISHKUMAR GOR	S	30,000	15.47
BSE	11-01-2021	541627	GULAPHALIYABEGUM	B	30,000	15.49
BSE	11-01-2021	541627	MOHAMMEDMAAZSHABBIRAHMEDKOTHIWALE	B	36,450	15.5
BSE	11-01-2021	542924	VIRALKUMAR RASIKBHAI PATEL	B	30,000	80.95
BSE	11-01-2021	542924	DEV GANPAT PAWAR	S	30,000	80.95
BSE	11-01-2021	539997	ABHINAV AGGARWAL	B	72,000	59.95
BSE	11-01-2021	539767	NISHIL SURENDRABHAI MARFATIA	B	35,868	17.5
BSE	11-01-2021	539767	NISHIL SURENDRABHAI MARFATIA	S	3,000	19.3
BSE	11-01-2021	539291	HIMADRI JIGAR SHAH	S	27,000	88.77
BSE	11-01-2021	539291	VIRALKUMAR RASIKBHAI PATEL	B	24,388	88.6
BSE	11-01-2021	539291	DISHANT BHARATBHAI SHAH	B	54,345	88.85
BSE	11-01-2021	539291	VIRALKUMAR RASIKBHAI PATEL	S	26,483	88.4
BSE	11-01-2021	532911	DEEPAK KUNWAR	B	75,000	17.16
BSE	11-01-2021	532911	SKA SECURITIES AND FINANCIAL SERVICES PRIVATE LTD	B	80,000	18
BSE	11-01-2021	511557	ALOK ASHOK TIWARI	B	86,041	28
BSE	11-01-2021	511557	SANDESH MADHUKAR SAWANT	S	52,765	27.67
BSE	11-01-2021	511557	SHRENI CONSTRUCTION PRIVATE LIMITED	B	38,030	27.52
BSE	11-01-2021	511557	SHRENI CONSTRUCTION PRIVATE LIMITED	S	38,361	29.47
BSE	11-01-2021	511557	ZUBER TRADING LLP	S	1,00,000	28
BSE	11-01-2021	531952	SITA RAM	B	70,387	60.77
BSE	11-01-2021	531952	AKASH DAGAR	S	52,531	60.54
BSE	11-01-2021	539026	DEVJEET CHAKRABORTY	B	28,000	27.93
BSE	11-01-2021	532070	VISHALVIPINBHAIBHATT	B	32,181	11.62
BSE	11-01-2021	532070	VISHALVIPINBHAIBHATT	S	21,800	11.28
BSE	11-01-2021	533644	TOPGAIN FINANCE PRIVATE LIMITED	B	11,90,398	4.13
BSE	11-01-2021	533644	TOPGAIN FINANCE PRIVATE LIMITED	S	13,40,398	4.16
BSE	11-01-2021	533644	ASHWIN STOCKS AND INVESTMENT PRIVATE LIMITED	B	22,71,456	4.11
BSE	11-01-2021	533644	SNEHIL MEHTA	B	30,00,002	4.12
BSE	11-01-2021	533644	ASHWIN STOCKS AND INVESTMENT PRIVATE LIMITED	S	9,36,456	4.18
BSE	11-01-2021	533644	ALPHA LEON ENTERPRISES LLP	B	10,570	4
BSE	11-01-2021	533644	ALPHA LEON ENTERPRISES LLP	S	31,00,023	4.18
BSE	11-01-2021	539402	ARYAMAN BROKING LIMITED	B	44,800	23.5
BSE	11-01-2021	539402	SAJANKUMAR RAMESHWARLAL BAJAJ	S	44,800	23.5

### Corporate Action

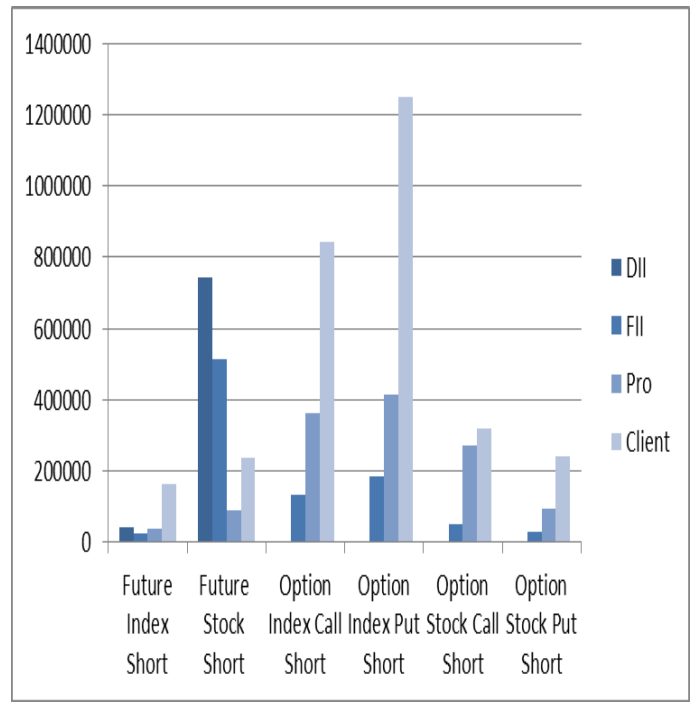
EXCHANGE	SECURITY CODE	SECURITY NAME	EX- DATE	PURPOSE	RECORD DATE
BSE	540678	COCHINSHIP	13-01-2021	Interim Dividend - Rs. - 9.0000	14-Jan-21

## PARTICIPANT WISE OPEN INTEREST

### Long Position

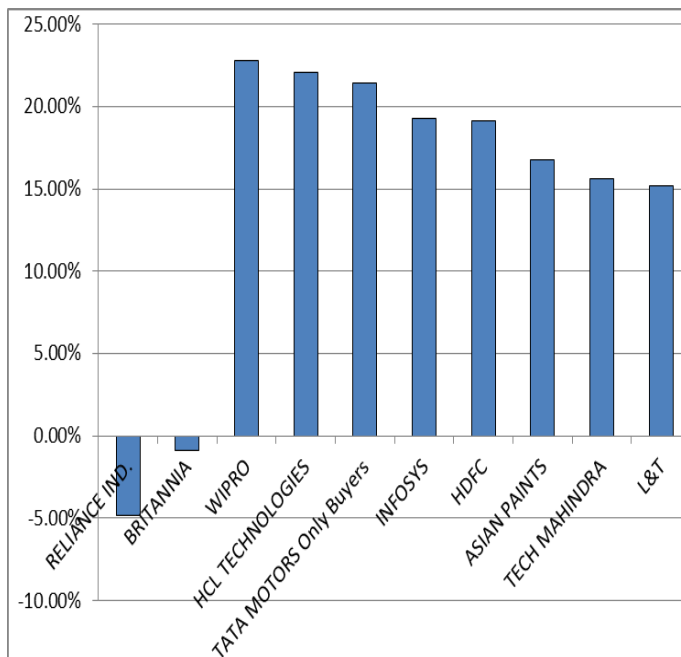


### Short Position

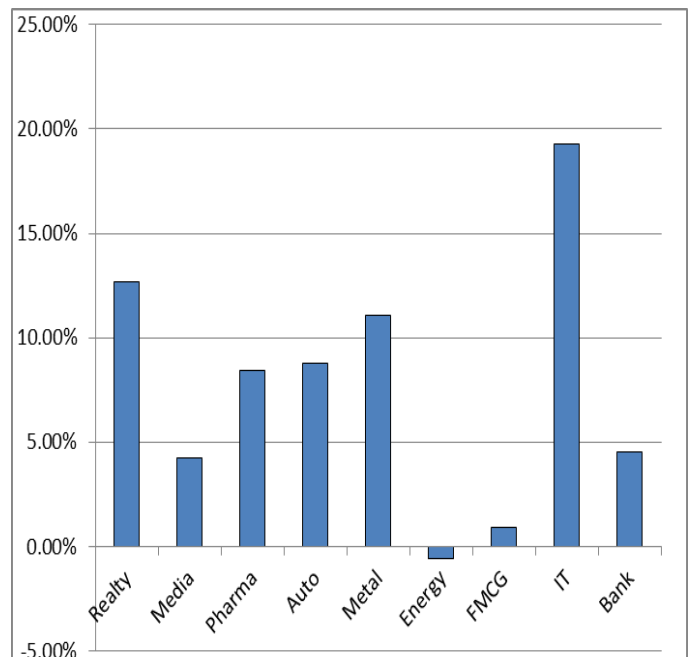


## MARKET MOVERS (1 MONTH CHANGE)

### Nifty Movers



### NSE Sectoral Indices Performance



### Result Calendar Q3FY21

BSE Code	Company Name	Result Date	BSE Code	Company Name	Result Date
518017	BHEEMACEM	11-Jan-21	524661	WELCURE	16-Jan-21
505526	DOLAT	11-Jan-21	533217	HMVL	18-Jan-21
540124	GNA	11-Jan-21	512405	IPOWER	18-Jan-21
509040	NETLINK	11-Jan-21	500266	MAHSCOOTER	18-Jan-21
512103	NIDHGRN	11-Jan-21	532819	MINDTREE	18-Jan-21
509845	RJSHAH	11-Jan-21	539762	MODCL	18-Jan-21
531015	VENMAX	11-Jan-21	500355	RALLIS	18-Jan-21
531404	ZICOM	11-Jan-21	540143	SAGARSOFT	18-Jan-21
500028	ATVPR	12-Jan-21	540737	SGRL	18-Jan-21
538868	CSL	12-Jan-21	538635	SNOWMAN	18-Jan-21
526227	FILATEX	12-Jan-21	531638	SURAJLTD	18-Jan-21
509073	HATHWAYB	12-Jan-21	521064	TRIDENT	18-Jan-21
540136	HPL	12-Jan-21	533573	APLLTD	19-Jan-21
511473	INDBANK	12-Jan-21	541865	ASRL	19-Jan-21
523465	INDBNK	12-Jan-21	500878	CEATLTD	19-Jan-21
532652	KTKBANK	12-Jan-21	542867	CSBBANK	19-Jan-21
540744	MESCON	12-Jan-21	532622	GDL	19-Jan-21
513262	SSWL	12-Jan-21	531531	HATSUN	19-Jan-21
500408	TATAELXI	12-Jan-21	532662	HTMEDIA	19-Jan-21
509953	TRADWIN	12-Jan-21	540716	ICICIGI	19-Jan-21
542655	VIKASMCORP	12-Jan-21	540005	LTI	19-Jan-21
540776	SPAISA	13-Jan-21	500215	ATFL	20-Jan-21
520077	AMTEKAUTO	13-Jan-21	532978	BAJAJFINSV	20-Jan-21
519532	ASIANTNE	13-Jan-21	500034	BAJFINANCE	20-Jan-21
500084	CESC	13-Jan-21	530309	CHANDRAP	20-Jan-21
538476	CTL	13-Jan-21	508906	EVERESTIND	20-Jan-21
540602	GTPL	13-Jan-21	500469	FEDERALBNK	20-Jan-21
500209	INFY	13-Jan-21	541729	HDFCAMC	20-Jan-21
500278	MIDESTI-B	13-Jan-21	532100	INDOCITY	20-Jan-21
522257	RAJOOENG	13-Jan-21	540115	LTTS	20-Jan-21
507685	WIPRO	13-Jan-21	506590	PHILIPCARB	20-Jan-21
533137	DEN	14-Jan-21	502090	SAGCEM	20-Jan-21
542685	DGCONTENT	14-Jan-21	532663	SASKEN	20-Jan-21
500183	HFCL	14-Jan-21	512153	SPECMKT	20-Jan-21
523445	RIIL	14-Jan-21	539268	SYNGENE	20-Jan-21
513010	TATASTLLP	14-Jan-21	540595	TEJASNET	20-Jan-21
517498	WEBELSOLAR	14-Jan-21	509966	VSTIND	20-Jan-21
540545	BGJL	15-Jan-21	500820	ASIANPAINT	21-Jan-21
532974	BIRLAMONEY	15-Jan-21	532977	BAJAJ-AUTO	21-Jan-21
540936	GGL	15-Jan-21	500490	BAJAJHLDNG	21-Jan-21
533162	HATHWAY	15-Jan-21	532523	BIOCON	21-Jan-21
532281	HCLTECH	15-Jan-21	500110	CHENNPETRO	21-Jan-21
533519	L&TFH	15-Jan-21	532175	CYIENT	21-Jan-21
517536	ONWARDTEC	15-Jan-21	526299	MPHASIS	21-Jan-21
523648	PLASTIBLEN	15-Jan-21	500314	ORIENTHOT	21-Jan-21
532689	PVR	15-Jan-21	511702	PARSHINV	21-Jan-21
532638	SHOPERSTOP	15-Jan-21	521080	PASARI	21-Jan-21
504370	ZARDIINV	15-Jan-21	531879	PIONDIST	21-Jan-21
530871	CHEMBOND	16-Jan-21	500405	SUPPETRO	21-Jan-21
507960	GUJHOTE	16-Jan-21	504067	ZENSARTECH	21-Jan-21
500180	HDFCBANK	16-Jan-21	505036	ACGL	22-Jan-21
540526	IRBINVIT	16-Jan-21	506597	AMAL	22-Jan-21
500213	ITHL	16-Jan-21	522134	ARTSONEN	22-Jan-21
539016	NEIL	16-Jan-21	521176	GANGOTRI	22-Jan-21
531172	PRANAVSP	16-Jan-21	543245	GLAND	22-Jan-21
531869	SACHEMT	16-Jan-21	540777	HDFCLIFE	22-Jan-21
540686	SMRUTHIORG	16-Jan-21	500228	JSWSTEEL	22-Jan-21



### Result Calendar Q3FY21

BSE Code	Company Name	Result Date	BSE Code	Company Name	Result Date
500407	SWARAJENG	22-Jan-21	500010	HDFC	02-Feb-21
542774	APMFINVEST	23-Jan-21	524558	NEULANDLAB	02-Feb-21
523405	JMFINANCIL	23-Jan-21	500730	NOCIL	02-Feb-21
532313	MAHLIFE	23-Jan-21	532369	RAMCOIND	02-Feb-21
509930	SUPREMEIND	23-Jan-21	509220	PTL	03-Feb-21
511196	CANFINHOME	25-Jan-21	500260	RAMCOCEM	03-Feb-21
541179	ISEC	25-Jan-21	532370	RAMCOSYS	03-Feb-21
500245	KIRLFER	25-Jan-21	500414	TIMEX	03-Feb-21
504258	LAKSELEC	25-Jan-21	532835	ICRA	04-Feb-21
532504	NAVINFLUOR	25-Jan-21	500660	GLAXO	05-Feb-21
532215	AXISBANK	27-Jan-21	523638	IPRINGLTD	05-Feb-21
530999	BALAMINES	27-Jan-21	524000	MAGMA	05-Feb-21
531162	EMAMILTD	27-Jan-21	533393	TCIDEVELOP	05-Feb-21
500252	LAXMIMACH	27-Jan-21	532515	TVTODAY	05-Feb-21
523754	MAHEPC	27-Jan-21	535755	ABFRL	08-Feb-21
523828	MENONBE	27-Jan-21	500012	ANDHRAPET	08-Feb-21
540767	NAM-INDIA	27-Jan-21	590072	SUNDRMBRAK	08-Feb-21
532661	RML	27-Jan-21	500710	AKZOINDIA	09-Feb-21
502180	SHREDIGCEM	27-Jan-21	540153	ENDURANCE	09-Feb-21
532432	UNITDSPR	27-Jan-21	504093	PANAENERG	09-Feb-21
500049	BEL	28-Jan-21	505800	RANEHOLDIN	09-Feb-21
526612	BLUEDART	28-Jan-21	500330	RAYMOND	09-Feb-21
500830	COLPAL	28-Jan-21	540212	TCIEXP	09-Feb-21
533167	COROENGG	28-Jan-21	511742	UGROCAP	09-Feb-21
523127	EIHAHOTELS	28-Jan-21	500133	ESABINDIA	10-Feb-21
500171	GHCL	28-Jan-21	500150	FOSECOIND	10-Feb-21
504084	KAYCEEI	28-Jan-21	502958	LAKSHMIMIL	10-Feb-21
542651	KPITTECH	28-Jan-21	523160	MORGANITE	10-Feb-21
500250	LGBBROSLTD	28-Jan-21	500307	NIRLON	10-Feb-21
532720	M&MFIN	28-Jan-21	500126	PGHL	10-Feb-21
531319	MARUTISE	28-Jan-21	517506	TTKPRESTIG	10-Feb-21
500331	PIDILITIND	28-Jan-21	500530	BOSCHLTD	11-Feb-21
506655	SUDARSCHEM	28-Jan-21	533007	LGBFORGE	11-Feb-21
512527	SUPER	28-Jan-21	514036	LOYALTEX	11-Feb-21
523411	ADCINDIA	29-Jan-21	517344	MINDTECK	11-Feb-21
500027	ATUL	29-Jan-21	500672	NOVARTIND	11-Feb-21
500067	BLUESTARCO	29-Jan-21	535514	PRIMECAPM	11-Feb-21
541269	CHEMFABALKA	29-Jan-21	539123	VBIND	11-Feb-21
511243	CHOLAFIN	29-Jan-21	530431	ADORFO	12-Feb-21
500087	CIPLA	29-Jan-21	523850	AXTEL	12-Feb-21
500096	DABUR	29-Jan-21	531737	GREENCREST	12-Feb-21
500124	DRREDDY	29-Jan-21	500202	INDLEASE	12-Feb-21
519552	HERITGFOOD	29-Jan-21	511092	JMDVL	12-Feb-21
533179	PERSISTENT	29-Jan-21	501343	MOTOGENFIN	12-Feb-21
532988	RANEENGINE	29-Jan-21	532777	NAUKRI	12-Feb-21
532527	RKFORGE	29-Jan-21	505502	PSITINFRA	12-Feb-21
524715	SUNPHARMA	29-Jan-21	521161	SLSTLQ	12-Feb-21
532390	TAJGVK	29-Jan-21	526901	SONALAD	12-Feb-21
500570	TATAMOTORS	29-Jan-21	521178	SRMCL	12-Feb-21
570001	TATAMTRDVR	29-Jan-21	524038	VENLONENT	12-Feb-21
532174	ICICIBANK	30-Jan-21	500008	AMARAJABAT	13-Feb-21
539437	IDFCFIRSTB	30-Jan-21	531215	RTSPOWR	13-Feb-21
532755	TECHM	30-Jan-21	541163	SANDHAR	13-Feb-21
500870	CASTROLIND	01-Feb-21	500790	NESTLEIND	16-Feb-21
500165	KANSAINER	01-Feb-21	532756	MAHINDCIE	19-Feb-21
532987	RBL*	01-Feb-21	500339	RAIN	25-Feb-21
506767	ALKYLAMINE	02-Feb-21			

Economic Calendar					
Country	Monday 11th Jan 2021	Tuesday 12th Jan 2021	Wednesday 13th Jan 2021	Thursday 14th Jan 2021	Friday 15th Jan 2021
US		JOLTs Job Openings, 10-Year Note Auction	API Weekly Crude Oil Stock, Crude Oil Inventories, CPI	Federal Budget Balance, Beige Book, Initial Jobless Claims	PPI , Retail Sales, Retail Inventories Ex Auto, U.S. Baker Hughes Total Rig Count
UK/EUROPE			Industrial Production	ECB Monetary Policy Statement,	GDP, Trade Balance,
INDIA		CPI, IIP		WPI Inflation	FX Reserves, USD, Trade Balance

Narnolia Financial Advisors Ltd. is a SEBI registered Research Analyst having SEBI Registration No. INH300006500. The Company/Analyst (s) does/do not have any holding in the stocks discussed but these stocks may have been recommended to clients in the past. Clients of Narnolia Financial Advisors Ltd. may be holding aforesaid stocks.

The stocks recommended are based on our analysis which is based on information obtained from public sources and sources believed to be reliable, but no independent verification has been made nor is its accuracy or completeness guaranteed.

**Disclosures:** Narnolia Financial Advisors Ltd. (NFAL) (Formerly Microsec Capital Ltd.) is a SEBI Registered Research Analyst having registration no. INH300006500. NFAL is engaged in the business of providing Stock Broking, Depository Participant, Merchant Banking, Portfolio Management & distribution of various financial products. Details of associate entities of NFAL is available on the website at [www.narnolia.com](http://www.narnolia.com)

No penalties have been levied on NFAL by any Regulatory/Statutory authority. NFAL, its associates, Research Analyst or their relative may have financial interest in the subject company. NFAL and/or its associates and/or Research Analyst may have beneficial ownership of 1% or more securities in the subject company at the end of the month immediately preceding the date of publication of the Research Report. NFAL and its associate company(ies), their directors and Research Analyst and their relatives may; (a) from time to time, have a long or short position in, act as principal in, and buy or sell the securities or derivatives thereof of companies mentioned herein. (b) be engaged in any other transaction involving such securities and earn brokerage or other compensation or act as a market maker in the financial instruments of the company(ies) discussed herein or act as an advisor or lender/borrower to such company(ies) or may have any other potential conflict of interests with respect to any recommendation and other related information and opinions.; however the same shall have no bearing whatsoever on the specific recommendations made by the analyst(s), as the recommendations made by the analyst(s) are completely independent of the views of the associates of NFAL even though there might exist an inherent conflict of interest in some of the stocks mentioned in the research report. Research Analyst may have served as director/officer, etc. in the subject company in the last 12 month period. NFAL and/or its associates may have received compensation from the subject company in the past 12 months. In the last 12 months period ending on the last day of the month immediately preceding the date of publication of this research report, NFAL or any of its associates may have: a) managed or co-managed public offering of securities from subject company of this research report, b) received compensation for investment banking or merchant banking or brokerage services from subject company of this research report, c) received compensation for products or services other than investment banking or merchant banking or brokerage services from the subject company of this research report. d) Subject Company may have been a client of NFAL or its associates during 12 months preceding the date of distribution of the research report. NFAL and its associates have not received any compensation or other benefits from the Subject Company or third party in connection with the research report. NFAL and / or its affiliates may do and seek to do business including Investment Banking with companies covered in the research reports. As a result, the recipients of this report should be aware that NFAL may have a potential conflict of interest that may affect the objectivity of this report. Compensation of Research Analysts is not based on any specific Merchant Banking, Investment Banking or Brokerage service transactions. Research Analyst's views on Subject Company may vary based on Fundamental research and Technical Research. Proprietary trading desk of NFAL or its associates maintains arm's length distance with Research Team as all the activities are segregated from NFAL research activity and therefore it can have an independent view with regards to subject company for which Research Team have expressed their views.

**Analyst Certification** The views expressed in this research report accurately reflect the personal views of the analyst(s) about the subject securities or issues, and no part of the compensation of the research analyst(s) was, is, or will be directly or indirectly related to the specific recommendations and views expressed by research analyst(s) in this report.

**Disclosure of Interest Statement-**

Analyst's ownership of the stocks mentioned in the Report	NIL
---	-----

A graph of daily closing prices of securities is available at [www.nseindia.com](http://www.nseindia.com), [www.bseindia.com](http://www.bseindia.com).

Correspondence Office Address: Arch Waterfront, 5<sup>th</sup> Floor, Block GP, Saltlake, Sector 5, Kolkata 700 091; Tel No.: 033-40541700; [www.narnolia.com](http://www.narnolia.com).

Registered Office Address: Marble Arch, Office 201, 2<sup>nd</sup> Floor, 236B, AJC Bose Road, Kolkata 700 020; Tel No.: 033-4050 1500; [www.narnolia.com](http://www.narnolia.com)

Compliance Officer: Manish Kr Agarwal, Email Id: [mkagarwal@narnolia.com](mailto:mkagarwal@narnolia.com), Contact No.:033-40541700.

Registration details of Company: Narnolia Financial Advisors Ltd. (NFAL): SEBI Stock Broker Registration: INZ000166737 (NSE/BSE/MSEI); NSDL/CDSL: IN-DP-380-2018; Research Analyst: INH300006500, Merchant Banking: (Registration No.: INM000010791), PMS: (Registration No.: INP000002304), AMFI Registered Mutual Fund distributor: ARN 3087

Registration Details of Group entities: G. Raj & Company Consultants Ltd (G RAJ)-BSE Broker INZ260010731; NSDL DP: IN-DP-NSDL-371-2014 || Narnolia Commerce Limited (Formerly Microsec Commerce Ltd.)-MCX/NCDEX Commodities Broker: INZ000051636 || NarnoliaVeloX Advisory Ltd.- SEBI Registered PMS: INP000005109 || Eastwind Capital Advisors Pvt Ltd. (EASTWIND)-SEBI Registered Investment Adviser: INA300005439 || Narnolia Insurance Brokers Limited (Formerly Microsec Insurance Brokers Ltd.)-IRDA Licensed Direct Insurance Broker (Life & Non-Life) Certificate No. 134, License No. DB046/02 || Narnolia Securities Ltd. (NSL)-AMFI Registered Mutual Fund distributor: ARN 20558, PFRDA NPS POP: 27092018 || Narnolia Capital Advisors Pvt. Ltd. - RBI Registered NBFC:B.05.02568.

**Disclaimer:**

This report has been prepared by Narnolia Financial Advisors Ltd. (NFAL) and is meant for sole use by the recipient and not for public circulation. The report and information contained herein is strictly confidential and may not be altered in any way, transmitted to, copied or distributed, in part or in whole, to any other person or to the media or reproduced in any form, without prior written consent of NFAL. The report is based on the facts, figures and information that are considered true, correct, reliable and accurate. The intent of this report is not recommendatory in nature. The information is obtained from publicly available media or other sources believed to be reliable. Such information has not been independently verified and no guaranty, representation of warranty, express or implied, is made as to its accuracy, completeness or correctness. All such information and opinions are subject to change without notice. The report is prepared solely for informational purpose and does not constitute an offer document or solicitation of offer to buy or sell or subscribe for securities or other financial instruments for the clients. Nothing in this report constitutes investment, legal, accounting and tax advice or a representation that any investment or strategy is suitable or appropriate to your specific circumstances. The securities discussed and opinions expressed in this report may not be suitable for all investors, who must make their own investment decisions, based on their own investment objectives, financial positions and needs of specific recipient. Certain transactions -including those involving futures, options, another derivative products as well as non-investment grade securities - involve substantial risk and are not suitable for all investors. Each recipient of this document should make such investigations as it deems necessary to arrive at an independent evaluation of an investment in the securities of companies referred to in this document (including the merits and risks involved), and should consult his/her/its own advisors to determine the merits and risks of such an investment. Though disseminated to all the customers simultaneously, not all customers may receive this report at the same time. NFAL will not treat recipients as customers by virtue of their receiving this report. Neither the Company, not its directors, employees, agents or representatives shall be liable for any damages whether direct or indirect, incidental, special or consequential including lost revenue or lost profits or lost opportunities that may arise from or in connection with the use of the information/report. The person accessing this information specifically agrees to exempt NFAL or any of its affiliates or employees from, any and all responsibility/liability arising from such misuse and agrees not to hold NFAL or any of its affiliates or employees responsible for any such misuse and further agrees to hold NFAL or any of its affiliates or employees free and harmless from all losses, costs, damages, expenses that may be suffered by the person accessing this information due to any errors and delays.

This report is not directed or intended for distribution to or use by any person or entity resident in a state, country or any jurisdiction, where such distribution, publication, availability or use would be contrary to law, regulation or which would subject NFAL & its group companies to registration or licensing requirements within such jurisdictions.