

NIFTY KEY LEVELS

Support 1 : 14950
Support 2 : 14900
Resistance1:15300
Resistance2:15350

Events Today

Dividend

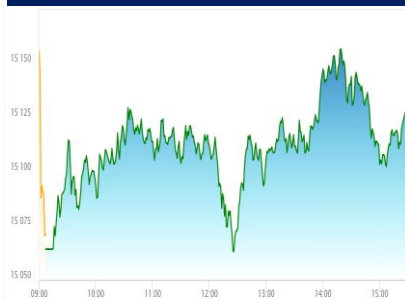
CHOLAFIN
CUMMINSIND
DAAWAT
IOC
LALPATHLAB
ORIENTELEC
PERSISTENT
SUNPHARMA
VRFILMS

Ex-Date: 09-02-2021

Result

MGL
BERGEPAIN
MUTHOOTFIN
CENTRALBK
CYBERMEDIA
ELECON
ENDURANCE
FSL
RENUKA
TCIEXP

Nifty Intraday Chart



Market Outlook

Yesterday, Nifty opened positive at 15,064.30 and made a low of 15,041.05. From there it moved towards the all time high of 15159.90 and closed positive at 15115.80 levels. On sectorial front profit booking seen in FMCG and PSU BANK, while rest of the sectors traded with positive bias. India VIX closed positive by 2.31% at 23.96.

Nifty continued its upward rally throughout yesterday and closed the day with a net gain of 1.3%. Near-term trend of the index is looking positive. Immediate strong support of Nifty is at 14750 and long positions should hold by placing a trailing stop loss at 14750.

Indian Market

Index (Prev. Close)	Value	% Change
SENSEX	51,348.77	1.22%
NIFTY	15,115.80	1.28%
BANK NIFTY	35,983.65	0.92%

Global Market

Index (Prev. Close)	Value	% Change
DOW	31,385.76	0.76%
NASDAQ	13,987.64	0.95%
CAC	5,686.03	0.47%
DAX	14,059.91	0.02%
FTSE	6,523.53	0.53%
EW ALL SHARE	24,832.99	-0.10%

Morning Asian Market (8:30 am)

SGX NIFTY	15,168.50	0.01%
NIKKIE	29,514.50	0.43%
HANG SENG	29,320.00	0.00%

Commodity Market

Commodity(Prev. Close)	Value	% Change
GOLD	47,855.00	1.27%
SILVER	70,168.00	2.08%
CRUDEOIL	60.97	0.44%
NATURALGAS	208.90	-3.24%

Currency Market

Currency (Prev. Close)	Value	% Change
RS./DOLLAR	72.96	0.05%
RS./EURO	87.76	0.48%
RS./POUND	100.01	0.17%

Bond Yield

Bond yield (Prev. Close)	Value	% Change
G-sec 10YR : IND	6.04	-0.51%

% Change in 1 day

Institutional Turnover

FII			
Investor	Buy(Cr.)	Sale(Cr.)	Net(Cr.)
08-Feb-21	8018	6141	1877
Feb-21	64546	49075	15472
2021	232788	208335	24453
DII			
Investor	Buy(Cr.)	Sale(Cr.)	Net(Cr.)
08-Feb-21	5356	5861	(505)
Feb-21	38659	43877	(5217)
2021	144407	161595	(17188)

Please refer to page pg 7 for Bulk deals, Dividends, Bonus, Splits, Buyback.

Quote of the Day : "The big money is not in the buying and selling, but in the waiting."

Monthly AUTO Volumes

AUTOBOBILES

08-Feb-21

Automobile industry witnessed strong growth in volumes in January 2021 largely driven by continued agri demand, deferred purchases and preference of personal mobility. Tractor segment posted robust growth of 50% YoY with strong demand, improved liquidity and low base in previous year. 2W and PV segment volumes grew by 10% and 12% YoY respectively driven by pent up demand and shift towards personal mobility. The demand sentiment remained strong both in urban as well as in rural areas. Export also contributed significantly in 2Ws volume growth. 3W and CV segment continued to remain dampener with decline of 35% and 11% YoY decline respectively. However, the OEMs expect both the segments to revive from 1HFY22.

SUBROS

ACCUMULATE

08-Feb-21

The company posted strong operating performance backed by strong volumes in passenger car and Home AC segment. The company continues to have healthy demand for new launches by OEMs. The management expects auto industry demand scenario may settle down post festive season though positive momentum would continue going ahead. However, the company's outlook remains strong on account of order book especially in PV, Home AC and Railway segments. Going ahead, the Home AC segment is expected to grow at 12-15% YoY. Considering RM inflation, the company may see a dent on margins, although cost optimization measures may offset some of the impact. We largely maintain our EPS estimates for FY22e. We value SUBROS at 19x FY22e EPS to arrive at target price of Rs.382 and maintain ACCUMULATE.

RBI Credit Policy

MACRO

06-Feb-21

The Monetary Policy Committee in line with our expectations decided to maintain status quo. The rates remained unchanged under an accommodative stance. Repo rate remained at 4.00 while the reverse repo and Marginal Standing facility stood at 3.35 and 4.25 respectively. The MPC has decided to continue with the accommodative stance as long as necessary to revive growth and mitigate the impact of Covid-19. Consumer Price Index in the country eased to 4.59% in the month of December'2020 opposed to 6.93% in November'2020. The MPC expects the short term inflation trajectory to further come down owing to great kharif harvests and good prospects of rabi. Past rate cuts have transfused enormous liquidity in the market. Such high liquid markets often pave way for the inflation to inch upwards and hence the MPC has decided to phase the CRR normalisation in 2 phases in March and May respectively. The MPC also noted that the growth has highly improved in the country. The capacity utilisation in the manufacturing sector rose to 63.3percent in Q2 2021 from 47.3 percent in Q1. Rural economy has been stronger on good prospects of agriculture and the urban has seen picking up momentum. On that note the GDP for the Financial Year 22 has been expected to be at 10.5%.

ALKEM

ACCUMULATE

06-Feb-21

The overall revenue for ALKEM grew by 6.2% YoY to Rs 2318 cr mainly due to better performance across different segments. The margin has shown improvement on account of cost saving coupled with productivity improvement. In key therapies like cardiac and anti-diabetic, the company is ahead of market in term of YoY growth. Trade generic business has outperformed branded business significantly while antibiotic segment has remained muted however normalcy can be seen in the next quarter. Company has received marketing authorization for DCGI for its biosimilar and expects to launch in domestic market in coming quarters. The US business is expected to grow on account of new launches in the next quarter. We maintain our rating to ACCUMULATE with a target price of Rs. 3315 at 15x FY22E EV/EBITDA.

GILLETTE

ACCUMULATE

05-Feb-21

In 2QFY21, GILLETTE posted a mixed set of numbers. Sales increased by 13.3% YoY to Rs. 520 cr. and PAT grew by 15% YoY to Rs. 82 cr. Gross margin decline was on account of higher COGS while EBITDA margin expansion was on account of steep decline in Ad & P spends and other expenses. Going forward, we expect demand from both the Grooming and Oral care segment to improve on the back of improvement in consumer sentiments, strong retail execution, product portfolio and brand equity will also aid in getting back growth. On the Margin front we expect some pressure in gross margin due higher COGS while company's cost saving measures and strong hold on pricing are expected to favor EBITDA margin. Thus, considering above statements we maintain our NEUTRAL rating with an increased target price of Rs. 6244. (Earlier Rs. 5913)

- ☐ US markets closes positive with gains of 0.75%
- ☐ SGX Nifty Fut trades at 15166 up 24 pts at 7.25 am IST today
- ☐ Asia trades in green: Nikkei +131 pts; HangSeng +30 pts
- ☐ Crude surging highs: Brent 61\$/bbl; WTI Nymex 58.33 \$/bbl
- ☐ Bullions positive: Gold 1838 \$/oz; Silver 27.54 \$/bbl
- ☐ Dollar index weaken 90.86 levels

- ☐ US markets keeps surging high for 6th straight day
- ☐ FRL-RIL deal: Status Quo lifted; FRL can go ahead for final nod
- ☐ Tesla fuelled surge in Bitcoin; Accepts Bitcoin as payment for selected models

- ☐ Y'day in cash seg: FIIs bought 1877 crs; DIIs sold 505 crs
- ☐ Y'day FIIs bought 491 crs in Index Futures
- ☐ Index Futures: FIIs add 171 longs; reduced 4843 shorts
- ☐ FIIs net long exposure at 64% in Index Futures
- ☐ Index Options Buying: FIIs add 1557 Calls; 22984 Puts
- ☐ Index Options Selling: FIIs add 21536 Calls; 32663 Puts
- ☐ In Feb: NiftyBank up 17%; Nifty up 10.8%; Nasdaq up 7%
- ☐ In 2021: NiftyBank up 15%; Nifty up 8.8%; Nasdaq up 8.6%

- ☐ Sector rotation may continue, many stocks due for bounce
- ☐ Buy on Dips still getting rewarded
- ☐ Nifty has started expansion towards 15,500-16,000 mark
- ☐ Nifty's base now moves up from 14850 to 15000

- ☐ Y'day evening results: NMDC, TorrentPh, BPCL, Suntv
- ☐ Results today: AdaniPorts, TataSteel, Abbott, Berger, MuthootFin, TorrentPower
- ☐ BPCL: Optg profit margins 6.4%; PAT up 120%; Mktg vols higher YoY by 0.73%
- ☐ TorrentPharma: Rev up 1.5%; Margins 30.4%; PAT 297 crs vs 251 crs YoY
- ☐ SunTv: Rev up 17%; Margins falls to 61.1%; Ad rev falls 10% vs est 3-4% decline
- ☐ NMDC: Rev up 45%; Optg Profit up 74%
- ☐ Jindal Stainless Hisar: PAT up 229%
- ☐ Good Q3 earnings: Balaji Amines, GalaxySurf, StarCement, EIDParry
- ☐ Weak Q3 earnings: Sparc, Astrazeneca
- ☐ Life Insurance cos: New biz prem grows 3.7% in Jan vs 2.8% dip in Dec.

Stock In News

- ❑ **FPIs' holding in NSE-listed companies hit 5-year high in December quarter on robust inflow:** In terms of value, FPIs ownership reached an all-time high of Rs 41.83 lakh crore as of December 2020, up 29 percent from Rs 32.47 lakh crore in the preceding quarter, on account of rally in equity markets.
- ❑ **BPCL:** Q3FY21 (Standalone, QoQ) Revenue up 33.1% at Rs 66,731.4 crore Vs Rs 50,146.4 crore Net profit up 23.6% at Rs 2,777.6 crore Vs Rs 2,247.2 crore Ebitda up 11.8% at Rs 4,305.8 crore Vs Rs 3,851.2 crore Ebitda margins at 6.5% Vs 7.7% Has declared interim dividend of Rs 16 per share of face value Rs 10 each for the Financial Year 2020-21.
- ❑ **Torrent Pharma:** Q3FY21 (Consolidated, YoY) Revenue up 1% at Rs 1,995 crore Vs Rs 1,966 crore Net profit up 18% at Rs 297 crore Vs Rs 251 crore Ebitda up 12% at Rs 607 crore Vs Rs 540 crore Ebitda Margins at 30.4% Vs 27.5% Has announced interim dividend of Rs 20 per share. Gross Margins at 72%
- ❑ **Sun TV:** Q3FY21 (Consolidated, YoY) Revenue up 17% at Rs 994.1 crore Vs Rs 847.8 crore Net profit up 16% at Rs 445.5 crore Vs Rs 384.7 crore Ebitda up 2% at Rs 608.1 crore Vs Rs 595.3 crore Ebitda Margins at 61.2% Vs 70.2% Subscription Revenues up 3% at Rs 424 crore Vs Rs 411.8 crore Has announced interim dividend of Rs 5 per share.
- ❑ **NMDC:** Q3FY21 (Consolidated, YoY) Revenue up 45% at Rs 4,355.1 crore Vs Rs 3,006.4 crore Net profit up 53% at Rs 2,108 crore Vs Rs 1,375 crore Ebitda up 74% at Rs 2,766.8 crore Vs Rs 1,590.1 crore Ebitda Margins at 63.5% Vs 52.9%
- ❑ **Balkrishna Industries:** Q3FY21 (Consolidated, YoY) Revenue up 31% at Rs 1,509.2 crore Vs Rs 1,155.8 crore Net profit up 45% at Rs 325.1 crore Vs Rs 223.8 crore Ebitda up 39% at Rs 479.6 crore Vs Rs 346.1 crore Ebitda margins at 31.8% Vs 29.9% Has declared third interim dividend of Rs 5 per share
- ❑ **Galaxy Surfactants:** The company's Q3FY21 net profit rose 77.59 percent to Rs 85.23 crore from Rs 47.99 crore, while revenue increased 7.9 percent to Rs 674.70 crore from Rs 625.89 crore, YoY.
- ❑ **VST Tillers Tractors:** Has announced a technical supplier partnership with Monarch tractors. The two companies have worked collaboratively for over a year on the technical development of tractor hardware for the first series of Monarch Tractors.
- ❑ **Crompton Greaves Consumer Electricals:** Promoter Amalfiaco Holdings plans to sell 2.83 crore shares or 4.5% of the total equity through a block deal. The floor price of the deal is Rs 387 per share which is a 5.2% discount to Monday's closing price, as per the terms of the deal accessed by Bloomberg News. As per the December quarter shareholding pattern, Amalfiaco held 11.42% stake in the company.
- ❑ **Reliance Industries:** Delhi High Court division bench stayed the order of the single judge in Future Retail Vs Amazon case. Order pronounced by Delhi High Court division bench of Chief Justice DN Patel and Justice Jyoti Singh. Future Retail had challenged the single judge February 2 order directing a status quo on Future Retail- Reliance Retail deal.
- ❑ **Kirloskar Ferrous Industries:** Renovation of the assets relating to pig iron plant situated at Paramenahally Village in Karnataka has been completed and manufacturing operations of pig iron commenced on February 8, 2021 after obtaining necessary approvals from government authorities.

Red: Negative Impact **Green:** Positive Impact **Black :** Neutral.

Management Concall**MAGMA Q3FY21 Concall Highlights**

- ☐ Moratorium portfolio where customers have not paid even 1 EMI till Dec-20 stands at Rs 280 Cr (1.9% of AUM).
- ☐ Pro-forma NPA is expected to decline in Q4FY21.
- ☐ Management expects the reduction in cost of funds to continue.
- ☐ Out of the Opex reduction of approximately 70 bps in 9MFY21 about 40 bps is expected to sustain.
- ☐ Company has received firm interest from few investors in the capital raise process for MAGMA MDI and hopes to reach definitive alignment in the foreseeable future.
- ☐ New tractor disbursements have been slow but normalization is expected in next 1 or 2 quarter.
- ☐ Collection efficiency in SME segment has now reached the Pre-Covid levels.
- ☐ Management believes that they will be able to carry some portion of the Covid provision into FY22.
- ☐ In case of restructuring management only gave the extension of tenure which is within the allowed norms of 2 years.
- ☐ Total disbursement till date under ECLGS is Rs 325 Cr out of which Rs 110 Cr is from SME book and balance is ABF book. Disbursement were done only after the due diligence were done.
- ☐ Disbursement is expect to keep improving quarter and quarter and AUM is expected to be stabilize for Q4FY21 at the current numbers and grow at 10%-15% in FY22.
- ☐ Combined ratio is insurance business is on declining trend and is aiming to take combined ratio to 103%-104% in next 3-4 years of time.
- ☐ On the ABF business management does not have endeavour to repossess everything and resell but they want customers to come back and release the assets. The release % currently stands at 65% and management expect even better performance in Q4FY21. The ball park number that management looks at is around 75%.

Britannia Q3FY21 Concall Highlights:

- ☐ Robust General Trade & rural growth has been seen this quarter, however Modern Trade & Institutional business remained muted.
- ☐ Diversification of purchase basket as unlocking has happened. Pantry stocking has also been normalized.
- ☐ 36 quarter of straight Market share gain for the company.
- ☐ Company is focusing on distribution & marketing, innovation and cost optimization.
- ☐ Increase in direct reach to 22.9 lakh outlets in Dec 20.
- ☐ Rural distribution is strong and no. of rural preferred dealers reached to 23K in Dec 20.
- ☐ Hindi belt growth has improved by around 30-60% in YTD 2020-21 as compared to YTD 2017-18. UP is the best performing among them.
- ☐ Consumption is expected to be normal in next 3-6 months.
- ☐ Most of the pillar brands such as good day, Bourbon, tiger, 50-50, Nutri choice , cake portfolio are back on track.
- ☐ Factory productivity has improved to 1.07x as compared pre covid.
- ☐ Middle East and Africa has shown healthy growth. ROW is growing at healthy pace.
- ☐ Bakery business: Bread profitability has been upward while Rusk business has shown stable growth and increase in profitability.
- ☐ Wafers have shown growth of around 30%. Salted snacks will show substantial growth in coming years.
- ☐ Dairy business: Cheese is leading the growth in Dairy while Decline in out of home consumption impacted Drinks portfolio however out of home consumption is picking up gradually.
- ☐ Growth in Drinks such as Lassi and milk shakes has started to bounce back. Lower milk prices have also helped in increasing the profitability of dairy business.
- ☐ Company expects increase in revenue as distribution channels are back to normal.
- ☐ For Q3, E-commerce is at 1% of contribution while modern trade is 10% of the contribution.
- ☐ Capex is expected to be around Rs 200 cr for FY21.
- ☐ Company has accelerated the pace of innovation and new launches. It is innovating in products such as cakes and other affordable products so as to increase volume sales.
- ☐ Company is doing IT transformation project which will be concluded in next 3-6 months.
- ☐ Steep inflation in palm oil in Q3. On flour and milk there is deflation of 7% and 15% respectively while on sugar and RPO inflation of 1% and 25% respectively.
- ☐ Company is expecting to maintain the margin in the coming quarters.

GODREJCP 3QFY21 Concall Highlights:

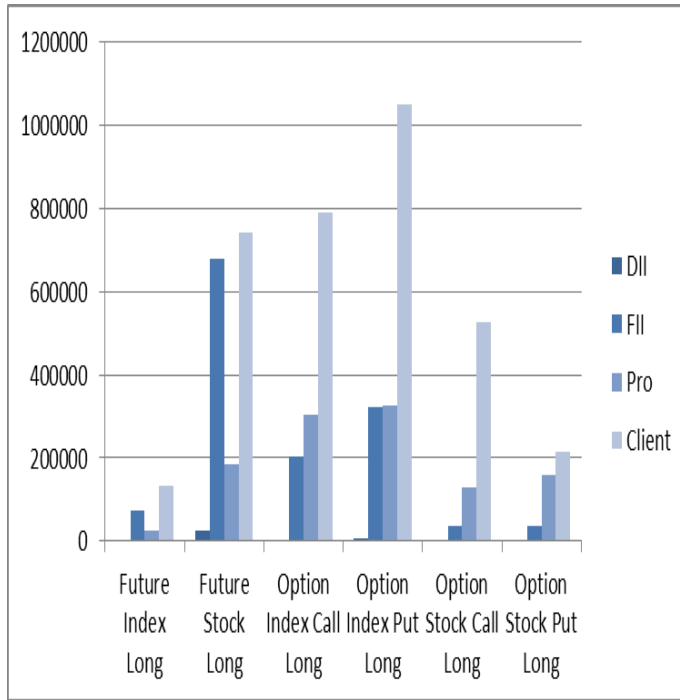
- ❑ As per the Management, the company will continue to play in the sanitizer category and will bring some amount of innovation in the category.
- ❑ In HI category premium category which are Aerosol and electric are growing well for the company and expect the momentum to continue led by more disruptive launches However, burning format is witnessing competitive intensity from the unorganised players.
- ❑ As per Management, Natural incense stick strategy has not done well but the company will continue to innovate the same with micro marketing strategy coupled with disruptive launches and increased penetration.
- ❑ The Company's saliency of Gold flash has been increased while in terms of machine traded has traded 3 cr. machine and expect to trade another 1 cr. in short term also during the quarter the company witnessed double digit sales growth in electric portfolio.
- ❑ As per Management, wet wipes are 14-15% of overall Indonesia business but are facing competitive intensity from new players. The company would have clocked more 4-5% growth if there would not have been the competition issue.
- ❑ The Management, expect growth rate in Africa and USA (partnership with Walmart in US) to sustain for medium term.
- ❑ The Management expect to maintain margin in medium term led by calibrated pricing approach and cost saving program undertaken by the company.
- ❑ The Company is actively looking for merger and acquisition in India, Australia and Bangladesh.
- ❑ The Management expects soaps to continue gaining market shar led by various micro initiatives and expect the steady performance to continue in FY22.
- ❑ The Management expect Latin America business to continue its steady to strong performance in medium to long term.
- ❑ As per Management GT roll out in Indonesia 2 years back stood at 85000 outlets and now reaching to 120000 outlets but intend to reach out to 200000 outlets.

BULK DEAL						
EXCHANGE	Date	SECURITY CODE	CLIENT NAME	DEAL TYPE	QUANTITY	PRICE
BSE	08-02-2021	APOLLOTRI	SAKET AGRAWAL	S	1,86,429	915
BSE	08-02-2021	ARCHITORG	BEELINE MERCHANT BANKING PRIVATE LIMITED	B	1,91,893	24.84
BSE	08-02-2021	ARCHITORG	ANSU INVESTMENT	S	1,18,056	24.9
BSE	08-02-2021	BGJL	MEHUL KANUBHAI VAGHELA	B	21,273	69.1
BSE	08-02-2021	BGJL	MEHUL KANUBHAI VAGHELA	S	59,976	67.21
BSE	08-02-2021	BHARATAGRI	VANSH HIREN NAGAR	S	31,161	161.61
BSE	08-02-2021	CBPL	AMRUTLAL GORDHANDAS THOBHANI	S	44,000	44.74
BSE	08-02-2021	ELLORATRAD	GAURAV CHANDRAKANT SHAH	S	10,000	89.03
BSE	08-02-2021	KARNAVATI	NIKHIL M SHAH (HUF)	S	2,31,418	18.9
BSE	08-02-2021	KARNAVATI	MAHESH K SHAH HUF	S	4,23,750	18.85
BSE	08-02-2021	KARNAVATI	BEELINE MERCHANT BANKING PRIVATE LIMITED	B	6,58,001	18.87
BSE	08-02-2021	MAYUKH	RAMABEN NANALAL MEHTA	S	18,000	15.25
BSE	08-02-2021	MEGASTAR	BEELINE MERCHANT BANKING PRIVATE LIMITED	B	1,60,000	27.86
BSE	08-02-2021	MEGASTAR	NIKHIL M SHAH (HUF)	S	52,000	27.9
BSE	08-02-2021	OZONEWORLD	VIRALKUMAR RASIKBHAI PATEL	B	27,986	91.43
BSE	08-02-2021	OZONEWORLD	VIRALKUMAR RASIKBHAI PATEL	S	11,916	91.77
BSE	08-02-2021	SHARIKA	BEELINE MERCHANT BANKING PRIVATE LIMITED	B	5,34,000	31.07
BSE	08-02-2021	SHARIKA	SUFAL INVESTMENT	S	96,000	31.25
BSE	08-02-2021	SHARIKA	ANSU INVESTMENT	S	3,66,000	31
BSE	08-02-2021	SMGOLD	SHELLY MEET THAKKAR	B	1,50,000	19.49
BSE	08-02-2021	SMIFS	MINAL BHARAT PATEL	B	50,000	44
BSE	08-02-2021	SMIFS	S RAJAN	S	30,030	44
BSE	08-02-2021	SSPNFIN	ASHOK KUMAR SINGH	B	48,000	24.85
BSE	08-02-2021	SSPNFIN	RAMESH R VYAS	S	48,000	24.86
BSE	08-02-2021	SSPNFIN	ASHOK KUMAR SINGH	B	84,000	24.98
BSE	08-02-2021	SSPNFIN	RAMESH RAMSHANKAR VYAS	S	32,000	25.2
BSE	08-02-2021	SSPNFIN	RAJESH RAMANLAL KAPADIA	S	52,000	24.48
BSE	08-02-2021	SUPRBPA	B B COMMERCIAL LTD	B	25,000	12.5
BSE	08-02-2021	SUPRBPA	B B COMMERCIAL LTD	S	35,000	11.76
BSE	08-02-2021	THIRDFIN	BANSHIDHAR VYAPAAR PRIVATE LIMITED .	S	12,730	29.68
BSE	08-02-2021	VMV	NAMRATA KAUSHIK VYAS	B	30,000	29.85
BSE	08-02-2021	VMV	ASHOK KUMAR SINGH	S	30,000	29.63

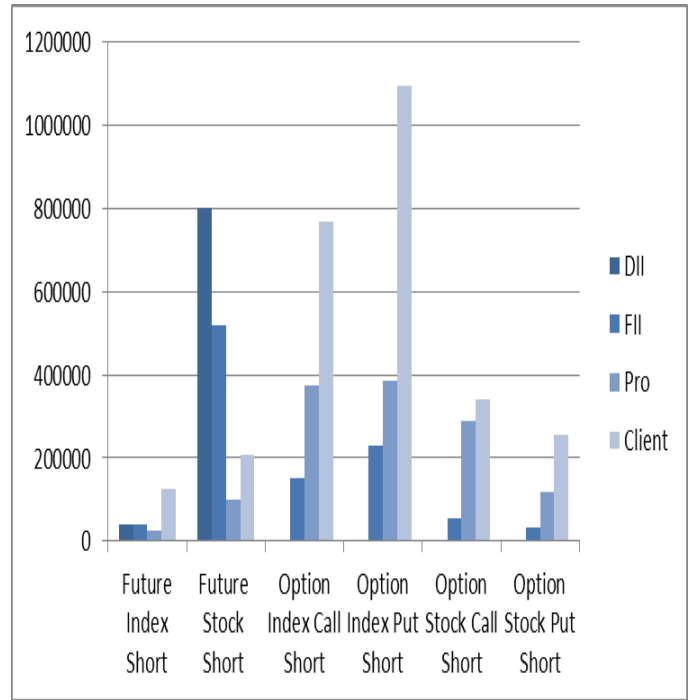
Corporate Action					
EXCHANGE	SECURITY CODE		EX- DATE	PURPOSE	RECORD DATE
BSE	506395	COROMANDEL	10-02-2021	Interim Dividend - Rs. - 6.0000	11-Feb-21
BSE	532889	KPRMILL	10-02-2021	Interim Dividend - Rs. - 3.7500	11-Feb-21
BSE	531213	MANAPPURAM	10-02-2021	Interim Dividend - Rs. - 0.6500	11-Feb-21
BSE	500459	PGHH	10-02-2021	Interim Dividend - Rs. - 85.0000	11-Feb-21
BSE	532348	SUBEX	10-02-2021	Interim Dividend - Rs. - 0.5000	11-Feb-21
BSE	532349	TCI	10-02-2021	Interim Dividend - Rs. - 1.2000	11-Feb-21

PARTICIPANT WISE OPEN INTEREST

Long Position

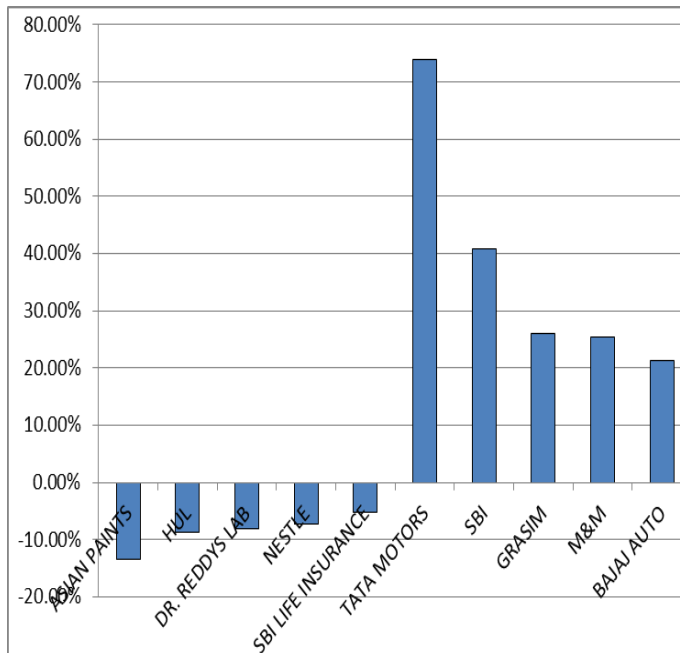


Short Position

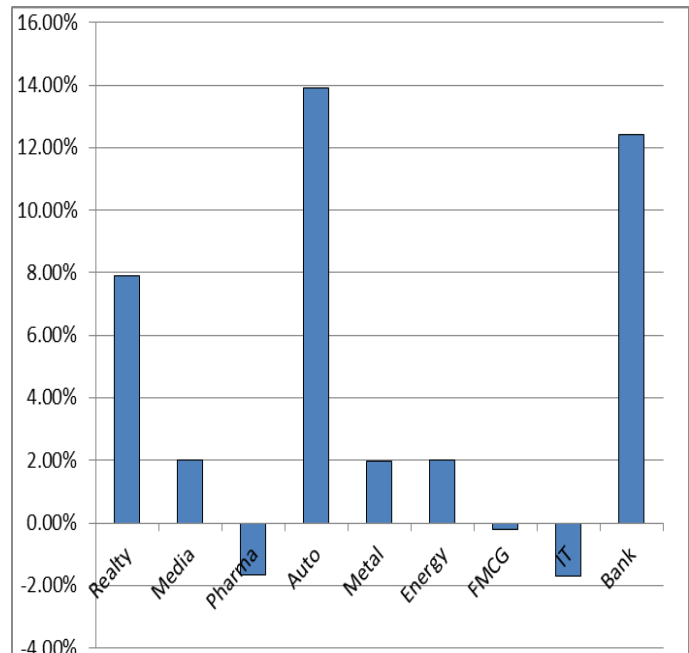


MARKET MOVERS (1 MONTH CHANGE)

Nifty Movers



NSE Sectoral Indices Performance



Result Calendar Q3FY21

BSE Code	Company Name	Result Date	BSE Code	Company Name	Result Date
530499	AKCAPIT	27-Jan-21	502330	ANDHRAPAP	28-Jan-21
532215	AXISBANK	27-Jan-21	543235	ANGELBRKG	28-Jan-21
500041	BANARISUG	27-Jan-21	512091	ANSHNCO	28-Jan-21
532134	BANKBARODA	27-Jan-21	523694	APCOTEXIND	28-Jan-21
539399	BELLACASA	27-Jan-21	539301	ARVSMART	28-Jan-21
530803	BHAGIL	27-Jan-21	532853	ASAHISONG	28-Jan-21
518017	BHEEMACEM	27-Jan-21	520119	ASAL	28-Jan-21
532483	CANBK	27-Jan-21	590122	ASHIKACR	28-Jan-21
508814	COSMOFILMS	27-Jan-21	526847	ASHSI	28-Jan-21
504908	DUNCANENG	27-Jan-21	540611	AUBANK	28-Jan-21
531162	EMAMILTD	27-Jan-21	526849	BANARBEADS	28-Jan-21
500174	GLFL	27-Jan-21	500049	BEL	28-Jan-21
542857	GREENPANEL	27-Jan-21	512404	BENGALS	28-Jan-21
517288	GUJARATPOLY	27-Jan-21	512195	BENTCOM	28-Jan-21
541019	HGINFRA	27-Jan-21	531719	BHAGCHEM	28-Jan-21
500696	HINDUNILVR	27-Jan-21	500059	BINANIIND	28-Jan-21
500449	HOCL	27-Jan-21	531175	BLSINFOTE	28-Jan-21
540133	ICICIPRULI	27-Jan-21	526612	BLUEDART	28-Jan-21
530005	INDIACEM	27-Jan-21	532123	BSELINFRA	28-Jan-21
520066	JAYBARMARU	27-Jan-21	517236	CALCOM	28-Jan-21
532162	JKPAPER	27-Jan-21	519600	CCL	28-Jan-21
538837	JSTL	27-Jan-21	506365	CHEMOPH	28-Jan-21
532926	JYOTHYLAB	27-Jan-21	534758	CIGNITI	28-Jan-21
500252	LAXMIMACH	27-Jan-21	532541	COFORGE	28-Jan-21
523754	MAHEPC	27-Jan-21	500830	COLPAL	28-Jan-21
531642	MARICO	27-Jan-21	507833	COMPUPN	28-Jan-21
523828	MENONBE	27-Jan-21	533167	COROENGG	28-Jan-21
540767	NAM-INDIA	27-Jan-21	531380	CSURGSU	28-Jan-21
540173	PNBHOUSING	27-Jan-21	500480	CUMMINSIND	28-Jan-21
531768	POLYMED	27-Jan-21	532528	DATAMATICS	28-Jan-21
532011	POOJAENT	27-Jan-21	533151	DBCORP	28-Jan-21
540544	PSPPROJECT	27-Jan-21	532927	ECLERX	28-Jan-21
539978	QUESS	27-Jan-21	523127	EIHAHOTELS	28-Jan-21
532661	RML	27-Jan-21	513452	ELANGO	28-Jan-21
520075	SAMKRG	27-Jan-21	532178	ENGINEERSIN	28-Jan-21
502180	SHREDIGCEM	27-Jan-21	543243	EQUITASBNK	28-Jan-21
532143	SKMEGGPROD	27-Jan-21	540596	ERIS	28-Jan-21
530883	SUCROSA	27-Jan-21	533896	FERVENTSYN	28-Jan-21
518075	SURAJ	27-Jan-21	530077	FRSHTRP	28-Jan-21
500336	SURYAROSNI	27-Jan-21	530855	GDLEAS	28-Jan-21
530585	SWASTIKA	27-Jan-21	500171	GHCL	28-Jan-21
523558	SWISSMLTRY	27-Jan-21	509567	GOACARBON	28-Jan-21
532301	TATACOFFEE	27-Jan-21	532482	GRANULES	28-Jan-21
533158	THANGAMAYL	27-Jan-21	533282	GRAVITA	28-Jan-21
524717	TITANBIO	27-Jan-21	539522	GROVY	28-Jan-21
530045	TITANSEC	27-Jan-21	532847	HILTON	28-Jan-21
532432	UNITDSPR	27-Jan-21	500187	HSIL	28-Jan-21
526775	VALIANT	27-Jan-21	500116	IDBI	28-Jan-21
514162	WELSPUNIND	27-Jan-21	505726	IFBIND	28-Jan-21
512587	ZODJRDMDKJ	27-Jan-21	539448	INDIGO	28-Jan-21
532628	3IINFOTECH	28-Jan-21	534816	INDUSTOWER	28-Jan-21
524208	AARTIIND	28-Jan-21	517423	INTEGSW	28-Jan-21
538935	ABHIFIN	28-Jan-21	542830	IRCTC	28-Jan-21
532762	ACE	28-Jan-21	532627	JPOWER	28-Jan-21
500003	AEGISLOG	28-Jan-21	500234	KAKATCEM	28-Jan-21
506235	ALEMBICLTD	28-Jan-21	504084	KAYCEEI	28-Jan-21
526397	ALPHAGEO	28-Jan-21	532714	KEC	28-Jan-21

Result Calendar Q3FY21

BSE Code	Company Name	Result Date	BSE Code	Company Name	Result Date
517569	KEI	28-Jan-21	503657	VEERENRGY	28-Jan-21
542651	KPITTECH	28-Jan-21	511523	VEERHEALTH	28-Jan-21
505299	KPT	28-Jan-21	509055	VISAKAIND	28-Jan-21
539384	KRISHNACAP	28-Jan-21	501370	WALCHPF	28-Jan-21
540222	LAURUSLABS	28-Jan-21	532144	WELCORP	28-Jan-21
500250	LGBBROSLTD	28-Jan-21	532553	WELENT	28-Jan-21
532740	LOKESHMACH	28-Jan-21	512367	ZSHERAPR	28-Jan-21
500257	LUPIN	28-Jan-21	512291	ZSPEEDCO	28-Jan-21
532720	M&MFIN	28-Jan-21	516092	3PLAND	29-Jan-21
530537	MANRAJH	28-Jan-21	540615	7NR	29-Jan-21
521018	MARALOVER	28-Jan-21	543210	AARTISURF	29-Jan-21
532500	MARUTI	28-Jan-21	531161	ABMKNO	29-Jan-21
531319	MARUTISE	28-Jan-21	532268	ACCELYA	29-Jan-21
500282	MDRNTHR-B	28-Jan-21	523411	ADCINDIA	29-Jan-21
532892	MOTILALOFS	28-Jan-21	519183	ADFFOODS	29-Jan-21
532440	MPSLTD	28-Jan-21	531147	ALICON	29-Jan-21
504112	NELCO	28-Jan-21	513729	AROGRANITE	29-Jan-21
512522	NEPTEXP	28-Jan-21	538713	ATISHAY	29-Jan-21
524774	NGLFINE	28-Jan-21	500027	ATUL	29-Jan-21
542231	NILASPACE	28-Jan-21	539872	BAJAJHCARE	29-Jan-21
532698	NITINSPIN	28-Jan-21	524687	BASANTGL	29-Jan-21
531209	NUCLEUS	28-Jan-21	511501	BHARAT	29-Jan-21
500189	NXTDIGITAL	28-Jan-21	543208	BHARTIA	29-Jan-21
530175	ODYSSEY	28-Jan-21	506981	BLUECHIPT	29-Jan-21
532466	OFSS	28-Jan-21	500067	BLUESTARCO	29-Jan-21
530365	ORIENTBELL	28-Jan-21	541269	CHEMFABALKA	29-Jan-21
535754	ORIENTCEM	28-Jan-21	511243	CHOLAFIN	29-Jan-21
514460	OSWAYRN	28-Jan-21	500087	CIPLA	29-Jan-21
526435	PERFEPA	28-Jan-21	532339	COMPUSOFT	29-Jan-21
533179	PERSISTENT	28-Jan-21	504340	CONFINT	29-Jan-21
500331	PIDILITIND	28-Jan-21	541770	CREDITACC	29-Jan-21
509077	PRESSMN	28-Jan-21	532783	DAAWAT	29-Jan-21
500338	PRSMJOHNSN	28-Jan-21	500096	DABUR	29-Jan-21
506618	PUNJABCHEM	28-Jan-21	531306	DHPIND	29-Jan-21
532497	RADICO	28-Jan-21	532839	DISHTV	29-Jan-21
540065	RBLBANK	28-Jan-21	532868	DLF	29-Jan-21
543228	ROUTE	28-Jan-21	500124	DRREDDY	29-Jan-21
534597	RTNINFRA	28-Jan-21	500840	EIHOTEL	29-Jan-21
533122	RTNPOWER	28-Jan-21	500086	EXIDEIND	29-Jan-21
515043	SAINTGOBAIN	28-Jan-21	500620	GESHIP	29-Jan-21
540728	SAYAJIIND	28-Jan-21	532630	GOKEX	29-Jan-21
538685	SHEMAROO	28-Jan-21	506076	GRINDWELL	29-Jan-21
513605	SRIPIPES	28-Jan-21	517372	GUJINTRX	29-Jan-21
511218	SRTRANSFIN	28-Jan-21	519552	HERITGFOOD	29-Jan-21
516108	STHINPA	28-Jan-21	530055	HRMNYCP	29-Jan-21
506655	SUDARSCHEM	28-Jan-21	507438	IFBAGRO	29-Jan-21
530953	SUNILAGR	28-Jan-21	532636	IIFL	29-Jan-21
512527	SUPER	28-Jan-21	532187	INDUSINDBK	29-Jan-21
532904	SUPREMEINF	28-Jan-21	530965	IOC	29-Jan-21
530239	SUVEN	28-Jan-21	500380	JKLAKSHMI	29-Jan-21
531432	SYTIXSE	28-Jan-21	506522	JLMORI	29-Jan-21
507785	TAINWALCHM	28-Jan-21	505750	JOSTS	29-Jan-21
500770	TATACHEM	28-Jan-21	532532	JPASSOCIAT	29-Jan-21
539658	TEAMLEASE	28-Jan-21	542866	JSGLEASING	29-Jan-21
512011	TEATIME	28-Jan-21	533148	JSWENERGY	29-Jan-21
532343	TVSMOTOR	28-Jan-21	535648	JUSTDIAL	29-Jan-21
532478	UBL	28-Jan-21	513693	KAJARIR	29-Jan-21

Result Calendar Q3FY21

BSE Code	Company Name	Result Date	BSE Code	Company Name	Result Date
539276	KAYA	29-Jan-21	532373	WEPSOLN	29-Jan-21
506528	KELENRG	29-Jan-21	538382	WESTLEIRES	29-Jan-21
507948	KEYCORP	29-Jan-21	590073	WHEELS	29-Jan-21
523207	KOKUYOCMLN	29-Jan-21	532300	WOCKPHARMA	29-Jan-21
500235	KSL	29-Jan-21	523105	ZPPOLYSA	29-Jan-21
539524	LALPATHLAB	29-Jan-21	540902	AMBER	30-Jan-21
500253	LICHSGFIN	29-Jan-21	513117	AMFORG	30-Jan-21
517449	MAGNAELQ	29-Jan-21	542460	ANUP	30-Jan-21
540768	MAHLOG	29-Jan-21	532797	AUTOIND	30-Jan-21
531213	MANAPPURAM	29-Jan-21	508933	AYMSYNTEX	30-Jan-21
523782	MITSHI	29-Jan-21	542057	BCPL	30-Jan-21
539229	MRSS	29-Jan-21	500069	BNKCAP	30-Jan-21
531287	NATPLASTI	29-Jan-21	532931	BURNPUR	30-Jan-21
506532	NITTAGELA	29-Jan-21	530427	CHOKSI	30-Jan-21
530219	NUTRICIRCLE	29-Jan-21	531210	COLINZ	30-Jan-21
541301	ORIENTELEC	29-Jan-21	538922	COSYN	30-Jan-21
532742	PAUSHAKLTD	29-Jan-21	532610	DWARKESH	30-Jan-21
540901	PRAXIS	29-Jan-21	531533	ECOM	30-Jan-21
521149	PRIMEURB	29-Jan-21	530705	FLORATX	30-Jan-21
524037	RAMAPHO	29-Jan-21	532285	GEOJITFSL	30-Jan-21
532988	RANEENGINE	29-Jan-21	517300	GIPCL	30-Jan-21
532024	RBGUPTA	29-Jan-21	532734	GPIL	30-Jan-21
523650	REDEXPR	29-Jan-21	524669	HESTERBIO	30-Jan-21
533552	RUPA	29-Jan-21	532041	HINDBIO	30-Jan-21
526521	SANGHIIND	29-Jan-21	532174	ICICIBANK	30-Jan-21
539574	SCL	29-Jan-21	539437	IDFCFIRSTB	30-Jan-21
507984	SERIND	29-Jan-21	517370	INCAP	30-Jan-21
532643	SGFL	29-Jan-21	500220	JASCH	30-Jan-21
540425	SHANKARA	29-Jan-21	500223	JCTLTD	30-Jan-21
538897	SHRINIWAS	29-Jan-21	524518	KREBSBIO	30-Jan-21
532498	SHRIRAMCIT	29-Jan-21	511048	KUSUMEL	30-Jan-21
539833	SICLTD	29-Jan-21	531221	MAYURFL	30-Jan-21
532725	SOLARINDS	29-Jan-21	513496	MEWATZI	30-Jan-21
534680	SRGHFL	29-Jan-21	511766	MUTHTFN	30-Jan-21
513517	STEELCAS	29-Jan-21	531265	PROGREXV	30-Jan-21
517168	SUBROS	29-Jan-21	530517	RELAXO	30-Jan-21
524542	SUKHJITS	29-Jan-21	531539	RISHDIGA	30-Jan-21
514211	SUMEETINDS	29-Jan-21	500387	SHREECEM	30-Jan-21
520056	SUNCLAYLTD	29-Jan-21	531169	SKPSEC	30-Jan-21
531433	SUNGOLD	29-Jan-21	541890	SPACEINCUBA	30-Jan-21
524715	SUNPHARMA	29-Jan-21	531499	SYBLY	30-Jan-21
512359	SWORDEGE	29-Jan-21	524204	TEEAI	30-Jan-21
532390	TAJGVK	29-Jan-21	539871	THYROCARE	30-Jan-21
500570	TATAMOTORS	29-Jan-21	532410	TRANSCOR	30-Jan-21
570001	TATAMTRDVR	29-Jan-21	532966	TWL	30-Jan-21
532755	TECHM	29-Jan-21	500231	UMANGDAIR	30-Jan-21
505400	TEXINFRA	29-Jan-21	506690	UNICHEMLAB	30-Jan-21
533326	TEXRAIL	29-Jan-21	541503	UNICK	30-Jan-21
531771	TOWASOK	29-Jan-21	531390	UPSURGE	30-Jan-21
509003	TRANOCE	29-Jan-21	531650	VAXHS	30-Jan-21
506680	TRELCH-B	29-Jan-21	533339	ZENTEC	30-Jan-21
532477	UNIONBANK	29-Jan-21	505163	ZFSTEERING	30-Jan-21
512070	UPL	29-Jan-21	530899	ASIAPAK	31-Jan-21
543238	UTIAMC	29-Jan-21	524634	ALUFLUOR	01-Feb-21
532156	VAIBHAVGBL	29-Jan-21	506248	AMNPLST	01-Feb-21
500295	VEDL	29-Jan-21	500870	CASTROLIND	01-Feb-21
533252	WELINV	29-Jan-21	506395	COROMANDEL	01-Feb-21

Result Calendar Q3FY21

BSE Code	Company Name	Result Date	BSE Code	Company Name	Result Date
539405	DITCO	01-Feb-21	500690	GSFC	02-Feb-21
526574	ENTRINT	01-Feb-21	500010	HDFC	02-Feb-21
511716	ESCORTSFIN	01-Feb-21	509675	HIL	02-Feb-21
500136	ESTER	01-Feb-21	542772	IIFLWAM	02-Feb-21
500940	FINOLEXIND	01-Feb-21	504810	INFORTEC	02-Feb-21
523696	FORTISMLR	01-Feb-21	538835	INTELLECT	02-Feb-21
531375	GCCLINP	01-Feb-21	530519	INTERFAC	02-Feb-21
518029	GSCLCEMENT	01-Feb-21	500214	IONEXCHANG	02-Feb-21
509597	HARDCAS	01-Feb-21	506161	ISHWATR	02-Feb-21
531129	INANI	01-Feb-21	507794	KHAICHEM	02-Feb-21
531505	INDERGR	01-Feb-21	531633	LINCOPH	02-Feb-21
500165	KANSAINER	01-Feb-21	500262	MAFATLAFIN	02-Feb-21
535387	LAKHOTIA	01-Feb-21	526251	MIDEASTP	02-Feb-21
540702	LASA	01-Feb-21	526891	MKTCREAT	02-Feb-21
505320	LYNMC	01-Feb-21	532362	NAGPI	02-Feb-21
523704	MASTEK	01-Feb-21	524558	NEULANLAB	02-Feb-21
500109	MRPL	01-Feb-21	500730	NOCIL	02-Feb-21
532944	ONMOBILE	01-Feb-21	512626	ORBTXP	02-Feb-21
538646	QGO	01-Feb-21	506579	ORIENTCQ	02-Feb-21
532987	RBL*	01-Feb-21	523642	PIIND	02-Feb-21
500111	RELCAPITAL	01-Feb-21	514300	PIONEEREMB	02-Feb-21
500390	RELINFRA	01-Feb-21	532933	PORWAL	02-Feb-21
531201	SHILCTECH	01-Feb-21	532369	RAMCOIND	02-Feb-21
532348	SUBEX	01-Feb-21	520111	RATNAMANI	02-Feb-21
521200	SURYALAXMI	01-Feb-21	519260	SANWARIA	02-Feb-21
539406	SWAGTAM	01-Feb-21	502175	SAURASHCEM	02-Feb-21
538987	TALBROSENG	01-Feb-21	531794	SESHACHAL	02-Feb-21
533655	TRITURBINE	01-Feb-21	530017	SIL	02-Feb-21
514236	TTLEL	01-Feb-21	533018	SIMPLXMIL	02-Feb-21
532354	VIRGOGLOB	01-Feb-21	533019	SIMPLXPAP	02-Feb-21
532893	VTMLTD	01-Feb-21	503811	SIYSIL	02-Feb-21
531335	ZYDUSWELL	01-Feb-21	531359	SRAMSET	02-Feb-21
532331	AJANTPHARM	02-Feb-21	506105	STANROS	02-Feb-21
531409	ALCHCORP	02-Feb-21	500800	TATACONSUM	02-Feb-21
506767	ALKYLAMINE	02-Feb-21	501301	TATAINVEST	02-Feb-21
531681	AMARDEE	02-Feb-21	539518	UDAYJEW	02-Feb-21
531991	AMRAAGRI	02-Feb-21	524200	VINATIORGA	02-Feb-21
542066	ATGL	02-Feb-21	538268	WONDERLA	02-Feb-21
507944	BAJAIST	02-Feb-21	512245	ZNIVITRD	02-Feb-21
500038	BALRAMCHIN	02-Feb-21	531978	AMBIKCO	03-Feb-21
540073	BLS	02-Feb-21	500877	APOLLLOTYRE	03-Feb-21
530249	BRIDGESE	02-Feb-21	542484	ARVINDFASN	03-Feb-21
524440	CAMEXLTD	02-Feb-21	533229	BAJAJCON	03-Feb-21
507486	CAPRO	02-Feb-21	532454	BHARTIARTL	03-Feb-21
513375	CARBORUNIV	02-Feb-21	539290	BINDALAGRO	03-Feb-21
500280	CENTENKA	02-Feb-21	532400	BSOFT	03-Feb-21
532443	CERA	02-Feb-21	517421	BUTTERFLY	03-Feb-21
522295	CONTROLPR	02-Feb-21	508571	COCHMAL	03-Feb-21
500119	DHAMPURSUG	02-Feb-21	532210	CUB	03-Feb-21
507717	DHANUKA	02-Feb-21	500645	DEEPAKFERT	03-Feb-21
540699	DIXON	02-Feb-21	500089	DICIND	03-Feb-21
517437	DUTRON	02-Feb-21	531953	GCCL	03-Feb-21
500135	EPL	02-Feb-21	532764	GEECEE	03-Feb-21
500495	ESCORTS	02-Feb-21	540062	GOLDENCREST	03-Feb-21
541546	GAYAHWS	02-Feb-21	526717	GOPALA	03-Feb-21
539725	GOKULAGRO	02-Feb-21	508486	HAWKINCOOK	03-Feb-21
538979	GRNLAMIND	02-Feb-21	513599	HINDCOPPER	03-Feb-21

Result Calendar Q3FY21

BSE Code	Company Name	Result Date	BSE Code	Company Name	Result Date
539724	HYPERSOFT	03-Feb-21	500104	HINDPETRO*	04-Feb-21
532745	INDICAP	03-Feb-21	517174	HONAUT	04-Feb-21
505358	INTEGRAEN	03-Feb-21	532835	ICRA	04-Feb-21
522263	JMCPROJECT	03-Feb-21	524494	IPCALAB	04-Feb-21
532741	KAMDHENU	03-Feb-21	536493	JK AGRI	04-Feb-21
532889	KPRMILL	03-Feb-21	500239	KGDENIM	04-Feb-21
539408	KUBERJI	03-Feb-21	543240	LIKHITHA	04-Feb-21
539927	LIKHAMI	03-Feb-21	540704	MATRIMONY	04-Feb-21
538962	MINDACORP	03-Feb-21	524709	NACLIND	04-Feb-21
532376	MRO-TEK	03-Feb-21	508941	PANCARBON	04-Feb-21
532952	NAHARCAP	03-Feb-21	522205	PRAJIND	04-Feb-21
523391	NAHARPOLY	03-Feb-21	500337	PRIMESECU	04-Feb-21
500296	NAHARSPING	03-Feb-21	532503	RAJPALAYAM	04-Feb-21
539332	NAVKARCORP	03-Feb-21	590051	SAKSOFT	04-Feb-21
516082	NRAGRINDQ	03-Feb-21	500112	SBIN	04-Feb-21
500317	OSWALAGRO	03-Feb-21	519031	SHAHFOOD	04-Feb-21
524820	PANAMAPET	03-Feb-21	590128	SHREETULSI	04-Feb-21
500459	PGHH	03-Feb-21	512589	SITAENT	04-Feb-21
539150	PNCINFRA	03-Feb-21	531548	SOMANYCERA	04-Feb-21
542907	PRINCEPIPE	03-Feb-21	532221	SONATSOFTW	04-Feb-21
509220	PTL	03-Feb-21	524667	SOTL	04-Feb-21
500260	RAMCOCEM	03-Feb-21	521234	SRINACHA	04-Feb-21
532370	RAMCOSYS	03-Feb-21	500403	SUNDRMFAST	04-Feb-21
532841	SAHYADRI	03-Feb-21	519483	TAIND	04-Feb-21
512161	SECURKLOUD	03-Feb-21	500400	TATAPOWER	04-Feb-21
512529	SEQUENT	03-Feb-21	500251	TRENT	04-Feb-21
503229	SIMPLXREA	03-Feb-21	523387	TRITON	04-Feb-21
540673	SIS	03-Feb-21	532444	TSPIRITUAL	04-Feb-21
505650	SKYLMILAR	03-Feb-21	507747	TTKHEALTH	04-Feb-21
513418	SMFIL	03-Feb-21	532867	V2RETAIL	04-Feb-21
532782	SUTLEJTEX	03-Feb-21	532090	VANDANA	04-Feb-21
532349	TCI	03-Feb-21	533023	WABCOINDIA	04-Feb-21
532315	TELESYS	03-Feb-21	505537	ZEEL	04-Feb-21
500411	THERMAX	03-Feb-21	503624	ZSVARAJT	04-Feb-21
500414	TIMEX	03-Feb-21	503622	ZSVTRADI	04-Feb-21
532356	TRIVENI	03-Feb-21	532668	AURIONPRO	05-Feb-21
533156	VASCONEQ	03-Feb-21	522004	BATLIBOI	05-Feb-21
523261	VENKYS	03-Feb-21	543253	BECTORFOOD	05-Feb-21
507880	VIPIND	03-Feb-21	500825	BRITANNIA	05-Feb-21
517399	VXLINSTR	03-Feb-21	530307	CHAMANSEQ	05-Feb-21
526921	21STCENMGM	04-Feb-21	504973	CHOLAHLDNG	05-Feb-21
533096	ADANIPOWER	04-Feb-21	538786	CIL	05-Feb-21
532259	APARINDS	04-Feb-21	531067	CONTILI	05-Feb-21
530187	ATHARVENT	04-Feb-21	542729	DCMNVL	05-Feb-21
512573	AVANTI	04-Feb-21	514030	DEEPAKSP	05-Feb-21
532380	BABA	04-Feb-21	500120	DIAMINESQ	05-Feb-21
531340	BERVINL	04-Feb-21	532707	DYNPRO	05-Feb-21
502216	BOMBOPOT	04-Feb-21	500660	GLAXO	05-Feb-21
514045	BSL	04-Feb-21	533263	GREENPOWER	05-Feb-21
500085	CHAMBLFERT	04-Feb-21	514386	GUJCOTEX	05-Feb-21
531344	CONCOR	04-Feb-21	534328	HEXATRADEX	05-Feb-21
542216	DALBHARAT	04-Feb-21	500500	HINDMOTORS	05-Feb-21
532737	EMKAY	04-Feb-21	524648	INDOAMIN	05-Feb-21
500655	GARWARPOLY	04-Feb-21	532851	INSECTICID	05-Feb-21
507815	GILLETTE	04-Feb-21	523638	IPRINGLTD	05-Feb-21
500670	GNFC	04-Feb-21	531109	ISHANCH	05-Feb-21
500182	HEROMOTOCO	04-Feb-21	501311	JAYBHCR	05-Feb-21

Result Calendar Q3FY21

BSE Code	Company Name	Result Date	BSE Code	Company Name	Result Date
524731	JENBURPH	05-Feb-21	532865	MEGH	08-Feb-21
500378	JINDALSAW	05-Feb-21	502168	NCLIND	08-Feb-21
590066	KCP	05-Feb-21	514316	RAGHUSYN	08-Feb-21
505890	KENNAMET	05-Feb-21	537840	RAUNAQEPC	08-Feb-21
532067	KILPEST	05-Feb-21	532805	REDINGTON	08-Feb-21
530443	KIRANSY-B	05-Feb-21	533168	ROSSELLIND	08-Feb-21
533293	KIRLOSENG	05-Feb-21	590072	SUNDRMBRAK	08-Feb-21
500243	KIRLOSIND	05-Feb-21	534369	TBZ	08-Feb-21
532924	KOLTEPATIL	05-Feb-21	500420	TORNTPHARM	08-Feb-21
500304	NIITLTD	05-Feb-21	511122	1STCUS	09-Feb-21
506605	POLYCHEM	05-Feb-21	500710	AKZOINDIA	09-Feb-21
532460	PONNIERODE	05-Feb-21	502015	ASIL	09-Feb-21
530117	PRIVISCL	05-Feb-21	540975	ASTERDM	09-Feb-21
524218	RESONANCE	05-Feb-21	500042	BASF	09-Feb-21
534618	SAREL	05-Feb-21	509480	BERGEPAIN	09-Feb-21
526137	SHETR	05-Feb-21	505690	BRADYM	09-Feb-21
511108	SHIVTEX	05-Feb-21	532885	CENTRALBK	09-Feb-21
503696	SHRENTI	05-Feb-21	532640	CYBERMEDIA	09-Feb-21
504398	SJCORP	05-Feb-21	505700	ELECON	09-Feb-21
500472	SKFINDIA	05-Feb-21	540153	ENDURANCE	09-Feb-21
505192	SMLISUZU	05-Feb-21	532809	FSL	09-Feb-21
542920	SUMICHEM	05-Feb-21	542011	GRSE	09-Feb-21
533393	TCIDEVELOP	05-Feb-21	509631	HEG	09-Feb-21
523301	TCPLPACK	05-Feb-21	532612	INDOCO	09-Feb-21
511096	TVOLCON	05-Feb-21	538422	JACKSON	09-Feb-21
530477	VIKRAMTH	05-Feb-21	523398	JCHAC	09-Feb-21
512345	YASTF	05-Feb-21	532998	LEHIL	09-Feb-21
504988	ZWELCAST	05-Feb-21	539957	MGL	09-Feb-21
530881	ABVL	06-Feb-21	532097	MUKANDENGG	09-Feb-21
500103	BHEL	06-Feb-21	532529	NDTV	09-Feb-21
534804	CARERATING	06-Feb-21	504093	PANAENERG	09-Feb-21
532488	DIVISLAB	06-Feb-21	512099	PUNITCO	09-Feb-21
533146	DLINKINDIA	06-Feb-21	538993	PUROHITCON	09-Feb-21
504176	HIGHENE	06-Feb-21	505800	RANEHOLDIN	09-Feb-21
524330	JAYAGROGN	06-Feb-21	500330	RAYMOND	09-Feb-21
532644	JKCEMENT	06-Feb-21	532670	RENUKA	09-Feb-21
524000	MAGMA	06-Feb-21	540212	TCIEXP	09-Feb-21
531688	PRITHVIXCH	06-Feb-21	511742	UGROCAP	09-Feb-21
515085	RESTILE	06-Feb-21	501391	WHBRADY	09-Feb-21
502450	SESHAPAPER	06-Feb-21	500002	ABB	10-Feb-21
532790	TANLA	06-Feb-21	503960	BBL	10-Feb-21
531762	UNJHAFOR	06-Feb-21	512477	BETXIND	10-Feb-21
535755	ABFRL	08-Feb-21	532719	BLKASHYAP	10-Feb-21
500012	ANDHRAPET	08-Feb-21	532992	CHLLTD	10-Feb-21
530999	BALAMINES	08-Feb-21	531278	ELIXIR	10-Feb-21
523319	BALMLAWRIE	08-Feb-21	500133	ESABINDIA	10-Feb-21
506405	DHARAMSI	08-Feb-21	526614	EXPOGAS	10-Feb-21
523708	EIMCOELECO	08-Feb-21	500150	FOSECOIND	10-Feb-21
533208	ENAMIPAP	08-Feb-21	509162	INDAG	10-Feb-21
532425	GENUSPRIME	08-Feb-21	532717	INDOTECH	10-Feb-21
533104	GLOBUSSPR	08-Feb-21	507779	KANPRPLA	10-Feb-21
511441	GUJCRED	08-Feb-21	535730	KHOOSURAT	10-Feb-21
509895	HINDMILL	08-Feb-21	502958	LAKSHMIMIL	10-Feb-21
501151	KARTKIN	08-Feb-21	500264	MAFATIND	10-Feb-21
590068	KHAITANLTD	08-Feb-21	506919	MAKERSL	10-Feb-21
500458	KORE	08-Feb-21	509196	MMRUBBR-B	10-Feb-21
531288	LEADFIN	08-Feb-21	523160	MORGANITE	10-Feb-21

Result Calendar Q3FY21

BSE Code	Company Name	Result Date	BSE Code	Company Name	Result Date
530557	NCLRESE	10-Feb-21	530171	DAULAT	12-Feb-21
532864	NELCAST	10-Feb-21	506401	DEEPAKNI	12-Feb-21
500307	NIRLON	10-Feb-21	509525	EMPIND	12-Feb-21
532827	PAGEIND	10-Feb-21	530909	ERPSOFT	12-Feb-21
500126	PGHL	10-Feb-21	500650	EXCELINDUS	12-Feb-21
542123	PHOSPHATE	10-Feb-21	523113	FUTURSEC	12-Feb-21
522034	SHANTIGEAR	10-Feb-21	511676	GICHSGFIN	12-Feb-21
535602	SHARDA	10-Feb-21	506480	GOCLCORP	12-Feb-21
539217	SRESTHA	10-Feb-21	531608	GORANIN	12-Feb-21
517201	SWITCHTE	10-Feb-21	531737	GREENCREST	12-Feb-21
511559	TIMESGTY	10-Feb-21	517271	HBLPOWER	12-Feb-21
500114	TITAN	10-Feb-21	500202	INDLEASE	12-Feb-21
531279	TRISHAKT	10-Feb-21	511092	JMDVL	12-Feb-21
517506	TTKPRESTIG	10-Feb-21	504840	KAIRA	12-Feb-21
514142	TTL	10-Feb-21	519421	KSE	12-Feb-21
530363	UGARSUGAR	10-Feb-21	523248	MACPLASQ	12-Feb-21
509038	VOLLF	10-Feb-21	512337	MAHSHRE	12-Feb-21
500410	ACC	11-Feb-21	517334	MOTHERSUMI	12-Feb-21
507525	AMRITCORP	11-Feb-21	501343	MOTOGENFIN	12-Feb-21
524824	BALPHARMA	11-Feb-21	532777	NAUKRI	12-Feb-21
505688	BHARATGEAR	11-Feb-21	530897	NGIND	12-Feb-21
500530	BOSCHLTD	11-Feb-21	531272	NIKKIGL	12-Feb-21
543232	CAMS	11-Feb-21	531280	PANKAJPO	12-Feb-21
500147	COCKERILL	11-Feb-21	513228	PENIND	12-Feb-21
532173	CYBERTECH	11-Feb-21	505502	PSITINFRA	12-Feb-21
530779	DYNAMICP	11-Feb-21	539006	PTCIL	12-Feb-21
533161	EMMBI	11-Feb-21	500346	PUNJCOMMU	12-Feb-21
530263	GLOBALCA	11-Feb-21	532826	RAJTV	12-Feb-21
532160	GUJSTATFIN	11-Feb-21	530917	RRSECUR	12-Feb-21
500467	HARRMALAYA	11-Feb-21	512634	SAVERA	12-Feb-21
512237	JAICORPLTD	11-Feb-21	503804	SHRIDINE	12-Feb-21
524174	KESARPE	11-Feb-21	521161	SLSTLQ	12-Feb-21
533007	LGBFORGE	11-Feb-21	508905	SMIFS	12-Feb-21
514036	LOYALTEX	11-Feb-21	526901	SONALAD	12-Feb-21
517344	MINDTECK	11-Feb-21	521178	SRMCL	12-Feb-21
500279	MIRCELECTR	11-Feb-21	530759	STERTOOLS	12-Feb-21
542597	MSTC	11-Feb-21	590005	TIDEWATER	12-Feb-21
504058	NIPPOBATRY	11-Feb-21	530783	TRANSASIA	12-Feb-21
532722	NITCO	11-Feb-21	531411	TUNITEX	12-Feb-21
500672	NOVARTIND	11-Feb-21	532515	TVTODAY	12-Feb-21
523874	PRECISION	11-Feb-21	521226	UNIROYAL	12-Feb-21
535514	PRIMECAPM	11-Feb-21	531831	UNISH	12-Feb-21
530271	RICHUNV	11-Feb-21	524038	VENLONENT	12-Feb-21
516016	SHREYANIND	11-Feb-21	514378	YARNSYN	12-Feb-21
526335	SHREYASI	11-Feb-21	530063	YASHRAJC	12-Feb-21
522152	SOLIMAC	11-Feb-21	522209	YOGISUNG	12-Feb-21
532804	TIIL	11-Feb-21	520133	ALANGMR-B	13-Feb-21
531091	UNITDCR	11-Feb-21	500008	AMARAJABAT	13-Feb-21
539123	VBIND	11-Feb-21	519500	BKV	13-Feb-21
522267	VJLAXMIE	11-Feb-21	531420	BMBMUMG	13-Feb-21
530431	ADORFO	12-Feb-21	532324	CINEVISTA	13-Feb-21
526851	AREXMIS	12-Feb-21	526821	DAICHI	13-Feb-21
523850	AXTEL	12-Feb-21	542679	DEL	13-Feb-21
531977	CHLOGIST	12-Feb-21	532659	IDFC	13-Feb-21
506390	CLNINDIA	12-Feb-21	540774	IFGLEXPOR	13-Feb-21
520131	COARO	12-Feb-21	506945	IGLFXPL-B	13-Feb-21
540361	DANUBE	12-Feb-21	541161	KARDA	13-Feb-21

Economic Calendar					
Country	Monday 08th Feb 2021	Tuesday 09th Feb 2021	Wednesday 10th Feb 2021	Thursday 11th Feb 2021	Friday 12th Feb 2021
US		Jolts Job opening	API Weekly Crude Oil Stock, Crude Oil Inventories, US Federal Budget, CPI	Initial Jobless Claims, Fed Monetary Policy Report	U.S. Baker Hughes Total Rig Count
UK/EUROPE		Retail sales manitor			GDP, Trade Balance
INDIA					CPI, FX Reserves, USD

Narnolia Financial Advisors Ltd. is a SEBI registered Research Analyst having SEBI Registration No. INH300006500. The Company/Analyst (s) does/do not have any holding in the stocks discussed but these stocks may have been recommended to clients in the past. Clients of Narnolia Financial Advisors Ltd. may be holding aforesaid stocks.

The stocks recommended are based on our analysis which is based on information obtained from public sources and sources believed to be reliable, but no independent verification has been made nor is its accuracy or completeness guaranteed.

Disclosures: Narnolia Financial Advisors Ltd. (NFAL) (Formerly Microsec Capital Ltd.) is a SEBI Registered Research Analyst having registration no. INH300006500. NFAL is engaged in the business of providing Stock Broking, Depository Participant, Merchant Banking, Portfolio Management & distribution of various financial products. Details of associate entities of NFAL is available on the website at www.narnolia.com

No penalties have been levied on NFAL by any Regulatory/Statutory authority. NFAL, its associates, Research Analyst or their relative may have financial interest in the subject company. NFAL and/or its associates and/or Research Analyst may have beneficial ownership of 1% or more securities in the subject company at the end of the month immediately preceding the date of publication of the Research Report. NFAL and its associate company(ies), their directors and Research Analyst and their relatives may; (a) from time to time, have a long or short position in, act as principal in, and buy or sell the securities or derivatives thereof of companies mentioned herein. (b) be engaged in any other transaction involving such securities and earn brokerage or other compensation or act as a market maker in the financial instruments of the company(ies) discussed herein or act as an advisor or lender/borrower to such company(ies) or may have any other potential conflict of interests with respect to any recommendation and other related information and opinions.; however the same shall have no bearing whatsoever on the specific recommendations made by the analyst(s), as the recommendations made by the analyst(s) are completely independent of the views of the associates of NFAL even though there might exist an inherent conflict of interest in some of the stocks mentioned in the research report. Research Analyst may have served as director/officer, etc. in the subject company in the last 12 month period. NFAL and/or its associates may have received compensation from the subject company in the past 12 months. In the last 12 months period ending on the last day of the month immediately preceding the date of publication of this research report, NFAL or any of its associates may have: a) managed or co-managed public offering of securities from subject company of this research report, b) received compensation for investment banking or merchant banking or brokerage services from subject company of this research report, c) received compensation for products or services other than investment banking or merchant banking or brokerage services from the subject company of this research report. d) Subject Company may have been a client of NFAL or its associates during 12 months preceding the date of distribution of the research report. NFAL and its associates have not received any compensation or other benefits from the Subject Company or third party in connection with the research report. NFAL and / or its affiliates may do and seek to do business including Investment Banking with companies covered in the research reports. As a result, the recipients of this report should be aware that NFAL may have a potential conflict of interest that may affect the objectivity of this report. Compensation of Research Analysts is not based on any specific Merchant Banking, Investment Banking or Brokerage service transactions. Research Analyst's views on Subject Company may vary based on Fundamental research and Technical Research. Proprietary trading desk of NFAL or its associates maintains arm's length distance with Research Team as all the activities are segregated from NFAL research activity and therefore it can have an independent view with regards to subject company for which Research Team have expressed their views.

Analyst Certification The views expressed in this research report accurately reflect the personal views of the analyst(s) about the subject securities or issues, and no part of the compensation of the research analyst(s) was, is, or will be directly or indirectly related to the specific recommendations and views expressed by research analyst(s) in this report.

Disclosure of Interest Statement-

Analyst's ownership of the stocks mentioned in the Report	NIL
---	-----

A graph of daily closing prices of securities is available at www.nseindia.com, www.bseindia.com.

Correspondence Office Address: Arch Waterfront, 5th Floor, Block GP, Saltlake, Sector 5, Kolkata 700 091; Tel No.: 033-40541700; www.narnolia.com.

Registered Office Address: Marble Arch, Office 201, 2nd Floor, 236B, AJC Bose Road, Kolkata 700 020; Tel No.: 033-4050 1500; www.narnolia.com

Compliance Officer: Manish Kr Agarwal, Email Id: mkagarwal@narnolia.com, Contact No.:033-40541700.

Registration details of Company: Narnolia Financial Advisors Ltd. (NFAL): SEBI Stock Broker Registration: INZ000166737 (NSE/BSE/MSEI); NSDL/CDSL: IN-DP-380-2018; Research Analyst: INH300006500, Merchant Banking: (Registration No.: INM000010791), PMS: (Registration No.: INP000002304), AMFI Registered Mutual Fund distributor: ARN 3087

Registration Details of Group entities: G. Raj & Company Consultants Ltd (G RAJ)-BSE Broker INZ260010731; NSDL DP: IN-DP-NSDL-371-2014 || Narnolia Commerce Limited (Formerly Microsec Commerce Ltd.)-MCX/NCDEX Commodities Broker: INZ000051636 || NarnoliaVelox Advisory Ltd.- SEBI Registered PMS: INP000005109 || Eastwind Capital Advisors Pvt Ltd. (EASTWIND)-SEBI Registered Investment Adviser: INA300005439 || Narnolia Insurance Brokers Limited (Formerly Microsec Insurance Brokers Ltd.)-IRDA Licensed Direct Insurance Broker (Life & Non-Life) Certificate No. 134, License No. DB046/02 || Narnolia Securities Ltd. (NSL)-AMFI Registered Mutual Fund distributor: ARN 20558, PFRDA NPS POP: 27092018 || Narnolia Capital Advisors Pvt. Ltd. - RBI Registered NBFC:B.05.02568.

Disclaimer:

This report has been prepared by Narnolia Financial Advisors Ltd. (NFAL) and is meant for sole use by the recipient and not for public circulation. The report and information contained herein is strictly confidential and may not be altered in any way, transmitted to, copied or distributed, in part or in whole, to any other person or to the media or reproduced in any form, without prior written consent of NFAL. The report is based on the facts, figures and information that are considered true, correct, reliable and accurate. The intent of this report is not recommendatory in nature. The information is obtained from publicly available media or other sources believed to be reliable. Such information has not been independently verified and no guaranty, representation of warranty, express or implied, is made as to its accuracy, completeness or correctness. All such information and opinions are subject to change without notice. The report is prepared solely for informational purpose and does not constitute an offer document or solicitation of offer to buy or sell or subscribe for securities or other financial instruments for the clients. Nothing in this report constitutes investment, legal, accounting and tax advice or a representation that any investment or strategy is suitable or appropriate to your specific circumstances. The securities discussed and opinions expressed in this report may not be suitable for all investors, who must make their own investment decisions, based on their own investment objectives, financial positions and needs of specific recipient. Certain transactions - including those involving futures, options, another derivative products as well as non-investment grade securities - involve substantial risk and are not suitable for all investors. Each recipient of this document should make such investigations as it deems necessary to arrive at an independent evaluation of an investment in the securities of companies referred to in this document (including the merits and risks involved), and should consult his/her/its own advisors to determine the merits and risks of such an investment. Though disseminated to all the customers simultaneously, not all customers may receive this report at the same time. NFAL will not treat recipients as customers by virtue of their receiving this report. Neither the Company, nor its directors, employees, agents or representatives shall be liable for any damages whether direct or indirect, incidental, special or consequential including lost revenue or lost profits or lost opportunities that may arise from or in connection with the use of the information/report. The person accessing this information specifically agrees to exempt NFAL or any of its affiliates or employees from, and all responsibility/liability arising from such misuse and agrees not to hold NFAL or any of its affiliates or employees responsible for any such misuse and further agrees to hold NFAL or any of its affiliates or employees free and harmless from all losses, costs, damages, expenses that may be suffered by the person accessing this information due to any errors and delays.

This report is not directed or intended for distribution to or use by any person or entity resident in a state, country or any jurisdiction, where such distribution, publication, availability or use would be contrary to law, regulation or which would subject NFAL & its group companies to registration or licensing requirements within such jurisdictions.