

## Trading Calls

**SAIL** Long/Buy 6th June 2017

SAIL is consolidating from last few couple of days in the form of A-B-C. Day before yesterday it has confirmed the low point of B, So we advise our client to Buy near 57.80 for the first price target of 59.50 and second price target of 60.50 (which is expected tgt of C) with 56.20 as SL.

**NAVINFLUOR** Long/Buy 5th June 2017

Navin Fluorine has consolidated at 100 DMA (near Rs 2830) and thereafter gave a good pullback rally Friday with decent volumes. Some delivery based buying was also witnessed at that level.

Therefore we advise traders to initiate long position in the stock near Rs 3049.7 with a stop loss of Rs 2824. The upside targets are Rs 3214 and Rs 3447.

**ACC** Long/Buy 25th May 2017

In respect to previous active fall this fall was sharp which was expected. One positive aspect is that volume is low in this sharp fall compared to previous fall. The stock is technically sound. Hence we advise our client to go long near Rs 1563 for the first price target of 1663 and second price target of 1700 with 1563 as SL. Stockstastic is also trying to move up from over sold zone.

Acc Tgt achieved  
and 50% profit  
Book

**DABUR** Long/Buy 3th April 2017

Dabur India is in continuous uptrend since January 2017. The stock has given a bullish breakout above 200 DMA with decent volumes. So some fresh buying is likely to emerge in the stock at the current level.

**MERCK** Long/Buy 22th Mar 2017

After consolidating near 50 DMA since last one month, MERCK Ltd. has given a sharp pullback rally yesterday. The stock has also given a channel breakout above Rs 1020 with decent volumes.

Therefore we advise traders to initiate long position in the stock near Rs 1025 with a stop loss of Rs 928. The upside targets are Rs 1123 and Rs 1248.

Market	Value	% Change
SGX Nifty	9678.00	0.03%

### Nifty Key Levels


Institutional Turnover			
FI	Buy(Cr.)	Sale(Cr.)	Net(Cr.)
08-Jun-17	5835	5744	91
Jun-17	28114	27989	125
DI	Buy(Cr.)	Sale(Cr.)	Net(Cr.)
08-Jun-17	3642	2903	739
Jun-17	15097	14145	952

	Sectoral Performance (%)			
	1 Day	1 Week	1Month	1 Year
Auto Components	0.0	1.5	3.8	43.8
Automobiles	0.0	0.5	7.9	26.0
Chemicals	0.1	0.5	0.4	31.3
Construction Materials	0.3	3.1	(0.9)	36.1
Construction & Engg	0.2	0.1	5.2	32.5
Div. Financial Services	0.9	2.0	12.2	58.7
Electrical Equipment	(0.0)	(0.1)	(3.1)	22.4
Energy	0.5	(0.9)	(1.4)	45.2
Financials	0.2	1.8	1.0	41.9
Health Care	(0.0)	5.0	(5.0)	(5.8)
Household Durables	0.2	1.5	(4.4)	26.03
Household Pers. Products	1.6	1.8	3.0	12.9
Information Technology	0.78	1.2	7.5	(4.3)
Metals/Mining/Minerals	(0.8)	(2.2)	(1.3)	26.2
Telecom	0.7	0.8	5.0	(0.6)
Utilities	(0.1)	2.4	(0.6)	22.6

## Participant wise Open Interest In Equities Derivative (no. of contracts)

	Long Position			
	DII	FII	Pro	Other
Future Index	18067	245939	18548	111199
Future Stock	33476	428370	139055	928100
Option Index Call	142834	249090	199052	319275
Option Index Put	19547	324984	180330	573118
Option Stock Call	459	29979	43984	217398
Option Stock Put	0	24596	41877	96050

	Short Position			
	DII	FII	Pro	Other
Future Index	22007	43804	61858	266084
Future Stock	524310	678051	72076	254564
Option Index Call	0	180877	178100	551273
Option Index Put	0	89010	293491	715478
Option Stock Call	92	25084	91985	174659
Option Stock Put	0	16424	45782	100317

## High ES & High PS Stock Maintaining Strength

BSE Code	NSE CODE	1 Month Return %
512573	AVANTI	56.2
524742	CAPPL	44.1
532856	TIMETECHNO	36.8
500495	ESCORTS	24.9
532636	INDIAINFO	20.9
511431	VAKRANSOFT	18.0
515030	ASAHIINDIA	17.7
532714	KEC	17.7
532892	MOTILALOF	17.1
500182	HEROMOTOCO	15.0

## High ES & Low PS Stock Showing Strength

BSE Code	NSE CODE	1 Month Return %
532432	MCDOWELL-N	25.4
532777	NAUKRI	23.2
533088	MHRIL	18.4
530367	NRBBEARING	18.2
523398	HITACHIOM	17.5
532498	SHRIRAMCIT	15.8
500477	ASHOKLEY	14.4
500575	VOLTAS	13.8
532156	VAIBHAVGEM	13.7
532548	CENTURYPLY	13.0

## Low ES & Low PS Stock Maintaining Weakness

BSE Code	NSE CODE	1 Month Return %
511389	VIDEOIND	(70.99)
532712	RCOM	(42.22)
532121	DENABANK	(23.65)
532505	UCOBANK	(20.63)
532480	ALBK	(19.85)
532418	ANDHRABANK	(18.24)
532944	ONMOBILE	(17.29)
532525	MAHABANK	(16.41)
532939	RPOWER	(15.67)
532370	RAMCOSYS	(15.65)

## Low ES & High PS Stock Showing Weakness

BSE Code	NSE CODE	1 Month Return %
500116	IDBI	(27.53)
500106	IFCI	(24.81)
523204	ABAN	(16.57)
519600	CCL	(15.91)
532779	TORNTPOWER	(15.69)
533171	UNITEDBNK	(15.27)
532955	RECLTD	(14.85)
533096	ADANIPOWER	(13.94)
532461	PNB	(12.76)
532477	UNIONBANK	(12.12)

\* ES- Earning Score is average of EM (Earning Momentum defined as relative performance in terms of operating profit growth) and EQ (Earning Quality defined as relative balance sheet strength in terms of debt and working capital)

\* PS- Price Score is of a company is relative price performance in multiple time-frame

# Analysis shown here is only for companies with market cap more than Rs 1,000 Cr.

During the week the Nifty continued to remain in the channel projected since last few weeks. It is now seven weeks that Nifty has been within this channel. With passage of time the range of this channel is increasing and the upper and lower levels of the channel are becoming more and more important. The range of the channel for the next week is 9775 to 9525 and we can safely assume that these levels will hold. So any move towards 9525 and same being held is an opportunity to buy. A move towards 9775 and a weakness at that level can be sold into.

On the daily charts the real bodies of candlesticks have become smaller indicating loss of momentum on the upside. On Friday, there was a gap up but with less than average volume. The bottom of the gap is 9634.50. This level should be carefully watched. Daily close below this level within a few days will indicate that this was a exhaustion gap and correction is in the offing.

**CANDLESTICK CHART**



**RESISTANCE AND SUPPORT LEVELS BASED ON WEEKLY AND DAILY ANALYSIS**

RESISTANCE/SUPPORT	NIFTY LEVEL	JUSTIFICATION
Resistance 1	9673	ALL TIME HIGH
Resistance 2	9775	TOP OF THE CHANNEL
Support 1	9634	BOTTOM OF GAP UP ½ JUNE 2017
Support 2	9547	PREVIOUS WEEK LOW
Support 3	9525	BOTTOM OF CHANNEL

9th June 2017

**Rating : Long / BUY**

Initiation Date

**6-Jun-17**

BSE Code	500113	Buy Price	57.8
NSE Symbol	SAIL	Stop Loss	56.2
52wk Range H/L	68.55/40.75	Target Price1	59.5
Mkt Capital (Rs Cr)	23913	Target Price2	60.5
Av.Cash Volume	5,978	Upside in Tgt1	2.94
Open Interest	-	Upside in Tgt2	4.67



SAIL is consolidating from last few couple of days in the form of A-B-C. Day before yesterday it has confirmed the low point of B, So we advise our client to Buy near 57.80 for the first price target of 59.50 and second price target of 60.50 (which is expected tgt of C) with 56.20 as SL.

9th June 2017

**Narnolia Securities Ltd** | Market Research

**Rating : Long / BUY**

**Initiation Date**

**5-Jun-17**

BSE Code	532504
NSE Symbol	NAVINFLUOR
52wk Range H/L	1920.55/3250
Mkt Capital (Rs Cr)	2985
Av.Cash Volume(,000)	34
Open Interest	NA

Buy Price	3049.7
Stop Loss	2824
Target Price1	3214
Target Price2	3467
Upside in Tgt1	5%
Upside in Tgt2	14%

**Technical Chart**



Navin Fluorine has consolidated at 100 DMA (near Rs 2830) and thereafter gave a good pullback rally Friday with decent volumes. Some delivery based buying was also witnessed at that level.

Therefore we advise traders to initiate long position in the stock near Rs 3049.7 with a stop loss of Rs 2824. The upside targets are Rs 3214 and Rs 3447.

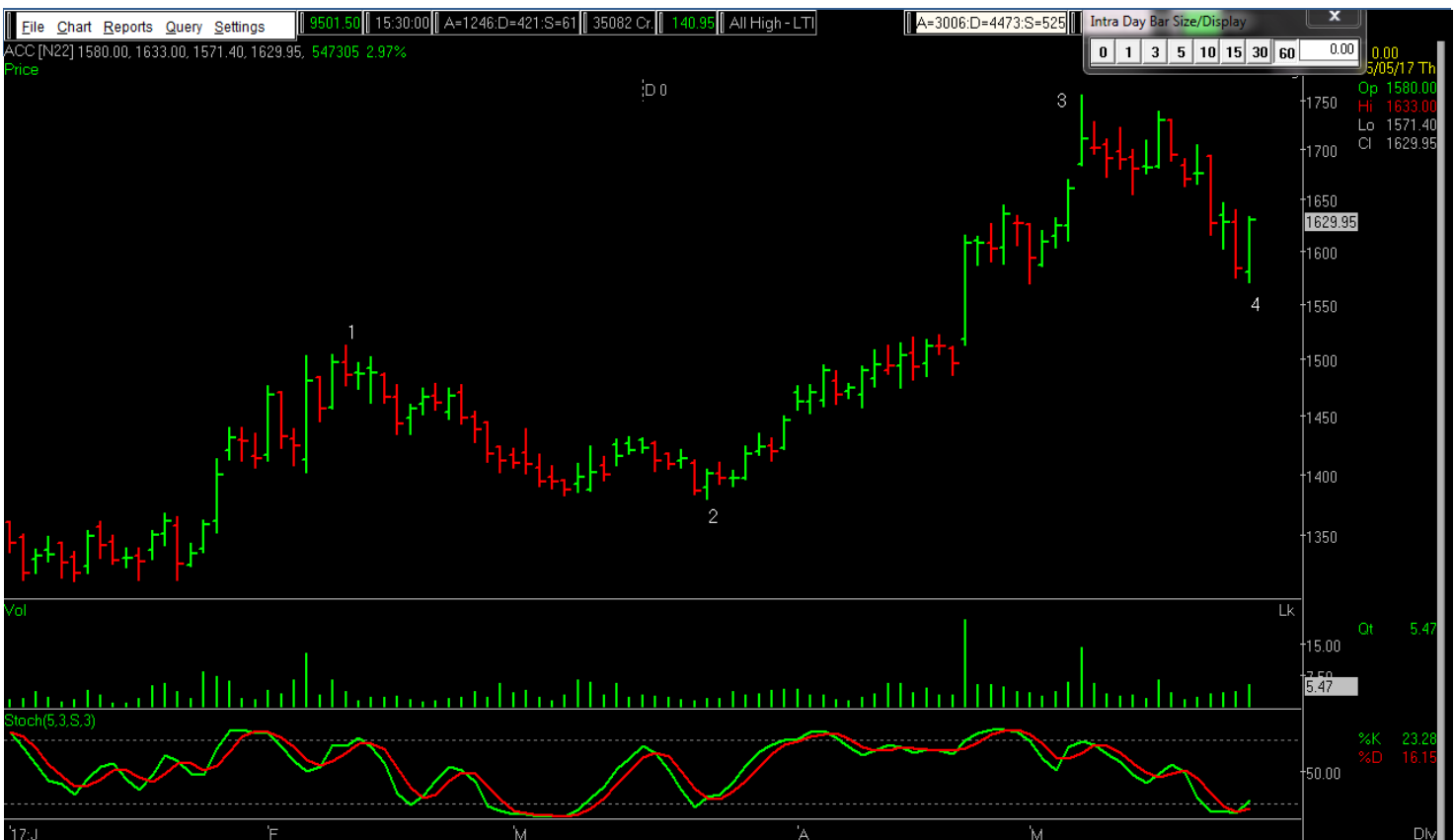
RSI, MACD and Stochastic all are in oversold zone, suggesting some fresh buying is likely to emerge at the current level.

**Rating : Long / BUY**

**Initiation Date 25-May-17**

BSE Code	500410
NSE Symbol	ACC
52wk Range H/L	1753.85/1257
Mkt Capital (Rs Cr)	30322
Av.Cash Volume	15,161
Open Interest	-

Buy Price	1613
Stop Loss	1563
Target Price1	1663
Target Price2	1700
Upside in Tgt1	3.10
Upside in Tgt2	5.39



In respect to preceding corrective fall this fall was sharp which was expected. One positive thing we can observe that volume is low in this sharp fall compared to extended impulse which is technically sound. Hence we advise our client to go long near 1613 for the first price target of 1663 and second price target of 1700 with 1563 as SL. Stochastic is also trying to move up from over sold zone.

**Rating : Long / BUY**

**Initiation Date 3-Apr-17**

BSE Code	500096
NSE Symbol	DABUR
52wk Range H/L	244.95/320
Mkt Capital (Rs Cr)	50556
Av.Cash Volume(,000)	598
Open Interest	11453182

Buy Price	286.9
Stop Loss	270
Target Price1	304
Target Price2	327
Upside in Tgt1	6%
Upside in Tgt2	14%

### Technical Chart



Dabur India is in continuous uptrend since January 2017. The stock has given a bullish breakout above 200 DMA with decent volumes. So some fresh buying is likely to emerge in the stock at the current level.

2

**Rating : Long / BUY**

**Initiation Date**

**22-Mar-17**

BSE Code	500126
NSE Symbol	MERCK
52wk Range H/L	625.10/1157
Mkt Capital (Rs Cr)	1701
Av.Cash Volume(,000)	38.4
Open Interest	NA

Buy Price	1025.7
Stop Loss	928
Target Price1	1123
Target Price2	1248
Upside in Tgt1	9%
Upside in Tgt2	22%

### Technical Chart



After consolidating near 50 DMA since last one month, MERCK Ltd. has given a sharp pullback rally yesterday. The stock has also given a channel breakout above Rs 1020 with decent volumes.

Therefore we advise traders to initiate long position in the stock near Rs 1025 with a stop loss of Rs 928. The upside targets are Rs 1123 and Rs 1248.

The indicators (like RSI and MACD) are in oversold zone suggesting some fresh upside in the extreme short term.



# Narnolia

Advance Strategy - Simple Solutions

## Narnolia Securities Ltd

201 | 2nd Floor | Marble Arch Building | 236B-AJC Bose  
Road | Kolkata-700 020 , Ph : 033-40501500

email: [narnolia@narnolia.com](mailto:narnolia@narnolia.com),  
website : [www.narnolia.com](http://www.narnolia.com)

**Risk Disclosure & Disclaimer:** This report/message is for the personal information of the authorized recipient and does not construe to be any investment, legal or taxation advice to you. Narnolia Securities Ltd. (Hereinafter referred as NSL) is not soliciting any action based upon it. This report/message is not for public distribution and has been furnished to you solely for your information and should not be reproduced or redistributed to any other person in any form. The report/message is based upon publicly available information, findings of our research wing "East wind" & information that we consider reliable, but we do not represent that it is accurate or complete and we do not provide any express or implied warranty of any kind, and also these are subject to change without notice. The recipients of this report should rely on their own investigations, should use their own judgment for taking any investment decisions keeping in mind that past performance is not necessarily a guide to future performance & that the the value of any investment or income are subject to market and other risks. Further it will be safe to assume that NSL and /or its Group or associate Companies, their Directors, affiliates and/or employees may have interests/ positions, financial or otherwise, individually or otherwise in the recommended/mentioned securities/mutual funds/ model funds and other investment products which may be added or disposed including & other mentioned in this report/message.